

TEXAS DEPARTMENT OF
TRANSPORTATION
DALLAS DISTRICT
WILLIAM HALE, P.E.
DISTRICT ENGINEER

DESIGN SCHEMATIC

FM 720

CSJ: 1567-01-025
URBAN COLLECTOR
FROM: EL DORADO PKWY
TO: US 380
DESIGN SPEED = 40 MI/HR
PROJECT LENGTH: 4.696 MI

SEPTEMBER 2007
DENTON COUNTY

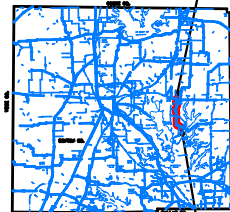
SCALE: HORIZONTAL 1"=200'
VERTICAL 1"=10'
ROLL 1 OF 3

NOT A BIDDING DOCUMENT
ENGINEER MOHAMED K. BUR
P.E. NUMBER 97100
DATE 09/12/2007
SIGNATURE

© 2007 by Texas Department of Transportation, all rights reserved

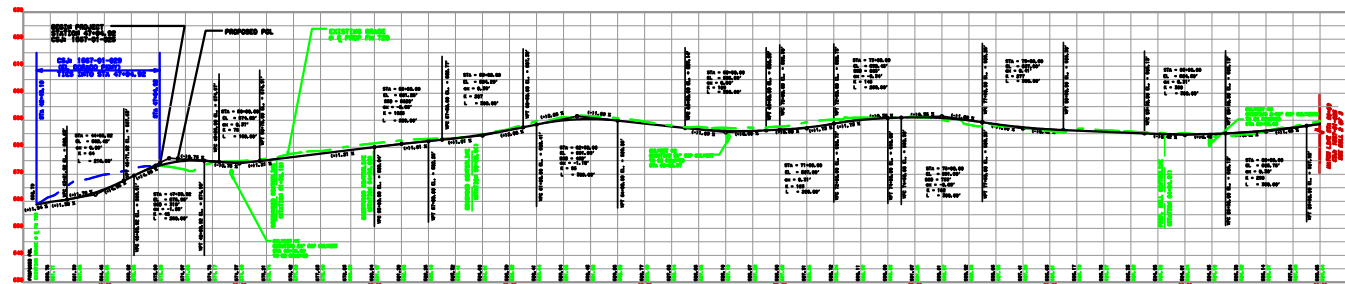
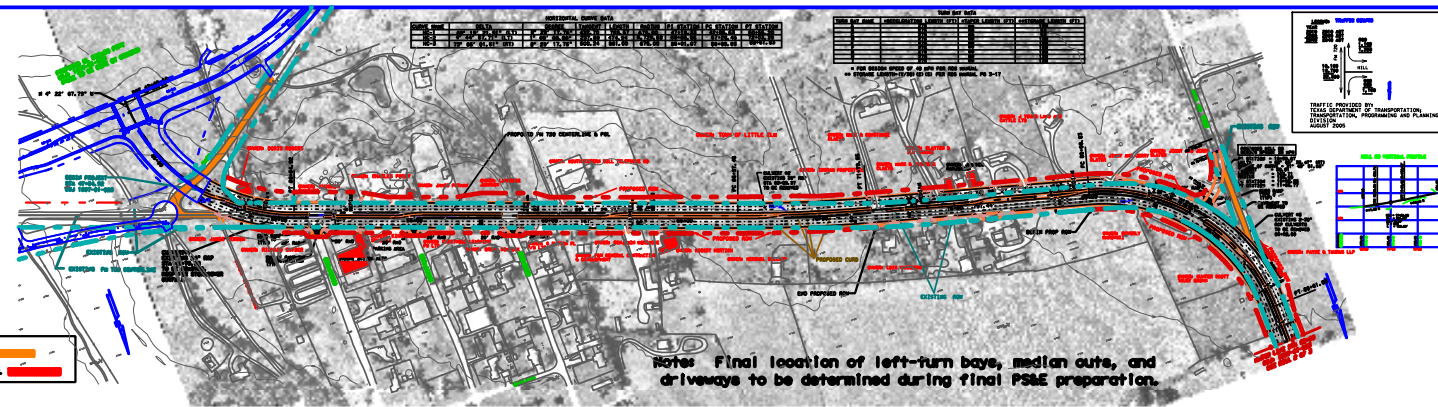
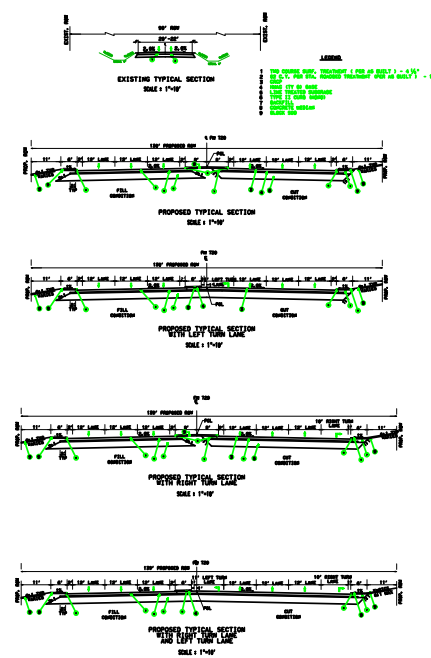
LOCATION MAP

END PROJECT
FM 720: US 380
STA 294+47.40
CSJ: 1567-01-025



BEGIN PROJECT
FM 720: EL DORADO PKWY
STA 46+54.00
CSJ: 1567-01-025

Note: Preliminary Design Schematic
Subject to Change Not Intended for
Construction, Bidding or Permit Purpose



TEXAS DEPARTMENT OF
TRANSPORTATION
DALLAS DISTRICT
WILLIAM HALE, P.E.
DISTRICT ENGINEER

DESIGN SCHEMATIC

FM 720

CSJ: 1567-01-025
URBAN COLLECTOR
FROM: EL DORADO PKWY
TO: US 380
DESIGN SPEED = 40 MI/HR
PROJECT LENGTH: 4.696 MI

SEPTEMBER 2007
DENTON COUNTY
SCALE: HORIZONTAL 1"=200'
VERTICAL 1"=10'

ROLL 1 OF 3

NOT A BIDDING DOCUMENT
ENGINEER MOHAMED K. BUR
P.E. NUMBER 97100
DATE 09/12/2007
SIGNATURE

© 2007 by Texas Department of Transportation, all rights reserved