

TEXAS DEPARTMENT OF
TRANSPORTATION
DALLAS DISTRICT
WILLIAM HALE, P.E.
DISTRICT ENGINEER

DESIGN SCHEMATIC

FM 720

CSJ: 1567-01-025
URBAN COLLECTOR
FROM: EL DORADO PKWY
TO: US 380

DESIGN SPEED = 40 MI/HR
PROJECT LENGTH: 4.696 MI

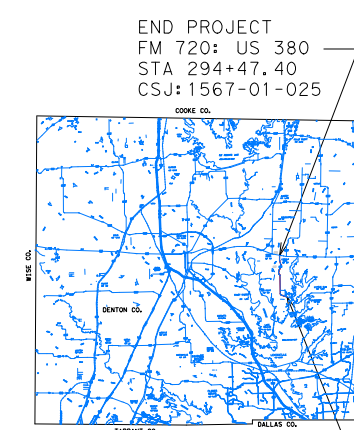
SEPTEMBER 2007
DENTON COUNTY

SCALE: HORIZONTAL 1"=100'
VERTICAL 1"=10'
ROLL 2 OF 3

NOT A BIDDING DOCUMENT	ENGINEER P.E. NUMBER DATE	MOHAMED K. BUR 36195 09/12/2007
SIGNATURE		

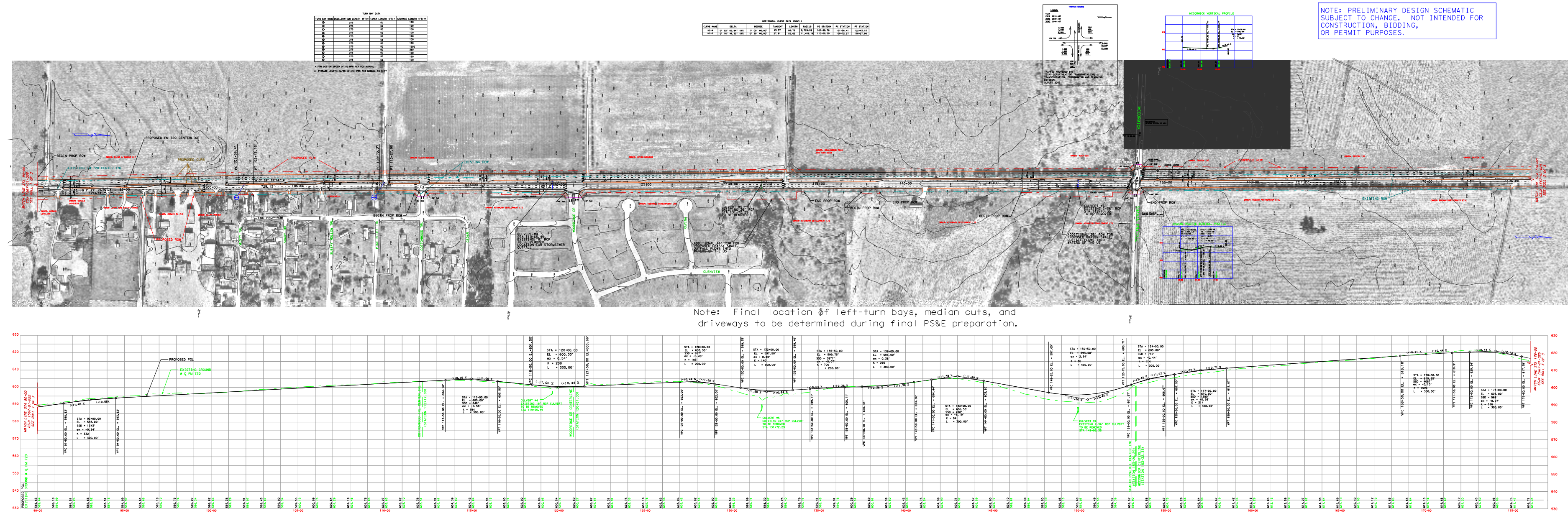
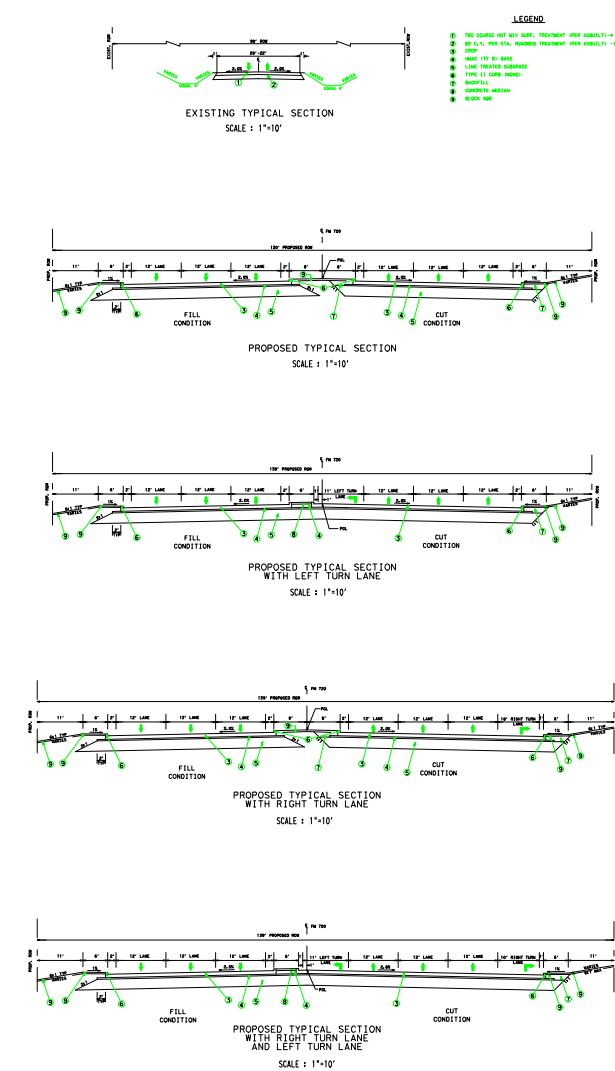
© 2007 by Texas Department of Transportation, all rights reserved

LOCATION MAP



END PROJECT
FM 720: US 380
STA 294+47.40
CSJ: 1567-01-025

BEGIN PROJECT
FM 720: EL DORADO PKWY
STA 46+54.00
CSJ: 1567-01-025



Note: Final location of left-turn bays, median cuts, and driveways to be determined during final PS&E preparation.

NOTE: PRELIMINARY DESIGN SCHEMATIC
SUBJECT TO CHANGE. NOT INTENDED FOR
CONSTRUCTION, BIDDING,
OR PERMIT PURPOSES.

TEXAS DEPARTMENT OF
TRANSPORTATION
DALLAS DISTRICT
WILLIAM HALE, P.E.
DISTRICT ENGINEER
DESIGN SCHEMATIC

FM 720

CSJ: 1567-01-025
URBAN COLLECTOR
FROM: EL DORADO PKWY
TO: US 380

DESIGN SPEED = 40 MI/HR
PROJECT LENGTH: 4.696 MI

SEPTEMBER 2007
DENTON COUNTY

SCALE: HORIZONTAL 1"=100'
VERTICAL 1"=10'
ROLL 2 OF 3

NOT A BIDDING DOCUMENT	ENGINEER P.E. NUMBER DATE	MOHAMED K. BUR 36195 09/12/2007
SIGNATURE		

© 2007 by Texas Department of Transportation, all rights reserved