

TEXAS DEPARTMENT OF
TRANSPORTATION
DALLAS DISTRICT
WILLIAM HALE, P.E.
DISTRICT ENGINEER

DESIGN SCHEMATIC

FM 720

CSJ: 1567-01-025

URBAN COLLECTOR

FROM: EL DORADO PKWY

TO: US 380

DESIGN SPEED = 40 MI/HR

PROJECT LENGTH: 4.696 MI

SEPTEMBER 2007

DENTON COUNTY

SCALE: HORIZONTAL 1"=100'

VERTICAL 1"=10'

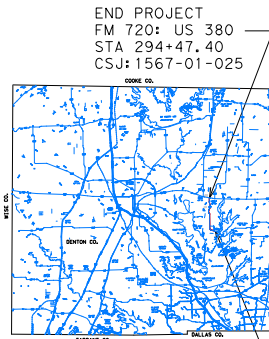
ROLL 3 OF 3

NOT A
BIDDING
DOCUMENT

ENGINEER: MOHAMMED K. BUR
NAME: MOHAMMED K. BUR
DATE: 09/12/2007
SIGNATURE

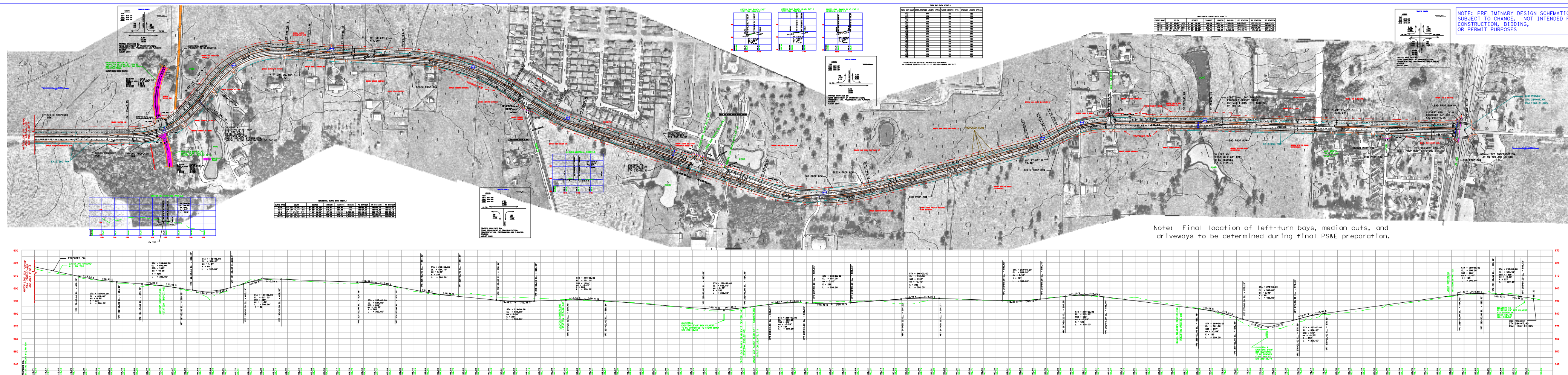
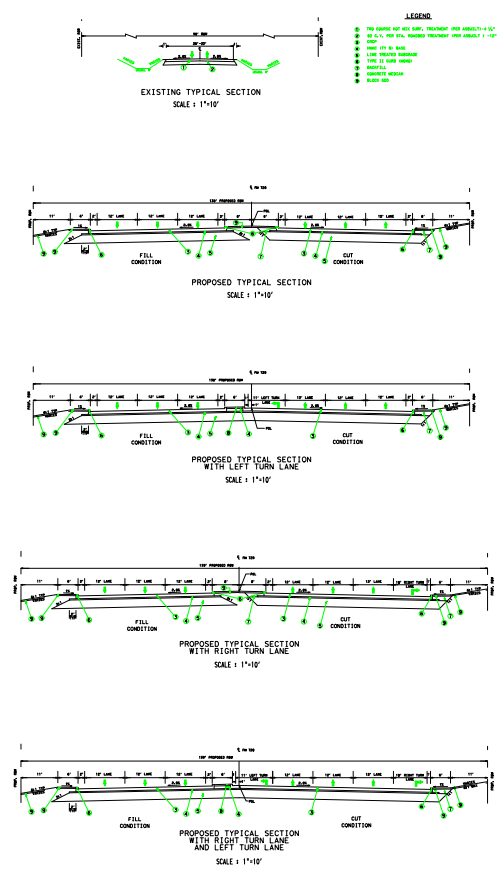
© 2007 by Texas Department of Transportation. All rights reserved.

LOCATION MAP



END PROJECT
FM 720 US 190
STA 294+41.40
CSJ: 1567-01-025

BEGIN PROJECT
FM 720 EL DORADO PKWY
STA 48+54.00
CSJ: 1567-01-025



NOTES: PRELIMINARY DESIGN SCHEMATIC
SUBJECT TO CHANGE. NOT INTENDED FOR
CONSTRUCTION, BIDDING,
OR PERMIT PURPOSES.

TEXAS DEPARTMENT OF
TRANSPORTATION
DALLAS DISTRICT
WILLIAM HALE, P.E.
DISTRICT ENGINEER

DESIGN SCHEMATIC

FM 720

CSJ: 1567-01-025

URBAN COLLECTOR

FROM: EL DORADO PKWY

TO: US 380

DESIGN SPEED = 40 MI/HR

PROJECT LENGTH: 4.696 MI

SEPTEMBER 2007

DENTON COUNTY

SCALE: HORIZONTAL 1"=100'

VERTICAL 1"=10'

ROLL 3 OF 3

NOT A
BIDDING
DOCUMENT

ENGINEER: MOHAMMED K. BUR
NAME: MOHAMMED K. BUR
DATE: 09/12/2007
SIGNATURE

© 2007 by Texas Department of Transportation. All rights reserved.