

CONCEPTUAL TOLL PLAN SH 161 - FROM IH 20 TO SH 183

SH 161: FROM IH 20 TO US 183
 CSJs:
 2964-01-013 (ENVIRONMENTAL)
 2964-01-036 (ELECTRONIC TOLL COLLECTION)

SH 161: FROM IH 20 TO US 183
 CSJs:
 2964-01-013 (ENVIRONMENTAL)
 2964-01-036 (ELECTRONIC TOLL COLLECTION)

PROJECT LENGTH = 10.8 MILES

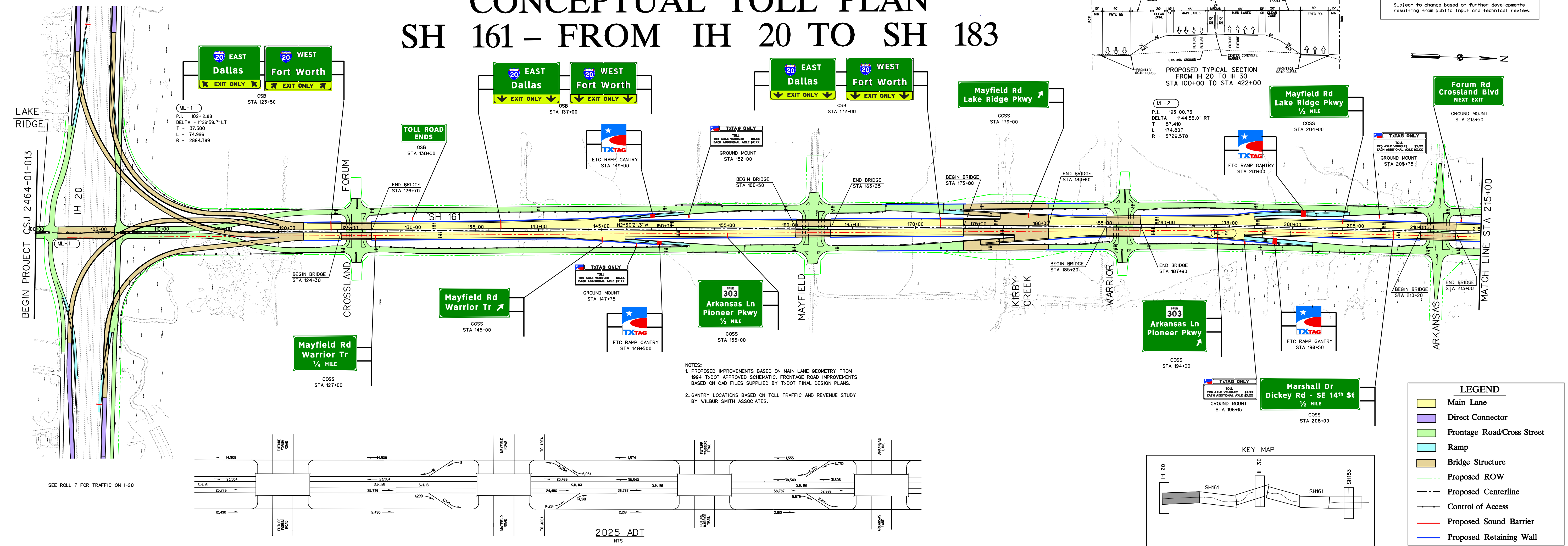
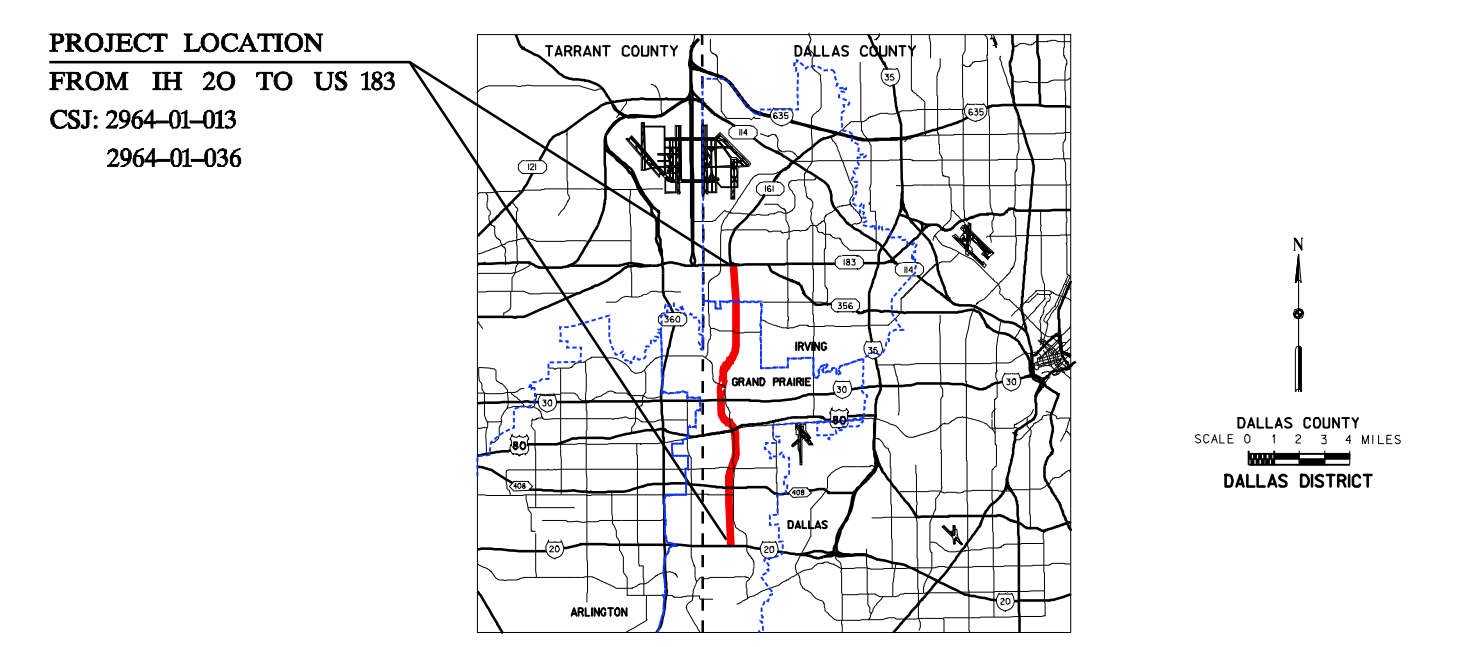
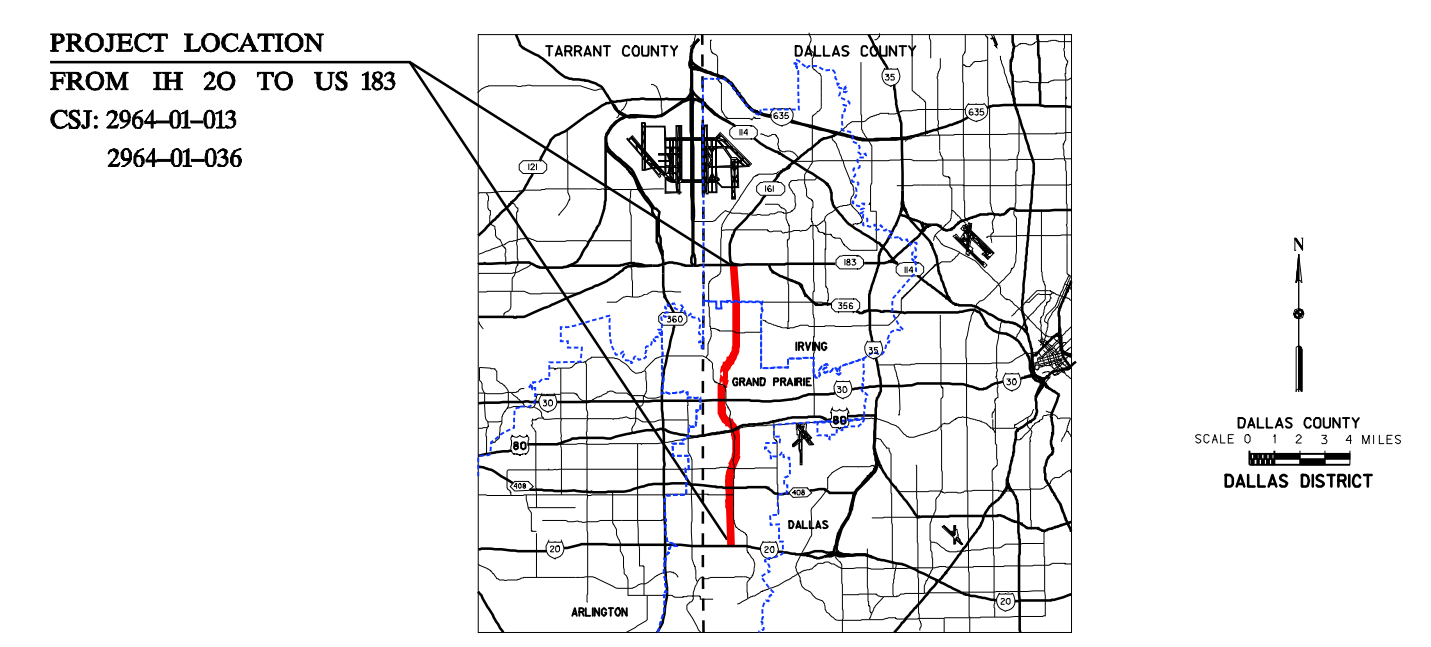
PROJECT LENGTH = 10.8 MILES

DESIGN SPEED
 MAIN LANES - 70 MPH - BASED ON URBAN INTERSTATE FREEWAY
 RAMPS - 50 MPH - BASED ON MID RANGE
 DIRECT CONNECTORS - 50 MPH - BASED ON MID RANGE
 FRONTAGE ROADS - 45 MPH
 CROSS STREETS - 45 MPH (30 MPH WHERE NOTED)

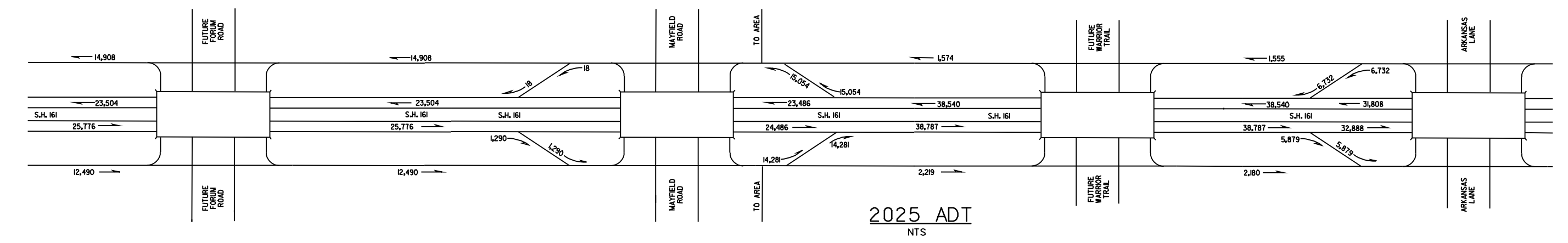
DESIGN SPEED
 MAIN LANES - 70 MPH - BASED ON URBAN INTERSTATE FREEWAY
 RAMPS - 50 MPH - BASED ON MID RANGE
 DIRECT CONNECTORS - 50 MPH - BASED ON MID RANGE
 FRONTAGE ROADS - 45 MPH
 CROSS STREETS - 45 MPH (30 MPH WHERE NOTED)

HIGHWAY CLASSIFICATION
 URBAN FREEWAY

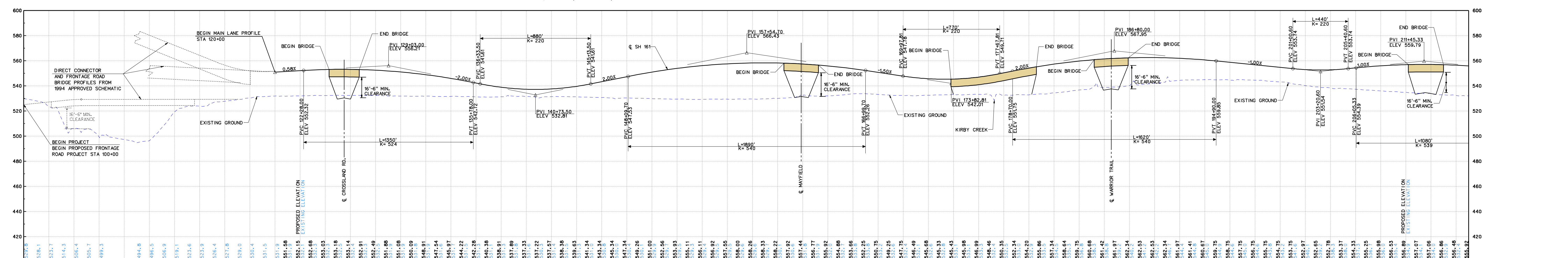
HIGHWAY CLASSIFICATION
 URBAN FREEWAY



NOTES:
 1. PROPOSED IMPROVEMENTS BASED ON MAIN LANE GEOMETRY FROM 1994 TxDOT APPROVED SCHEMATIC, FRONTAGE ROAD IMPROVEMENTS BASED ON CAD FILES SUPPLIED BY TxDOT FINAL DESIGN PLANS.
 2. GANTRY LOCATIONS BASED ON TOLL TRAFFIC AND REVENUE STUDY BY WILBUR SMITH ASSOCIATES.



NAME	NAME
SERIAL NO. XXXXX DATE:	SERIAL NO. XXXXX DATE:
REVIEWED BY HNTB: ELIZABETH METTING, P.E.	REVIEWED BY HNTB: ELIZABETH METTING, P.E.
SERIAL NO. 72425 DATE:	SERIAL NO. 72425 DATE:
DATE APPROVED	DATE SUBMITTED
NOT INTENDED FOR CONSTRUCTION, BIDDING OR PERMIT PURPOSES.	DATE REVISED
TABLE OF CONTENTS: PLANPROFILE ROLL 1-7	SEPTEMBER 2006
© 2006 by Texas Department of Transportation: All rights reserved.	ROLL 1 OF 7



NAME	NAME
SERIAL NO. XXXXX DATE:	SERIAL NO. XXXXX DATE:
REVIEWED BY HNTB: ELIZABETH METTING, P.E.	REVIEWED BY HNTB: ELIZABETH METTING, P.E.
SERIAL NO. 72425 DATE:	SERIAL NO. 72425 DATE:
DATE APPROVED	DATE SUBMITTED
NOT INTENDED FOR CONSTRUCTION, BIDDING OR PERMIT PURPOSES.	DATE REVISED
TABLE OF CONTENTS: PLANPROFILE ROLL 1-7	SEPTEMBER 2006
© 2006 by Texas Department of Transportation: All rights reserved.	ROLL 1 OF 7