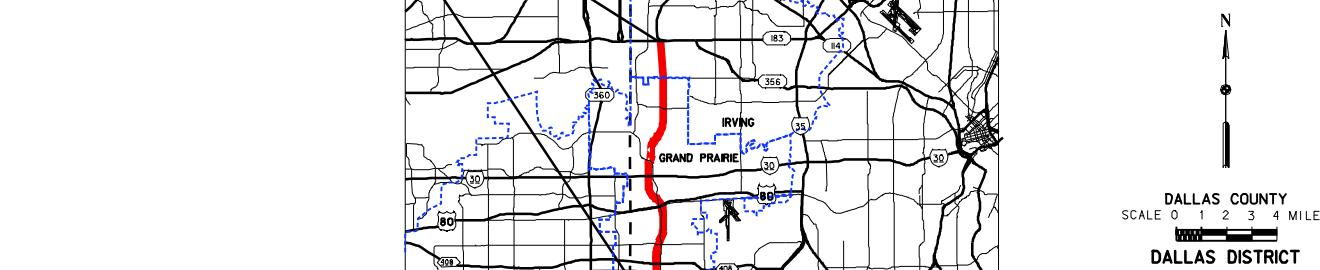
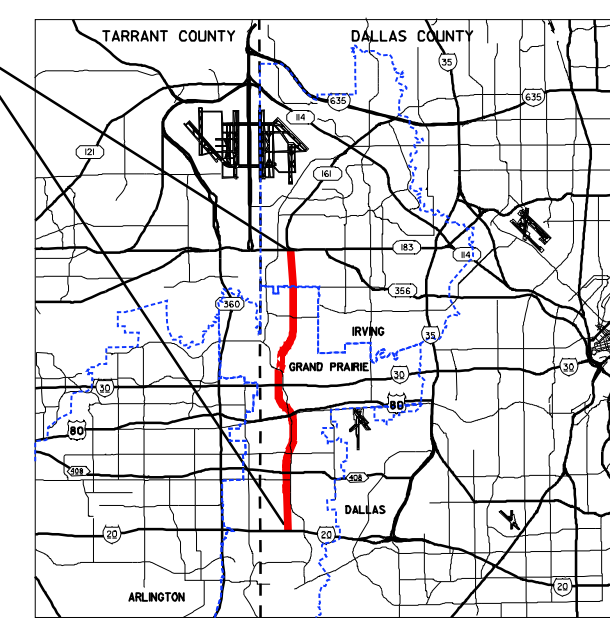


PROJECT LOCATION
FROM IH 20 TO US 183
CSJ: 2964-01-013
2964-01-036



NAME

SERIAL NO. XXXXX

DATE

REVIEWED BY HNTB:
ELIZABETH METTING, P.E.

SERIAL NO. 72425

DATE

NAME

SERIAL NO. XXXXX

DATE

SERIAL NO. 72425

DATE

DATE APPROVED

TABLE OF CONTENTS:

PLANPROFILE

ROLL

1-7

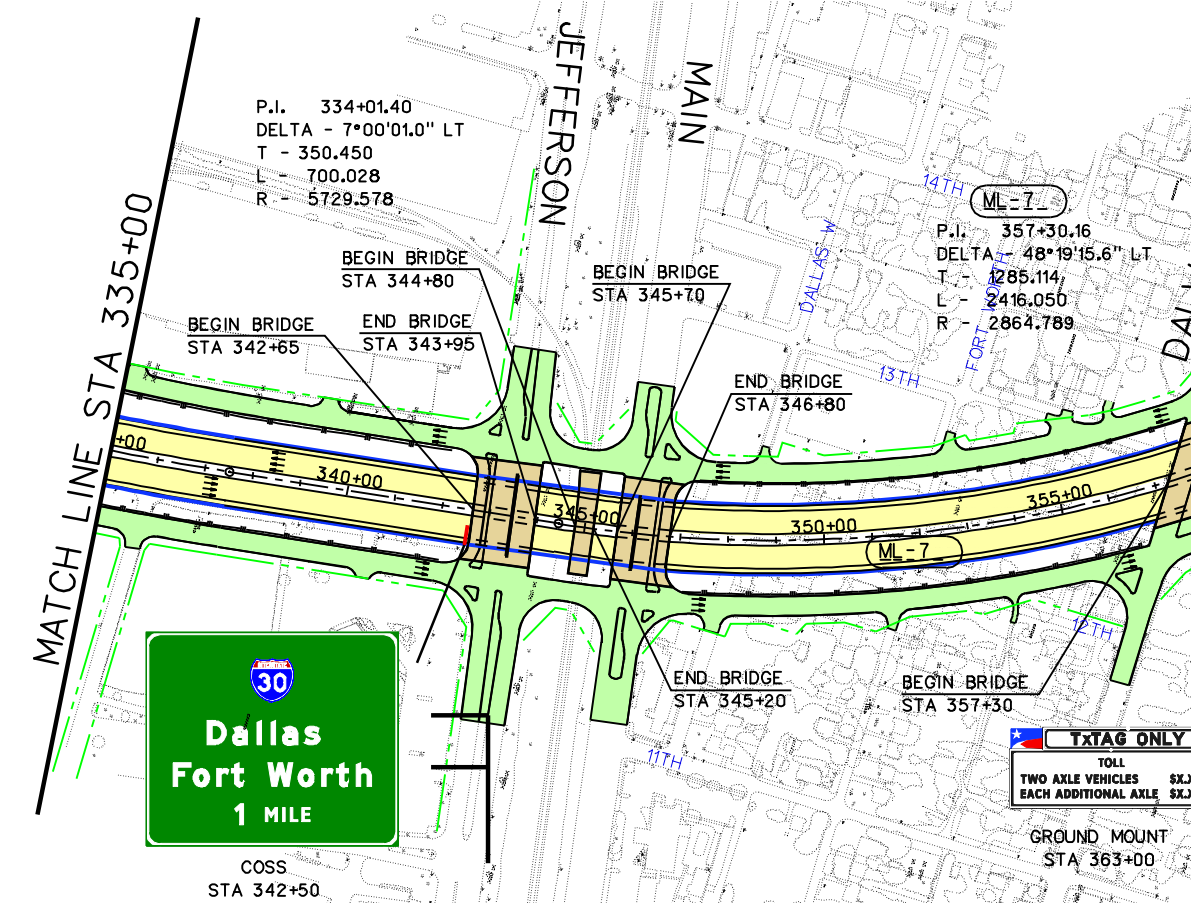
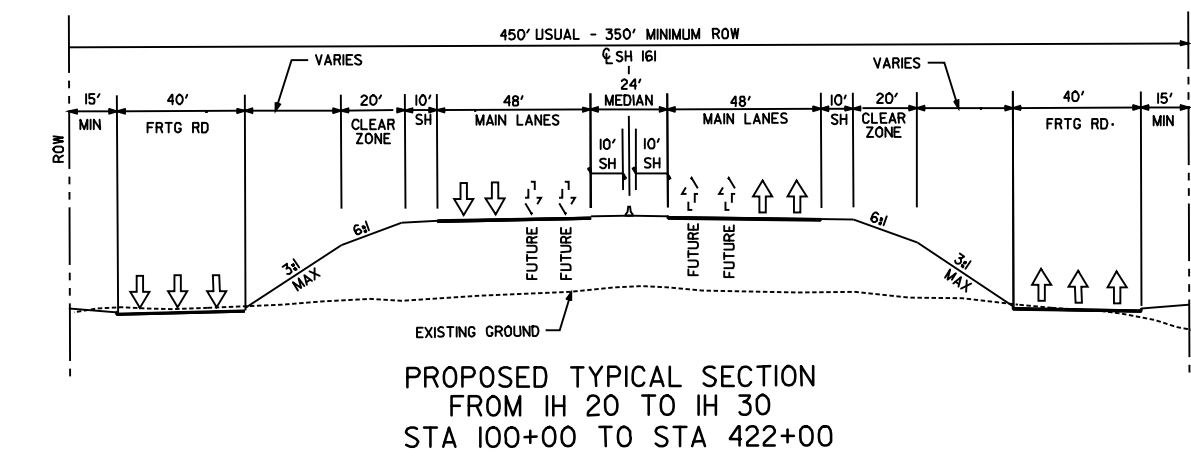
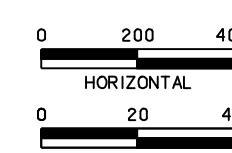
NOT INTENDED FOR
CONSTRUCTION, BIDDING
OR PERMIT PURPOSES.

DATE SUBMITTED

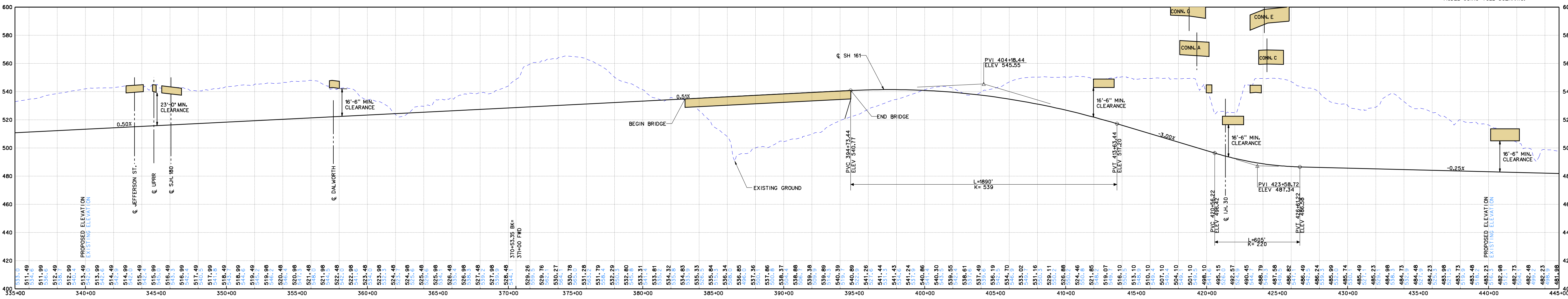
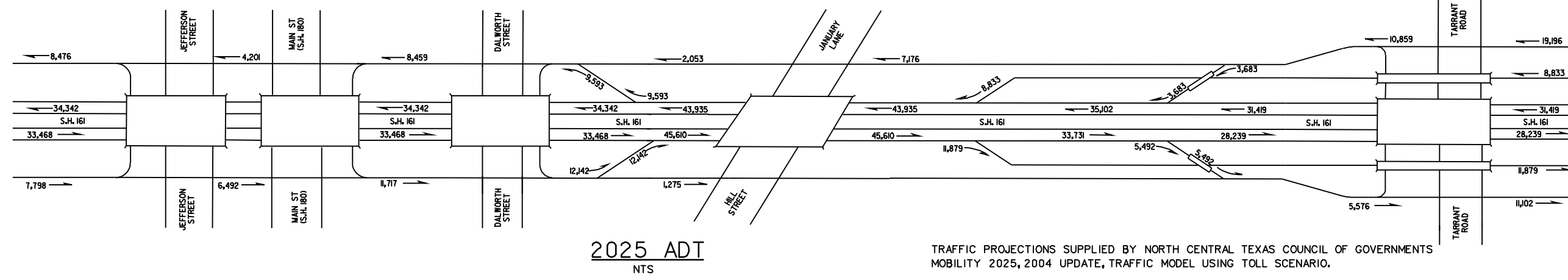
DATE REVISED

SEPTEMBER 2006

ROLL 3 OF 7



NOTES:
1. PROPOSED IMPROVEMENTS BASED ON MAIN LANE GEOMETRY FROM 1994 TxDOT APPROVED SCHEMATIC. FRONTAGE ROAD IMPROVEMENTS BASED ON CAD FILES SUPPLIED BY TxDOT FINAL DESIGN PLANS.
2. GANTRY LOCATIONS BASED ON TOLL TRAFFIC AND REVENUE STUDY BY WILBUR SMITH ASSOCIATES.

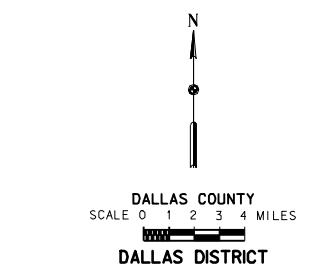
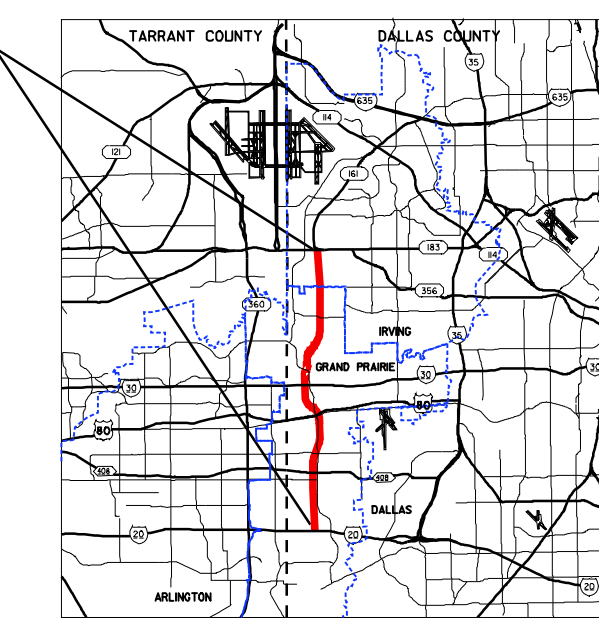


CONCEPTUAL TOLL PLAN SH 161 - FROM IH 20 TO SH 183

- LEGEND
- Main Lane
 - Direct Connector
 - Frontage Road/Cross Street
 - Ramp
 - Bridge Structure
 - Proposed ROW
 - Proposed Centerline
 - Control of Access
 - Proposed Sound Barrier
 - Proposed Retaining Wall

TRAFFIC PROJECTIONS SUPPLIED BY NORTH CENTRAL TEXAS COUNCIL OF GOVERNMENTS MOBILITY 2025, 2004 UPDATE, TRAFFIC MODEL USING TOLL SCENARIO.

PROJECT LOCATION
FROM IH 20 TO US 183
CSJ: 2964-01-013
2964-01-036



NAME

SERIAL NO. XXXXX

DATE

REVIEWED BY HNTB:
ELIZABETH METTING, P.E.

SERIAL NO. 72425

DATE

NAME

SERIAL NO. XXXXX

DATE

SERIAL NO. 72425

DATE

DATE APPROVED

TABLE OF CONTENTS:

PLANPROFILE

ROLL

1-7

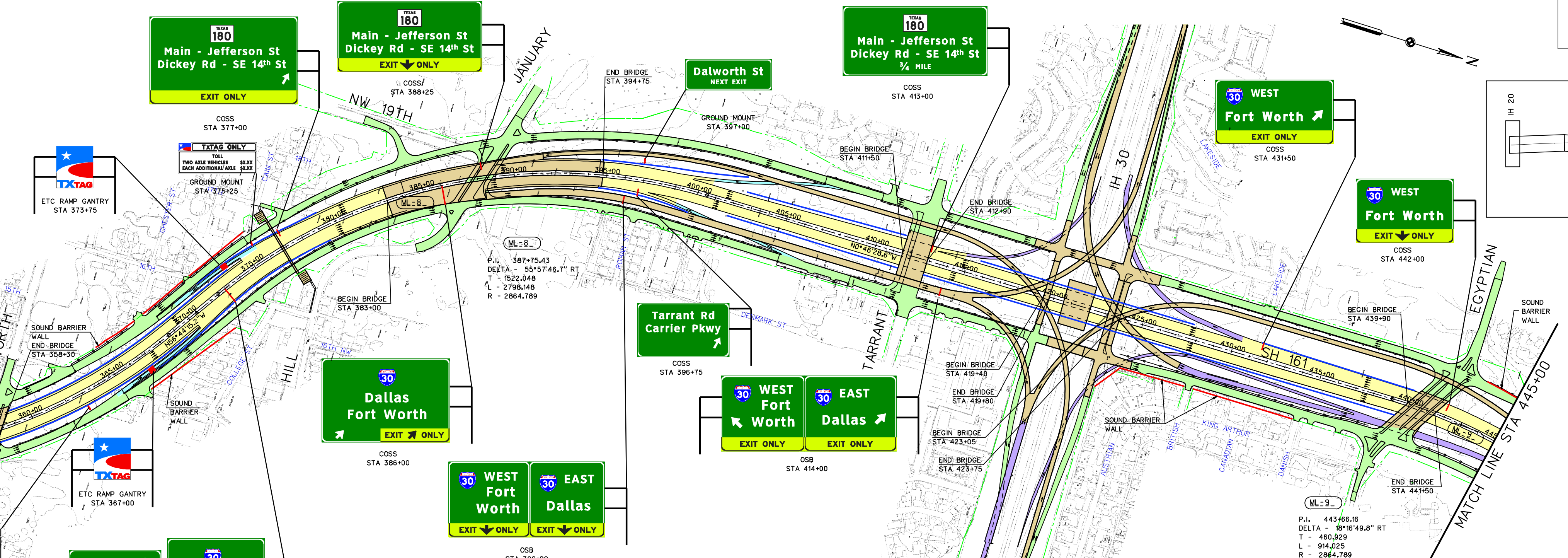
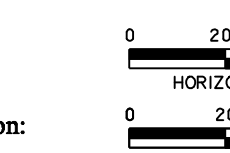
NOT INTENDED FOR
CONSTRUCTION, BIDDING
OR PERMIT PURPOSES.

DATE SUBMITTED

DATE REVISED

SEPTEMBER 2006

ROLL 3 OF 7



THESE ARE PRELIMINARY DESIGN CONCEPTS
Subject to change based on further developments
resulting from public input and technical review.

