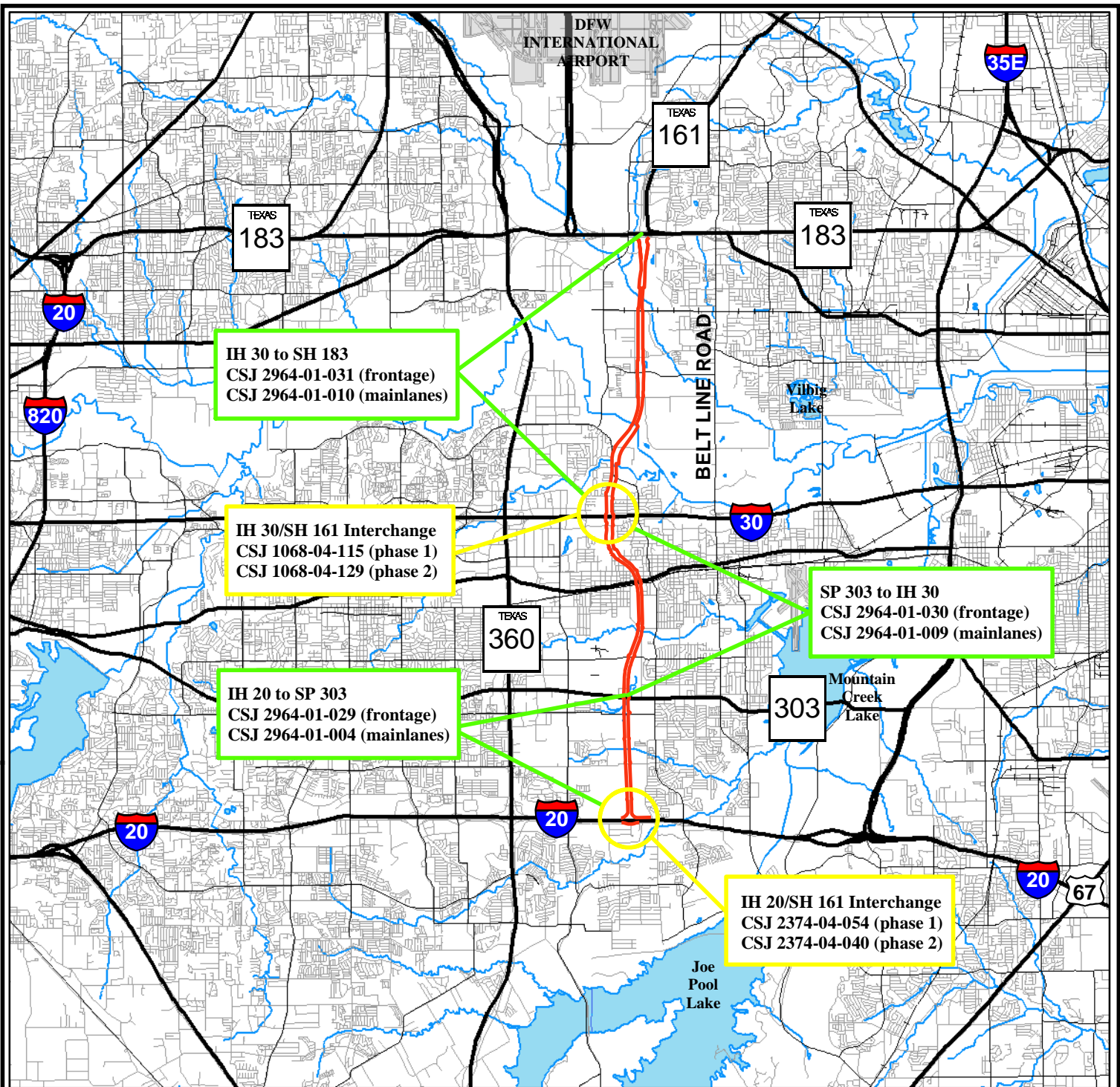


APPENDIX A: MAPS



0 1.25 2.5 5 Miles

© 2003 Texas Department of Transportation

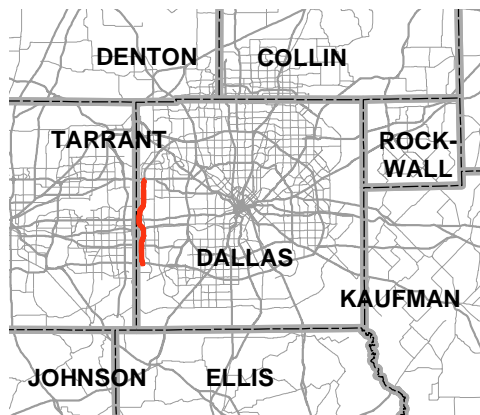
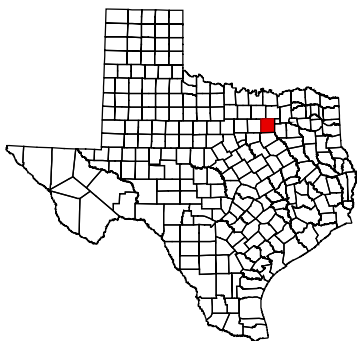
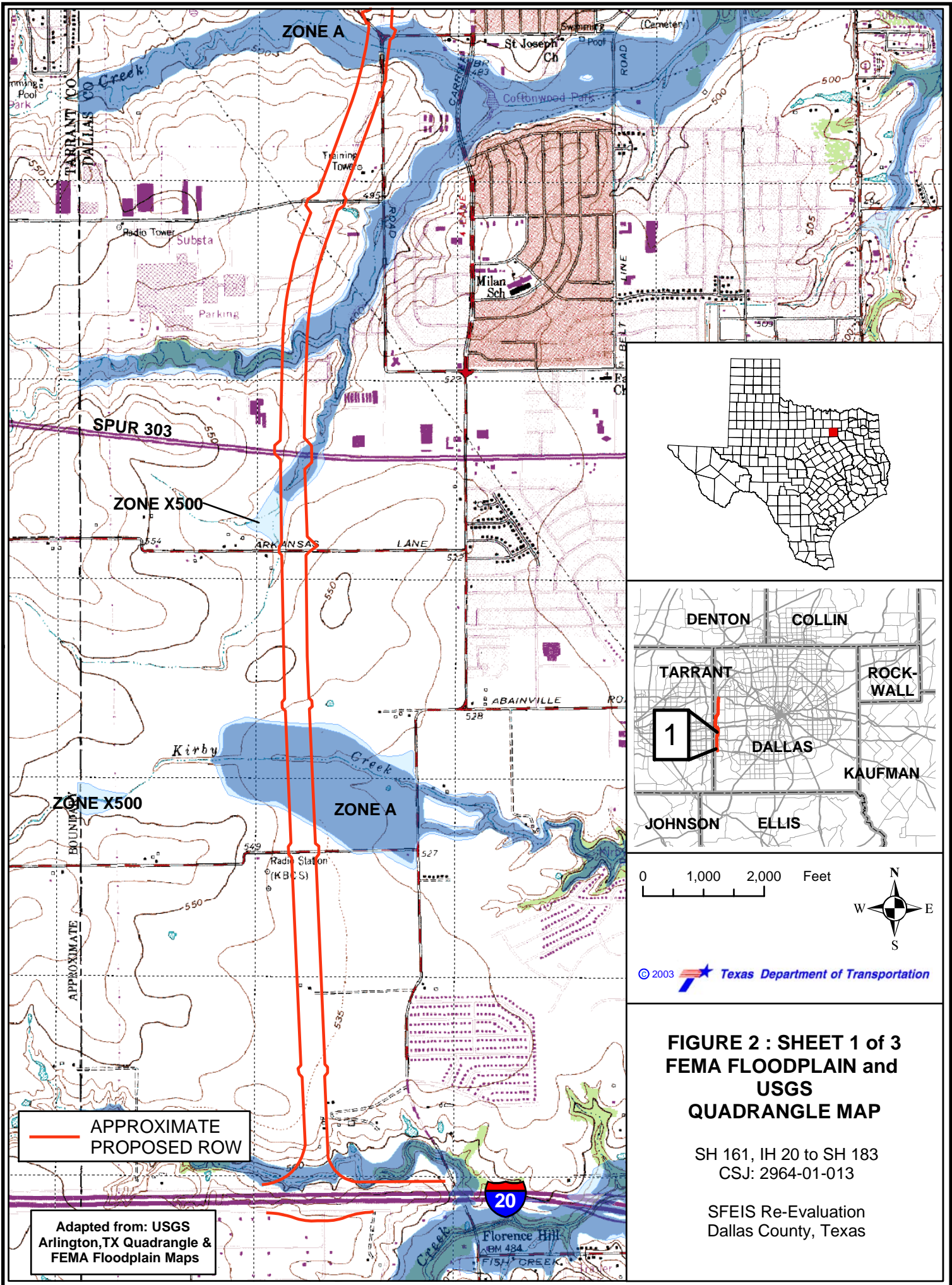


FIGURE 1
PROJECT LOCATION MAP

SH 161, IH 20 to SH 183
CSJ: 2964-01-013

SFEIS Re-Evaluation
Dallas County, Texas



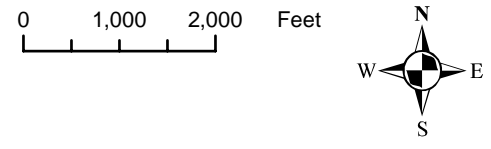
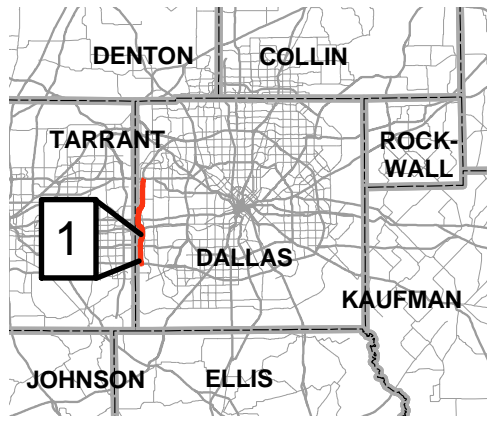
ZONE A

SPUR 303

ZONE X500

ZONE X500

ZONE A

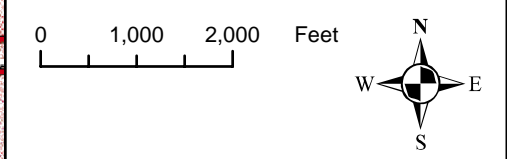
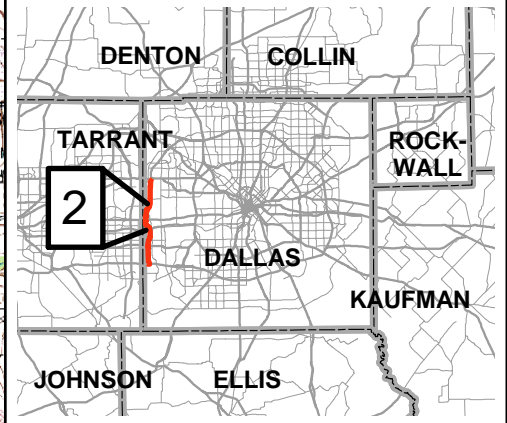
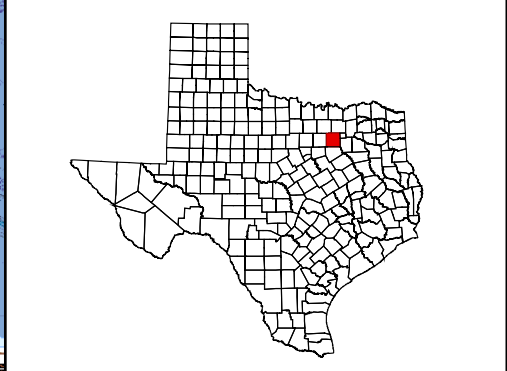
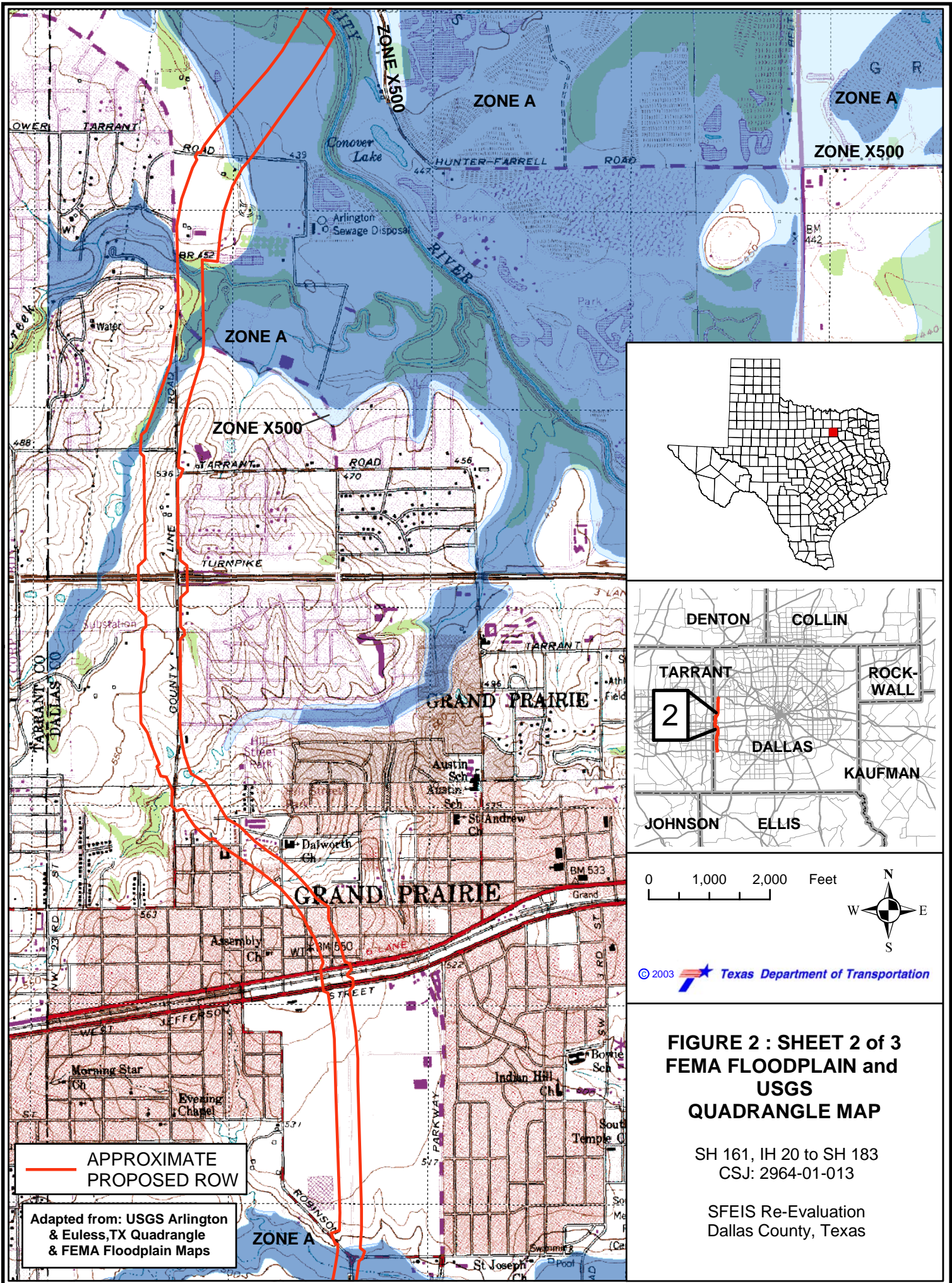


© 2003 Texas Department of Transportation

**FIGURE 2 : SHEET 1 of 3
FEMA FLOODPLAIN and
USGS
QUADRANGLE MAP**

SH 161, IH 20 to SH 183
CSJ: 2964-01-013

SFEIS Re-Evaluation
Dallas County, Texas

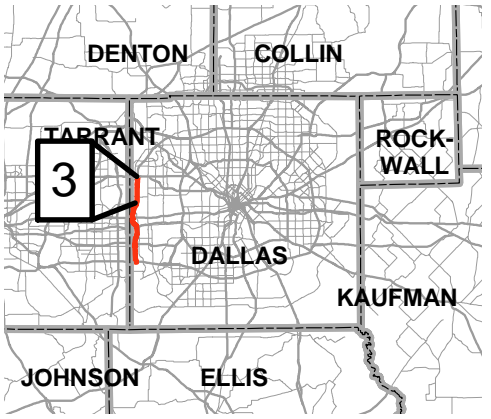
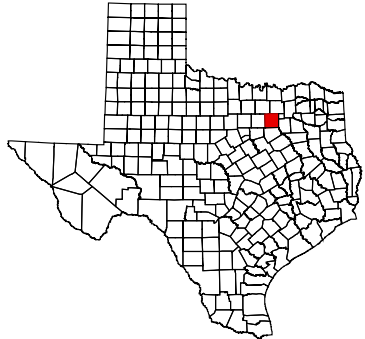
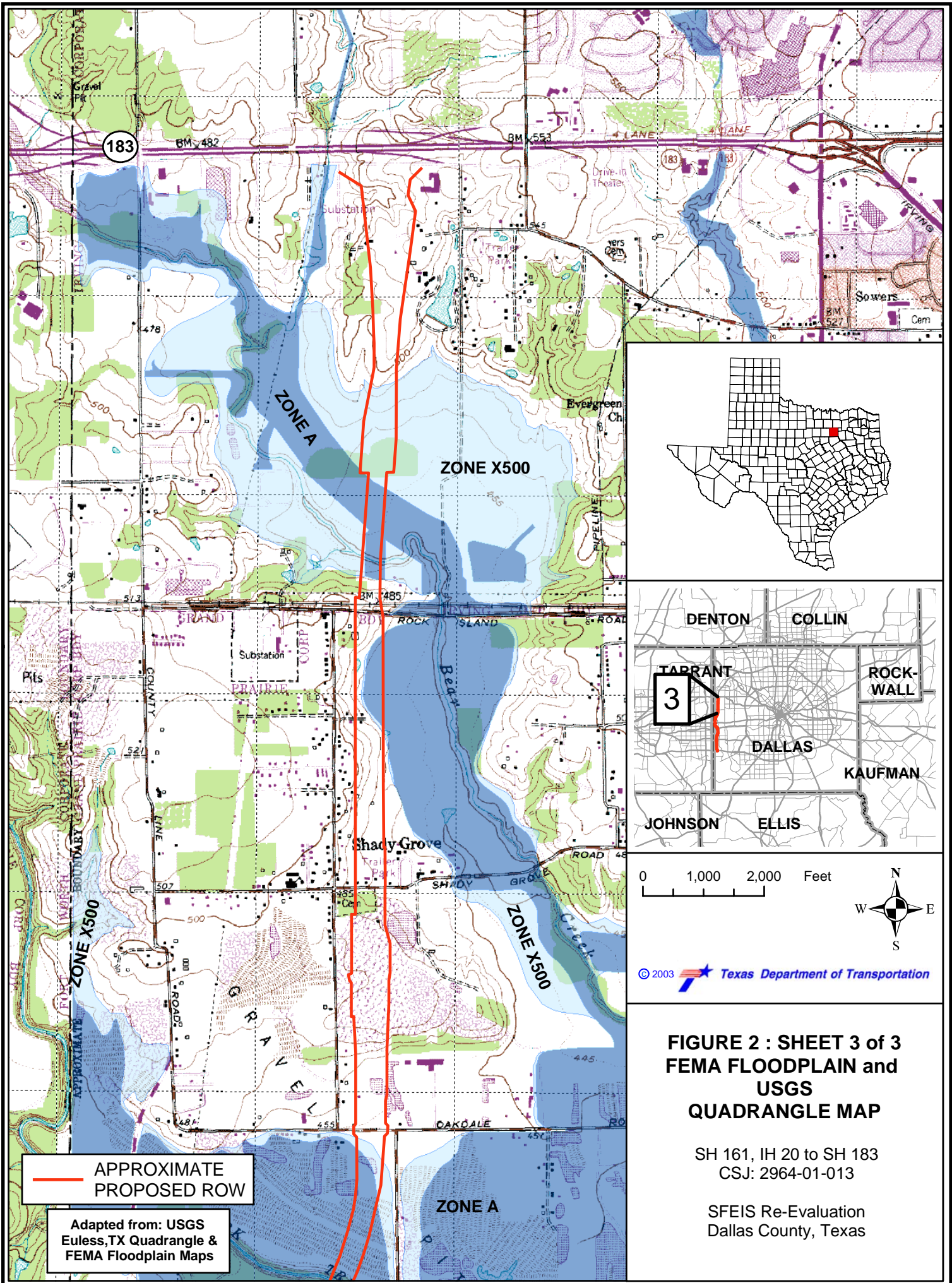


© 2003 Texas Department of Transportation

**FIGURE 2 : SHEET 2 of 3
FEMA FLOODPLAIN and
USGS
QUADRANGLE MAP**

SH 161, IH 20 to SH 183
CSJ: 2964-01-013

SFEIS Re-Evaluation
Dallas County, Texas



0 1,000 2,000 Feet



© 2003 Texas Department of Transportation

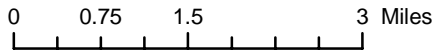
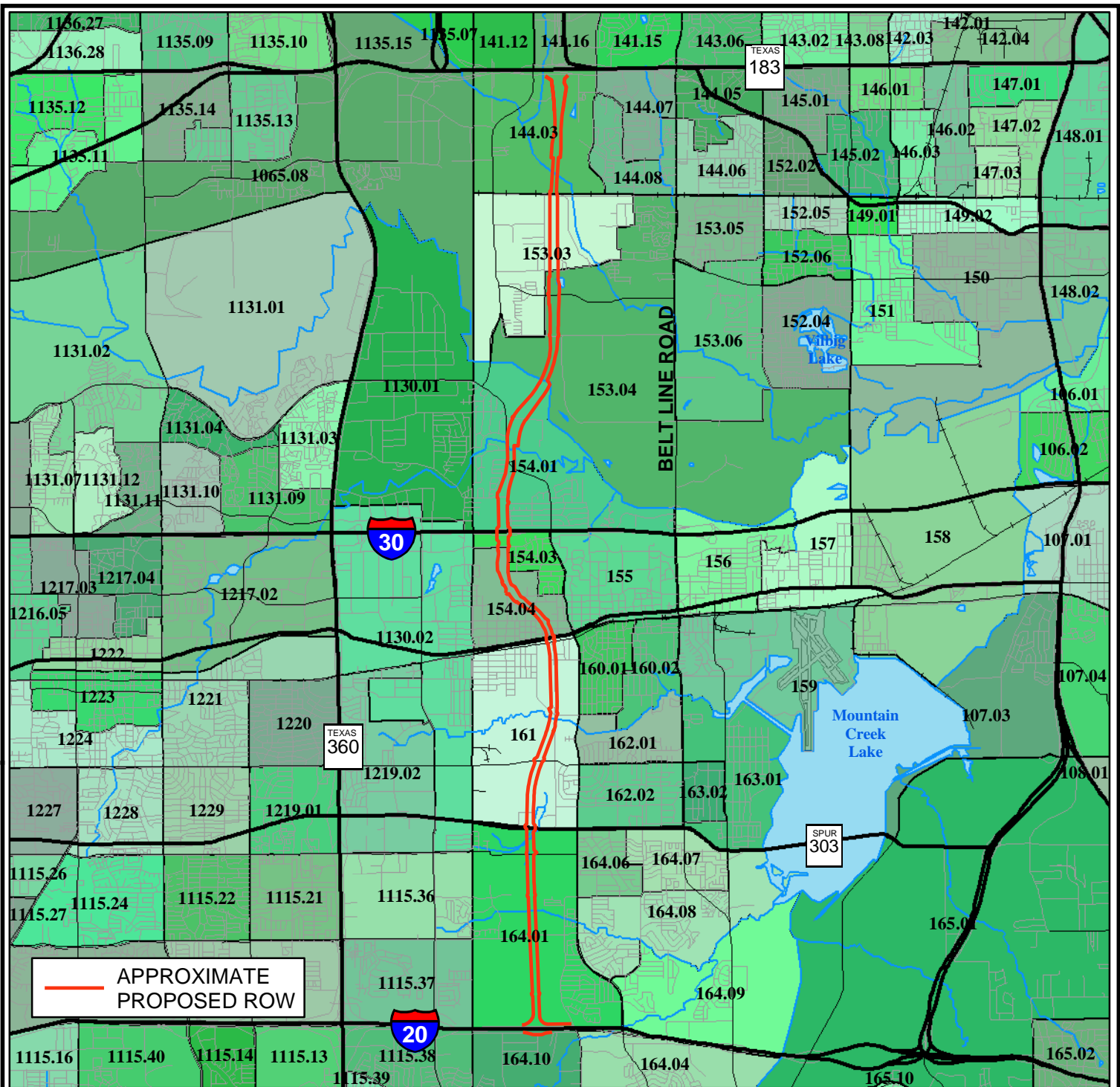
**FIGURE 2 : SHEET 3 of 3
FEMA FLOODPLAIN and
USGS
QUADRANGLE MAP**

SH 161, IH 20 to SH 183
CSJ: 2964-01-013

SFEIS Re-Evaluation
Dallas County, Texas

— APPROXIMATE
PROPOSED ROW

Adapted from: USGS
Eules, TX Quadrangle &
FEMA Floodplain Maps



© 2003 Texas Department of Transportation

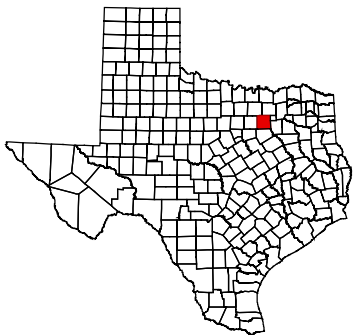
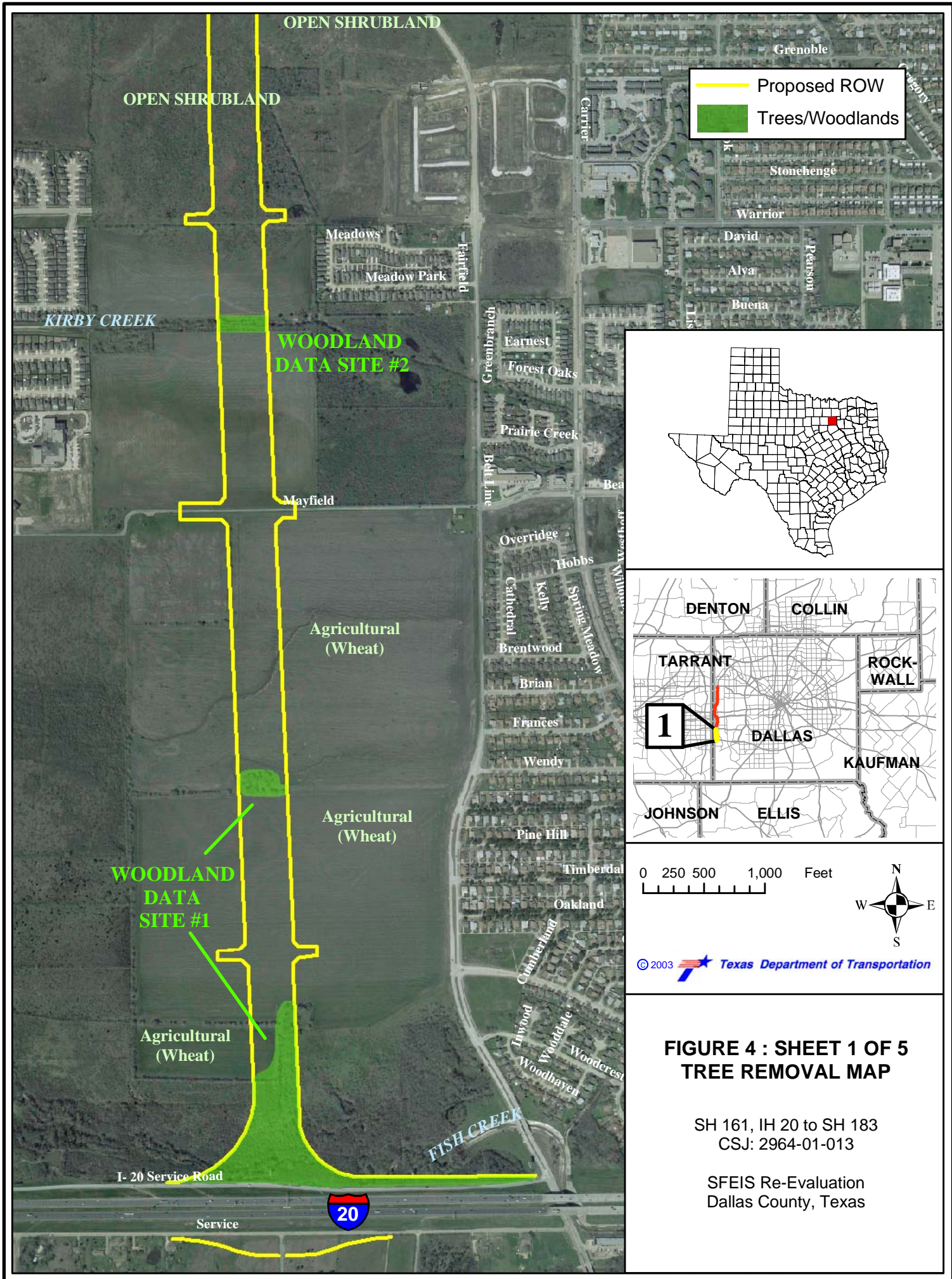


FIGURE 3 2000 CENSUS TRACTS

SH 161, IH 20 to SH 183
CSJ: 2964-01-013

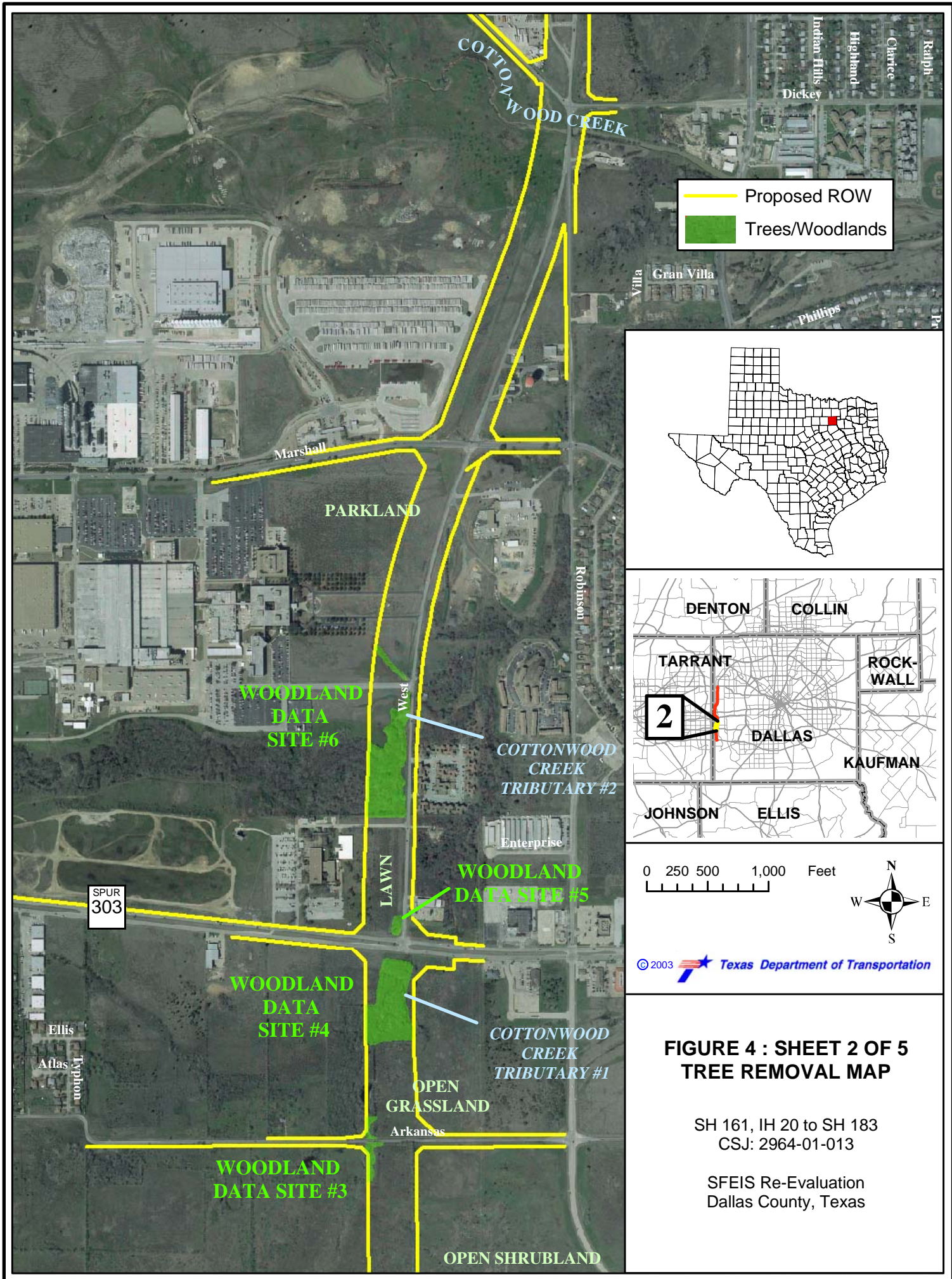
SFEIS Re-Evaluation
Dallas County, Texas



**FIGURE 4 : SHEET 1 OF 5
TREE REMOVAL MAP**

SH 161, IH 20 to SH 183
CSJ: 2964-01-013

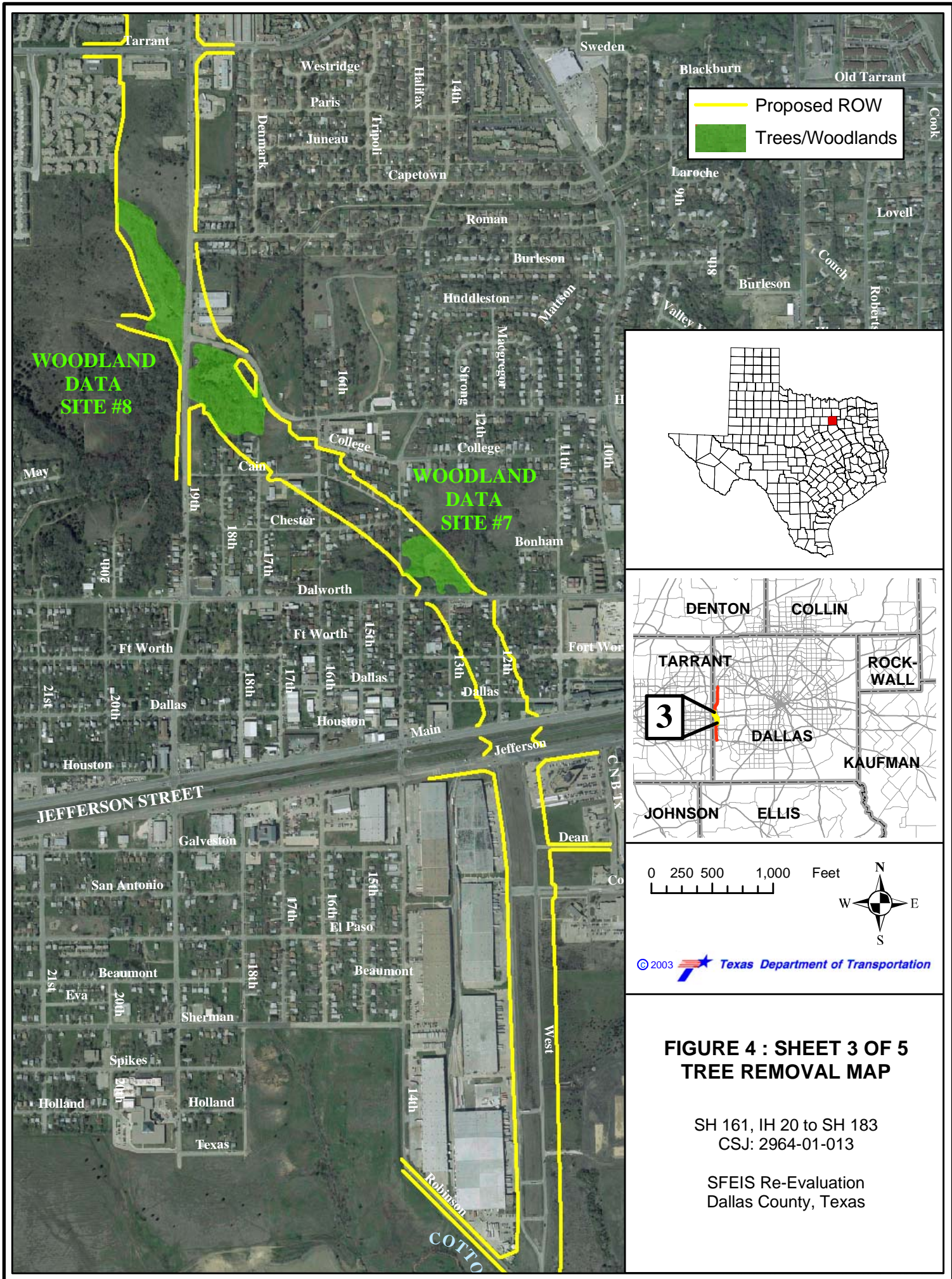
SFEIS Re-Evaluation
Dallas County, Texas



**FIGURE 4 : SHEET 2 OF 5
 TREE REMOVAL MAP**

SH 161, IH 20 to SH 183
 CSJ: 2964-01-013

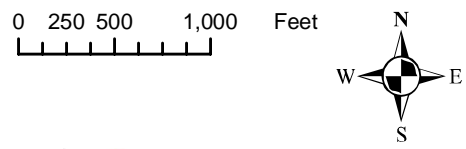
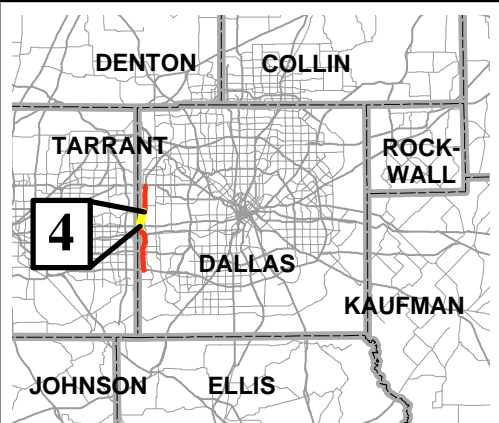
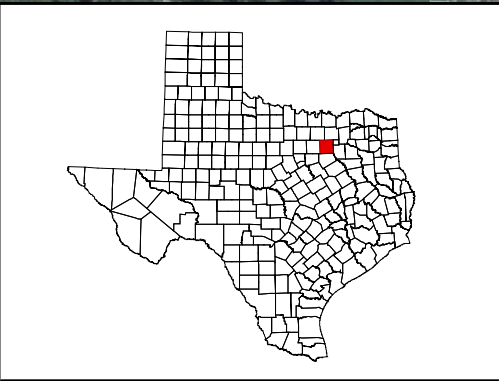
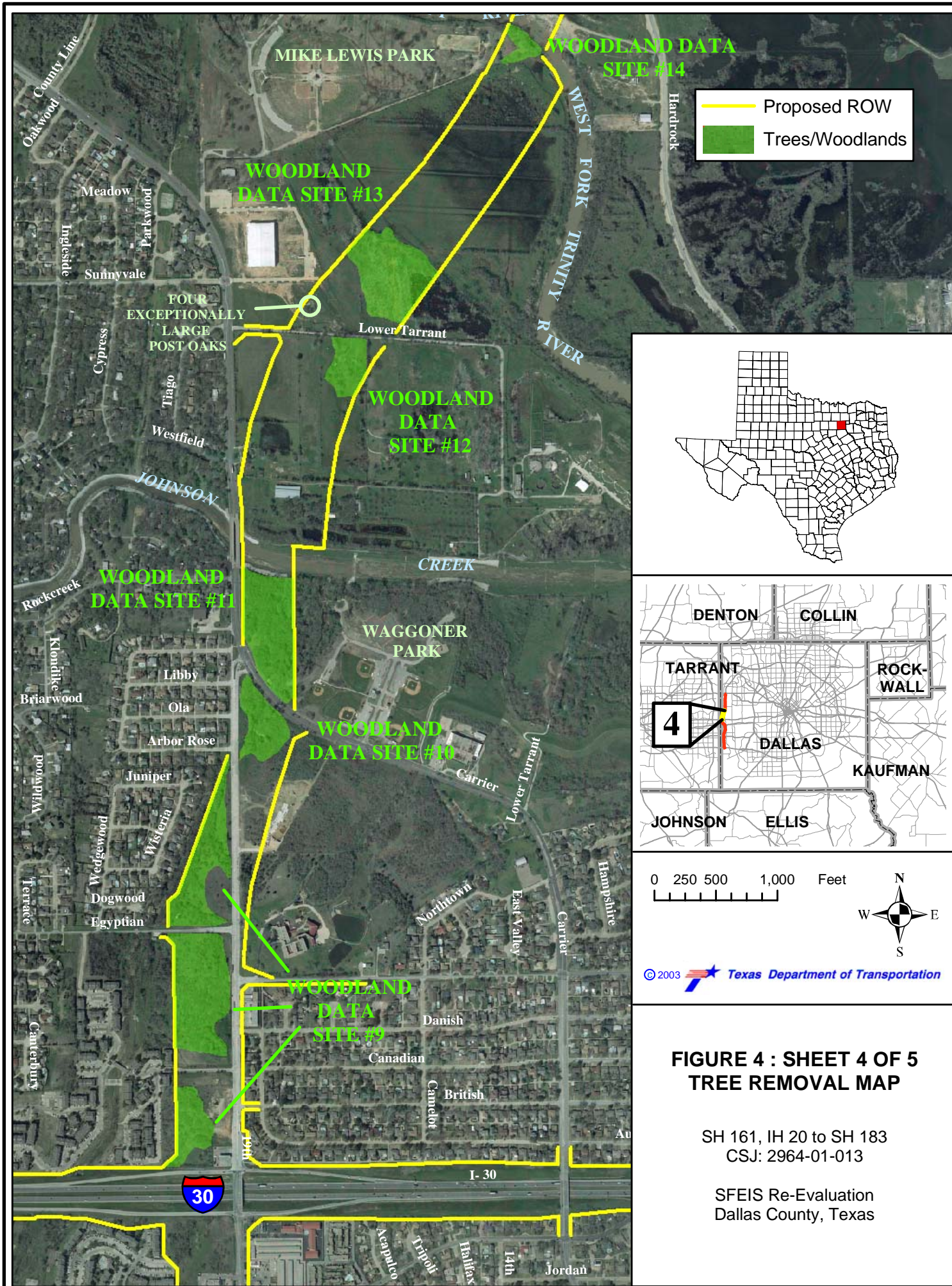
SFEIS Re-Evaluation
 Dallas County, Texas



**FIGURE 4 : SHEET 3 OF 5
TREE REMOVAL MAP**

SH 161, IH 20 to SH 183
CSJ: 2964-01-013

SFEIS Re-Evaluation
Dallas County, Texas

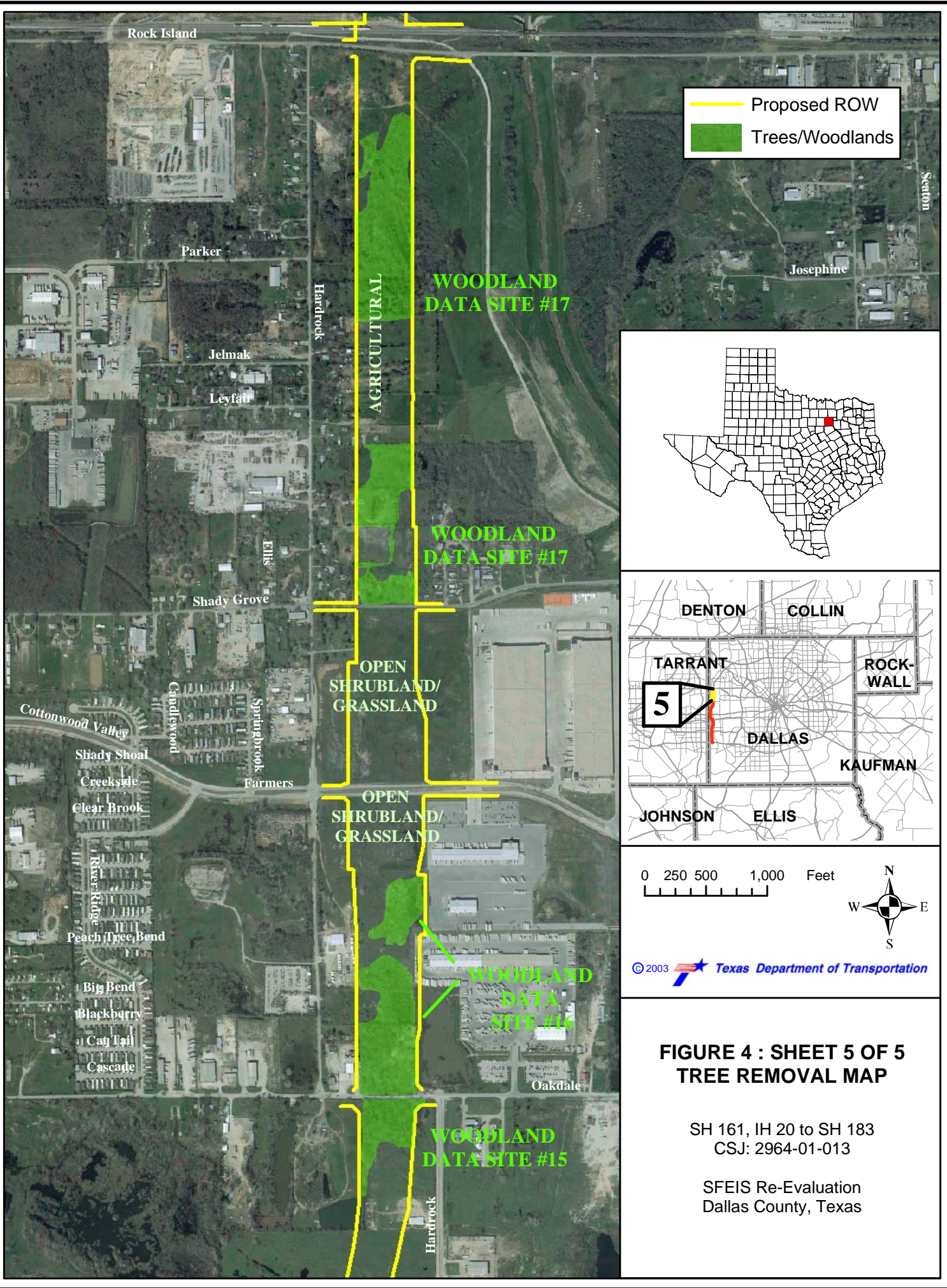


© 2003  Texas Department of Transportation

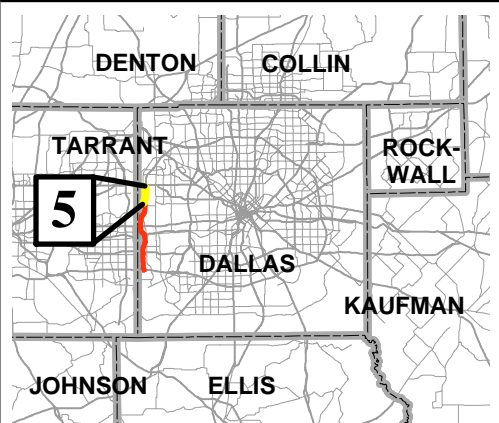
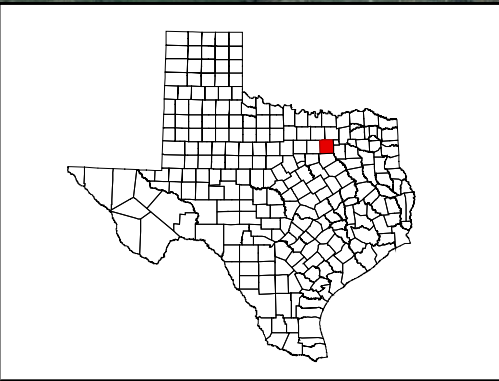
**FIGURE 4 : SHEET 4 OF 5
TREE REMOVAL MAP**

SH 161, IH 20 to SH 183
CSJ: 2964-01-013

SFEIS Re-Evaluation
Dallas County, Texas



— Proposed ROW
 Trees/Woodlands



0 250 500 1,000 Feet

© 2003 Texas Department of Transportation

**FIGURE 4 : SHEET 5 OF 5
TREE REMOVAL MAP**

SH 161, IH 20 to SH 183
CSJ: 2964-01-013

SFEIS Re-Evaluation
Dallas County, Texas