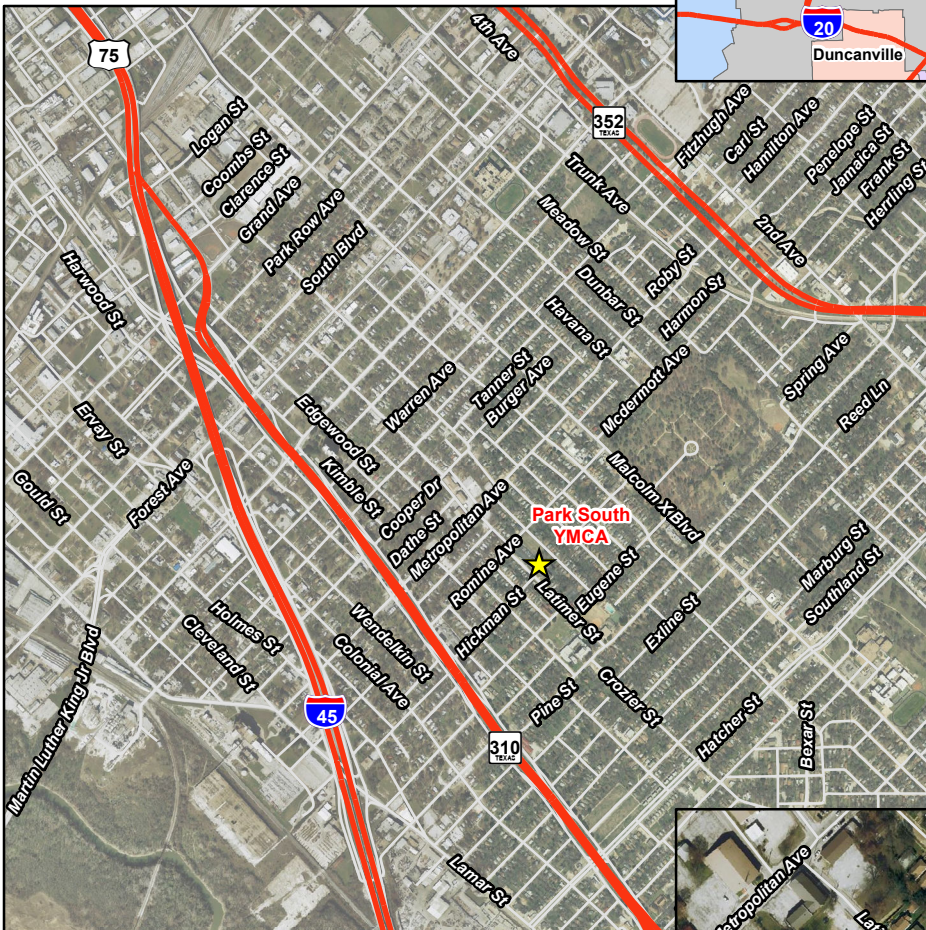
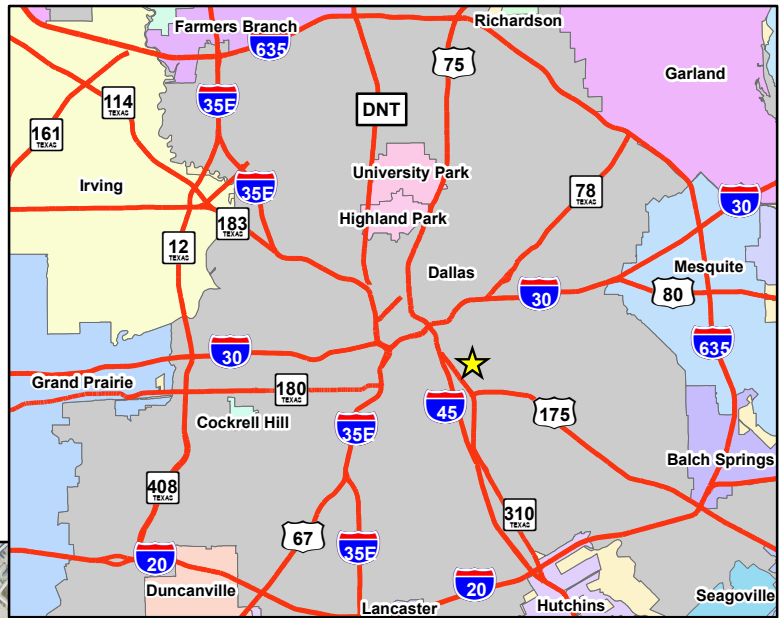




SM Wright Project Phase II-B Public Hearing

Location: Park South YMCA, Dallas

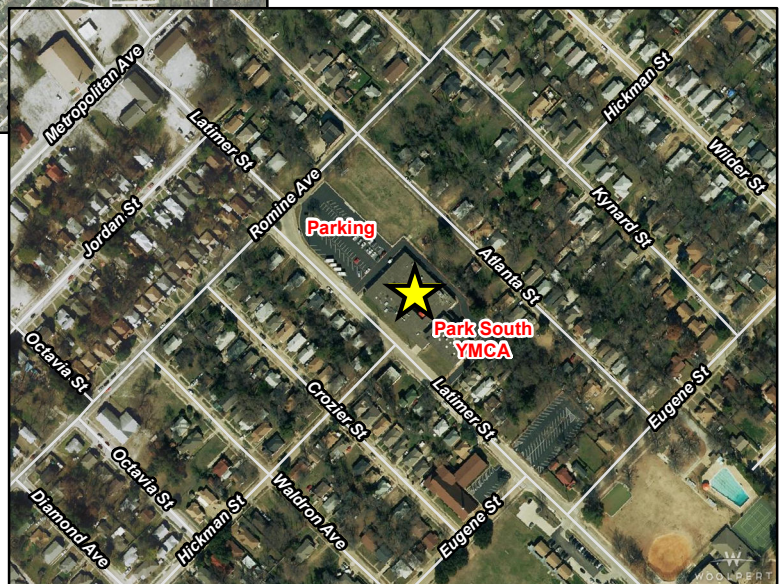
Thursday, December 15, 2016
Open House at 6:00 PM
Formal Presentation at 7:00 PM



Directions:

From South:
head north on US 175,
take exit toward Metropolitan Ave,
merge onto South Central Expy,
turn right onto Romine Ave,
stay on Romine Ave about 0.3 mile,
Park South YMCA is on the right.

From North:
head south on US 175,
take exit toward Metropolitan Ave,
merge onto S Cesar Chavez Blvd,
turn left onto Metropolitan Ave,
turn right onto Latimer St,
take the first left onto Romine Ave,
Park South YMCA is on the right.



Park South YMCA

2500 Romine Ave
Dallas, TX 75215

