

STATE OF TEXAS
DEPARTMENT OF TRANSPORTATION

PLANS OF PROPOSED
RIGHT OF WAY PROJECT
DALLAS COUNTY

S.H. 183

FROM: O'CONNOR ROAD
TO: 0.66 MILES WEST OF LOOP 12

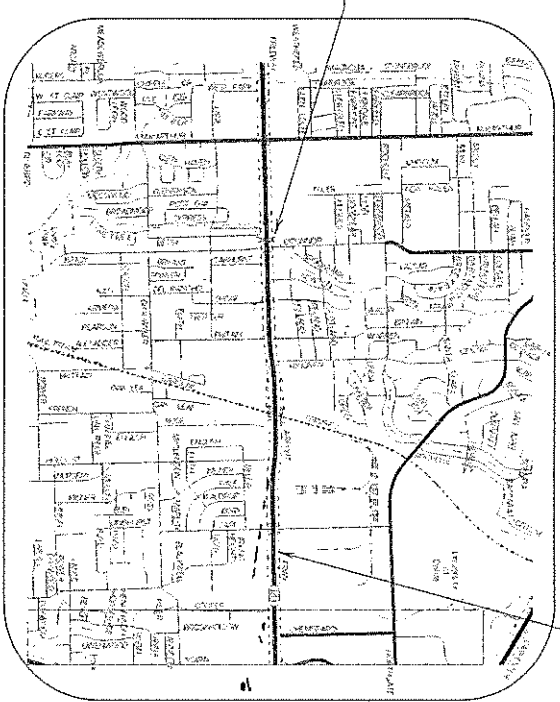
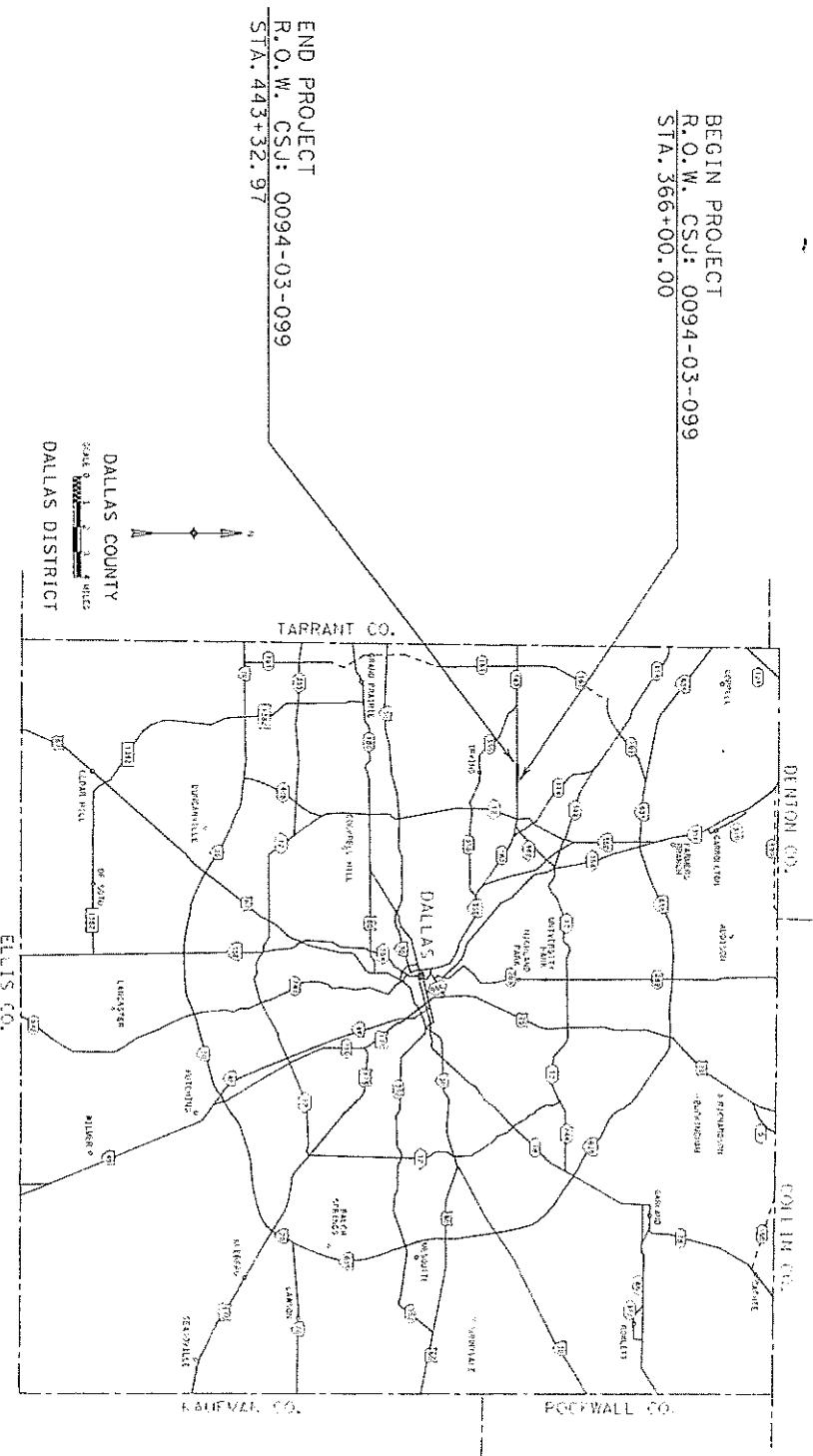
ROW CSJ NO. 0094-03-099
NET LENGTH OF PROJECT = 7,732.97 FEET = 1.465 MILES

INDEX OF SHEETS

SHEET NO.	DESCRIPTION
1	TITLE SHEET
2	CONTROL SHEET
3 - 15	R.O.W. PLAN SHEET

UTILITIES LOCATED WITHIN
PROJECT LIMITS
UTILITY COMPANY STATIONING

STATE	DIST.	COUNTY	SECTION	JOB	SHEET NO.
TEXAS	1B	DALLAS	03	099	1
R.O.W. CONSTRUCTION					055



NO EQUATIONS
NO EXCEPTIONS

R.O.W. PLAN SHEET LAYOUT SCALE: 1" = 50'

THIS MAP IS AN INTERNAL TxDOT DOCUMENT.
ITS CONTENTS SHALL NOT BE USED FOR ANY OTHER PURPOSE.

RECOMMENDED FOR ACQUISITION
OF RIGHT OF WAY
MARCH 9, 2005

RECOMMENDED FOR ACQUISITION
OF RIGHT OF WAY
MARCH 11, 2005

DESIGN ENGINEER

FINAL APPROVAL

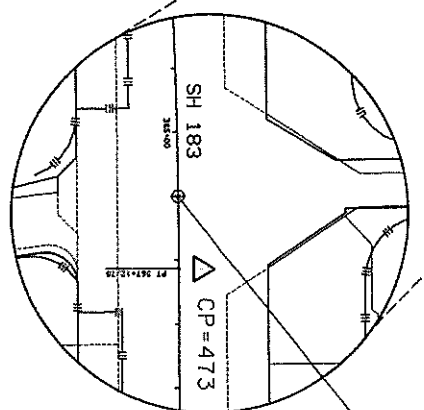
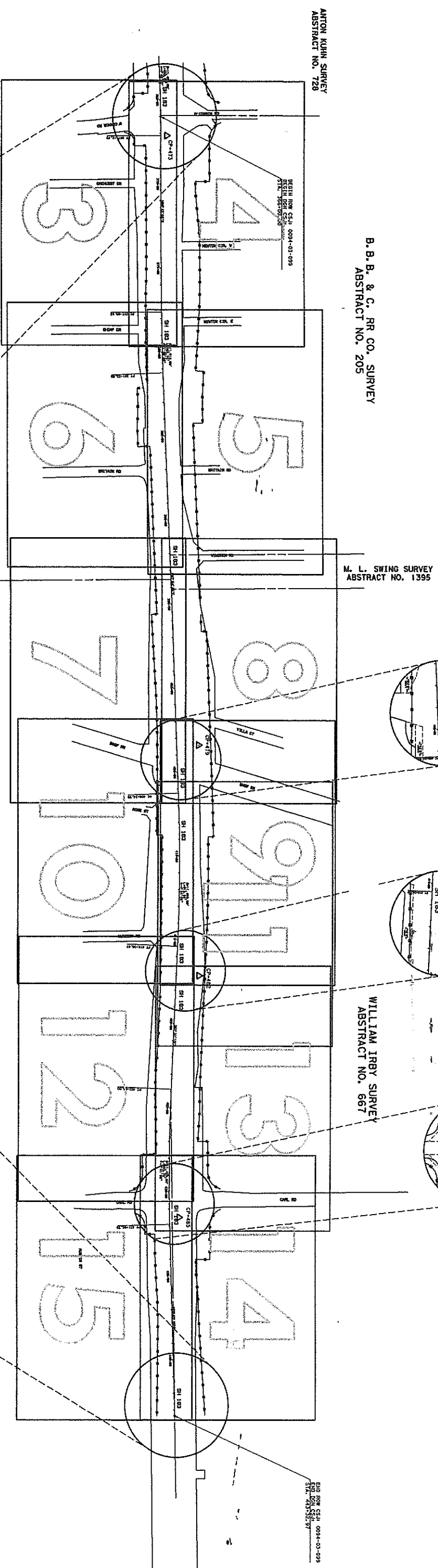
DISTRICT ENGINEER

CONVENTIONAL SIGNS

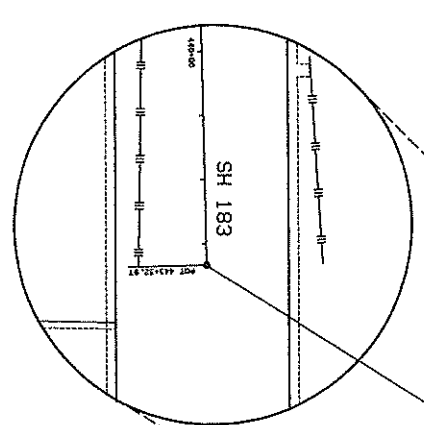
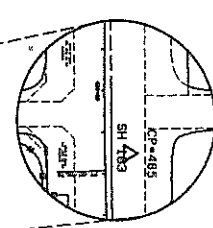
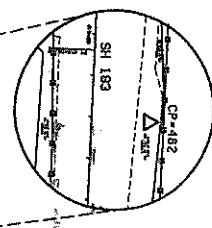
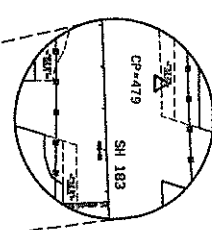
- EXIST. ROW LINE
- NEW ROW LINE
- PROPERTY LINE
- COUNTY LINE
- CONTROL OF ACCESS LINE
- SURVEY LINE
- FENCE
- CITY LIMITS
- RAILROAD
- RAILROAD STRUCTURE
- IRON ROD SET UNLESS OTHERWISE NOTED
- PARCEL NUMBER

THE SHADED SHAPES ARE SHOWING THE PROPOSED ROADWAY.
BASIS OF BEARING: N. A. D. 83, NORTH CENTRAL ZONE
COMBINED SURFACE ADJUSTMENT FACTOR 1.000136505
ALL COORDINATES COORDINATES ARE SURFACE ADJUSTED.

CONTROL MONUMENT	NORTHING	EASTING
BEGIN PROJECT (S. H. 183)	6,991,902.349	2,444,475.771
CP = 473	6,991,938.890	2,444,589.967
CP = 479	6,992,128.092	2,448,212.437
CP = 482	6,992,133.262	2,449,586.872
CP = 485	6,992,018.158	2,451,024.029
END PROJECT (S. H. 183)	6,991,991.343	2,432,209.323



DETAIL "N.T.S."



DETAIL "N.T.S."



18	DALLAS	0094	03	0991	2
6	TEXAS	FEDERAL AID PROJECT NO.	SH 183		
		COUNTY	SHEET NO.		

ALL BEARINGS ARE ON THE TEXAS STATE PLANE COORDINATE SYSTEM, NAD 83 (1993 ADJUSTED). NORTH CENTRAL ZONE. ALL DISTANCES AND COORDINATES SHOWN ARE SURFACE AND MAY BE CONVERTED TO GRID BY DIVIDING BY TPODOT CONVERSION FACTOR OF 1.000136506.

CONTROL MAP SHEET NOT TO THE SAME SCALE AS THE RIGHT OF WAY PLAN SHEETS

CITY OF IRVING

ANTON KUHN SURVEY
ABSTRACT NO. 728

SH 183

B.B. & C. RR CO. SURVEY
ABSTRACT NO. 205

SEE SHEET NO. 4 FOR PARCELS
4, 5, 6, 7, 8, 9, 13 AND 15

BEGIN CONTROL: 0094-03-009
STATION: 366+00.00

370+00

NS89°43'03"E

375+00

PT 367-12.75

BEGIN CONTROL
OF ACCESS LINE

NS00°30'5"E

PT 367-12.75

NS89°28'36"W

PT 367-12.75

NS89°28'36"W

PT 367-12.75

NS89°28'36"W

PT 367-12.75

NS89°28'36"W

PT 367-12.75

NS89°28'36"W

PT 367-12.75

NS89°28'36"W

PT 367-12.75

NS89°28'36"W

PT 367-12.75

NS89°28'36"W

PT 367-12.75

NS89°28'36"W

PT 367-12.75

NS89°28'36"W

PT 367-12.75

STATE OF TEXAS
COUNTY OF TARRANT
CITY OF IRVING
BRASWOOD ADDITION NO. 2
VOL. 83185, PG. 1907
D.R.D.C.T.

PART LOT A
OHMURST ADDITION
VOL. 30, PG. 19
D.R.D.C.T.

PART LOT B
OHMURST ADDITION
VOL. 30, PG. 19
D.R.D.C.T.

SIERRA LAND ADDITION
LOT 1
VOL. 80084, PG. 1387
D.R.D.C.T.

IC LEASING, INC.
VOL. 12630, PG. 1263
D.R.D.C.T.

INDOTRONIC INC.
VOL. 200063, PG. 0477
D.R.D.C.T.

CAMPBELL FAMILY PARTNERSHIP, L.P.
VOL. 97029, PG. 0447
D.R.D.C.T.

HEHNS INVESTMENTS TEXAS, L.P.
VOL. 200337, PG. 2169
D.R.D.C.T.

JOHN C. READ SURVEY
ABSTRACT NO. 1182

BRASWOOD ADDITION NO. 2
VOL. 83185, PG. 1907
D.R.D.C.T.

LOT 15
BLOCK 3
VOL. 29, PG. 75
M.R.D.C.T.

LOT 14
BLOCK 3
VOL. 29, PG. 75
M.R.D.C.T.

LOT 13
BLOCK 3
VOL. 29, PG. 75
M.R.D.C.T.

LOT 12
BLOCK 3
VOL. 29, PG. 75
M.R.D.C.T.

LOT 11
BLOCK 3
VOL. 29, PG. 75
M.R.D.C.T.

LOT 10
BLOCK 3
VOL. 29, PG. 75
M.R.D.C.T.

LOT 9
BLOCK 3
VOL. 29, PG. 75
M.R.D.C.T.

LOT 8
BLOCK 3
VOL. 29, PG. 75
M.R.D.C.T.

LOT 7
BLOCK 3
VOL. 29, PG. 75
M.R.D.C.T.

LOT 6
BLOCK 3
VOL. 29, PG. 75
M.R.D.C.T.

LOT 5
BLOCK 3
VOL. 29, PG. 75
M.R.D.C.T.

LOT 4
BLOCK 3
VOL. 29, PG. 75
M.R.D.C.T.

LOT 3
BLOCK 3
VOL. 29, PG. 75
M.R.D.C.T.

LOT 2
BLOCK 3
VOL. 29, PG. 75
M.R.D.C.T.

LOT 1
BLOCK 3
VOL. 29, PG. 75
M.R.D.C.T.

1
JORGE R. ALMERA &
DANIEL ALMEYRA
DEED
VOL. PG.
285 S.F.
REM = 0.1770 ACRES

2
MANUEL F. SIGALA AND WIFE
DEED
VOL. PG.
682 S.F.
REM = 0.1737 ACRES

3
MOTIVA ENTERPRISES, L.L.C.
DEED
VOL. PG.
1843 S.F.
REM = 0.6251 ACRES

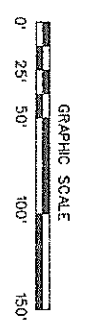
10
NATIONAL SELF
STORAGE, INC.
DEED
VOL. PG.
455 S.F.
REM = 2.8956 ACRES

11
IC LEASING, INC.
DEED
VOL. PG.
476 S.F.
REM = 0.3587 ACRES

12
NOVOTRONIC INC.
DEED
VOL. PG.
529 S.F.
REM = 0.3735 ACRES

14
CAMPBELL FAMILY
PARTNERSHIP, LP
DEED
VOL. PG.
1,667 S.F.
REM = 1.6235 ACRES

16
HEHNS INVESTMENTS
TEXAS, LP
DEED
VOL. PG.
2,705 S.F.
REM = 1.5999 ACRES



ALL BEARINGS ARE ON THE TEXAS STATE PLANE
COORDINATE SYSTEM, NAD 83 (1993 ADJ.)
NORTH CENTRAL ZONE. ALL DISTANCES AND
COORDINATES SHOWN ARE SURFACE AND MAY
BE CONVERTED TO GRID BY DIVIDING BY TxDOT
CONVERSION FACTOR OF 1.000365908.

JOHN C. READ SURVEY
ABSTRACT NO. 1182

CITY OF IRVING

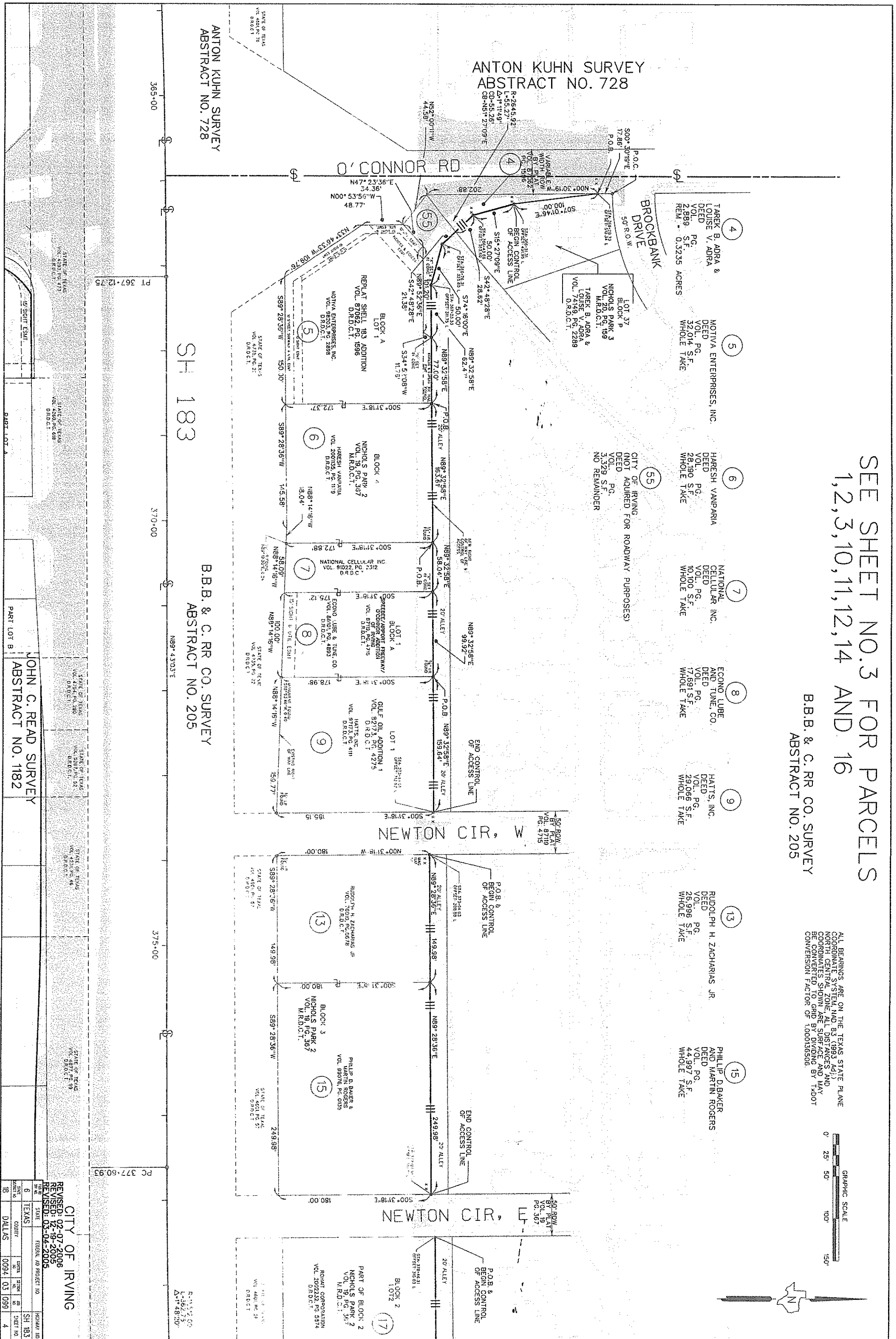
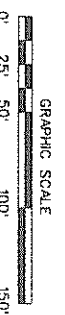
REVISED : 12-19-2005

DATE	STATE	FEDERAL JOB PROJECT NO.	SHIRAS NO.
6	TEXAS		SH 183
18		0094 03 1099	3

SEE SHEET NO. 3 FOR PARCELS 1, 2, 3, 10, 11, 12, 14 AND 16

B.B.B. & C. RR. CO. SURVEY
ABSTRACT NO. 205

ALL BEARINGS ARE ON THE TEXAS STATE PLANE
COORDINATE SYSTEM, NAD 83 (1993 ADJ.)
NORTH CENTRAL ZONE. ALL DISTANCES AND
COORDINATES SHOWN ARE SURFACE AND MAY
DIFFER FROM THE BENCH MARK AND MAY
CONVERSION FACTOR OF 1.000155300.



ANTON KUHN SURVEY
ABSTRACT NO. 728

SH 183

B.B.B. & C. RR. CO. SURVEY
ABSTRACT NO. 205

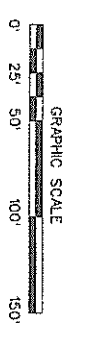
JOHN C. READ SURVEY
ABSTRACT NO. 1182

CITY OF IRVING
REVISED: 02-07-2006
REVISED: 12-19-2005
REVISED: 03-04-2005

PROJECT NO.	SHEET NO.	TOTAL SHEETS	DATE	BY	CHECKED BY
00941031099	4	28	03/09		

ALL BEARINGS ARE ON THE TEXAS STATE PLANE
 COORDINATE SYSTEM NAD 83 (1983 EARTH)
 NORTH CENTRAL ZONE. ALL DISTANCES AND
 COORDINATES SHOWN ARE SURFACE AND MAY
 BE CONVERTED TO GRID BY DIVIDING BY TADOIT
 CONVERSION FACTOR OF 1.0001365506.

SEE SHEET NO.6 FOR PARCELS
 18,20,22,27 AND 29

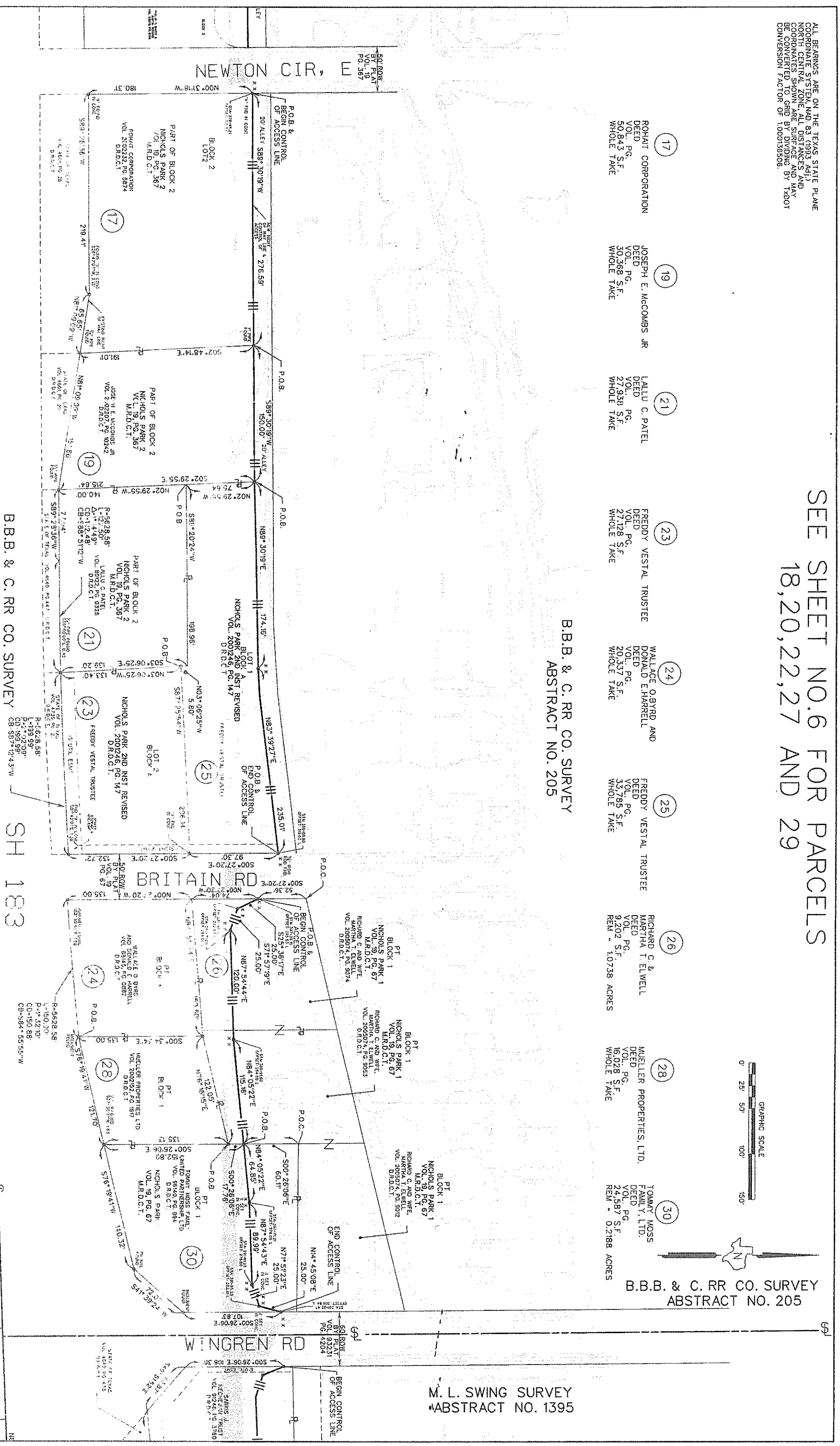


- (17) ROHAIT CORPORATION
 DEED VOL. PG. 50,843 S.F.
 WHOLE TAKE
- (19) JOSEPH E. MCCOMBS JR
 DEED VOL. PG. 30,368 S.F.
 WHOLE TAKE
- (21) LALLU C. PATEL
 DEED VOL. PG. 27,938 S.F.
 WHOLE TAKE
- (23) FREDDY VESTAL TRUSTEE
 DEED VOL. PG. 27,128 S.F.
 WHOLE TAKE
- (24) WALLACE O. BYRD AND DONALD E. HARRELL
 DEED VOL. PG. 20,337 S.F.
 WHOLE TAKE
- (25) FREDDY VESTAL TRUSTEE
 DEED VOL. PG. 33,785 S.F.
 WHOLE TAKE
- (26) RICHARD C. & MARTHA T. ELWELL
 DEED VOL. PG. 9,202 S.F.
 REM. = 10738 ACRES
- (28) MUELLER PROPERTIES, LTD.
 DEED VOL. PG. 16,028 S.F.
 WHOLE TAKE
- (30) TOMMY MOSS FAMILY, LTD.
 DEED VOL. PG. 24,187 S.F.
 REM. = 0.2188 ACRES

B.B.B. & C. RR CO. SURVEY
 ABSTRACT NO. 205

B.B.B. & C. RR CO. SURVEY
 ABSTRACT NO. 205

M. L. SWING SURVEY
 ABSTRACT NO. 1395



B.B.B. & C. RR CO. SURVEY
 ABSTRACT NO. 205

SH 183

JOHN C. READ SURVEY
 ABSTRACT NO. 1182

CITY OF IRVING

REVISED : 02-07-2006
 REVISED : 12-19-2005

DATE	BY	REVISION	DESCRIPTION
18	DALLAS	0094 03 099	5

STATE OF TEXAS
VOL. 4601 PG. 28
D.R.D.C.T.

SEE SHEET NO. 5 FOR PARCELS 17, 19, 21, 23, 24, 25, 26, 28 AND 30

B.B. & C. RR CO. SURVEY ABSTRACT NO. 205

SH 183

R-1-512.00
L-362.75
A-1-48.20"

380.00

R-5245.34
L-95.01
A-1-02-16"
CD-35.00
CB-N89°57'28"E

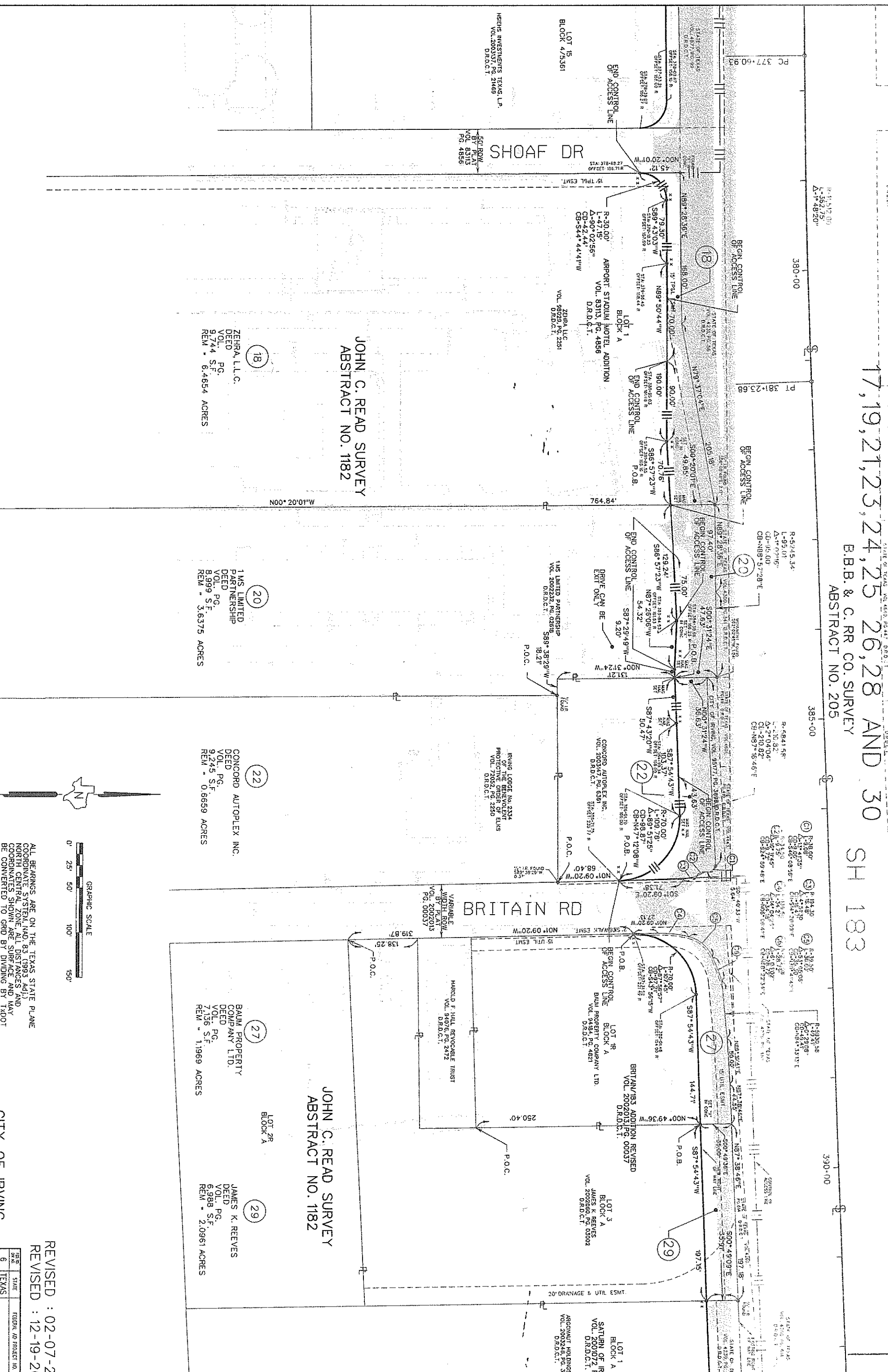
385.00

R-5841.58
L-210.82
A-2°04'04"
CL-210.82
CB-N87°16'46"E

390.00

R-3320.58
L-30.60
A-0°42'00"
CD-30.60
CB-S87°16'46"E

R-3320.58
L-30.60
A-0°42'00"
CD-30.60
CB-S87°16'46"E



**JOHN C. READ SURVEY
ABSTRACT NO. 1182**

**JOHN C. READ SURVEY
ABSTRACT NO. 1182**

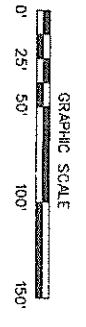
ZEHERA, L.L.C.
DEED
VOL. PG.
5,744 S.F.
REM - 6.4654 ACRES

1MS LIMITED
PARTNERSHIP
DEED
VOL. PG.
8,999 S.F.
REM - 3.6375 ACRES

CONCORD AUTOPLEX INC.
DEED
VOL. PG.
9,245 S.F.
REM - 0.6659 ACRES

BAUM PROPERTY
COMPANY LTD.
DEED
VOL. PG.
7,136 S.F.
REM - 1.1969 ACRES

JAMES K. REEVES
DEED
VOL. PG.
6,988 S.F.
REM - 2.0961 ACRES



ALL BEARINGS ARE ON THE TEXAS STATE PLANE
COORDINATE SYSTEM (NAD 83 (1993 ADJ.)
NORTH CENTRAL ZONE. ALL DISTANCES AND
COORDINATES SHOWN ARE SURFACE AND MAY
BE CONVERTED TO GRID BY DIVIDING BY
CONVERSION FACTOR OF 1.000135506.

CITY OF IRVING

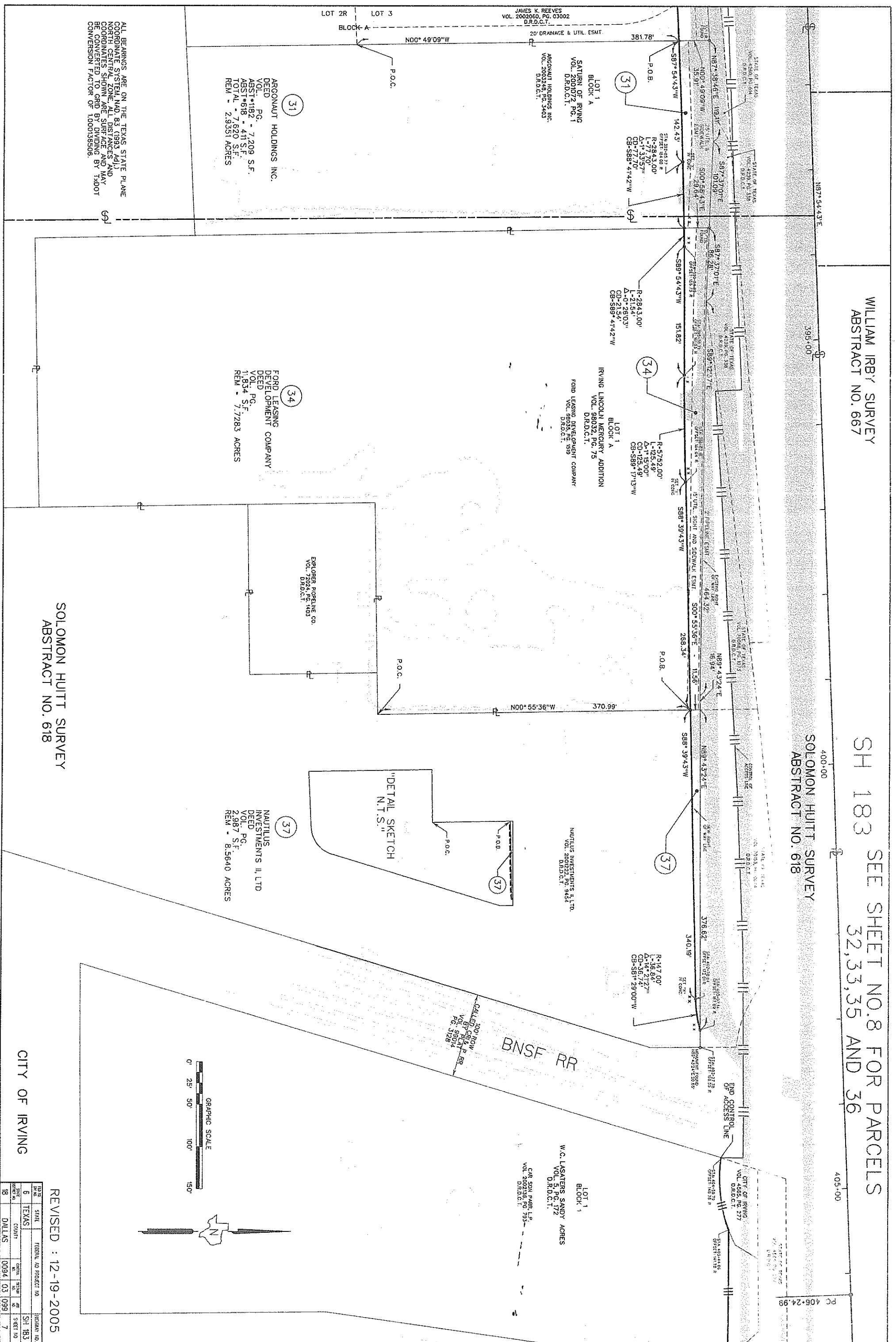
REVISED : 02-07-2006
REVISED : 12-19-2005

STATE	FEDERAL PROJECT NO.	SECTION	SHEET NO.
TEXAS		6	SH 183
DALLAS	0094	03	099

WILLIAM IRBY SURVEY
ABSTRACT NO. 667

SH 183 SEE SHEET NO. 8 FOR PARCELS
32, 33, 35 AND 36

SOLOMON HUITT SURVEY
ABSTRACT NO. 618



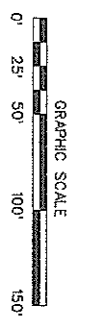
ALL BEARINGS ARE ON THE TEXAS STATE PLANE
COORDINATE SYSTEM AND 83 (1983 ADJ.)
COORDINATES SHOWN ARE SURFACE AND MAY
BE CONVERTED TO GRID BY DIVIDING BY
CONVERSION FACTOR OF 1.000136506.

ARGONAUT HOLDINGS INC.
DEED
VOL. PG.
ABST. #182 - 7,209 S.F.
ABST. #618 - 411 S.F.
TOTAL - 7,620 S.F.
REM - 2,9331 ACRES

FORD LEASING DEVELOPMENT COMPANY
DEED
VOL. PG.
1,834 S.F.
REM - 7,7283 ACRES

NAUTILUS INVESTMENTS II, LTD
DEED PG.
VOL. PG.
2,987 S.F.
REM - 8,5640 ACRES

SOLOMON HUITT SURVEY
ABSTRACT NO. 618



REVISED : 12-19-2005

DATE	STATE	FEDERAL ID PROJECT NO.	IRVING ID
6	TEXAS		SH 183
18	DALLAS	0094 03 1099	7