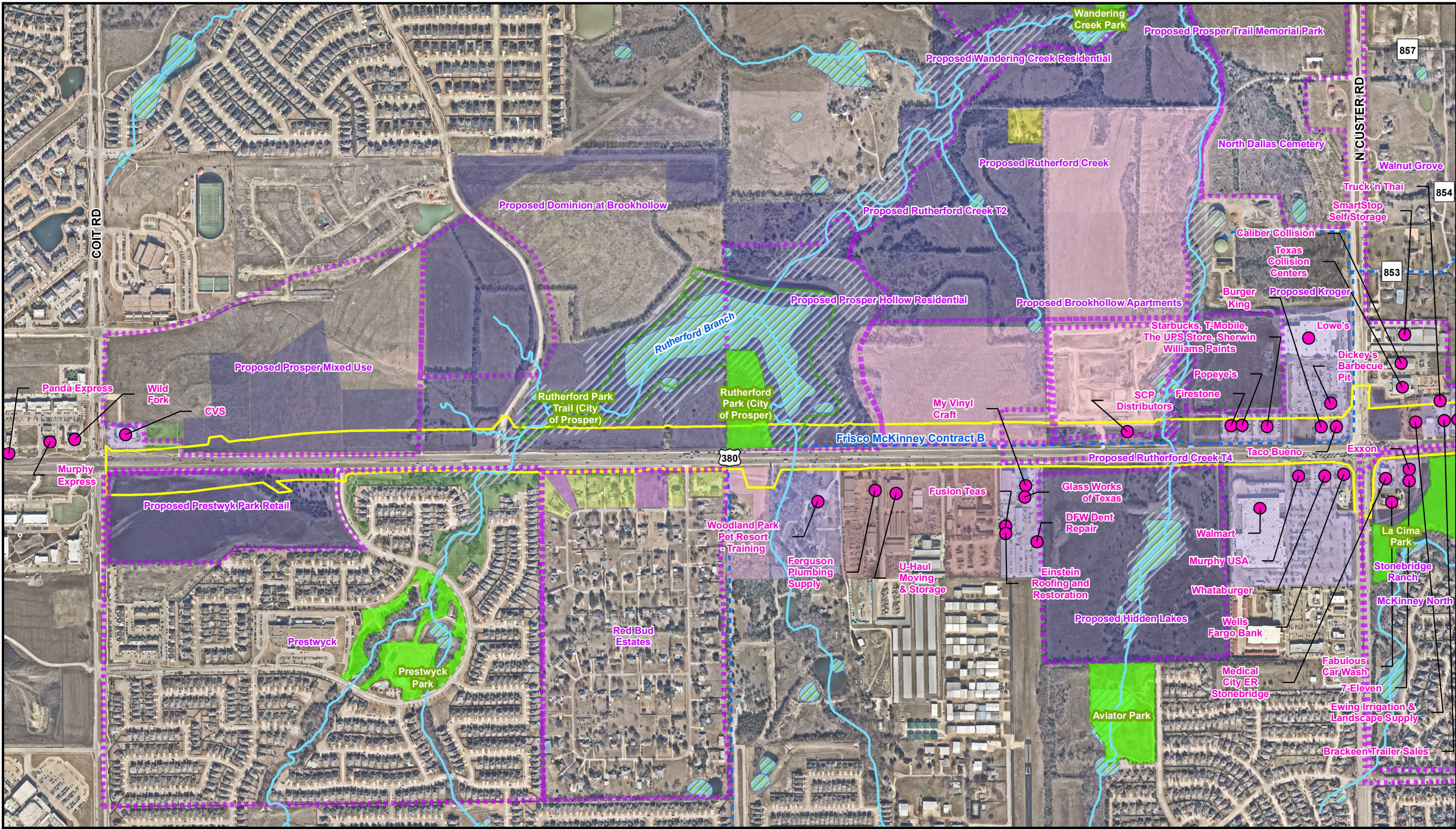
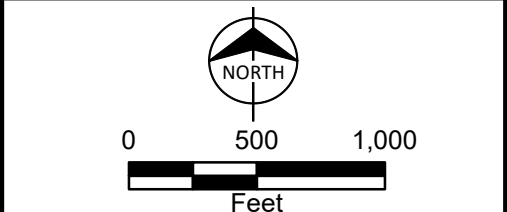
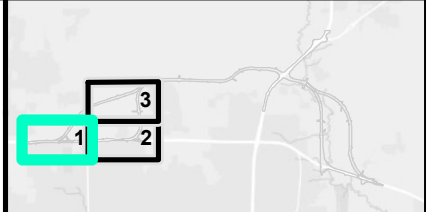


**APPENDIX D: Segment Resource Maps and
Potential Displacements Maps**

Path: C:\Users\spurgeon\OneDrive - Burns & McDonnell\Desktop\Projects\US 380\MapDocs\US 380\US 380 DEIS\Resource_Specific_SegA.mxd spurgeon 5/16/2023
 Service Layer Credits: Esri, HERE, Garmin, (c) OpenStreetMap contributors, and the GIS user community

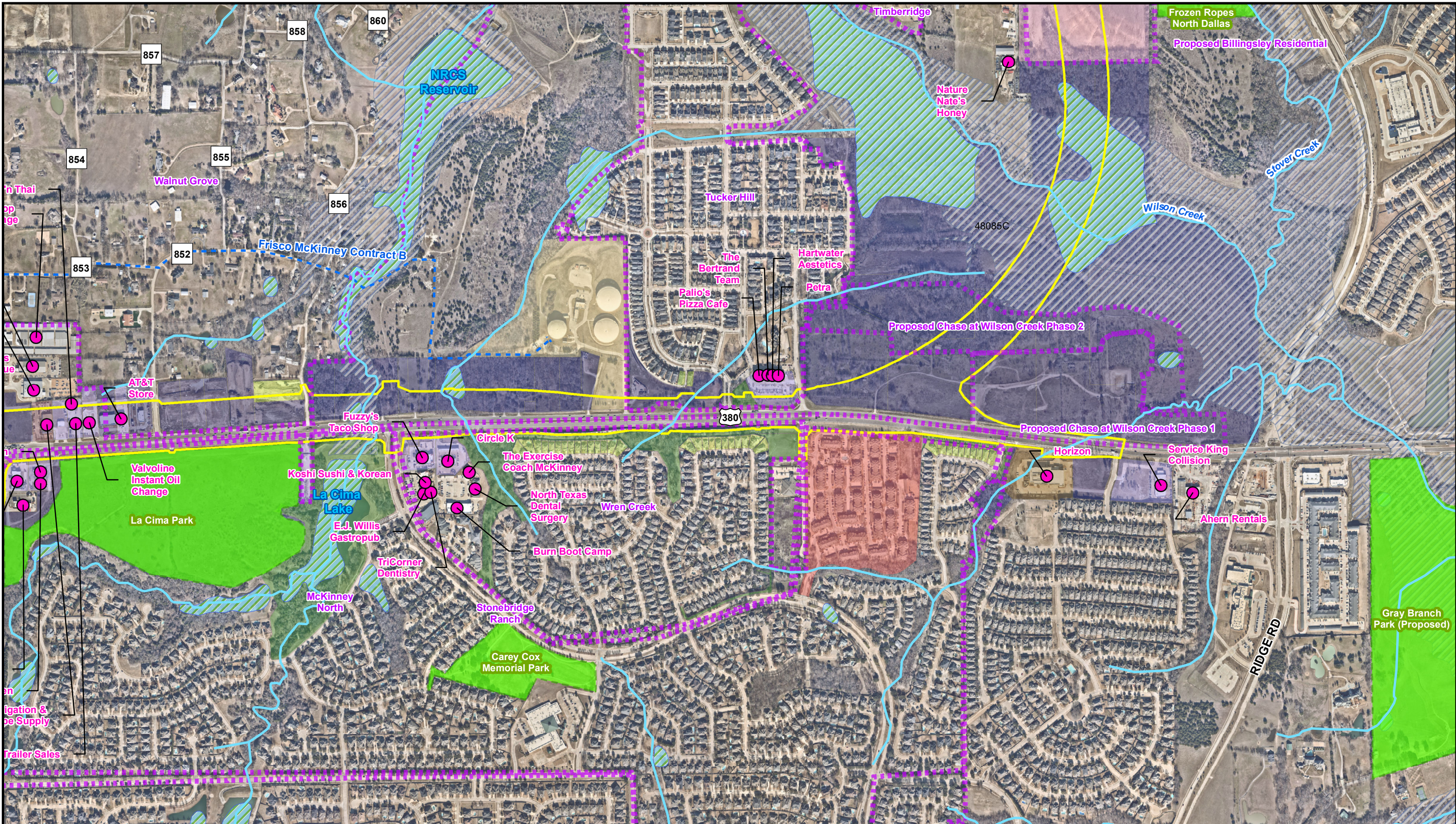


Segment A Proposed ROW (Purple/Blue Alternatives)	Residential - Rural Single-Family	Wetlands (NWI)
Agriculture	Residential - Single-Family	FEMA Floodway and Floodplains
Commercial	Residential - Vacant	Major Waterlines
Industrial	Undeveloped/Vacant	Businesses
Private Open Space	Developments	
	Parkland	

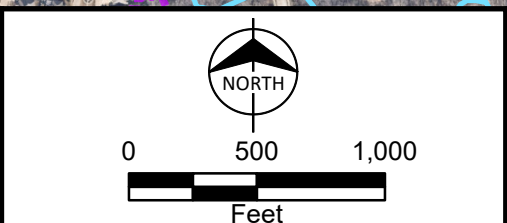
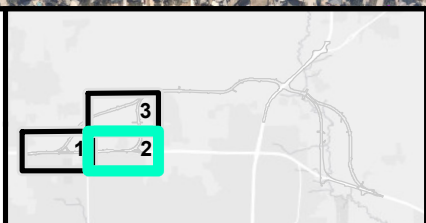


Resource Map
 Segment A (Purple/Blue Alternatives)
 US 380 McKinney
 Coit Road to FM 1827
 Collin County, TX
 Map 1 of 3

Path: C:\Users\spurgeon\OneDrive - Burns & McDonnell\Desktop\Projects\US 380\DataFiles\ArcDocs\US 380\US 380 DEIS\Resource_Specific_SegA.mxd spurgeon 5/16/2023
 Service Layer Credits: Esri, HERE, Garmin, (c) OpenStreetMap contributors, and the GIS user community

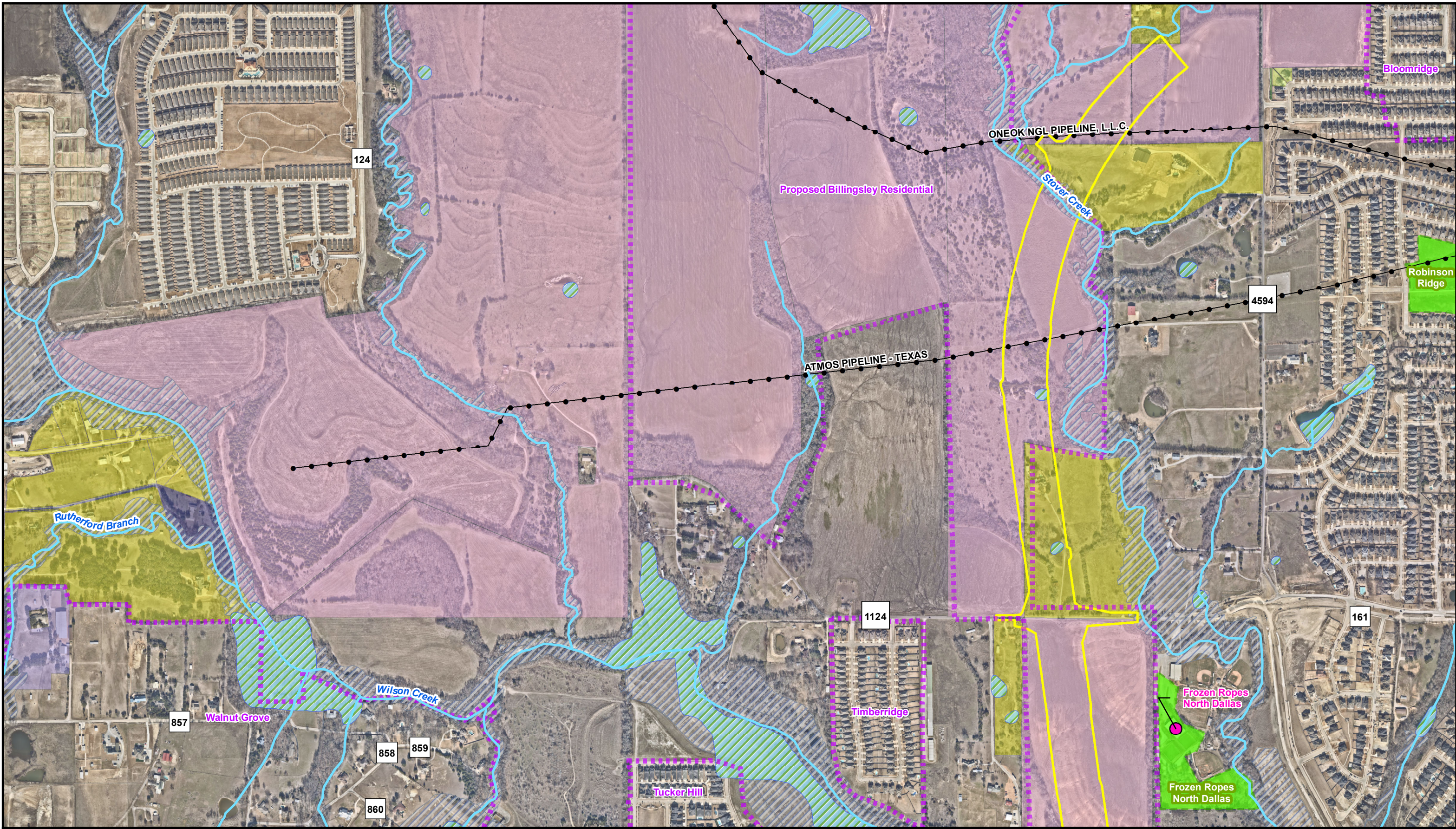


Segment A Proposed ROW (Purple/Blue Alternatives)	Private Open Space	Wetlands (NWI)
Agriculture	Residential - Multifamily	FEMA Floodway and Floodplains
Commercial	Residential - Single-Family	Major Waterlines
Industrial	Undeveloped/Vacant	Businesses
Institutional	Utility/Infrastructure	
Developments	Parkland	

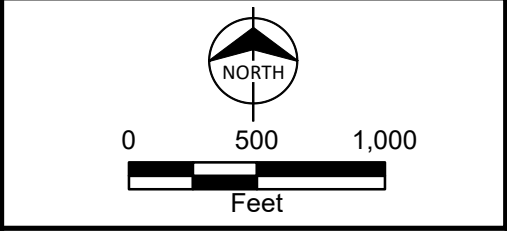
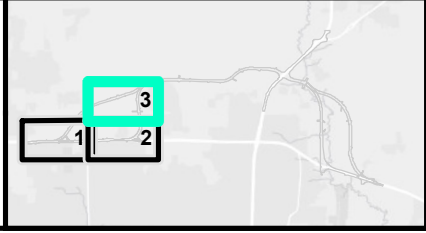


Resource Map
 Segment A (Purple/Blue Alternatives)
 US 380 McKinney
 Coit Road to FM 1827
 Collin County, TX
 Map 2 of 3

Path: C:\Users\sspurgeon\OneDrive - Burns & McDonnell\Desktop\Projects\US 380\DataFiles\ArcDocs\US 380\US 380 DEIS\Resource_Specific_SegA.mxd sspurgeon 5/16/2023
 Service Layer Credits: Esri, HERE, Garmin, (c) OpenStreetMap contributors, and the GIS user community

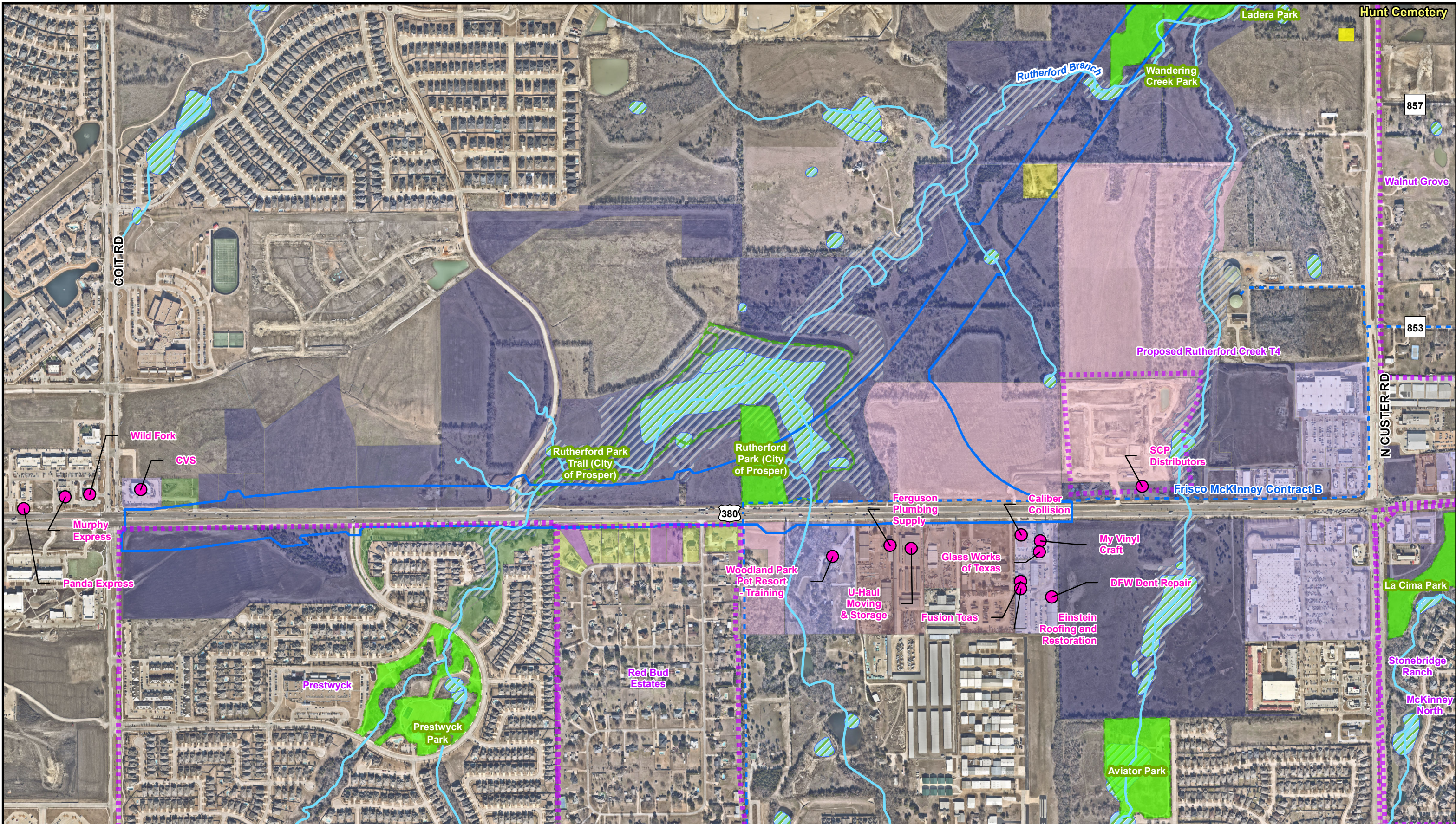


Segment A Proposed ROW (Purple/Blue Alternatives)	Residential - Rural Single-Family	Wetlands (NWI)
Agriculture	Residential - Single-Family	FEMA Floodway and Floodplains
Commercial	Undeveloped/Vacant	Pipelines
Private Open Space	Developments	Businesses
	Parkland	

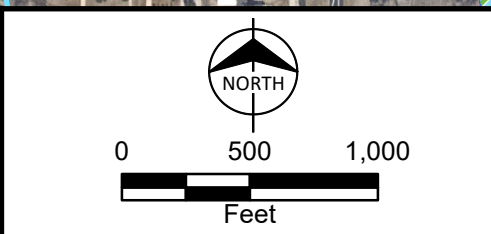
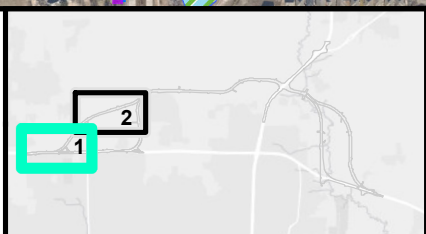


Resource Map
 Segment A (Purple/Blue Alternatives)
 US 380 McKinney
 Coit Road to FM 1827
 Collin County, TX
 Map 3 of 3

Path: C:\Users\spurgeon\OneDrive - Burns & McDonnell\Desktop\Projects\US 380\MapDocs\US 380\US 380 DEIS\Resource_Specific_SegB.mxd spurgeon 5/16/2023
 Service Layer Credits: Esri, HERE, Garmin, (c) OpenStreetMap contributors, and the GIS user community

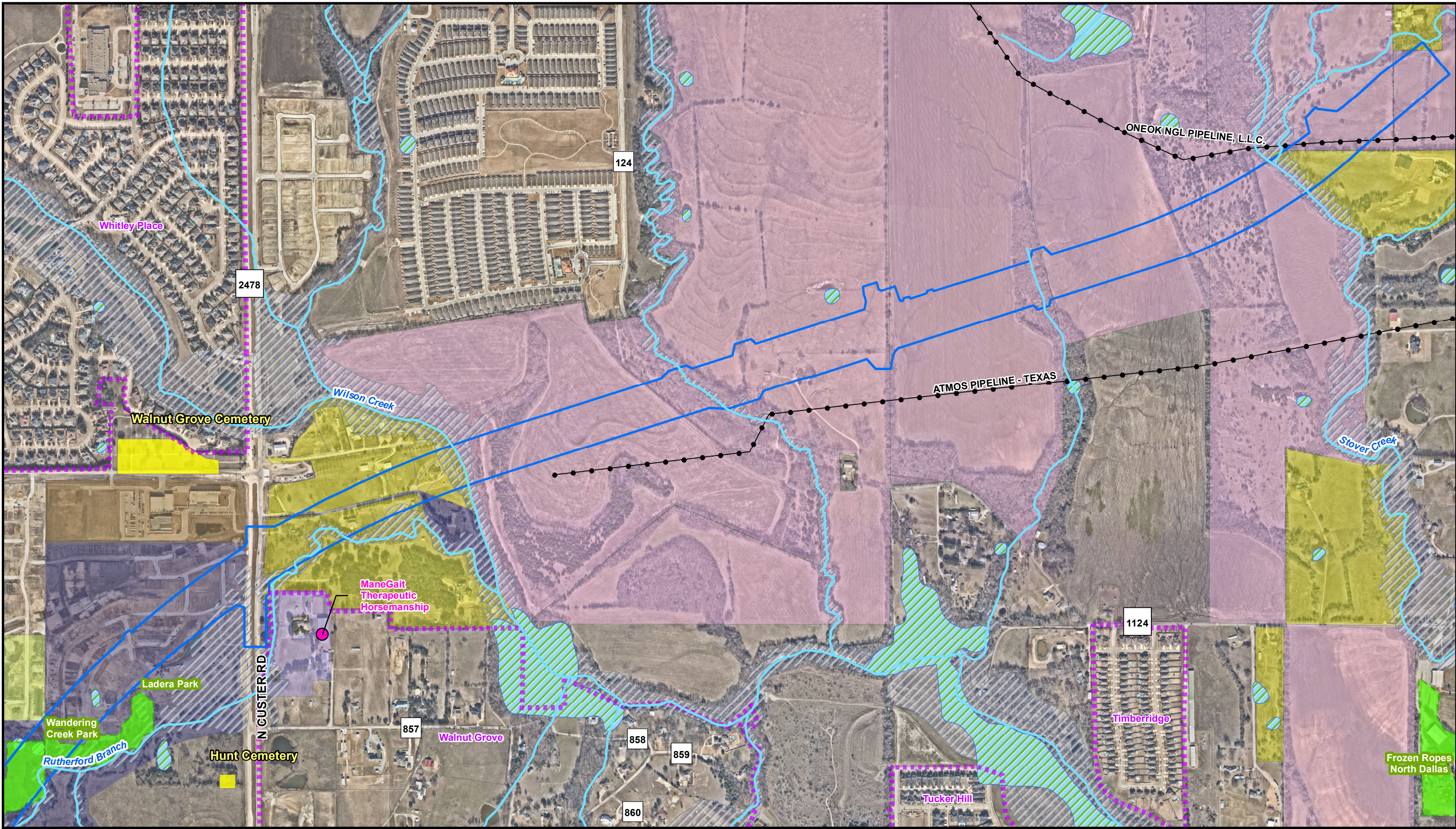


- | | | |
|--------------|-----------------------------------|-------------------------------|
| Segment B | Private Open Space | Wetlands (NWI) |
| Developments | Residential - Rural Single-Family | FEMA Floodway and Floodplains |
| Agriculture | Residential - Single-Family | Major Waterlines |
| Commercial | Residential - Vacant | Businesses |
| Industrial | Undeveloped/Vacant | |
| | Cemeteries | |
| | Parkland | |

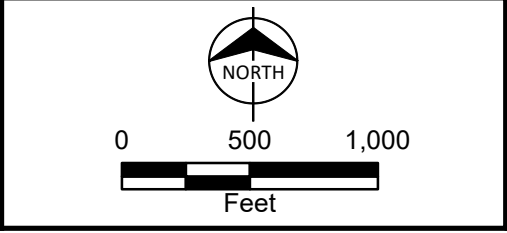
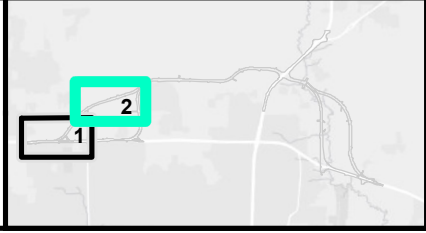


Resource Map
 Segment B (Brown/Gold Alternatives)
 US 380 McKinney
 Coit Road to FM 1827
 Collin County, TX
 Map 1 of 2

Path: C:\Users\spurgueon\OneDrive - Burns & McDonnell\Desktop\Projects\US 380\DataFiles\ArcDocs\US 380\US 380 DEIS\Resource_Specific_SegB.mxd spurgueon 5/16/2023
 Service Layer Credits: Esri, HERE, Garmin, (c) OpenStreetMap contributors, and the GIS user community

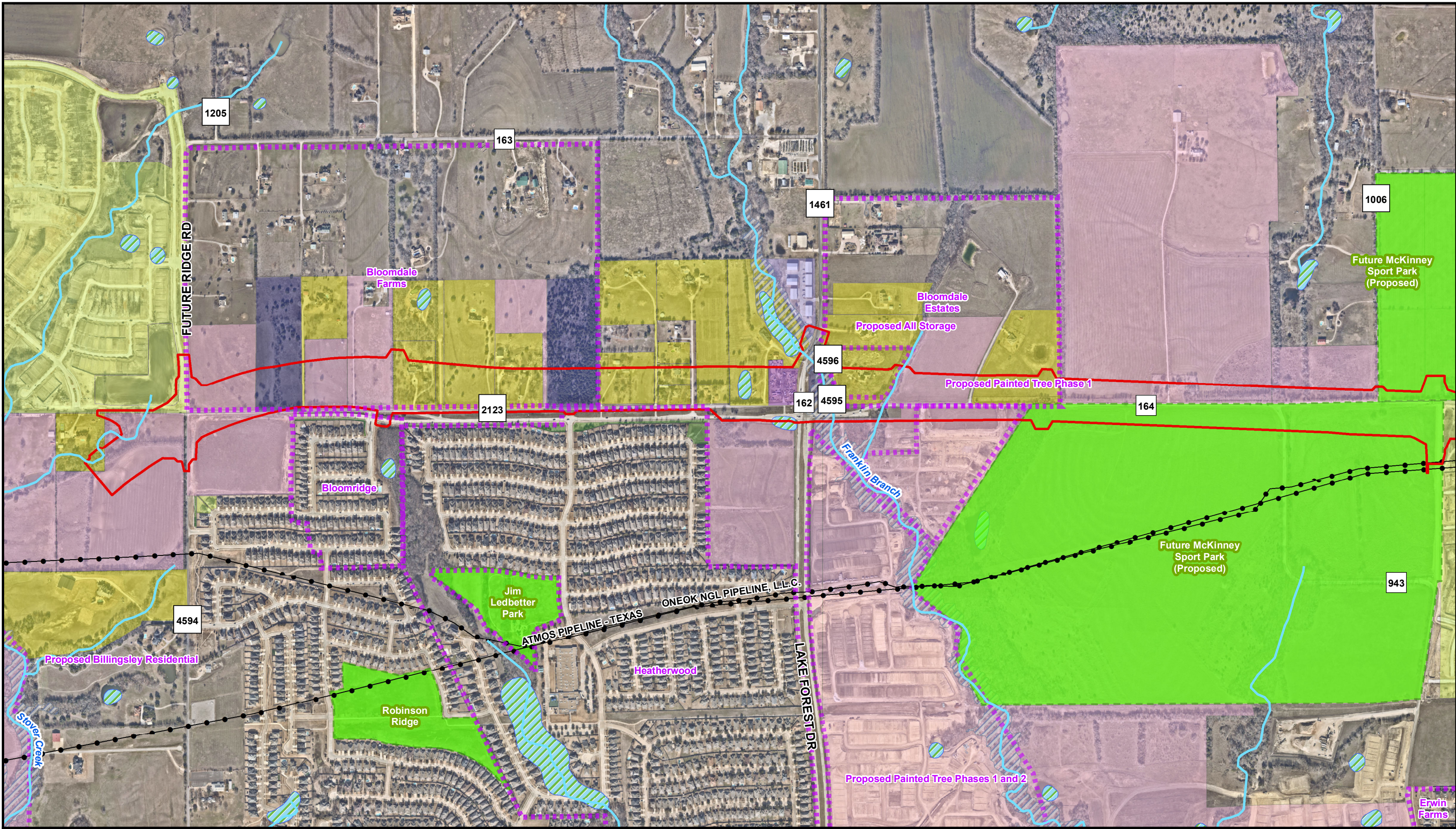


- | | | |
|--------------|-----------------------------------|-------------------------------|
| Segment B | Institutional | Wetlands (NWI) |
| Developments | Residential - Rural Single-Family | FEMA Floodway and Floodplains |
| Agriculture | Residential - Single-Family | Pipelines |
| Commercial | Undeveloped/Vacant | Businesses |
| | Cemeteries | |
| | Parkland | |

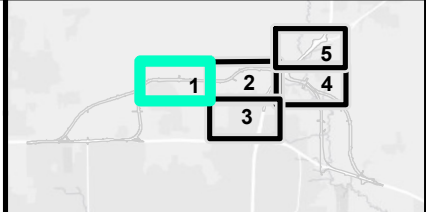


Resource Map
 Segment B (Brown/Gold Alternatives)
 US 380 McKinney
 Coit Road to FM 1827
 Collin County, TX
 Map 2 of 2

Path: C:\Users\sspurgeon\OneDrive - Burns & McDonnell\Desktop\Projects\US 380\Map\Map\ArcDocs\US 380\US 380 DEIS\Resource_Specific_SegE.mxd sspurgeon 5/16/2023
 Service Layer Credits: Esri, HERE, Garmin, (c) OpenStreetMap contributors, and the GIS user community



Segment E Proposed ROW (All Alternatives)	Residential - Rural Single-Family	Wetlands (NW1)
Developments	Residential - Single-Family	FEMA Floodway and Floodplains
Agriculture	Residential - Vacant	Parkland
Commercial	Undeveloped/Vacant	Pipelines
Private Open Space		



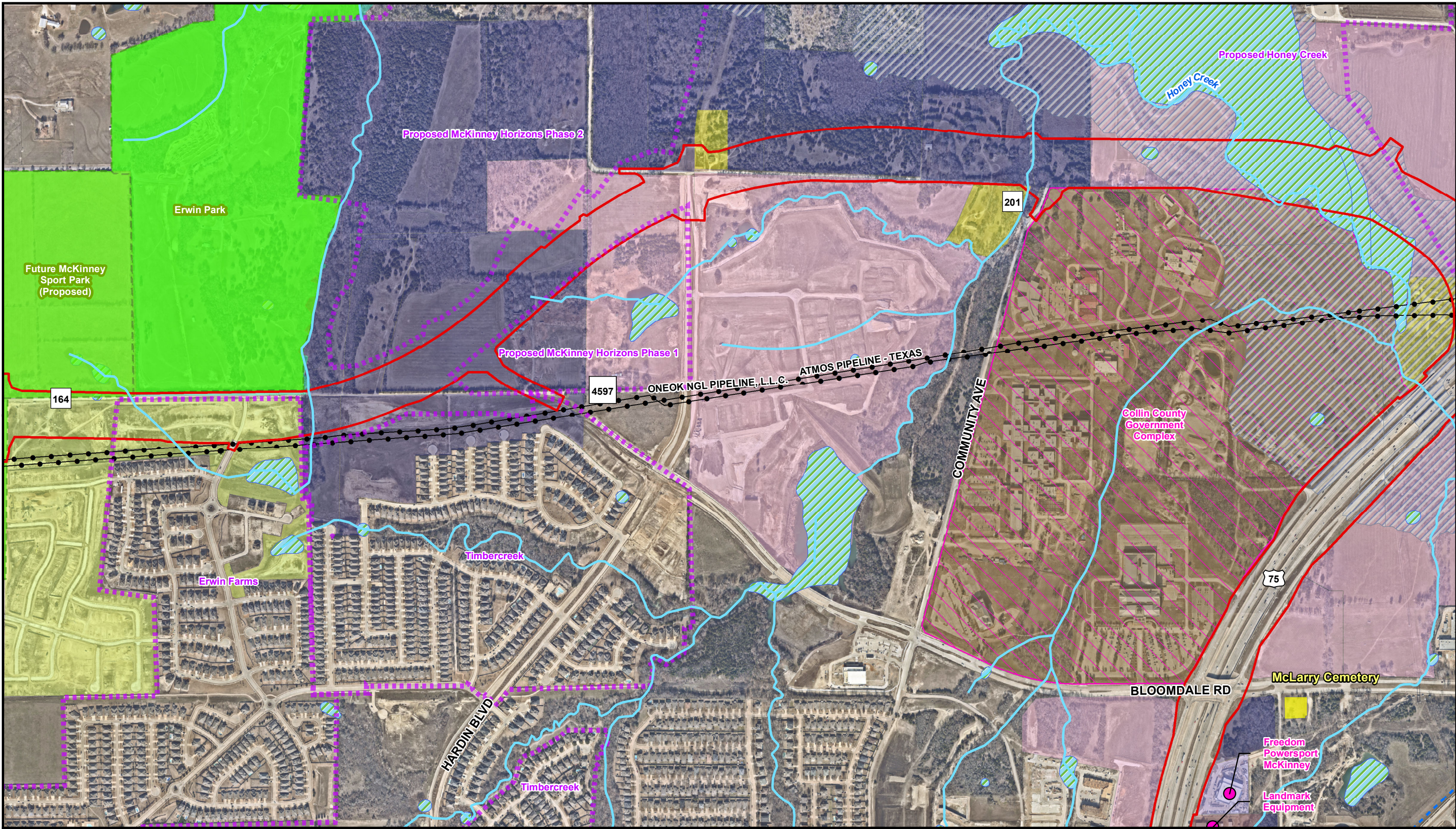
NORTH

0 500 1,000
Feet

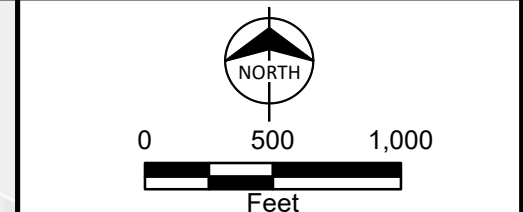
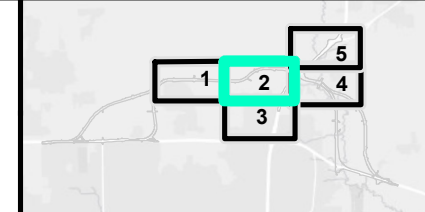


Resource Map
 Segment E (All Alternatives)
 US 380 McKinney
 Coit Road to FM 1827
 Collin County, TX
 Map 1 of 5

Path: C:\Users\sspurgeon\OneDrive - Burns & McDonnell\Desktop\Projects\US 380\DataFiles\ArcDocs\US 380\US 380 DEIS\Resource_Specific_SegE.mxd sspurgeon 5/16/2023
 Service Layer Credits: Esri, HERE, Garmin, (c) OpenStreetMap contributors, and the GIS user community

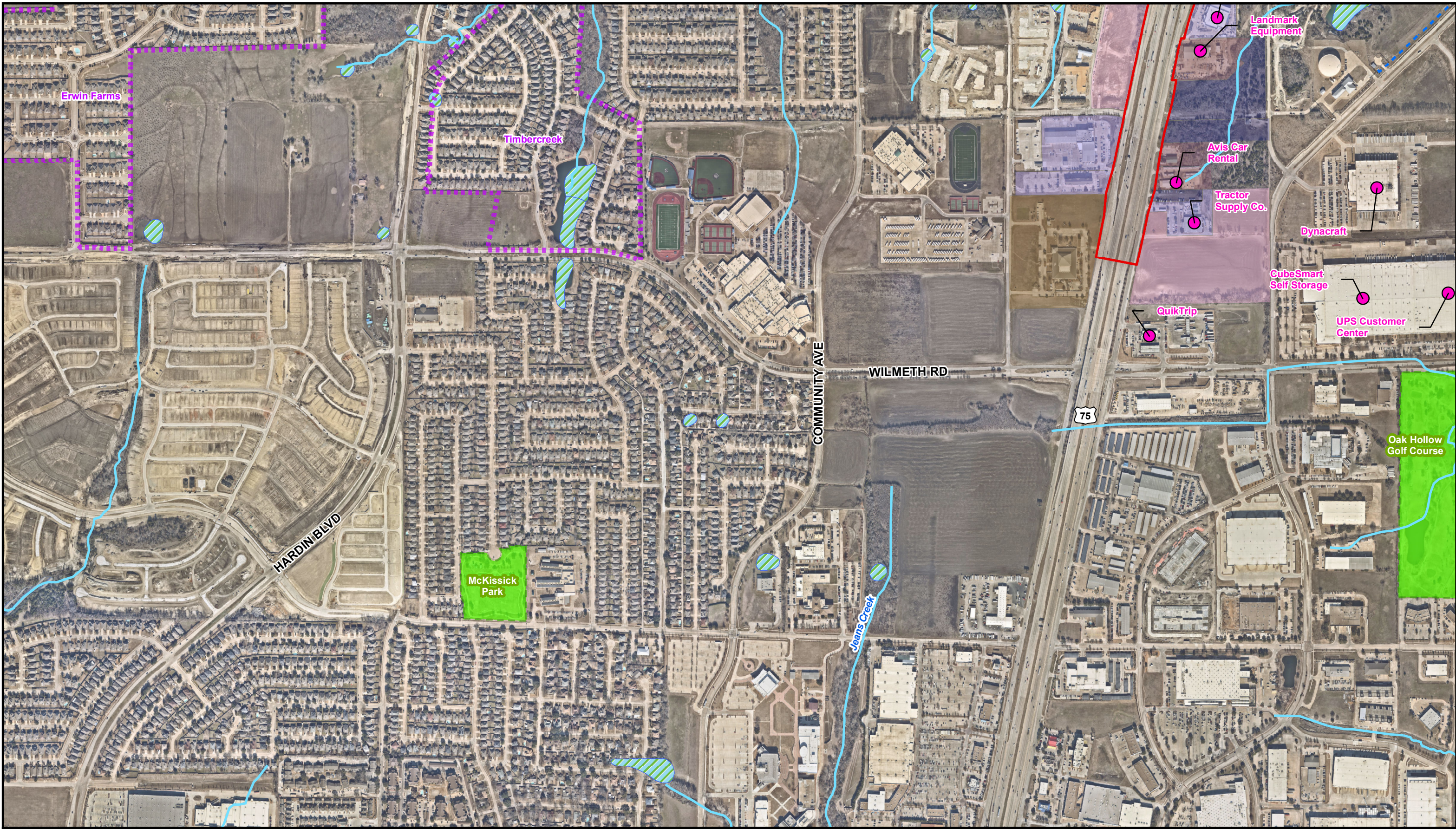


Segment E Proposed ROW (All Alternatives)	Institutional	Wetlands (NW1)
Developments	FEMA Floodway and Floodplains	Parkland
Collin County Government Complex	Residential - Rural Single-Family	Pipelines
Agriculture	Residential - Single-Family	Major Waterlines
Commercial	Undeveloped/Vacant	Businesses
Industrial	Cemeteries	

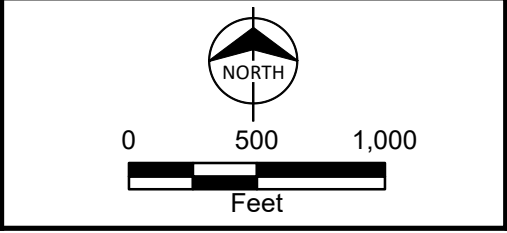
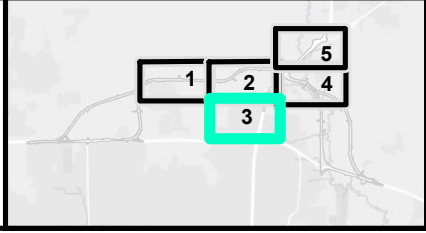


Resource Map
 Segment E (All Alternatives)
 US 380 McKinney
 Coit Road to FM 1827
 Collin County, TX
 Map 2 of 5

Path: C:\Users\spurgeon\OneDrive - Burns & McDonnell\Desktop\Projects\US 380\DataFiles\ArcDocs\US 380\US 380 DEIS\Resource_Specific_SegE.mxd sspurgeon 5/16/2023
 Service Layer Credits: Esri, HERE, Garmin, (c) OpenStreetMap contributors, and the GIS user community

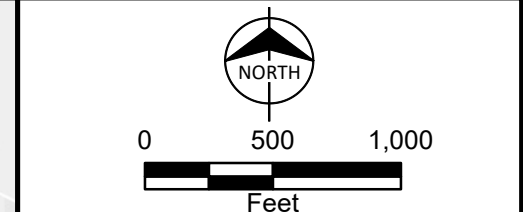
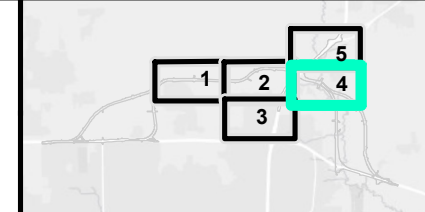
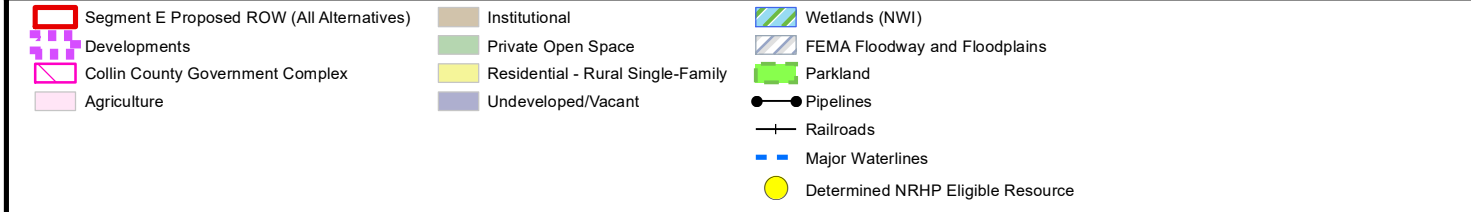
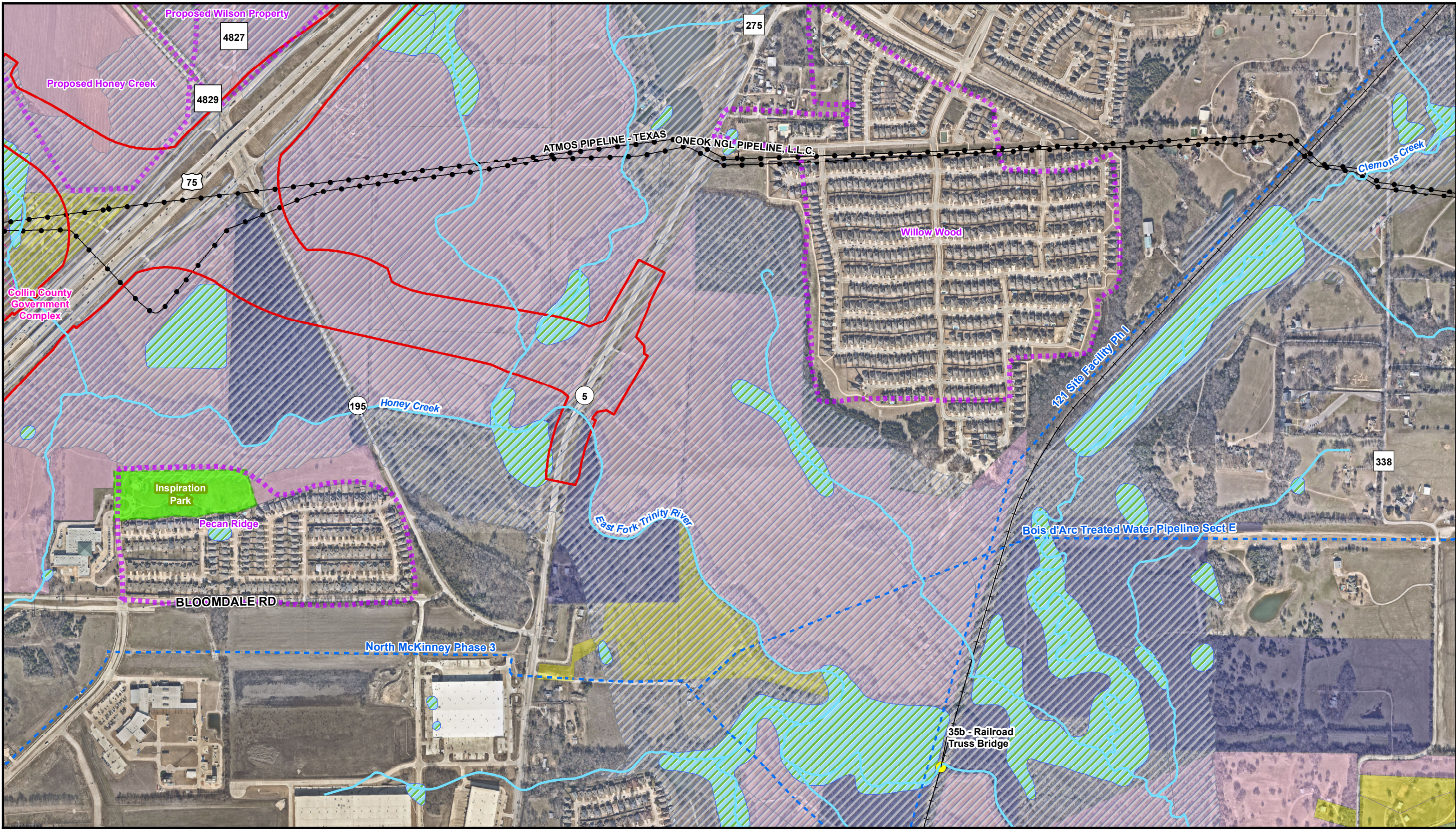


Segment E Proposed ROW (All Alternatives)	Industrial	Wetlands (NWI)
Developments	Institutional	FEMA Floodway and Floodplains
Agriculture	Undeveloped/Vacant	Parkland
Commercial		Major Waterlines
		Businesses



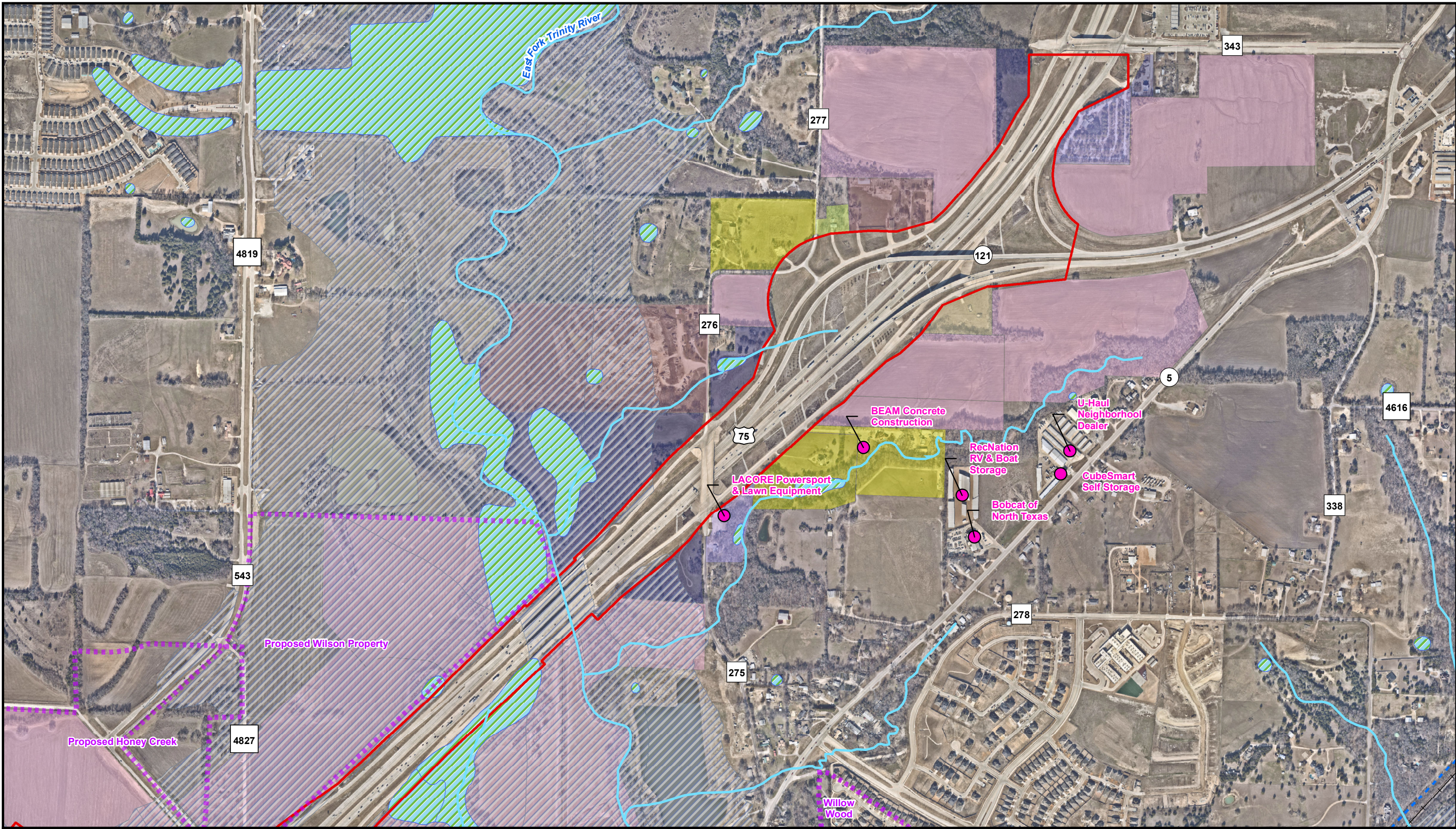
Resource Map
 Segment E (All Alternatives)
 US 380 McKinney
 Coit Road to FM 1827
 Collin County, TX
 Map 3 of 5

Path: C:\Users\sspurgeon\OneDrive - Burns & McDonnell\Desktop\Projects\US 380\DataFiles\ArcDocs\US 380\US 380 DEIS\Resource_Specific_SegE.mxd sspurgeon 5/16/2023
 Service Layer Credits: Esri, HERE, Garmin, (c) OpenStreetMap contributors, and the GIS user community

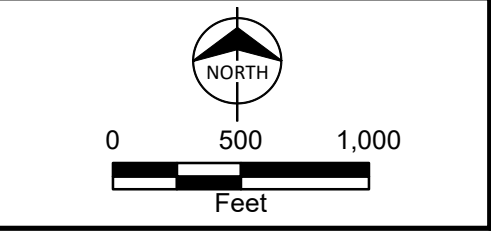
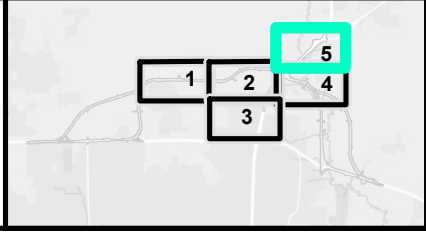


Resource Map S
 Segment E (All Alternatives)
 US 380 McKinney
 Coit Road to FM 1827
 Collin County, TX
 Map 4 of 5

Path: C:\Users\spurgeon\OneDrive - Burns & McDonnell\Desktop\Projects\US 380\DataFiles\ArcDocs\US 380\US 380 DEIS\Resource_Specific_SegE.mxd spurgeon 5/16/2023
 Service Layer Credits: Esri, HERE, Garmin, (c) OpenStreetMap contributors, and the GIS user community

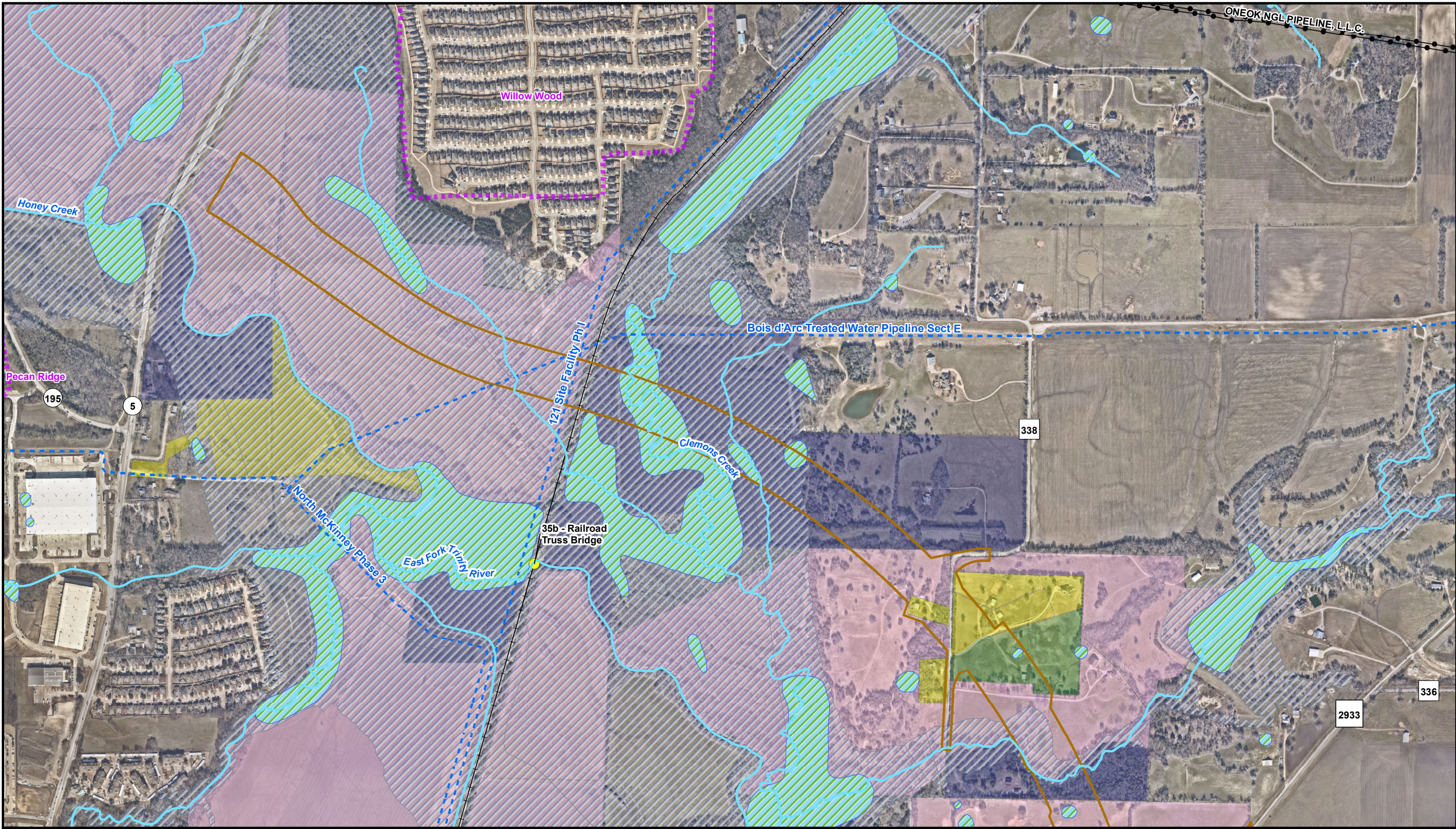


Segment E Proposed ROW (All Alternatives)	Residential - Rural Single-Family	Wetlands (NWI)
Developments	Residential - Single-Family	FEMA Floodway and Floodplains
Agriculture	Undeveloped/Vacant	Railroads
Commercial	Utility/Infrastructure	Major Waterlines
Industrial		Businesses

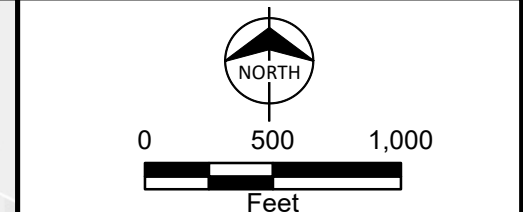


Resource Map
 Segment E (All Alternatives)
 US 380 McKinney
 Coit Road to FM 1827
 Collin County, TX
 Map 5 of 5

Path: C:\Users\spurgeon\OneDrive - Burns & McDonnell\Desktop\Projects\US 380\DataFiles\ArcDocs\US 380\US 380 DEIS\Resource_Specific_SegC.mxd sspurgeon 5/16/2023
Service Layer Credits: Esri, HERE, Garmin, (c) OpenStreetMap contributors, and the GIS user community

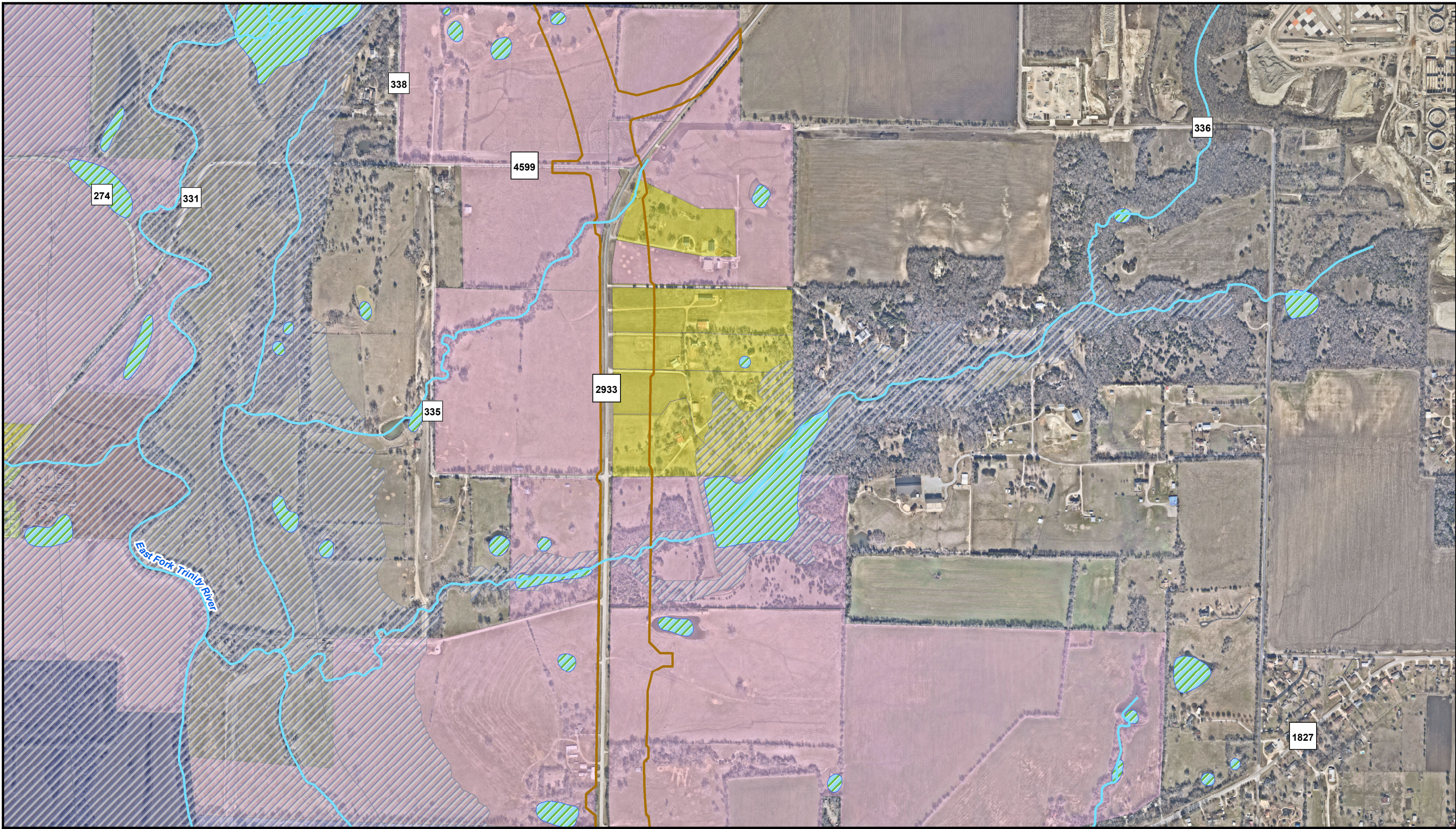


Segment C Proposed ROW W/Spur (Blue/Brown Alternatives)	Private Open Space	Pipelines
Developments	Residential - Rural Single-Family	Major Waterlines
Agriculture	Undeveloped/Vacant	Determined NRHP Eligible Resource
Railroads	Wetlands (NWI)	
FEMA Floodway and Floodplains		

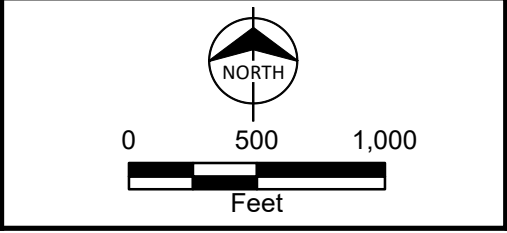


Resource Map
Segment C (Blue/Brown Alternatives)
US 380 McKinney
Coit Road to FM 1827
Collin County, TX
Map 1 of 3

Path: C:\Users\sspurgeon\OneDrive - Burns & McDonnell\Desktop\Projects\US 380\DataFiles\ArcDocs\US 380\US 380 DEIS\Resource_Specific_SegC.mxd sspurgeon 5/16/2023
Service Layer Credits: Esri, HERE, Garmin, (c) OpenStreetMap contributors, and the GIS user community

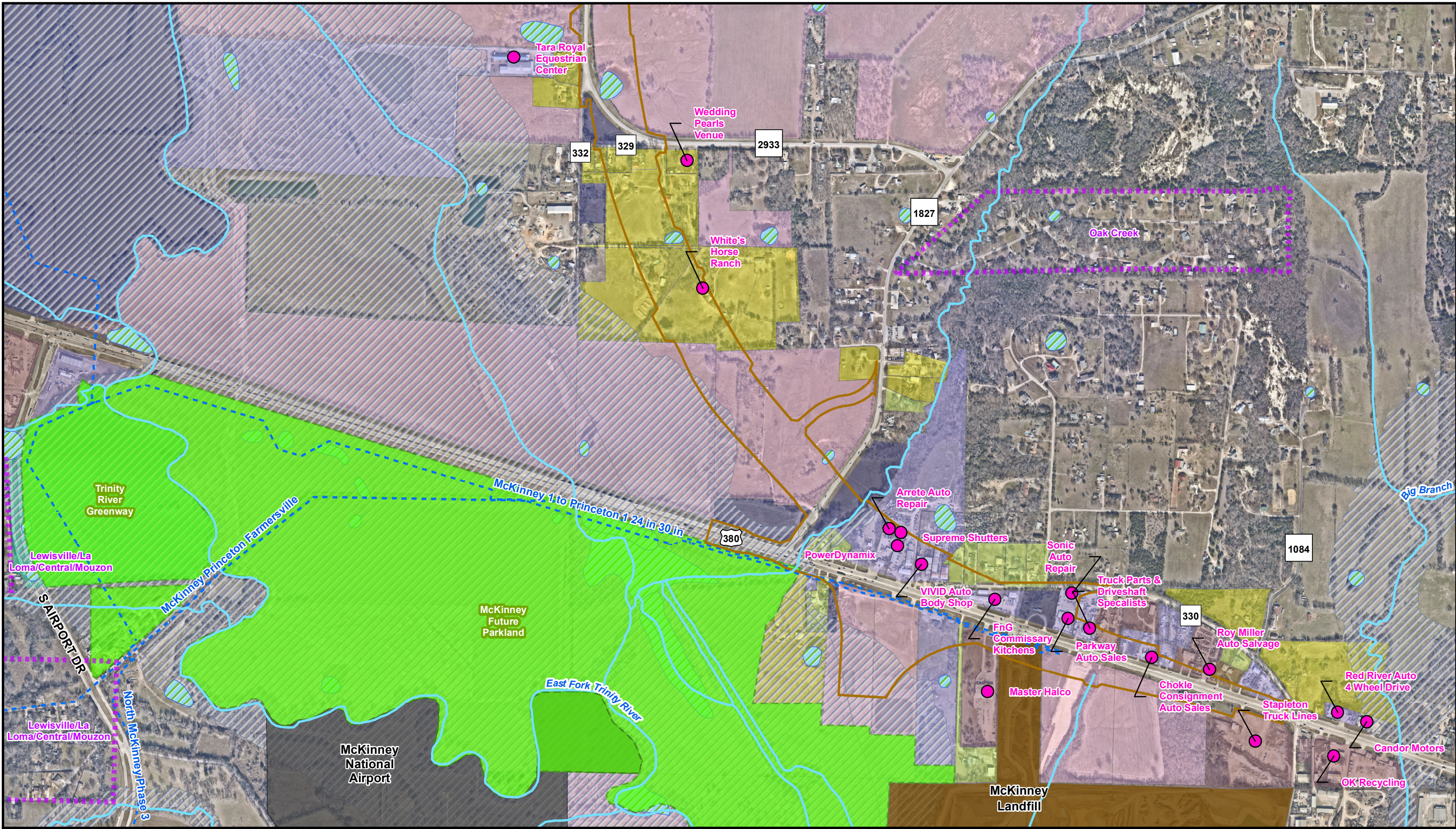


- | | |
|---|-----------------------------------|
| Segment C Proposed ROW W/Spur (Blue/Brown Alternatives) | Residential - Rural Single-Family |
| Agriculture | Residential - Single-Family |
| Commercial | Undeveloped/Vacant |
| Industrial | Wetlands (NWI) |
| | FEMA Floodway and Floodplains |

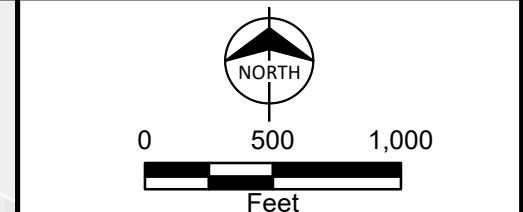


Resource Map
Segment C (Blue/Brown Alternatives)
US 380 McKinney
Coit Road to FM 1827
Collin County, TX
Map 2 of 3

Path: C:\Users\sspurgeon\OneDrive - Burns & McDonnell\Desktop\Projects\US 380\MapDocs\US 380\US 380 DEIS\Resource_Specific_SegC.mxd sspurgeon 5/16/2023
 Service Layer Credits: Esri, HERE, Garmin, (c) OpenStreetMap contributors, and the GIS user community

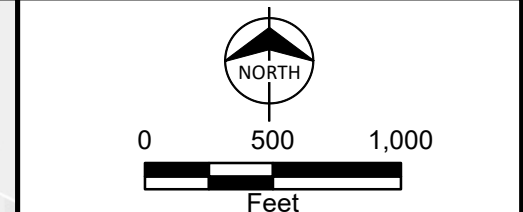
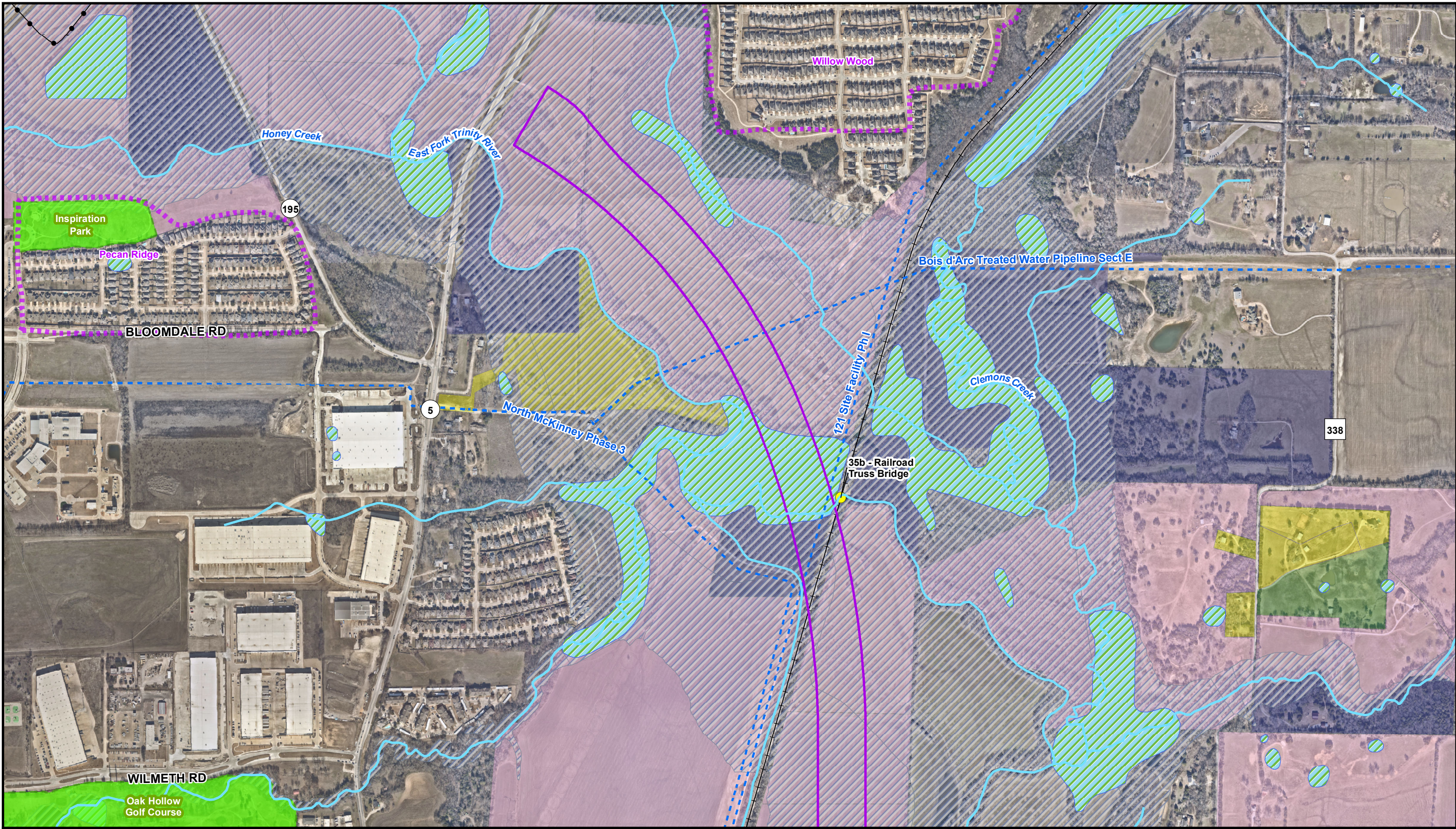


Segment C Proposed ROW W/Spur (Blue/Brown Alternatives)	Other Park Lands and Open Space	McKinney National Airport Property
Developments	Residential - Rural Single-Family	Wetlands (NWI)
Agriculture	Residential - Single-Family	FEMA Floodway and Floodplains
Commercial	Residential - Vacant	Major Waterlines
Industrial	Undeveloped/Vacant	Businesses
Institutional	Parkland	
	Landfill	



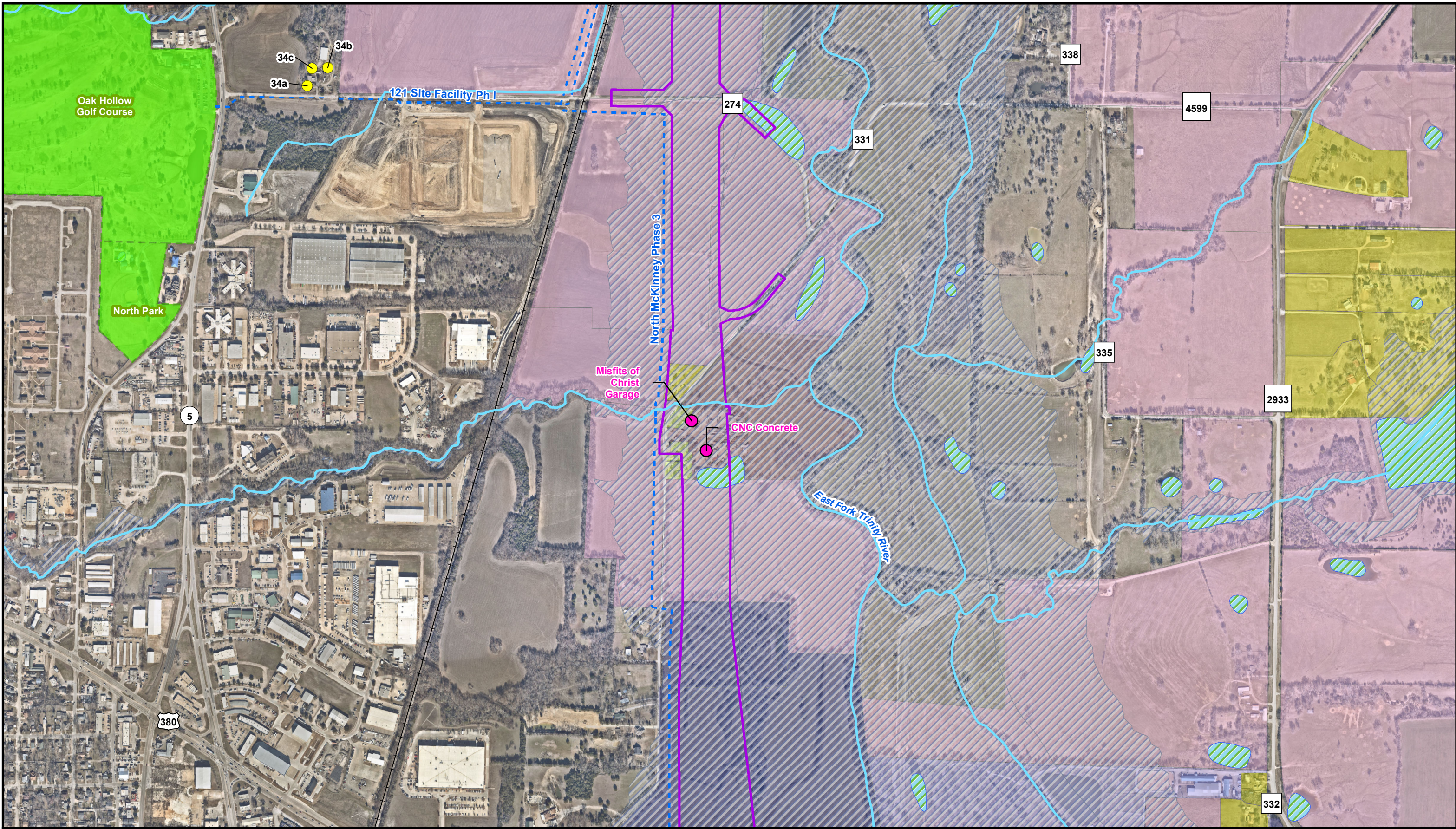
Resource Map
 Segment C (Blue/Brown Alternatives)
 US 380 McKinney
 Coit Road to FM 1827
 Collin County, TX
 Map 3 of 3

Path: C:\Users\sspurgeon\OneDrive - Burns & McDonnell\Desktop\Projects\US 380\DataFiles\ArcDocs\US 380\US 380 DEIS\Resource_Specific_SegD.mxd sspurgeon 5/16/2023
 Service Layer Credits: Esri, HERE, Garmin, (c) OpenStreetMap contributors, and the GIS user community

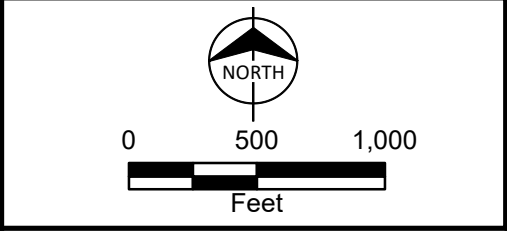
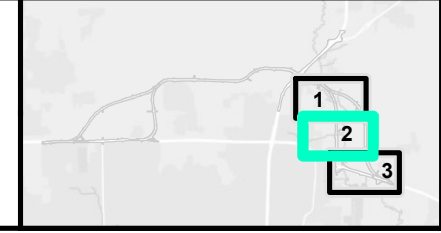


Resource Map
 Segment D (Purple/Gold Alternatives)
 US 380 McKinney
 Coit Road to FM 1827
 Collin County, TX
 Map 1 of 3

Path: C:\Users\spurgeon\OneDrive - Burns & McDonnell\Desktop\Projects\US 380\DataFiles\ArcDocs\US 380\US 380 DEIS\Resource_Specific_SegD.mxd spurgeon 5/16/2023
 Service Layer Credits: Esri, HERE, Garmin, (c) OpenStreetMap contributors, and the GIS user community

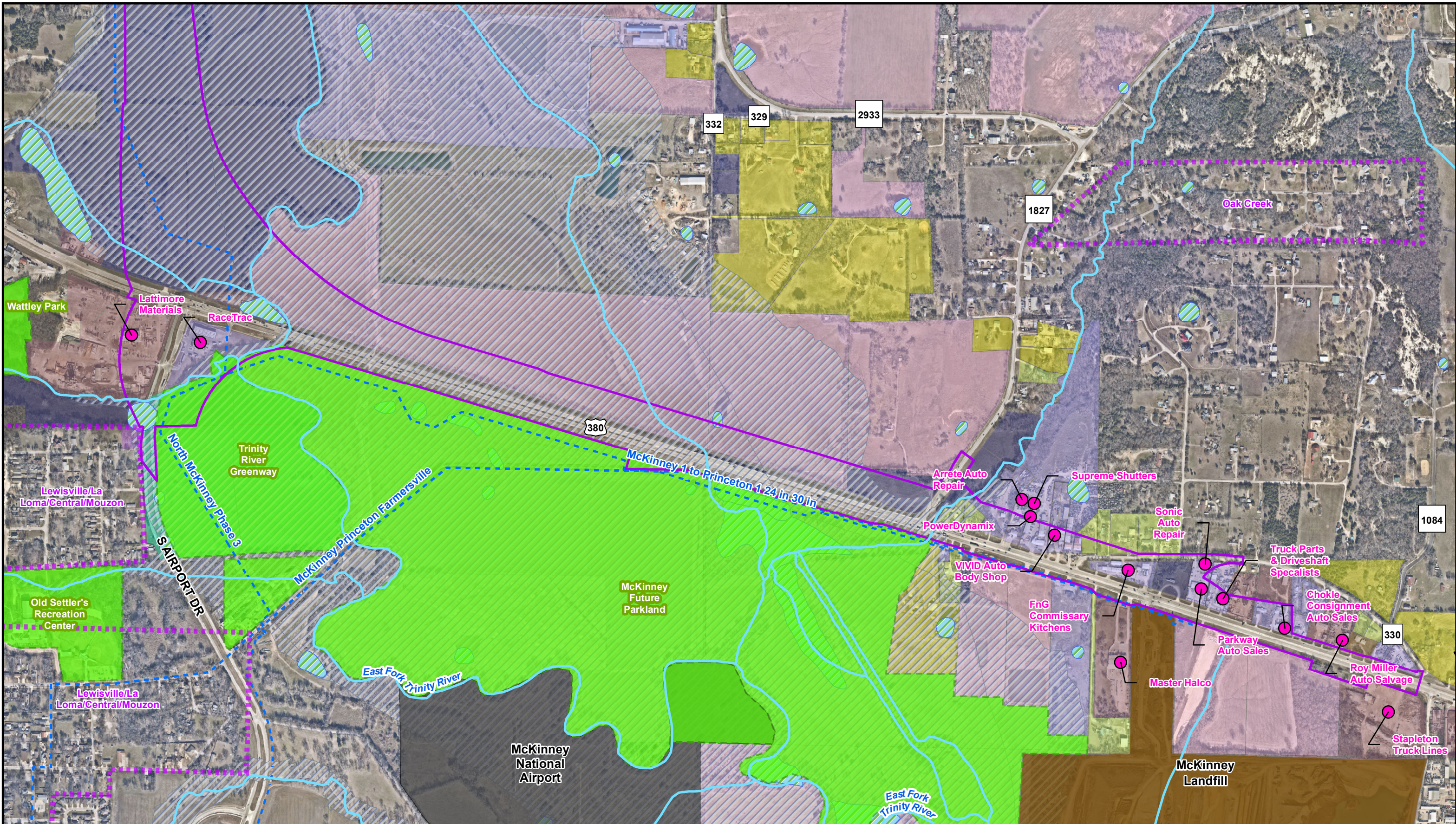


Segment D Proposed ROW W/Spur (Purple/Gold Alternatives)	Residential - Rural Single-Family	Wetlands (NWI)
Agriculture	Residential - Single-Family	FEMA Floodway and Floodplains
Commercial	Undeveloped/Vacant	Railroads
Industrial	Parkland	Major Waterlines
		Determined NRHP Eligible Resource
		Businesses

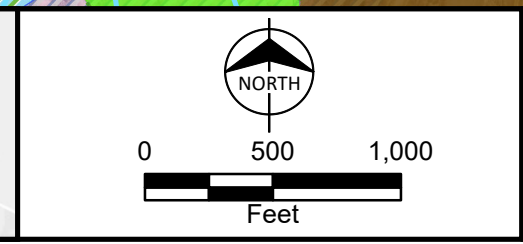
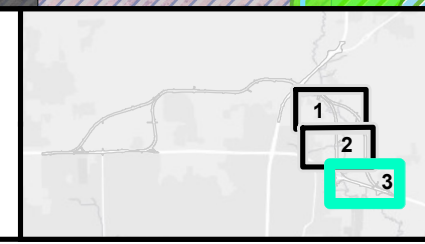


Resource Map
 Segment D (Purple/Gold Alternatives)
 US 380 McKinney
 Coit Road to FM 1827
 Collin County, TX
 Map 2 of 3

Path: C:\Users\sspurgeon\OneDrive - Burns & McDonnell\Desktop\Projects\US 380\DataFiles\ArcDocs\US 380\US 380 DEIS\Resource_Specific_SegD.mxd sspurgeon 5/16/2023
 Service Layer Credits: Esri, HERE, Garmin, (c) OpenStreetMap contributors, and the GIS user community



Segment D Proposed ROW W/Spur (Purple/Gold Alternatives)	Other Park Lands and Open Space	Wetlands (NWI)
Developments	Residential - Rural Single-Family	FEMA Floodway and Floodplains
Agriculture	Residential - Single-Family	Major Waterlines
Commercial	Residential - Vacant	Businesses
Industrial	Undeveloped/Vacant	
Institutional	Parkland	
	Landfill	
	McKinney National Airport Property	



Resource Map
 Segment D (Purple/Gold Alternatives)
 US 380 McKinney
 Coit Road to FM 1827
 Collin County, TX
 Map 3 of 3