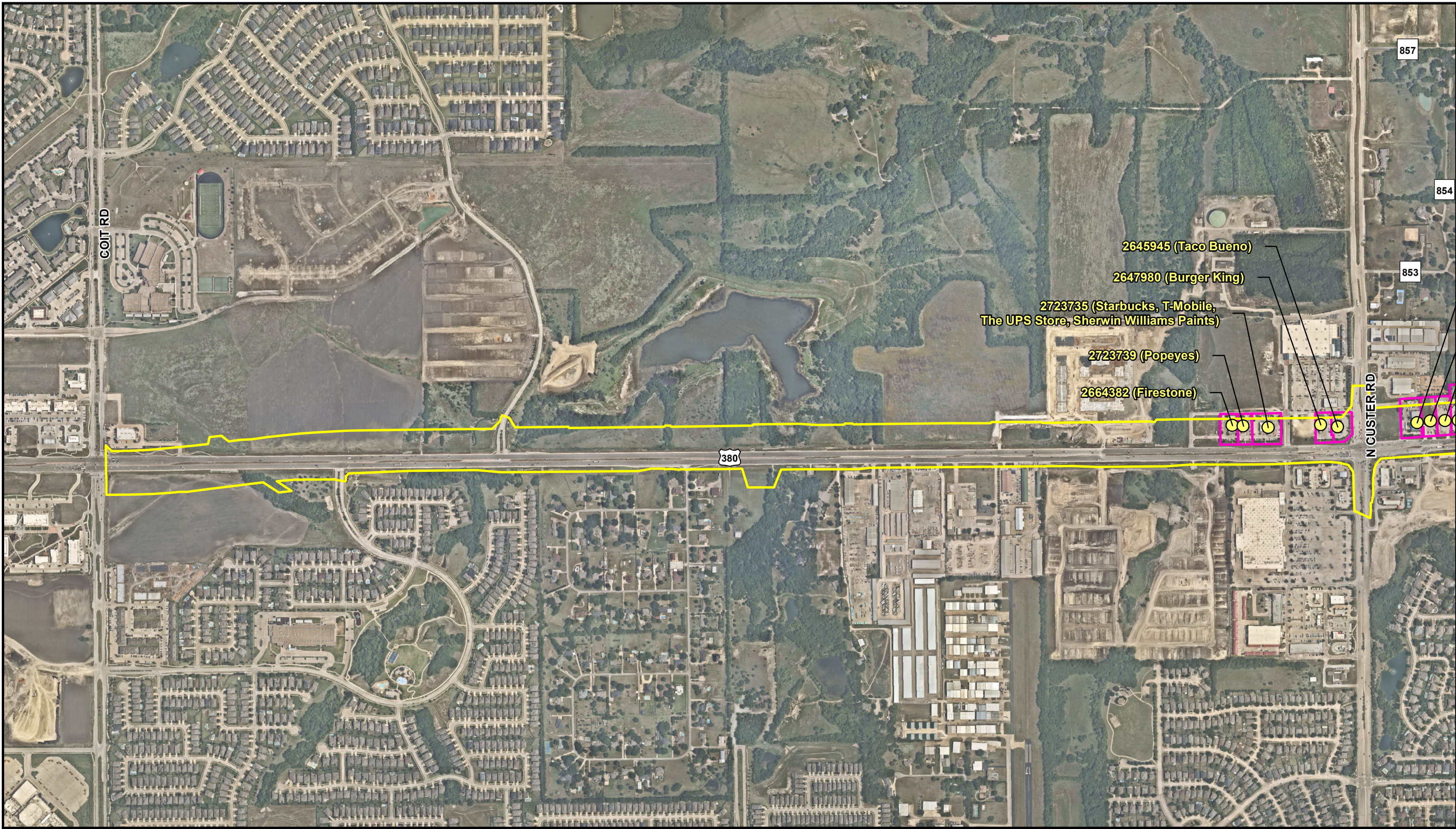


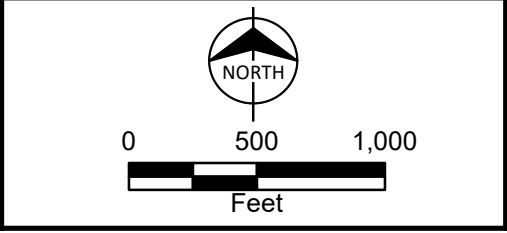
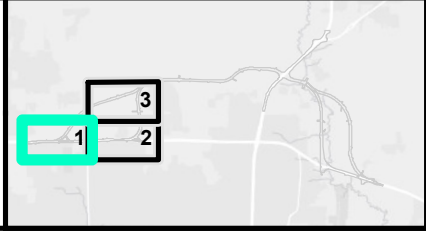
**APPENDIX D: Segment Resource Maps and  
Potential Displacements Maps**



Path: C:\Users\spurgeon\OneDrive - Burns & McDonnell\Desktop\Projects\US 380\DataFiles\ArcDocs\US 380\US 380 DEIS\Displacements\_SegA.mxd spurgeon 7/11/2023  
Service Layer Credits: Esri, HERE, Garmin, (c) OpenStreetMap contributors, and the GIS user community



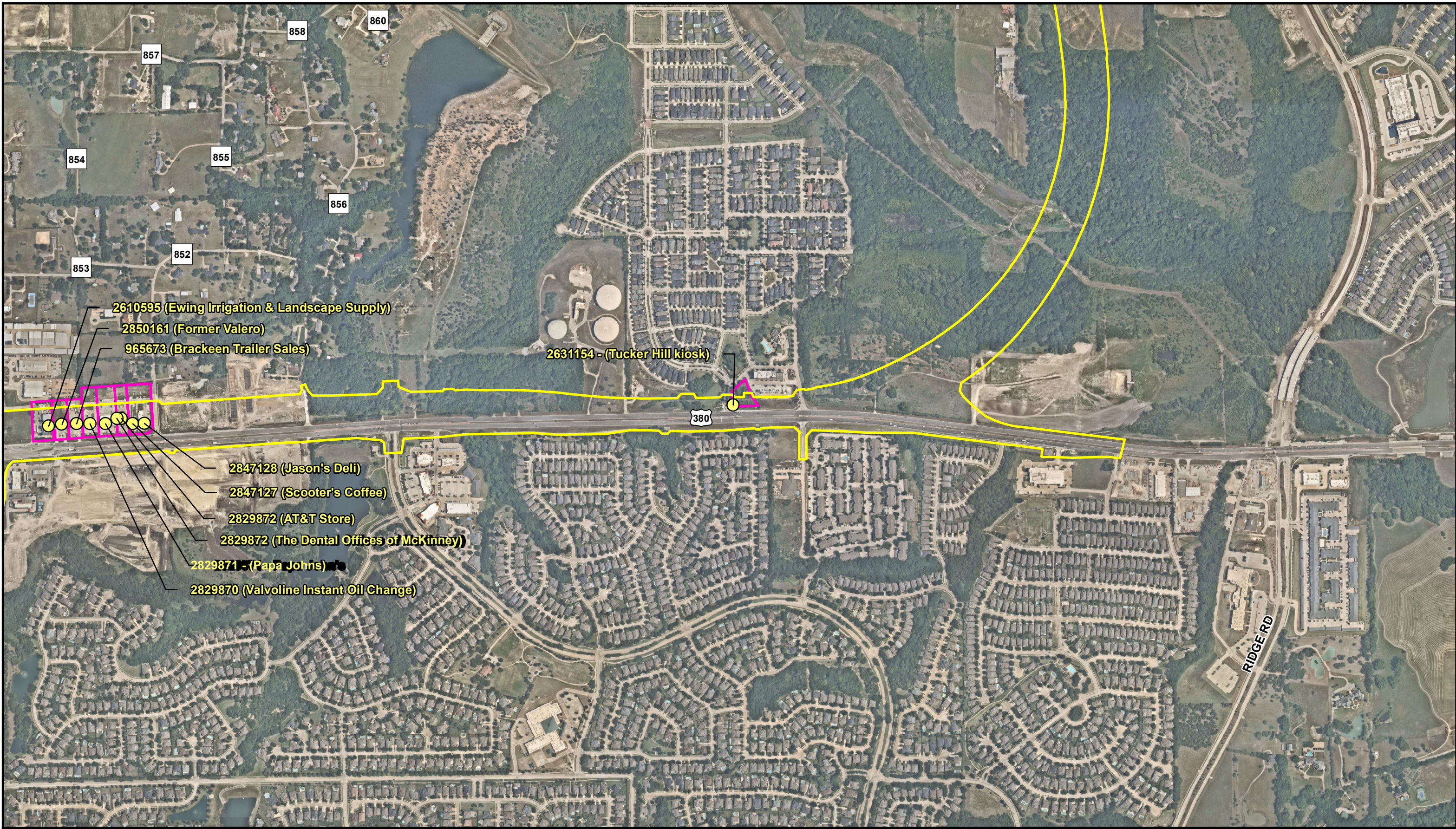
- Segment A Proposed ROW (Purple/Blue Alternatives)
- Potential Displacements Parcels
- Potential Commercial Displacements



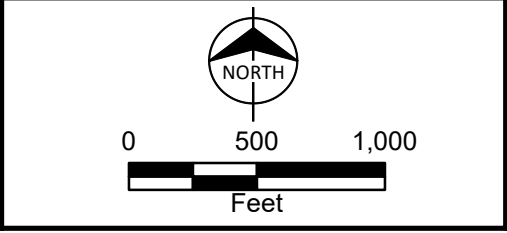
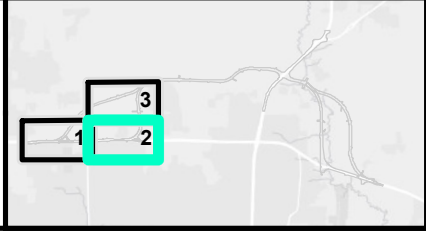
Potential Displacements  
Segment A (Purple/Blue Alternatives)  
US 380 McKinney  
Coit Road to FM 1827  
Collin County, TX  
Map 1 of 3



Path: C:\Users\spurgeon\OneDrive - Burns & McDonnell\Desktop\Projects\US 380\DataFiles\ArcDocs\US 380\US 380 DEIS\Displacements\_SegA.mxd spurgeon 7/11/2023  
Service Layer Credits: Esri, HERE, Garmin, (c) OpenStreetMap contributors, and the GIS user community



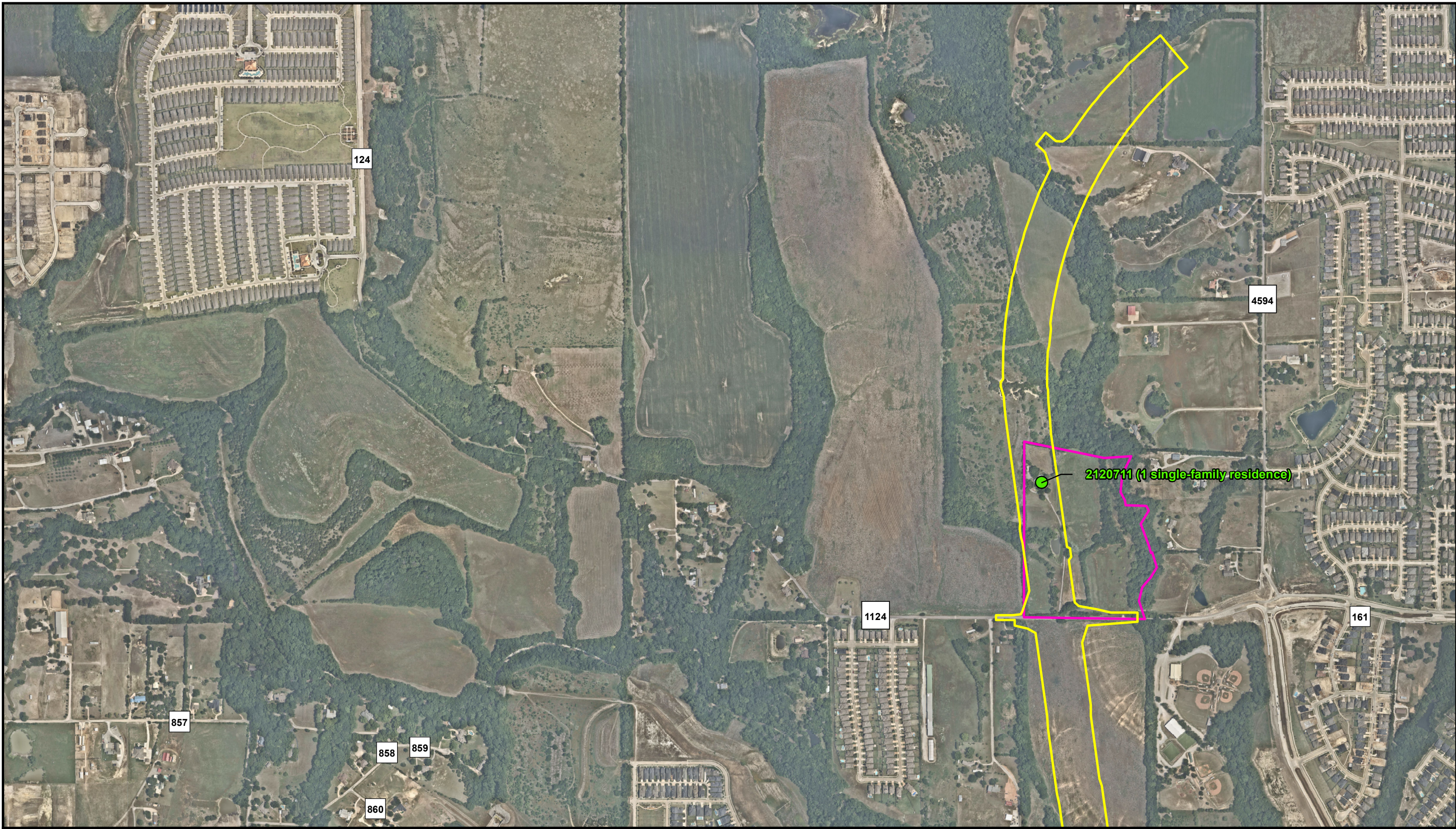
- Segment A Proposed ROW (Purple/Blue Alternatives)
- Potential Displacements Parcels
- Potential Commercial Displacements






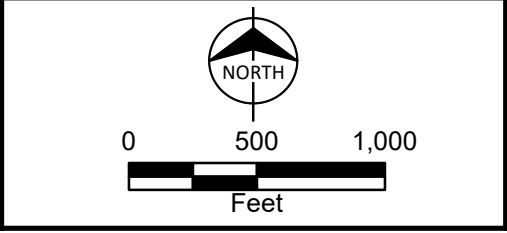
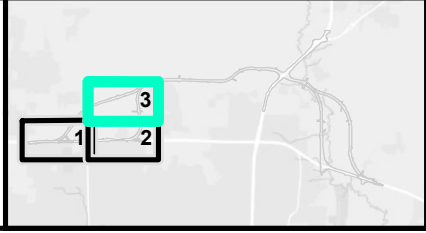
Potential Displacements  
Segment A (Purple/Blue Alternatives)  
US 380 McKinney  
Coit Road to FM 1827  
Collin County, TX  
Map 2 of 3



Path: C:\Users\spurgeon\OneDrive - Burns & McDonnell\Desktop\Projects\US 380\DataFiles\ArcDocs\US 380\US 380 DEIS\Displacements\_SegA.mxd spurgeon 7/11/2023  
Service Layer Credits: Esri, HERE, Garmin, (c) OpenStreetMap contributors, and the GIS user community



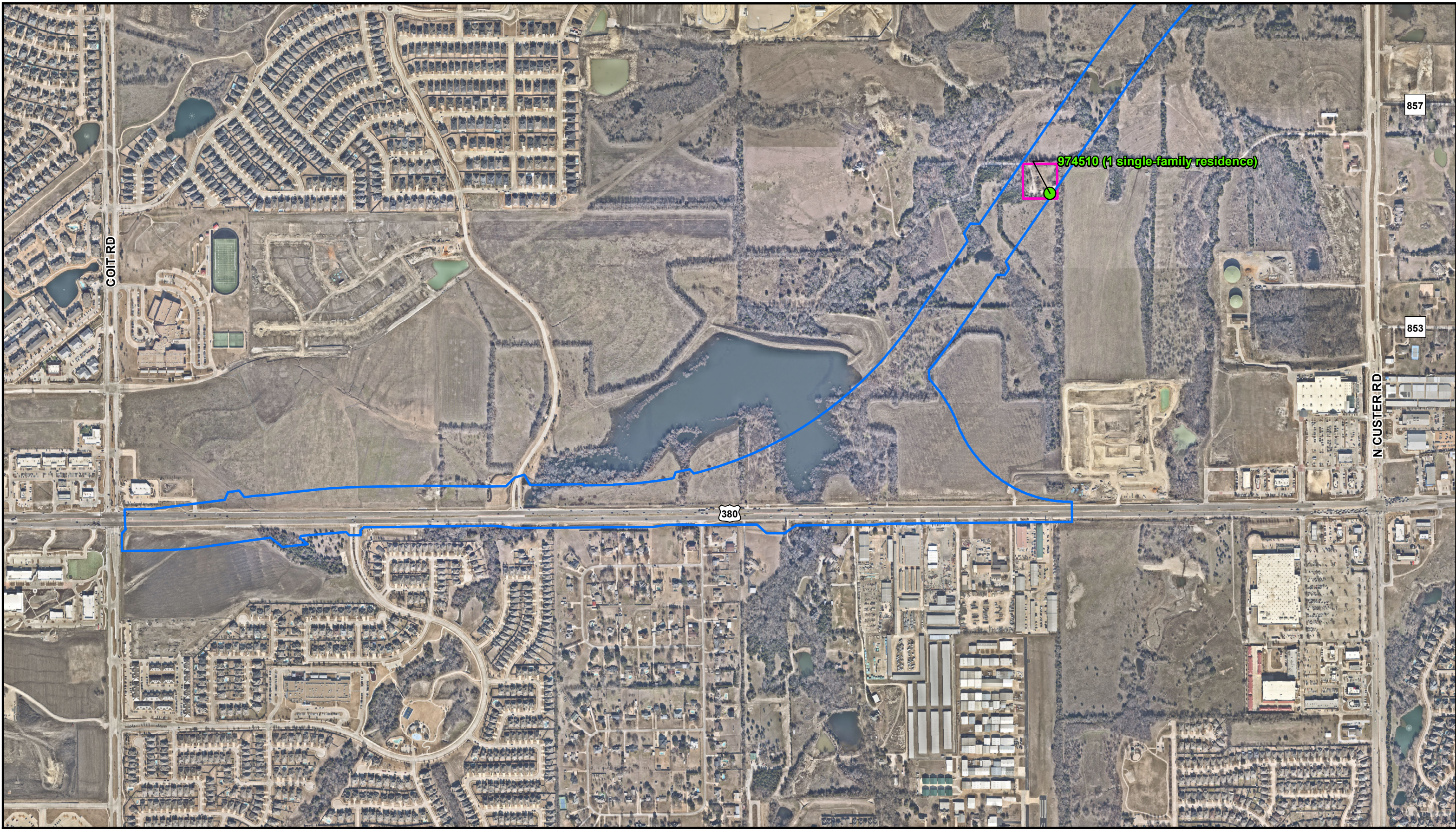
-  Segment A Proposed ROW (Purple/Blue Alternatives)
-  Potential Displacements Parcels
-  Potential Residential Displacements



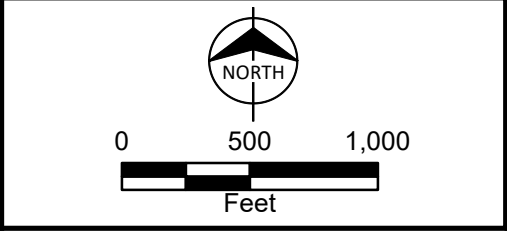
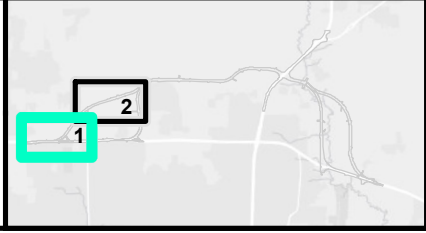
Potential Displacements  
Segment A (Purple/Blue Alternatives)  
US 380 McKinney  
Coit Road to FM 1827  
Collin County, TX  
Map 3 of 3



Path: C:\Users\spurgeon\OneDrive - Burns & McDonnell\Desktop\Projects\US 380\DataFiles\ArcDocs\US 380\US 380 DEIS\Displacements\_SegB.mxd spurgeon 5/17/2023  
Service Layer Credits: Esri, HERE, Garmin, (c) OpenStreetMap contributors, and the GIS user community



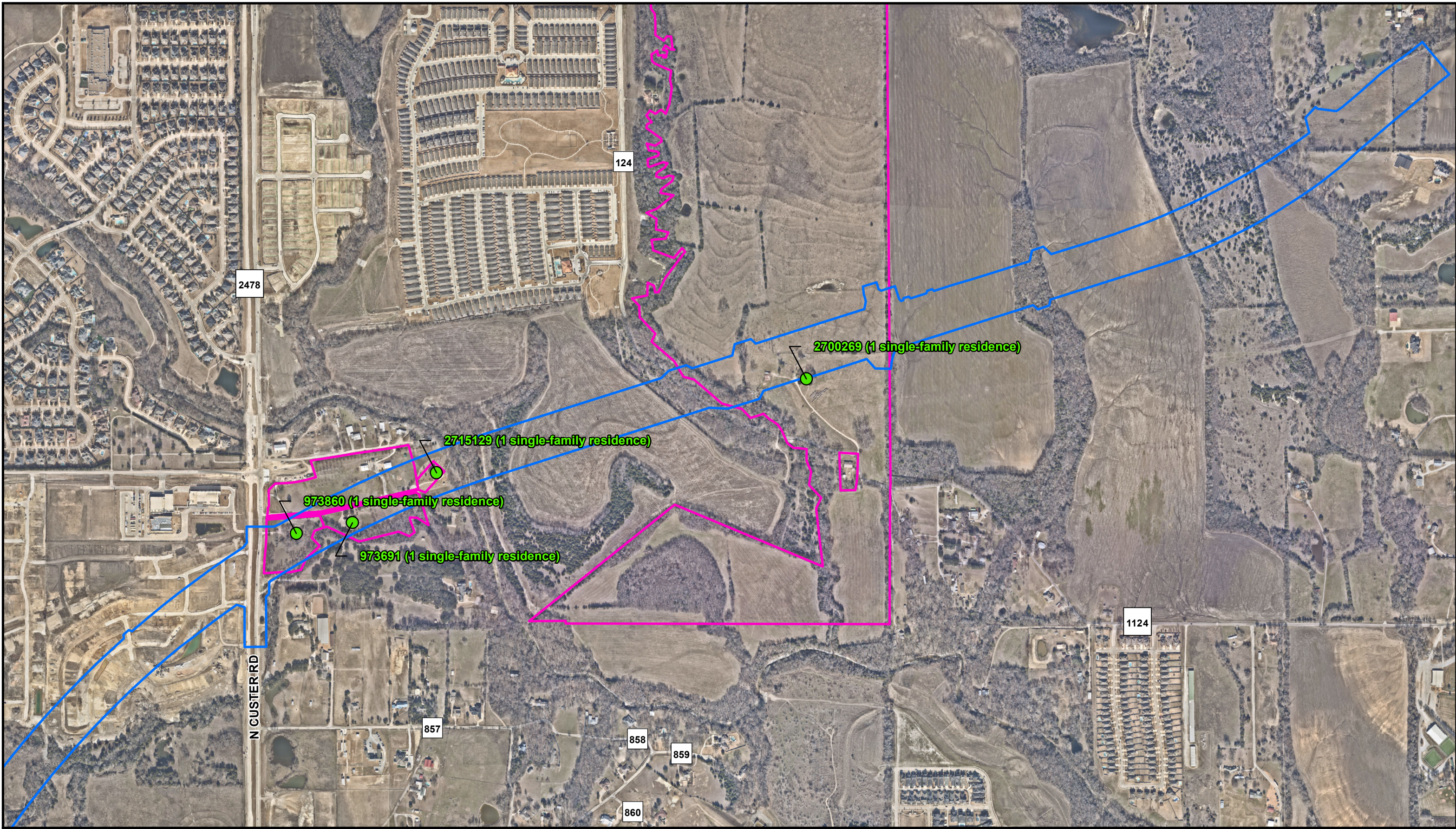
- Segment B Proposed ROW (Brown/Gold Alternatives)
- Potential Displacements Parcels
- Potential Residential Displacements



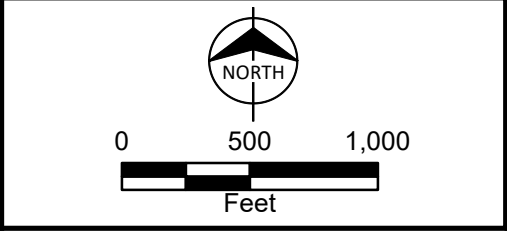
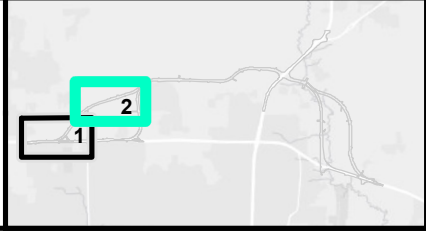
Potential Displacements  
Segment B (Brown/Gold Alternatives)  
US 380 McKinney  
Coit Road to FM 1827  
Collin County, TX  
Map 1 of 2



Path: C:\Users\spurgeon\OneDrive - Burns & McDonnell\Desktop\Projects\US 380\DataFiles\ArcDocs\US 380\US 380 DEIS\Displacements\_SegB.mxd spurgeon 5/17/2023  
Service Layer Credits: Esri, HERE, Garmin, (c) OpenStreetMap contributors, and the GIS user community



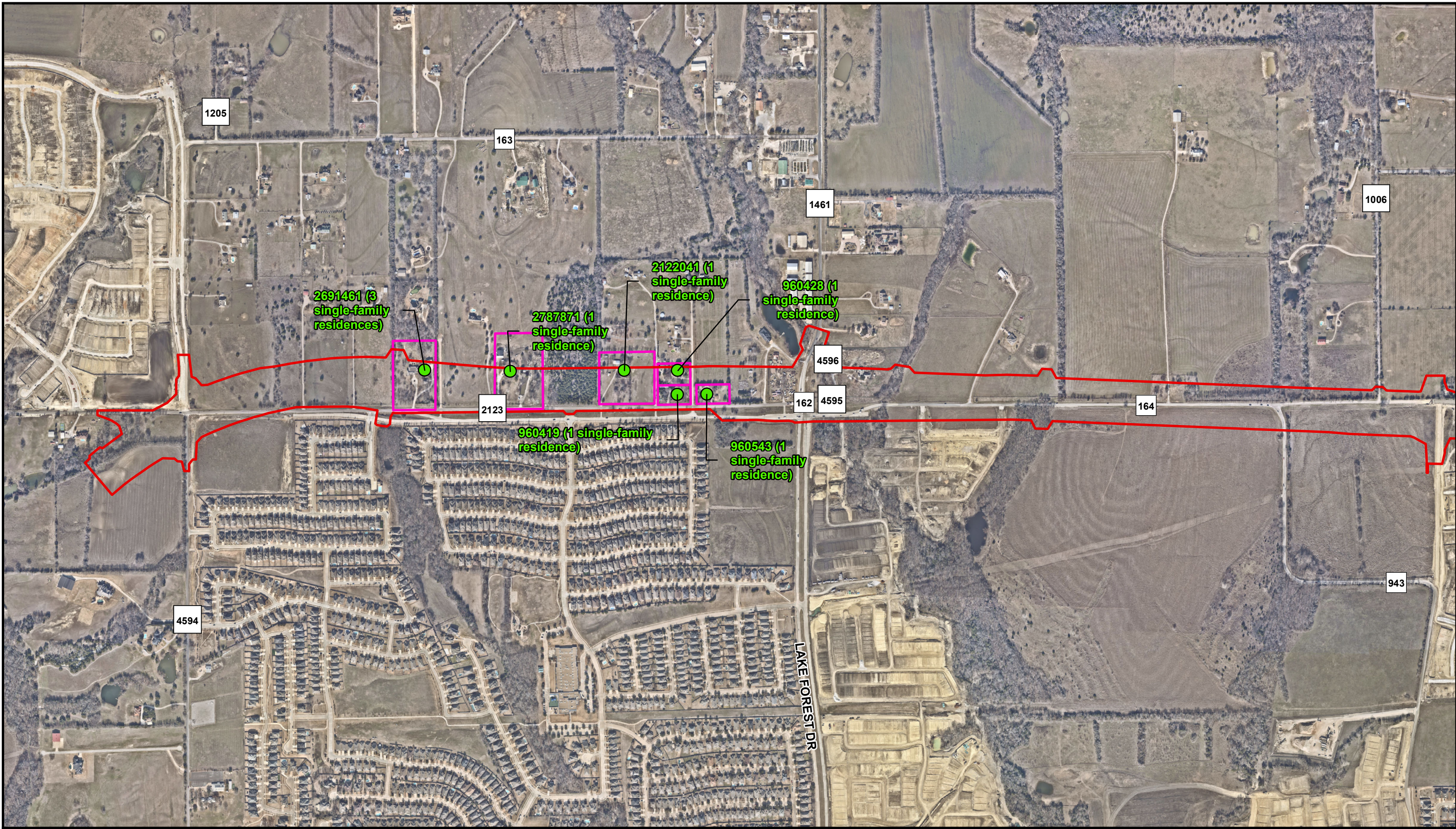
- Segment B Proposed ROW (Brown/Gold Alternatives)
- Potential Displacements Parcels
- Potential Residential Displacements



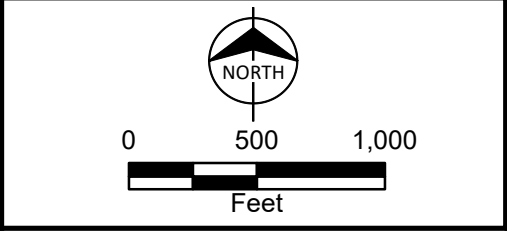
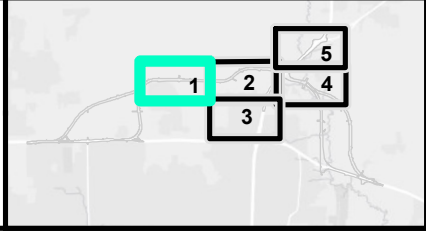
Potential Displacements  
Segment B (Brown/Gold Alternatives)  
US 380 McKinney  
Coit Road to FM 1827  
Collin County, TX  
Map 2 of 2



Path: C:\Users\spurgeon\OneDrive - Burns & McDonnell\Desktop\Projects\US 380\DataFiles\ArcDocs\US 380\US 380 DEIS\Displacements\_SegE.mxd sspurgeon 5/17/2023  
Service Layer Credits: Esri, HERE, Garmin, (c) OpenStreetMap contributors, and the GIS user community



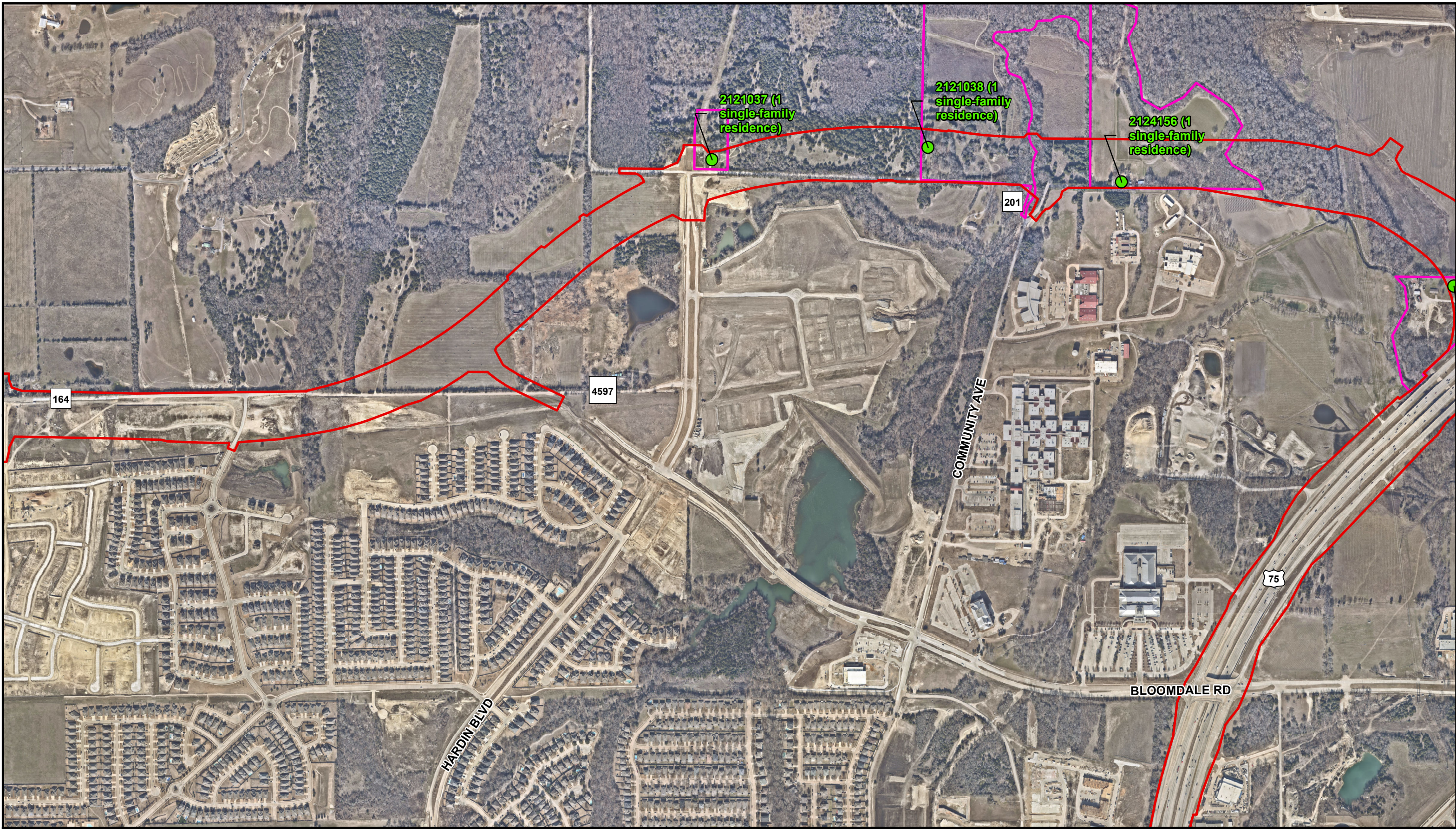
- Segment E Proposed ROW
- Potential Displacements Parcels
- Potential Residential Displacements



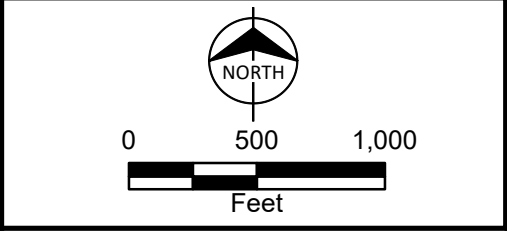
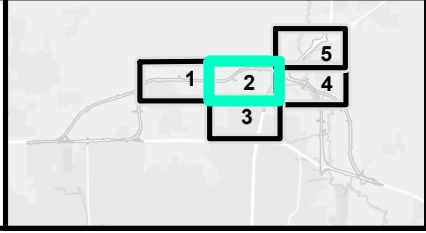
Potential Displacements  
Segment E (All Alternatives)  
US 380 McKinney  
Coit Road to FM 1827  
Collin County, TX  
Map 1 of 5



Path: C:\Users\spurgeon\OneDrive - Burns & McDonnell\Desktop\Projects\US 380\DataFiles\ArcDocs\US 380\US 380 DEIS\Displacements\_SegE.mxd spurgeon 5/17/2023  
Service Layer Credits: Esri, HERE, Garmin, (c) OpenStreetMap contributors, and the GIS user community



- Segment E Proposed ROW
- Potential Displacements Parcels
- Potential Residential Displacements




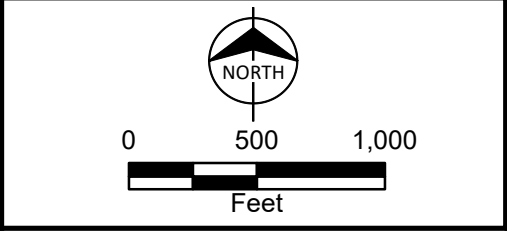
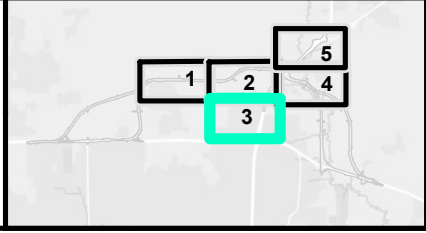
Potential Displacements  
Segment E (All Alternatives)  
US 380 McKinney  
Coit Road to FM 1827  
Collin County, TX  
Map 2 of 5



Path: C:\Users\spurgeon\OneDrive - Burns & McDonnell\Desktop\Projects\US 380\DataFiles\ArcDocs\US 380\US 380 DEIS\Displacements\_SegE.mxd spurgeon 5/17/2023  
Service Layer Credits: Esri, HERE, Garmin, (c) OpenStreetMap contributors, and the GIS user community



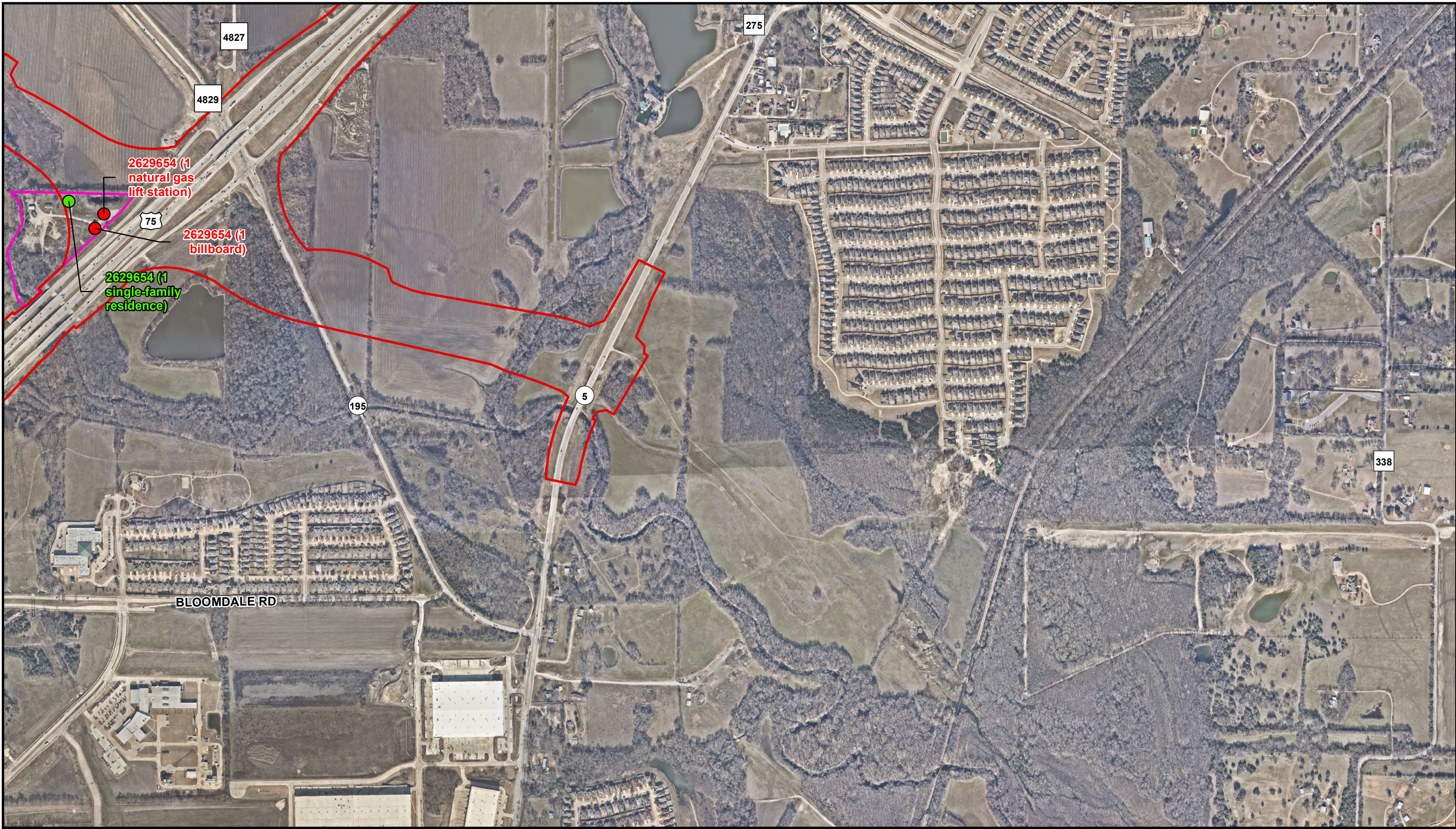
 Segment E Proposed ROW







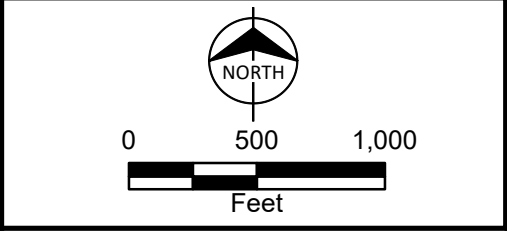
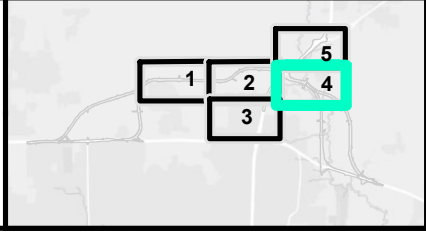
Potential Displacements  
Segment E (All Alternatives)  
US 380 McKinney  
Coit Road to FM 1827  
Collin County, TX  
Map 3 of 5



Path: C:\Users\spurgeon\OneDrive - Burns & McDonnell\Desktop\Projects\US 380\DataFiles\ArcDocs\US 380\US 380 DEIS\Displacements\_SegE.mxd spurgeon 5/17/2023  
Service Layer Credits: Esri, HERE, Garmin, (c) OpenStreetMap contributors, and the GIS user community



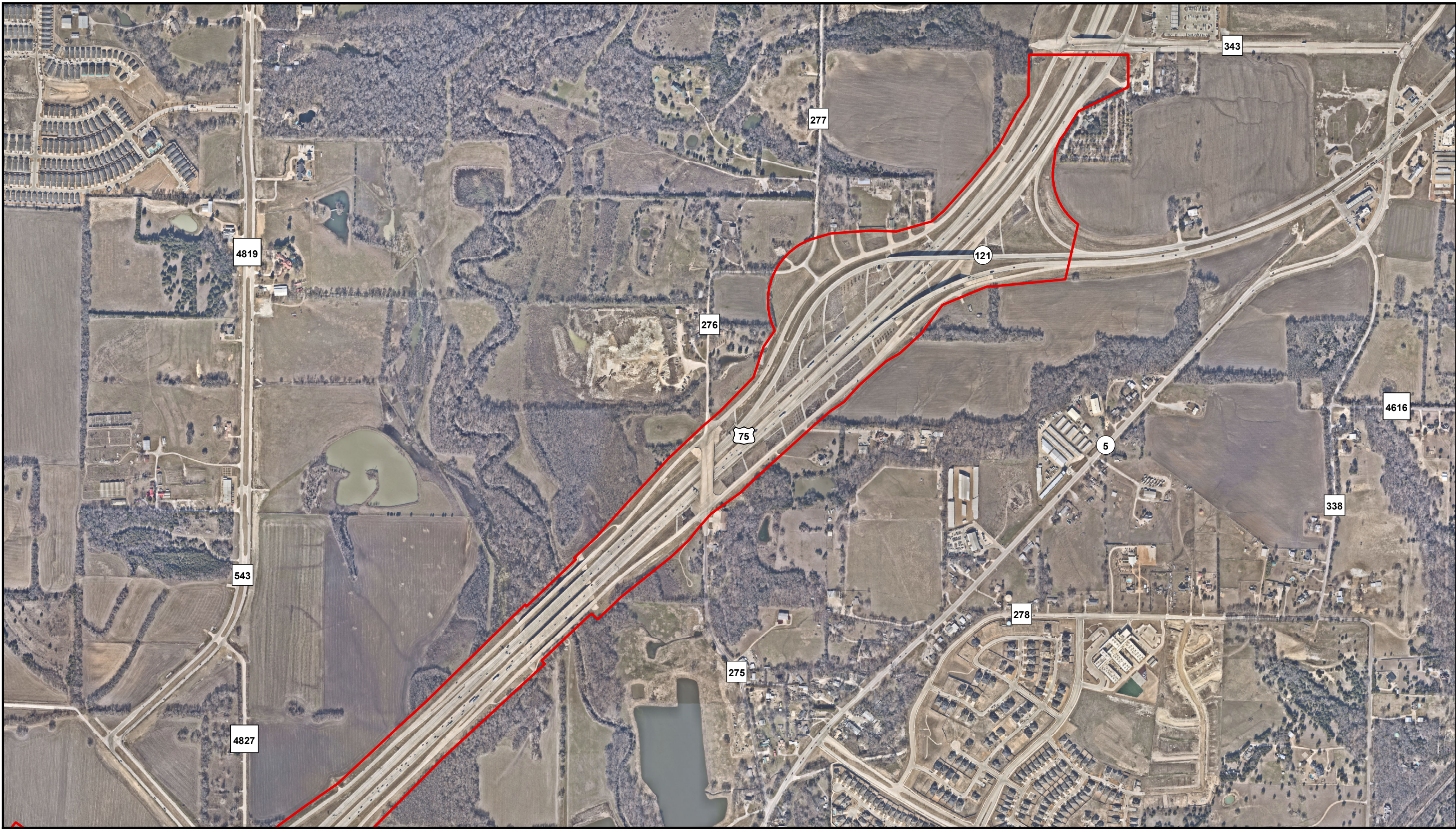
-  Segment E Proposed ROW
-  Potential Displacements Parcels
-  Potential Other Displacements
-  Potential Residential Displacements




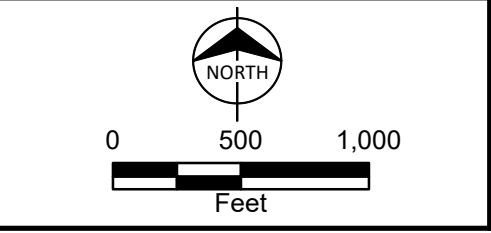
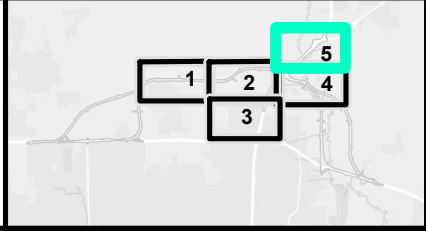
Potential Displacements  
Segment E (All Alternatives)  
US 380 McKinney  
Coit Road to FM 1827  
Collin County, TX  
Map 4 of 5



Path: C:\Users\spurgeon\OneDrive - Burns & McDonnell\Desktop\Projects\US 380\DataFiles\ArcDocs\US 380\US 380 DEIS\Displacements\_SegE.mxd spurgeon 5/17/2023  
Service Layer Credits: Esri, HERE, Garmin, (c) OpenStreetMap contributors, and the GIS user community



 Segment E Proposed ROW



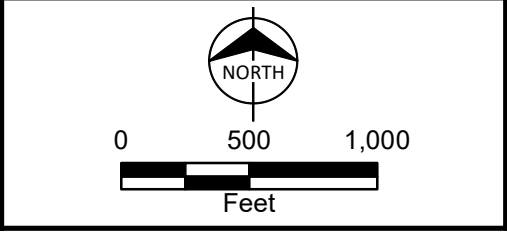
Potential Displacements  
Segment E (All Alternatives)  
US 380 McKinney  
Coit Road to FM 1827  
Collin County, TX  
Map 5 of 5



Path: C:\Users\sspurgeon\OneDrive - Burns & McDonnell\Desktop\Projects\US 380\DataFiles\ArcDocs\US 380\US 380 DEIS\Displacements\_SegC.mxd sspurgeon 5/17/2023  
Service Layer Credits: Esri, HERE, Garmin, (c) OpenStreetMap contributors, and the GIS user community



- Segment C Proposed ROW W/Spur (Blue/Brown Alternatives)
- Potential Displacements Parcels
- Potential Residential Displacements




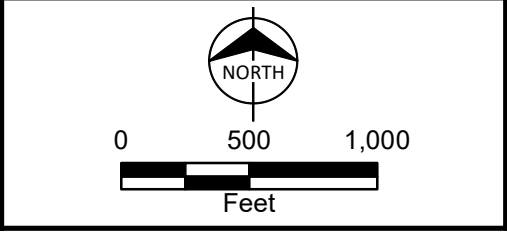
Potential Displacements  
Segment C (Blue/Brown Alternatives)  
US 380 McKinney  
Coit Road to FM 1827  
Collin County, TX  
Map 1 of 4



Path: C:\Users\sspurgeon\OneDrive - Burns & McDonnell\Desktop\Projects\US 380\DataFiles\ArcDocs\US 380\US 380 DEIS\Displacements\_SegC.mxd sspurgeon 5/17/2023  
Service Layer Credits: Esri, HERE, Garmin, (c) OpenStreetMap contributors, and the GIS user community



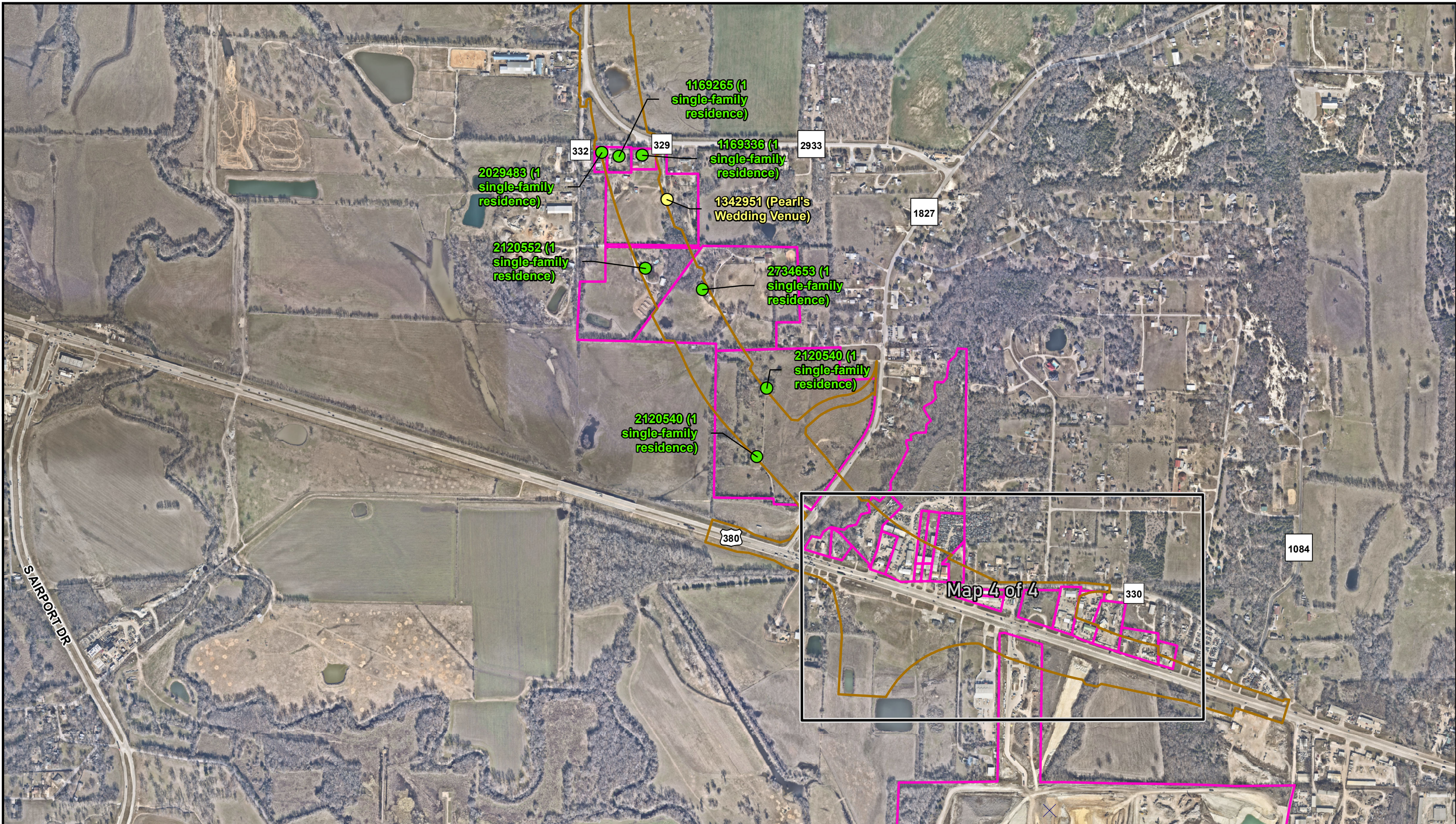
 Segment C Proposed ROW W/Spur (Blue/Brown Alternatives)



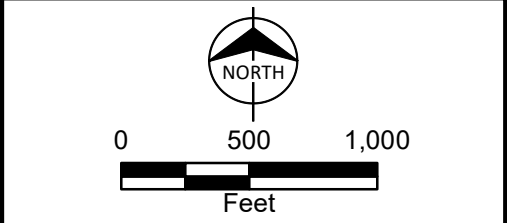
Potential Displacements  
Segment C (Blue/Brown Alternatives)  
US 380 McKinney  
Coit Road to FM 1827  
Collin County, TX  
Map 2 of 4



Path: C:\Users\sspurgeon\OneDrive - Burns & McDonnell\Desktop\Projects\US 380\DataFiles\ArcDocs\US 380\US 380 DEIS\Displacements\_SegC.mxd sspurgeon 5/17/2023  
Service Layer Credits: Esri, HERE, Garmin, (c) OpenStreetMap contributors, and the GIS user community



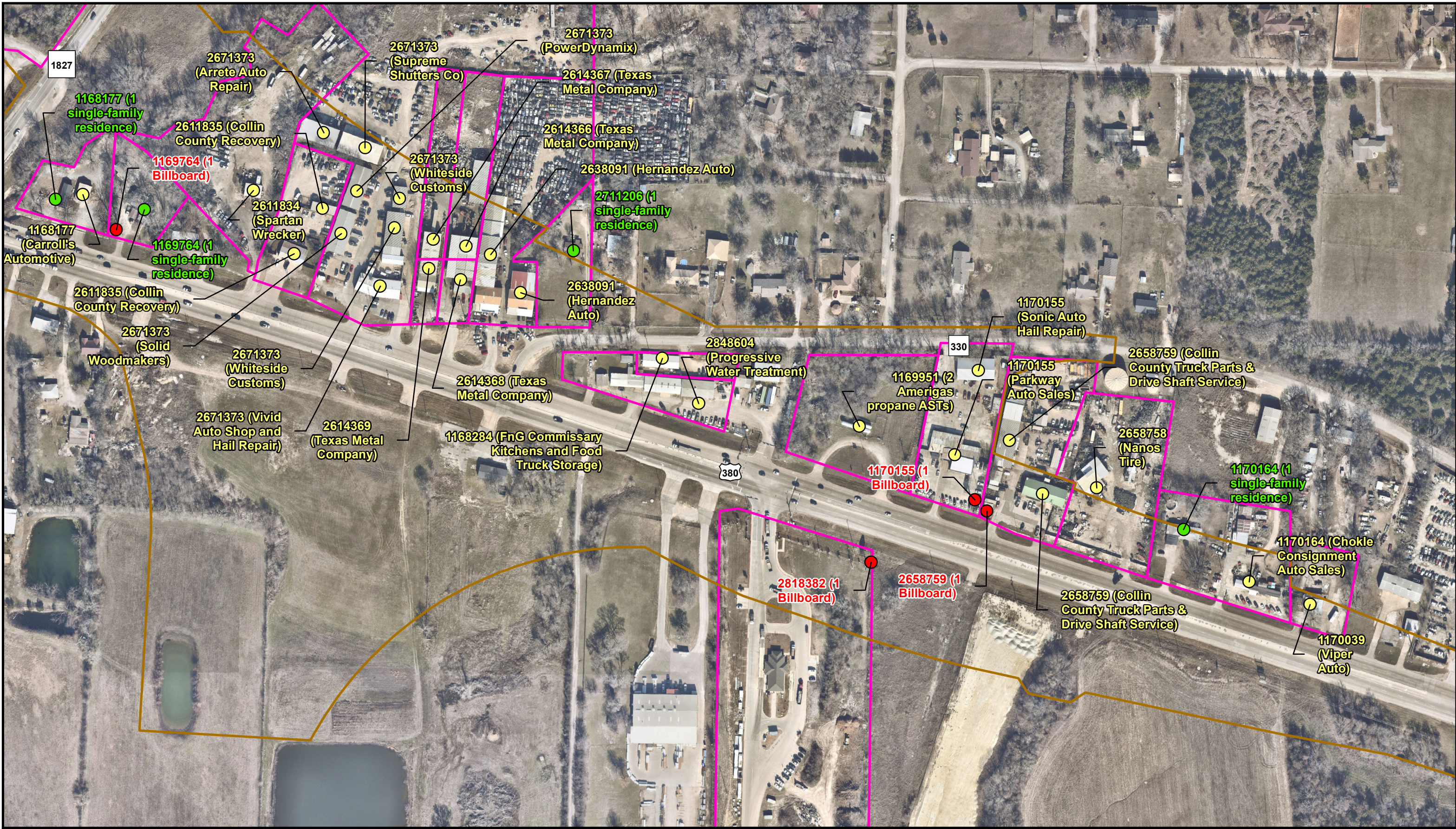
- Segment C Proposed ROW W/Spur (Blue/Brown Alternatives)
- Potential Displacements Parcels
- Potential Commercial Displacements
- Potential Residential Displacements



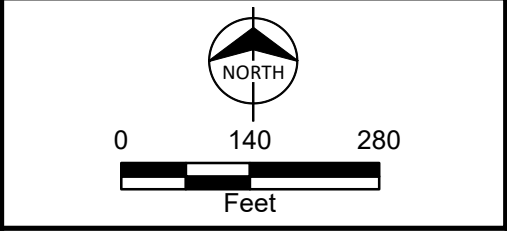
Potential Displacements  
Segment C (Blue/Brown Alternatives)  
US 380 McKinney  
Coit Road to FM 1827  
Collin County, TX  
Map 3 of 4



Path: C:\Users\sspurgeon\OneDrive - Burns & McDonnell\Desktop\Projects\US 380\DataFiles\ArcDocs\US 380\US 380 DEIS\Displacements\_SegC.mxd sspurgeon 5/17/2023  
 Service Layer Credits: Esri, HERE, Garmin, (c) OpenStreetMap contributors, and the GIS user community



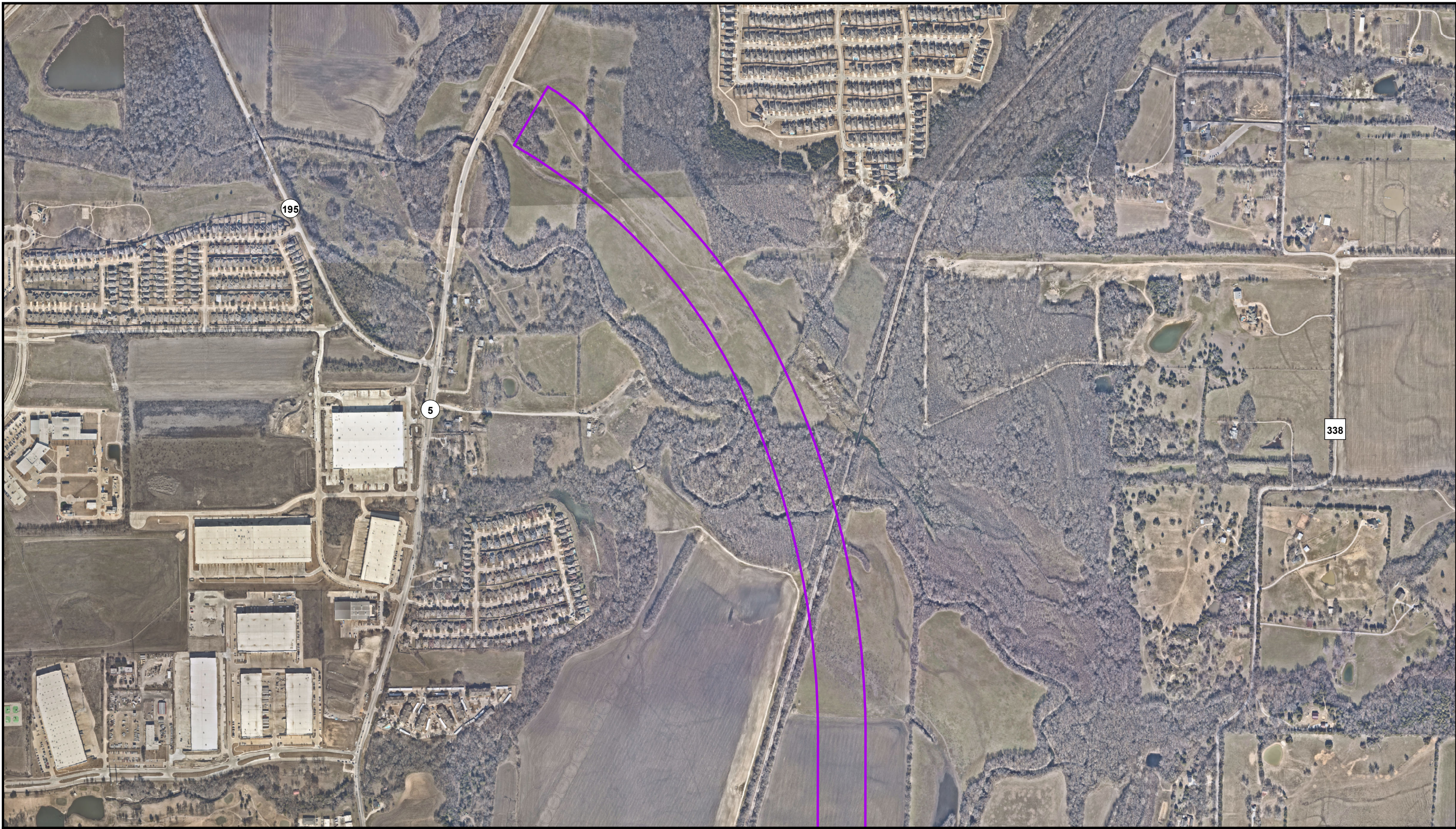
- Segment C Proposed ROW W/Spur (Blue/Brown Alternatives)
- Potential Displacements Parcels
- Potential Commercial Displacements
- Potential Other Displacements
- Potential Residential Displacements



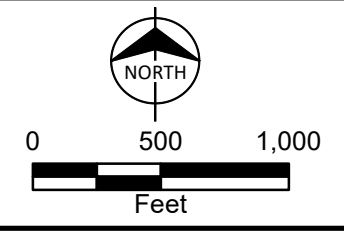
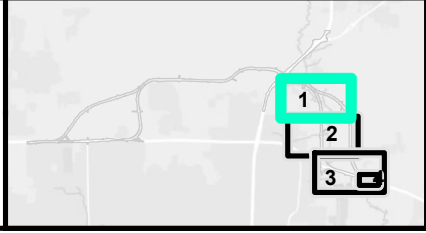
Potential Displacements  
 Segment C (Blue/Brown Alternatives)  
 US 380 McKinney  
 Coit Road to FM 1827  
 Collin County, TX  
 Map 4 of 4



Path: C:\Users\sspurgeon\OneDrive - Burns & McDonnell\Desktop\Projects\US 380\DataFiles\ArcDocs\US 380\US 380 DEIS\Displacements\_SegD.mxd sspurgeon 5/17/2023  
Service Layer Credits: Esri, HERE, Garmin, (c) OpenStreetMap contributors, and the GIS user community



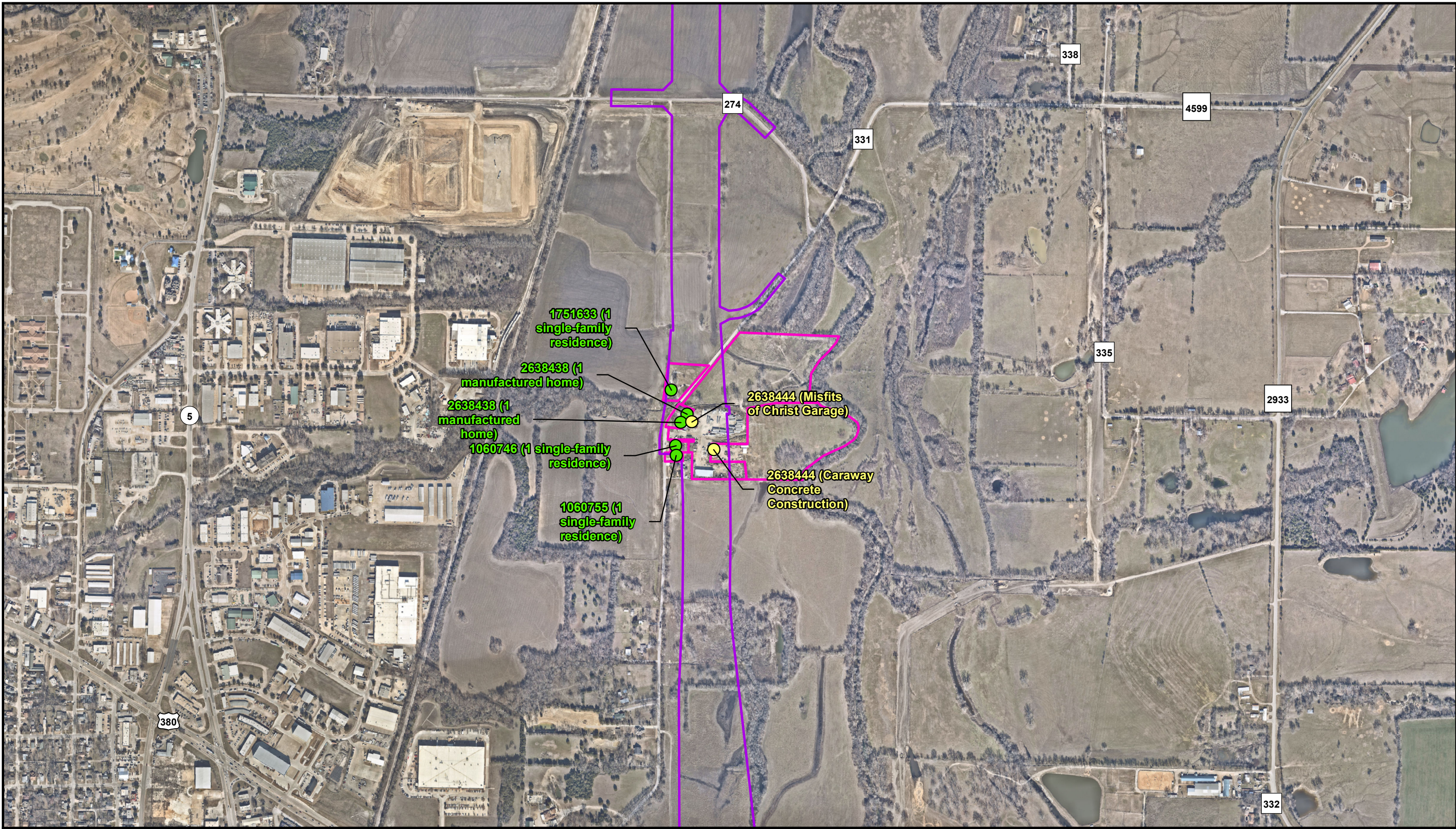
Segment D Proposed ROW W/Spur (Purple/Gold Alternatives)







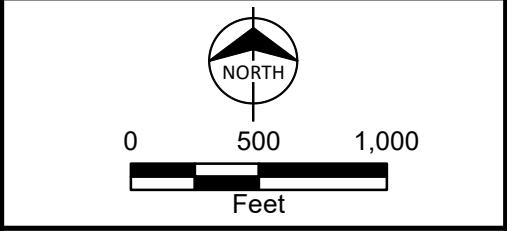
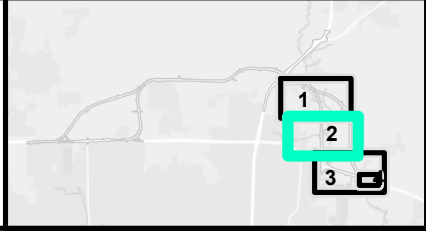
Potential Displacements  
Segment D (Purple/Gold Alternatives)  
US 380 McKinney  
Coit Road to FM 1827  
Collin County, TX  
Map 1 of 4



Path: C:\Users\sspurgeon\OneDrive - Burns & McDonnell\Desktop\Projects\US 380\DataFiles\ArcDocs\US 380\US 380 DEIS\Displacements\_SegD.mxd sspurgeon 5/17/2023  
Service Layer Credits: Esri, HERE, Garmin, (c) OpenStreetMap contributors, and the GIS user community



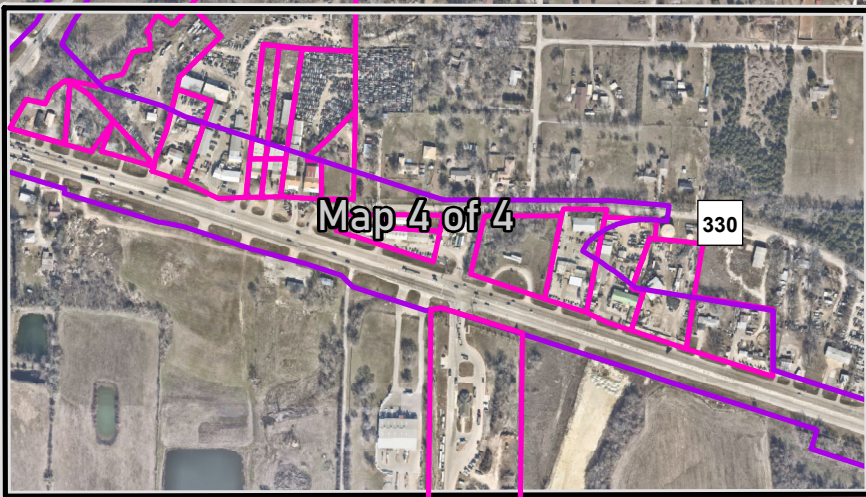
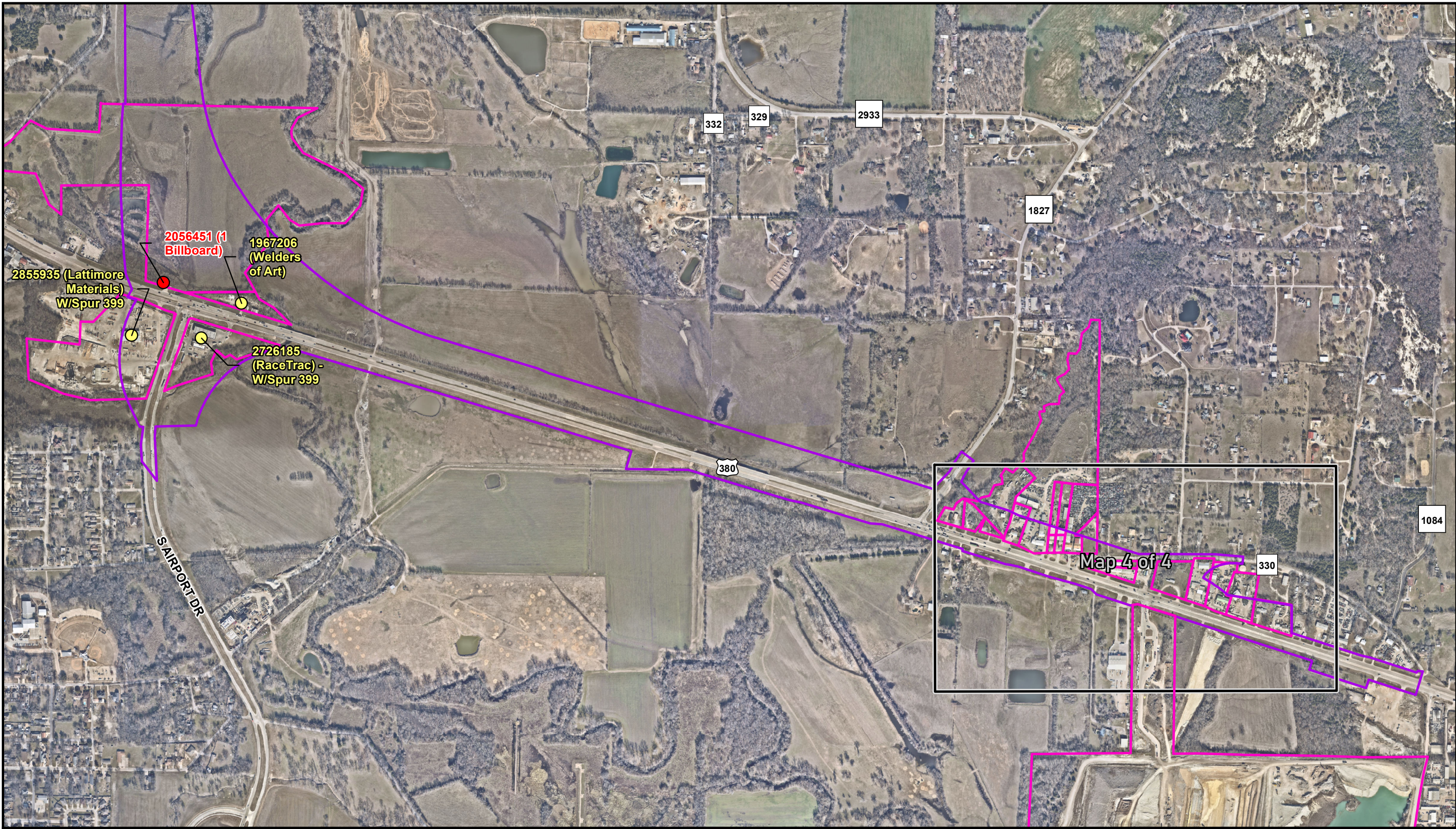
-  Segment D Proposed ROW W/Spur (Purple/Gold Alternatives)
-  Potential Displacements Parcels
-  Potential Commercial Displacements
-  Potential Residential Displacements



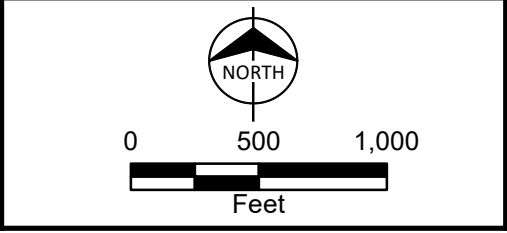
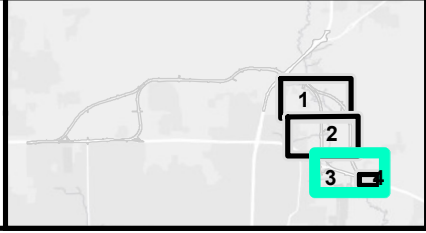
Potential Displacements  
Segment D (Purple/Gold Alternatives)  
US 380 McKinney  
Coit Road to FM 1827  
Collin County, TX  
Map 2 of 4



Path: C:\Users\sspurgeon\OneDrive - Burns & McDonnell\Desktop\Projects\US 380\DataFiles\ArcDocs\US 380\US 380 DEIS\Displacements\_SegD.mxd sspurgeon 5/17/2023  
Service Layer Credits: Esri, HERE, Garmin, (c) OpenStreetMap contributors, and the GIS user community



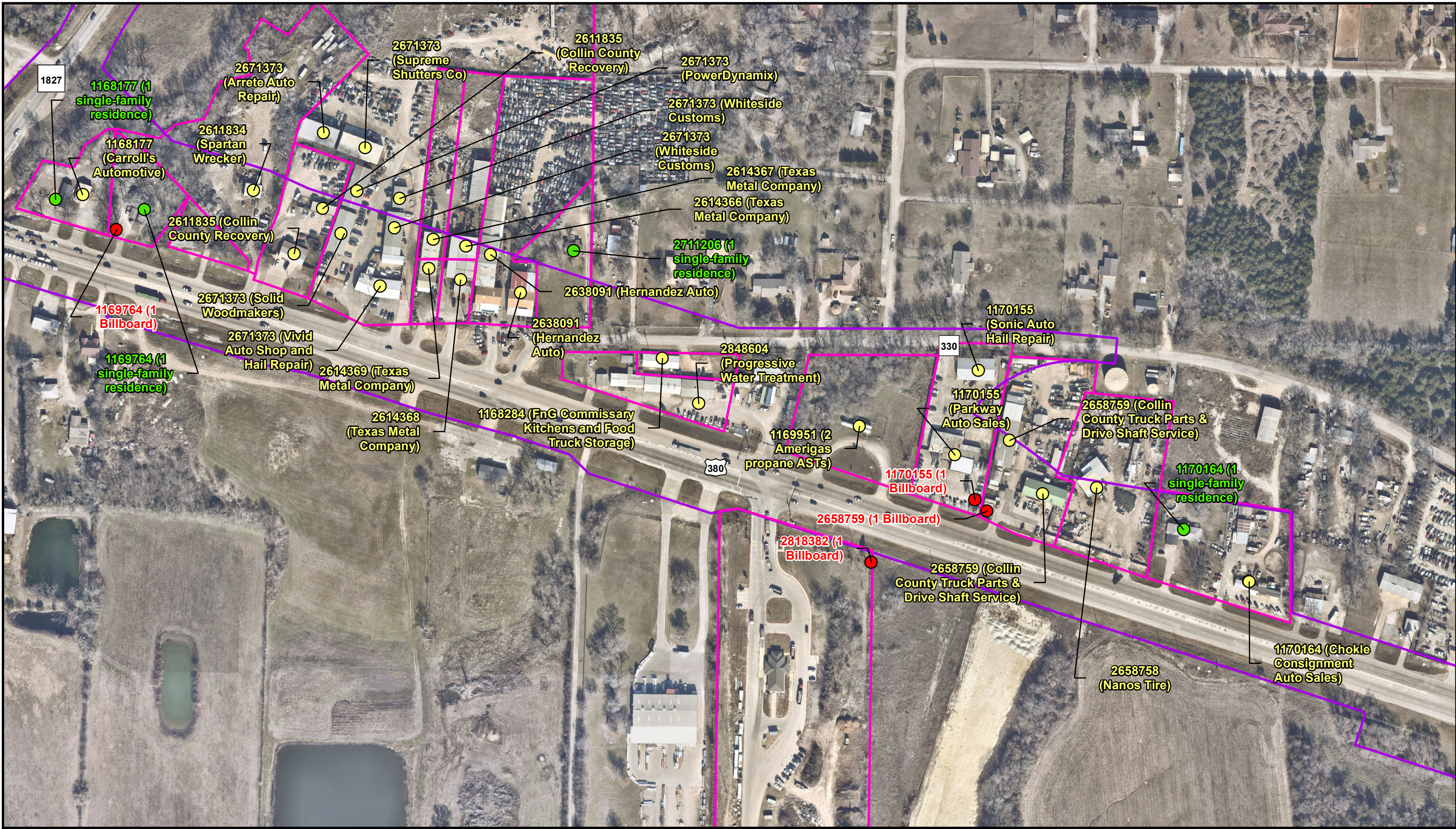
- Segment D Proposed ROW W/Spur (Purple/Gold Alternatives)
- Potential Displacements Parcels
- Potential Commercial Displacements
- Potential Other Displacements



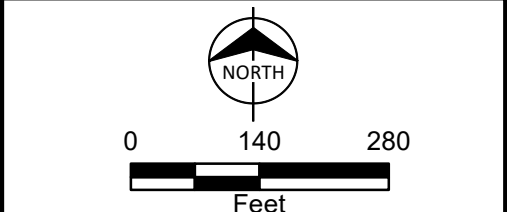
Potential Displacements  
Segment D (Purple/Gold Alternatives)  
US 380 McKinney  
Coit Road to FM 1827  
Collin County, TX  
Map 3 of 4



Path: C:\Users\sspurgeon\OneDrive - Burns & McDonnell\Desktop\Projects\US 380\GIS\Map\ArcDocs\US 380\US 380 DEIS\Displacements\_SegD.mxd sspurgeon 5/17/2023  
 Service Layer Credits: Esri, HERE, Garmin, (c) OpenStreetMap contributors, and the GIS user community



- Segment D Proposed ROW W/Spur (Purple/Gold Alternatives)
- Potential Displacements Parcels
- Potential Commercial Displacements
- Potential Other Displacements
- Potential Residential Displacements



Potential Displacements  
 Segment D (Purple/Gold Alternatives)  
 US 380 McKinney  
 Coit Road to FM 1827  
 Collin County, TX  
 Map 4 of 4