

BaseMap Source: NCTCOG, 2008

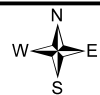
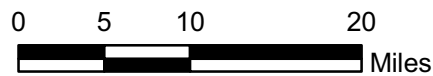
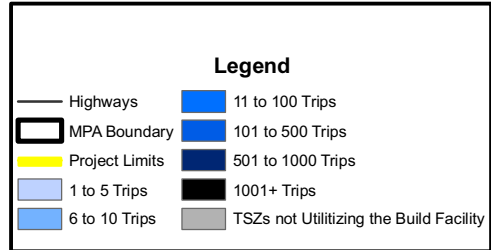
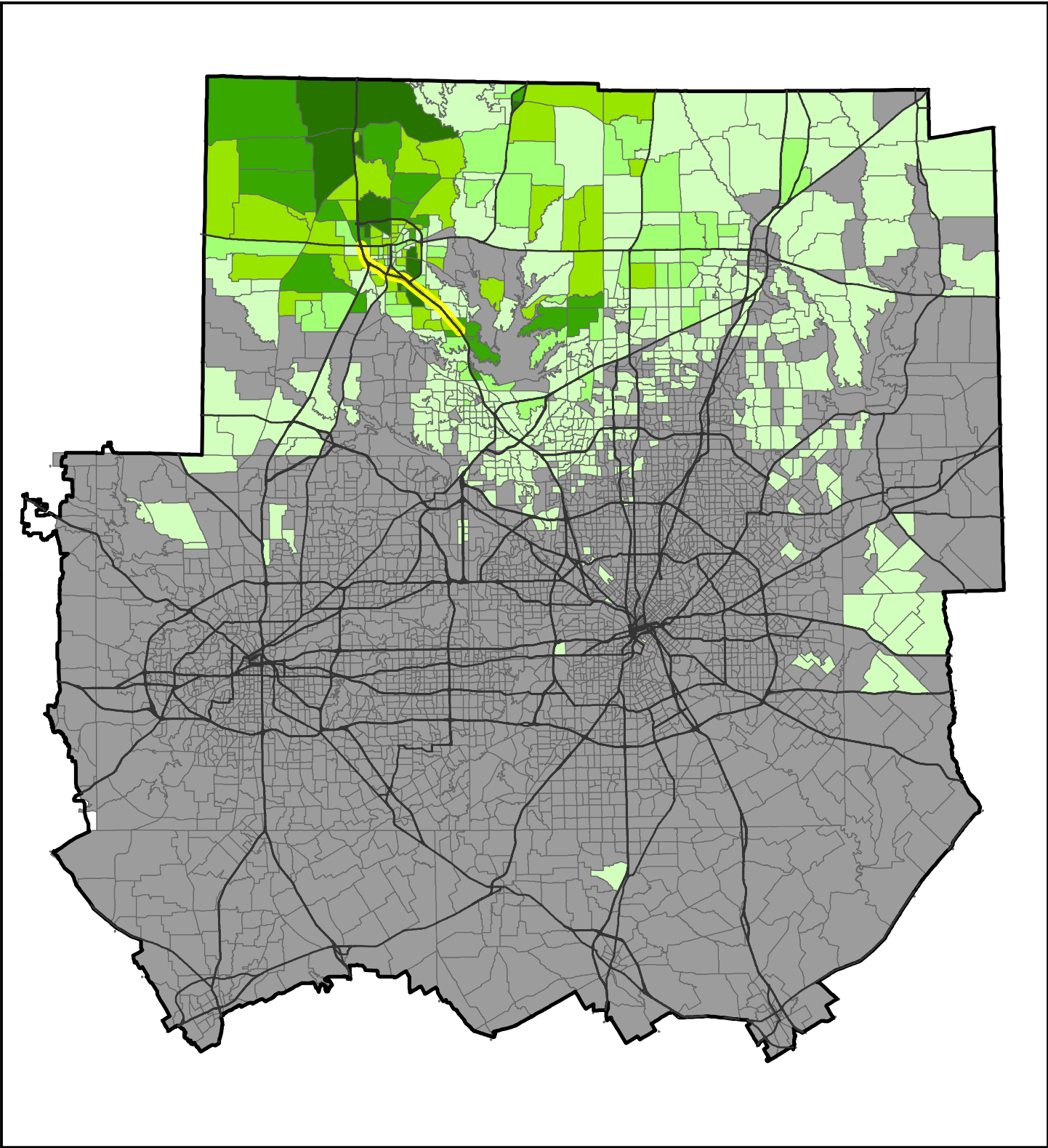


FIGURE C-7
TSZs Utilizing the Mainlanes at Least
Once a Day in the 2030 Build Scenario
 IH 35E
 FROM FM 2181 TO US 380
 DENTON COUNTY, TEXAS





BaseMap Source: NCTCOG, 2008

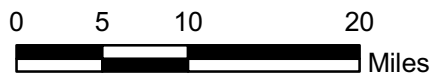
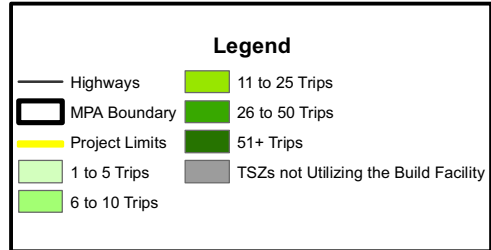
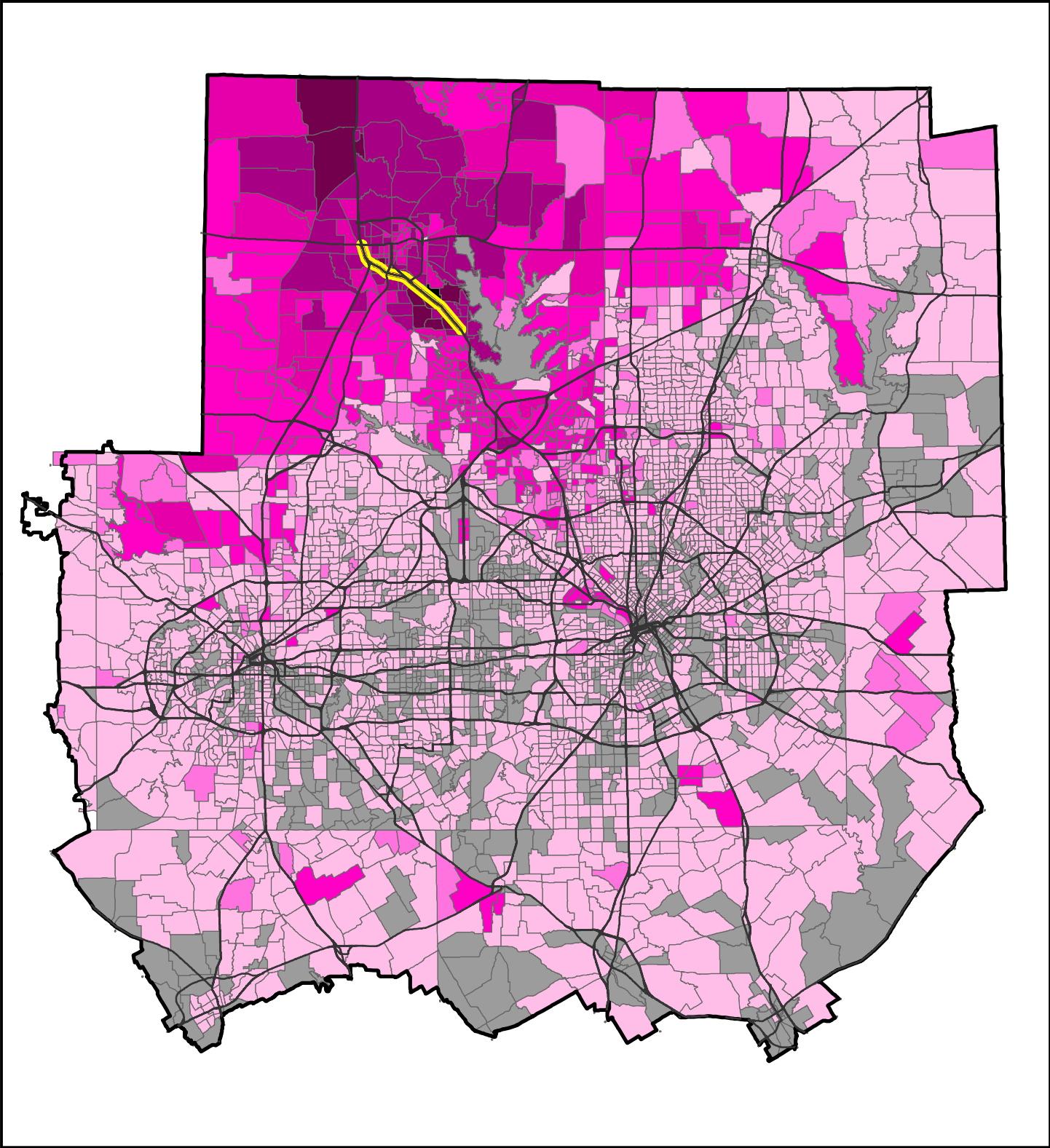


FIGURE C-8
TSZs Utilizing the Managed Lanes at
Least Once a Day in the 2030 Build Scenario
 IH 35E
 FROM FM 2181 TO US 380
 DENTON COUNTY, TEXAS





BaseMap Source: NCTCOG, 2008

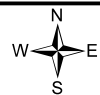
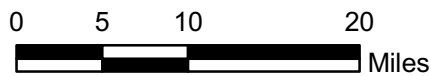
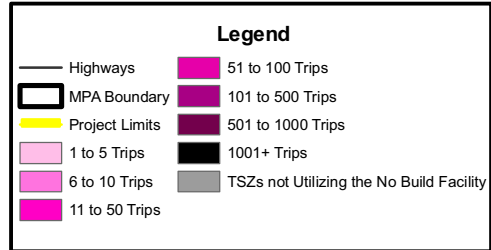
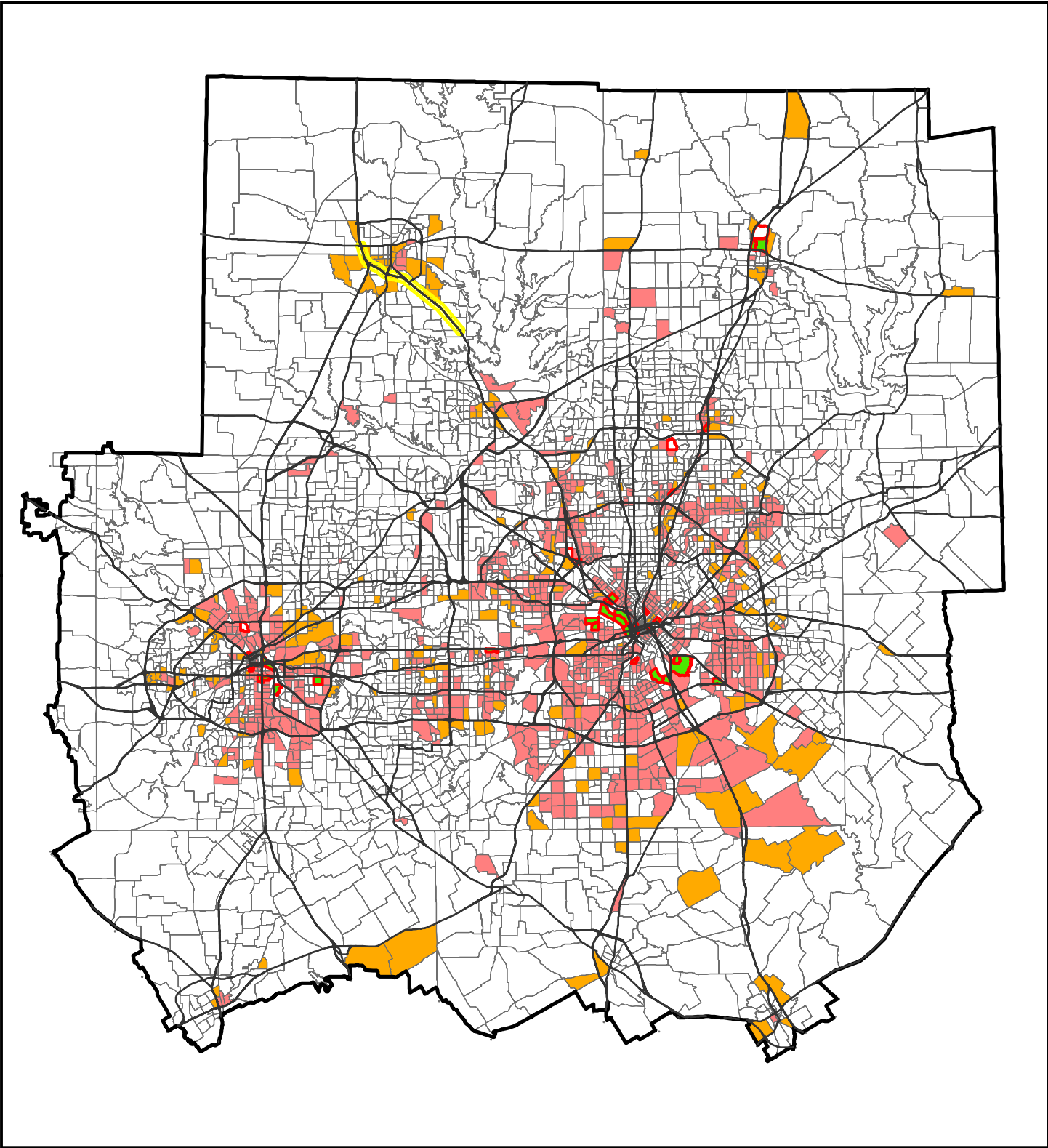


FIGURE C-9
TSZs Utilizing the Existing Facility at
Least Once a Day in the 2030 No Build Scenario
 IH 35E
 FROM FM 2181 TO US 380
 DENTON COUNTY, TEXAS





BaseMap Source: NCTCOG, 2008

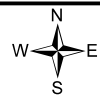
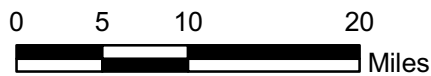


FIGURE C-10
Breakdown of EJ TSZs Utilizing the Mainlanes at
Least Once a Day in the 2030 Build Scenario

IH 35E
 FROM FM 2181 TO US 380
 DENTON COUNTY, TEXAS

Legend

- Highways
- ▭ MPA Boundary
- ▭ Project Limits
- ▭ Low-income > 50%
- ▭ Minority > 50%, Low-income > 50%
- ▭ Minority < 50%, Low-income < 50%, Combined > 50%
- ▭ Minority > 50%
- ▭ TSZs