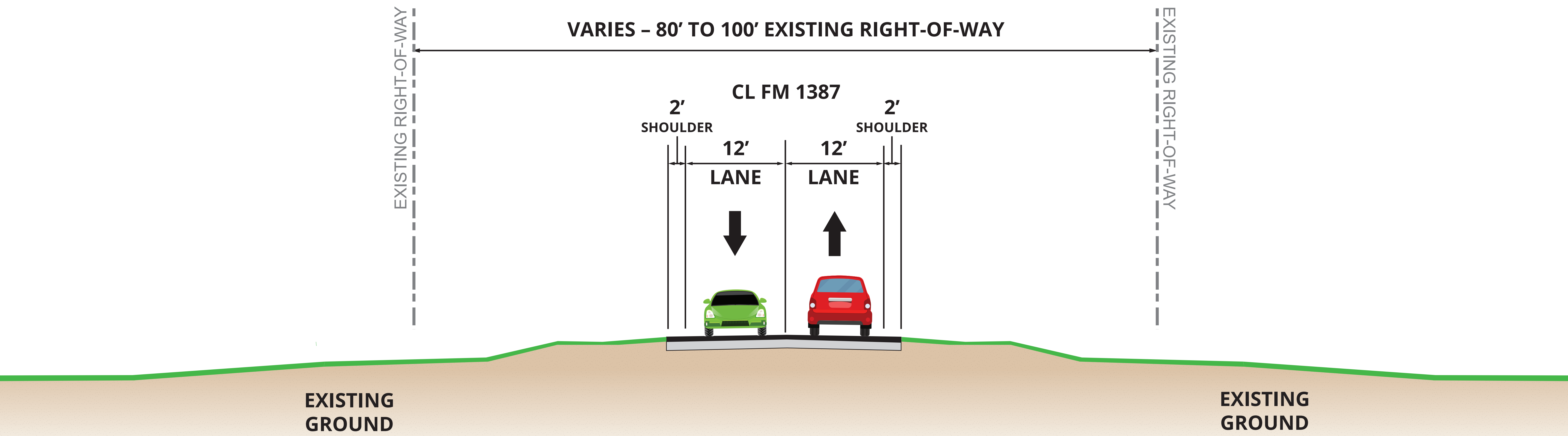




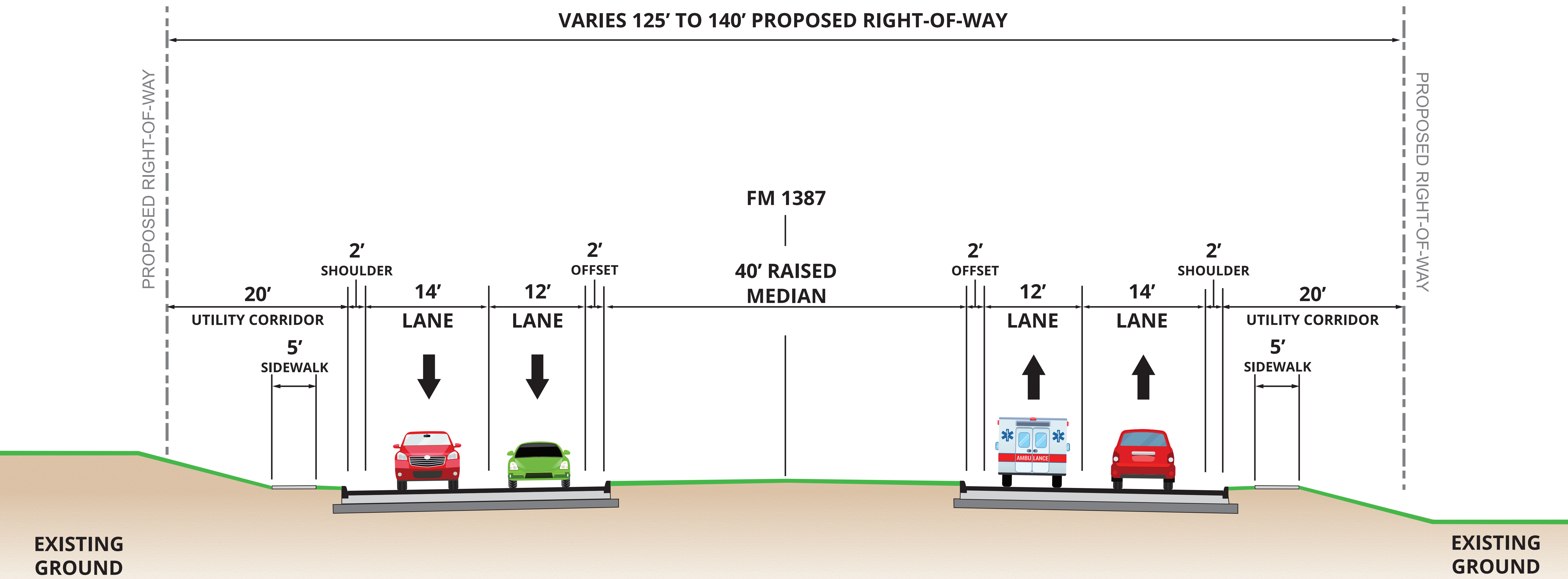
The environmental review, consultation, and other actions required by applicable Federal environmental laws for this project are being, or have been, carried-out by TxDOT pursuant to 23 U.S.C. 327 and a Memorandum of Understanding dated December 9, 2019, and executed by FHWA and TxDOT.

TYPICAL SECTIONS

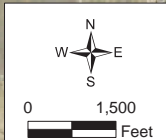
EXISTING



PROPOSED

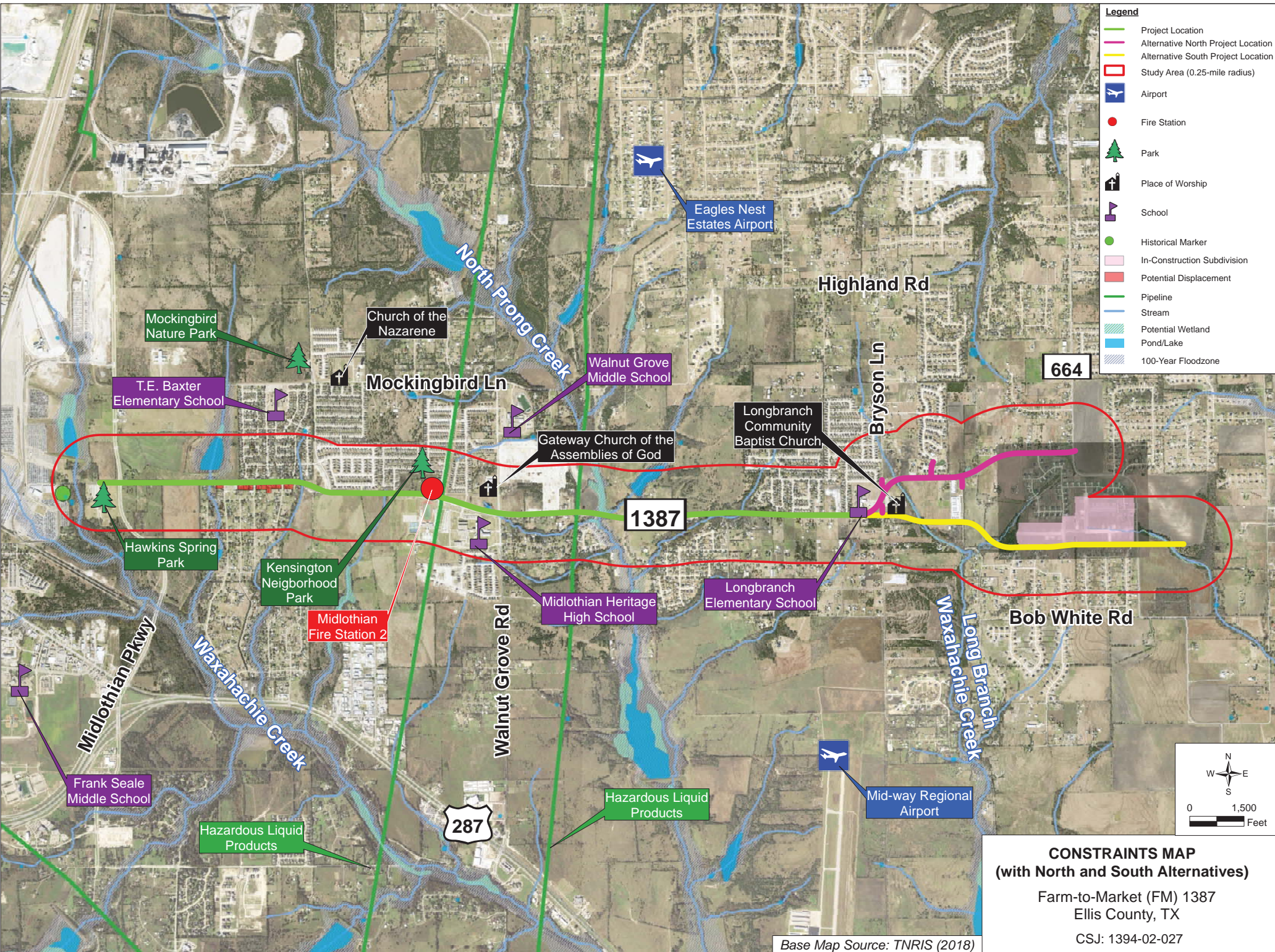


- Legend**
- Project Location
 - Alternative North Project Location
 - Alternative South Project Location
 - Study Area (0.25-mile radius)
 - Airport
 - Fire Station
 - Park
 - Place of Worship
 - School
 - Historical Marker
 - In-Construction Subdivision
 - Potential Displacement
 - Pipeline
 - Stream
 - Potential Wetland
 - Pond/Lake
 - 100-Year Floodzone

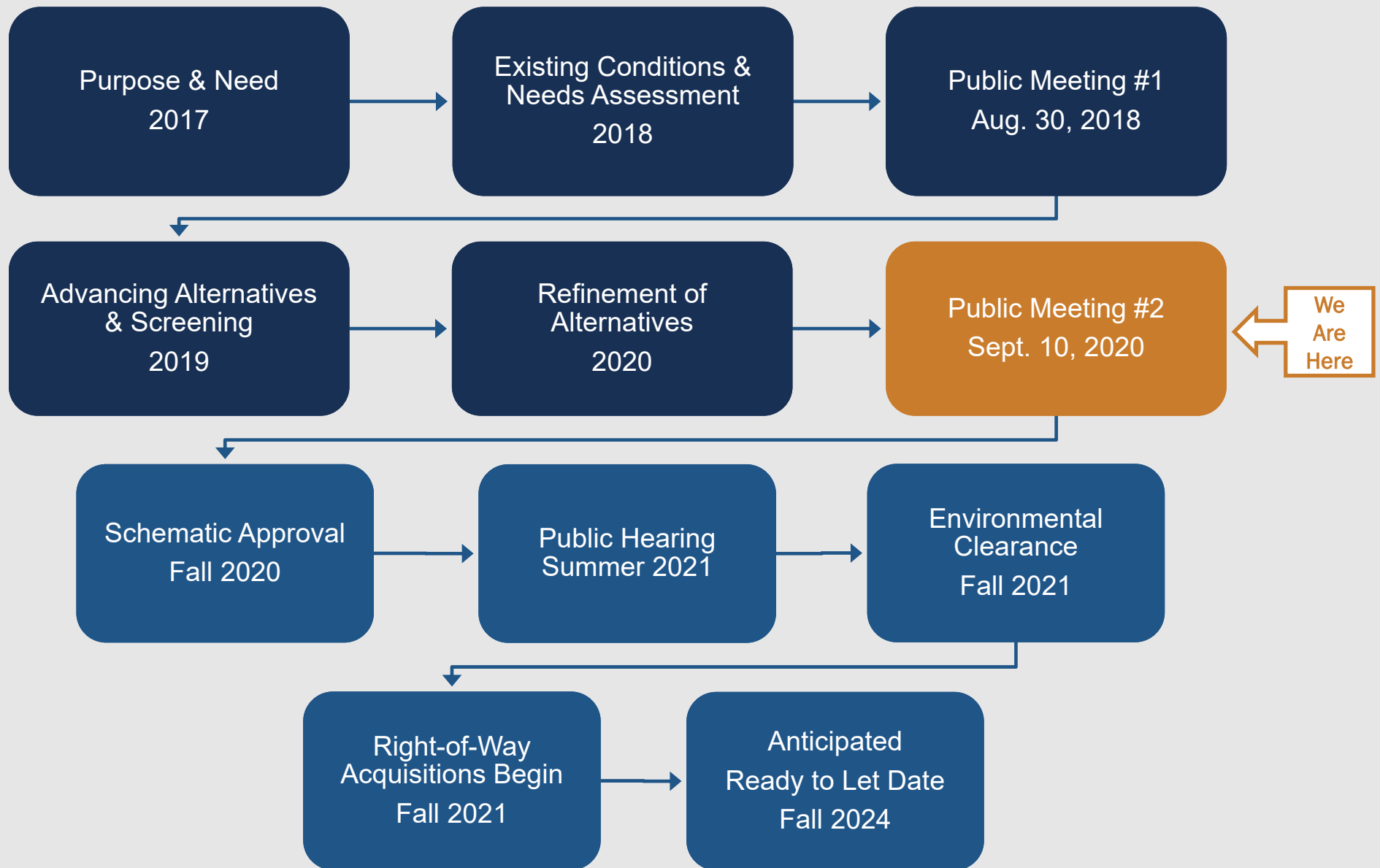


CONSTRAINTS MAP
 (with North and South Alternatives)
 Farm-to-Market (FM) 1387
 Ellis County, TX
 CSJ: 1394-02-027

Base Map Source: TNRIS (2018)



Next Steps and Timeline



We Request Your Feedback



Please submit your comments regarding the design modifications presented in this Virtual Public Meeting by using any of the four methods below by our deadline, **Sept. 25, 2020**.



Comment Online

Click the provided link on the website



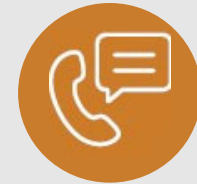
Email Us

Nelson.Underwood@txdot.gov



Mail-in Comments

TxDOT Dallas District Office
Attn: Nelson Underwood, P.E.
4777 E. Highway 80
Mesquite, TX 75150



Leave a Voicemail

(817) 381-2473

For general questions about the presentation or the project, please contact TxDOT Project Manager, Nelson Underwood, P.E. at Nelson.Underwood@txdot.gov.