



# FARM TO MARKET ROAD (FM) 455 FEASIBILITY STUDY

## From Dallas Parkway to Shady Brook Lane

Project ID: A00188517 | Collin County, Texas

### IN-PERSON PUBLIC MEETING

**WHEN:** Tuesday, April 30, 2024

5:30-7:30 p.m. (Open House Format)

**WHERE:** Jerry and Linda Moore Middle School

300 East G.A. Moore Parkway  
Celina, TX 75009

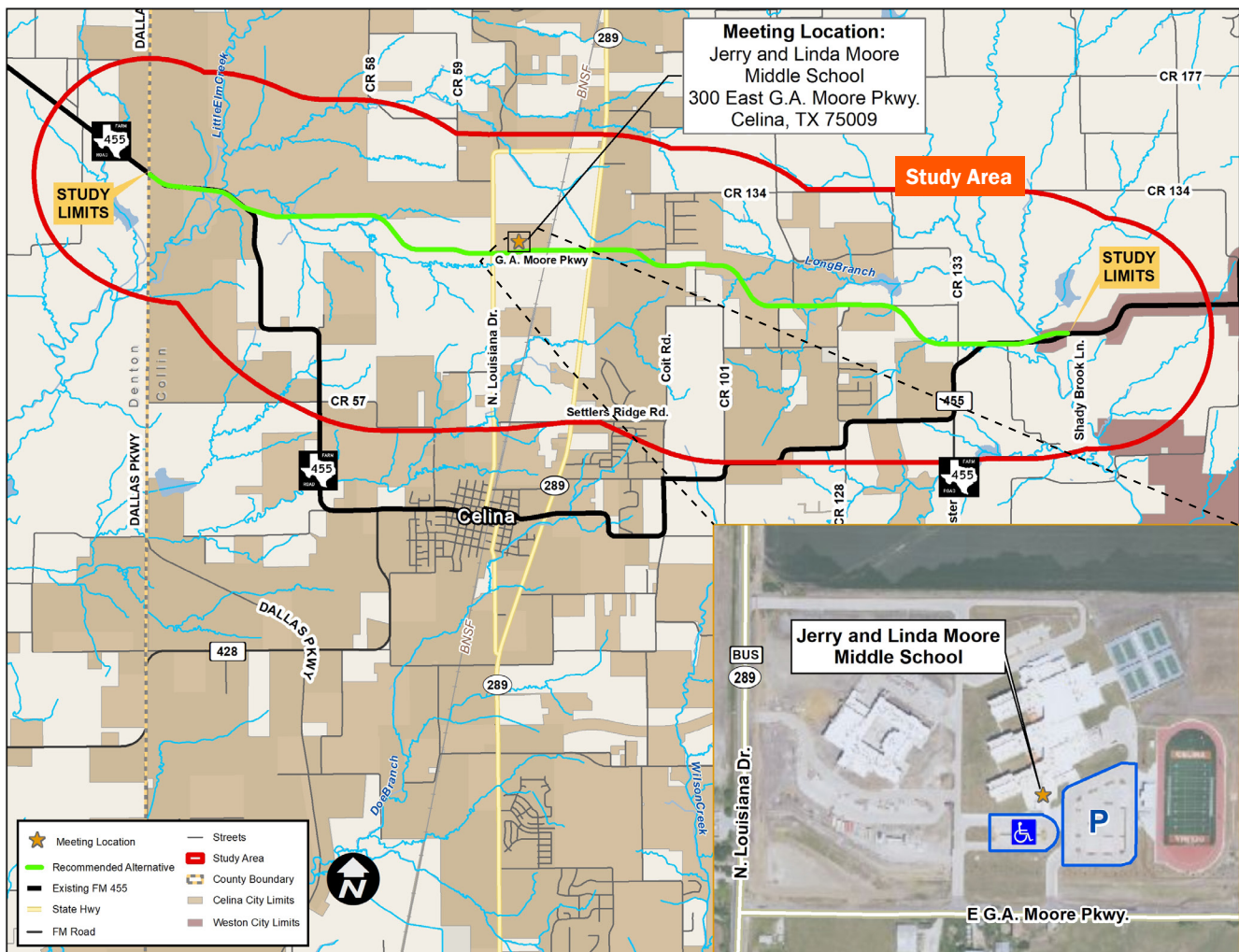


**VIRTUAL PUBLIC MEETING**  
**\*NOT A LIVE EVENT**

Scan the QR code above or visit

[www.KeepItMovingDallas.com/projects/fm-roads/fm455FS](http://www.KeepItMovingDallas.com/projects/fm-roads/fm455FS) to access the virtual public meeting.

The virtual public meeting will be available Tuesday, April 30, 2024 at 5:30 p.m. to Wednesday, May 15, 2024 at 11:59 p.m.



#### FROM NORTHBOUND PRESTON RD (SH 289)

- Take Preston Road northbound
- Turn left on G.A. Moore Parkway
- Turn right into the middle school

#### FROM SOUTHBOUND PRESTON RD (SH 289):

- Take Preston Road southbound
- Turn right on G.A. Moore Parkway
- Turn right into the middle school

#### FROM DOWNTOWN CELINA:

- Go north on Louisiana Drive (Business 289)
- Continue on Louisiana Drive for approximately 2 miles
- Turn right on G.A. Moore Parkway
- Turn left into the middle school