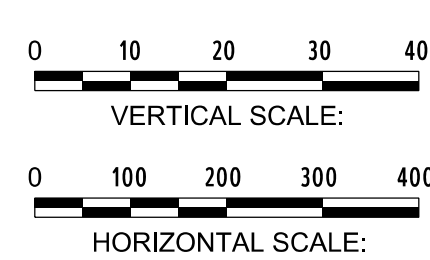
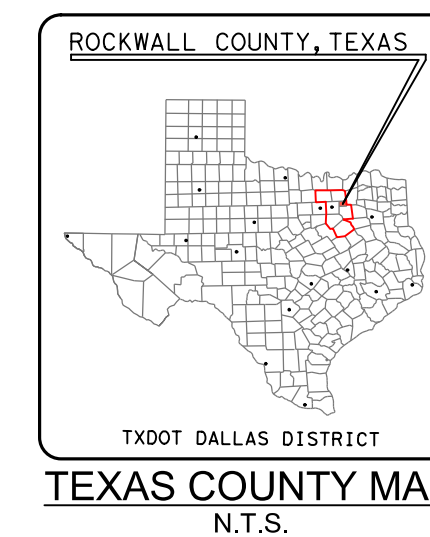
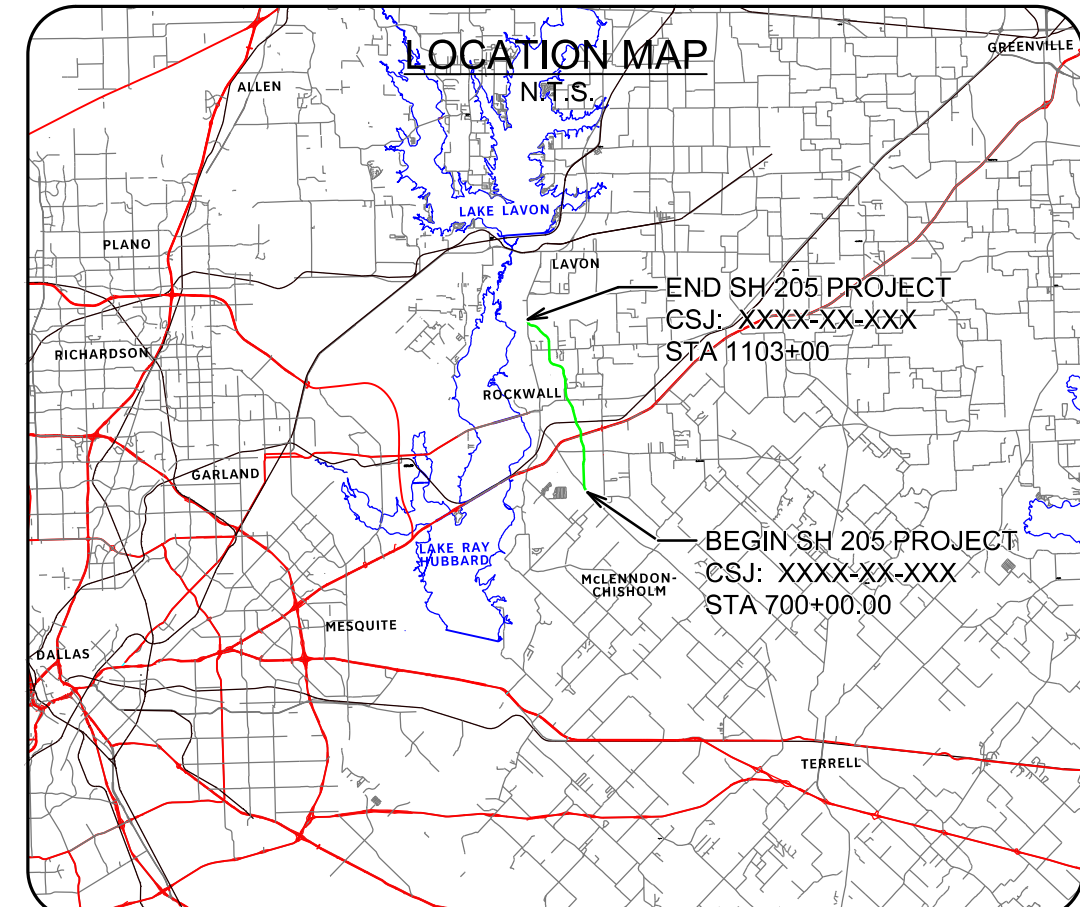


SH 205 DESIGN SCHEMATIC
FROM NORTH OF FM 549
TO NORTH OF JOHN KING BLVD
ROCKWALL COUNTY, TEXAS
CSJ: XXXX-XX-XXX

MARCH 2017
ROLL 3 OF 3

PROJECT LENGTH:	7.63 MILES
FUNCTIONAL CLASSIFICATION:	URBAN ARTERIAL
AVERAGE DAILY TRAFFIC:	TBD (2014)
DESIGN SPEED:	45 MPH



- LEGEND:
- EXISTING ROW (ESTIMATED)
 - EXISTING PROPERTY LIMITS
 - EXISTING SFT CONTOURS
 - PROPOSED SH 205 BASELINE
 - PROPOSED CROSS STREET BASELINE
 - PROPOSED ROW
 - PROPOSED RETAINING WALL
 - PROPOSED BRIDGE BENT/ABUTMENT
 - 100 YR FLOODPLAIN LIMITS
 - FLOODWAY LIMITS
 - DIRECTION OF TRAVEL
 - PROPOSED BRIDGE
 - PROPOSED PAVEMENT
 - PROPOSED SIDEWALK
 - PAVEMENT / BRIDGE TO BE REMOVED

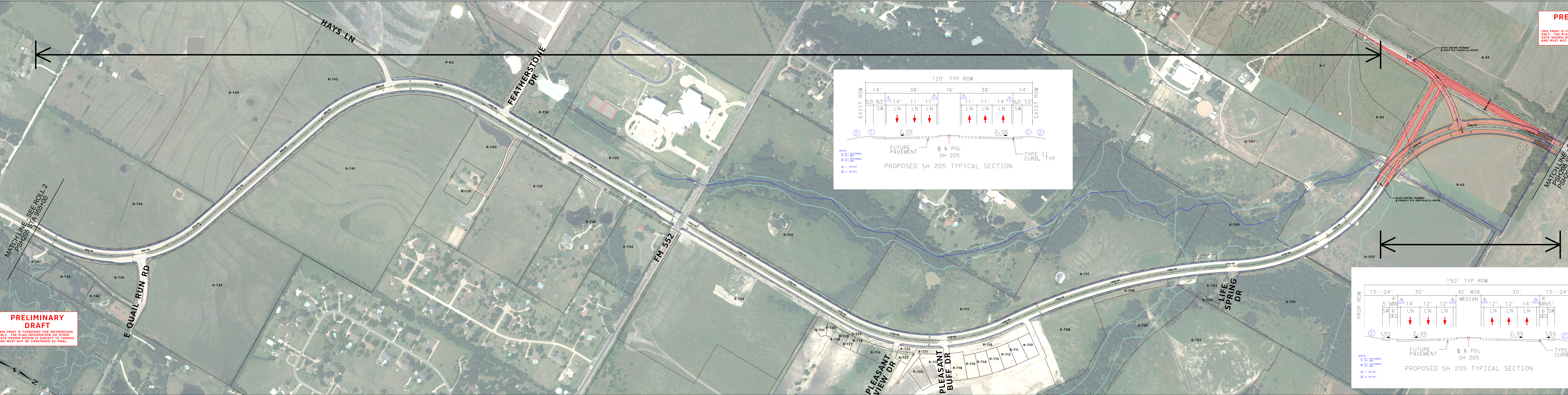
- GENERAL NOTES:
- THE SCHEMATIC LAYOUTS ARE BASED ON LIMITED FIELD SURVEY, AERIAL TOPOGRAPHY DATA WAS COLLECTED IN APRIL OF 2015.
 - PARCEL LIMITS AND OWNERSHIP INFORMATION WERE COLLECTED FROM THE KAUFMAN, ROCKWALL, AND COLLIN COUNTIES APPRAISAL DISTRICT (JUNE 2015).
 - ALL CURBS ARE TYPE II UNLESS NOTED. DIMENSIONS ARE TO EDGE OF UNCURBED PAVEMENT OR NOMINAL FACE OF RAIL/CURB/BARRIER (UNLESS NOTED).
 - SUPERELEVATION TRANSITIONS ARE LINEAR WITH THE AXIS OF ROTATION LOCATED AT THE PGL.
 - THE SPECIFIC TYPE OF BRIDGE RAIL WILL BE DETERMINED DURING PS&E DESIGN.
 - CONVENTIONAL ROADWAY SIGNAGE (SMALL SIGNS) WILL NOT BE DEVELOPED UNTIL PS&E DESIGN.
 - AVERAGE DAILY TRAFFIC VOLUME PROJECTIONS DEVELOPED BY TXDOT TP&P (MARCH 2015).
 - MAJOR INTERSECTION CURVE RADIUS ARE 50', MINOR INTERSECTION CURVE RADIUS ARE 30'+, AND DRIVEWAY INTERSECTION CURVE RADIUS ARE 15' (UNLESS NOTED OTHERWISE). DRIVEWAY LOCATIONS ARE PRELIMINARY AND WILL BE FURTHER DEVELOPED DURING PS&E DESIGN.
 - MEDIAN OPENINGS ARE PRELIMINARY AND SUBJECT TO CHANGE. FINAL MEDIAN OPENING LOCATIONS TO BE DETERMINED DURING PS&E AND IN COORDINATION WITH THE LOCAL GOVERNMENTS.
 - EXISTING PAVEMENT AND BRIDGES LOCATED WITHIN LIMITS OF PROPOSED RECONSTRUCTION WILL BE REMOVED (UNLESS NOTED OTHERWISE).
 - APPROXIMATE 100 YEAR FLOOD PLAIN LIMITS ARE BASED UPON FEMA FLOOD INSURANCE RATE MAPS DATED AUGUST 2015.
 - EXISTING CULVERT LOCATIONS, SIZE, AND ELEVATIONS OBTAINED FROM RECORD DOCUMENTS AND ARE SHOWN FOR INFORMATIONAL PURPOSES ONLY.
 - CONSTRUCTION OF DRIVEWAYS OUTSIDE OF EXISTING AND PROPOSED RIGHT OF WAY SHALL REQUIRE CONSTRUCTION LICENSE AGREEMENT.

PARCEL DATA

Parcel ID	Owner's Name	Parcel Address
R-730	STONE CREEK LLC	1401 HAYS RD
R-731	RED RIVER ESTATES	1401 HAYS RD
R-732	R.B. & MARGIE INVESTMENTS LP	JOHN KING BLVD
R-733	R.B. & MARGIE INVESTMENTS LP	JOHN KING BLVD
R-734	R.B. & MARGIE INVESTMENTS LP	JOHN KING BLVD
R-735	R.B. & MARGIE INVESTMENTS LP	JOHN KING BLVD
R-736	R.B. & MARGIE INVESTMENTS LP	JOHN KING BLVD
R-737	R.B. & MARGIE INVESTMENTS LP	JOHN KING BLVD
R-738	R.B. & MARGIE INVESTMENTS LP	JOHN KING BLVD
R-739	R.B. & MARGIE INVESTMENTS LP	JOHN KING BLVD
R-740	R.B. & MARGIE INVESTMENTS LP	JOHN KING BLVD
R-741	R.B. & MARGIE INVESTMENTS LP	JOHN KING BLVD
R-742	R.B. & MARGIE INVESTMENTS LP	JOHN KING BLVD
R-743	R.B. & MARGIE INVESTMENTS LP	JOHN KING BLVD
R-744	R.B. & MARGIE INVESTMENTS LP	JOHN KING BLVD
R-745	R.B. & MARGIE INVESTMENTS LP	JOHN KING BLVD
R-746	R.B. & MARGIE INVESTMENTS LP	JOHN KING BLVD
R-747	R.B. & MARGIE INVESTMENTS LP	JOHN KING BLVD
R-748	R.B. & MARGIE INVESTMENTS LP	JOHN KING BLVD
R-749	R.B. & MARGIE INVESTMENTS LP	JOHN KING BLVD
R-750	R.B. & MARGIE INVESTMENTS LP	JOHN KING BLVD
R-751	R.B. & MARGIE INVESTMENTS LP	JOHN KING BLVD
R-752	R.B. & MARGIE INVESTMENTS LP	JOHN KING BLVD
R-753	R.B. & MARGIE INVESTMENTS LP	JOHN KING BLVD
R-754	R.B. & MARGIE INVESTMENTS LP	JOHN KING BLVD
R-755	R.B. & MARGIE INVESTMENTS LP	JOHN KING BLVD
R-756	R.B. & MARGIE INVESTMENTS LP	JOHN KING BLVD
R-757	R.B. & MARGIE INVESTMENTS LP	JOHN KING BLVD
R-758	R.B. & MARGIE INVESTMENTS LP	JOHN KING BLVD
R-759	R.B. & MARGIE INVESTMENTS LP	JOHN KING BLVD
R-760	R.B. & MARGIE INVESTMENTS LP	JOHN KING BLVD
R-761	R.B. & MARGIE INVESTMENTS LP	JOHN KING BLVD
R-762	R.B. & MARGIE INVESTMENTS LP	JOHN KING BLVD
R-763	R.B. & MARGIE INVESTMENTS LP	JOHN KING BLVD
R-764	R.B. & MARGIE INVESTMENTS LP	JOHN KING BLVD

Parcel ID	Owner's Name	Parcel Address
R-765	STONE CREEK LLC	1401 HAYS RD
R-766	RED RIVER ESTATES	1401 HAYS RD
R-767	R.B. & MARGIE INVESTMENTS LP	JOHN KING BLVD
R-768	R.B. & MARGIE INVESTMENTS LP	JOHN KING BLVD
R-769	R.B. & MARGIE INVESTMENTS LP	JOHN KING BLVD
R-770	R.B. & MARGIE INVESTMENTS LP	JOHN KING BLVD
R-771	R.B. & MARGIE INVESTMENTS LP	JOHN KING BLVD
R-772	R.B. & MARGIE INVESTMENTS LP	JOHN KING BLVD
R-773	R.B. & MARGIE INVESTMENTS LP	JOHN KING BLVD
R-774	R.B. & MARGIE INVESTMENTS LP	JOHN KING BLVD
R-775	R.B. & MARGIE INVESTMENTS LP	JOHN KING BLVD
R-776	R.B. & MARGIE INVESTMENTS LP	JOHN KING BLVD
R-777	R.B. & MARGIE INVESTMENTS LP	JOHN KING BLVD
R-778	R.B. & MARGIE INVESTMENTS LP	JOHN KING BLVD
R-779	R.B. & MARGIE INVESTMENTS LP	JOHN KING BLVD
R-780	R.B. & MARGIE INVESTMENTS LP	JOHN KING BLVD
R-781	R.B. & MARGIE INVESTMENTS LP	JOHN KING BLVD
R-782	R.B. & MARGIE INVESTMENTS LP	JOHN KING BLVD
R-783	R.B. & MARGIE INVESTMENTS LP	JOHN KING BLVD
R-784	R.B. & MARGIE INVESTMENTS LP	JOHN KING BLVD
R-785	R.B. & MARGIE INVESTMENTS LP	JOHN KING BLVD
R-786	R.B. & MARGIE INVESTMENTS LP	JOHN KING BLVD
R-787	R.B. & MARGIE INVESTMENTS LP	JOHN KING BLVD
R-788	R.B. & MARGIE INVESTMENTS LP	JOHN KING BLVD
R-789	R.B. & MARGIE INVESTMENTS LP	JOHN KING BLVD
R-790	R.B. & MARGIE INVESTMENTS LP	JOHN KING BLVD
R-791	R.B. & MARGIE INVESTMENTS LP	JOHN KING BLVD
R-792	R.B. & MARGIE INVESTMENTS LP	JOHN KING BLVD
R-793	R.B. & MARGIE INVESTMENTS LP	JOHN KING BLVD
R-794	R.B. & MARGIE INVESTMENTS LP	JOHN KING BLVD

PRELIMINARY
DRAFT
THIS PRINT IS FURNISHED FOR INFORMATION ONLY. THE PLAN INFORMATION OR OTHER DATA SHOWN HEREIN IS SUBJECT TO CHANGE AND MUST NOT BE CONSTRUED AS FINAL.



PRELIMINARY
DRAFT
THIS PRINT IS FURNISHED FOR INFORMATION ONLY. THE PLAN INFORMATION OR OTHER DATA SHOWN HEREIN IS SUBJECT TO CHANGE AND MUST NOT BE CONSTRUED AS FINAL.

SH 205 DESIGN SCHEMATIC
FROM NORTH OF FM 549
TO NORTH OF JOHN KING BLVD
ROCKWALL COUNTY, TEXAS
CSJ: XXXX-XX-XXX

MARCH 2017
ROLL 3 OF 3

PROJECT LENGTH:	7.63 MILES
FUNCTIONAL CLASSIFICATION:	URBAN ARTERIAL
AVERAGE DAILY TRAFFIC:	TBD (2014)
DESIGN SPEED:	45 MPH

