

YOU'RE INVITED!

Farm-to-Market (FM) 6 Public Hearing

Thursday, May 9, 2024

5:30 PM to 7:30 PM (Open House)

Presentation at 6 p.m.

Leland Edge Middle School Cafeteria
620 North FM 1138, Nevada, TX 75173

IN-PERSON PUBLIC HEARING

The in-person hearing will be held in an open house format with one formal presentation at 6 p.m. Representatives from TxDOT and project consultants will be available to answer questions about the project.

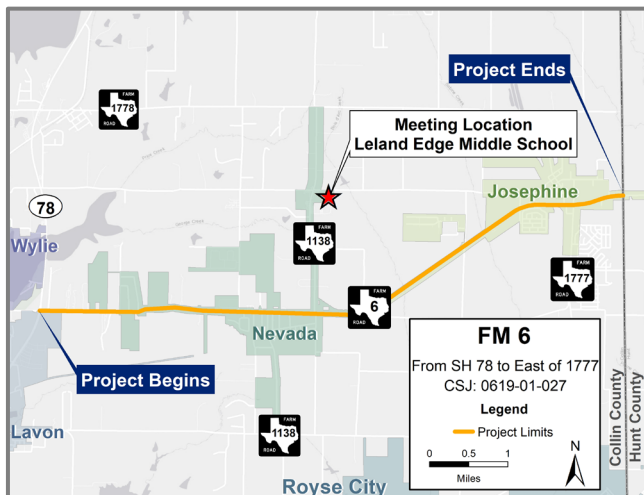
VIRTUAL PUBLIC HEARING

The Virtual Public Hearing can be viewed at any time beginning Thursday, May 9, 2024, at 5:30 pm through Friday, May 24, 2024, at 11:59 pm. **The same information will be available at the in-person and virtual hearing.** You can access the Virtual Public Hearing by scanning the QR code on this page using a phone or tablet or visiting: www.keepitmovingdallas.com/projects/fm-roads/fm6.

DIRECTIONS TO THE IN-PERSON PUBLIC HEARING


From the South: Head North on FM 1138 from FM 6 and Leland Edge Middle School will be on your right.


From the North: Head South on FM 1138 from CR 596 and Leland Edge Middle School will be on your left.



TxDOT.gov | Keyword(s): "FM 6"

Questions or Comments

 Kibru Andargie, P.E.

 214.320.6244

 Kibru.Andargie@TxDOT.gov

