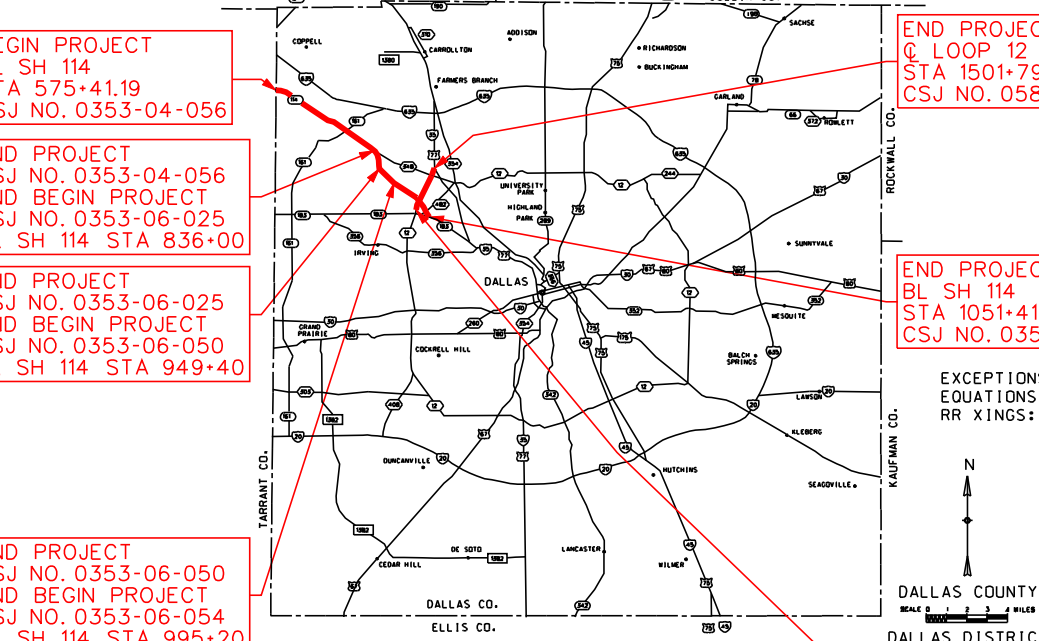


WILLIAM L. HALE, P.E. DISTRICT ENGINEER  
DESIGN SCHEMATIC  
SH 114  
FROM: 1.236 MI E OF INTERNATIONAL PKY  
TO: SH 183  
NET LENGTH OF PROJECT = 11.63 MI  
CSJ: 0353-04-056 FROM 1.236 MI E OF INTERNATIONAL PKY TO SPUR 348  
CSJ: 0353-04-084 U-TURN AT SH 161  
CSJ: 0353-06-025 FROM SPUR 348 TO 0.087 MILES EAST OF ROCHELLE  
CSJ: 0353-06-050 FROM 0.087 MI E OF ROCHELLE TO 0.203 MI W OF TOM BRANIFF  
CSJ: 0353-06-054 FROM 0.203 MI W OF TOM BRANIFF TO SH 183  
CSJ: 0581-02-121 FROM TEXAS PLAZA TO LP 12/1H-35E SPLIT

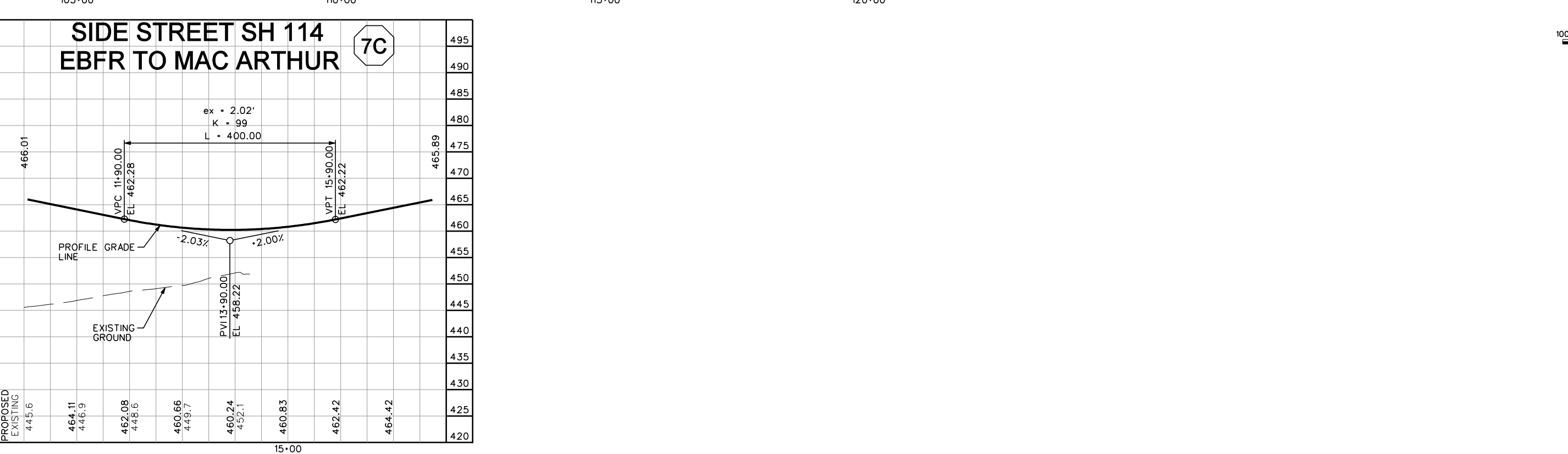
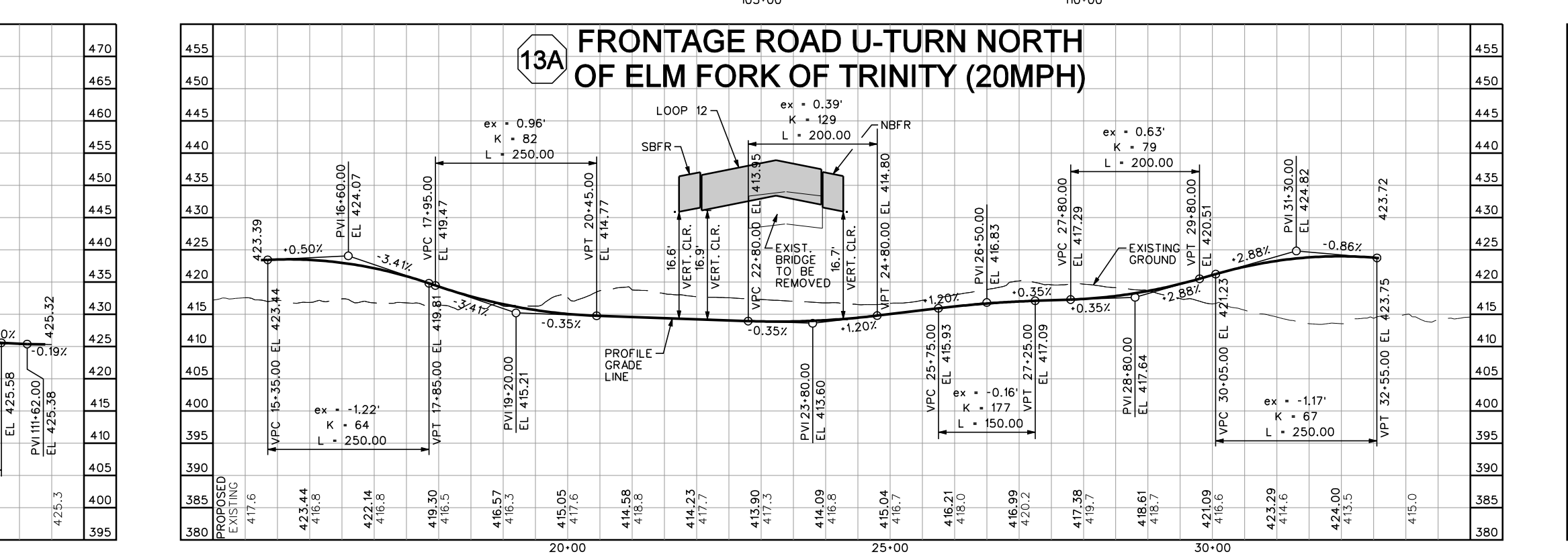
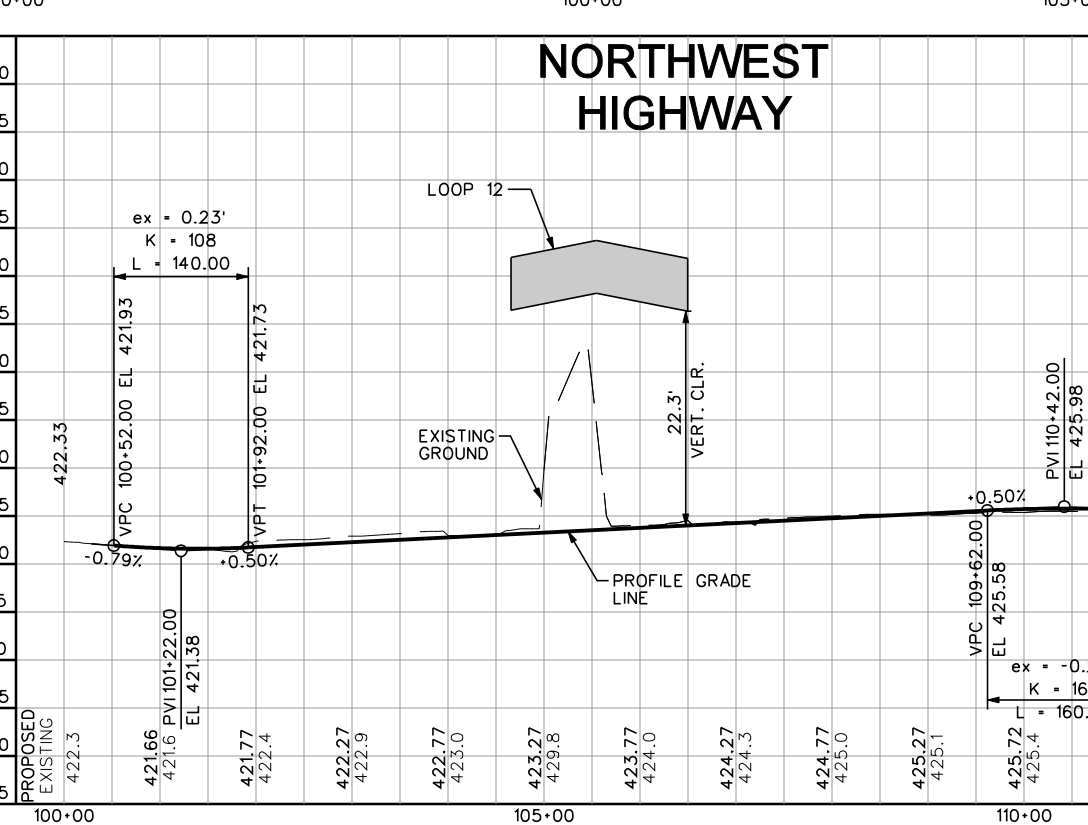
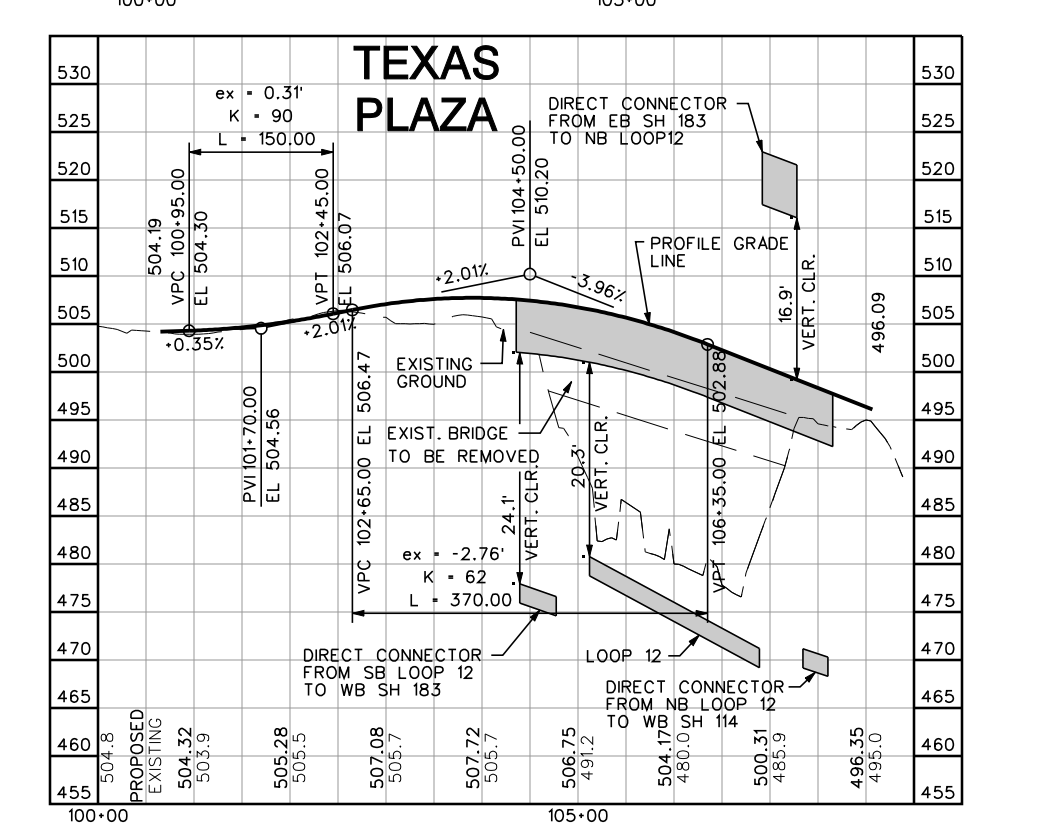
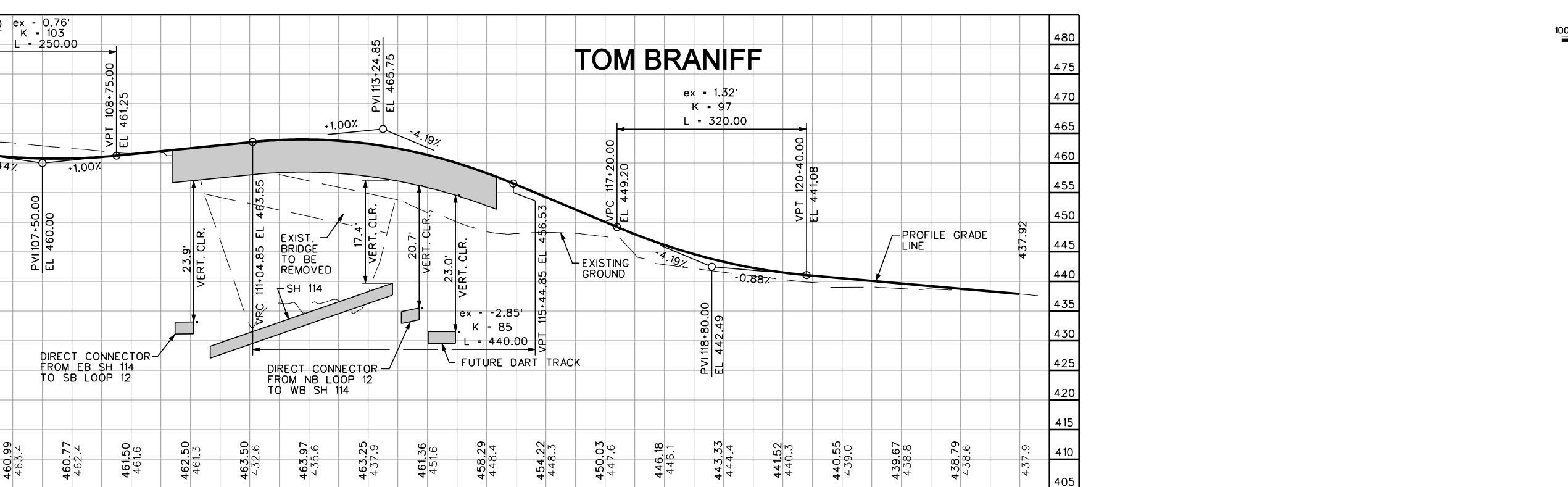
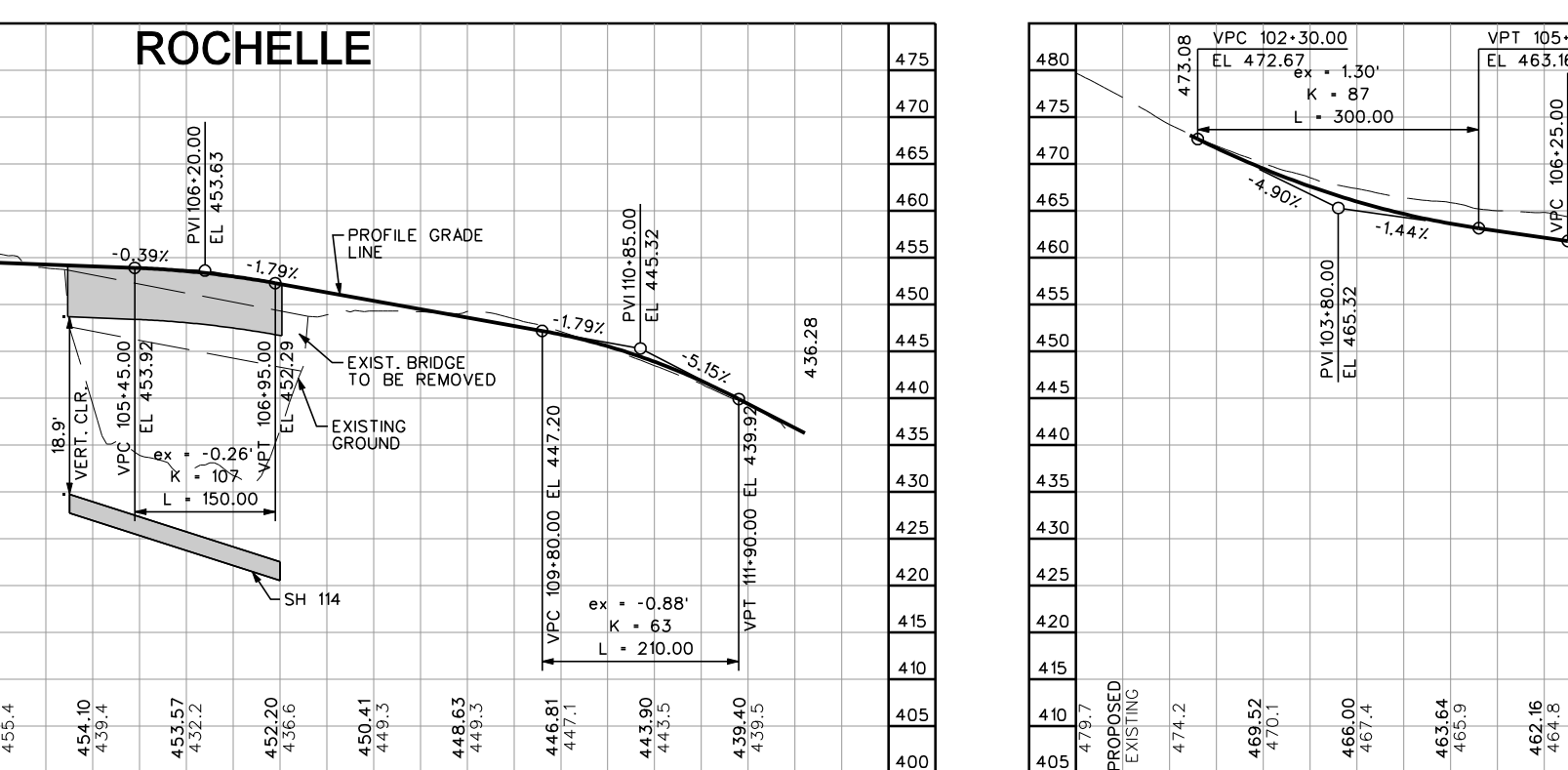
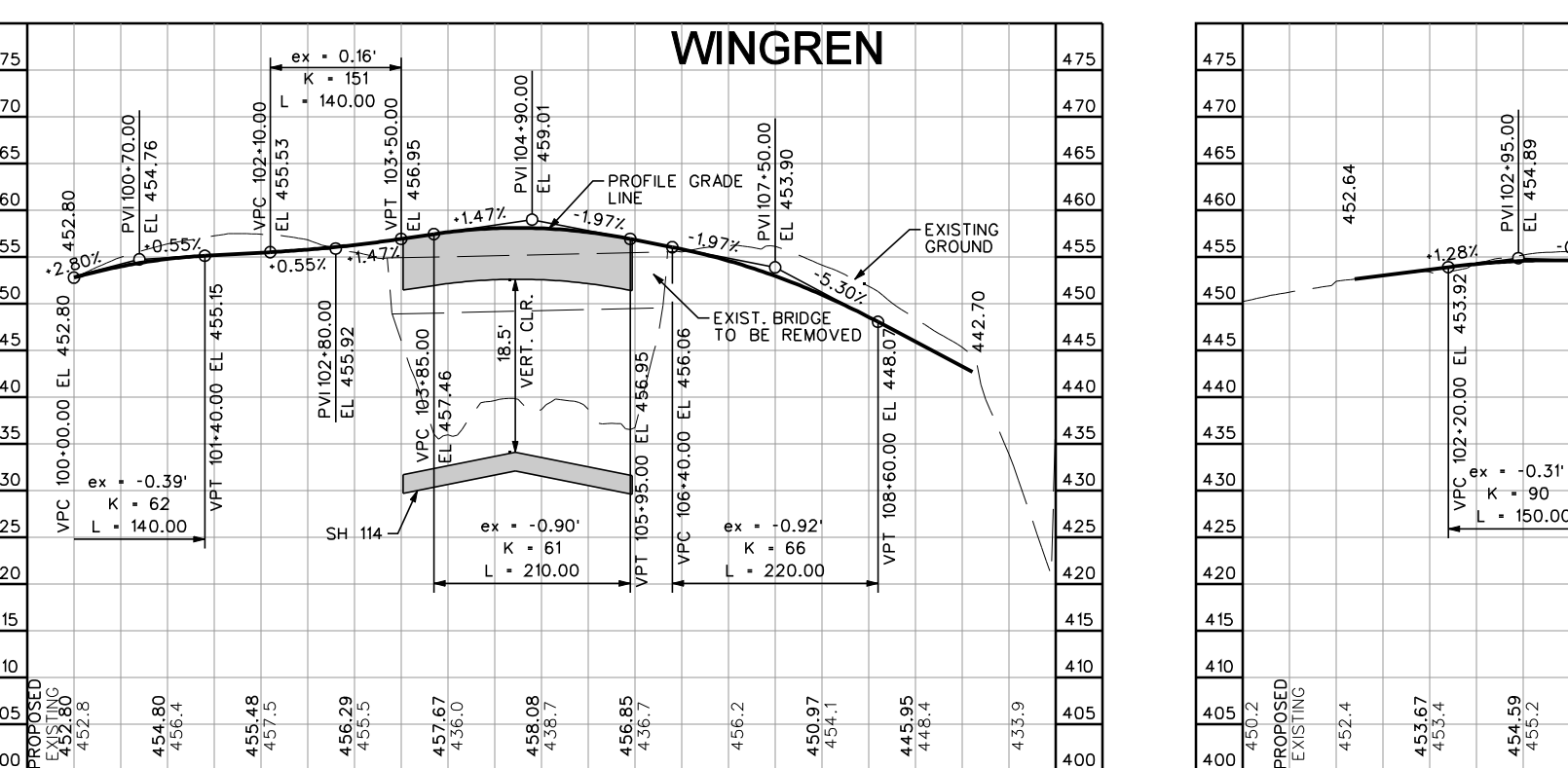
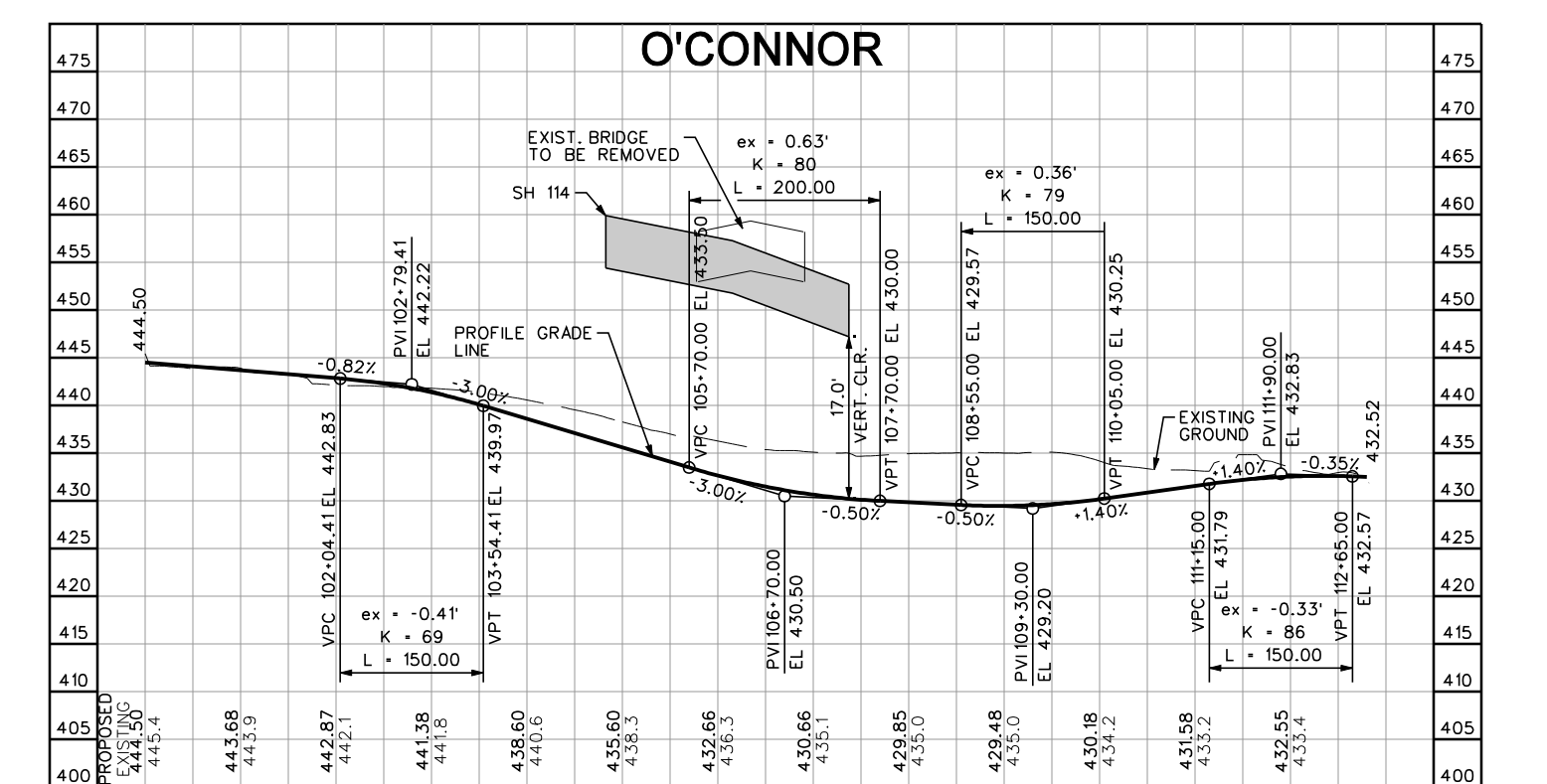
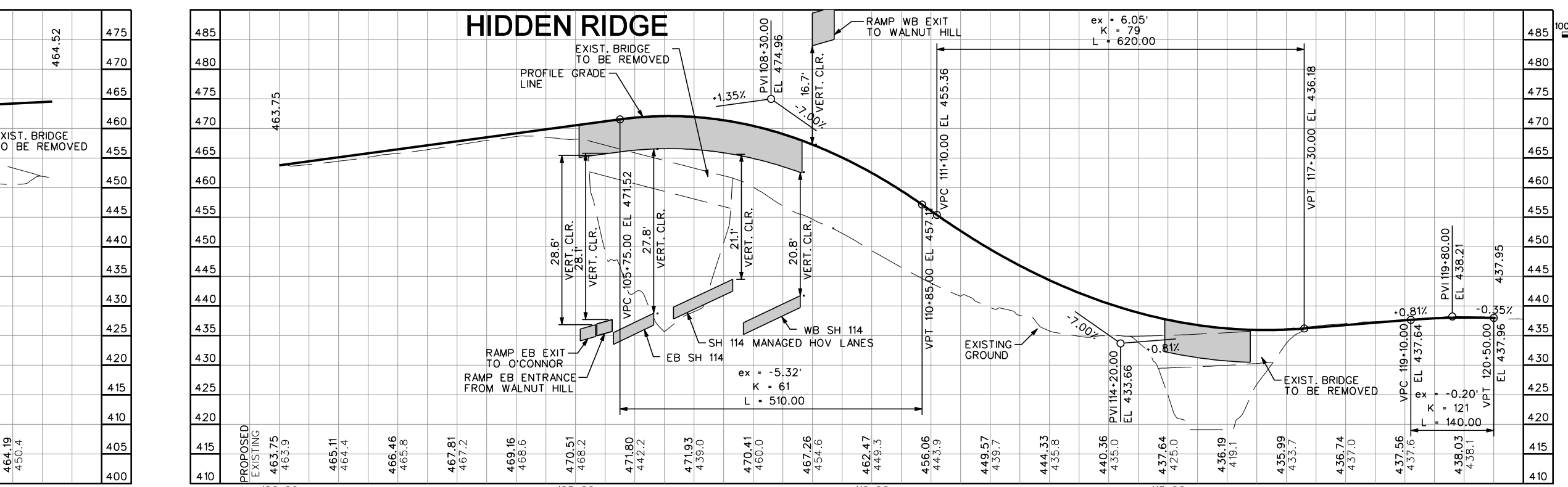
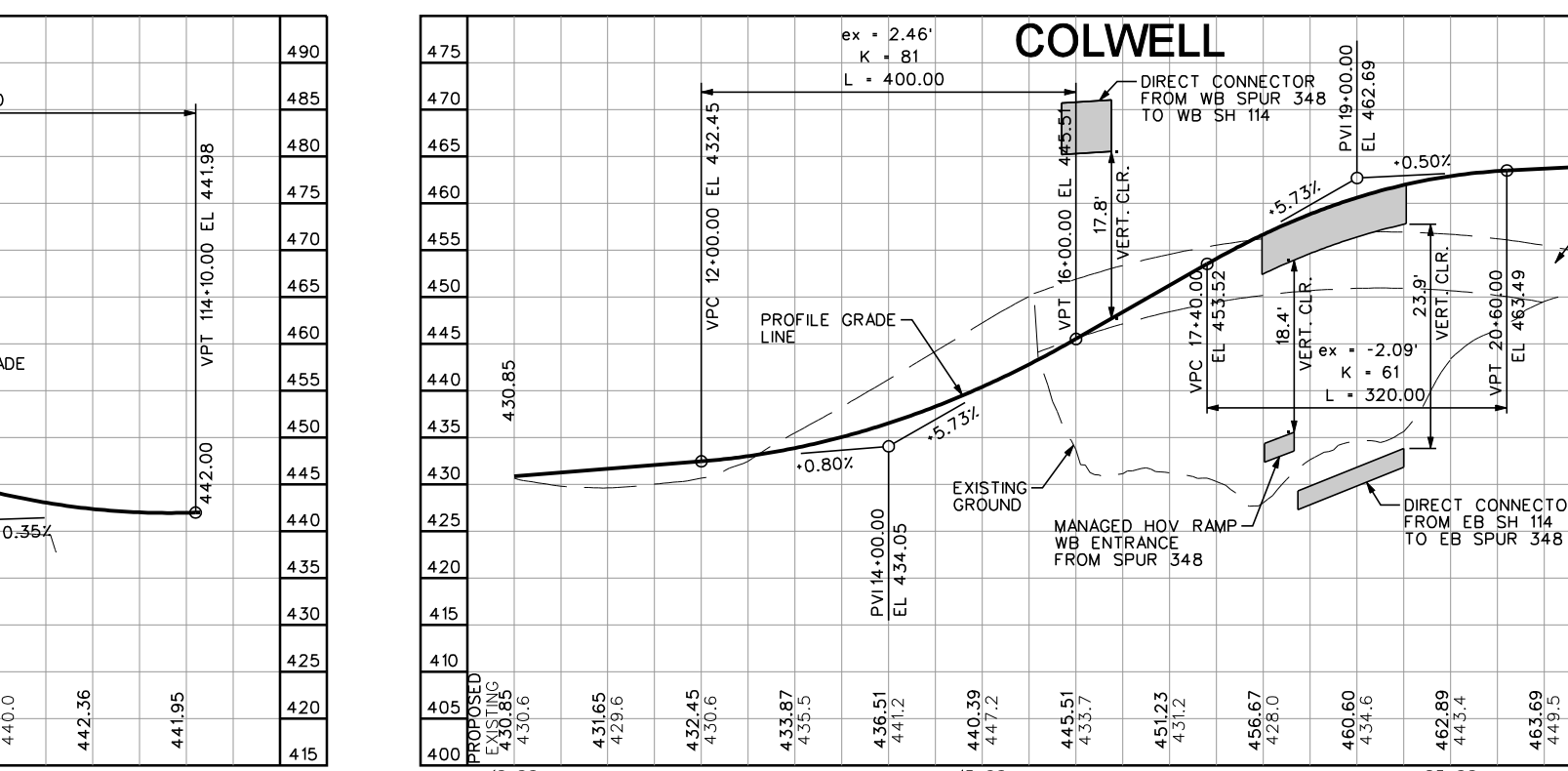
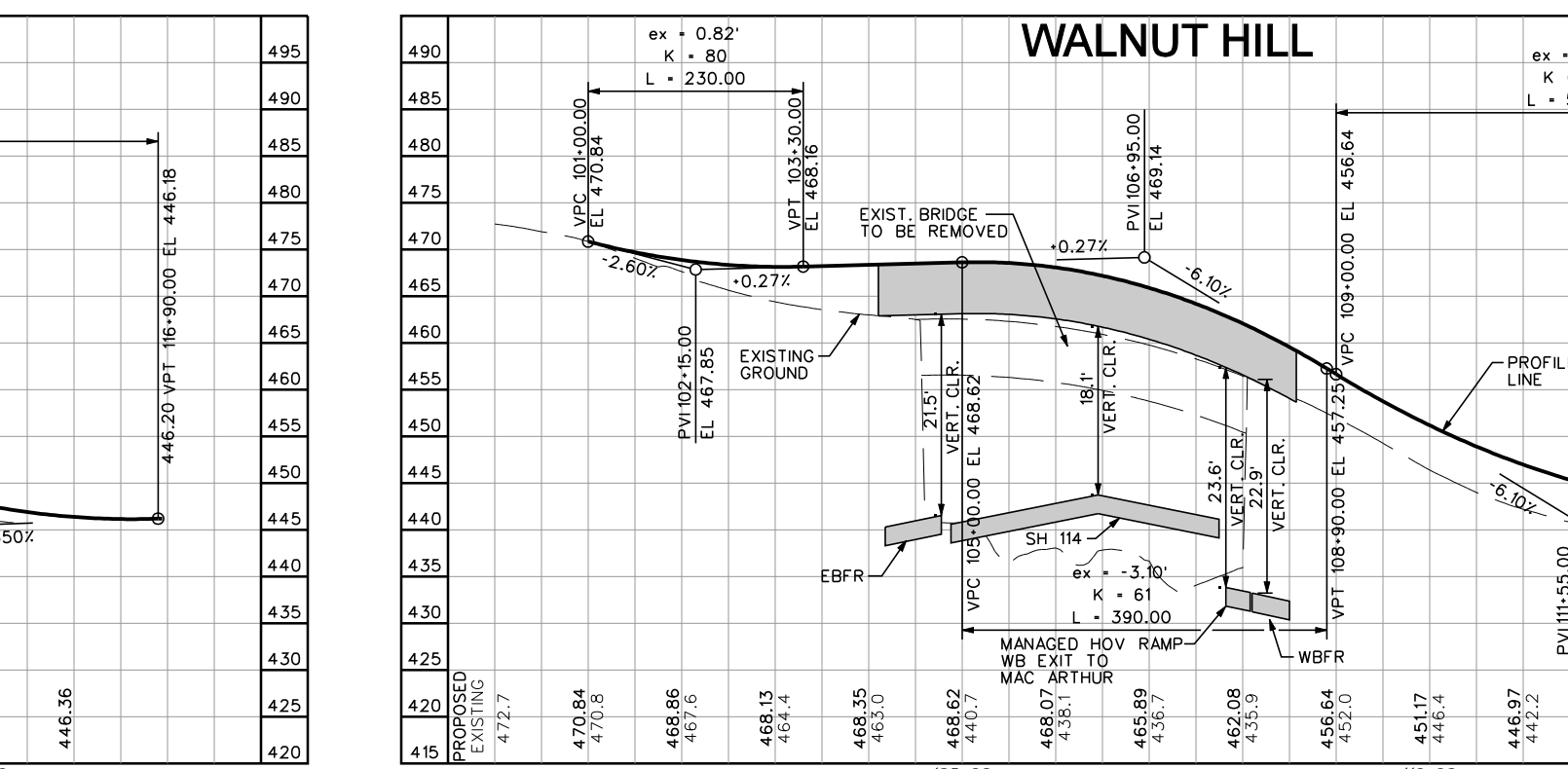
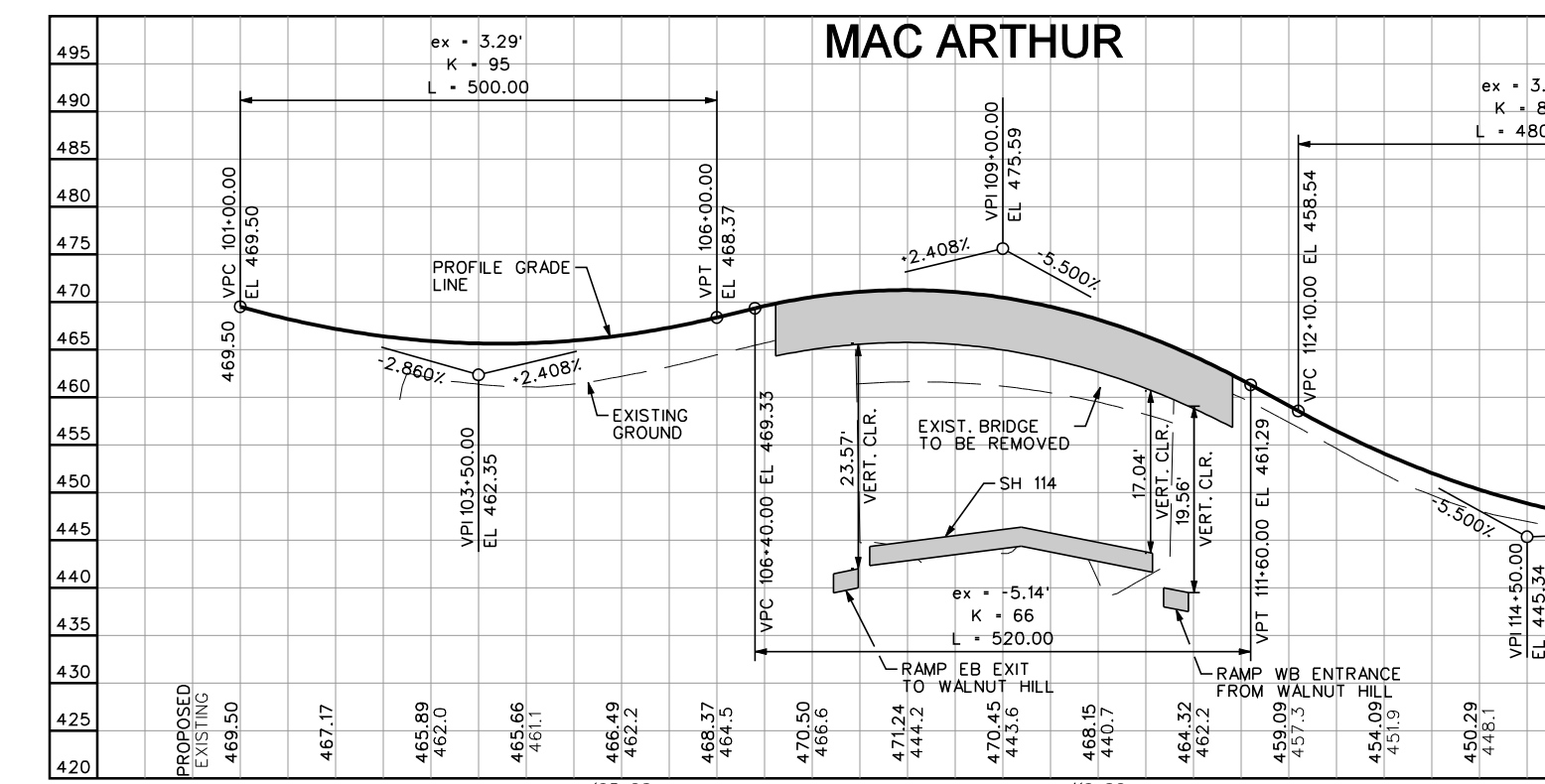
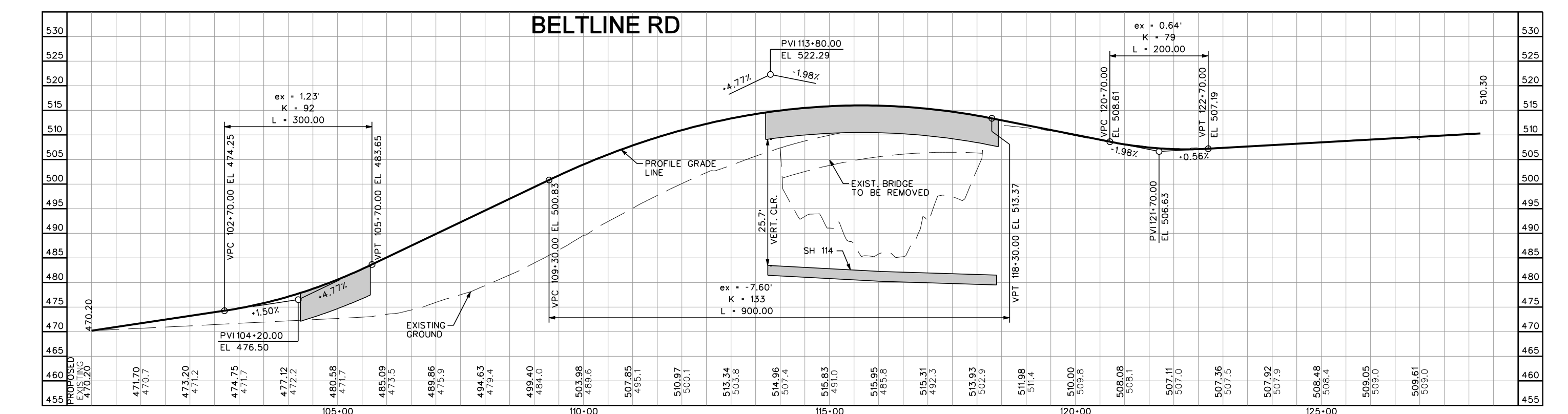
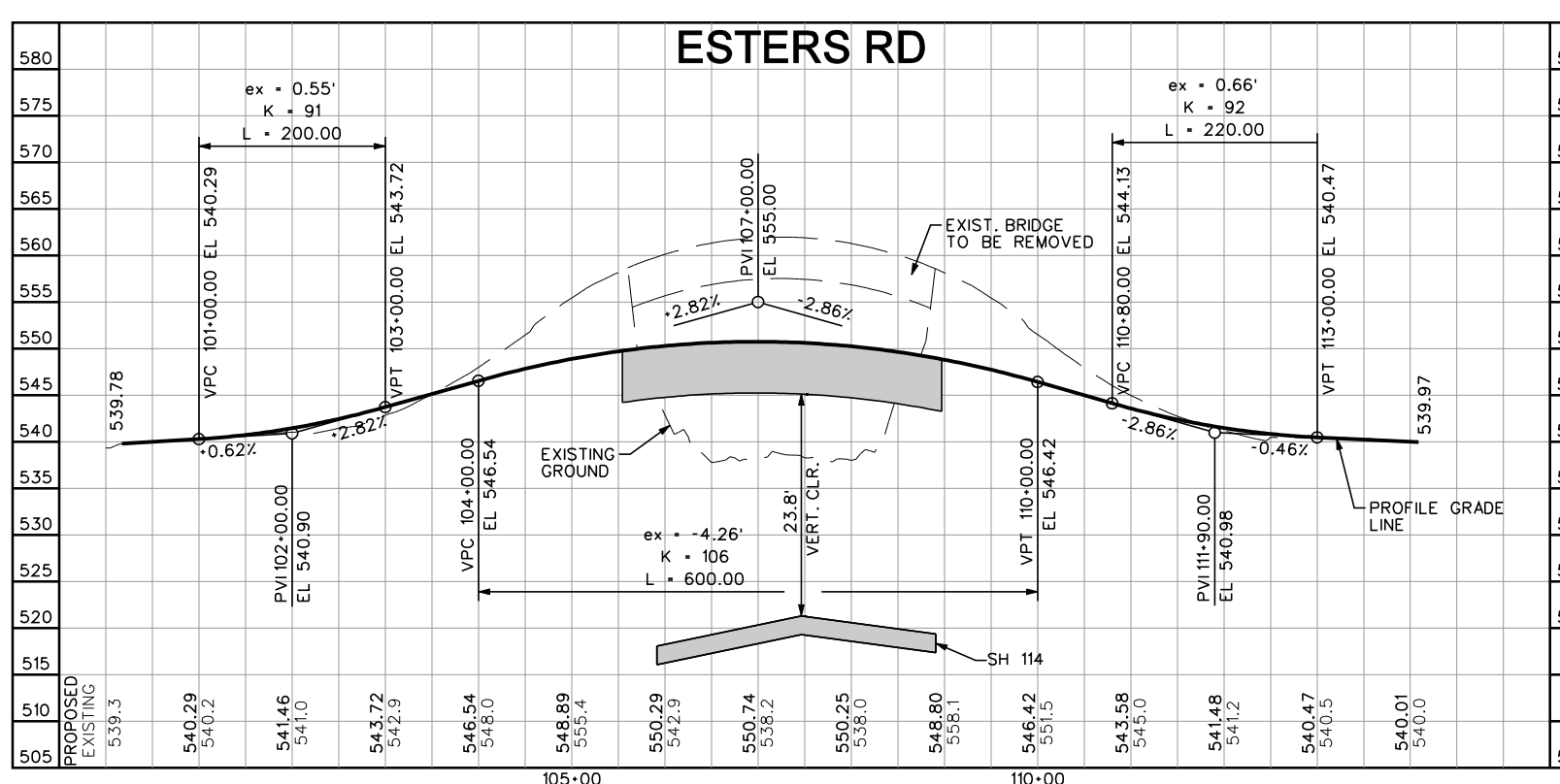
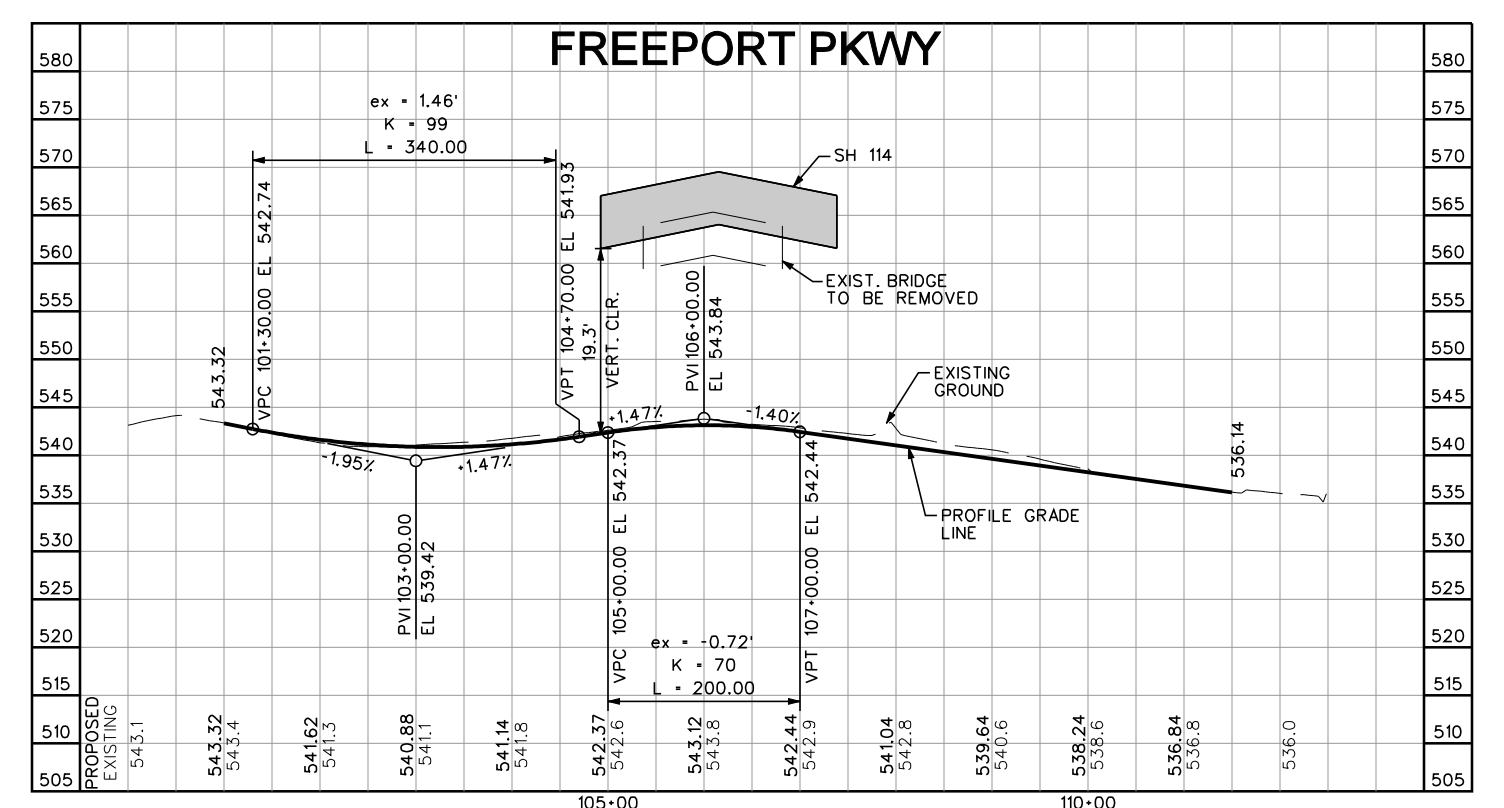
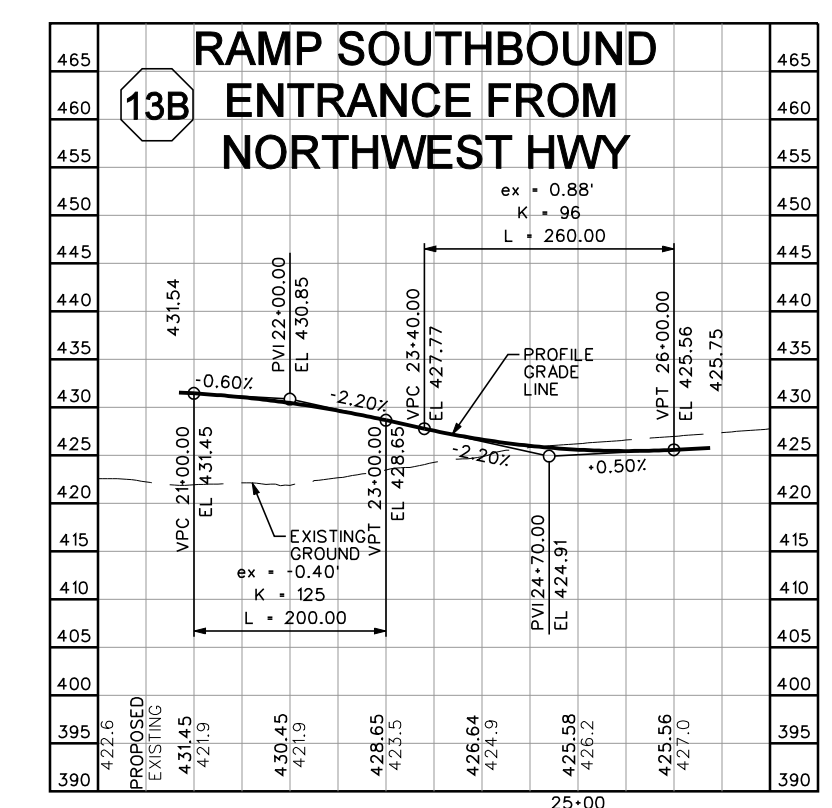
Dallas County  
HIGHWAY CLASSIFICATION  
URBAN FREEWAY  
MAY 2009  
Design Speeds  
MAIN LINES = 70 MPH  
RAMP = 50 MPH  
DIRECT CONNECTORS = 50 MPH  
FRONTAGE ROADS = 45 MPH  
CROSS STREETS = 45 MPH  
MANAGED HOV LANES = 70 MPH (MAIN LINES), 50 MPH (RAMPS)  
U-TURN (LOOP 12) = 20 MPH  
Average Daily Traffic 2008 (2028)  
SH 121 TO SH 161: 149,400 (224,200)  
SH 161 TO SH 348: 154,000 (231,000)  
SPUR 348 TO LOOP 12: 147,300 (221,000)  
LOOP 12 TO SH 183: 116,700 (175,000)  
HIGHWAY VOLUMES INCLUDE MAIN AND MANAGED HOV LANES ONLY  
SOURCE: NORTH CENTRAL TEXAS COUNCIL OF GOVERNMENTS  
ROLLS 1-10: SH 114 PLAN AND PROFILE  
ROLLS 11-12: LOOP 12 PLAN AND PROFILE  
ROLLS 13-23: SH 114 AND LOOP 12 PROFILES



© 2009 BY TEXAS DEPARTMENT OF TRANSPORTATION. ALL RIGHTS RESERVED.  
DART CITY OF IRVING

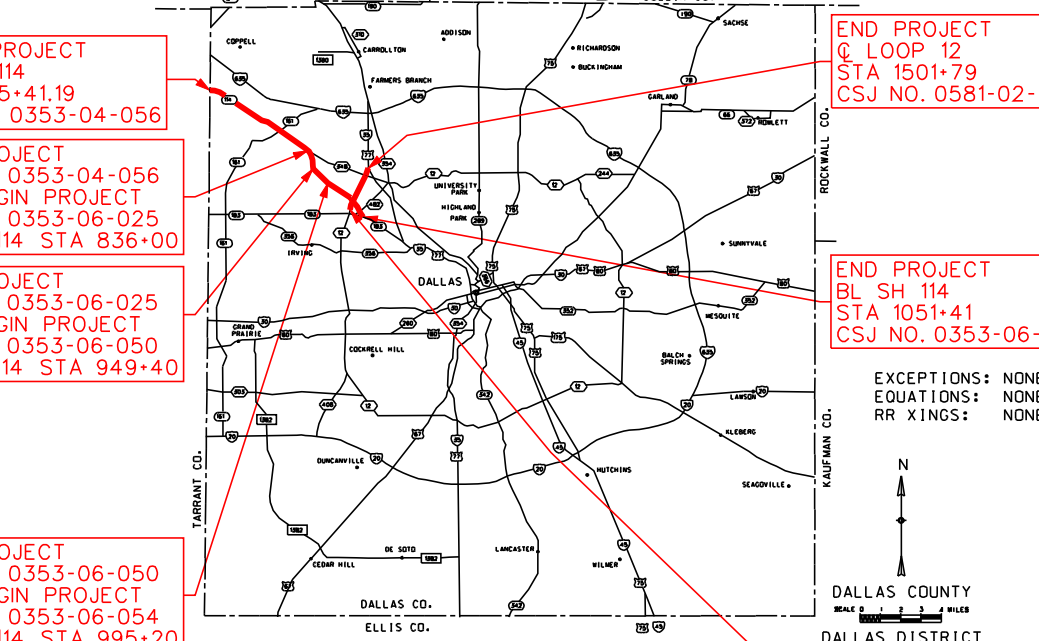
PREPARED BY BRIDGEFARMER & ASSOCIATES, INC. UNDER THE SUPERVISION OF  
STERLING C. FORSYTHE, III SHAHRIAR AZAD WEIYH TEE  
P.E. NO. 57339 DATE: 05/11/09 P.E. NO. 91682 DATE: 05/11/09 P.E. NO. 98478 DATE: 05/11/09  
BRIDGEFARMER & ASSOCIATES, INC. CONSULTING ENGINEERS  
12801 NORTH CENTRAL EXPRESSWAY, 4TH FLOOR  
DALLAS, TEXAS 75243  
TEL: (972) 231-8800 FAX: (972) 231-5900  
Roll: 22 of 23  
DATE APPROVED DATE SUBMITTED

DESIGN SCHEMATIC NOT INTENDED FOR CONSTRUCTION, BIDDING, OR PERMIT PURPOSES.  
DATE REVISD



WILLIAM L. HALE, P.E. DISTRICT ENGINEER  
DESIGN SCHEMATIC  
SH 114  
FROM: 1.236 MI E OF INTERNATIONAL PKY  
TO: SH 183  
NET LENGTH OF PROJECT = 11.63 MI  
CSJ: 0353-04-056 FROM 1.236 MI E OF INTERNATIONAL PKY TO SPUR 348  
CSJ: 0353-04-084 U-TURN AT SH 161  
CSJ: 0353-06-025 FROM SPUR 348 TO 0.087 MILES EAST OF ROCHELLE  
CSJ: 0353-06-050 FROM 0.087 MI E OF ROCHELLE TO 0.203 MI W OF TOM BRANIFF  
CSJ: 0353-06-054 FROM 0.203 MI W OF TOM BRANIFF TO SH 183  
CSJ: 0581-02-121 FROM TEXAS PLAZA TO LP 12/1H-35E SPLIT

Dallas County  
HIGHWAY CLASSIFICATION  
URBAN FREEWAY  
MAY 2009  
Design Speeds  
MAIN LINES = 70 MPH  
RAMP = 50 MPH  
DIRECT CONNECTORS = 50 MPH  
FRONTAGE ROADS = 45 MPH  
CROSS STREETS = 45 MPH  
MANAGED HOV LANES = 70 MPH (MAIN LINES), 50 MPH (RAMPS)  
U-TURN (LOOP 12) = 20 MPH  
Average Daily Traffic 2008 (2028)  
SH 121 TO SH 161: 149,400 (224,200)  
SH 161 TO SH 348: 154,000 (231,000)  
SPUR 348 TO LOOP 12: 147,300 (221,000)  
LOOP 12 TO SH 183: 116,700 (175,000)  
HIGHWAY VOLUMES INCLUDE MAIN AND MANAGED HOV LANES ONLY  
SOURCE: NORTH CENTRAL TEXAS COUNCIL OF GOVERNMENTS  
ROLLS 1-10: SH 114 PLAN AND PROFILE  
ROLLS 11-12: LOOP 12 PLAN AND PROFILE  
ROLLS 13-23: SH 114 AND LOOP 12 PROFILES



© 2009 BY TEXAS DEPARTMENT OF TRANSPORTATION. ALL RIGHTS RESERVED.  
DART CITY OF IRVING

PREPARED BY BRIDGEFARMER & ASSOCIATES, INC. UNDER THE SUPERVISION OF  
STERLING C. FORSYTHE, III SHAHRIAR AZAD WEIYH TEE  
P.E. NO. 57339 DATE: 05/11/09 P.E. NO. 91682 DATE: 05/11/09 P.E. NO. 98478 DATE: 05/11/09  
BRIDGEFARMER & ASSOCIATES, INC. CONSULTING ENGINEERS  
12801 NORTH CENTRAL EXPRESSWAY, 4TH FLOOR  
DALLAS, TEXAS 75243  
TEL: (972) 231-8800 FAX: (972) 231-5900  
Roll: 22 of 23  
DATE APPROVED DATE SUBMITTED

DESIGN SCHEMATIC NOT INTENDED FOR CONSTRUCTION, BIDDING, OR PERMIT PURPOSES.  
DATE REVISD