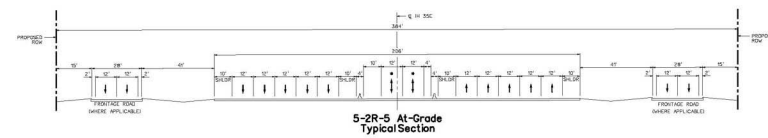
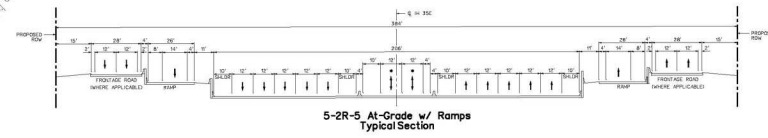
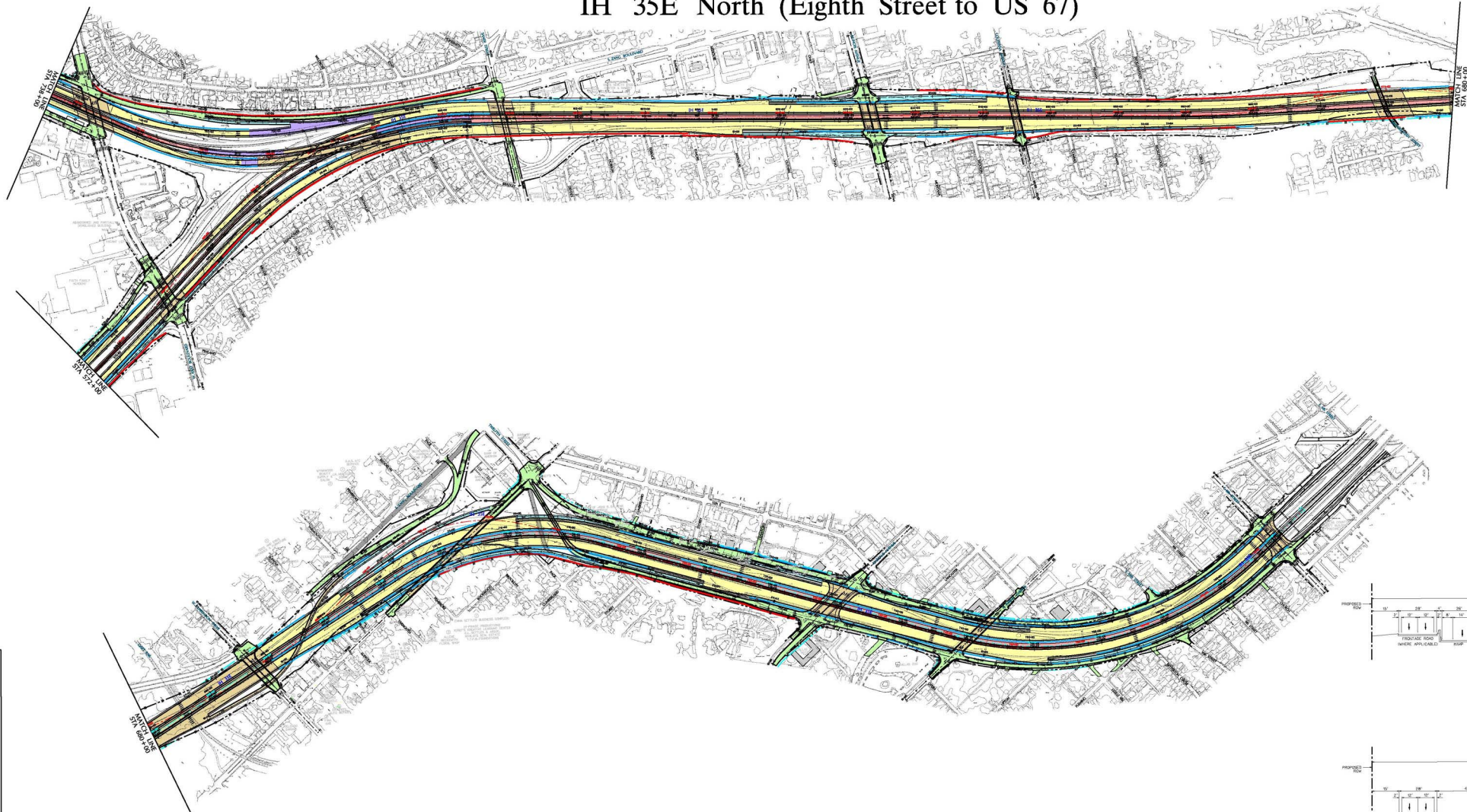


5-2R-5 At-Grade – IH 35E/US 67

IH 35E North (Eighth Street to US 67)

THESE ARE PRELIMINARY DESIGN CONCEPTS
 Subject to change based on further developments
 resulting from public input and technical review.

SCALE IN FEET



* NOTE: THE SPECIFIC USES OF THIS LANE HAS YET TO BE DETERMINED. IT COULD INCLUDE HOV, EXPRESS TRUCK ONLY, OR A COMBINATION OF THESE.

- LEGEND**
- Main Lanes
 - HOV
 - Frontage Roads
 - Ramps
 - Direct Connector
 - Bridge Structure
 - Existing ROW (approx.)
 - Proposed ROW
 - Existing Centerline
 - Proposed Baseline
 - Noise Wall
 - Retaining Wall

THE SOUTHERN GATEWAY
 IH 35E/US 67 TRANSPORTATION STUDY
 IH 35E North (Eighth Street to US 67)
 5-2R-5 At-Grade – IH 35E/US 67
 0402 - 03 - 088 DATE: MARCH 2005

HNTB
 HNTB CONSULTING ENGINEERS PLANNERS
 AND ARCHITECTS
 2004
 Texas Department of Transportation

THE SOUTHERN GATEWAY
 IH 35E/US 67 TRANSPORTATION STUDY
 IH 35E North (Eighth Street to US 67)
 5-2R-5 At-Grade – IH 35E/US 67
 0402 - 03 - 088 DATE: MARCH 2005

HNTB
 HNTB CONSULTING ENGINEERS PLANNERS
 AND ARCHITECTS
 2004
 Texas Department of Transportation