

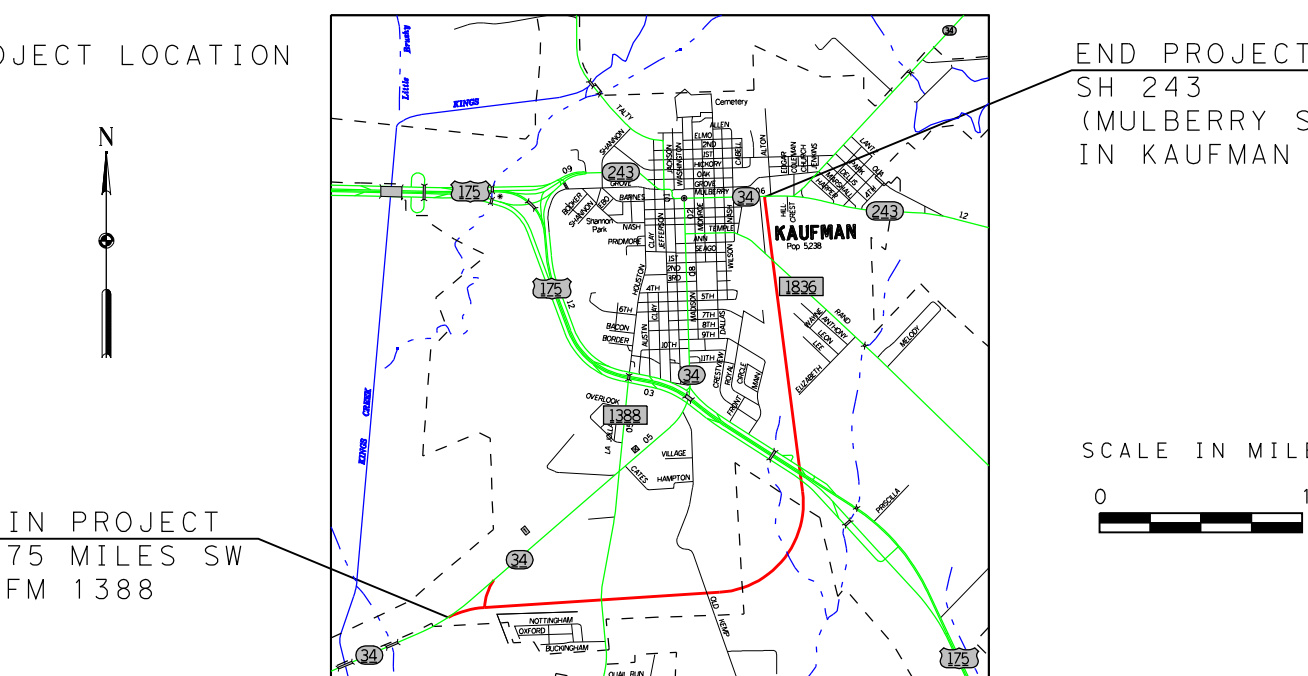
DALLAS DISTRICT
WILLIAM L. HALE, P.E. DISTRICT ENGINEER

DESIGN SCHEMATIC
KAUFMAN COUNTY

STATE HIGHWAY 34
FROM 1.375 MILES SOUTHWEST OF FM 1388
TO SH 243 (MULBERRY ST.) IN KAUFMAN

CSJ: 0173-03-015

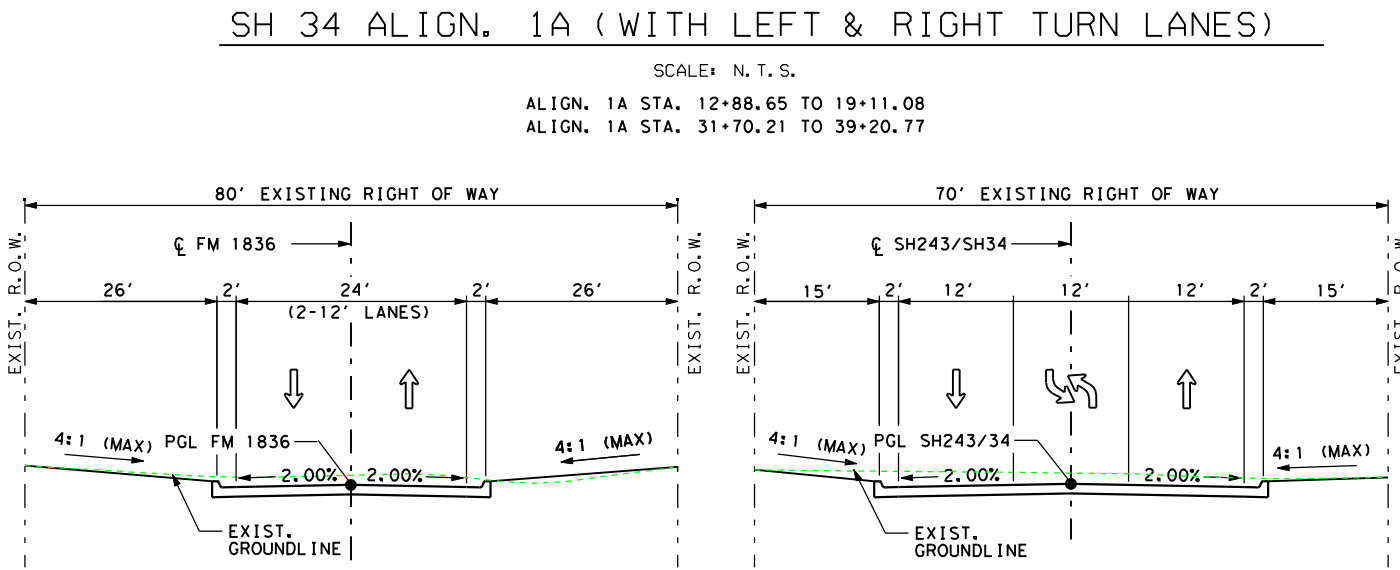
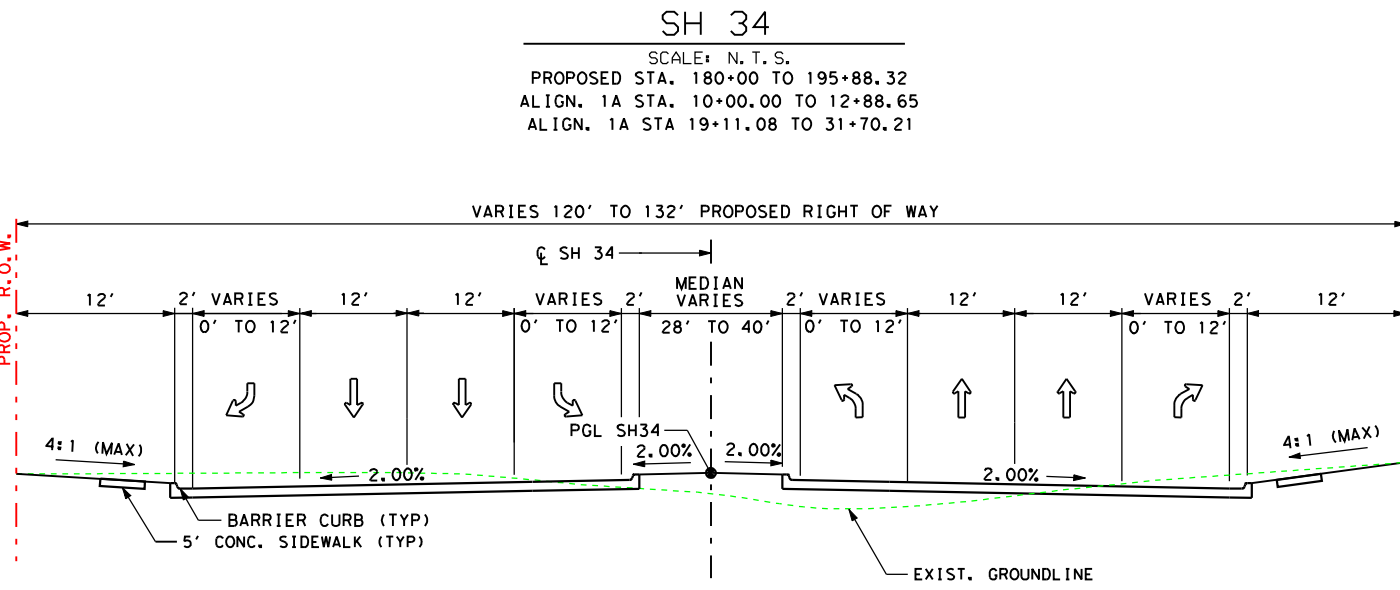
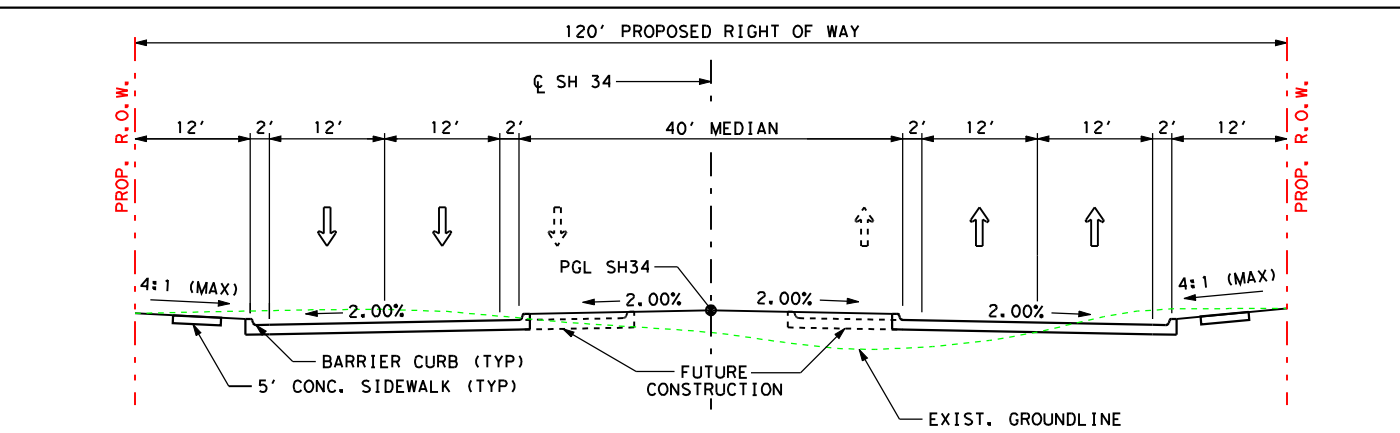
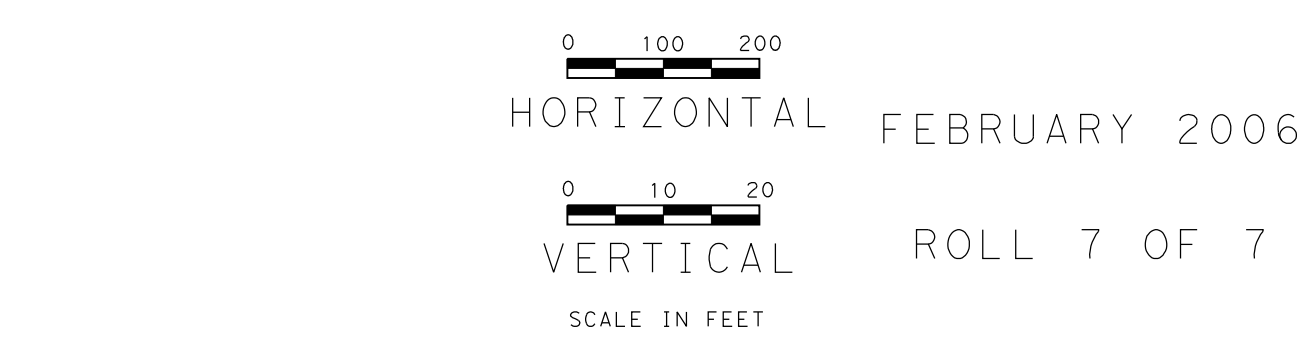
MINOR URBAN ARTERIAL
PROJECT LENGTH = 3.5 MILES
DESIGN SPEED = 45 MPH



PREPARED BY CHIANG, PATEL & YERBY, INC.
UNDER THE SUPERVISION OF:

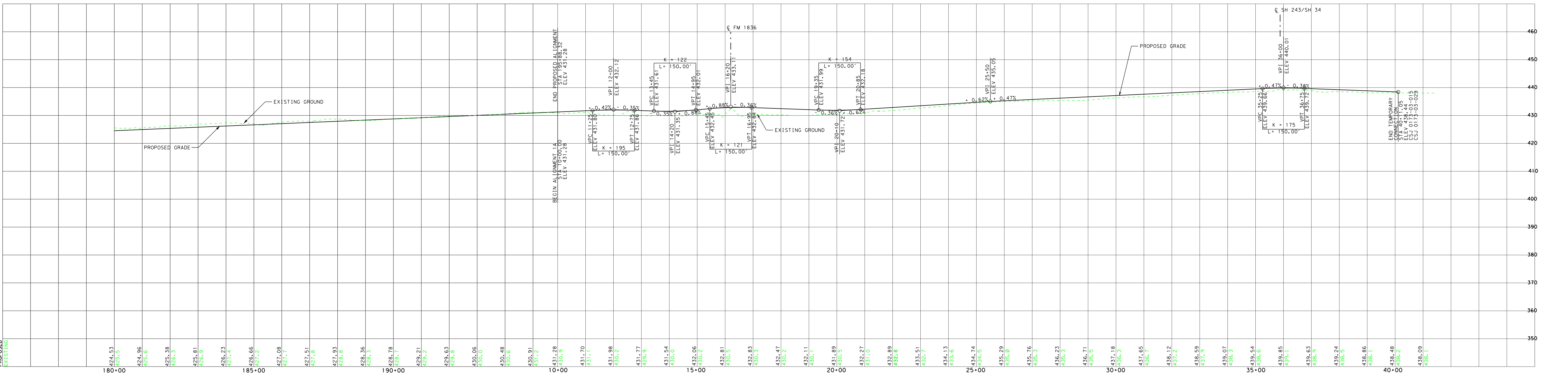
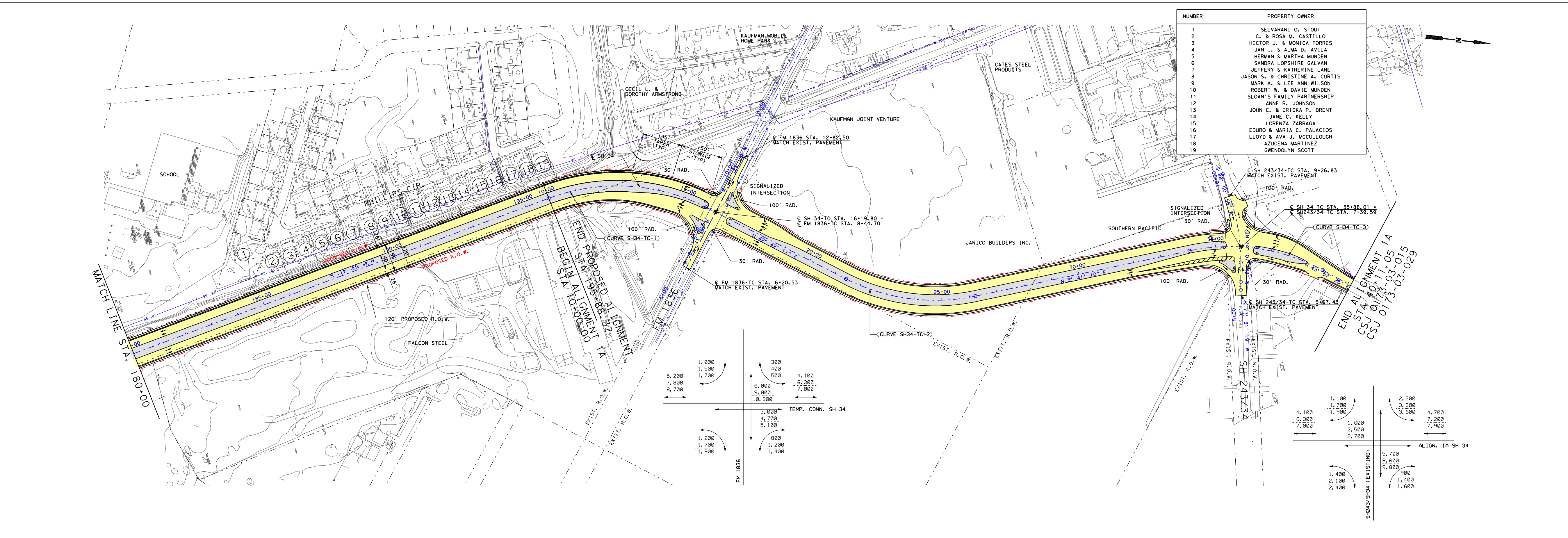
CP&Y Chiang, Patel & Yerby, Inc.
KARA K. HUFFMAN, P.E.

SERIAL NO. 88525
DATE: _____



CURVE NO.	STATION	COORDINATE		BEARING/ DELTA (FT)	LENGTH (FT)	TANGENT (FT)	RADIUS (FT)
		N	E				
CL SH 34-TEMP CONN							
SH34-TC-1	10+00	6902749.44	2645705.78	N 4°53'41.41" W			
	PI	13+08.72	6,903,057.04	2,645,679.44	47°35'52.41" (RT)	581.52	308.72
	PT	15+81.52	6903283.909	2645886.816	N 42°42'11.00" E		
SH34-TC-2							
	PC	21+44.66	6,903,697.75	2,646,210.14	N 42°42'11.00" E		
	PI	23+92.66	6,903,880.00	2,646,438.93	39°01'01.03" (LT)	476.68	248.00
	PT	26+21.34	6,904,127.49	2,646,454.88	N 03°41'09.98" E		
SH34-TC-3							
	PC	34+05.07	6,904,909.59	2,646,505.26	N 03°41'09.98" E		
	PI	38+61.72	6,905,165.71	2,646,521.76	40°16'15.14" (RT)	492.00	256.65
	PT	38+97.07	6,905,350.47	2,646,699.91	N 43°57'25.12" E		
CL FM 1836-TC							
	POB	5+00	6,903,075.29	2,646,165.31	N 46°37'10.19" W		
	PDE	10+88.52	6,903,479.51	2,645,737.57			
CL EXIST. SH243/SH34-TC							
	POB	5+00	6,905,030.29	2,646,775.90	N 77°31'18.75" W		
243/34-TC-1							
	PC	6+86.41	6,905,075.40	2,646,595.10	N 74°07'42.66" W		
	PI	7+91.17	6,905,104.05	2,646,494.34	17°01'19.41" (LT)	207.96	104.75
	PT	8+94.38	6,905,101.95	2,646,389.61	S 88°50'57.94" W		
	PDE	10+11.62	6,905,099.59	2,646,272.38	S 88°50'57.94" W		

- LEGEND:**
- PROPOSED STATE HIGHWAY 34 PAVING (LANEWAYS, TURN LANES, INTERSECTIONS, RAMPS AND CONNECTIONS)
 - PROPOSED STATE HIGHWAY 34 BRIDGE STRUCTURE
 - PROPOSED ABANDONMENT OF EXISTING PAVEMENTS
 - EXISTING MAJOR STATE HIGHWAY FRONTAGE ROAD OR INTERSTATE
 - EXISTING UTILITIES (APPROX.)
 - EXISTING RIGHT OF WAY (APPROX.)
 - PROPOSED RIGHT OF WAY
 - PROPOSED CENTERLINE
- NOTES:**
- EXISTING ROW IS APPROXIMATE AND BASED ON AERIAL PHOTOGRAPHS, TOPOGRAPHICAL INFORMATION, AND ABSTRACT MAPS.
 - DRIVEWAY AND MEDIAN OPENING LOCATIONS TO BE DETERMINED IN PSBE IN COORDINATION WITH THE CITY.
 - DESIGN BASED ON NAD83 COORDINATES
 - THE INFORMATION SHOWN ON THIS DRAWING CONCERNING TYPE AND LOCATION OF EXISTING UTILITIES IS NOT GUARANTEED TO BE ACCURATE OR ALL INCLUSIVE. LOCATIONS OF ALL EXISTING UTILITIES SHOWN ARE APPROXIMATE AND SHOULD BE FIELD VERIFIED PRIOR TO CONSTRUCTION.
- 2008 AND 2008 ANTICIPATED AVERAGE DAILY TRAFFIC VOLUMES AND TURNING MOVEMENTS FOR SH 34 RELOCATION KAUFMAN COUNTY. TRAFFIC VOLUMES PROVIDED BY TPP AUSTIN, (DECEMBER 4, 2003)



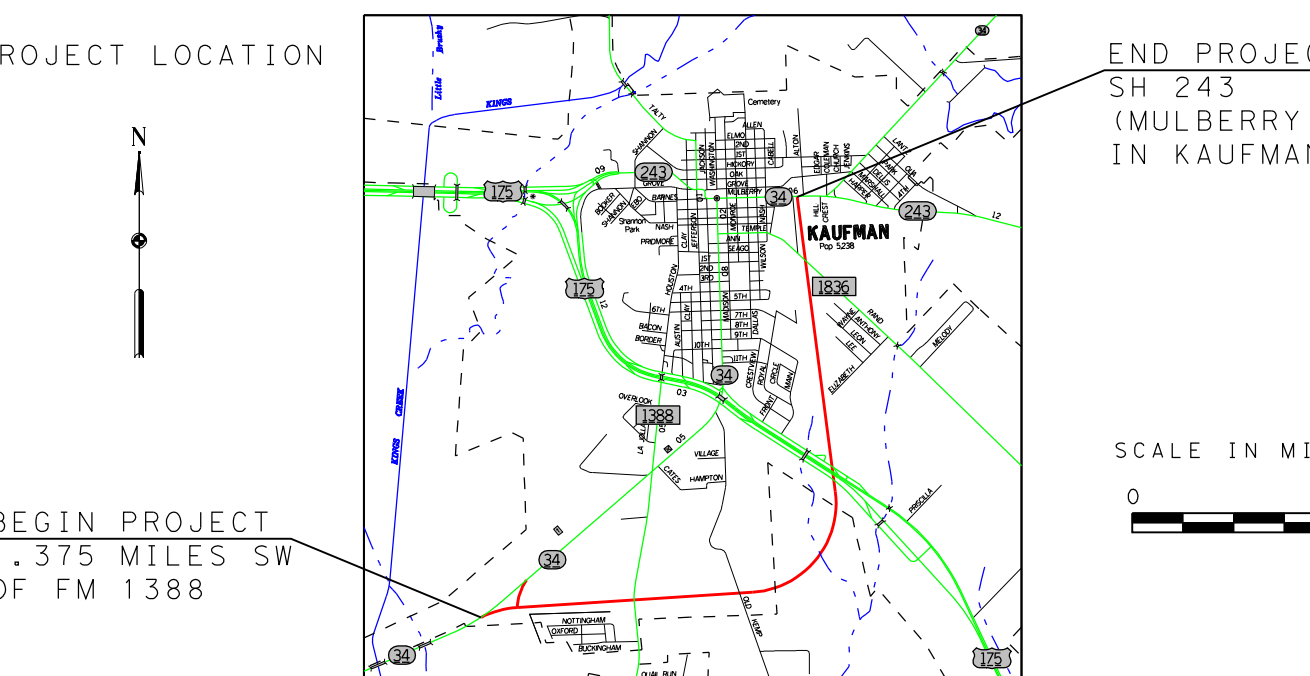
DALLAS DISTRICT
WILLIAM L. HALE, P.E. DISTRICT ENGINEER

DESIGN SCHEMATIC
KAUFMAN COUNTY

STATE HIGHWAY 34
FROM 1.375 MILES SOUTHWEST OF FM 1388
TO SH 243 (MULBERRY ST.) IN KAUFMAN

CSJ: 0173-03-015

MINOR URBAN ARTERIAL
PROJECT LENGTH = 3.5 MILES
DESIGN SPEED = 45 MPH



PREPARED BY CHIANG, PATEL & YERBY, INC.
UNDER THE SUPERVISION OF:

CP&Y Chiang, Patel & Yerby, Inc.
KARA K. HUFFMAN, P.E.

SERIAL NO. 88525
DATE: _____

