

FED. ROAD DIST. NO.	PROJECT NO.		SHEET NO.
6			1
STATE	DIST.	COUNTY	HIGHWAY NO.
TEXAS	1B	DALLAS	S.H. 183
R.O.W.	CONT.	SECT.	JOB
	0094	03	099
CONSTRUCTION	CONT.	SECT.	JOB
	0094	03	065

STATE OF TEXAS
DEPARTMENT OF TRANSPORTATION

PLANS OF PROPOSED
RIGHT OF WAY PROJECT
DALLAS COUNTY

S.H. 183

FROM: O'CONNER ROAD
TO: 0.66 MILES WEST OF LOOP 12

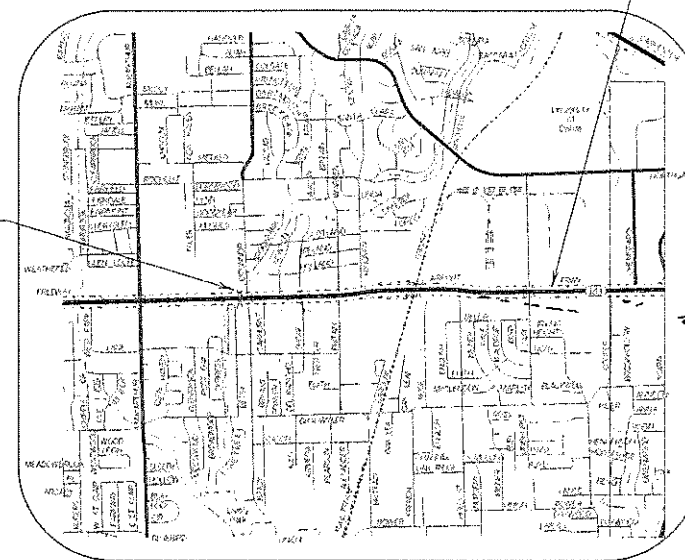
ROW CSJ NO. 0094-03-099
NET LENGTH OF PROJECT = 7,732.97 FEET = 1.465 MILES

INDEX OF SHEETS

SHEET NO.	DESCRIPTION
1	TITLE SHEET
2	CONTROL SHEET
3 - 15	R.O.W. PLAN SHEET

UTILITIES LOCATED WITHIN
PROJECT LIMITS
UTILITY COMPANY STATIONING

END PROJECT
R.O.W. CSJ: 0094-03-099
STA. 443+32.97

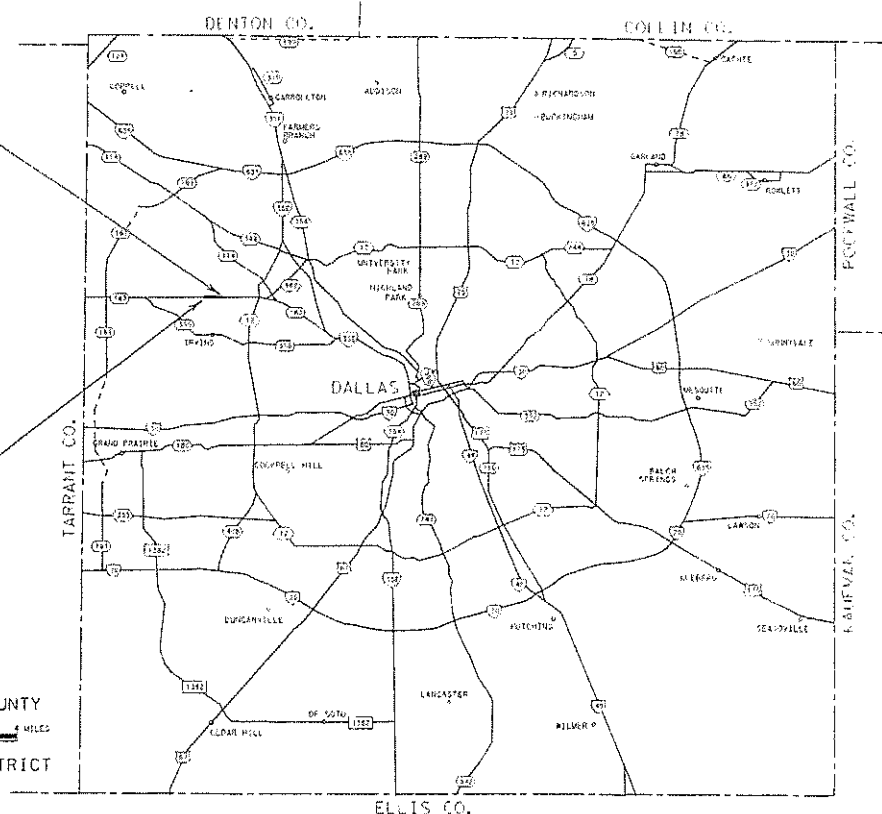


VICINITY MAP
N.T.S.

BEGIN PROJECT
R.O.W. CSJ: 0094-03-099
STA. 366+00.00

BEGIN PROJECT
R.O.W. CSJ: 0094-03-099
STA. 366+00.00

END PROJECT
R.O.W. CSJ: 0094-03-099
STA. 443+32.97



NO EQUATIONS
NO EXCEPTIONS

RECOMMENDED FOR ACQUISITION
OF RIGHT OF WAY
MARCH 9, 2005

Samuel J. [Signature]
DISTRICT SURVEYOR (MAPPING)

RECOMMENDED FOR ACQUISITION
OF RIGHT OF WAY
MARCH 11, 2005

Daniel [Signature]
DESIGN ENGINEER

FINAL APPROVAL _____ 20__

DISTRICT ENGINEER

CONVENTIONAL SIGNS

- EXIST. ROW LINE
- NEW ROW LINE
- PROPERTY LINE
- COUNTY LINE
- CONTROL OF ACCESS LINE
- SURVEY LINE
- FENCE
- CITY LIMITS
- RAILROAD STRUCTURE
- IRON ROD SET UNLESS OTHERWISE NOTED
- PARCEL NUMBER

DALLAS COUNTY
SCALE 0 1 2 3 4 MILES
DALLAS DISTRICT

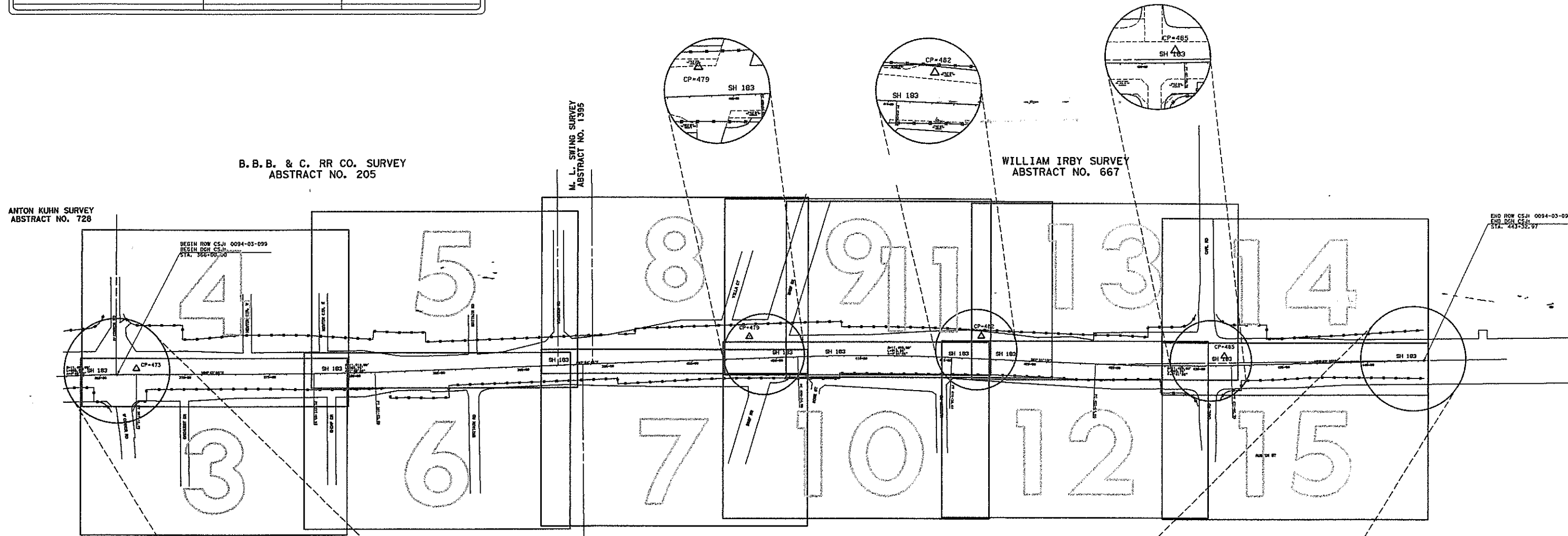
R.O.W. PLAN SHEET LAYOUT SCALE: 1" = 50'

THIS MAP IS AN INTERNAL TxDOT DOCUMENT.
ITS CONTENTS SHALL NOT BE USED FOR ANY OTHER PURPOSE.

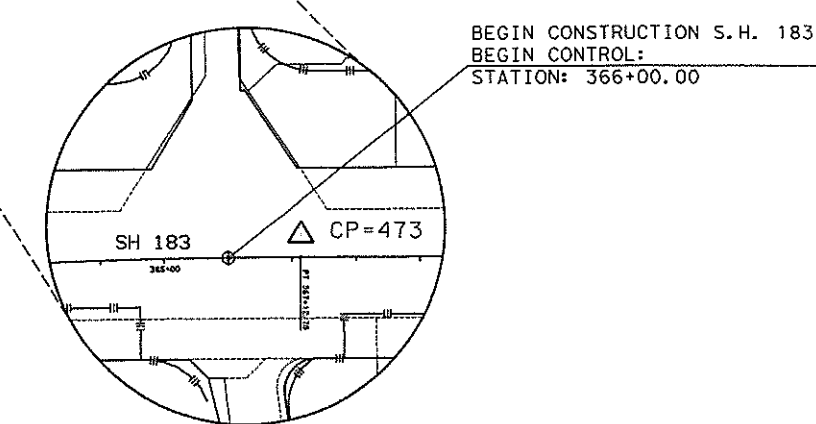
THE SHADED SHAPES ARE SHOWING THE PROPOSED ROADWAY.

BASIS OF BEARING: N.A.D. 83, NORTH CENTRAL ZONE
COMBINED SURFACE ADJUSTMENT FACTOR 1.000136505
ALL COORDINATES COORDINATES ARE SURFACE ADJUSTED.

CONTROL MONUMENT	NORTHING	EASTING
BEGIN PROJECT (S.H. 183)	6,991,902.349	2,444,475.771
CP = 473	6,991,938.890	2,444,589.967
CP = 479	6,992,128.092	2,448,212.437
CP = 482	6,992,133.262	2,449,586.872
CP = 485	6,992,018.158	2,451,024.029
END PROJECT (S.H. 183)	6,991,991.343	2,452,205.323

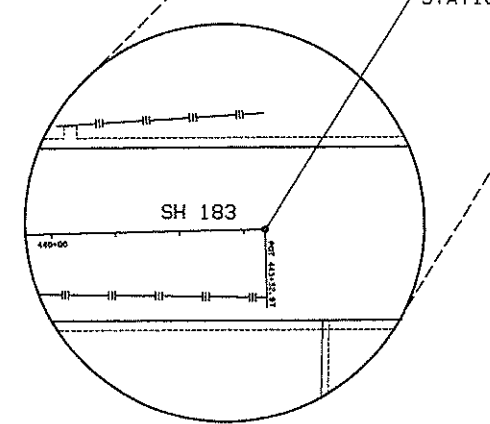


JOHN C. READ SURVEY
ABSTRACT NO. 1182



DETAIL "N.T.S."

SOLOMON HUITT SURVEY
ABSTRACT NO. 618



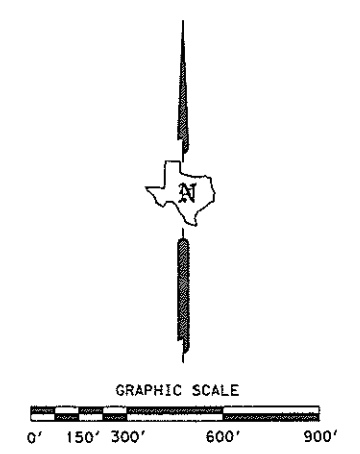
DETAIL "N.T.S."

END CONSTRUCTION S.H. 183
END CONTROL:
STATION: 443+32.97

ALL BEARINGS ARE ON THE TEXAS STATE PLANE COORDINATE SYSTEM, NAD. 83 (1993 ADJ.) NORTH CENTRAL ZONE, ALL DISTANCES AND COORDINATES SHOWN ARE SURFACE AND MAY BE CONVERTED TO GRID BY DIVIDING BY TxDOT CONVERSION FACTOR OF 1.000136506.

CONTROL MAP SHEET NOT TO THE SAME SCALE AS THE RIGHT OF WAY PLAN SHEETS

CITY OF IRVING



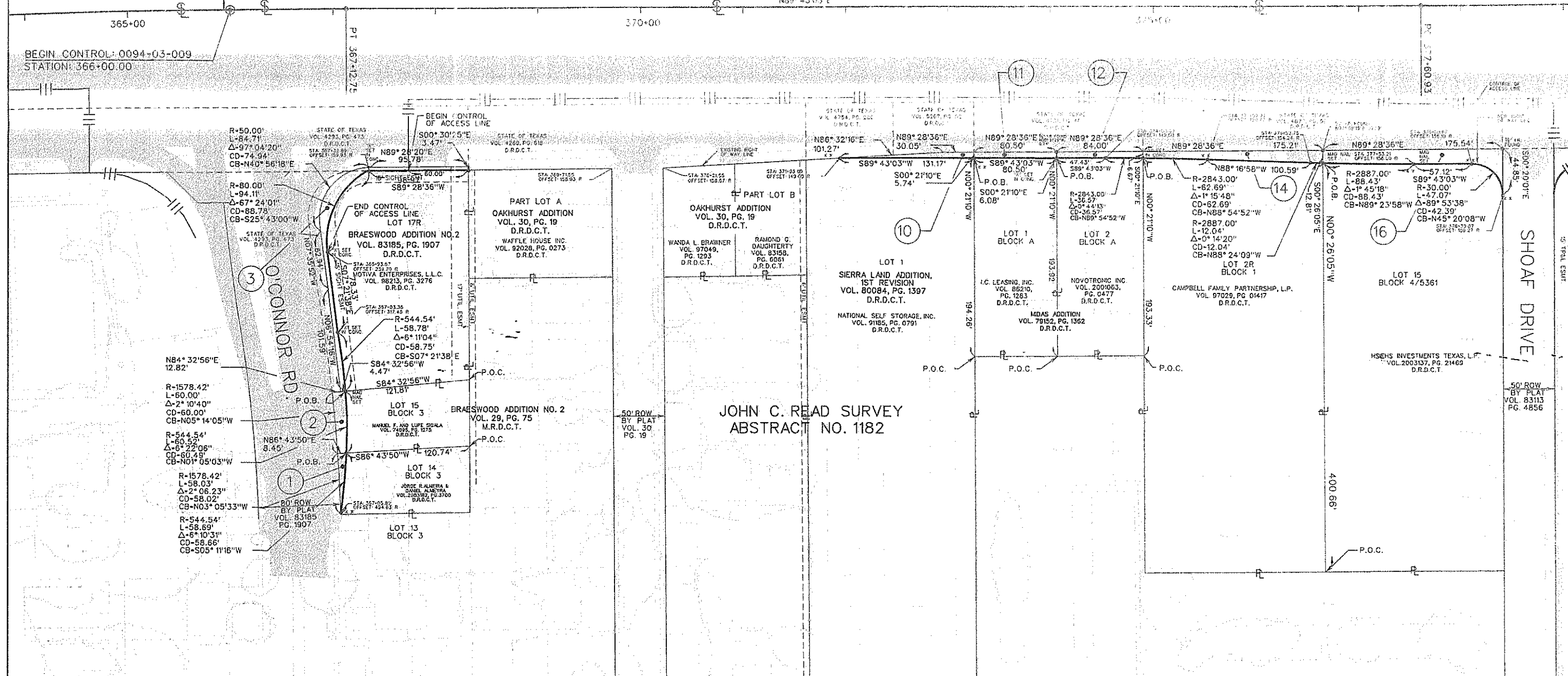
FEED NO.	STATE	FEDERAL AID PROJECT NO.	HIGHWAY NO.		
6	TEXAS		SH 183		
STATE PROJECT NO.	COUNTY	CONTRACT NO.	SECTION NO.	JOB NO.	SHEET NO.
18	DALLAS	0094	03	099	2

ANTON KUHN SURVEY
ABSTRACT NO. 728

SH 183

B.B.B. & C. RR. CO. SURVEY
ABSTRACT NO. 205

SEE SHEET NO.4 FOR PARCELS
4,5,6,7,8,9,13 AND 15



1

JORDE R. ALMEIRA &
DANIEL ALMEYRA
DEED
VOL. PG.
265 S.F.
REM = 0.1770 ACRES

2

MANUEL F. SIGALA AND WIFE
DEED
VOL. PG.
662 S.F.
REM = 0.1737 ACRES

3

MOTIVA ENTERPRISES, L.L.C.
DEED
VOL. PG.
1843 S.F.
REM = 0.6251 ACRES

10

NATIONAL SELF
STORAGE, INC
DEED
VOL. PG.
455 S.F.
REM = 2.8956 ACRES

11

I.C. LEASING, INC.
DEED
VOL. PG.
476 S.F.
REM = 0.3587 ACRES

12

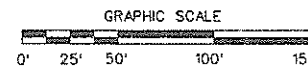
NOVOTRONIC INC.
DEED
VOL. PG.
529 S.F.
REM = 0.3735 ACRES

14

CAMPBELL FAMILY
PARTNERSHIP, LP
DEED
VOL. PG.
1,662 S.F.
REM = 1.6235 ACRES

16

HSEHS INVESTMENTS
TEXAS, LP
DEED
VOL. PG.
2,705 S.F.
REM = 1.5999 ACRES



ALL BEARINGS ARE ON THE TEXAS STATE PLANE
COORDINATE SYSTEM, NAD, 83 (1993 Adj.)
NORTH CENTRAL ZONE, ALL DISTANCES AND
COORDINATES SHOWN ARE SURFACE AND MAY
BE CONVERTED TO GRID BY DIVIDING BY TxDOT
CONVERSION FACTOR OF 1.000136506.

JOHN C. READ SURVEY
ABSTRACT NO. 1182

CITY OF IRVING

REVISED : 12-19-2005

FILE NO.	STATE	FEDERAL AID PROJECT NO.	HIGHWAY NO.
6	TEXAS		SH 183
STATE ROUTE NO.	COUNTY	COURSE NO.	SECTION NO.
18	DALLAS	0094 03	099 3

SEE SHEET NO.3 FOR PARCELS 1,2,3,10,11,12,14 AND 16

B.B.B. & C. RR CO. SURVEY
ABSTRACT NO. 205

ALL BEARINGS ARE ON THE TEXAS STATE PLANE
COORDINATE SYSTEM, NAD 83 (1993 Adj.)
NORTH CENTRAL ZONE, ALL DISTANCES AND
COORDINATES SHOWN ARE SURFACE AND MAY
BE CONVERTED TO GRID BY DIVIDING BY TXDOT
CONVERSION FACTOR OF 1.000136506.



- ④
TAREK B. ADRA &
LOUISE V. ADRA
DEED
VOL. PG.
2,889 S.F.
REM. - 0.3235 ACRES
- ⑤
MOTIVA ENTERPRISES, INC.
DEED
VOL. PG.
32,014 S.F.
WHOLE TAKE
- ⑥
HARESH VANPARIA
DEED
VOL. PG.
28,190 S.F.
WHOLE TAKE
- ⑦
NATIONAL
CELLULAR INC.
DEED
VOL. PG.
10,100 S.F.
WHOLE TAKE
- ⑧
ECONO LUBE
AND TUNE, CO.
DEED
VOL. PG.
17,691 S.F.
WHOLE TAKE
- ⑨
HATTS, INC.
DEED
VOL. PG.
29,066 S.F.
WHOLE TAKE
- ⑬
RUDOLPH H. ZACHARIAS JR.
DEED
VOL. PG.
26,996 S.F.
WHOLE TAKE
- ⑮
PHILLIP D. BAKER
AND MARTIN ROGERS
DEED
VOL. PG.
44,997 S.F.
WHOLE TAKE

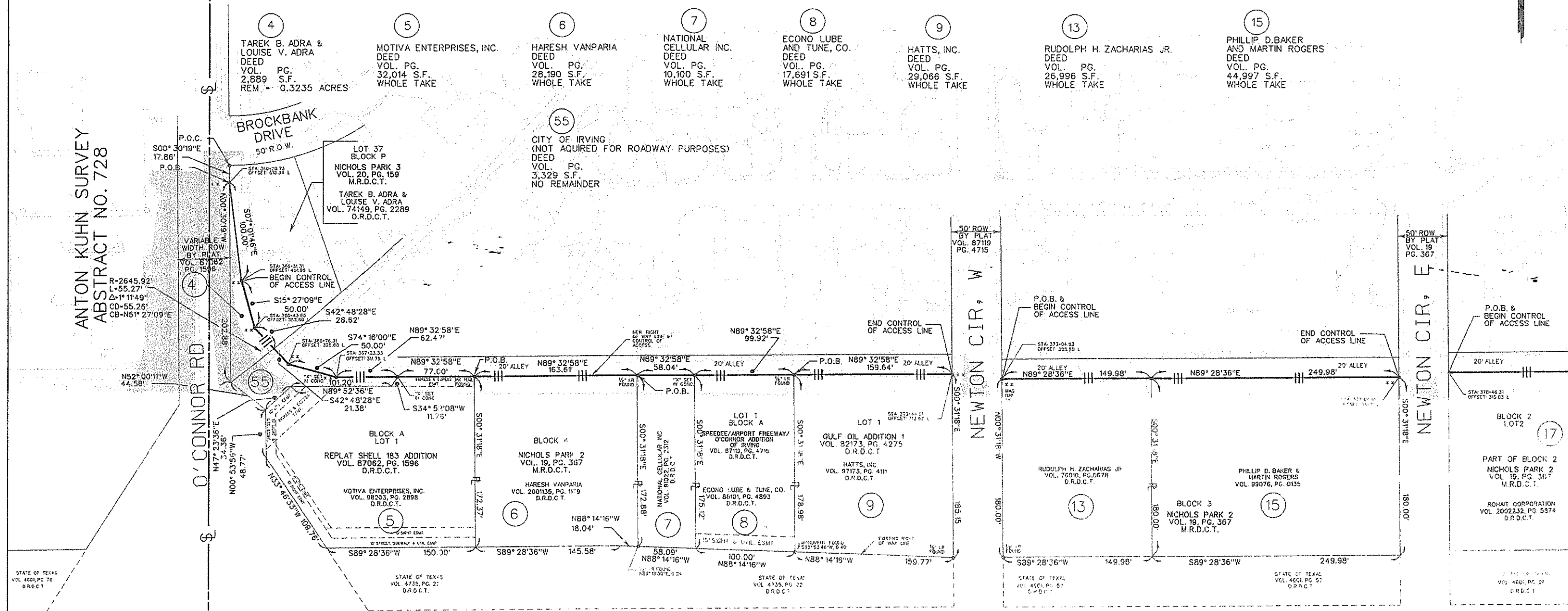
⑤⑤
CITY OF IRVING
(NOT ACQUIRED FOR ROADWAY PURPOSES)
DEED
VOL. PG.
3,329 S.F.
NO REMAINDER

ANTON KUHN SURVEY
ABSTRACT NO. 728

O'CONNOR RD

NEWTON CIR, W

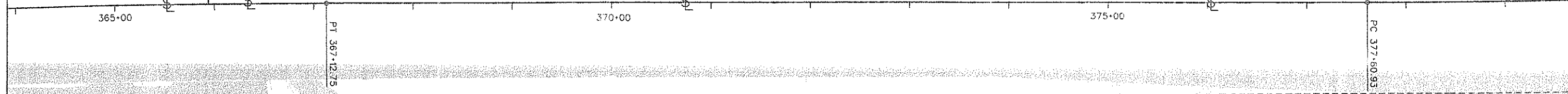
NEWTON CIR, E



ANTON KUHN SURVEY
ABSTRACT NO. 728

B.B.B. & C. RR CO. SURVEY
ABSTRACT NO. 205

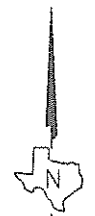
SH 183



STATE OF TEXAS VOL. 4261, PG. 76 D.R.D.C.T.	STATE OF TEXAS VOL. 4260, PG. 618 D.R.D.C.T.	STATE OF TEXAS VOL. 4784, PG. 386 D.R.D.C.T.	STATE OF TEXAS VOL. 5287, PG. 52 D.R.D.C.T.	STATE OF TEXAS VOL. 4231, PG. 46 D.R.D.C.T.	STATE OF TEXAS VOL. 4877, PG. 99 D.R.D.C.T.
JOHN C. READ SURVEY ABSTRACT NO. 1182					
CITY OF IRVING REVISED: 02-07-2006 REVISED: 12-19-2005 REVISED: 03-04-2005					
STATE	FEDERAL AID PROJECT NO.	HIGHWAY NO.		SHEET NO.	
6 TEXAS		SH 183		4	
STATE COUNTY	COUNTY	SECTION NO.	TOWNSHIP NO.	SHEET NO.	
18 DALLAS	0094	03	099	4	

ALL BEARINGS ARE ON THE TEXAS STATE PLANE COORDINATE SYSTEM, NAD 83 (1993 ADJ.) NORTH CENTRAL ZONE, ALL DISTANCES AND COORDINATES SHOWN ARE SURFACE AND MAY BE CONVERTED TO GRID BY DIVIDING BY TxDOT CONVERSION FACTOR OF 1.000136506.

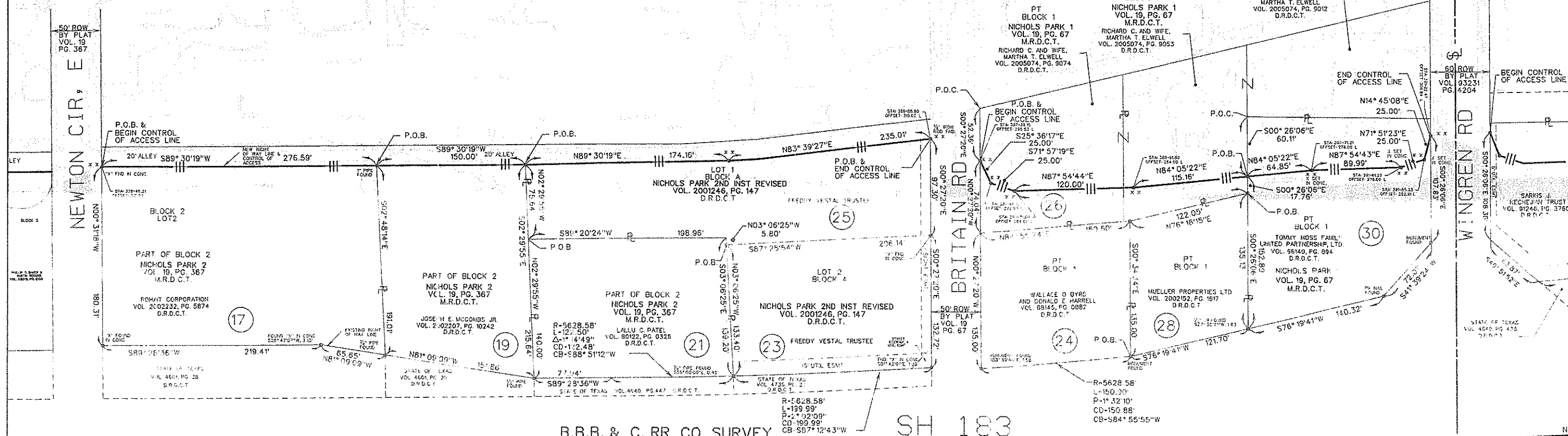
SEE SHEET NO.6 FOR PARCELS 18,20,22,27 AND 29



B.B.B. & C. RR CO. SURVEY
ABSTRACT NO. 205

- 17
ROHAI CORPORATION
DEED
VOL. PG.
50,843 S.F.
WHOLE TAKE
- 19
JOSEPH E. McCOMBS JR
DEED
VOL. PG.
30,368 S.F.
WHOLE TAKE
- 21
LALLU C. PATEL
DEED
VOL. PG.
27,938 S.F.
WHOLE TAKE
- 23
FREDDY VESTAL TRUSTEE
DEED
VOL. PG.
27,128 S.F.
WHOLE TAKE
- 24
WALLACE O.BYRD AND
DONALD E.HARRELL
DEED
VOL. PG.
20,337 S.F.
WHOLE TAKE
- 25
FREDDY VESTAL TRUSTEE
DEED
VOL. PG.
33,785 S.F.
WHOLE TAKE
- 26
RICHARD C. &
MARTHA T. ELWELL
DEED
VOL. PG.
9,202 S.F.
REM - 1.0738 ACRES
- 28
MUELLER PROPERTIES, LTD.
DEED
VOL. PG.
16,028 S.F.
WHOLE TAKE
- 30
TOMMY MOSS
FAMILY, LTD.
DEED
VOL. PG.
24,587 S.F.
REM - 0.2188 ACRES

B.B.B. & C. RR CO. SURVEY ABSTRACT NO. 205



B.B.B. & C. RR CO. SURVEY ABSTRACT NO. 205

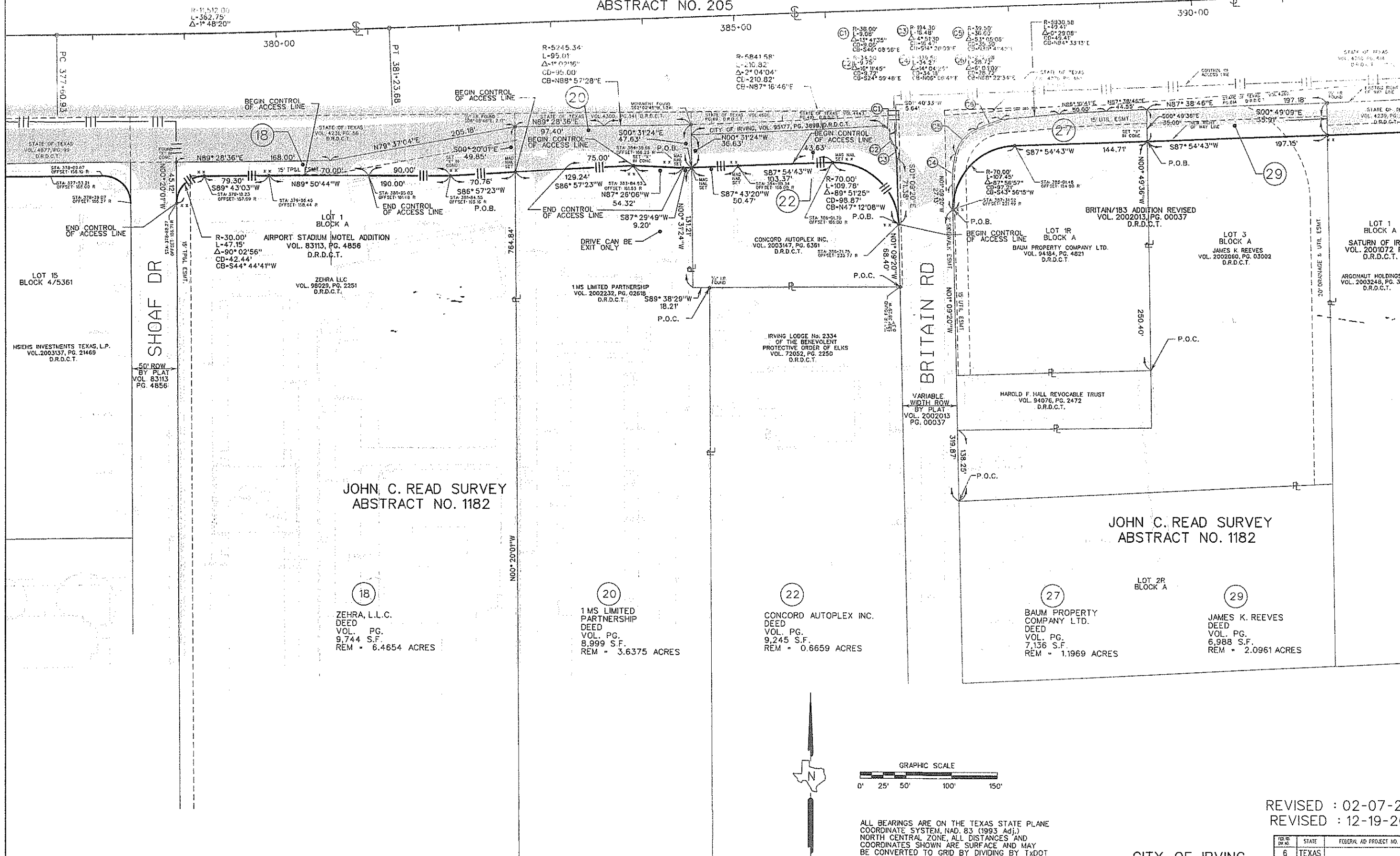
JOHN C. READ SURVEY
ABSTRACT NO. 1182

CITY OF IRVING

REVISED : 02-07-2006
REVISED : 12-19-2005

STATE	FEDERAL AID PROJECT NO.	HIGHWAY NO.			
6 TEXAS		SH 183			
STATE	COUNTY	CONTROL NO.	SECTION NO.	GRID NO.	SHEET NO.
18	DALLAS	0094	03	099	5

SHEET NO. 5 FOR PARCELS
17, 19, 21, 23, 24, 25, 26, 28 AND 30
B.B.B. & C. RR CO. SURVEY
ABSTRACT NO. 205 **SH 183**



JOHN C. READ SURVEY
ABSTRACT NO. 1182

JOHN C. READ SURVEY
ABSTRACT NO. 1182

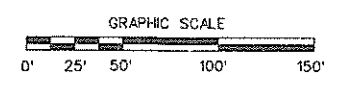
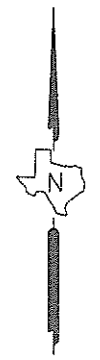
18
ZEHRA, L.L.C.
 DEED
 VOL. PG.
 9,744 S.F.
 REM = 6.4654 ACRES

20
1 MS LIMITED PARTNERSHIP
 DEED
 VOL. PG.
 8,999 S.F.
 REM = 3.6375 ACRES

22
CONCORD AUTOPLEX INC.
 DEED
 VOL. PG.
 9,245 S.F.
 REM = 0.6659 ACRES

27
BAUM PROPERTY COMPANY LTD.
 DEED
 VOL. PG.
 7,136 S.F.
 REM = 1.1969 ACRES

29
JAMES K. REEVES
 DEED
 VOL. PG.
 6,988 S.F.
 REM = 2.0961 ACRES



ALL BEARINGS ARE ON THE TEXAS STATE PLANE COORDINATE SYSTEM, NAD, 83 (1993 Adj.) NORTH CENTRAL ZONE, ALL DISTANCES AND COORDINATES SHOWN ARE SURFACE AND MAY BE CONVERTED TO GRID BY DIVIDING BY TxDOT CONVERSION FACTOR OF 1.000136506.

CITY OF IRVING

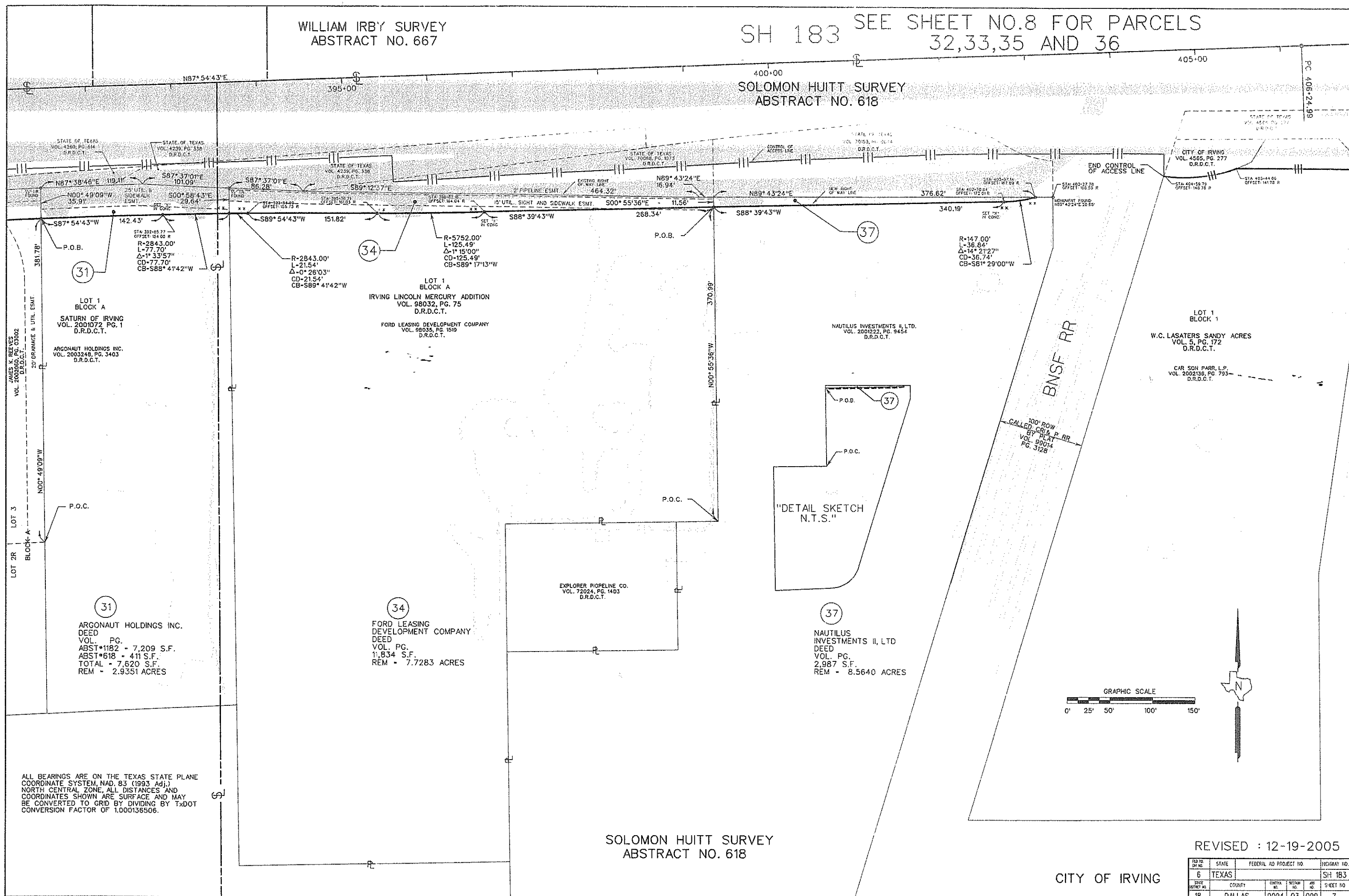
REVISED : 02-07-2006
 REVISED : 12-19-2005

STATE	FEDERAL AID PROJECT NO.	HIGHWAY NO.
6 TEXAS		SH 183
COUNTY	SECTION	SHEET NO.
18 DALLAS	0094 03 099	6

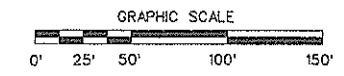
WILLIAM IRBY SURVEY
ABSTRACT NO. 667

SH 183 SEE SHEET NO.8 FOR PARCELS
32,33,35 AND 36

SOLOMON HUITT SURVEY
ABSTRACT NO. 618



ALL BEARINGS ARE ON THE TEXAS STATE PLANE
COORDINATE SYSTEM, NAD, 83 (1993 Adj.)
NORTH CENTRAL ZONE. ALL DISTANCES AND
COORDINATES SHOWN ARE SURFACE AND MAY
BE CONVERTED TO GRID BY DIVIDING BY TxDOT
CONVERSION FACTOR OF 1.000136506.



SOLOMON HUITT SURVEY
ABSTRACT NO. 618

REVISED : 12-19-2005

CITY OF IRVING

FILE NO. SH 183	STATE TEXAS	FEDERAL AID PROJECT NO. 0094 03 099	ROUTEWAY NO. 7
STATE DISTRICT NO. 18	COUNTY DALLAS	CONTRACT NO. 0094 03 099	SHEET NO. 7

SEE SHEET NO.7 FOR PARCELS 31,34 AND 37
SEE SHEET NO.9 FOR PARCEL 38

WILLIAM IRBY SURVEY
ABSTRACT NO. 667

B.B.B. & C. RR CO. SURVEY
ABSTRACT NO. 205

32
SARKIS J. KECHEJIAN TRUST
DEED
VOL. PG.
ABST. 1395 - 18,843 S.F.
ABST. 667 - 4,635 S.F.
TOTAL - 23,478 S.F.
REM - 0.1350 ACRES

33
ARUNA ENTERPRISES, INC
DEED
VOL. PG.
ABST. 1395 - 96 S.F.
ABST. 667 - 18,698 S.F.
18,794 S.F. TOTAL
REM - 5.0296 ACRES

35
SARKIS J. KECHEJIAN TRUST
DEED
VOL. PG.
14,199 S.F.
REM - 4.0198 ACRES

36
RODGER A. AND
CAROL E. JOHNSON
DEED
VOL. PG.
3,569 S.F.
REM - 1.4544 ACRES

M. L. SWING SURVEY
ABSTRACT NO. 1395

ARUNA ENTERPRISES, INC.
VOL. 94060, PG. 2349
D.R.D.C.T.

LOT2
BLOCK A

S.B.T. ADDITION
VOL. 93231, PG. 4204
D.R.D.C.T.

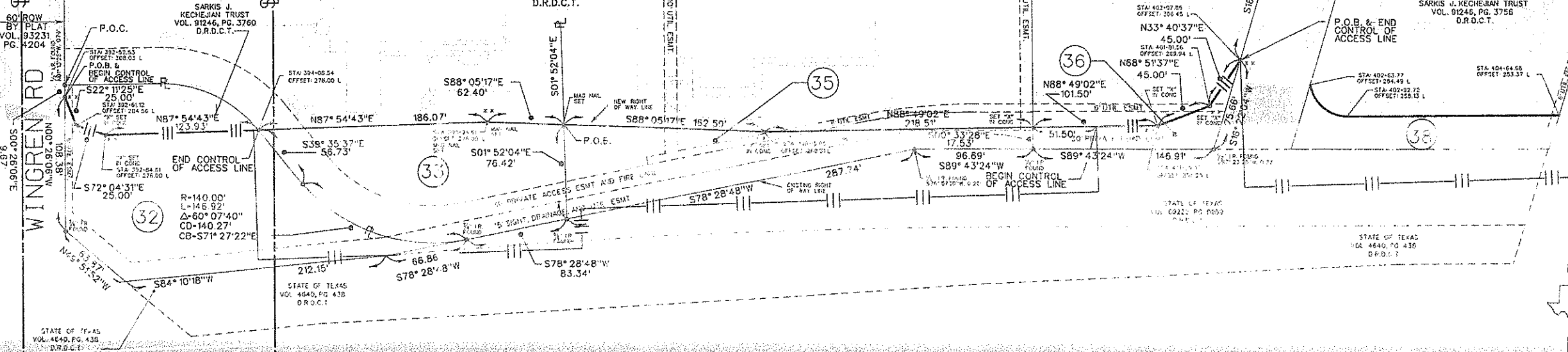
LOT1
BLOCK A
SARKIS J. KECHEJIAN TRUST
VOL. 99153, PG. 6890
D.R.D.C.T.

LOT1
BLOCK A
KANSAS CITY LIFE
VOL. 78154, PG. 3124
D.R.D.C.T.

RODGER A. & CAROL E. JOHNSON
VOL. 94095, PG. 1894
D.R.D.C.T.

LOT2
BLOCK B
WINGREN OFFICE PARK
ADDITION
VOL. 79180, PG. 0516
D.R.D.C.T.

SARKIS J. KECHEJIAN TRUST
VOL. 91245, PG. 3758
D.R.D.C.T.



WILLIAM IRBY SURVEY
ABSTRACT NO. 667

SH 183

SOLOMON HUITT SURVEY
ABSTRACT NO. 618

405 REVISED : 02-07-2006
REVISED : 12-19-2005

ALL BEARINGS ARE ON THE TEXAS STATE PLANE
COORDINATE SYSTEM, NAD 83 (1993 Adj.)
NORTH CENTRAL ZONE. ALL DISTANCES AND
COORDINATES SHOWN ARE SURFACE AND MAY
BE CONVERTED TO GRID BY DIVIDING BY TXDOT
CONVERSION FACTOR OF 1.000136506.

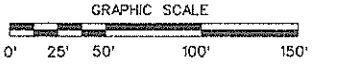
STATE OF TEXAS
VOL. 70153, PG. 0074
D.R.D.C.T.

CITY OF IRVING

STATE	FEDERAL AID PROJECT NO.	SECTION NO.	SHEET NO.
6 TEXAS		03	099
18 DALLAS	0094	03	099

ALL BEARINGS ARE ON THE TEXAS STATE PLANE
 COORDINATE SYSTEM, NAD 83 (1993 Adj.)
 NORTH CENTRAL ZONE. ALL DISTANCES AND
 COORDINATES SHOWN ARE SURFACE AND MAY
 BE CONVERTED TO GRID BY DIVIDING BY TxDOT
 CONVERSION FACTOR OF 1.000136506.

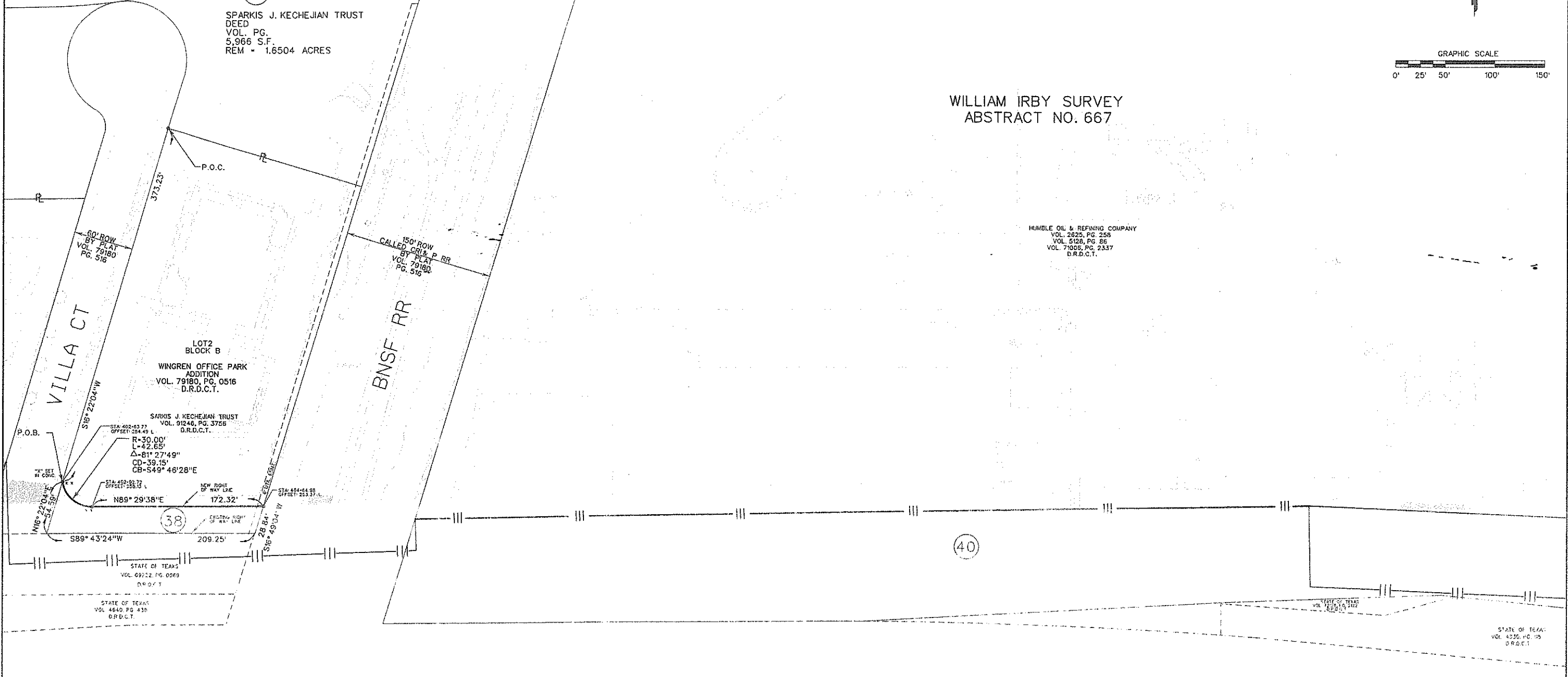
SEE SHEET NO.10 FOR PARCEL 39
 SEE SHEET NO.11 & 13 FOR PARCEL 40



38
 SPARKIS J. KECHEJIAN TRUST
 DEED
 VOL. PG.
 5,966 S.F.
 REM = 1.6504 ACRES

WILLIAM IRBY SURVEY
 ABSTRACT NO. 667

HUMBLE OIL & REFINING COMPANY
 VOL. 2625, PG. 258
 VOL. 5128, PG. 86
 VOL. 71005, PG. 2337
 D.R.D.C.T.



SH 183

WILLIAM IRBY SURVEY
 ABSTRACT NO. 667

R=11,459.00'
 L=913.81'
 Δ=4° 34' 06"

SOLOMON HUITT SURVEY
 ABSTRACT NO. 618

CITY OF IRVING

REVISED : 12-19-2005

STATE	FEDERAL AID PROJECT NO.	HIGHWAY NO.
6 TEXAS		SH 183
COUNTY	SECTION	RANGE
18 DALLAS	0094 03	099 9

STATE OF TEXAS VOL. 70153, PG. 6674 D.R.D.C.T.
 STATE OF TEXAS VOL. 4560, PG. 377 D.R.D.C.T.

STATE OF TEXAS VOL. 4865, PG. 277 D.R.D.C.T.

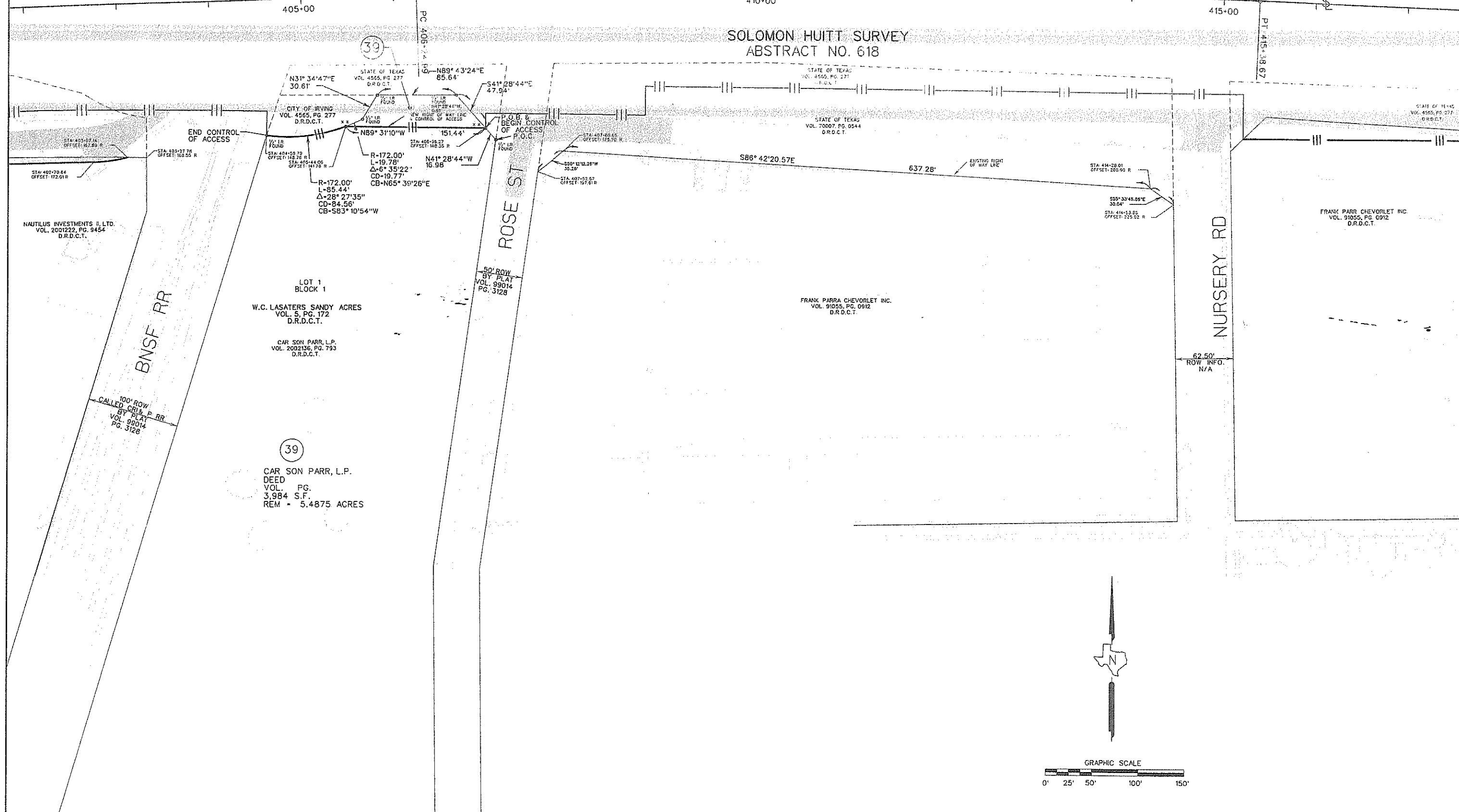
PI. 415-3067

SEE SHEET NO.11 & 13 FOR PARCEL 40
SH 183

WILLIAM IRBY SURVEY
ABSTRACT NO. 667

R-11,459.00'
L-913.68'
Δ-4°34'00"

SOLOMON HUITT SURVEY
ABSTRACT NO. 618



ALL BEARINGS ARE ON THE TEXAS STATE PLANE COORDINATE SYSTEM, NAD 83 (1993 Adj.) NORTH CENTRAL ZONE, ALL DISTANCES AND COORDINATES SHOWN ARE SURFACE AND MAY BE CONVERTED TO GRID BY DIVIDING BY TXDOT CONVERSION FACTOR OF 1.000136506.

SOLOMON HUITT SURVEY
ABSTRACT NO. 618

REVISED : 12-19-2005

CITY OF IRVING

TRF NO.	STATE	FEDERAL AID PROJECT NO.	HIGHWAY NO.	
6	TEXAS		SH 183	
STATE PROJECT NO.	COUNTY	CONTRACT NO.	SECTION NO.	SHEET NO.
18	DALLAS	0094	03 099	10

ALL BEARINGS ARE ON THE TEXAS STATE PLANE COORDINATE SYSTEM, NAD 83 (1993 Adj.) NORTH CENTRAL ZONE. ALL DISTANCES AND COORDINATES SHOWN ARE SURFACE AND MAY BE CONVERTED TO GRID BY DIVIDING BY TXDOT CONVERSION FACTOR OF 1.000136506.

SEE SHEET NO.13 FOR PART OF PARCEL 40
SEE SHEET NO. 12 FOR PARCELS 41, 42, 43 AND 44

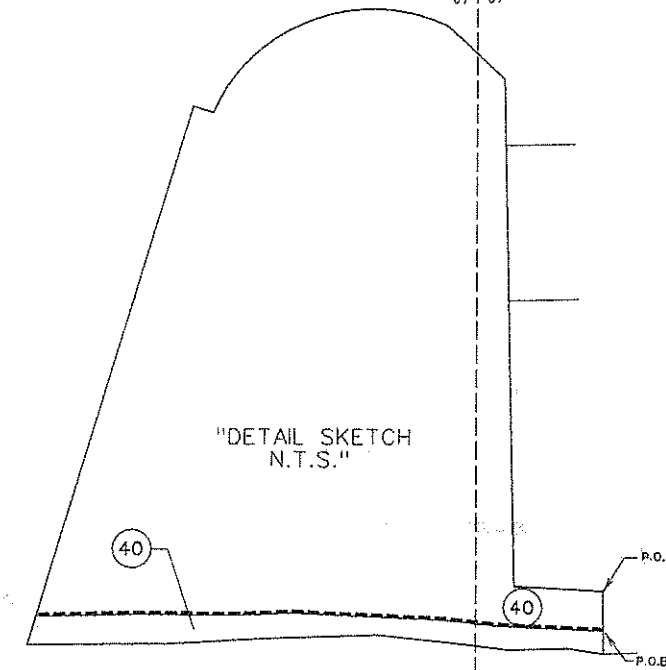


40

HUMBLE OIL AND REFINING COMPANY
DEED
VOL. PG.
171,839 S.F.
REM = 51.0711 ACRES

WILLIAM IRBY SURVEY
ABSTRACT NO. 667

HUMBLE OIL & REFINING COMPANY
VOL. 2625, PG. 258
VOL. 5128, PG. 86
VOL. 71006, PG. 2337
D.R.O.C.T.

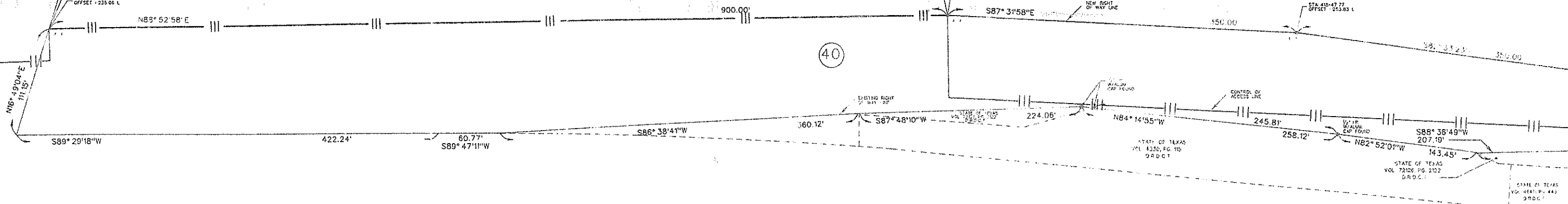


150' ROW
CALLED CR & P RR
BY PLAT
VOL. 79180
PG. 510

BNSF RR

BEGIN CONTROL
OF ACCESS
STA 410+00.00
OFFSET 253.83 L

END CONTROL
OF ACCESS



SH 183

WILLIAM IRBY SURVEY
ABSTRACT NO. 667

R=11,459.00'
L=913.68'
Δ=4° 34' 06"

SH 183

SOLOMON HUITT SURVEY
ABSTRACT NO. 618

STATE OF TEXAS
VOL. 4588, PG. 277
D.R.O.C.T.

REVISED : 02-20-2006
REVISED : 02-07-2006
REVISED : 12-19-2005

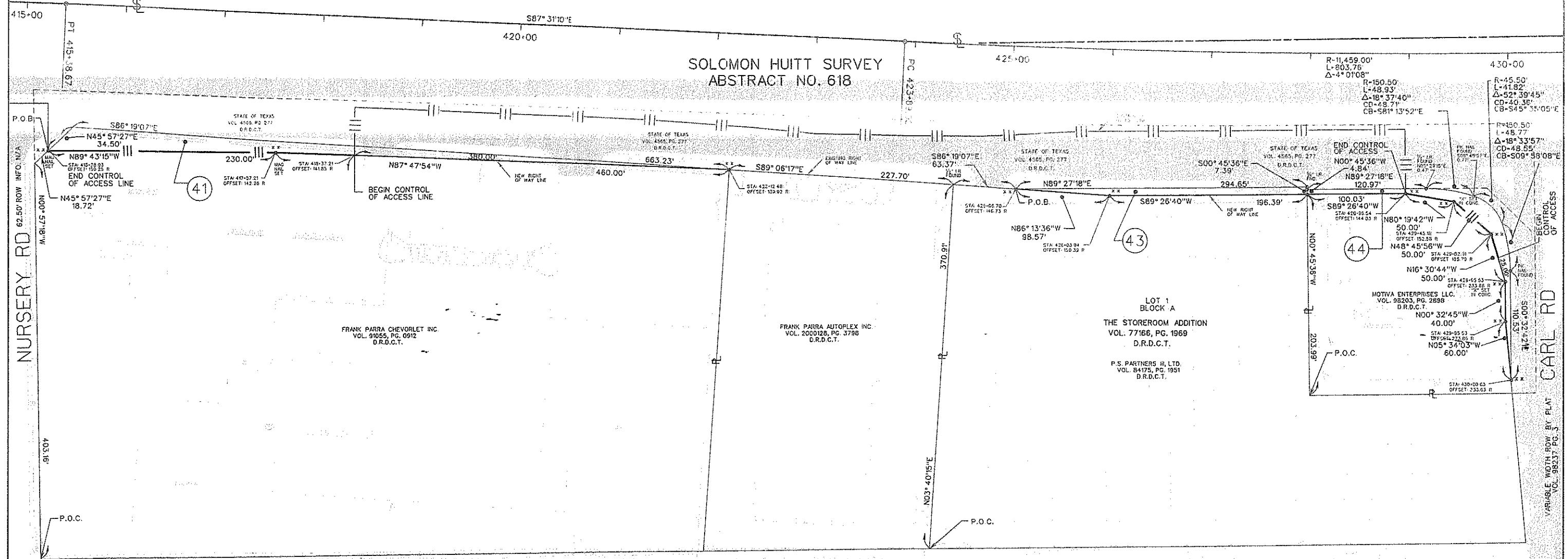
TWP. NO.	STATE	FEDERAL NO. PROJECT NO.	SECTION NO.	SHEET NO.
6	TEXAS			SH 183
18	DALLAS	0094	03 099	11

CITY OF IRVING

STATE OF TEXAS
VOL. 1885, PG. 177
D.R.O.C.T.

STATE OF TEXAS

SEE SHEET NO. 13 FOR PARCELS
SH 183 40, 45 AND 46 WILLIAM IRBY SURVEY
ABSTRACT NO. 667



41
FRANK PARRA
CHEVROLET, INC.
DEED
VOL. PG.
6,729 S.F.
REM = 6.3703 ACRES

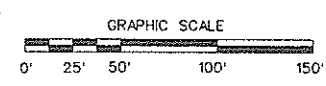
43
P.S. PARTNERS III, LTD
DEED
VOL. PG.
1,819 S.F.
REM = 3.8600 ACRES

44
MOTIVA ENTERPRISES LLC
DEED
VOL. PG.
2,868 S.F.
REM = 0.8948 ACRES

42
DELETED



SOLOMON HUITT SURVEY
ABSTRACT NO. 618



REVISED : 02-20-2006
REVISED : 02-07-2006
REVISED : 12-19-2005

ALL BEARINGS ARE ON THE TEXAS STATE PLANE
COORDINATE SYSTEM, NAD, 83 (1993 Adj.)
NORTH CENTRAL ZONE. ALL DISTANCES AND
COORDINATES SHOWN ARE SURFACE AND MAY
BE CONVERTED TO GRID BY DIVIDING BY TXDOT
CONVERSION FACTOR OF 1.000136506.

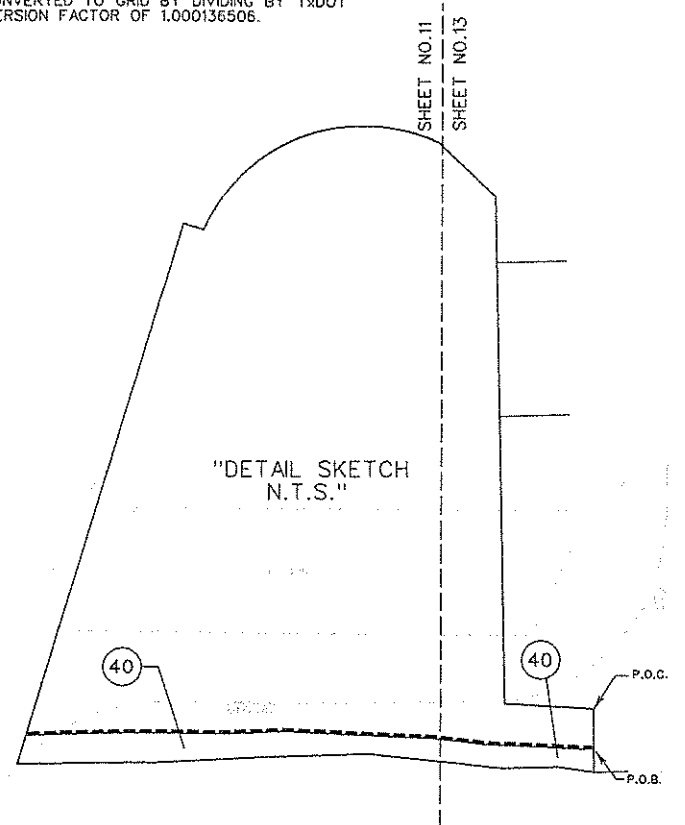
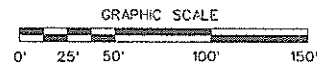
CITY OF IRVING

STATE	FEDERAL AID PROJECT NO.	HIGHWAY NO.
TEXAS		SH 183
COUNTY	SECTION	BLK NO.
DALLAS	0094 03 099	12

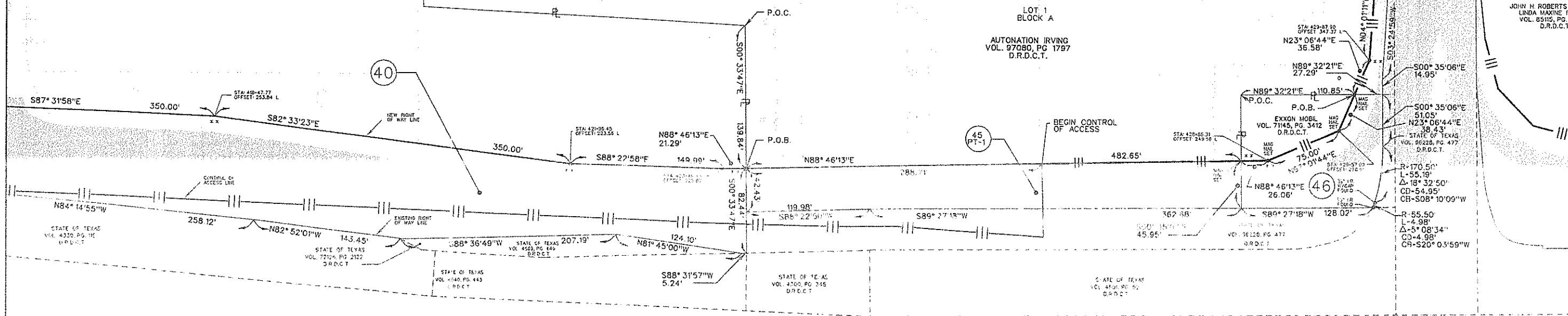
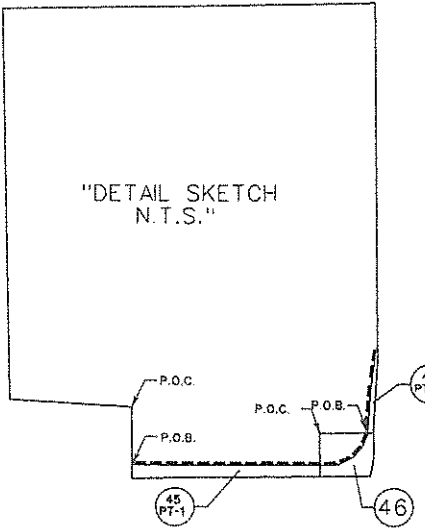
ALL BEARINGS ARE ON THE TEXAS STATE PLANE COORDINATE SYSTEM, NAD 83 (1993 Adj.) NORTH CENTRAL ZONE. ALL DISTANCES AND COORDINATES SHOWN ARE SURFACE AND MAY BE CONVERTED TO GRID BY DIVIDING BY TxDOT CONVERSION FACTOR OF 1.000136506.

WILLIAM IRBY SURVEY
ABSTRACT NO. 667

SEE SHEET NO. 12 FOR PARCELS
41, 42, 43 AND 44



- (40) HUMBLE OIL AND REFINING COMPANY DEED VOL. PG. 171,839 S.F. (3.9449 AC.) REM = 51.0711 ACRES
- (45) FRED OAKLEY MOTORS DEED VOL. PG. PART 1 - 20,920 S.F. PART 2 - 2,832 S.F. TOTAL 23,752 S.F. REM = 24.7447 ACRES
- (46) EXXON MOBIL CORP. DEED VOL. PG. 9,645 S.F. REM = 0.1165 ACRES



CARL RD
80' ROW
BY PLAT
VOL. 97-8
PG. 01797

JOHN H. ROBERTS and wife,
LINDA MAXINE ROBERTS
VOL. 6515, PG. 6244
D.R.D.C.T.

FRED OAKLEY MOTORS, INC.
VOL. 2003061, PG. 10715
D.R.D.C.T.

LOT 1
BLOCK A
AUTONATION IRVING
VOL. 97080, PG. 1797
D.R.D.C.T.

EXXON MOBIL
VOL. 71145, PG. 3412
D.R.D.C.T.

STATE OF TEXAS
VOL. 96228, PG. 477
D.R.D.C.T.

STATE OF TEXAS
VOL. 96228, PG. 477
D.R.D.C.T.

STATE OF TEXAS
VOL. 96228, PG. 477
D.R.D.C.T.

STATE OF TEXAS
VOL. 96228, PG. 477
D.R.D.C.T.

STATE OF TEXAS
VOL. 96228, PG. 477
D.R.D.C.T.

STATE OF TEXAS
VOL. 96228, PG. 477
D.R.D.C.T.

STATE OF TEXAS
VOL. 96228, PG. 477
D.R.D.C.T.

STATE OF TEXAS
VOL. 96228, PG. 477
D.R.D.C.T.

STATE OF TEXAS
VOL. 96228, PG. 477
D.R.D.C.T.

STATE OF TEXAS
VOL. 96228, PG. 477
D.R.D.C.T.

STATE OF TEXAS
VOL. 96228, PG. 477
D.R.D.C.T.

STATE OF TEXAS
VOL. 96228, PG. 477
D.R.D.C.T.

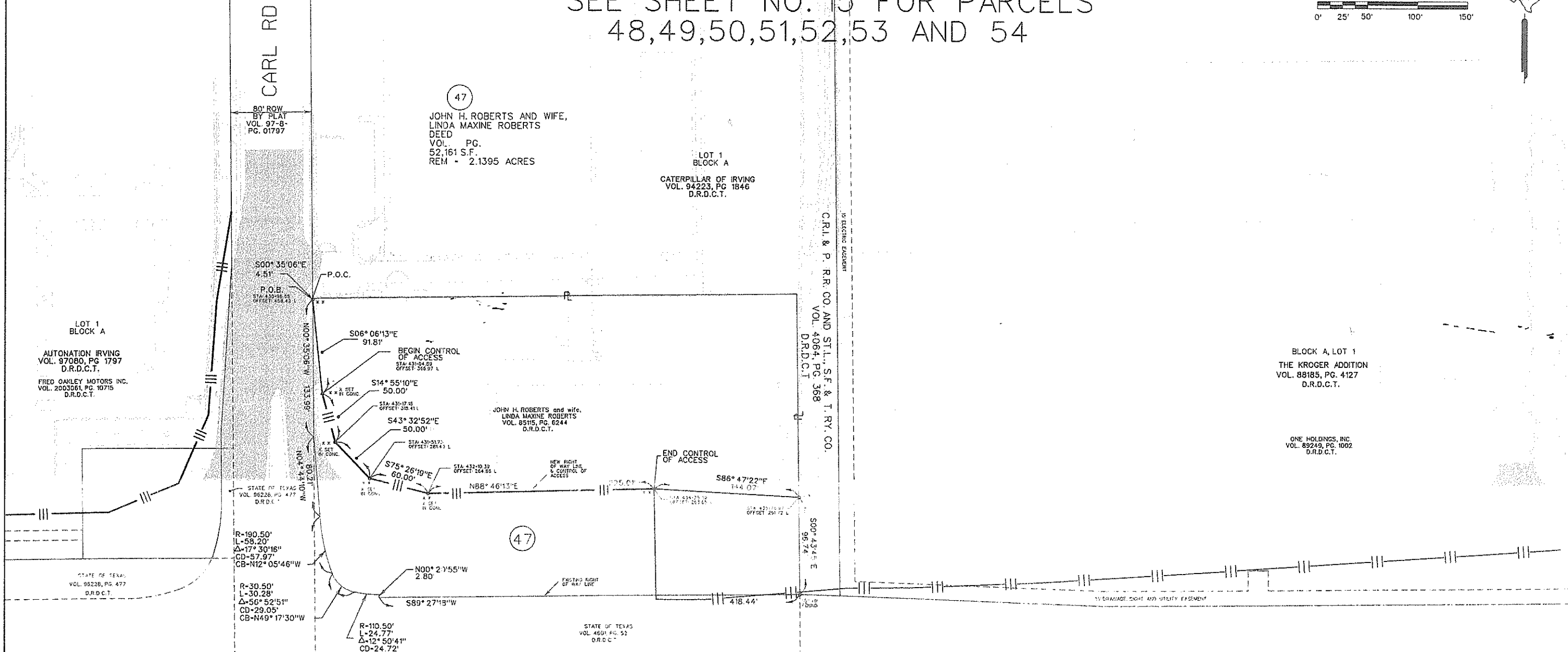
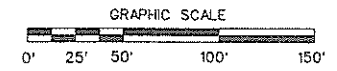
STATE OF TEXAS
VOL. 96228, PG. 477
D.R.D.C.T.

TITLE	STATE	FEDERAL AID PROJECT NO.	HIGHWAY NO.
6	TEXAS		SH 183
STATE DISTRICT NO.	COUNTY	SECTION NO.	SHEET NO.
18	DALLAS	0094	03 099 13

ALL BEARINGS ARE ON THE TEXAS STATE PLANE COORDINATE SYSTEM, NAD 83 (1993 Adj.) NORTH CENTRAL ZONE. ALL DISTANCES AND COORDINATES SHOWN ARE SURFACE AND MAY BE CONVERTED TO GRID BY DIVIDING BY TxDOT CONVERSION FACTOR OF 1.000136506.

WILLIAM IRBY SURVEY
ABSTRACT NO. 667

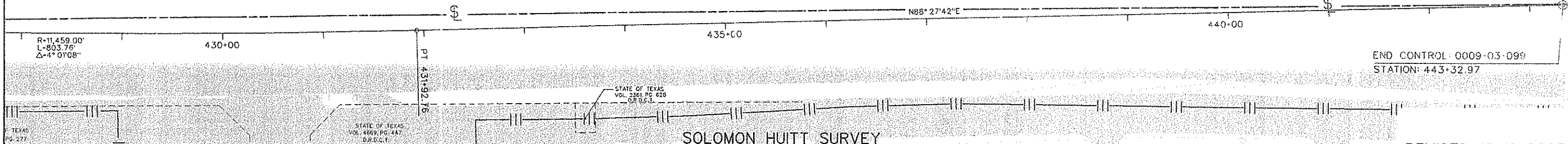
SEE SHEET NO. 15 FOR PARCELS
48, 49, 50, 51, 52, 53 AND 54



WILLIAM IRBY SURVEY
ABSTRACT NO. 667

SH 183

SH 183

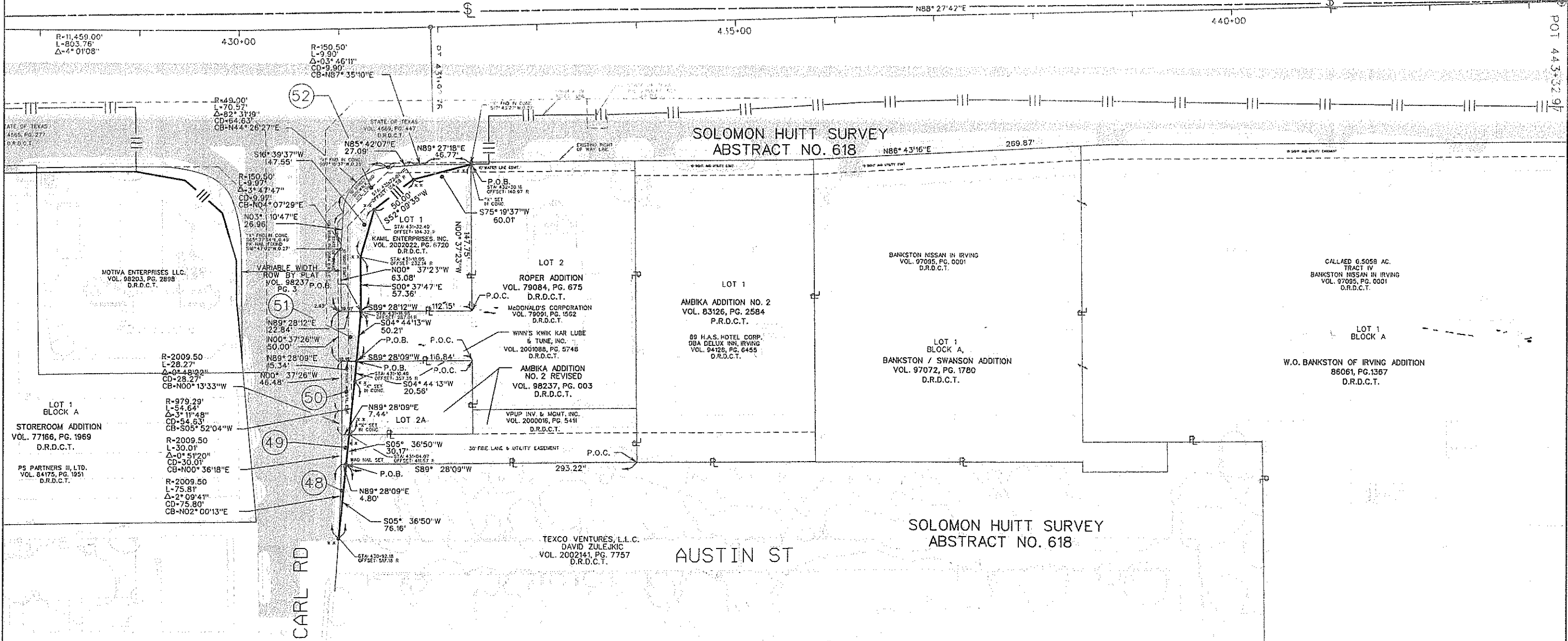


SOLOMON HUITT SURVEY
ABSTRACT NO. 618

REVISED 12-19-2005

CITY OF IRVING

CD No.	STATE	FEDERAL AID PROJECT NO.	SECTION NO.
6	TEXAS		SH 183
SHEET NO.	COUNTY	CONTRACT NO.	SHEET NO.
18	DALLAS	0094 03 099	14



(48) TEXCO VENTURES, L.L.C.
AND DAVID ZULEJKIC
DEED
VOL. PG.
164 S.F.
REM = 6.9402 ACRES

(49) VPUP INV. & MGMT. INC.
DEED
VOL. PG.
182 S.F.
REM = 0.2946 ACRES

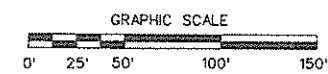
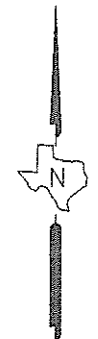
(50) WINN'S KWIK KAR
LUBE & TUNE, INC.
DEED
VOL. PG.
871 S.F.
REM = 0.2069 ACRES

(51) McDONALD'S CORPORATION
DEED
VOL. PG.
1,025 S.F.
REM = 1.0784 ACRES

(52) KAMIL ENTERPRISES, INC.
DEED
VOL. PG.
4,697 S.F.
REM = 0.3215 ACRES

(53) DELETED

(54) DELETED



REVISED : 02-20-2006
REVISED : 02-07-2006
REVISED : 12-19-2005

ALL BEARINGS ARE ON THE TEXAS STATE PLANE
COORDINATE SYSTEM, NAD, 83 (1993 Ad),
NORTH CENTRAL ZONE. ALL DISTANCES AND
COORDINATES SHOWN ARE SURFACE AND MAY
BE CONVERTED TO GRID BY DIVIDING BY TXDOT
CONVERSION FACTOR OF 1.000136506.

SOLOMON HITT SURVEY
ABSTRACT NO. 618

CITY OF IRVING

STATE	COUNTY	PROJECT NO.	SECTION	BLK	SHEET NO.
6	TEXAS	0094	03	099	15