

APPENDIX A: Maps

Figure 1: IH 35E Corridor Improvement Map

Figure 2: Project Location Map

Figure 3: FEMA Floodplain and USGS Quadrangle Maps

Figure 4: Tree Removal Maps

Figure 5: Mobile Source Air Toxics (MSAT) Sensitive Receptors

**Figure 6: Mobile Source Air Toxics (MSAT) Affected
Transportation Network**

Figure 7: 2000 Census Blocks

Figure 8: Census Block Groups and Displacements

**Figure 9: Traffic Serial Zones (TSZ) and Environmental Justice (EJ)
Population – Build Scenario**

**Figure 10: Traffic Serial Zones (TSZ) and Environmental Justice (EJ)
Population – No-Build Scenario**

**Figure 11: Traffic Serial Zone (TSZ) Number of Trips for the Build
Scenario (2030 AM Peak)**

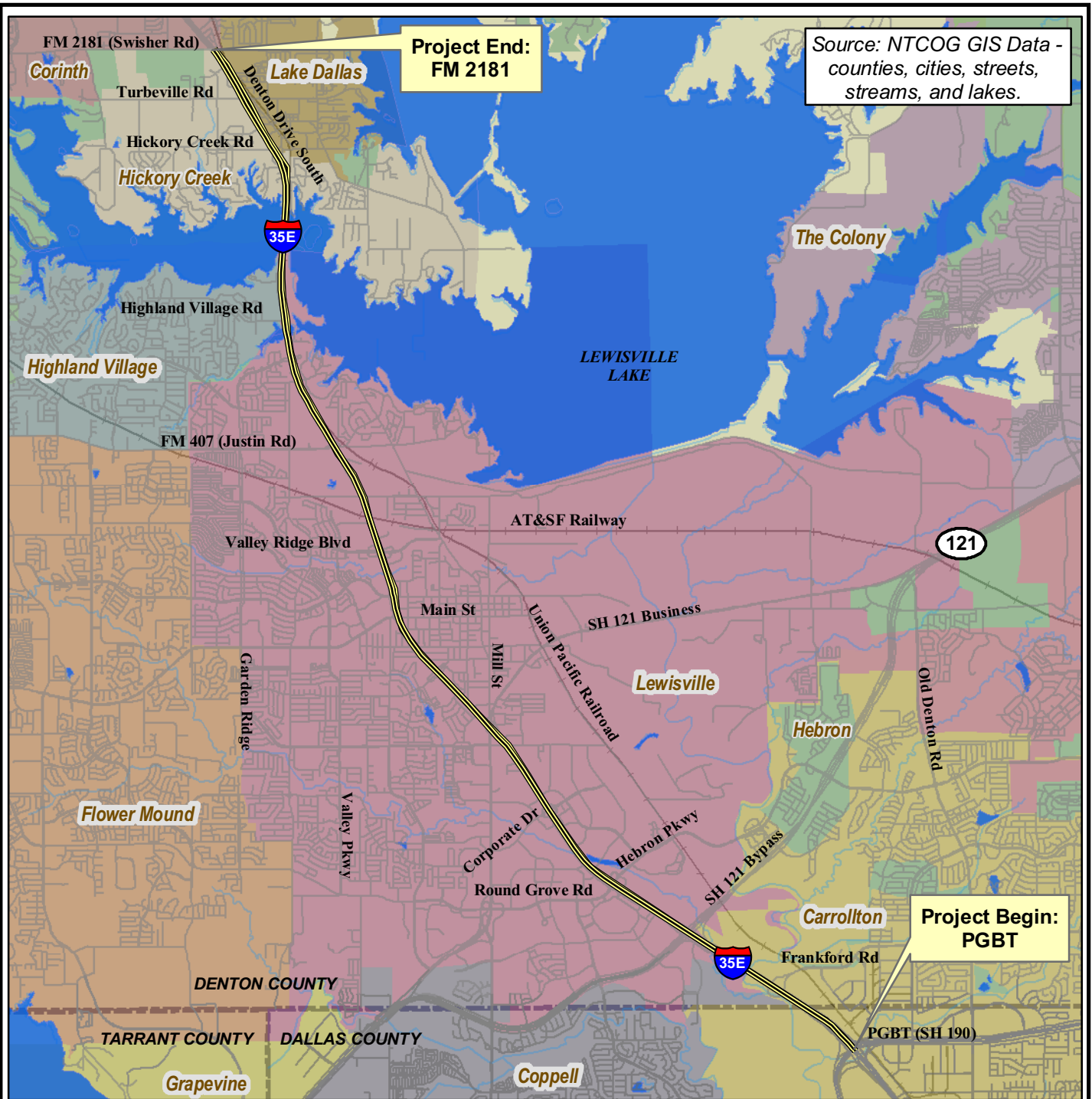
**Figure 12: Number of Trips per Environmental Justice (EJ) Traffic
Serial Zone (EJ TSZ) – Build Scenario**

Figure 13: USACE Property Boundary Maps

Figure 14: Lewisville Lake Buoy Plan

Figure 15: Indirect Impacts Area of Influence

Figure 16: Cumulative Impacts Analysis Study Area



0 0.5 1 1.5 2 Miles

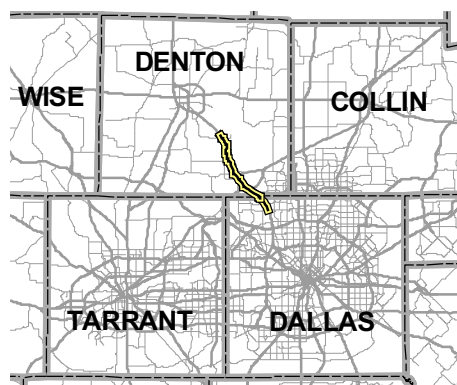
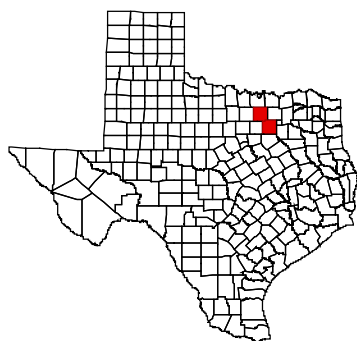


FIGURE 2 PROJECT LOCATION MAP

IH 35E
PGBT to FM 2181

DALLAS AND DENTON
COUNTIES, TEXAS

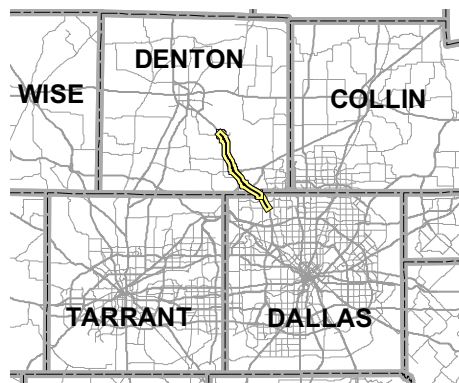
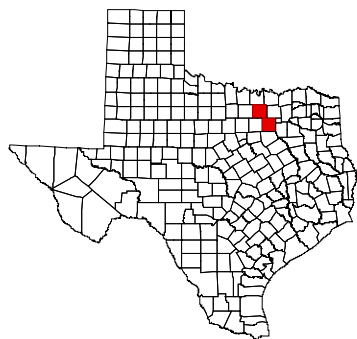
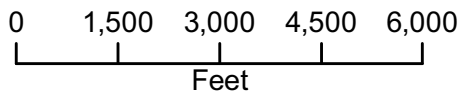
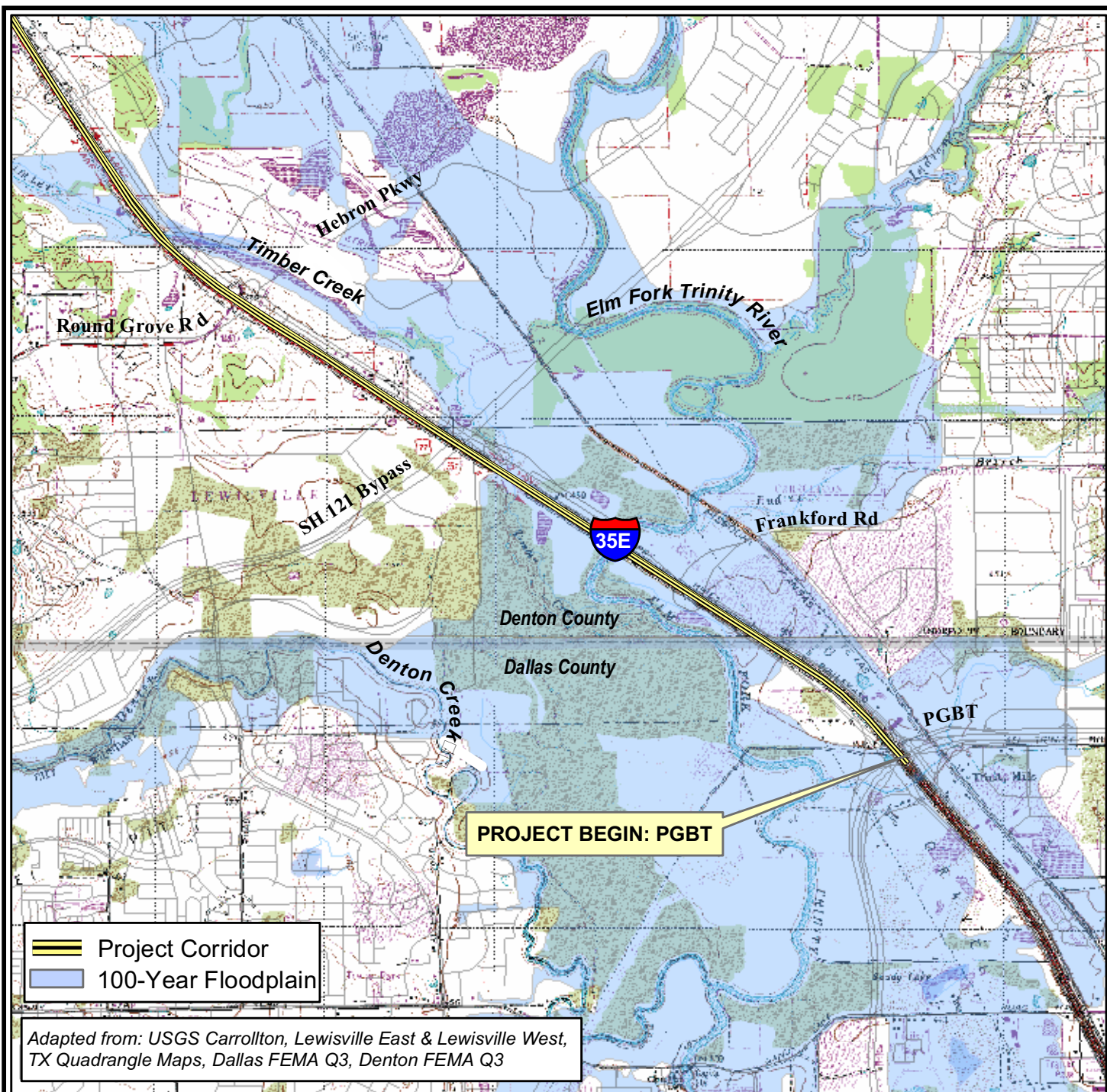
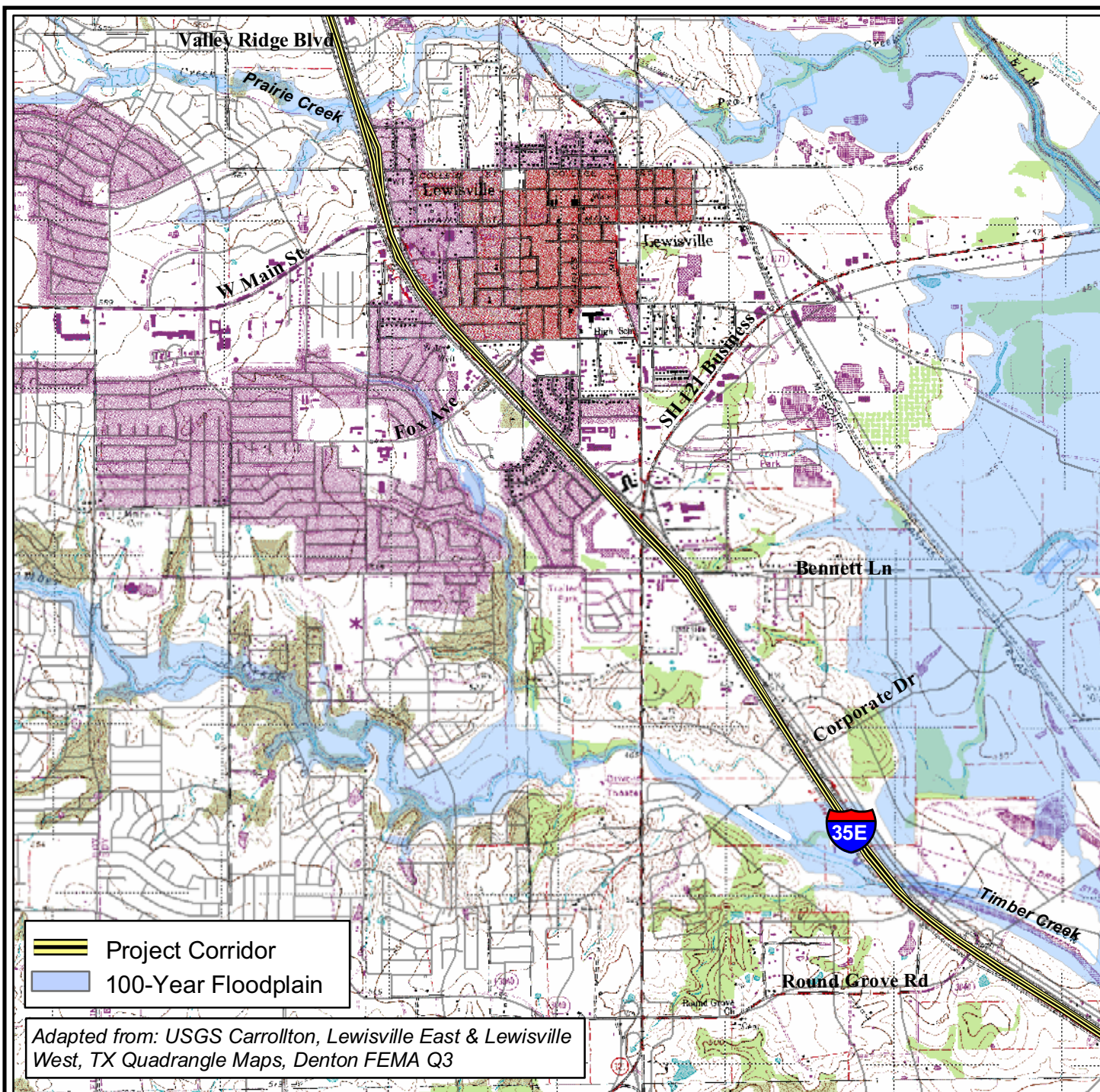


FIGURE 3
FEMA FLOODPLAIN and USGS
QUADRANGLE MAPS
SHEET 1 of 4

IH 35E
 PGBT to FM 2181

ENVIRONMENTAL ASSESSMENT
 DALLAS AND
 DENTON COUNTIES, TEXAS



0 1,500 3,000 4,500 6,000
Feet



Texas Department of Transportation

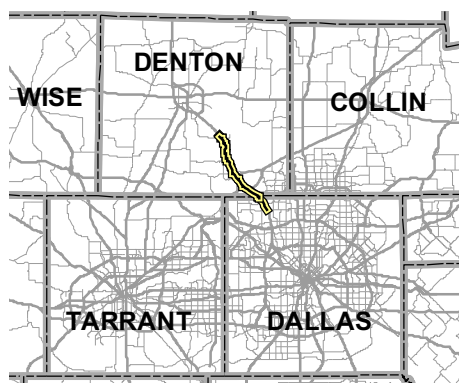
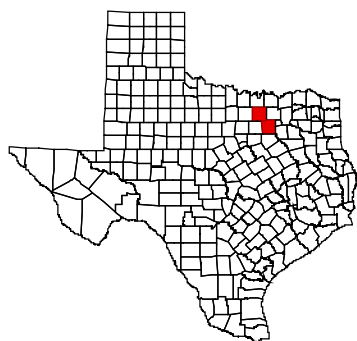


FIGURE 3
FEMA FLOODPLAIN and USGS
QUADRANGLE MAPS
SHEET 2 of 4

IH 35E
PGBT to FM 2181

ENVIRONMENTAL ASSESSMENT
DALLAS AND
DENTON COUNTIES, TEXAS

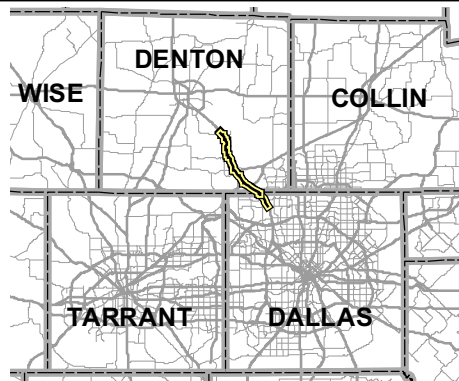
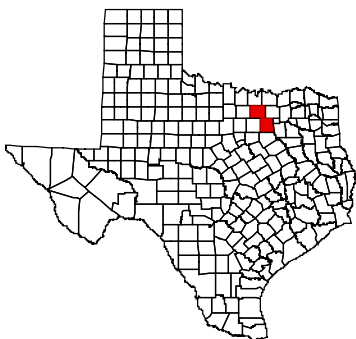
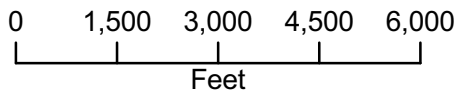
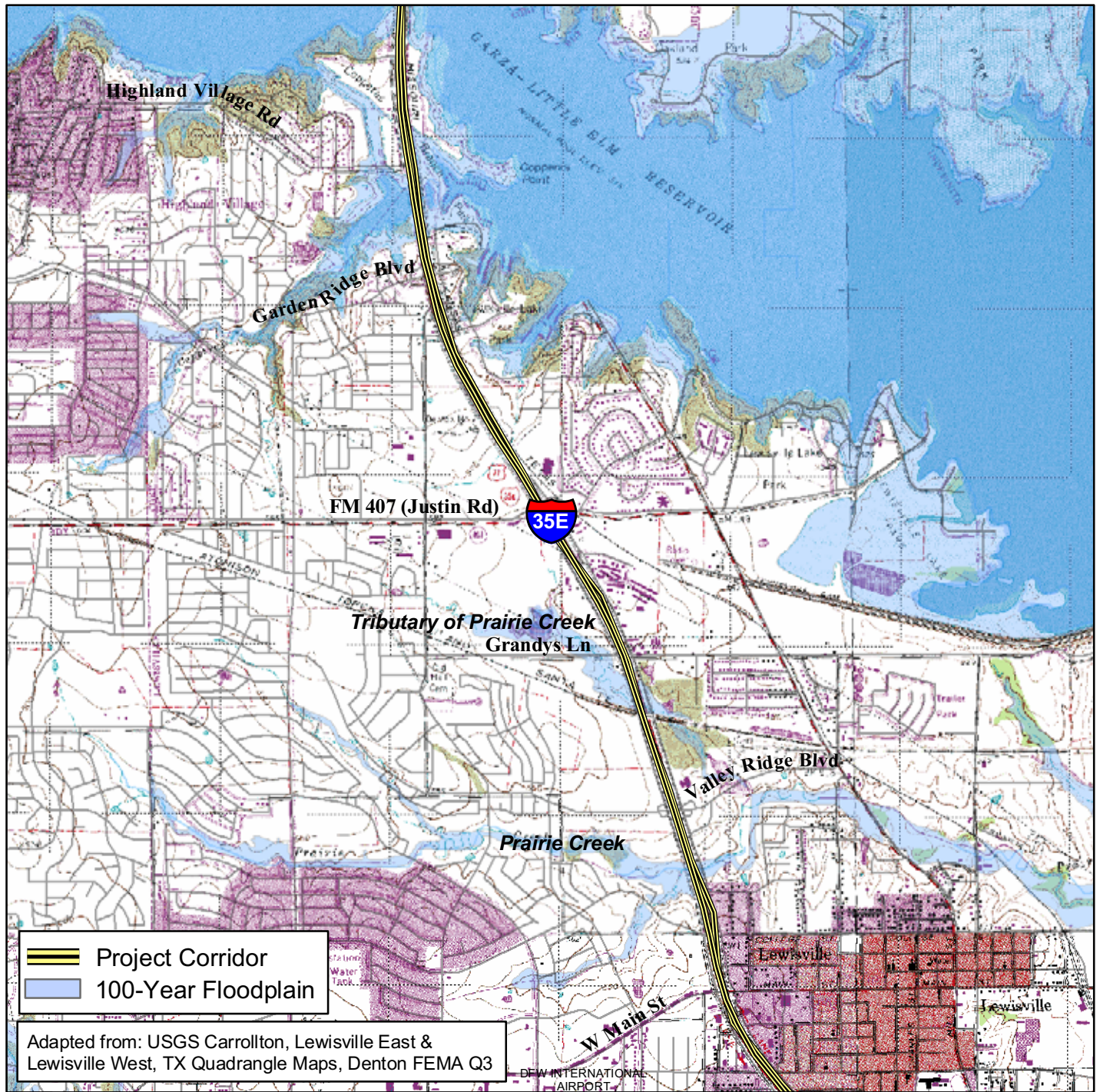


FIGURE 3
FEMA FLOODPLAIN and USGS
QUADRANGLE MAPS
SHEET 3 of 4

IH 35E
 PGBT to FM 2181

ENVIRONMENTAL ASSESSMENT
 DALLAS AND
 DENTON COUNTIES, TEXAS



0 1,500 3,000 4,500 6,000
Feet

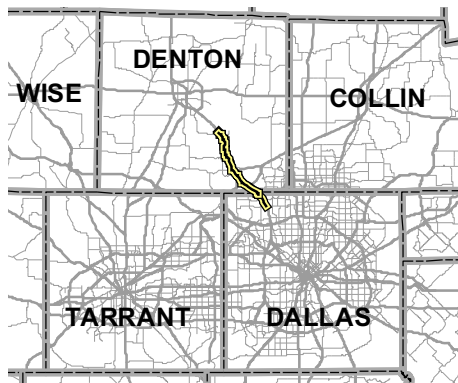
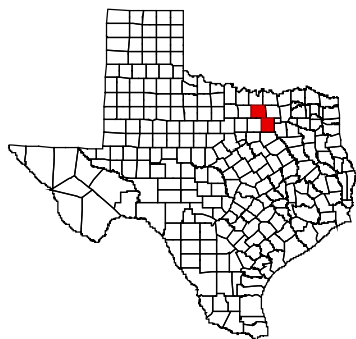
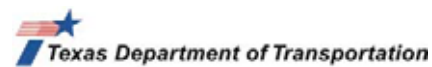
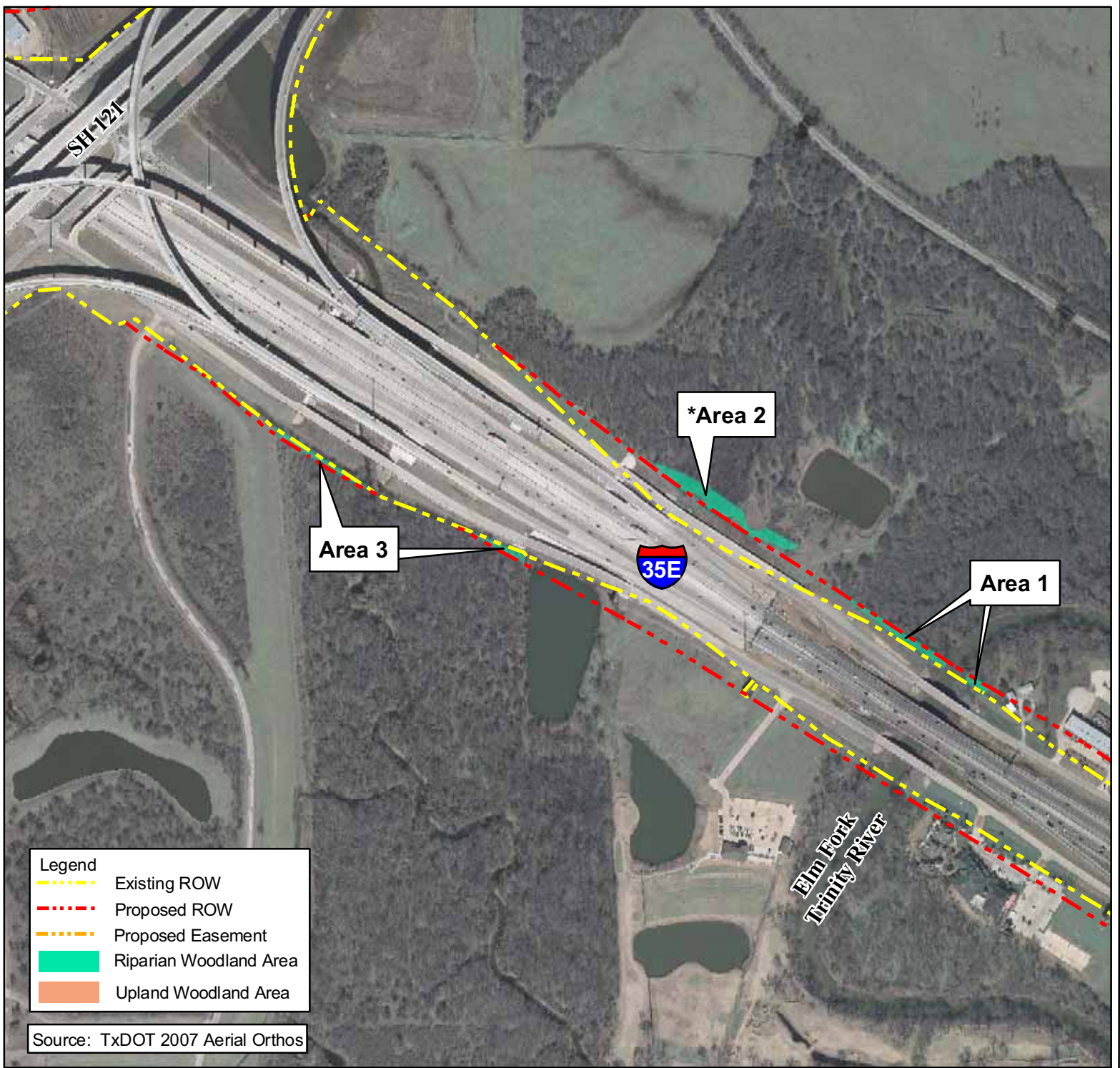


FIGURE 3
FEMA FLOODPLAIN and USGS
QUADRANGLE MAPS
SHEET 4 of 4

IH 35E
 PGBT to FM 2181

ENVIRONMENTAL ASSESSMENT
 DALLAS AND
 DENTON COUNTIES, TEXAS



0 200 400 600 Feet

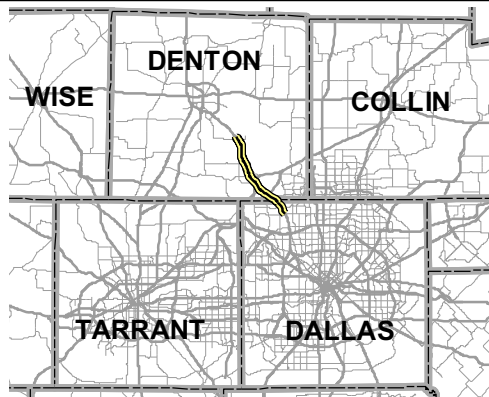
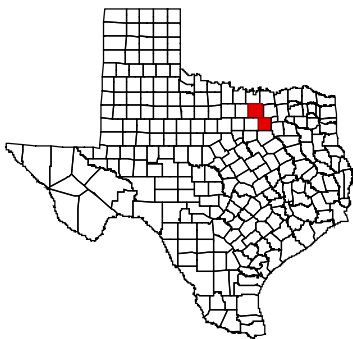


FIGURE 4 TREE REMOVAL MAPS SHEET 1 of 9

IH 35E
PGBT to FM 2181

ENVIRONMENTAL ASSESSMENT
DALLAS AND
DENTON COUNTIES, TEXAS

*Woodland Area 2 is no longer impacted due to the change in the proposed ROW. Therefore, this area is not included in the woodland acreage that would be impacted.



0 200 400 600 Feet

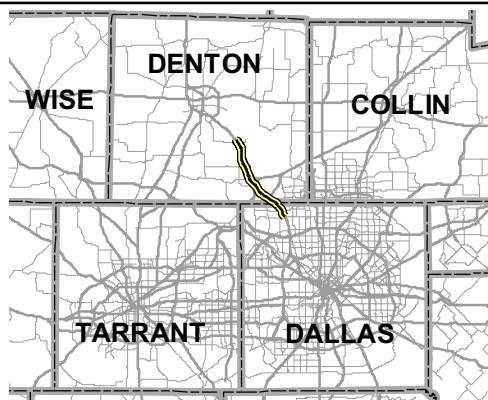
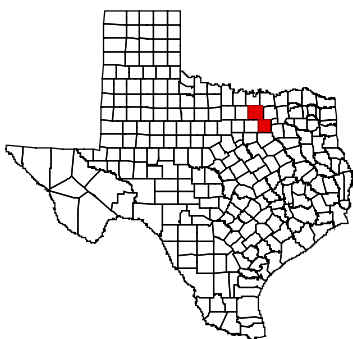
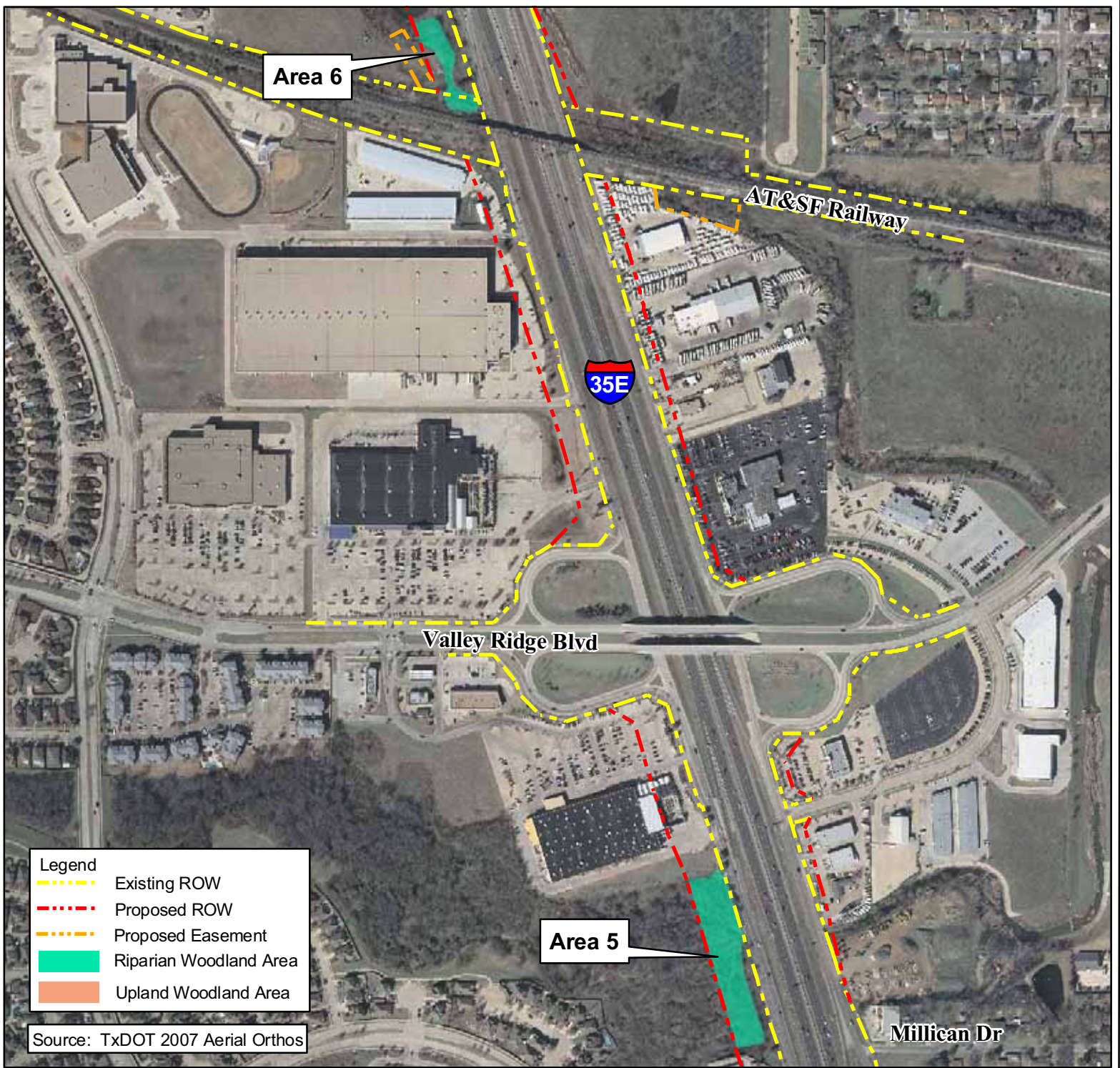


FIGURE 4 TREE REMOVAL MAPS SHEET 2 of 9

IH 35E
PGBT to FM 2181

ENVIRONMENTAL ASSESSMENT
DALLAS AND
DENTON COUNTIES, TEXAS



0 200 400 600 Feet



Texas Department of Transportation

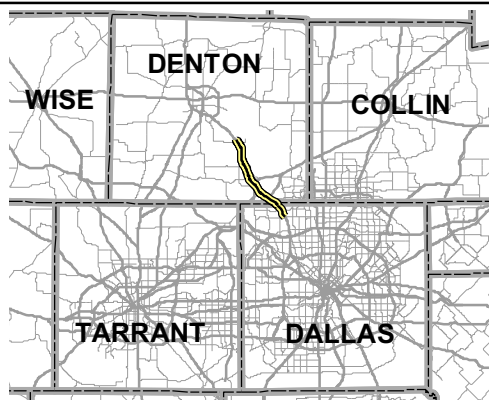
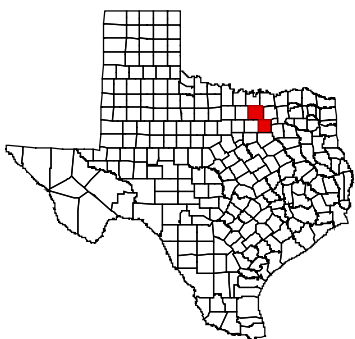


FIGURE 4 TREE REMOVAL MAPS SHEET 3 of 9

IH 35E
PGBT to FM 2181

ENVIRONMENTAL ASSESSMENT
DALLAS AND
DENTON COUNTIES, TEXAS



0 200 400 600 Feet

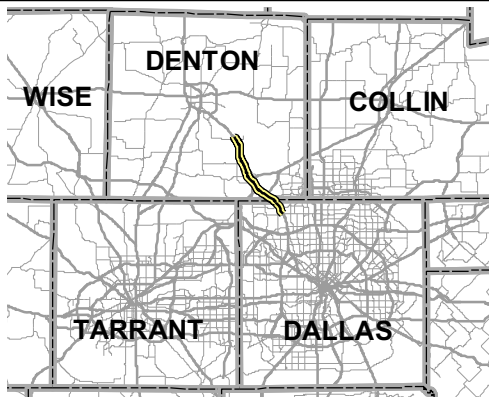
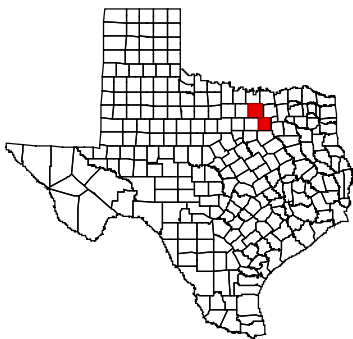


FIGURE 4 TREE REMOVAL MAPS SHEET 4 of 9

IH 35E
PGBT to FM 2181

ENVIRONMENTAL ASSESSMENT
DALLAS AND
DENTON COUNTIES, TEXAS



0 200 400 600 Feet

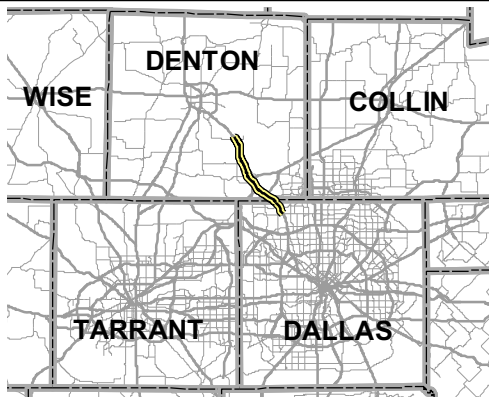
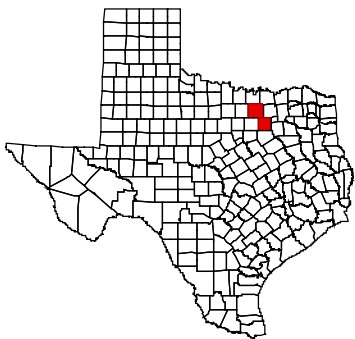


FIGURE 4 TREE REMOVAL MAPS SHEET 5 of 9

IH 35E
PGBT to FM 2181

ENVIRONMENTAL ASSESSMENT
DALLAS AND
DENTON COUNTIES, TEXAS



0 200 400 600 Feet

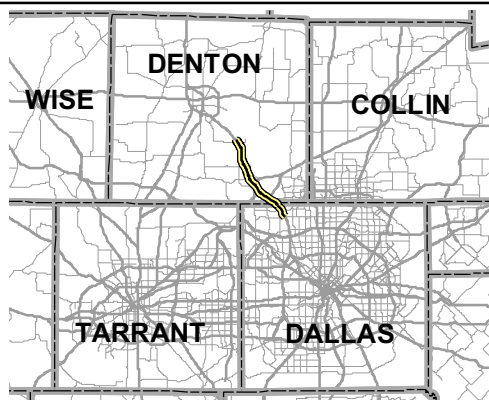
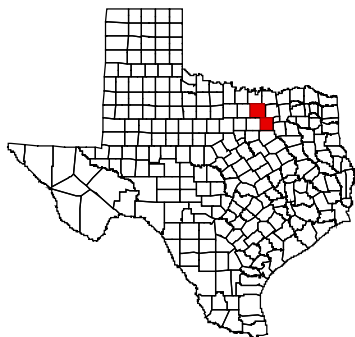
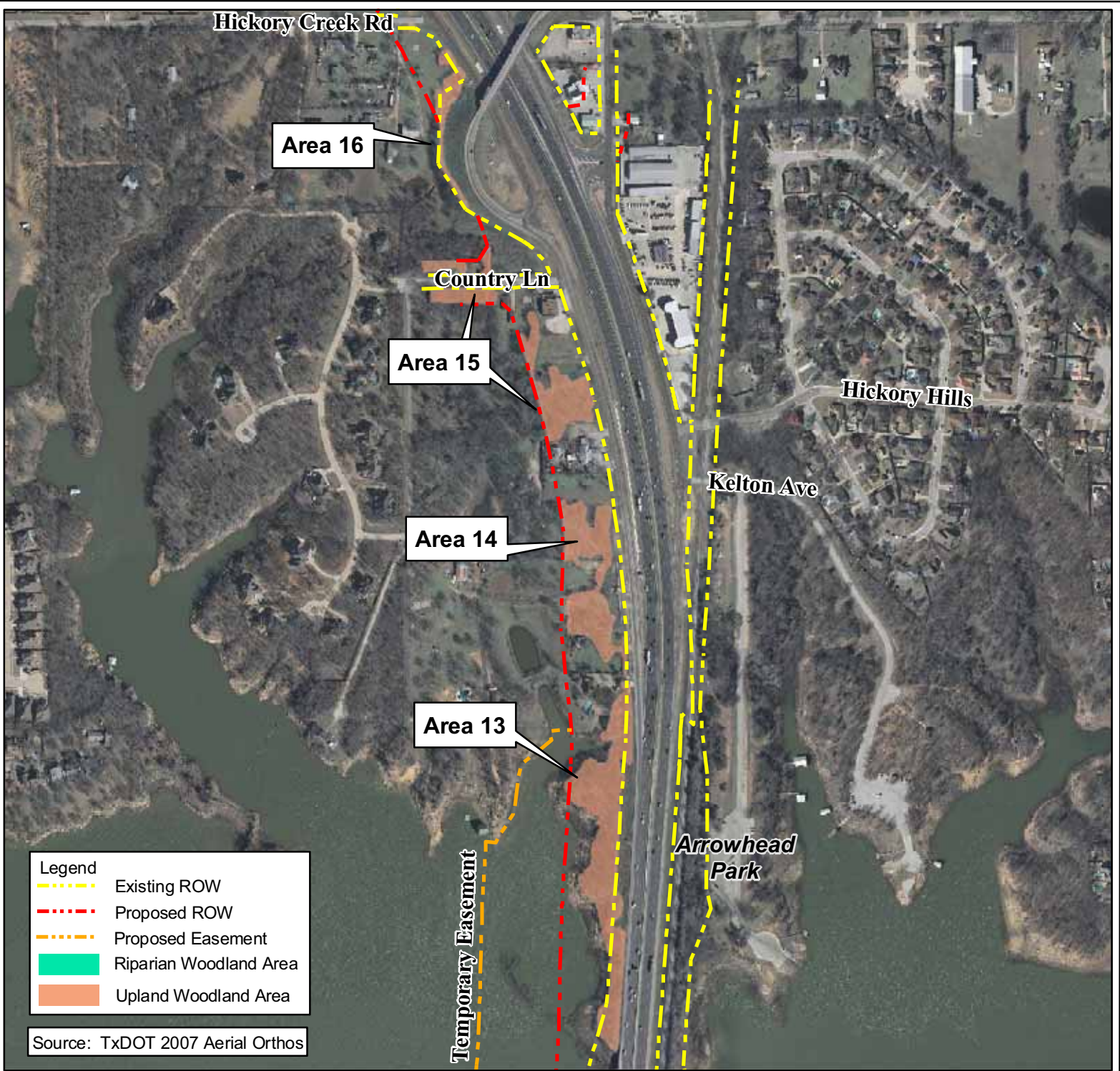


FIGURE 4 TREE REMOVAL MAPS SHEET 6 of 9

IH 35E
PGBT to FM 2181

ENVIRONMENTAL ASSESSMENT
DALLAS AND
DENTON COUNTIES, TEXAS



0 200 400 600 Feet

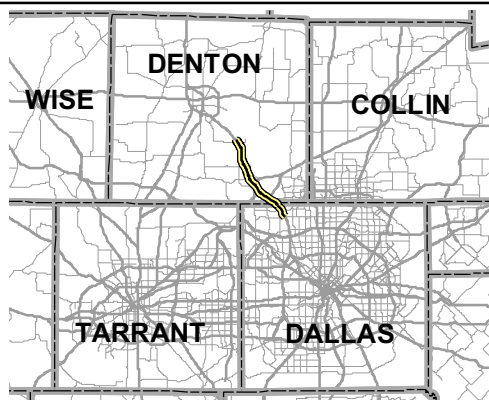
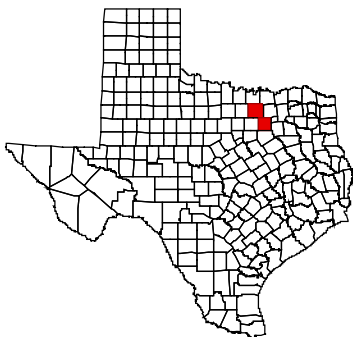


FIGURE 4 TREE REMOVAL MAPS SHEET 7 of 9

IH 35E
PGBT to FM 2181

ENVIRONMENTAL ASSESSMENT
DALLAS AND
DENTON COUNTIES, TEXAS



0 200 400 600 Feet

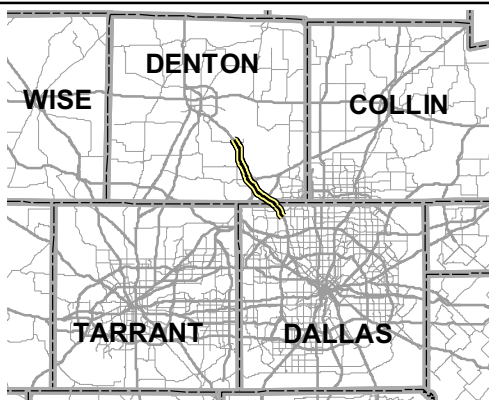
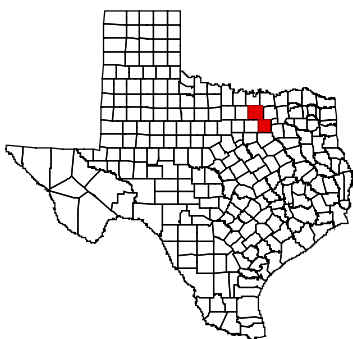
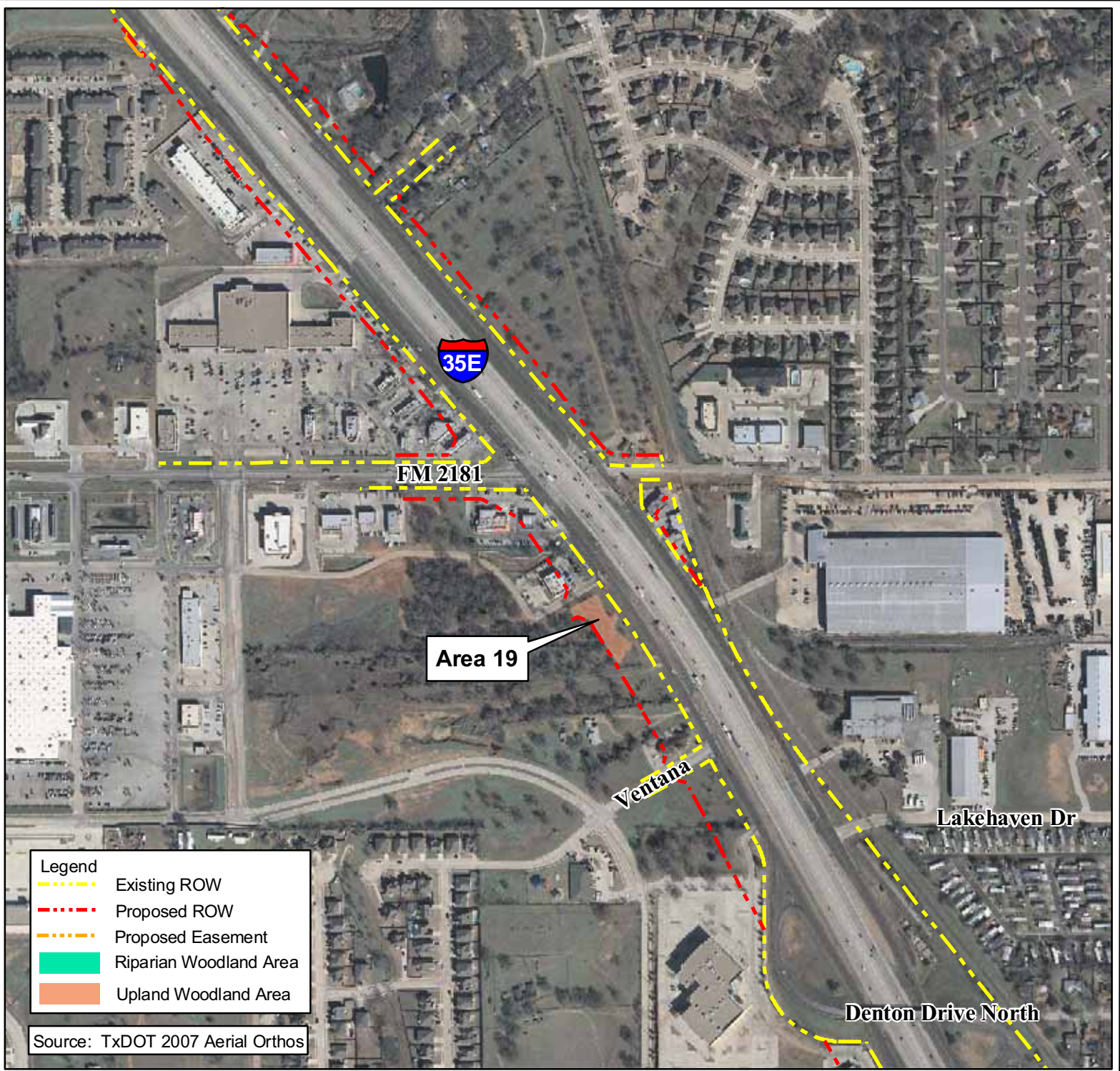


FIGURE 4 TREE REMOVAL MAPS SHEET 8 of 9

IH 35E
PGBT to FM 2181

ENVIRONMENTAL ASSESSMENT
DALLAS AND
DENTON COUNTIES, TEXAS



0 200 400 600 Feet



Texas Department of Transportation

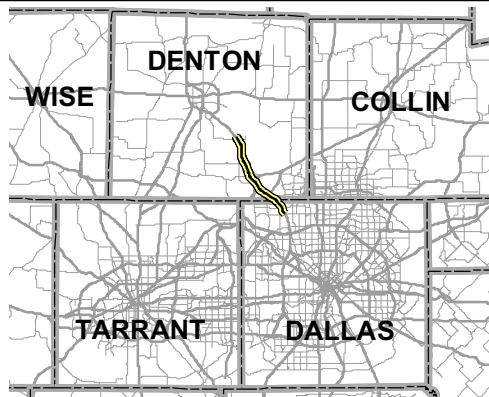
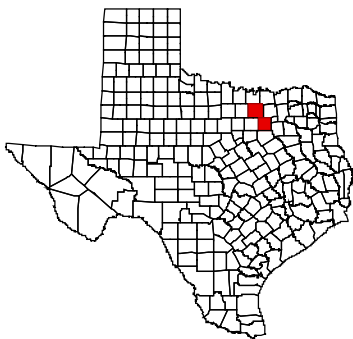


FIGURE 4 TREE REMOVAL MAPS SHEET 9 of 9

IH 35E
PGBT to FM 2181

ENVIRONMENTAL ASSESSMENT
DALLAS AND
DENTON COUNTIES, TEXAS