

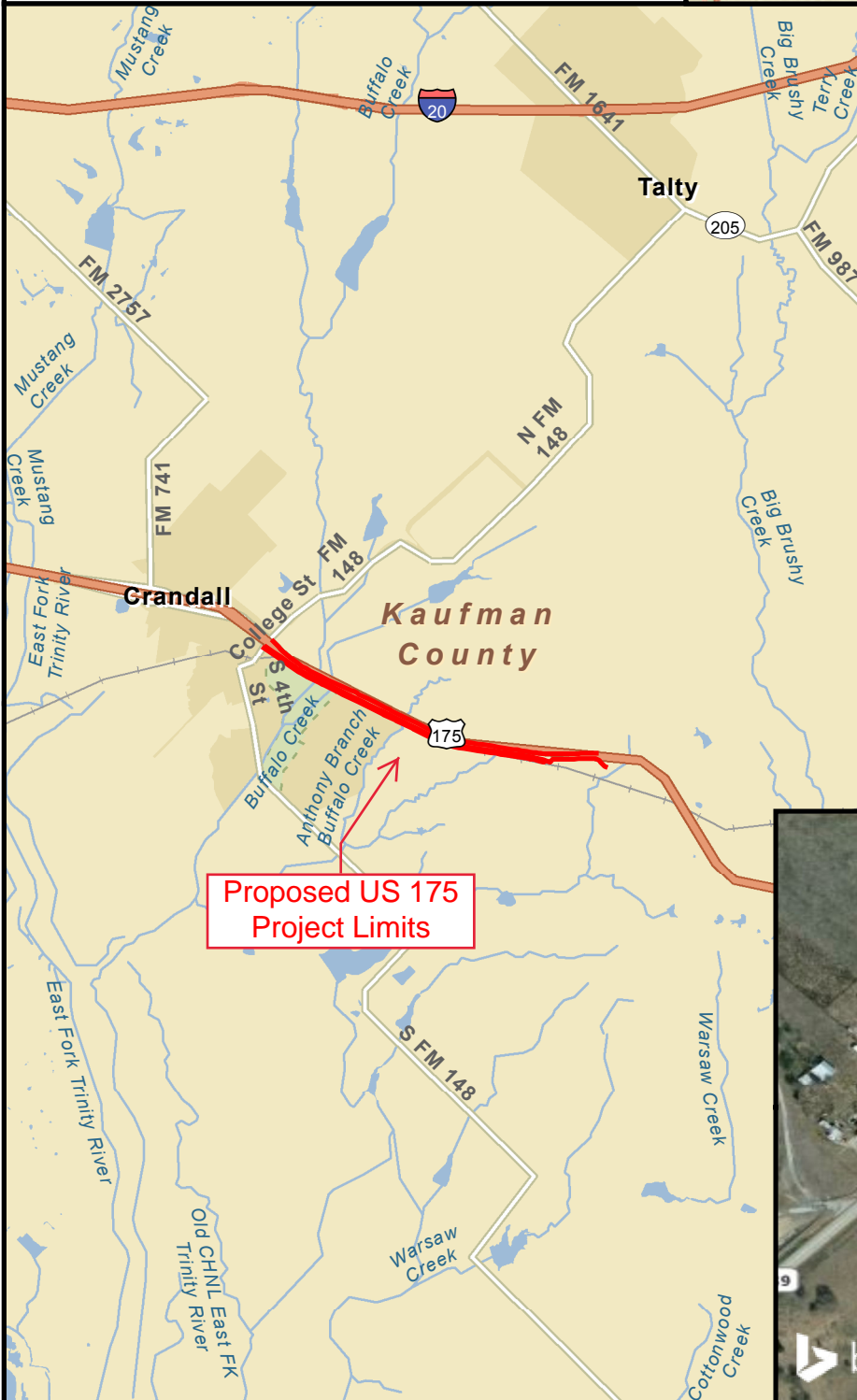


Texas Department of Transportation

US 175 Public Meeting

Location: Crandall High School Cafeteria
13385 FM 3039
Crandall, TX 75114

Thursday, June 29, 2017
Open House 6:00 PM to 8:00 PM



Proposed US 175 Project Limits

Directions:

From North:
head southeast on US 175
take exit toward Crandall/FM 148,
merge onto US 175 Frontage Road,
turn right onto College Street,
turn right onto Church Street,
turn left onto 4th Street,
turn right onto Lewis Street,
after driving approximately 0.2-mile,
Crandall High School is on the left.

From South:
head northwest on US 175
take exit toward Crandall/FM 148,
merge onto US 175 Frontage Road,
turn left onto College Street,
turn right onto Church Street,
turn left onto 4th Street,
turn right onto Lewis Street,
after driving approximately 0.2-mile,
Crandall High School is on the left.

