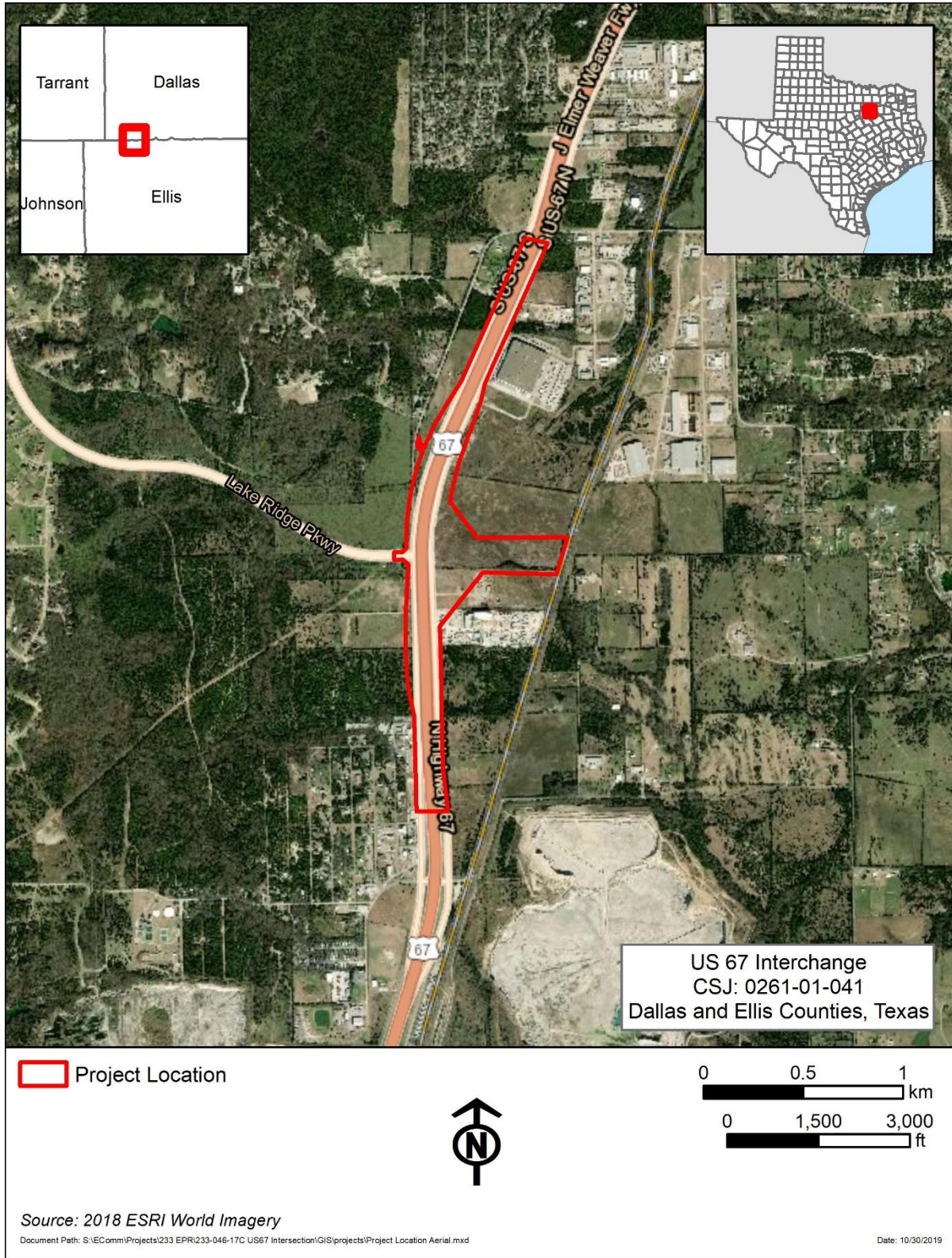
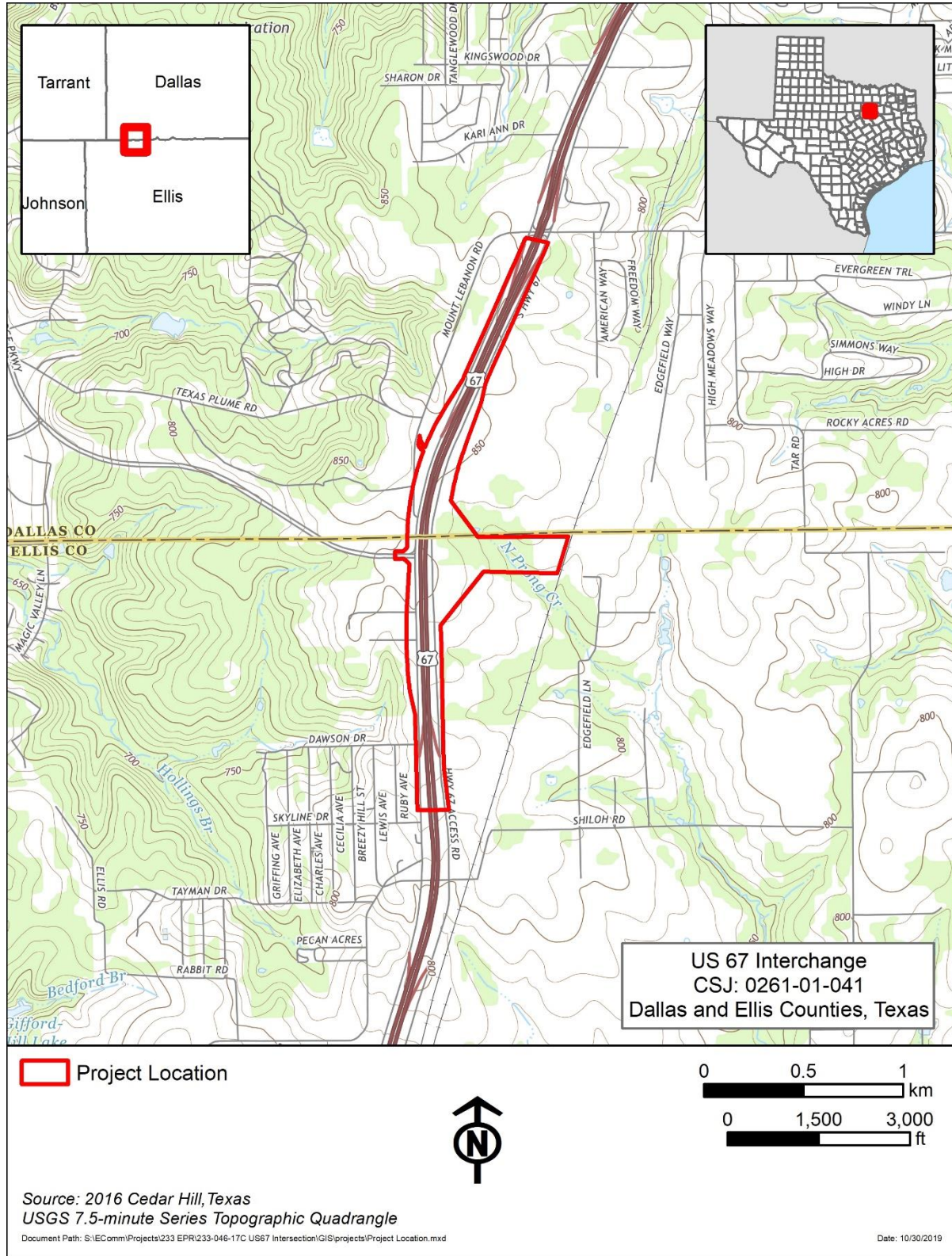


Maps
US 67 at Lake Ridge Parkway
CSJ 0261-01-041
Dallas and Ellis Counties



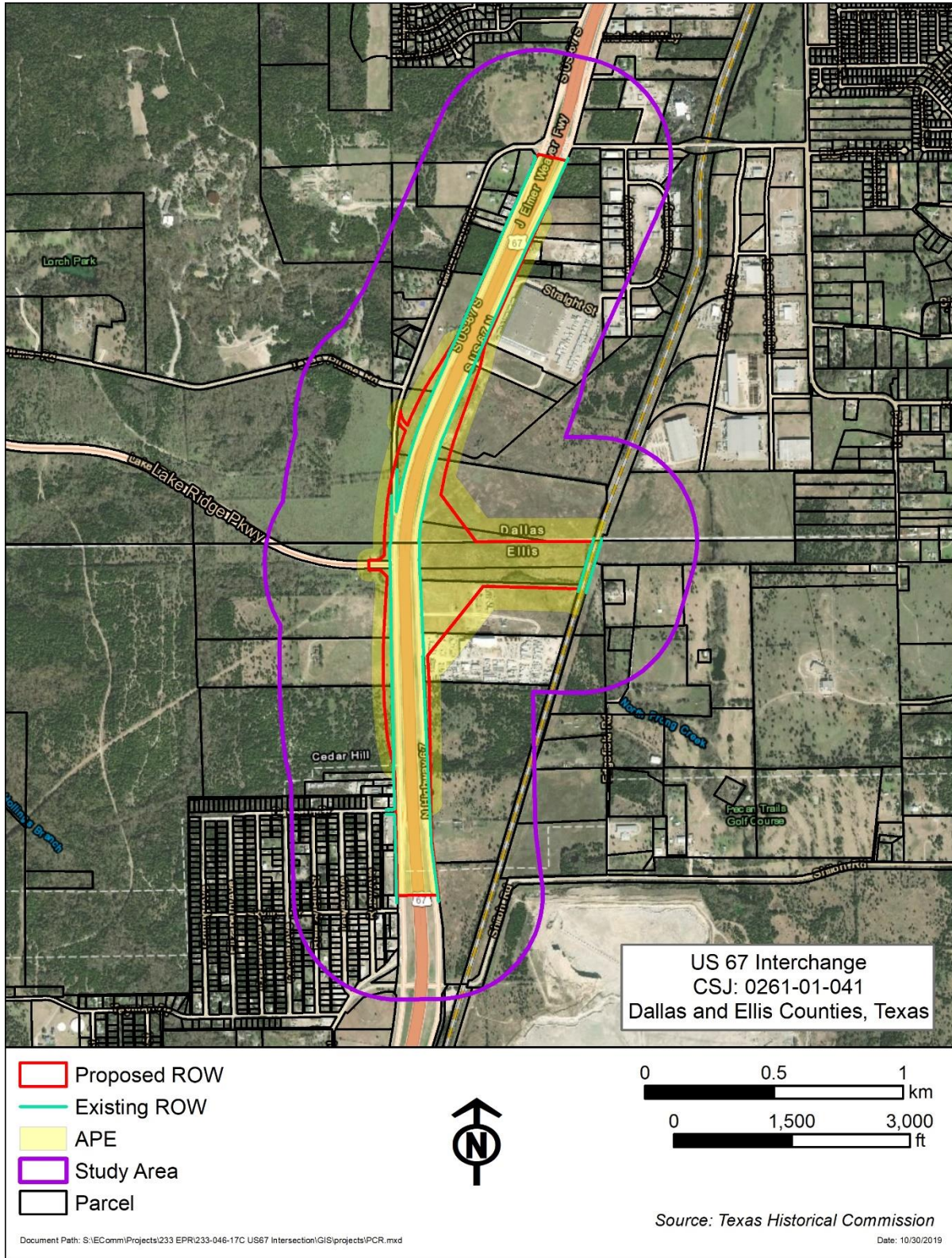
Project Location Aerial Map

Maps
US 67 at Lake Ridge Parkway
CSJ 0261-01-041
Dallas and Ellis Counties



Project Location Topographic Map

Maps
US 67 at Lake Ridge Parkway
CSJ 0261-01-041
Dallas and Ellis Counties

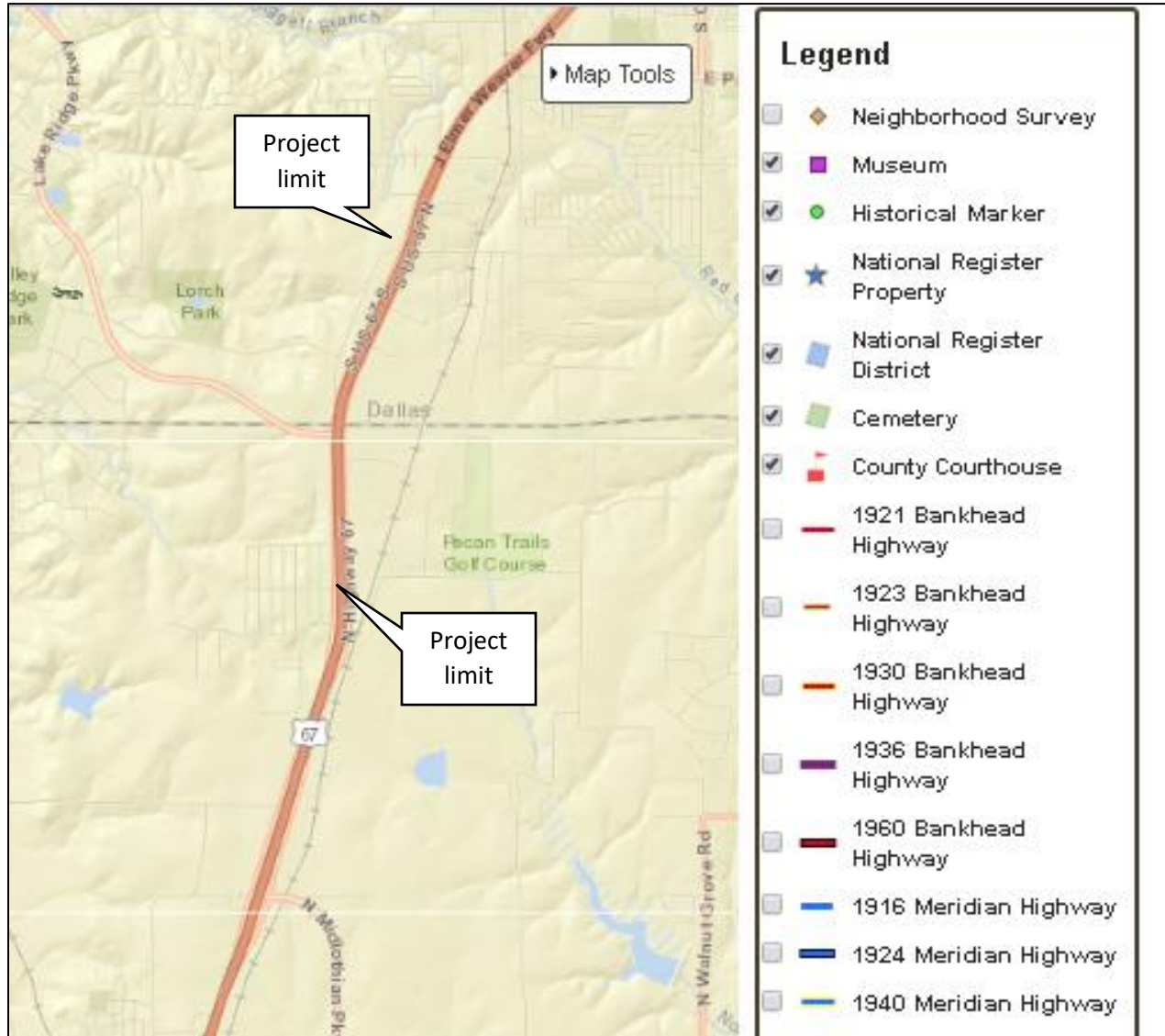


Project Study Area and APE

US 67 at Lake Ridge Parkway
CSJ 0261-01-041
Dallas and Ellis Counties

THC ATLAS

There are no NHL, NRHP, SAL, RTHL or OTHM within one-quarter mile of the project area.



Source: <https://atlas.thc.state.tx.us/Map> accessed October 30, 2019

US 67 at Lake Ridge Parkway
CSJ 0261-01-041
Dallas and Ellis Counties

TxDOT Listed and Eligible Bridges of Texas

There are no historic bridges within one-quarter mile of the project area.



Source: <https://txdot.maps.arcgis.com/apps/webappviewer/index.html?id=cc9cf3452a324d0bb961a0c8b4edd898>
accessed October 30, 2019

US 67 at Lake Ridge Parkway
CSJ 0261-01-041
Dallas and Ellis Counties

TxDOT Historic Districts and Properties of Texas

There are no listed or eligible districts/ properties within one-quarter mile of the project area.



Source:

<https://txdot.maps.arcgis.com/apps/webappviewer/index.html?id=077104987672487b9b320cc424d588a2>
accessed October 30, 2019

US 67 at Lake Ridge Parkway
CSJ: 0261-01-041
Dallas and Ellis Counties, Texas
Photos taken January 2019



Maintained ROW along NB US 67 frontage road. Camera facing northwest.



Culvert between US 67 NB frontage road and NB mainlanes. Camera facing southwest.

US 67 at Lake Ridge Parkway
CSJ: 0261-01-041
Dallas and Ellis Counties, Texas
Photos taken January 2019



East-west drainage on east side of NB frontage road. Camera facing east.



ROW showing distance between existing frontage road and fence line. Camera facing northeast

US 67 at Lake Ridge Parkway
CSJ: 0261-01-041
Dallas and Ellis Counties, Texas
Photos taken January 2019



Distribution building and water tower. Camera facing northeast.



0

ROW on west side of SB US 67 frontage road. Camera facing south.