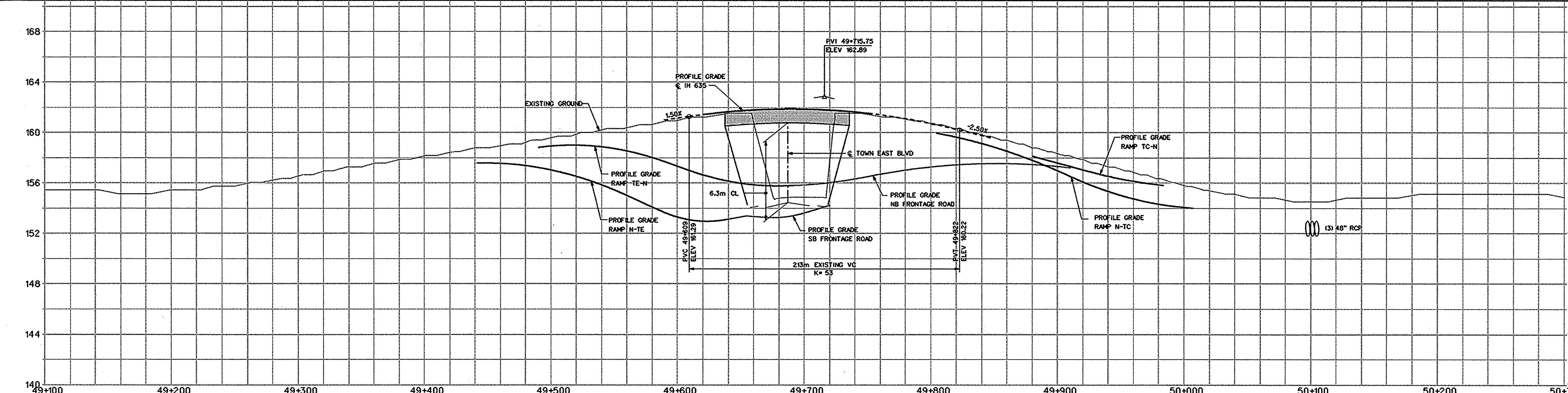
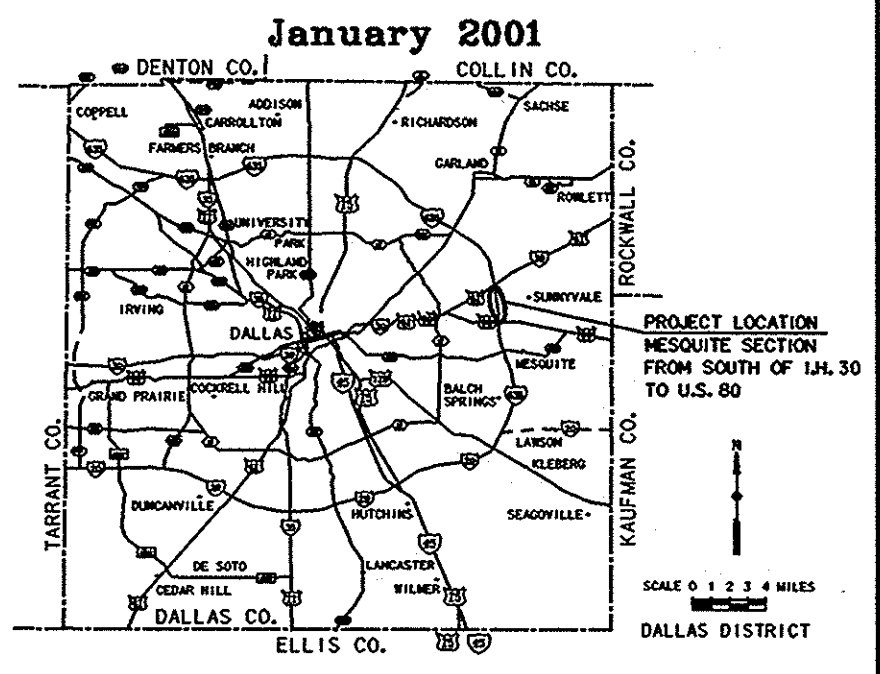


**Texas Department of Transportation**  
**Jay Nelson, P.E.**  
**Dallas District Engineer**  
**Design Schematic**  
**I.H. 635**  
**Dallas County**  
**Control: 2374-02-098**  
**Project Limits: From: South of I.H. 30**  
**To: U.S. 80**  
**Functional Classification: Interstate**  
**Design Speed: Mainlanes: 100 kph**  
**Ramps: 60 kph**  
**ADT: See Sheet 6**  
**Scale: Horizontal: 2000:1**  
**Vertical: 200:1**



- NOTES:**
- FOR PROFILES SEE SHEETS 3 AND 4.
  - FOR HORIZONTAL ALIGNMENT DATA SEE SHEET 5.
  - FOR TRAFFIC VOLUMES SEE SHEET 6.
  - MATCH EXISTING CROSS SLOPE FOR ALL WIDENED PAVEMENT SECTIONS.
  - DESIGN SPEEDS:  
 MAINLANES - 100 km/h  
 RAMP - 60 km/h  
 FRONTAGE ROADS - 60 km/h  
 CROSS STREETS - 50 km/h
  - DESIGN DETAILS SHOULD CONSIDER MAINTENANCE ITEMS (i.e., CONCRETE MOWING PADS AT BASE OF RETAINING WALLS).
  - THE SCHEMATIC DESIGN ACCOUNTS FOR ADA REQUIREMENTS. ADA RAMP LOCATIONS AND DESIGN WILL BE FINALIZED IN FINAL DESIGN.
  - FOR LARGE SIGN SCHEMATIC SEE SHEETS 7 AND 8.

**LBJ Corridor**  
 Transportation Study  
**MESQUITE SECTION - DESIGN SCHEMATIC**  
**PLAN-PROFILE**  
**BEGIN TO STA 50+300**  
**SOUTH OF I.H. 30 TO U.S. 80**

DESIGN SPEED	DISTRICT ENGINEER	SCALE	DATE
110 KPH	JAY NELSON, P.E.	AS NOTED	JULY 2001
STATE DIST. NO.	COUNTY	CONT.	SECT.
48	DALLAS	2374	02
			JOB SHEET
			098 1 OF 8

1112 6A(1)metichem\east\cadd\outsheets\pappk11.dgn 10-JUL-2001