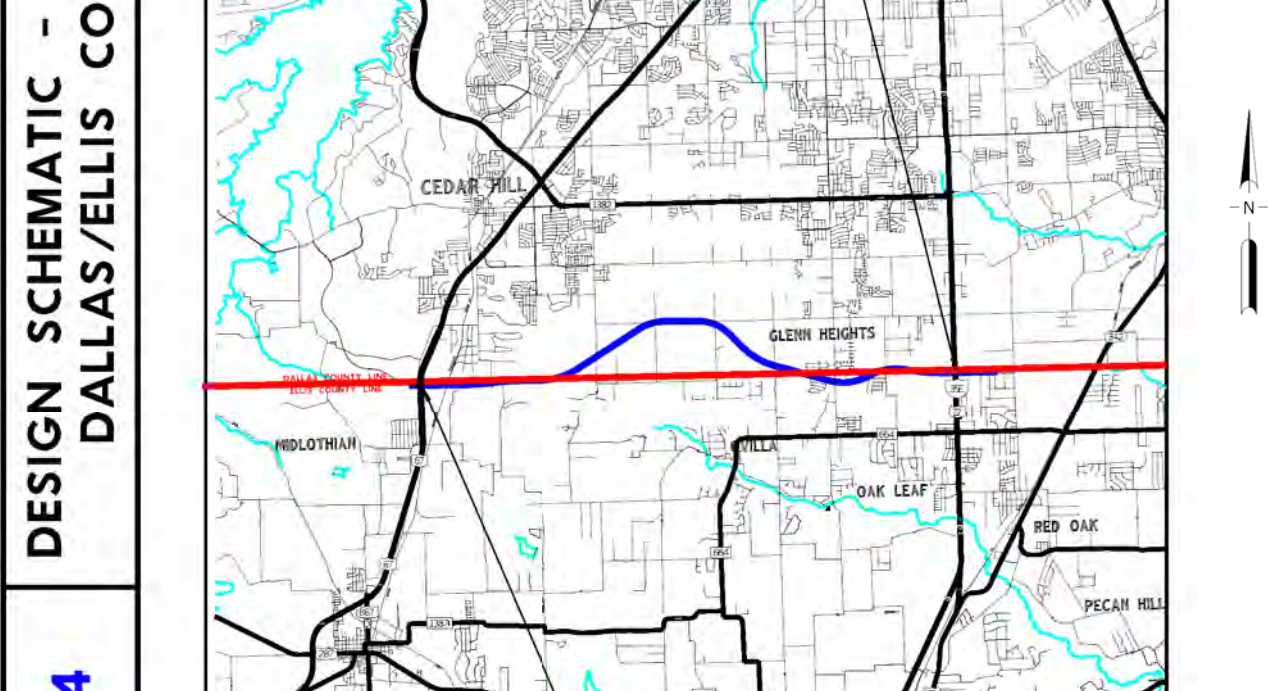


DALLAS DISTRICT
 MOHAMED K. BUR, P.E., DISTRICT ENGINEER
 DESIGN SCHEMATIC
LOOP 9
 DALLAS & ELLIS COUNTIES
 CSJ # 2964-10-006: LOOP 9 FROM US67 TO IH35E
 Project Length = 9.4 Miles

DESIGN SPEEDS
 DESIGN SPEEDS AND FUNCTIONAL CLASSIFICATIONS:
 MAINLANES (RURAL FREEWAY) 70 MPH
 RAMP AND TRANSITION (RURAL FREEWAY) 60 MPH
 DIRECT CONNECTOR (RURAL FREEWAY) 45 MPH
 FRONTAGE ROAD (URBAN COLLECTOR) 55 MPH
 CROSS STREETS 40 MPH
 U-TURNS (URBAN COLLECTOR) 25 MPH

ALTERNATIVE 2

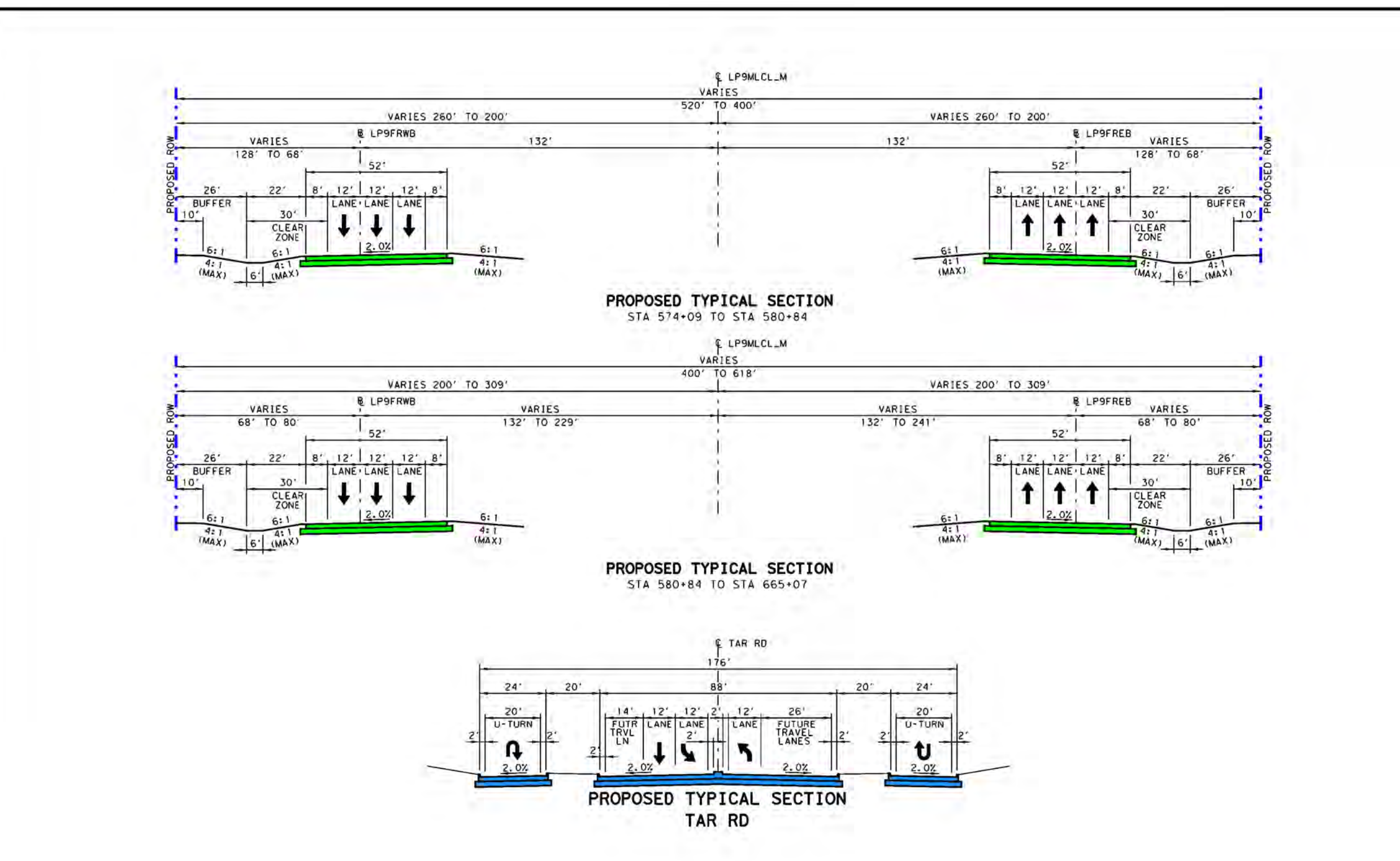


60% DRAFT
 PRELIMINARY, SUBJECT TO CHANGE WITHOUT NOTICE
 SCHEMATIC PREPARED BY:
 BGE, INC.
 REGISTRATION NUMBER F-1046
 FOR INTERIM REVIEW ONLY, NOT FOR PERMITTING, BIDDING OR CONSTRUCTION.
 Prepared by or under the direct supervision of:
 COLTON A. GILL, P.E. 138563
 DATE 2/3/2022 P.E. NUMBER

PRELIMINARY
 SUBJECT TO CHANGE BASED ON FURTHER DEVELOPMENTS RESULTING FROM PUBLIC INPUT AND TECHNICAL REVIEW

HORIZONTAL SCALE
 0 100 200 300
 VERTICAL SCALE
 0 5 10 20 30

ROLL 1 OF 4



GENERAL NOTES:

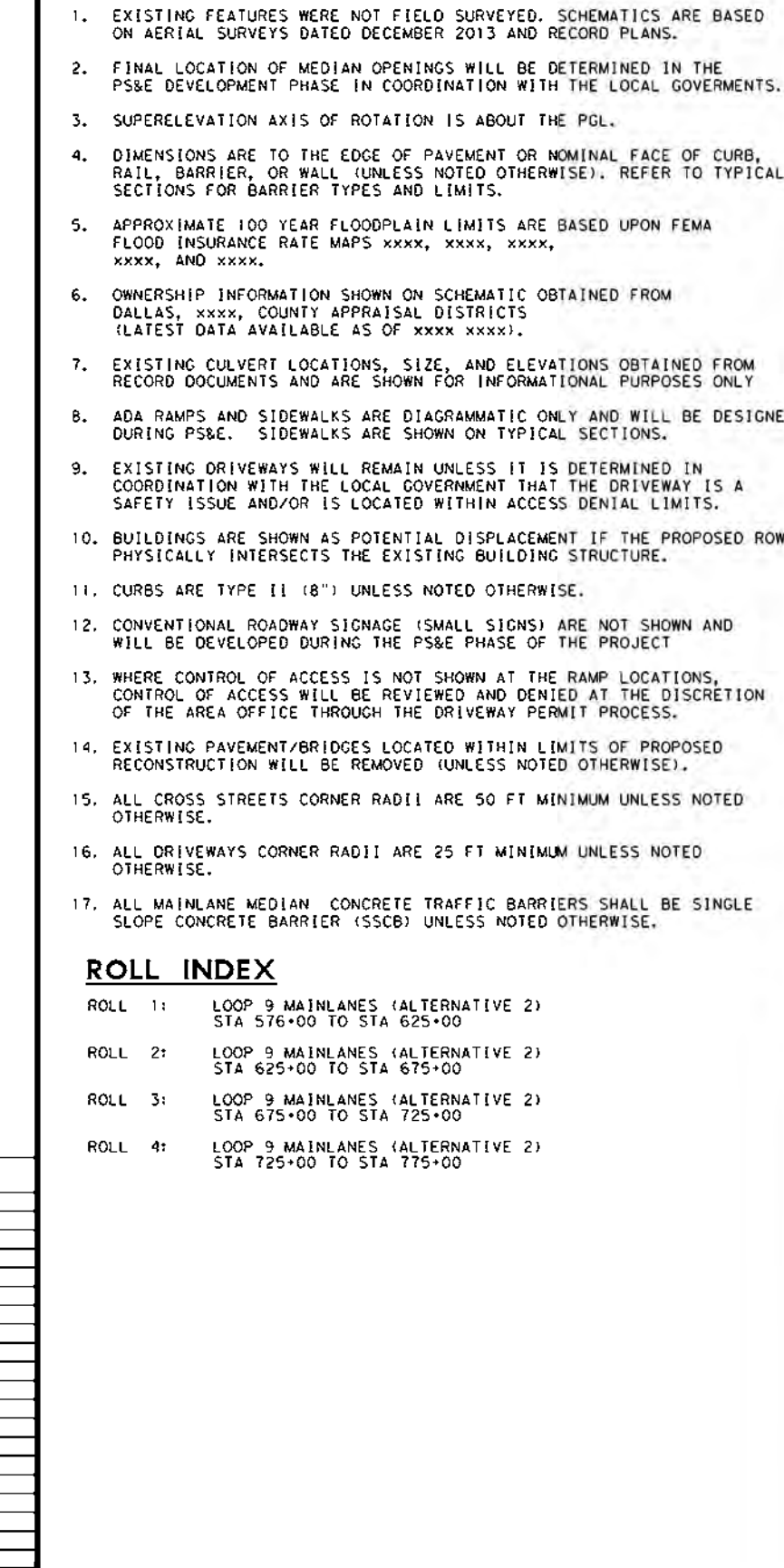
- EXISTING FEATURES WERE NOT FIELD SURVEYED. SCHEMATICS ARE BASED ON AERIAL SURVEYS DATED DECEMBER 2013 AND RECORD PLANS.
- FINAL LOCATION OF MEDIAN OPENINGS WILL BE DETERMINED IN THE PS&E DEVELOPMENT PHASE IN COORDINATION WITH THE LOCAL GOVERNMENTS.
- SUPERELEVATION AXIS OF ROTATION IS ABOUT THE POL.
- DIMENSIONS ARE TO THE EDGE OF PAVEMENT OR MINIMAL FACE OF CURB, RAIL, BARRIER, OR WALL UNLESS NOTED OTHERWISE. REFER TO TYPICAL SECTIONS FOR BARRIER TYPES AND LIMITS.
- APPROXIMATE 100 YEAR FLOODPLAIN LIMITS ARE BASED UPON FEMA FLOOD INSURANCE RATE MAPS XXXX, XXXX, XXXX.
- OWNERSHIP INFORMATION SHOWN ON SCHEMATIC OBTAINED FROM DALLAS COUNTY APPRAISAL DISTRICTS. LATEST DATA AVAILABLE AS OF XXXX, XXXX.
- EXISTING CULVERT LOCATIONS, SIZE, AND ELEVATIONS OBTAINED FROM RECORD DOCUMENTS AND ARE SHOWN FOR INFORMATION PURPOSES ONLY DURING PS&E. SIDEWALKS ARE NOT TO BE DESIGNED.
- EXISTING DRIVEWAYS WILL REMAIN UNLESS IT IS DETERMINED IN COORDINATION WITH THE LOCAL GOVERNMENT THAT THE DRIVEWAY IS A SAFETY ISSUE AND/OR IS LOCATED WITHIN ACCESS DENIAL LIMITS.
- ADA RAMP AND SIDEWALKS ARE DIAGNOSTIC ONLY AND WILL BE DESIGNED DURING PS&E. SIDEWALKS ARE NOT TO BE DESIGNED.
- BUILDINGS ARE SHOWN AS POTENTIAL DISPLACEMENT IF THE PROPOSED ROW PHYSICALLY INTERSECTS THE EXISTING BUILDING STRUCTURE.
- CURBS ARE TYPE II (8") UNLESS NOTED OTHERWISE.
- CONVENTIONAL ROADWAY SIGNAGE (SMALL SIGNS) ARE NOT SHOWN AND WILL BE DEVELOPED DURING THE PS&E PHASE OF THE PROJECT.
- WHERE CONTROL OF ACCESS IS NOT SHOWN AT THE RAMP LOCATIONS, CONTROL OF ACCESS WILL BE REVIEWED AND CANCELED AT THE DISCRETION OF THE AREA OFFICE THROUGH THE DRIVEWAY PERMIT PROCESS.
- EXISTING PAVEMENT/PERIODS LOCATED WITHIN LIMITS OF PROPOSED RECONSTRUCTION WILL BE REMOVED UNLESS NOTED OTHERWISE.
- ALL CROSS STREETS CORNER RADII ARE 50 FT MINIMUM UNLESS NOTED OTHERWISE.
- ALL DRIVEWAYS CORNER RADII ARE 25 FT MINIMUM UNLESS NOTED OTHERWISE.
- ALL MAINLINE MEDIAN CONCRETE TRAFFIC BARRIERS SHALL BE SINGLE SLOPE CONCRETE BARRIER (SSCB) UNLESS NOTED OTHERWISE.

ROLL INDEX

ROLL NO.	DESCRIPTION
1	LOOP 9 MAINLANES (ALTERNATIVE 2) STA 514+09 TO STA 625+00
2	LOOP 9 MAINLANES (ALTERNATIVE 2) STA 625+00 TO STA 675+00
3	LOOP 9 MAINLANES (ALTERNATIVE 2) STA 675+00 TO STA 735+00
4	LOOP 9 MAINLANES (ALTERNATIVE 2) STA 735+00 TO STA 795+00

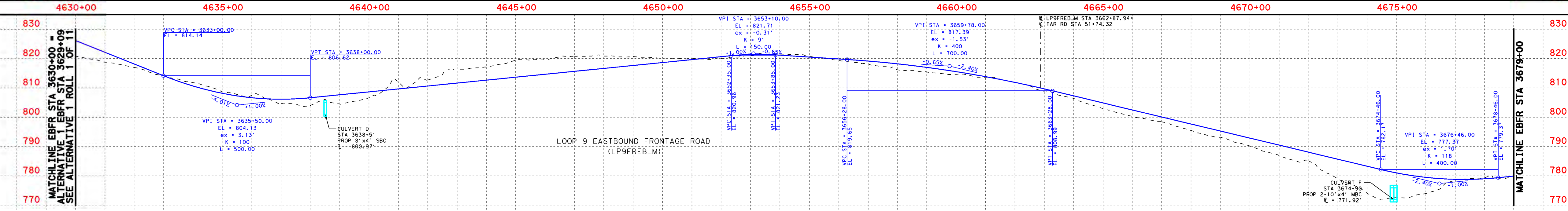
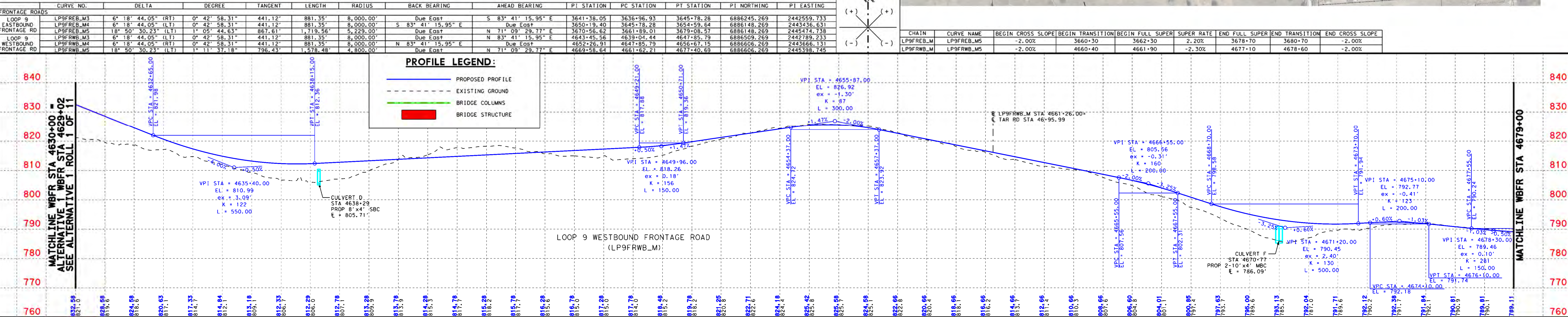
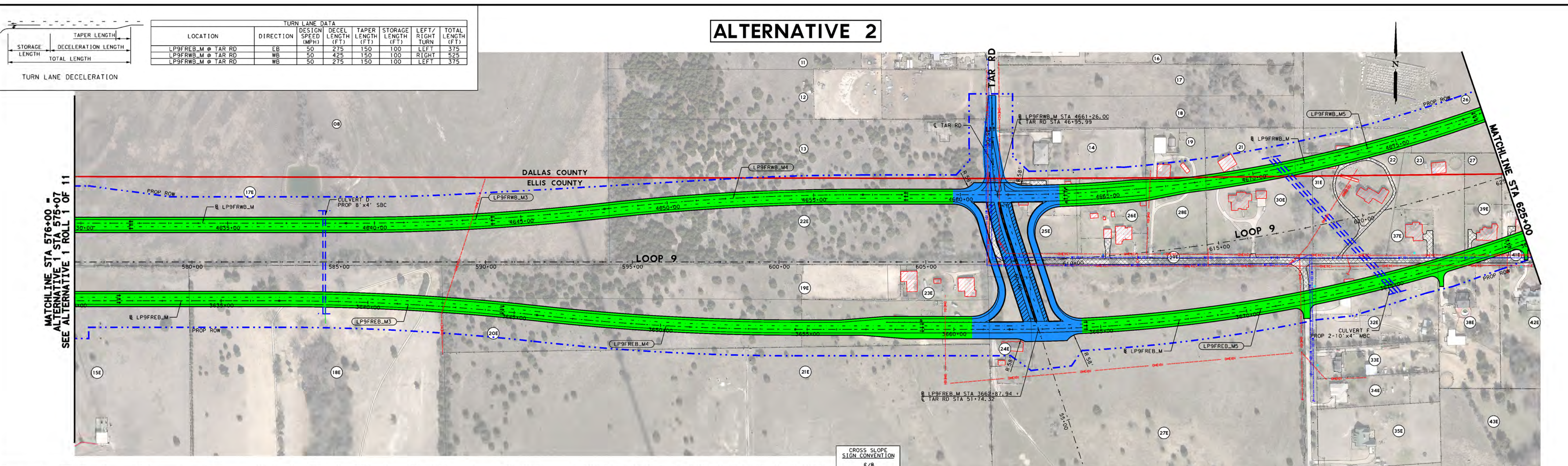
TURN LANE DATA

LOCATION	DIRECTION	DESIGN SPEED (MPH)	DECEL LENGTH (FT)	TAPER LENGTH (FT)	STORAGE LENGTH (FT)	LEFT TURN LENGTH (FT)	TOTAL LENGTH (FT)
LPSFRFB.M @ TAR RD	EB	50	275	150	100	LEFT	575
LPSFRFB.M @ TAR RD	WB	50	275	150	100	RIGHT	575
LPSFRFB.M @ TAR RD	WB	50	275	150	100	LEFT	575



PARCEL

PARCEL ID	OWNER
10	OWNED
11	USDEV HIGH POINT 67 II INC
12	KASPER WILLIAM C & MIDONNA C
13	KASPER WILLIAM C
14	MEDINA SERVANDO LF ES JULIA T MOLINA LIFE EST
15	WALKER MARK E STACY SARA WALKER
16	SMITH DEBORAH S
17	SMITH DEBORAH S
18	SMITH DEBORAH S
19	SMITH DEBORAH S
20	SMITH DEBORAH S
21	SMITH DEBORAH S
22	SMITH DEBORAH S
23	SMITH DEBORAH S
24	SMITH DEBORAH S
25	SMITH DEBORAH S
26	SMITH DEBORAH S
27	SMITH DEBORAH S
28	SMITH DEBORAH S
29	SMITH DEBORAH S
30	SMITH DEBORAH S
31	SMITH DEBORAH S
32	SMITH DEBORAH S
33	SMITH DEBORAH S
34	SMITH DEBORAH S
35	SMITH DEBORAH S
36	SMITH DEBORAH S
37	SMITH DEBORAH S
38	SMITH DEBORAH S
39	SMITH DEBORAH S
40	SMITH DEBORAH S
41	SMITH DEBORAH S
42	SMITH DEBORAH S
43	SMITH DEBORAH S
44	SMITH DEBORAH S
45	SMITH DEBORAH S
46	SMITH DEBORAH S
47	SMITH DEBORAH S
48	SMITH DEBORAH S
49	SMITH DEBORAH S
50	SMITH DEBORAH S



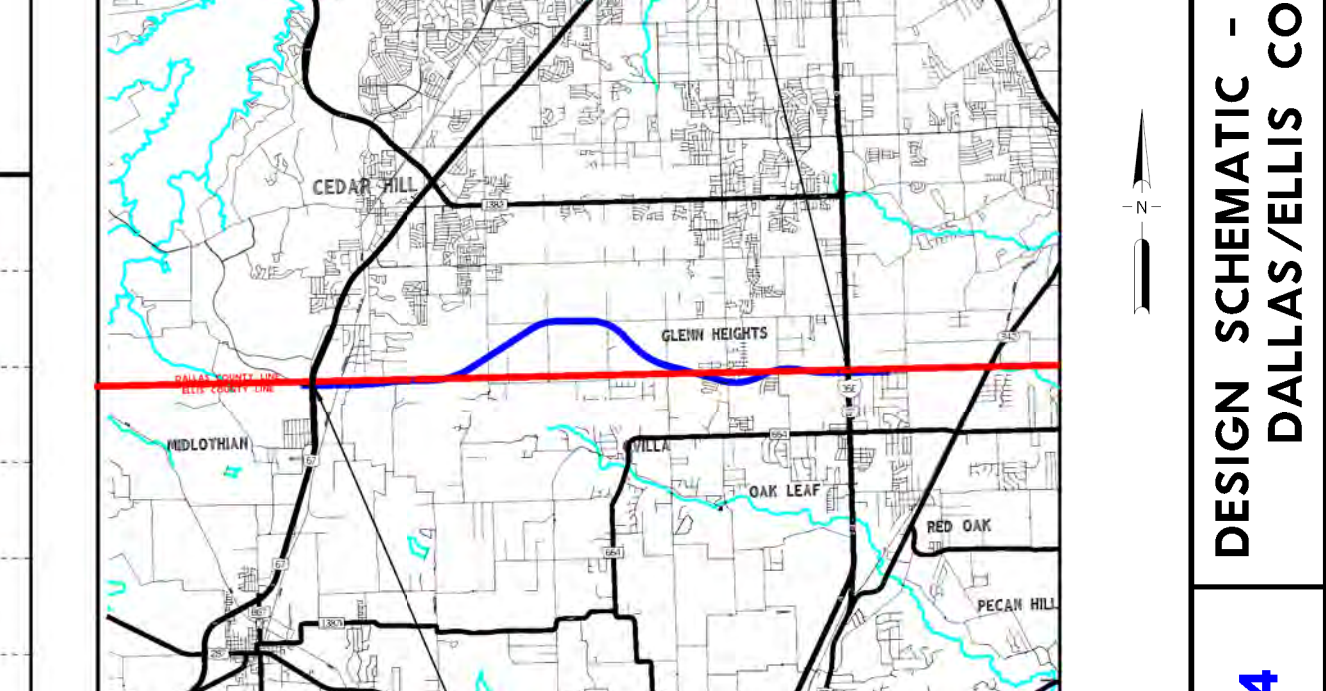
GENERAL NOTES:

- EXISTING FEATURES WERE NOT FIELD SURVEYED. SCHEMATICS ARE BASED ON AERIAL SURVEYS DATED DECEMBER 2013 AND RECORD PLANS.
- FINAL LOCATION OF MEDIAN OPENINGS WILL BE DETERMINED IN THE PS&E DEVELOPMENT PHASE IN COORDINATION WITH THE LOCAL GOVERNMENTS.
- SUPERELEVATION AXIS OF ROTATION IS ABOUT THE POL.
- DIMENSIONS ARE TO THE EDGE OF PAVEMENT OR MINIMAL FACE OF CURB, RAIL, BARRIER, OR WALL UNLESS NOTED OTHERWISE. REFER TO TYPICAL SECTIONS FOR BARRIER TYPES AND LIMITS.
- APPROXIMATE 100 YEAR FLOODPLAIN LIMITS ARE BASED UPON FEMA FLOOD INSURANCE RATE MAPS XXXX, XXXX, XXXX.
- OWNERSHIP INFORMATION SHOWN ON SCHEMATIC OBTAINED FROM DALLAS COUNTY APPRAISAL DISTRICTS. LATEST DATA AVAILABLE AS OF XXXX, XXXX.
- EXISTING CULVERT LOCATIONS, SIZE, AND ELEVATIONS OBTAINED FROM RECORD DOCUMENTS AND ARE SHOWN FOR INFORMATION PURPOSES ONLY DURING PS&E. SIDEWALKS ARE NOT TO BE DESIGNED.
- EXISTING DRIVEWAYS WILL REMAIN UNLESS IT IS DETERMINED IN COORDINATION WITH THE LOCAL GOVERNMENT THAT THE DRIVEWAY IS A SAFETY ISSUE AND/OR IS LOCATED WITHIN ACCESS DENIAL LIMITS.
- ADA RAMP AND SIDEWALKS ARE DIAGNOSTIC ONLY AND WILL BE DESIGNED DURING PS&E. SIDEWALKS ARE NOT TO BE DESIGNED.
- BUILDINGS ARE SHOWN AS POTENTIAL DISPLACEMENT IF THE PROPOSED ROW PHYSICALLY INTERSECTS THE EXISTING BUILDING STRUCTURE.
- CURBS ARE TYPE II (8") UNLESS NOTED OTHERWISE.
- CONVENTIONAL ROADWAY SIGNAGE (SMALL SIGNS) ARE NOT SHOWN AND WILL BE DEVELOPED DURING THE PS&E PHASE OF THE PROJECT.
- WHERE CONTROL OF ACCESS IS NOT SHOWN AT THE RAMP LOCATIONS, CONTROL OF ACCESS WILL BE REVIEWED AND CANCELED AT THE DISCRETION OF THE AREA OFFICE THROUGH THE DRIVEWAY PERMIT PROCESS.
- EXISTING PAVEMENT/PERIODS LOCATED WITHIN LIMITS OF PROPOSED RECONSTRUCTION WILL BE REMOVED UNLESS NOTED OTHERWISE.
- ALL CROSS STREETS CORNER RADII ARE 50 FT MINIMUM UNLESS NOTED OTHERWISE.
- ALL DRIVEWAYS CORNER RADII ARE 25 FT MINIMUM UNLESS NOTED OTHERWISE.
- ALL MAINLINE MEDIAN CONCRETE TRAFFIC BARRIERS SHALL BE SINGLE SLOPE CONCRETE BARRIER (SSCB) UNLESS NOTED OTHERWISE.

DALLAS DISTRICT
 MOHAMED K. BUR, P.E., DISTRICT ENGINEER
 DESIGN SCHEMATIC
LOOP 9
 DALLAS & ELLIS COUNTIES
 CSJ # 2964-10-006: LOOP 9 FROM US67 TO IH35E
 Project Length = 9.4 Miles

DESIGN SPEEDS
 DESIGN SPEEDS AND FUNCTIONAL CLASSIFICATIONS:
 MAINLANES (RURAL FREEWAY) 70 MPH
 RAMP AND TRANSITION (RURAL FREEWAY) 60 MPH
 DIRECT CONNECTOR (RURAL FREEWAY) 45 MPH
 FRONTAGE ROAD (URBAN COLLECTOR) 55 MPH
 CROSS STREETS 40 MPH
 U-TURNS (URBAN COLLECTOR) 25 MPH

ALTERNATIVE 2

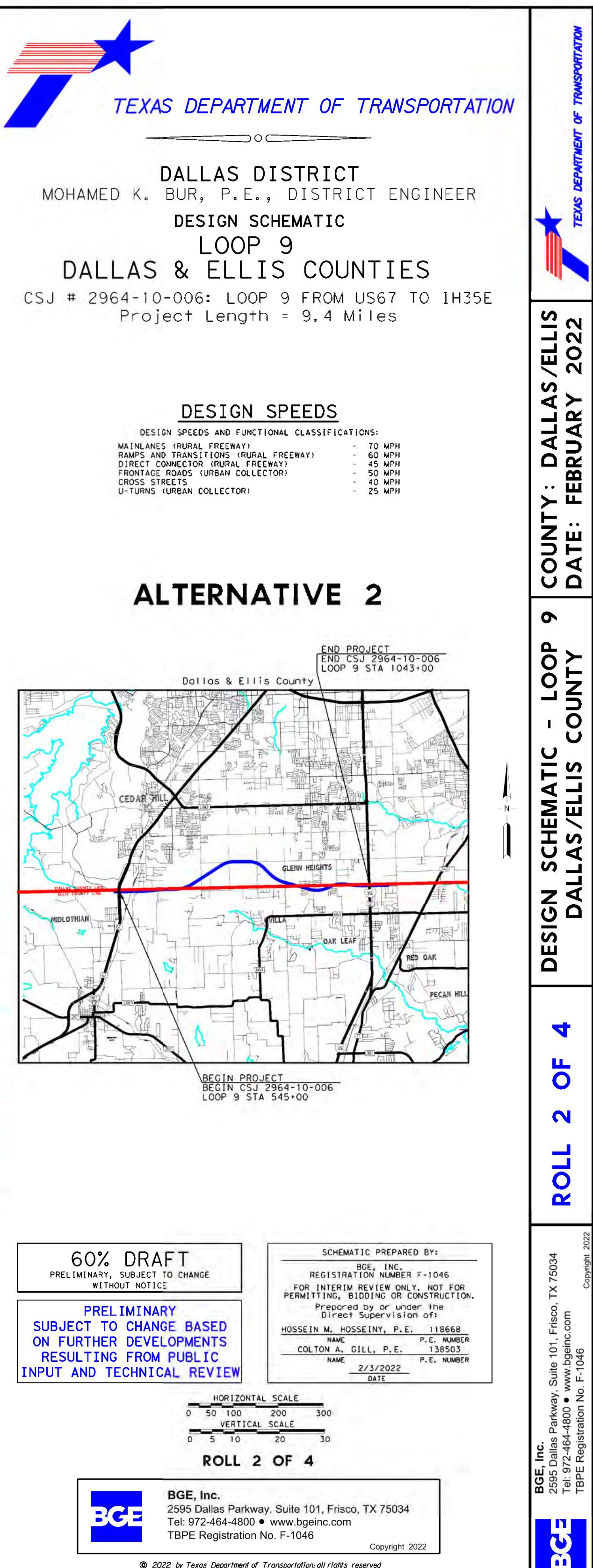
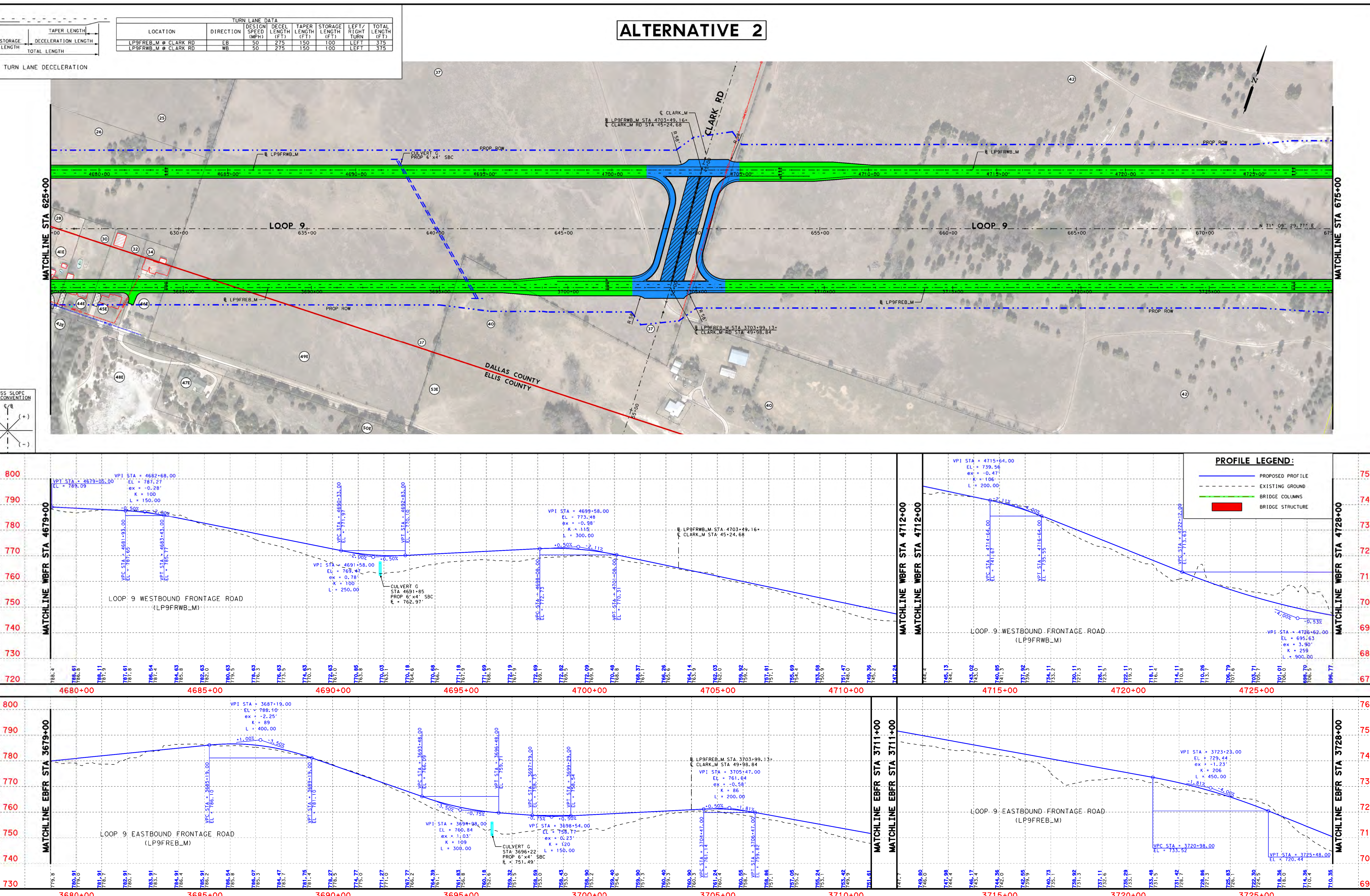
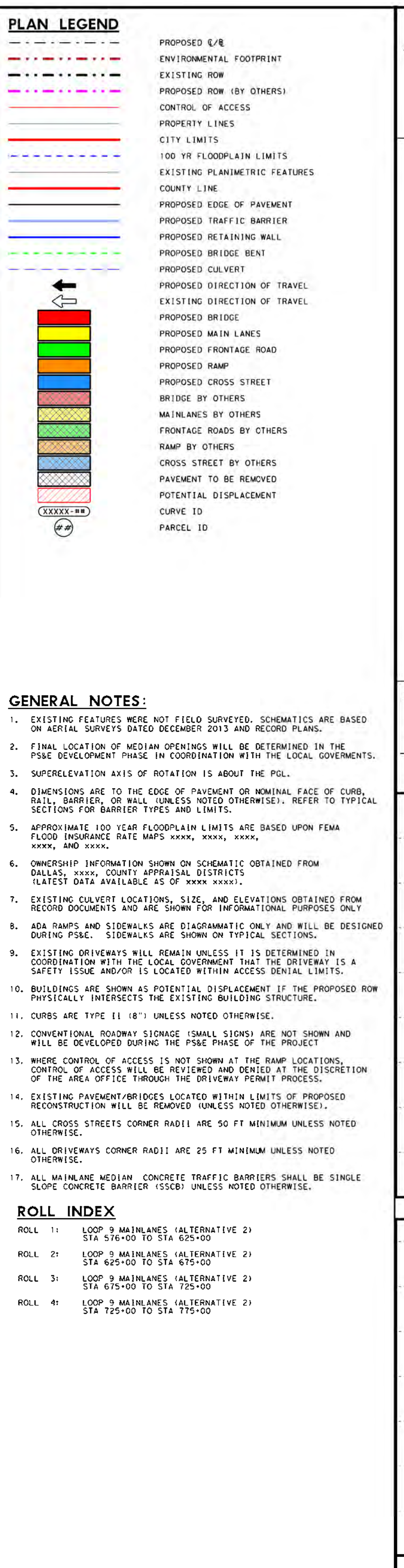
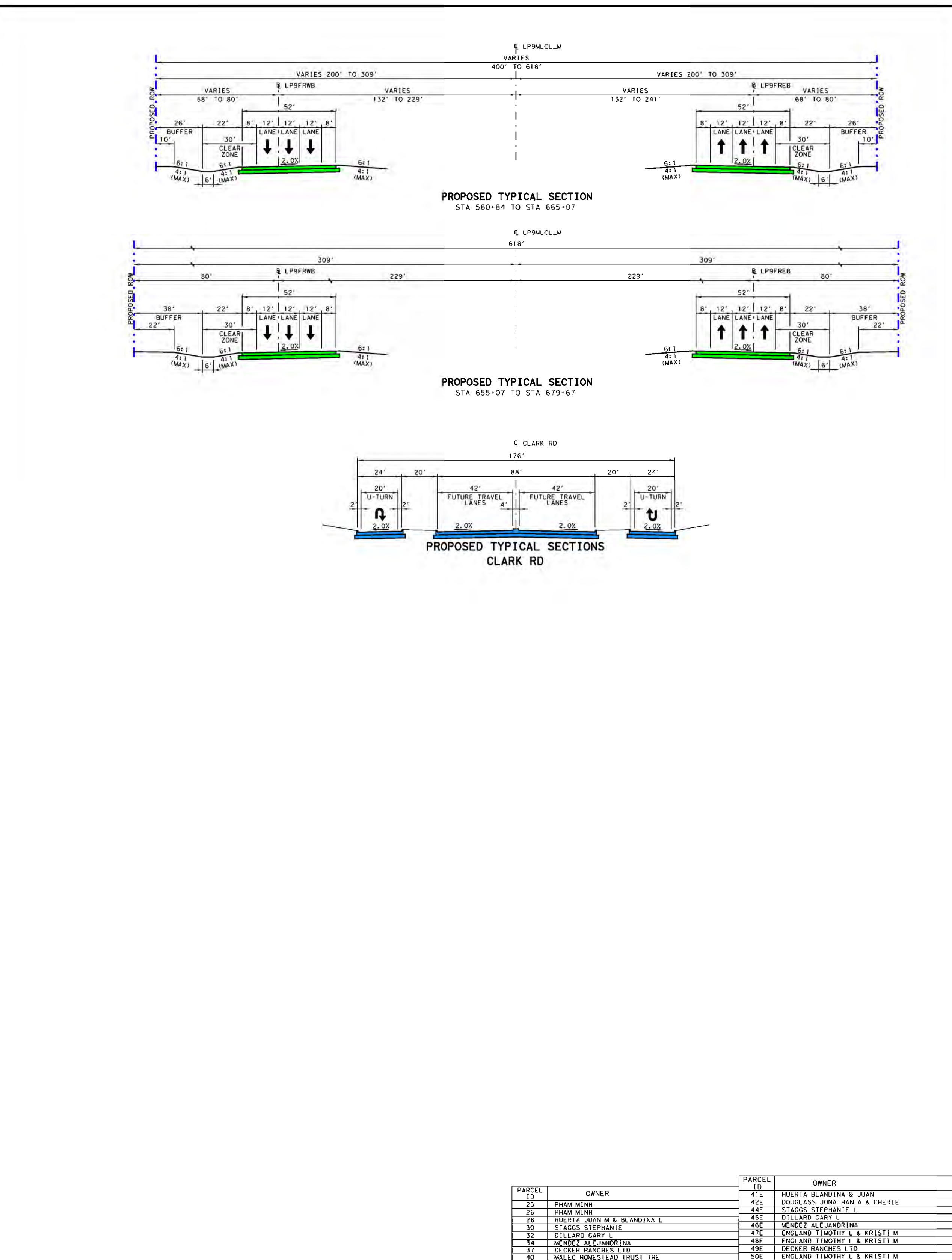


60% DRAFT
 PRELIMINARY, SUBJECT TO CHANGE WITHOUT NOTICE
 SCHEMATIC PREPARED BY:
 BGE, INC.
 REGISTRATION NUMBER F-1046
 FOR INTERIM REVIEW ONLY, NOT FOR PERMITTING, BIDDING OR CONSTRUCTION.
 Prepared by or under the direct supervision of:
 COLTON A. GILL, P.E. 138563
 DATE 2/3/2022 P.E. NUMBER

PRELIMINARY
 SUBJECT TO CHANGE BASED ON FURTHER DEVELOPMENTS RESULTING FROM PUBLIC INPUT AND TECHNICAL REVIEW

HORIZONTAL SCALE
 0 100 200 300
 VERTICAL SCALE
 0 5 10 20 30

ROLL 1 OF 4



COUNTY: DALLAS/ELLIS COUNTY
 DATE: FEBRUARY 2022
 DESIGN SCHEMATIC - LOOP 9
 DALLAS/ELLIS COUNTY
 ROLL 2 OF 4

COUNTY: DALLAS/ELLIS COUNTY
 DATE: FEBRUARY 2022
 DESIGN SCHEMATIC - LOOP 9
 DALLAS/ELLIS COUNTY
 ROLL 2 OF 4

DESIGN SPEEDS
DESIGN SPEEDS AND FUNCTIONAL CLASSIFICATIONS:
MAINLANES (URBAN FREEWAY) - 70 MPH
RAMP AND TRANSITION (URBAN FREEWAY) - 60 MPH
DIRECT CONNECTOR (URBAN FREEWAY) - 45 MPH
FRONTAGE ROADS (URBAN COLLECTOR) - 35 MPH
CROSS STREETS - 40 MPH
U-TURNS (URBAN COLLECTOR) - 25 MPH

ALTERNATIVE 2

DESIGN SPEEDS
DESIGN SPEEDS AND FUNCTIONAL CLASSIFICATIONS:
MAINLANES (URBAN FREEWAY) - 70 MPH
RAMP AND TRANSITION (URBAN FREEWAY) - 60 MPH
DIRECT CONNECTOR (URBAN FREEWAY) - 45 MPH
FRONTAGE ROADS (URBAN COLLECTOR) - 35 MPH
CROSS STREETS - 40 MPH
U-TURNS (URBAN COLLECTOR) - 25 MPH

ALTERNATIVE 2

60% DRAFT
PRELIMINARY, SUBJECT TO CHANGE WITHOUT NOTICE

PRELIMINARY
SUBJECT TO CHANGE BASED ON FURTHER DEVELOPMENTS RESULTING FROM PUBLIC INPUT AND TECHNICAL REVIEW

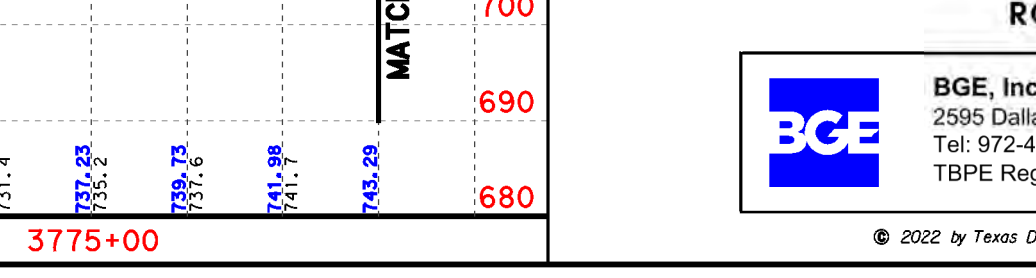
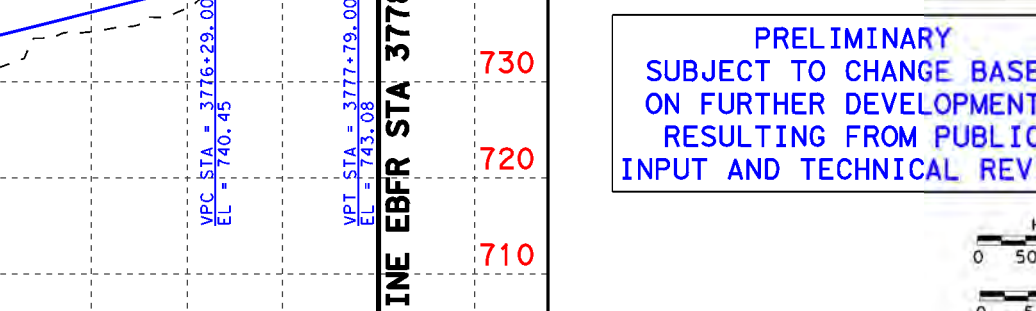
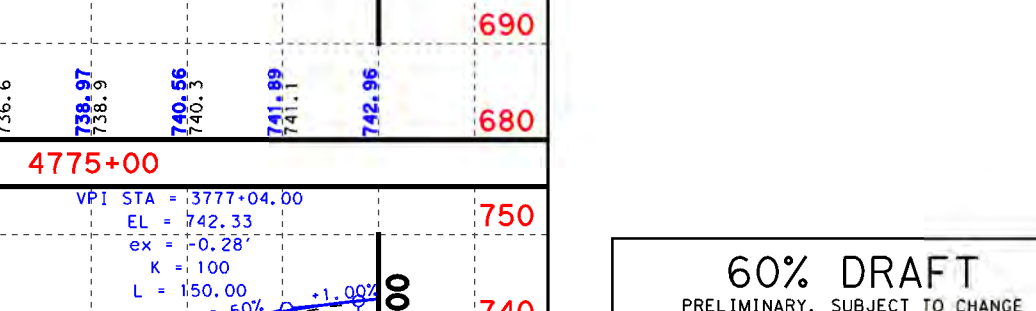
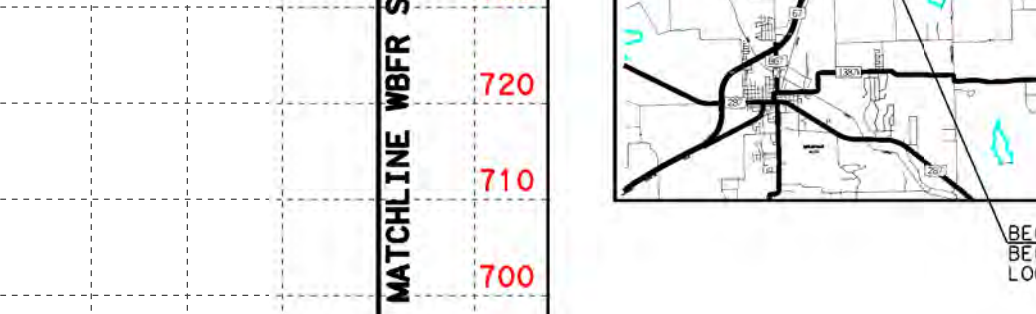
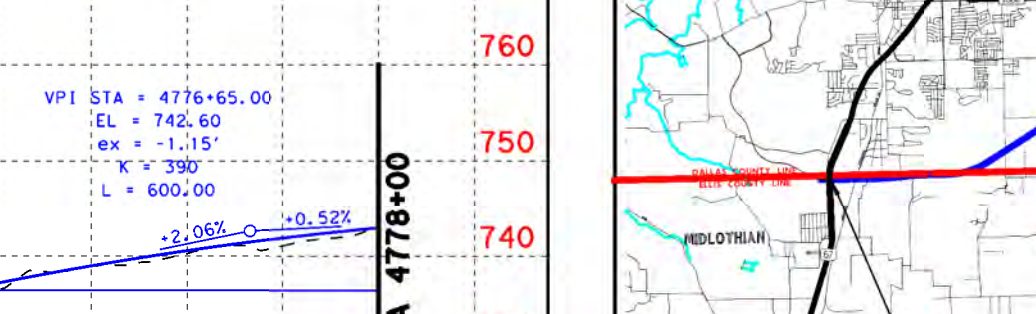
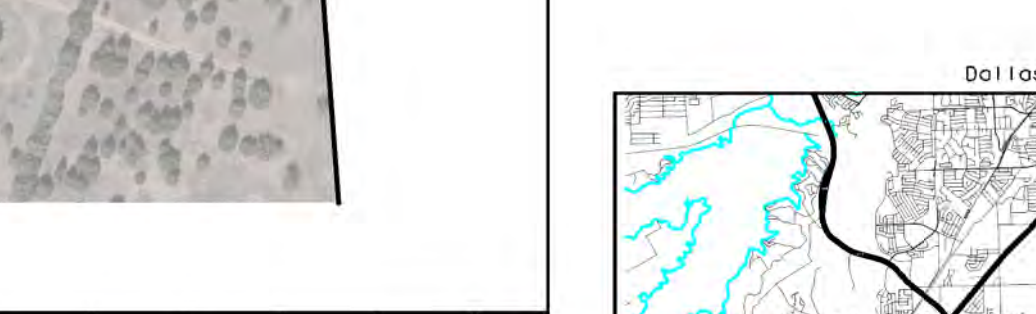
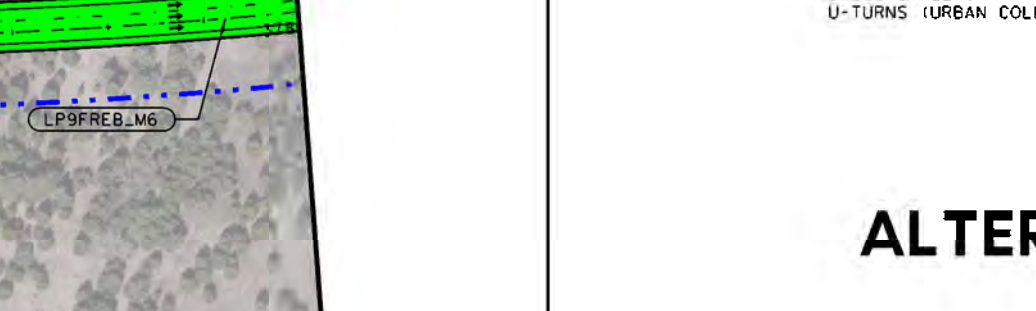
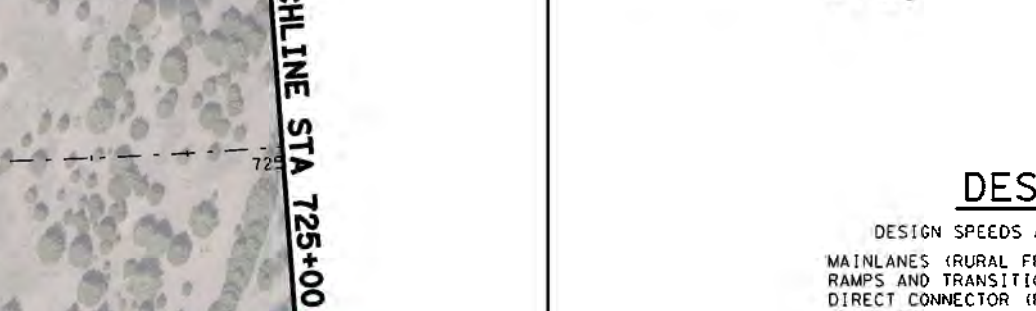
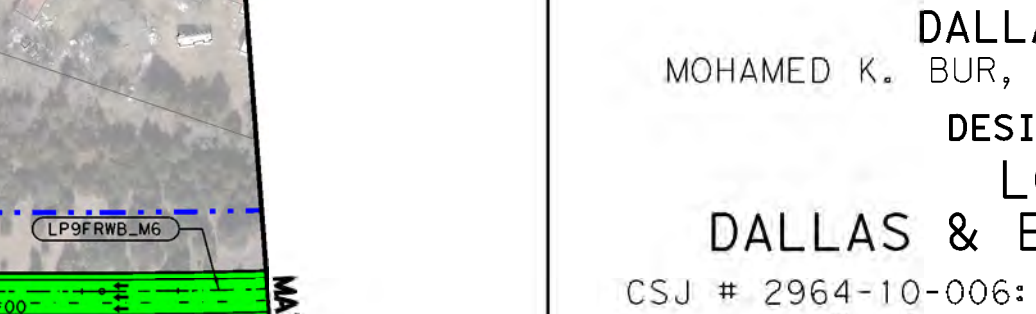
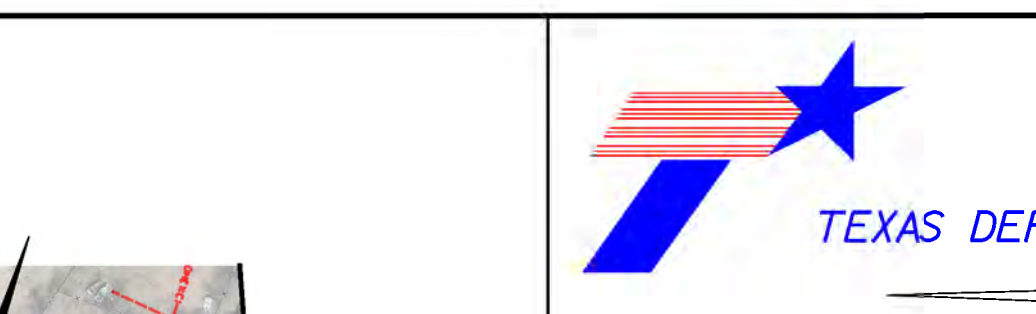
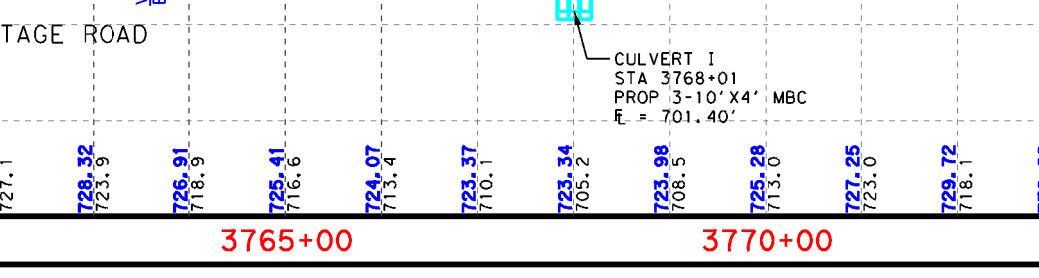
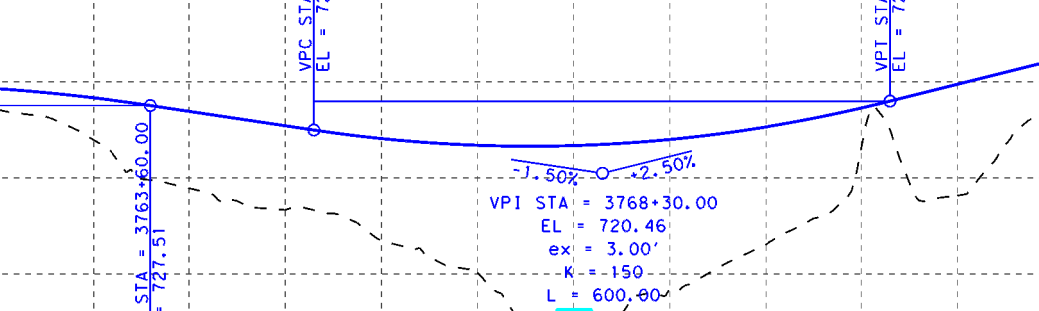
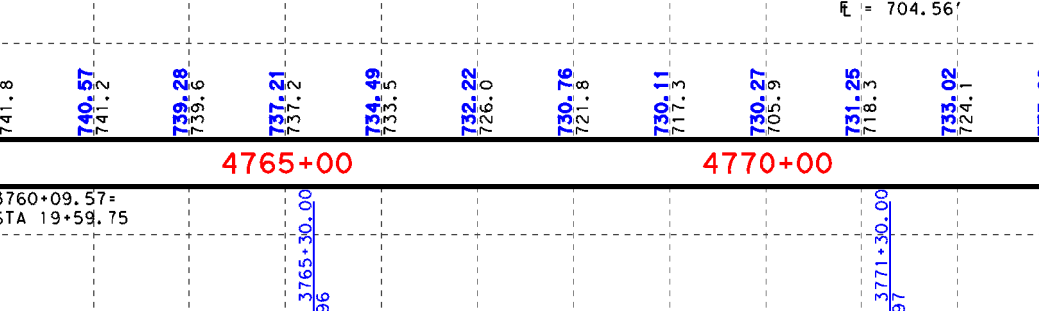
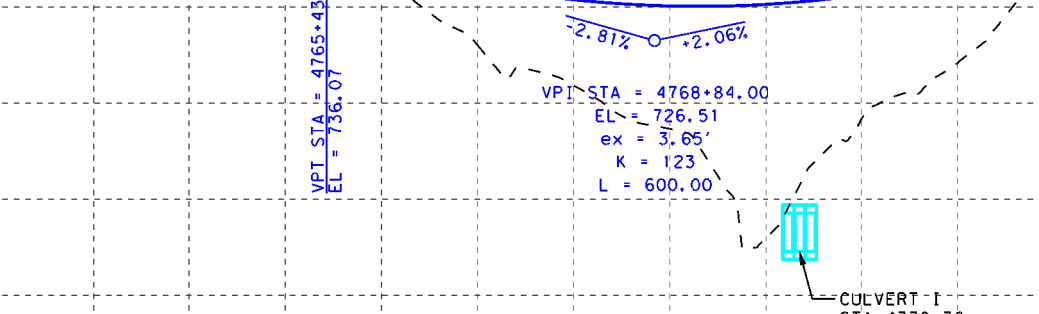
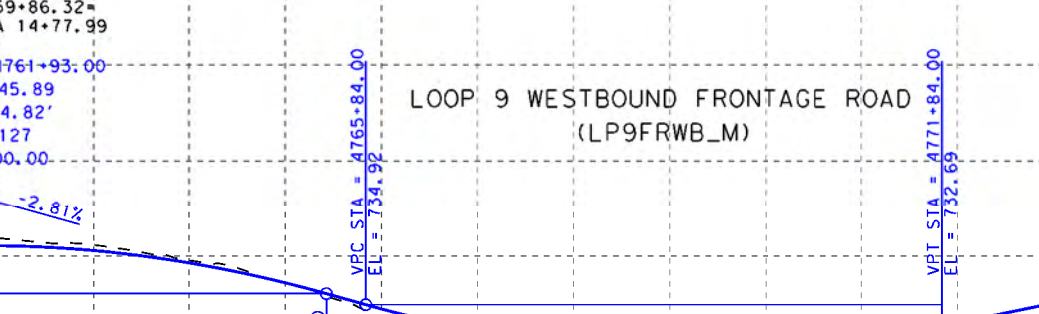
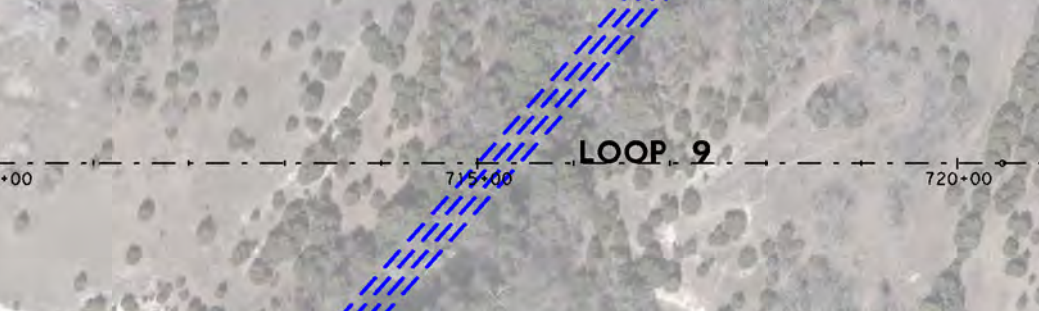
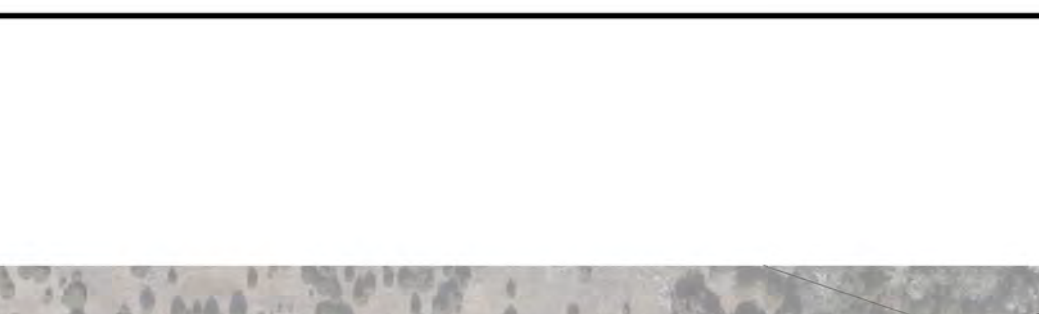
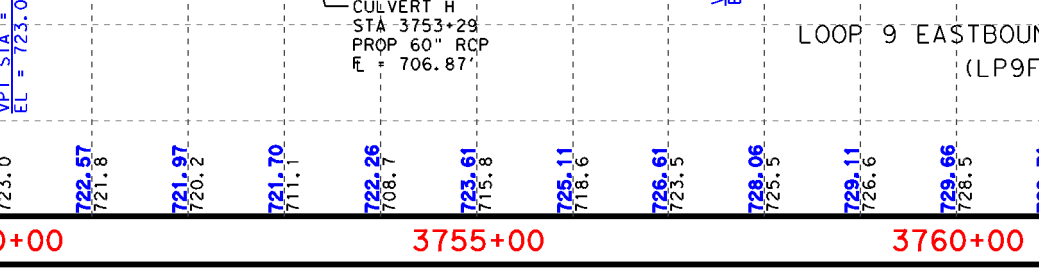
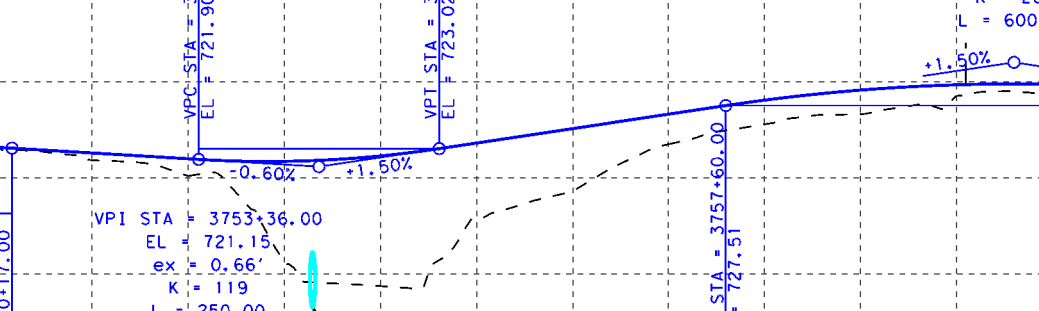
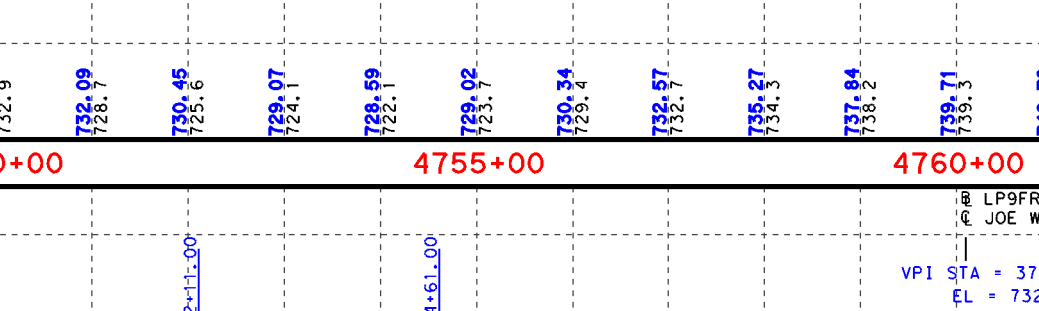
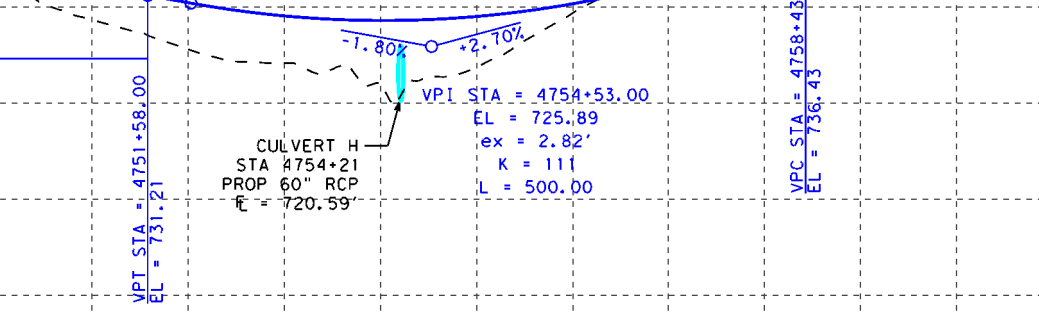
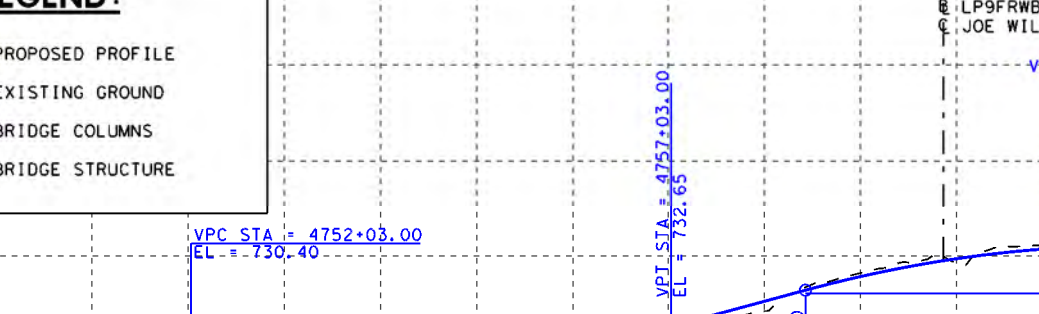
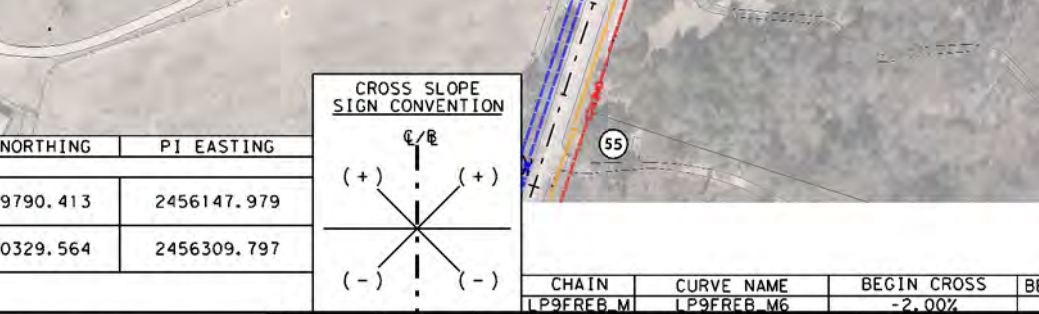
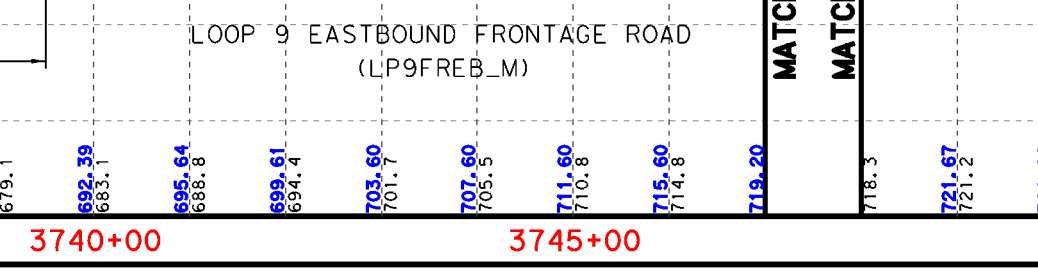
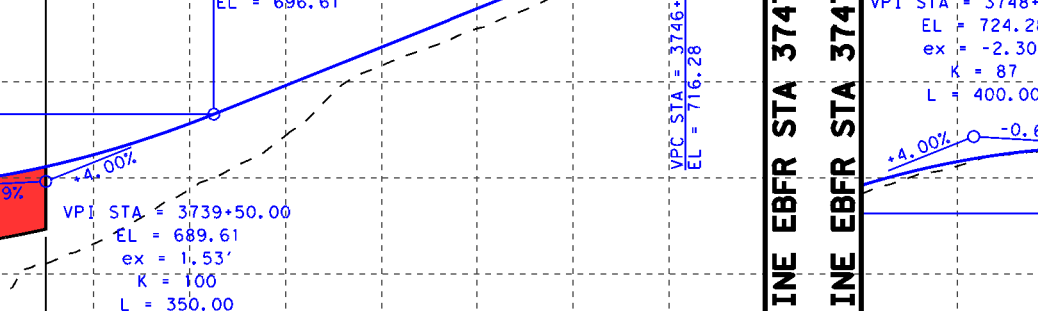
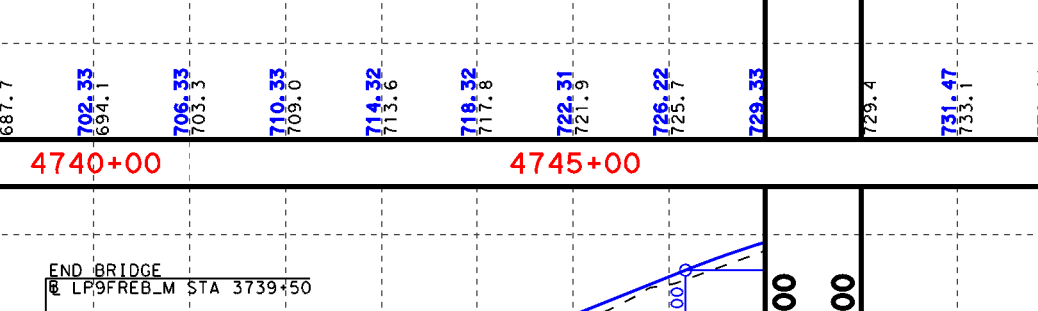
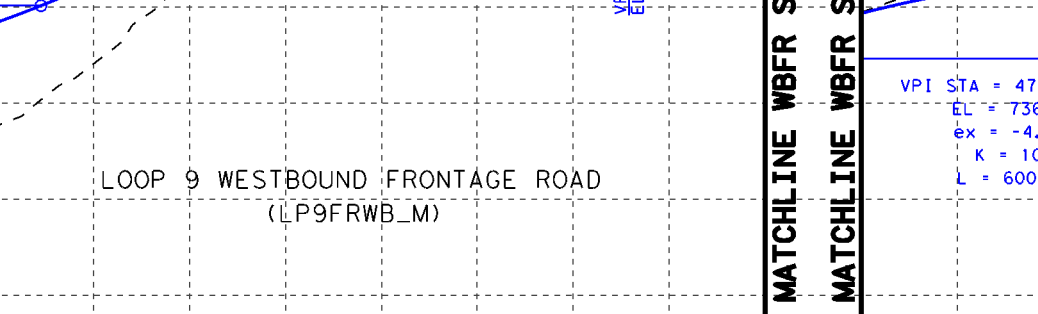
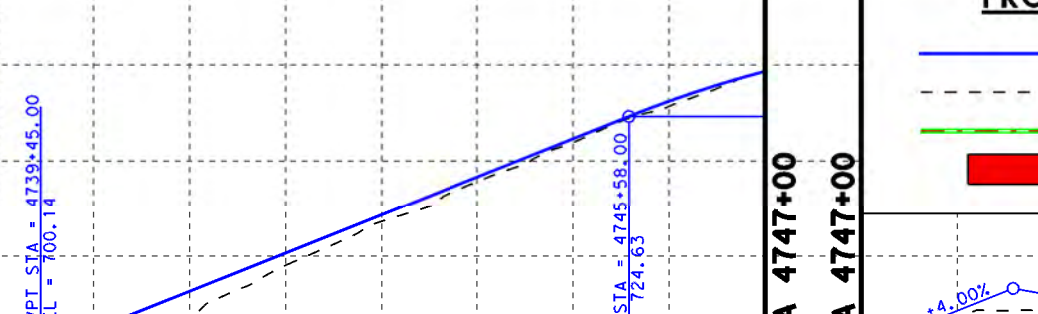
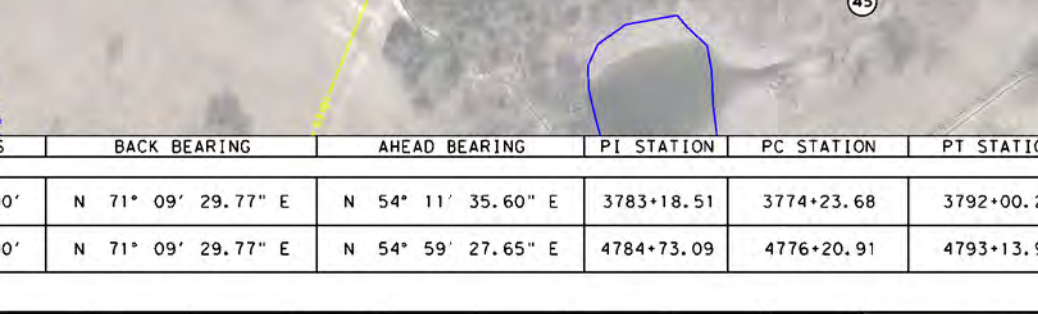
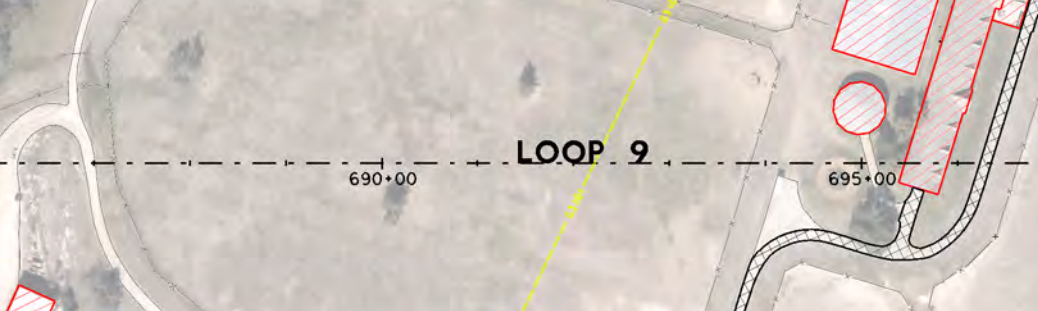
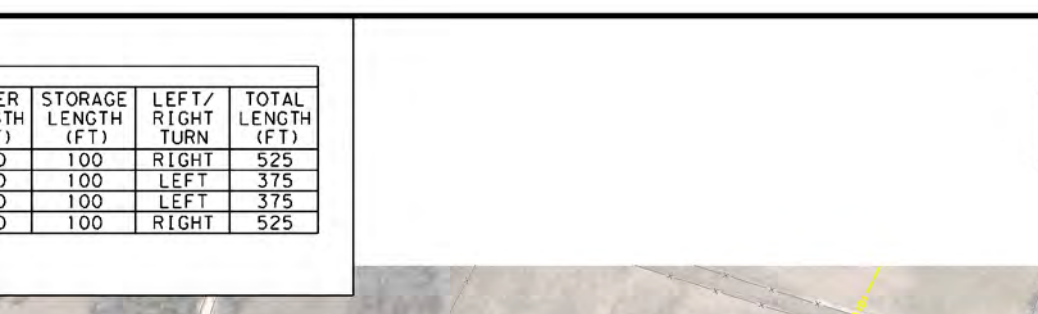
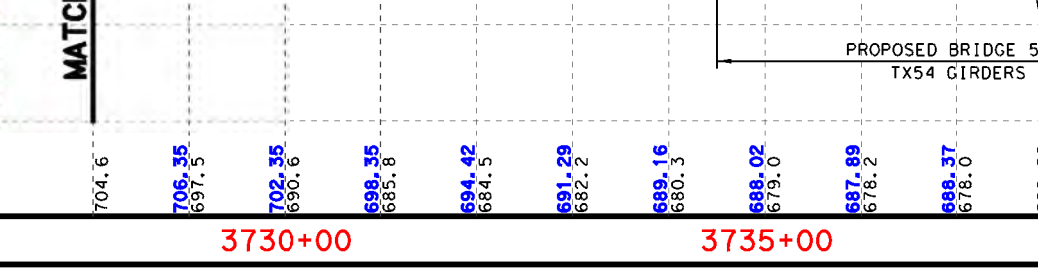
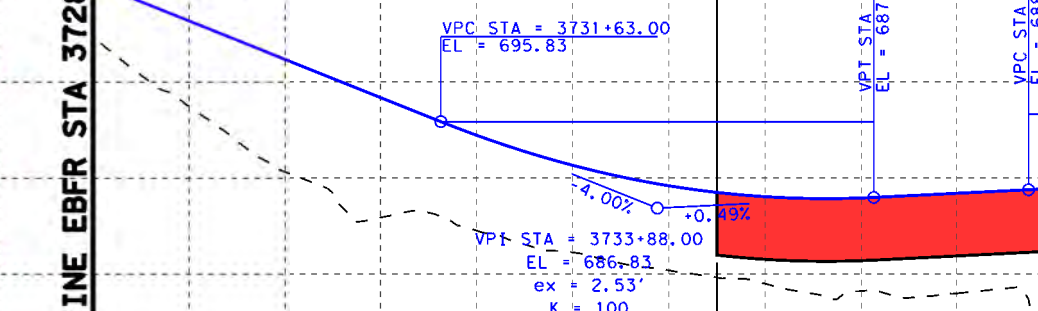
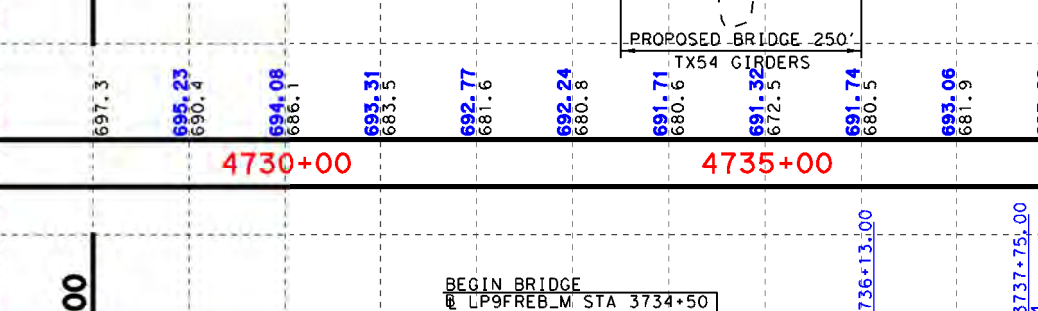
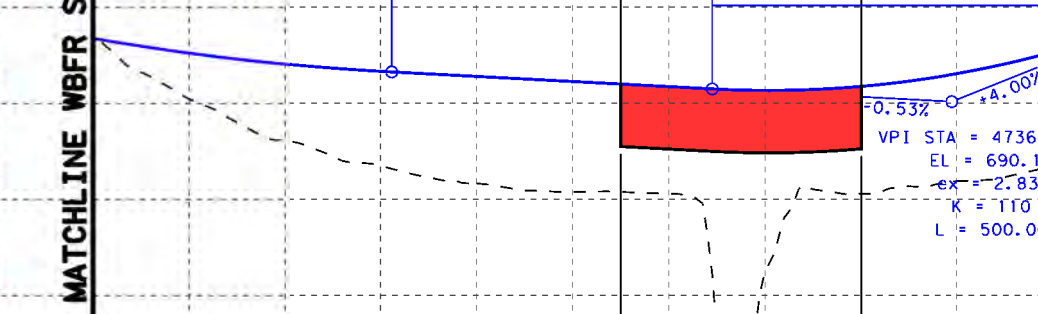
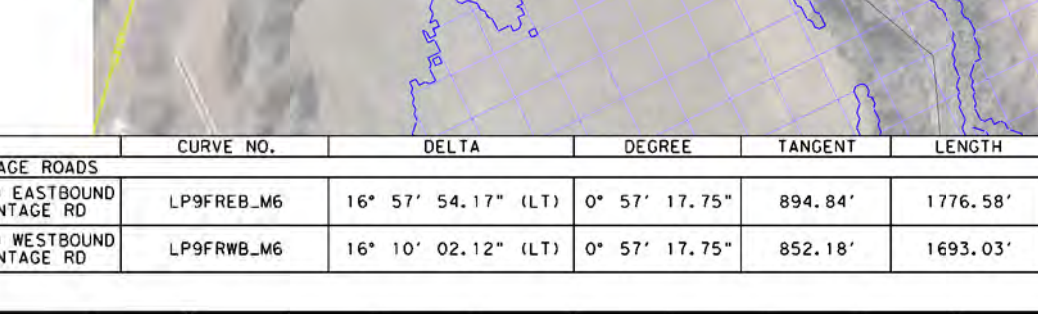
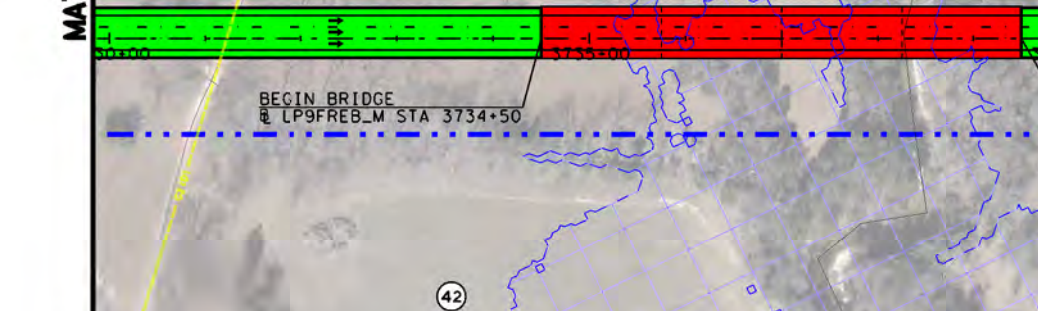
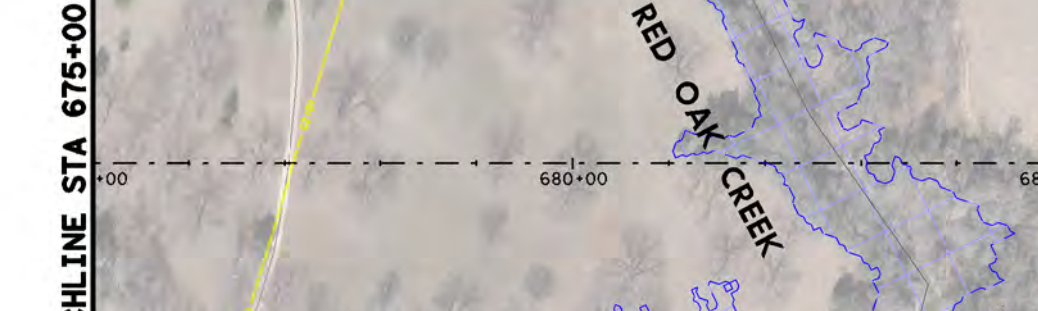
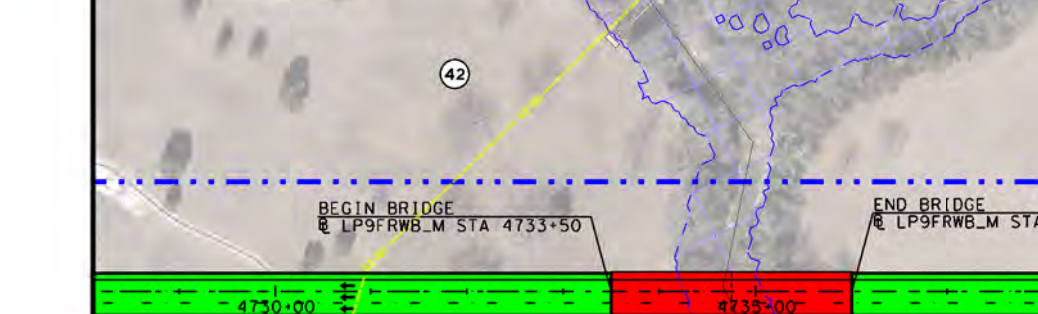
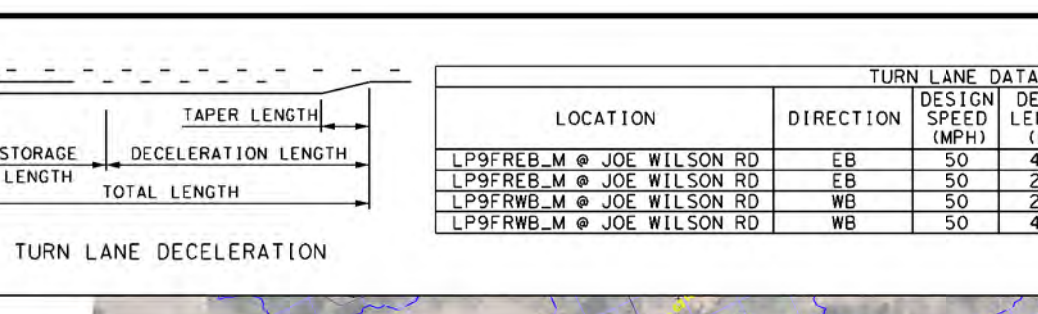
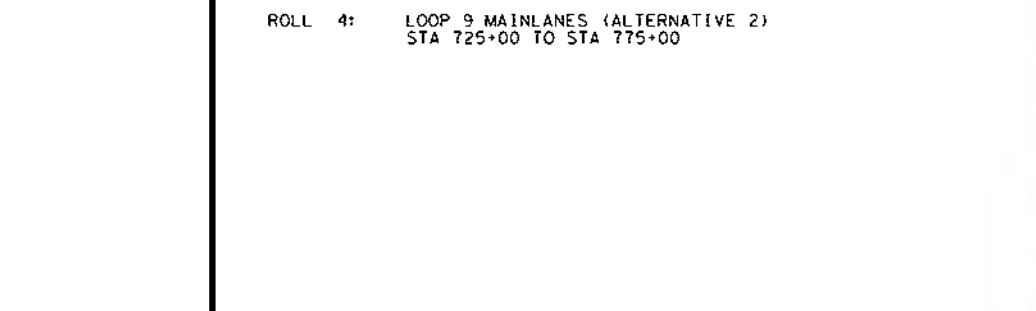
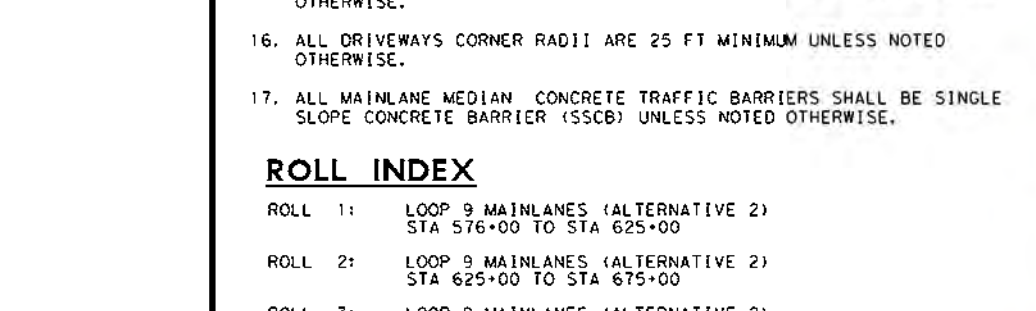
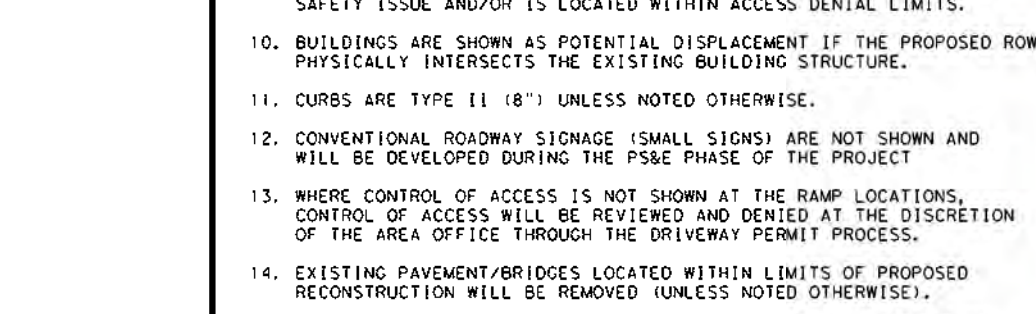
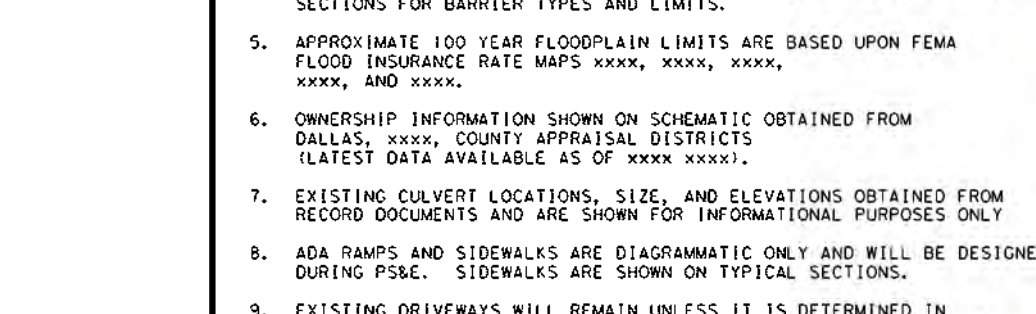
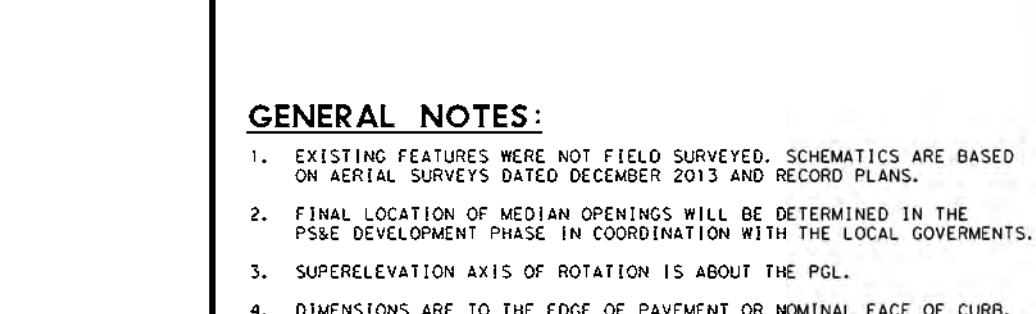
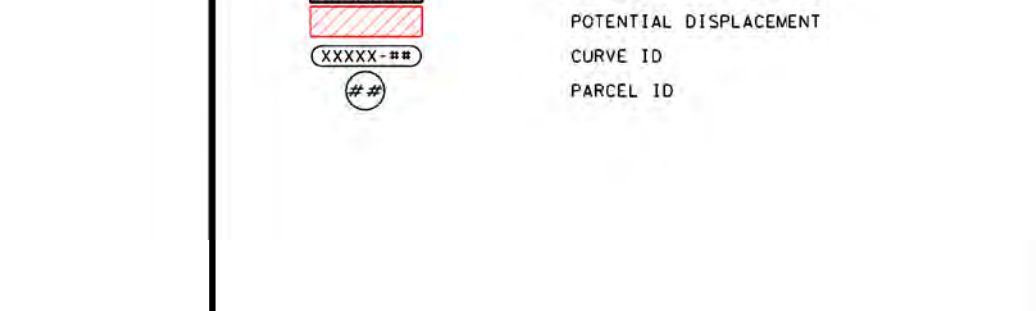
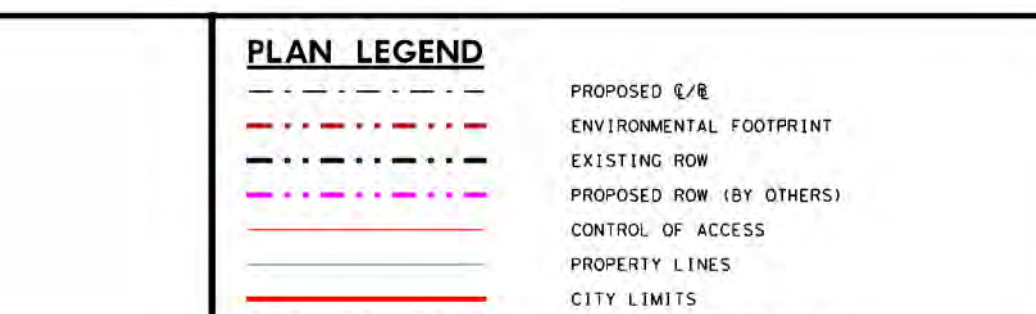
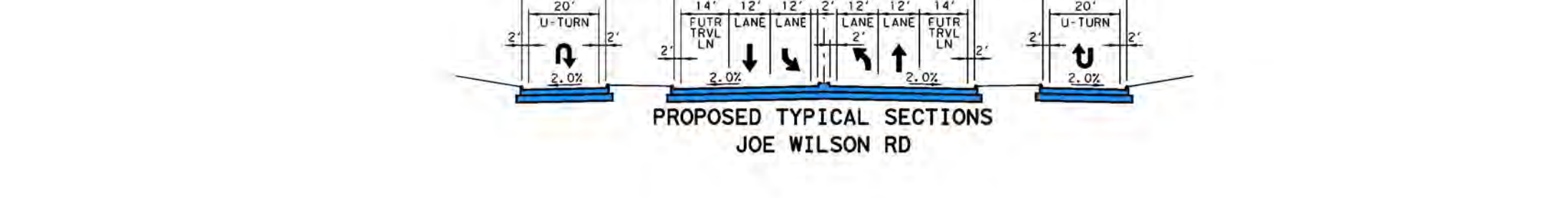
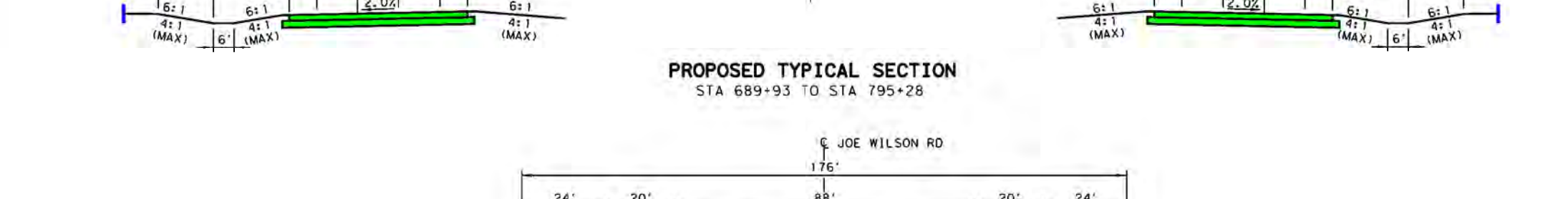
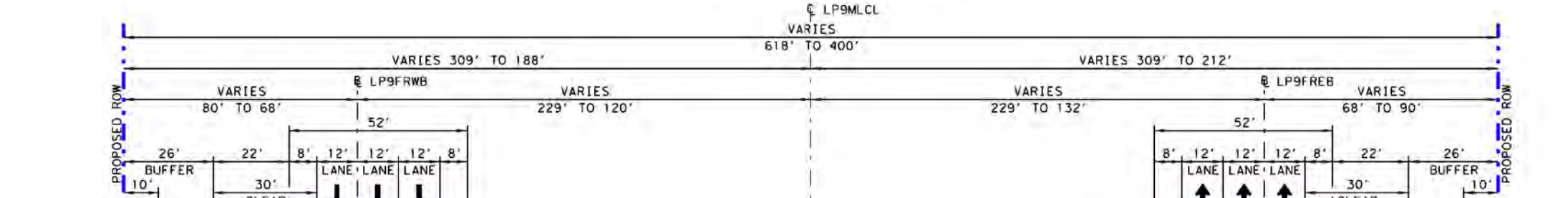
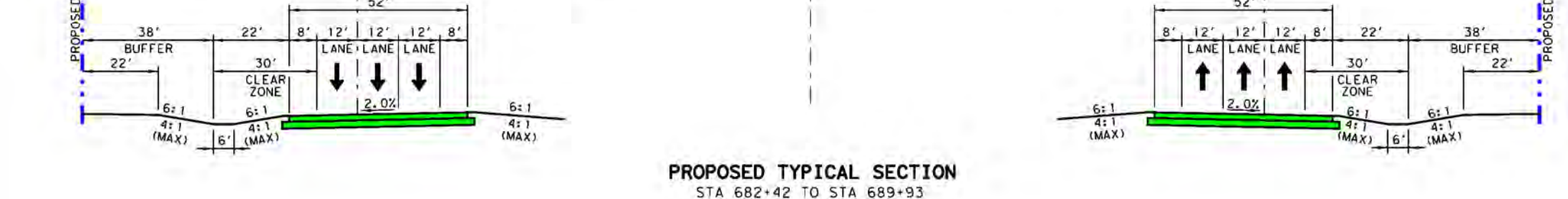
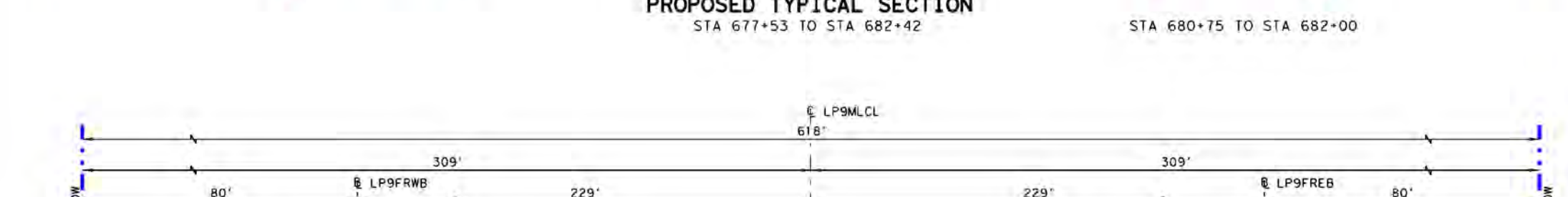
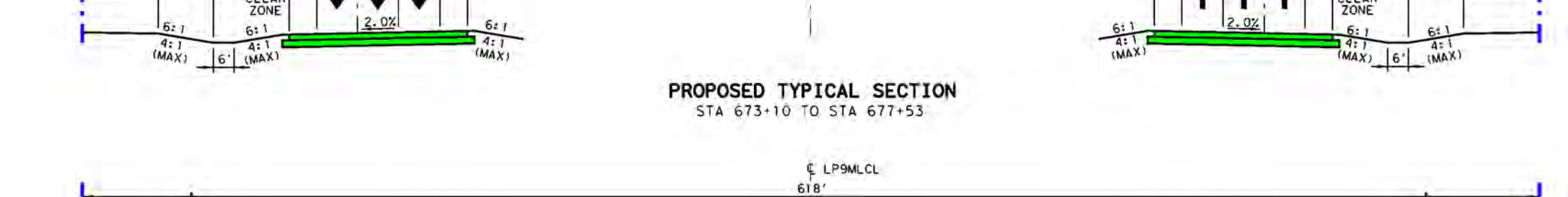
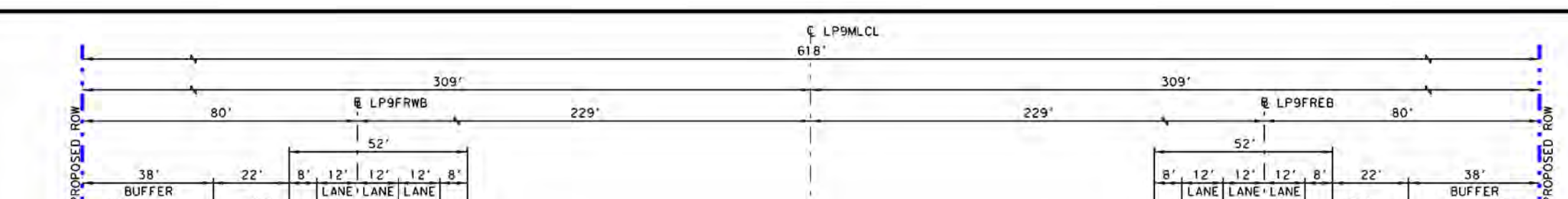
Schematic Prepared By: BGE, Inc.
REGISTRATION NUMBER F-1046
FOR INTERIM REVIEW ONLY, NOT FOR PERMITTING, BIDDING OR CONSTRUCTION.

Prepared by or under the direct supervision of:
MOSSEIN M. MOSSEINI, P.E., 118668
COLTON A. GILL, P.E., 138563
NAME: 2/3/2022
DATE

HORIZONTAL SCALE
VERTICAL SCALE

ROLL 3 OF 4

BGE, Inc.
2500 Dallas Parkway, Suite 101, Frisco, TX 75034
Tel: 972-464-4800 • www.bgeinc.com
TBPE Registration No. F-1046



DESIGN SPEEDS
DESIGN SPEEDS AND FUNCTIONAL CLASSIFICATIONS:
MAINLANES (URBAN FREEWAY) - 70 MPH
RAMP AND TRANSITION (URBAN FREEWAY) - 60 MPH
DIRECT CONNECTOR (URBAN FREEWAY) - 45 MPH
FRONTAGE ROADS (URBAN COLLECTOR) - 35 MPH
CROSS STREETS - 40 MPH
U-TURNS (URBAN COLLECTOR) - 25 MPH

ALTERNATIVE 2

ALTERNATIVE 2

60% DRAFT
PRELIMINARY, SUBJECT TO CHANGE WITHOUT NOTICE

PRELIMINARY
SUBJECT TO CHANGE BASED ON FURTHER DEVELOPMENTS RESULTING FROM PUBLIC INPUT AND TECHNICAL REVIEW

Schematic Prepared By: BGE, Inc.
REGISTRATION NUMBER F-1046
FOR INTERIM REVIEW ONLY, NOT FOR PERMITTING, BIDDING OR CONSTRUCTION.

Prepared by or under the direct supervision of:
MOSSEIN M. MOSSEINI, P.E., 118668
COLTON A. GILL, P.E., 138563
NAME: 2/3/2022
DATE

HORIZONTAL SCALE
VERTICAL SCALE

ROLL 3 OF 4

BGE, Inc.
2500 Dallas Parkway, Suite 101, Frisco, TX 75034
Tel: 972-464-4800 • www.bgeinc.com
TBPE Registration No. F-1046

BGE, Inc.
2500 Dallas Parkway, Suite 101, Frisco, TX 75034
Tel: 972-464-4800 • www.bgeinc.com
TBPE Registration No. F-1046

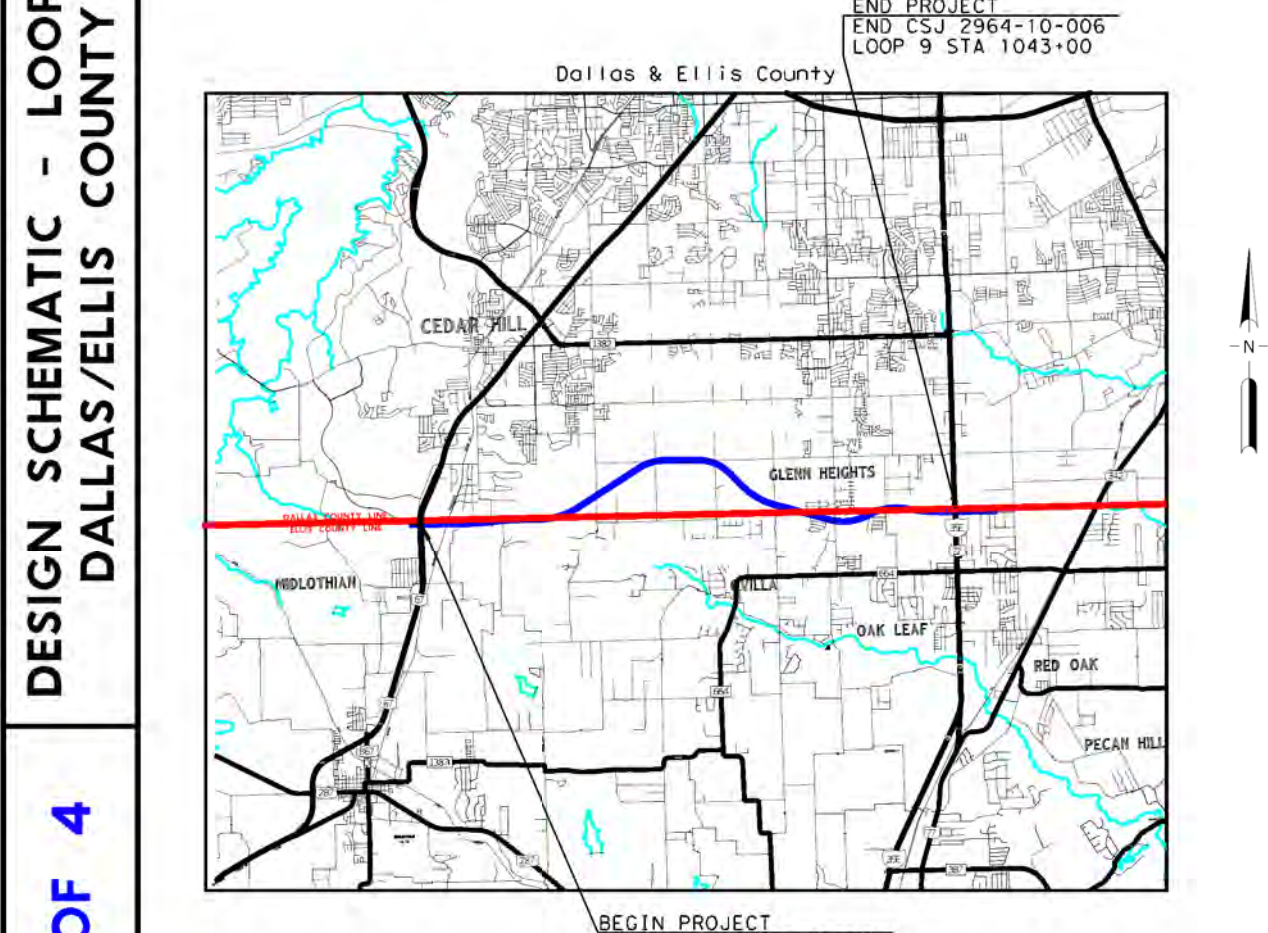
© 2022 by Texas Department of Transportation, all rights reserved.

DALLAS DISTRICT
 MOHAMED K. BUR, P.E., DISTRICT ENGINEER
 DESIGN SCHEMATIC
LOOP 9
 DALLAS & ELLIS COUNTIES
 CSJ # 2964-10-006: LOOP 9 FROM US67 TO IH35E
 Project Length = 9.4 Miles

DESIGN SPEEDS
 DESIGN SPEEDS AND FUNCTIONAL CLASSIFICATIONS:

MAINLANES (URBAL FREEWAY)	70 MPH
RAMP AND TRANSITION (URBAL FREEWAY)	60 MPH
DIRECT CONNECTOR (URBAL FREEWAY)	45 MPH
FRONTAGE ROADS (URBAN COLLECTOR)	50 MPH
CROSS STREETS	40 MPH
U-TURNS (URBAN COLLECTOR)	25 MPH

ALTERNATIVE 2



60% DRAFT
 PRELIMINARY, SUBJECT TO CHANGE WITHOUT NOTICE

PRELIMINARY
 SUBJECT TO CHANGE BASED ON FURTHER DEVELOPMENTS RESULTING FROM PUBLIC INPUT AND TECHNICAL REVIEW

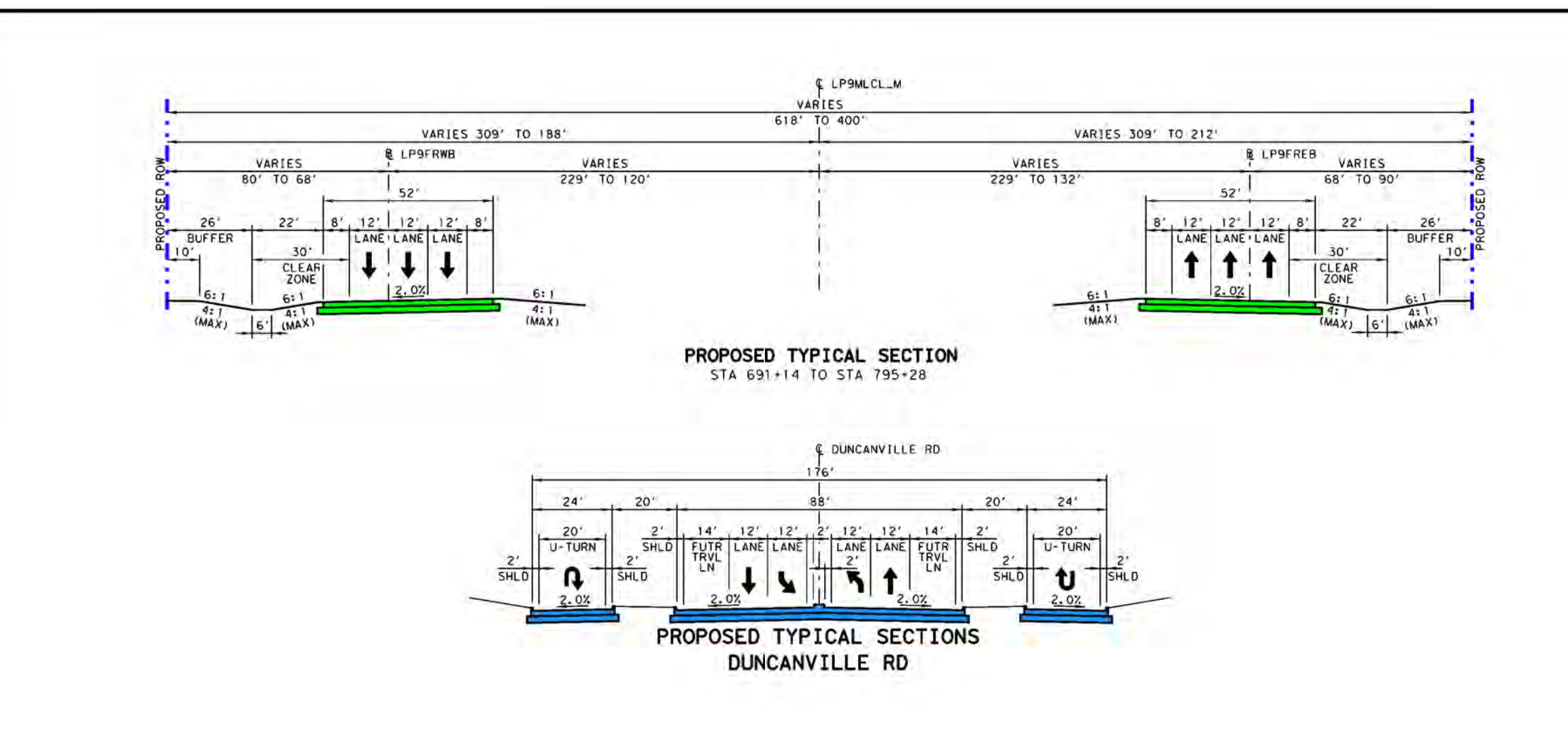
SCHMATIC PREPARED BY:
 BGE, INC.
 REGISTRATION NUMBER F-1046
 FOR INTERIM REVIEW ONLY, NOT FOR PERMITTING, BIDDING OR CONSTRUCTION.

Prepared by or under the direct supervision of:
 HOSEIN M. HOSEINI, P.E., 118666
 COLTON A. GILL, P.E., 138563
 NAME: 2/3/2022 P.E. NUMBER DATE

HORIZONTAL SCALE: 1" = 100'
 VERTICAL SCALE: 1" = 20'

ROLL 4 OF 4

BGE, Inc. 2500 Dallas Parkway, Suite 101, Frisco, TX 75034
 Tel: 972-464-4800 • www.bgeinc.com
 TBPE Registration No. F-1046



ALTERNATIVE 2



60% DRAFT
 PRELIMINARY, SUBJECT TO CHANGE WITHOUT NOTICE

PRELIMINARY
 SUBJECT TO CHANGE BASED ON FURTHER DEVELOPMENTS RESULTING FROM PUBLIC INPUT AND TECHNICAL REVIEW

SCHMATIC PREPARED BY:
 BGE, INC.
 REGISTRATION NUMBER F-1046
 FOR INTERIM REVIEW ONLY, NOT FOR PERMITTING, BIDDING OR CONSTRUCTION.

Prepared by or under the direct supervision of:
 HOSEIN M. HOSEINI, P.E., 118666
 COLTON A. GILL, P.E., 138563
 NAME: 2/3/2022 P.E. NUMBER DATE

HORIZONTAL SCALE: 1" = 100'
 VERTICAL SCALE: 1" = 20'

ROLL 4 OF 4

BGE, Inc. 2500 Dallas Parkway, Suite 101, Frisco, TX 75034
 Tel: 972-464-4800 • www.bgeinc.com
 TBPE Registration No. F-1046

PLAN LEGEND

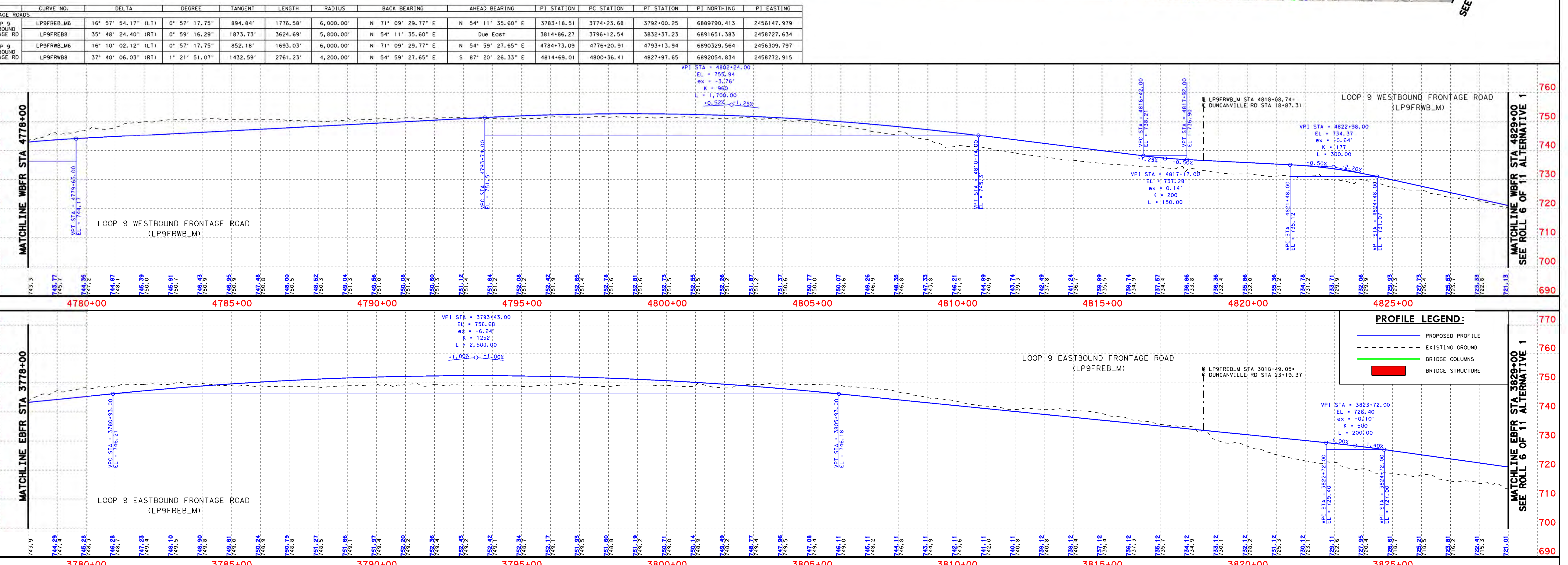
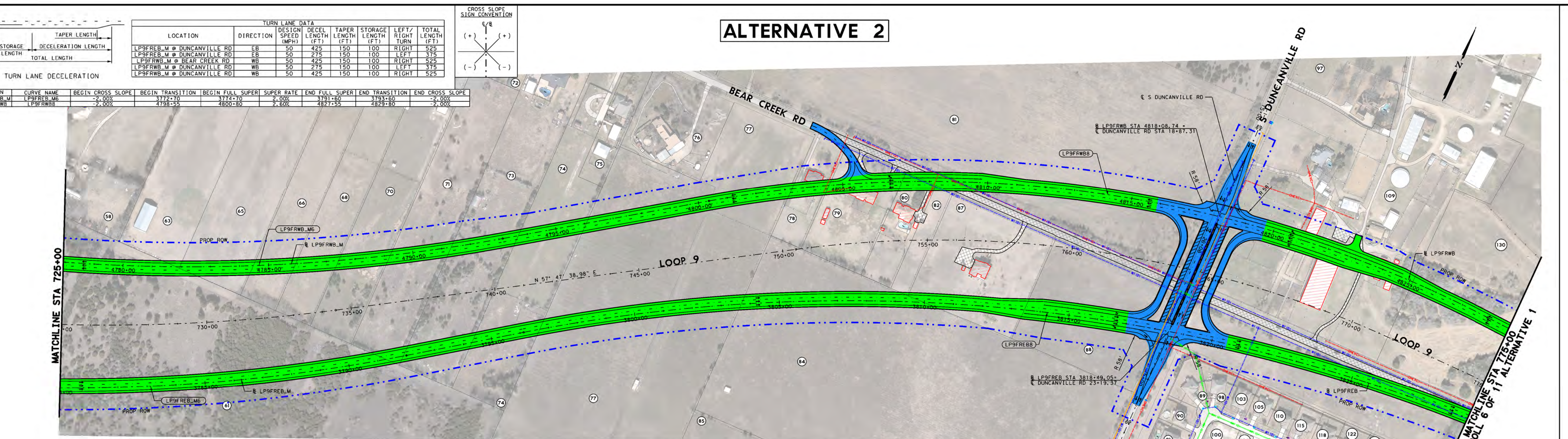
- PROPOSED E/R ENVIRONMENTAL FOOTPRINT
- EXISTING ROW
- PROPOSED ROW (BY OTHERS)
- CONTROL OF ACCESS
- PROPERTY LINES
- CITY LIMITS
- 100 YR FLOODPLAIN LIMITS
- EXISTING PLANNING FEATURES
- COUNTY LINE
- PROPOSED EDGE OF PAVEMENT
- PROPOSED TRAFFIC BARRIER
- PROPOSED RETAINING WALL
- PROPOSED BRIDGE BENT
- PROPOSED CULVERT
- PROPOSED DIRECTION OF TRAVEL
- EXISTING DIRECTION OF TRAVEL
- PROPOSED MAIN LANES
- PROPOSED FRONTAGE ROAD
- PROPOSED RAMP
- PROPOSED CROSS STREET
- BRIDGE BY OTHERS
- MAINLANES BY OTHERS
- FRONTAGE ROADS BY OTHERS
- RAMP BY OTHERS
- CROSS STREET BY OTHERS
- PAVEMENT TO BE REMOVED
- POTENTIAL DISPLACEMENT
- CURVE ID
- PARCEL ID

GENERAL NOTES:

- EXISTING FEATURES WERE NOT FIELD SURVEYED. SCHEMATICS ARE BASED ON AERIAL SURVEYS DATED DECEMBER 2019 AND RECORD PLANS.
- FINAL LOCATION OF MEDIAN OPENINGS WILL BE DETERMINED IN THE PS&E DEVELOPMENT PHASE IN COORDINATION WITH THE LOCAL GOVERNMENTS.
- SUPERELEVATION AXIS OF ROTATION IS ABOUT THE P.O.L.
- DIMENSIONS ARE TO THE EDGE OF PAVEMENT OR MINIMAL FACE OF CURB, RAIL, BARRIER, OR WALL UNLESS NOTED OTHERWISE. REFER TO TYPICAL SECTIONS FOR BARRIER TYPES AND LIMITS.
- APPROXIMATE 100 YEAR FLOODPLAIN LIMITS ARE BASED UPON FEMA XXXX AND XXXX.
- ONSHIPPMENT INFORMATION SHOWN ON SCHEMATIC OBTAINED FROM DALLAS COUNTY APPRAISAL DISTRICTS LATEST DATA AVAILABLE AS OF XXXX XXXX.
- EXISTING CULVERT LOCATIONS, SIZE, AND ELEVATIONS OBTAINED FROM RECORD DOCUMENTS AND ARE SHOWN FOR INFORMATIONAL PURPOSES ONLY.
- ADA RAMP AND SIGNALLS ARE DIAGNOSTIC ONLY AND WILL BE DESIGNED DURING PS&E. SIDEWALKS ARE SHOWN ON TYPICAL SECTIONS.
- EXISTING DRIVEWAYS WILL REMAIN UNLESS IT IS DETERMINED IN COORDINATION WITH THE LOCAL GOVERNMENT THAT THE DRIVEWAY IS A SAFETY ISSUE AND/OR IS LOCATED WITHIN ACCESS DENIAL LIMITS.
- BUILDINGS ARE SHOWN AS POTENTIAL DISPLACEMENT IF THE PROPOSED ROW PHYSICALLY INTERSECTS THE EXISTING BUILDING STRUCTURE.
- CURBS ARE TYPE II (8") UNLESS NOTED OTHERWISE.
- CONVENTIONAL ROADWAY SIGNAGE (SMALL SIGNS) ARE NOT SHOWN AND WILL BE DEVELOPED DURING THE PS&E PHASE OF THE PROJECT.
- WHERE CONTROL OF ACCESS IS NOT SHOWN AT THE RAMP LOCATIONS, CONTROL OF ACCESS WILL BE REVOKED AND CANCELED AT THE DISCRETION OF THE AREA OFFICE THROUGH THE DRIVEWAY PERMIT PROCESS.
- EXISTING PAVEMENT/PERIODES LOCATED WITHIN LIMITS OF PROPOSED RECONSTRUCTION WILL BE REMOVED UNLESS NOTED OTHERWISE.
- ALL CROSS STREETS CORNER RADII ARE 50 FT MINIMUM UNLESS NOTED OTHERWISE.
- ALL DRIVEWAYS CORNER RADII ARE 25 FT MINIMUM UNLESS NOTED OTHERWISE.
- ALL MAINLINE MEDIUM CONCRETE TRAFFIC BARRIERS SHALL BE SINGLE SLOPE CONCRETE BARRIER (SSCB) UNLESS NOTED OTHERWISE.

ROLL INDEX

ROLL 11	LOOP 9 MAINLANES (ALTERNATIVE 2)	STA 315+00 TO STA 675+00
ROLL 21	LOOP 9 MAINLANES (ALTERNATIVE 2)	STA 675+00 TO STA 735+00
ROLL 31	LOOP 9 MAINLANES (ALTERNATIVE 2)	STA 735+00 TO STA 795+00
ROLL 41	LOOP 9 MAINLANES (ALTERNATIVE 2)	STA 795+00 TO STA 1043+00

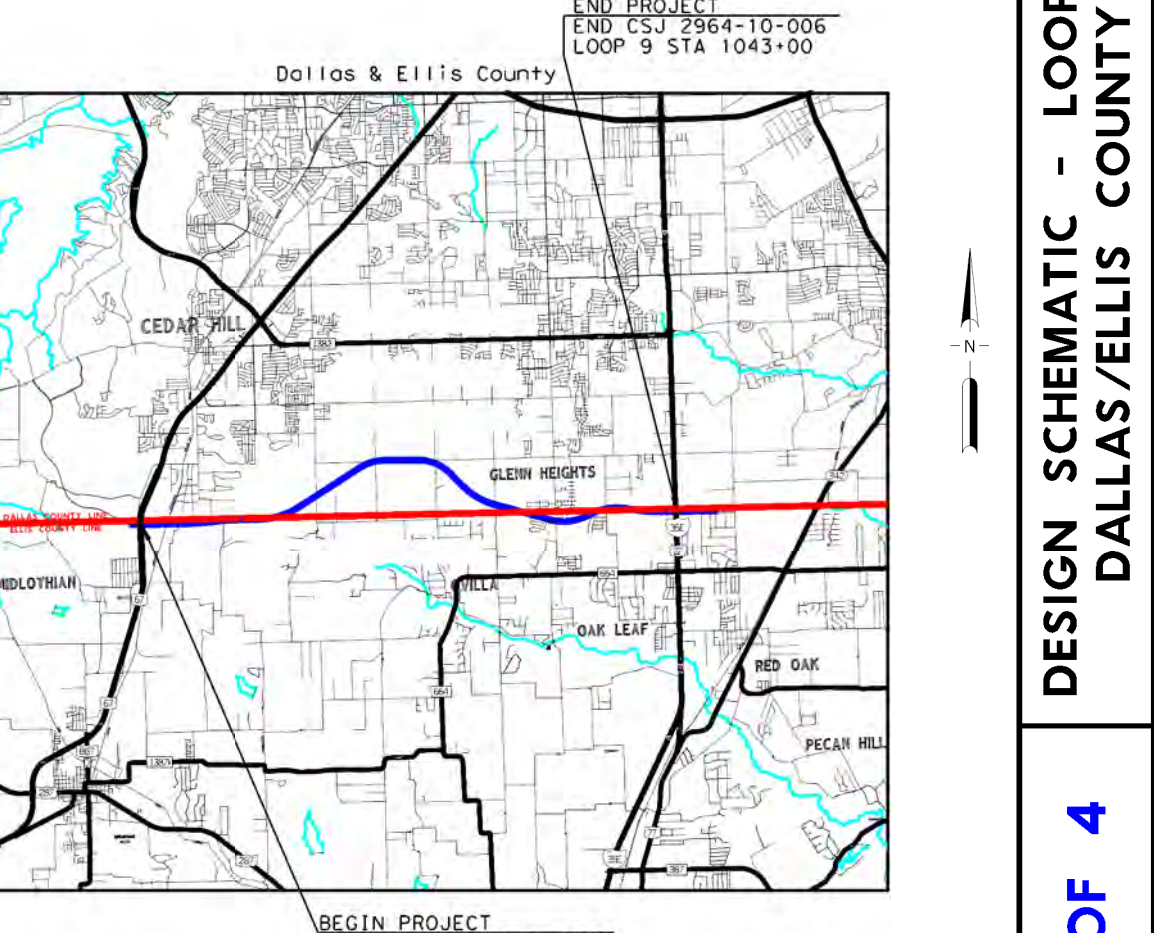


DALLAS DISTRICT
 MOHAMED K. BUR, P.E., DISTRICT ENGINEER
 DESIGN SCHEMATIC
LOOP 9
 DALLAS & ELLIS COUNTIES
 CSJ # 2964-10-006: LOOP 9 FROM US67 TO IH35E
 Project Length = 9.4 Miles

DESIGN SPEEDS
 DESIGN SPEEDS AND FUNCTIONAL CLASSIFICATIONS:

MAINLANES (URBAL FREEWAY)	70 MPH
RAMP AND TRANSITION (URBAL FREEWAY)	60 MPH
DIRECT CONNECTOR (URBAL FREEWAY)	45 MPH
FRONTAGE ROADS (URBAN COLLECTOR)	50 MPH
CROSS STREETS	40 MPH
U-TURNS (URBAN COLLECTOR)	25 MPH

ALTERNATIVE 2



60% DRAFT
 PRELIMINARY, SUBJECT TO CHANGE WITHOUT NOTICE

PRELIMINARY
 SUBJECT TO CHANGE BASED ON FURTHER DEVELOPMENTS RESULTING FROM PUBLIC INPUT AND TECHNICAL REVIEW

SCHMATIC PREPARED BY:
 BGE, INC.
 REGISTRATION NUMBER F-1046
 FOR INTERIM REVIEW ONLY, NOT FOR PERMITTING, BIDDING OR CONSTRUCTION.

Prepared by or under the direct supervision of:
 HOSEIN M. HOSEINI, P.E., 118666
 COLTON A. GILL, P.E., 138563
 NAME: 2/3/2022 P.E. NUMBER DATE

HORIZONTAL SCALE: 1" = 100'
 VERTICAL SCALE: 1" = 20'

ROLL 4 OF 4

BGE, Inc. 2500 Dallas Parkway, Suite 101, Frisco, TX 75034
 Tel: 972-464-4800 • www.bgeinc.com
 TBPE Registration No. F-1046

BGE, Inc. 2500 Dallas Parkway, Suite 101, Frisco, TX 75034
 Tel: 972-464-4800 • www.bgeinc.com
 TBPE Registration No. F-1046
 Copyright 2022

DESIGN SCHEMATIC - LOOP 9 DALLAS/ELLIS COUNTY
 COUNTY: DALLAS/ELLIS COUNTY
 DATE: FEBRUARY 2022
 ROLL 4 OF 4
 BGE, Inc. 2500 Dallas Parkway, Suite 101, Frisco, TX 75034
 Tel: 972-464-4800 • www.bgeinc.com
 TBPE Registration No. F-1046
 Copyright 2022