



# Public Meeting

Farm to Market Road (FM) 455  
Feasibility Study

From Dallas Parkway to Shady Brook Lane  
in Collin County, Texas

---





HELP

# #EndTheStreakTX

End the streak of daily deaths on Texas roadways.

[TxDOT.gov](https://www.txdot.gov) (Keyword: #EndTheStreakTX)



#EndTheStreakTX Toolkit





**Inform the public of study status and present recommendations.**

**Describe the study so that the public can determine how they may be affected.**

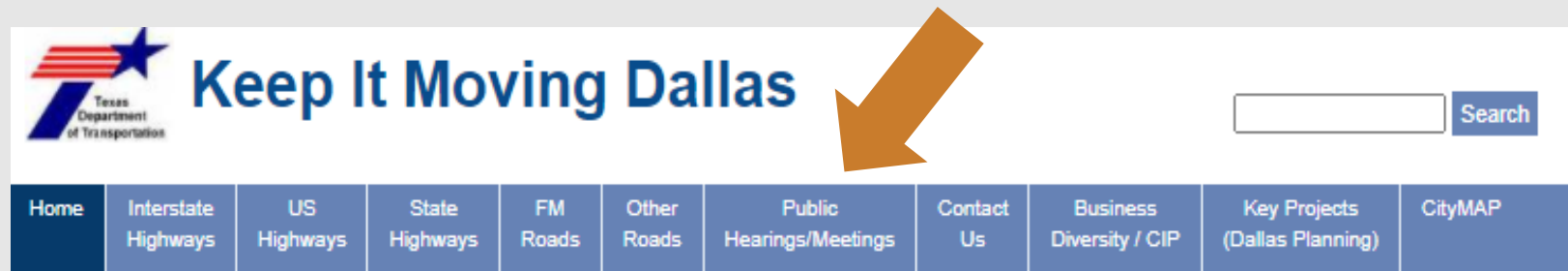
**Offer the public an opportunity to ask questions and provide input.**

**Develop a record of public participation.**



## WEBSITE:

- [www.keepitmovingdallas.com/projects/fm-roads/fm455FS](http://www.keepitmovingdallas.com/projects/fm-roads/fm455FS)
- [www.keepitmovingdallas.com](http://www.keepitmovingdallas.com)  
Under “Public Hearings/Meetings”





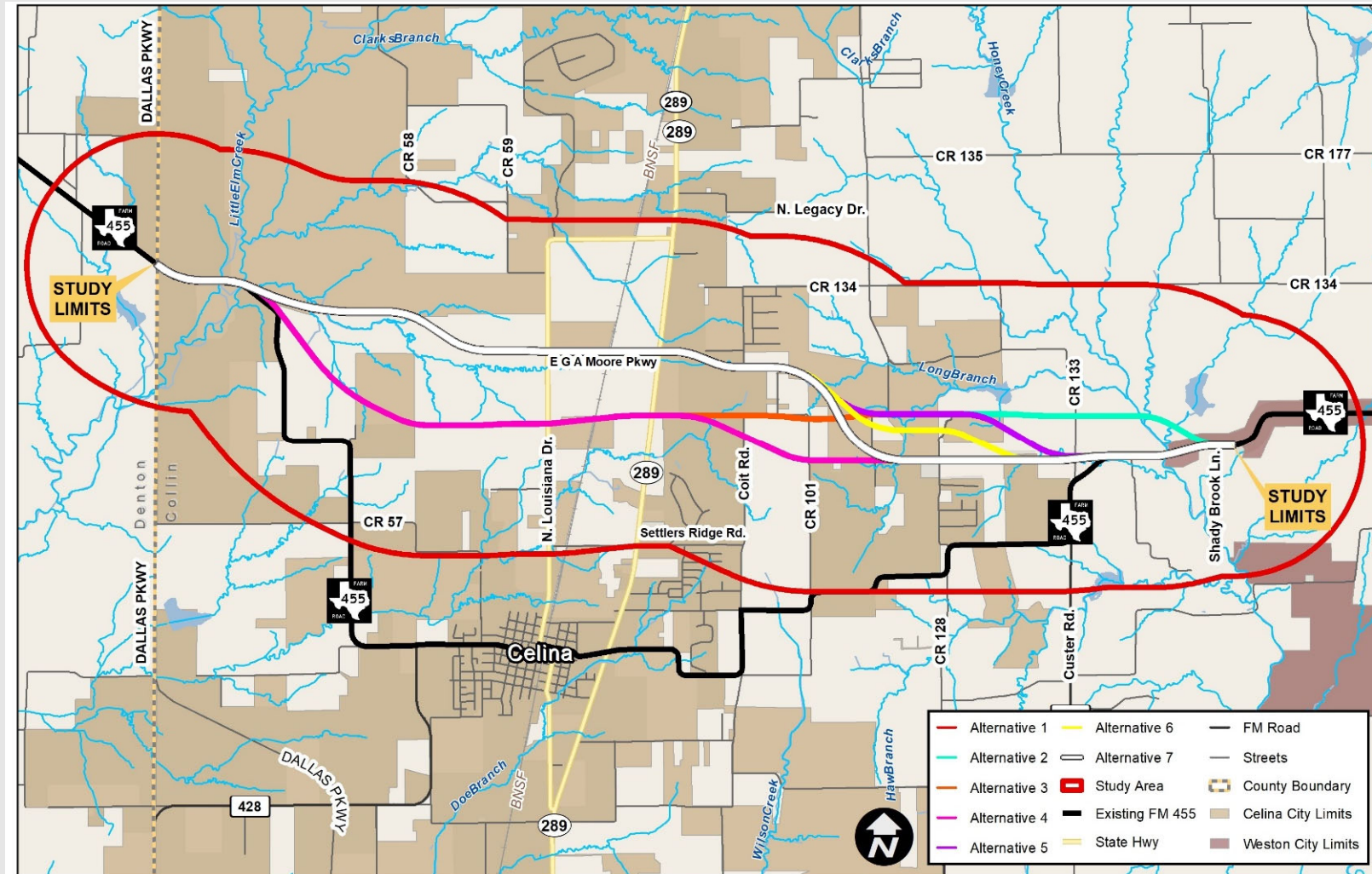
## STUDY LIMITS:

FM 455 from Dallas Parkway to Shady Brook Lane

## STUDY LENGTH:

Approximately 9 miles

The feasibility study analyzes potential roadway alignment options for the FM 455 corridor, including improving existing alignments and constructing possible new corridor alignment locations.

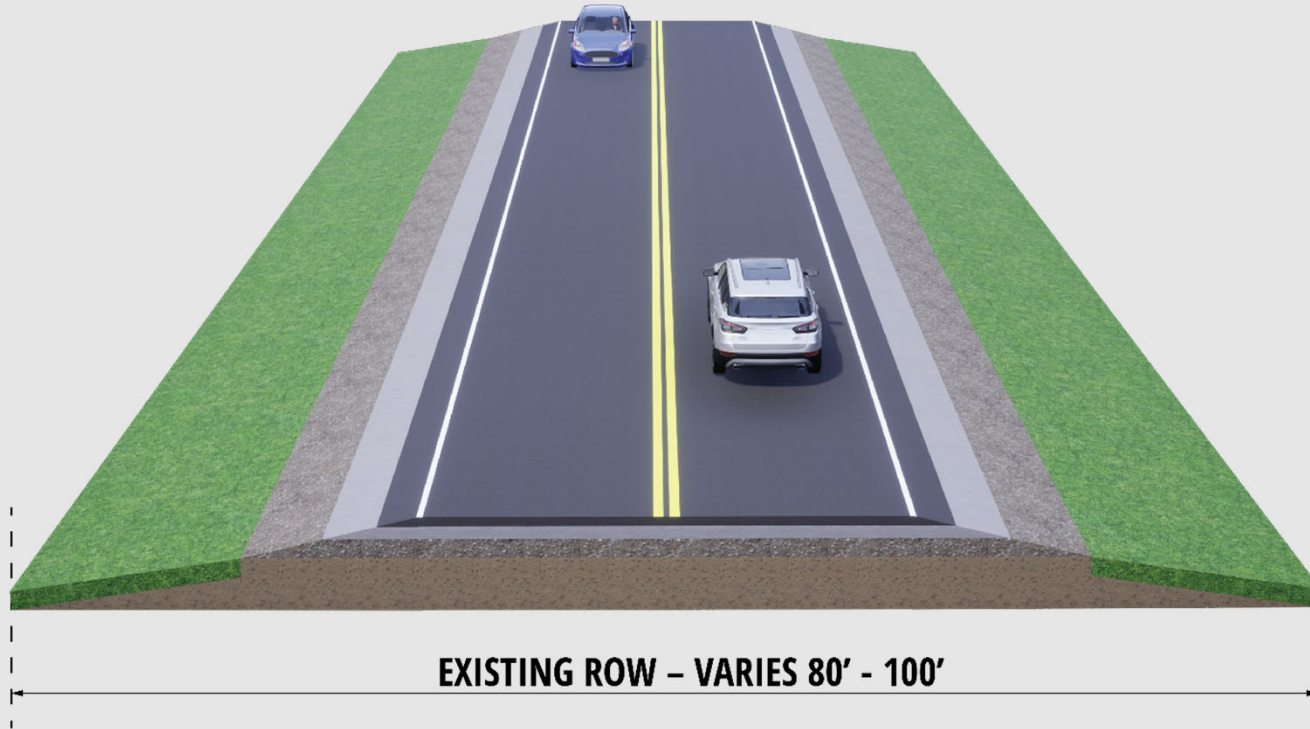




The study **purpose** is to identify and evaluate FM 455 roadway options to:

- ▶ Improve traffic operations
- ▶ Increase mobility and safety
- ▶ Enhance local and regional connectivity

The study is **needed** because local development and population growth continue to increase, resulting in higher traffic volumes, reduced mobility and safety conditions, and inefficient roadway connections.

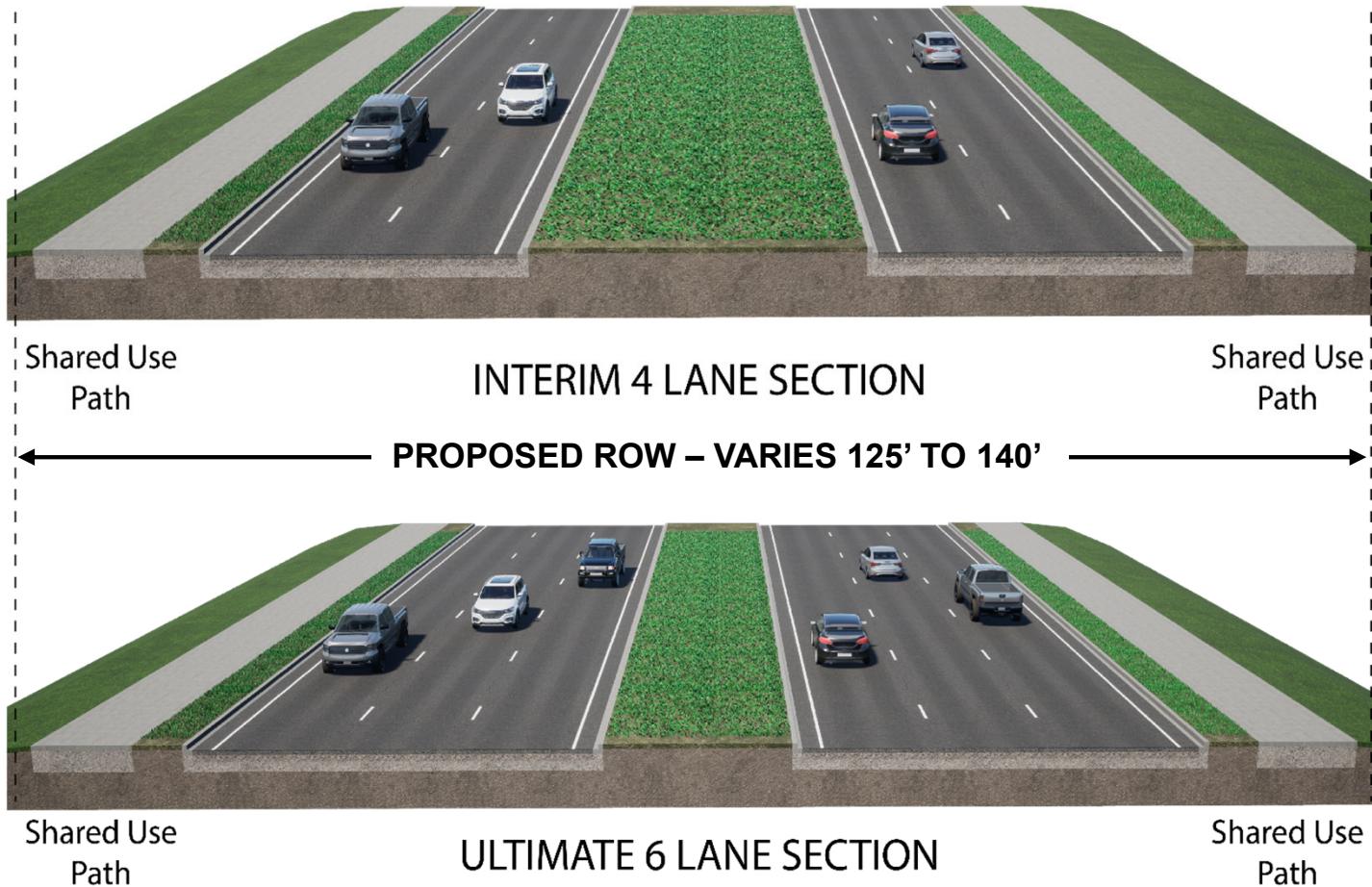


- Mainly consists of two 12-foot-wide rural lanes
- Two-foot-wide shoulders
- No center raised median
- No sidewalks and shared-use paths
- No grade separated intersections
- At-grade railroad crossings

# Proposed Typical Section

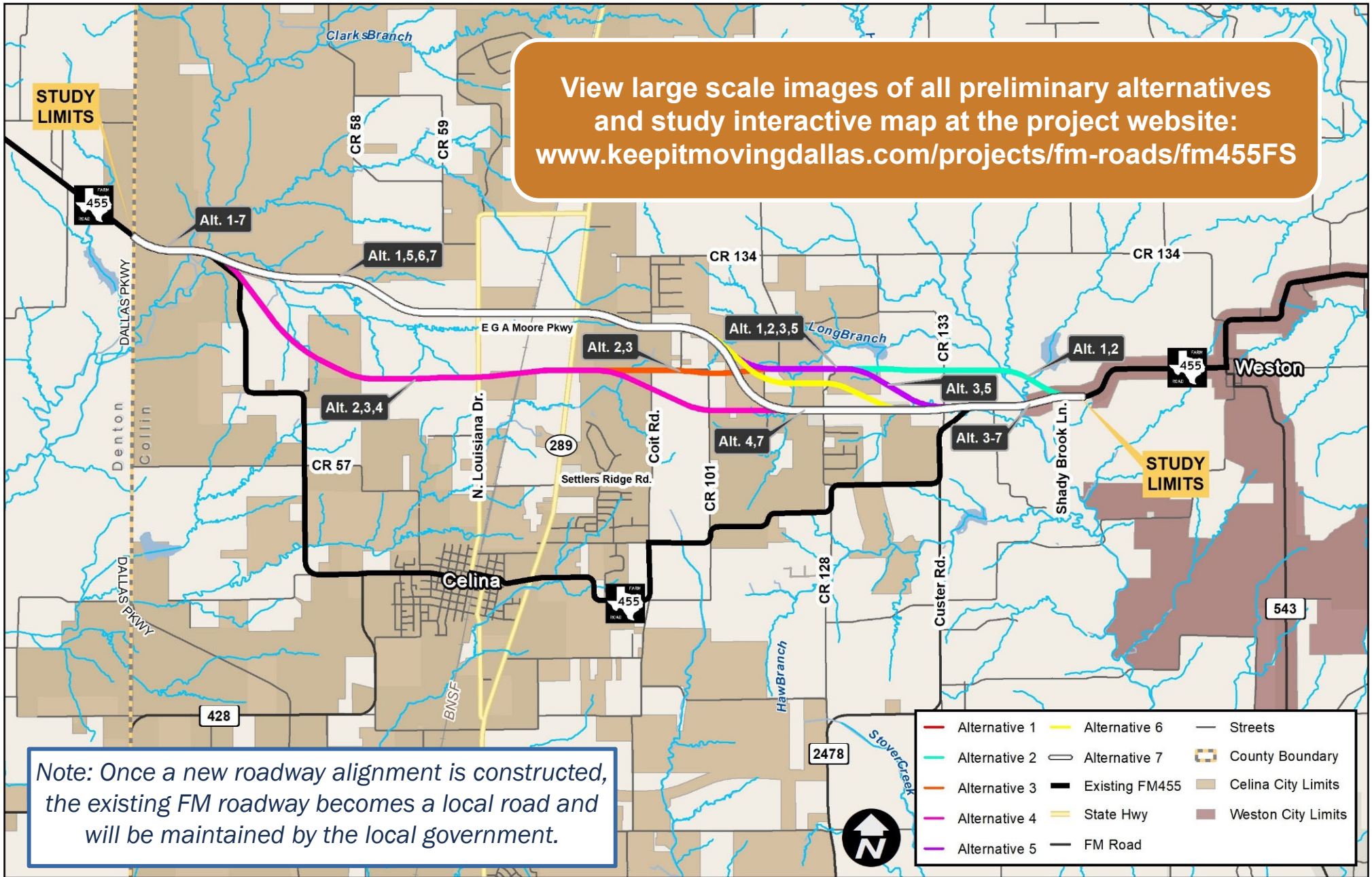


- Construct an urban interim four-lane (ultimate six-lane) roadway
- Lane widths vary from 11-foot to 12-foot-wide lanes depending on ROW restrictions
- Proposed 10-foot shared use paths and a variable-width raised median
- Turn lanes, where applicable, at side streets and intersections
- New location roadway at portions of proposed alignments





# Preliminary Alternatives



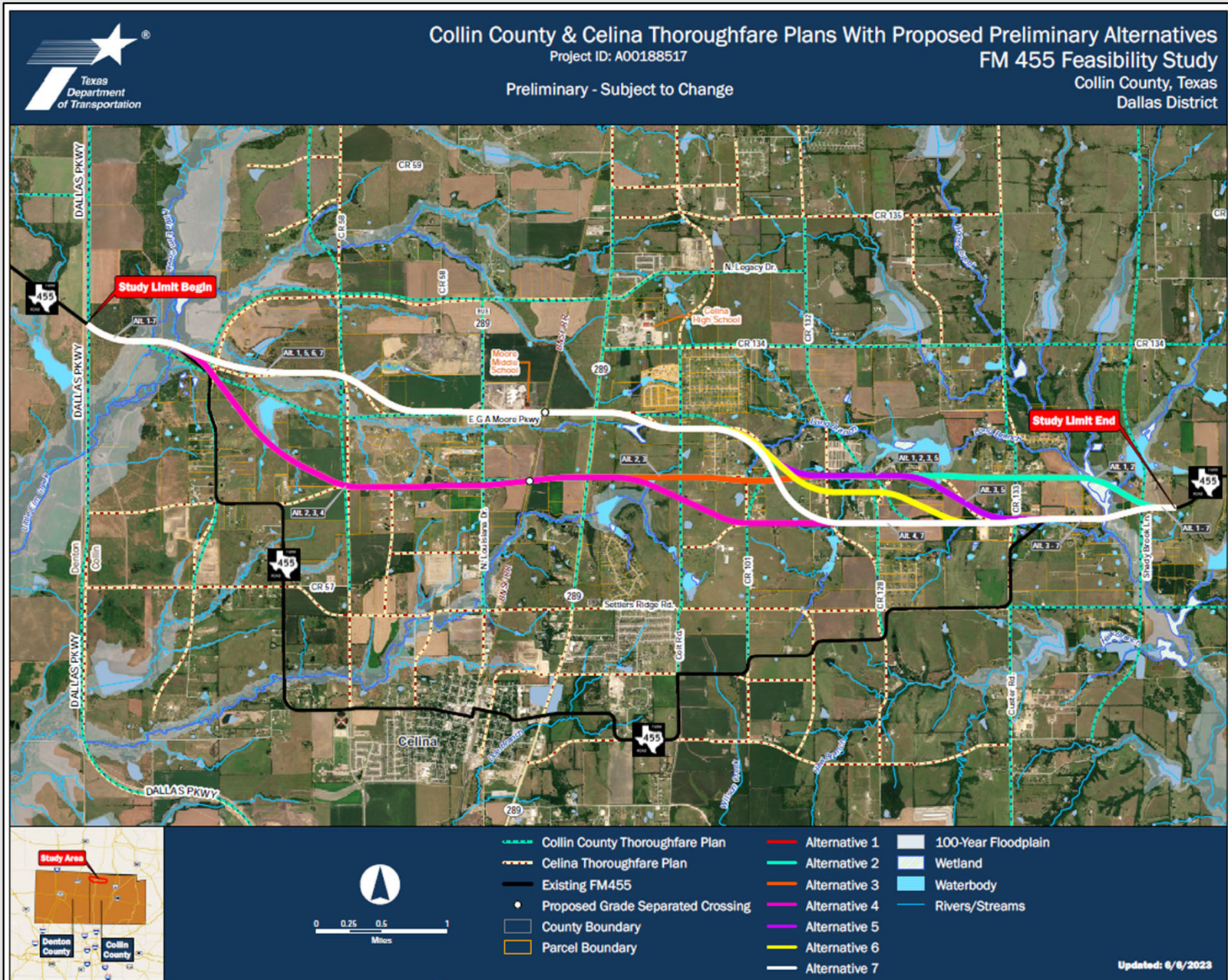


The FM 455 Preliminary Alternatives are proposed to:

- ▶ Accommodate other planned developments
- ▶ Provide a more direct connection through the study limits
- ▶ Consider local government input
- ▶ Correspond with existing thoroughfare plans\*

**\*Thoroughfare plans are prepared by local governments to help in the planning of future roads and developments for their cities and counties.**

# Celina and Collin County Thoroughfare Plans



This map can be viewed full size on the project website.



## Preliminary Alternatives were evaluated by several criteria under the following main categories:

- Purpose and Need
- Engineering Requirements
- Potential Property Impacts and Right of Way Requirements
- Environmental and Natural Resource Constraints
- Public, Stakeholder, and Agency Input

FM 455 Feasibility Study - Preliminary Alternatives Evaluation Matrix From Dallas Parkway to Shady Brook Lane ID: A00188517										
ANALYSIS MATRIX										
SCREENING / EVALUATION CATEGORY		No Build	Widening Existing Alignment	Alignment 1	Alignment 2	Alignment 3	Alignment 4	Alignment 5	Alignment 6	Alignment 7
		●	○	●	●	○	○	○	○	○
Purpose & Need	Improve East-West Mobility	○	○	●	●	●	●	●	●	●
	Improve Safety	○	○	●	●	●	●	●	●	●
Engineering	Total Segment Length along CI (miles)	12.4	12.4	8.6	8.8	8.9	8.8	8.7	8.7	8.8
	Number of General Intersections: Cross Streets that intersect at a skew greater than 15 degrees	3	3	2	2	2	4	2	5	4
	Number of Major Utility Conflicts: Any location where we are on top of and run parallel to a utility line. (Not including gas lines)	0	16	2	1	1	1	2	2	2
	Gas Pipeline Crossings (count)	0	2	4	2	2	2	4	4	4
	Gas Line Relocation (feet)	0	0	8006	0	0	0	8006	8006	8006
	Curves with Reduced Design Speed: Curves that do not meet the 55 MPH Criteria at Minimum	25	25	0	0	0	0	0	0	0
	Parcels Impacted	0	277	74	88	99	92	82	83	86
Displacements & Right-of-Way	Residential Displacements	0	32	1	0	2	2	3	3	3
	Business Displacements	0	18	1	0	0	0	1	1	1
	Other Displacements (includes barns, sheds, and outbuildings)	0	3	4	5	4	3	3	0	1
	Potential Damaged Buildings: Any existing structure that is within 40ft of ROW	0	21	5	7	7	6	8	9	11
	Amount of New Right-of-Way Required (acres)	0	73	127	138	149	131	143	127	128
Environmental & Natural Resources	Number of Rivers/Streams Crossed	13	13	14	14	14	14	14	13	13
	Protected Land/Parks Along Corridor	2	2	0	0	0	0	0	0	0
	Prime Farmland Present	Yes	Yes	Yes	Yes	Yes	Yes	Yes	Yes	Yes
	Number of Hazardous Materials Sites	0	0	0	0	0	0	0	0	0
	Oil and Gas Wells (count)	0	0	0	0	0	0	0	0	0
	NW Wetland Features (count)	0	7	6	9	12	12	8	9	8
	Equestrian Facility with Potential Impacts (count): Legacy Equestrian Center and Lancaster Hill Stables	0	0	0	0	1	2	1	2	2
Community Impacts & Cultural Resources	Floodplains within Proposed Right-of-Way (acres)	0	13	26	24	26	18	24	20	20
	Future Development Impacts: All developments that are east to or on top of the ROW	0	4	6	5	5	5	6	6	7
	Presence of EJ Population (Yes/No)	No	No	No	No	No	No	No	No	No
	Number of Adjacent Places of Worship	1	1	0	0	0	0	0	0	0
	Impacts to Ponds	0	3	3	3	4	3	4	2	2
	Number of Adjacent Public School Property(ies)	1	1	2	0	0	0	2	2	2
	Archaeological Sites, Cemeteries, and Historic Properties	2	2	0	0	0	0	0	0	0
Stakeholder, Agency, and Public	Estimated Total Project Costs in Millions (\$M)	50	\$174	\$121	\$123	\$124	\$124	\$121	\$121	\$123
	Adherence to Collin County Thoroughfare Plan	○	○	○	○	○	○	○	○	○
	Adherence to Celina Thoroughfare Plan	○	○	●	○	○	○	●	○	○
	City of Celina									
	Collin County									
Public										

TO BE DETERMINED BASED ON INPUT FROM PUBLIC MEETING #1

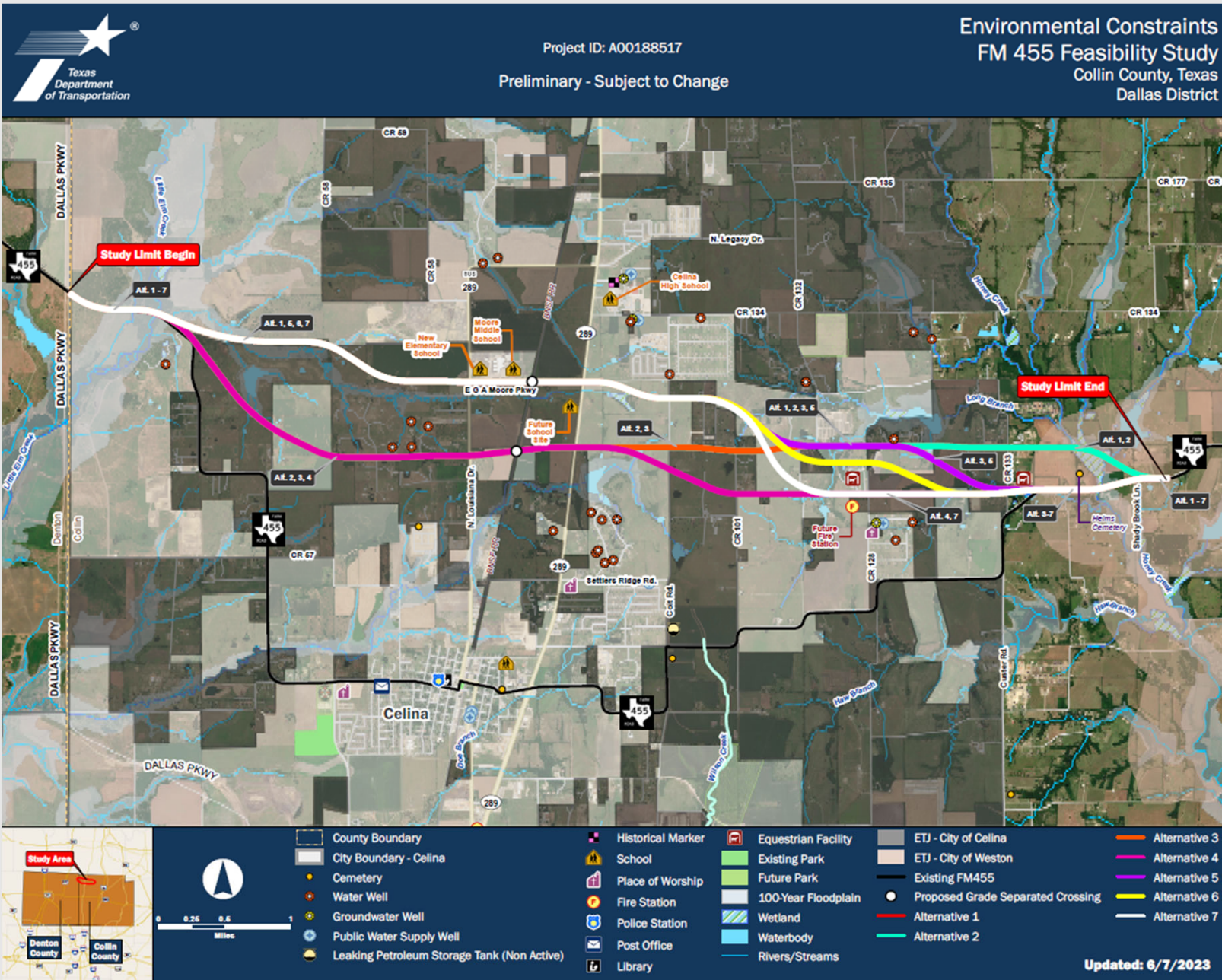
This matrix can be viewed full size on the project website.



***The environmental review, consultation, and other actions required by applicable Federal environmental laws for this project are being, or have been, carried-out by TxDOT pursuant to 23 U.S.C. 327 and a Memorandum of Understanding dated Dec. 9, 2019, and executed by FHWA and TxDOT.***

***La revisión ambiental, consultas y otras acciones requeridas por las leyes ambientales federales aplicables para este proyecto están siendo o han sido, llevado a cabo por TxDOT - en virtud de 23 U.S.C. 327 y un Memorando de Entendimiento fechado el 9 de dic. del 2019, y ejecutado por la FHWA y TxDOT.***

# Environmental Constraints



This map can be viewed full size on the project website.



## Feasibility Study Timeline\*

2022-2023

Preliminary Engineering & Environmental Data Collection

Spring 2023

Explore & Analyze Alternative Solutions

June 20, 2023

Public Meeting #1



WE ARE HERE

Fall 2023

Determine a Recommended Alternative

Spring 2024

Public Meeting #2

## Next Steps after this Feasibility Study



\* Subject To Change



Please submit your comments regarding the design modifications presented in this public meeting by using any of the four methods below by our deadline,  
**Wednesday, July 5, 2023.**



### Comment Online

Click the link provided on the project website.



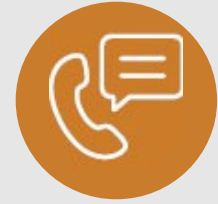
### Email Us

[Stephen.Endres@txdot.gov](mailto:Stephen.Endres@txdot.gov)



### Mail-in Comments

TxDOT Dallas District Office  
Attn: Stephen Endres, P.E.  
4777 E. Highway 80  
Mesquite, TX 75150



### Leave a Voicemail

(469) 920-2505

For general questions about the presentation or the project, please contact TxDOT Project Manager, Stephen Endres, P.E. at [Stephen.Endres@txdot.gov](mailto:Stephen.Endres@txdot.gov).





# Thank you for your interest in the FM 455 Feasibility Study

