

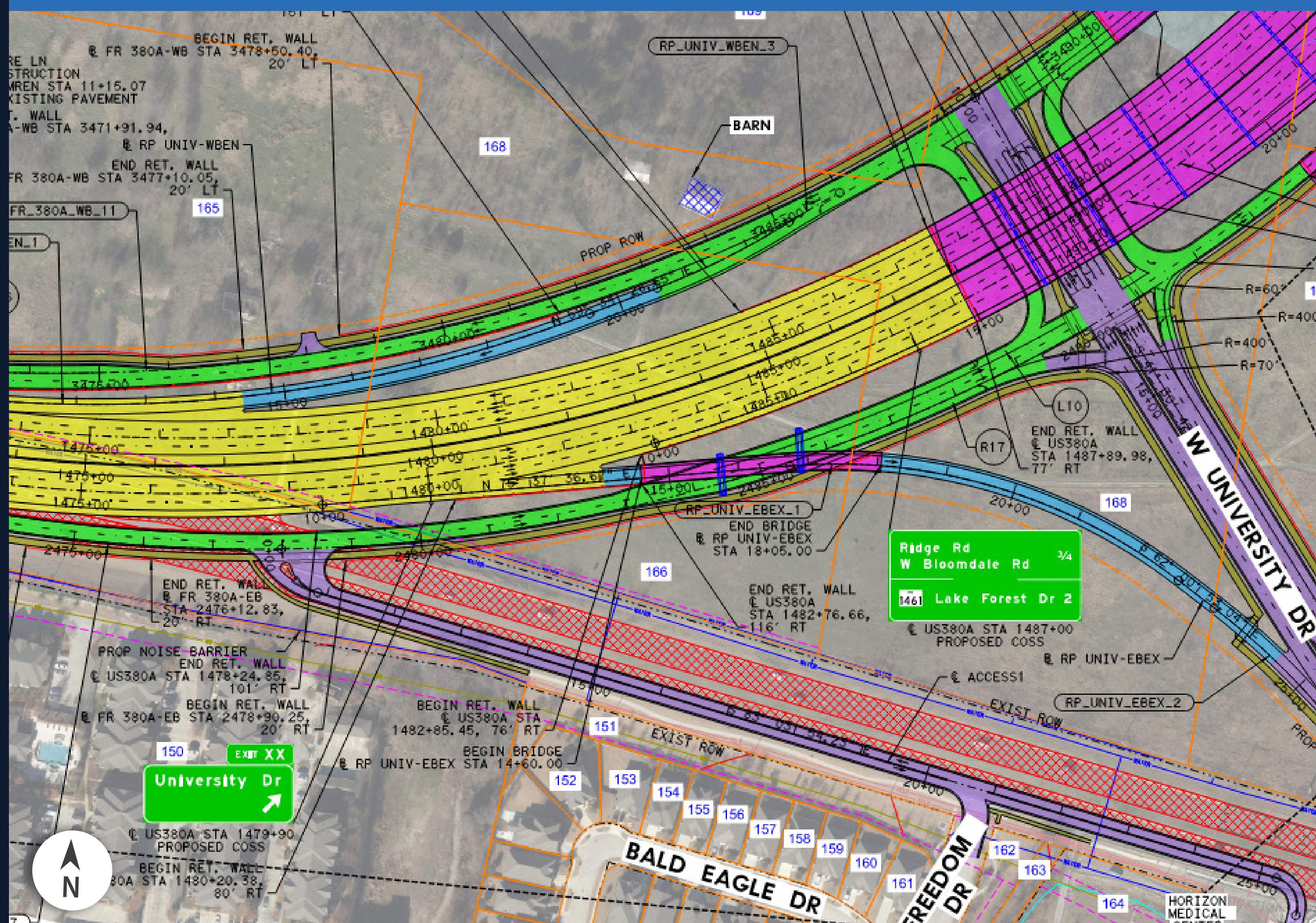


Texas Department of Transportation

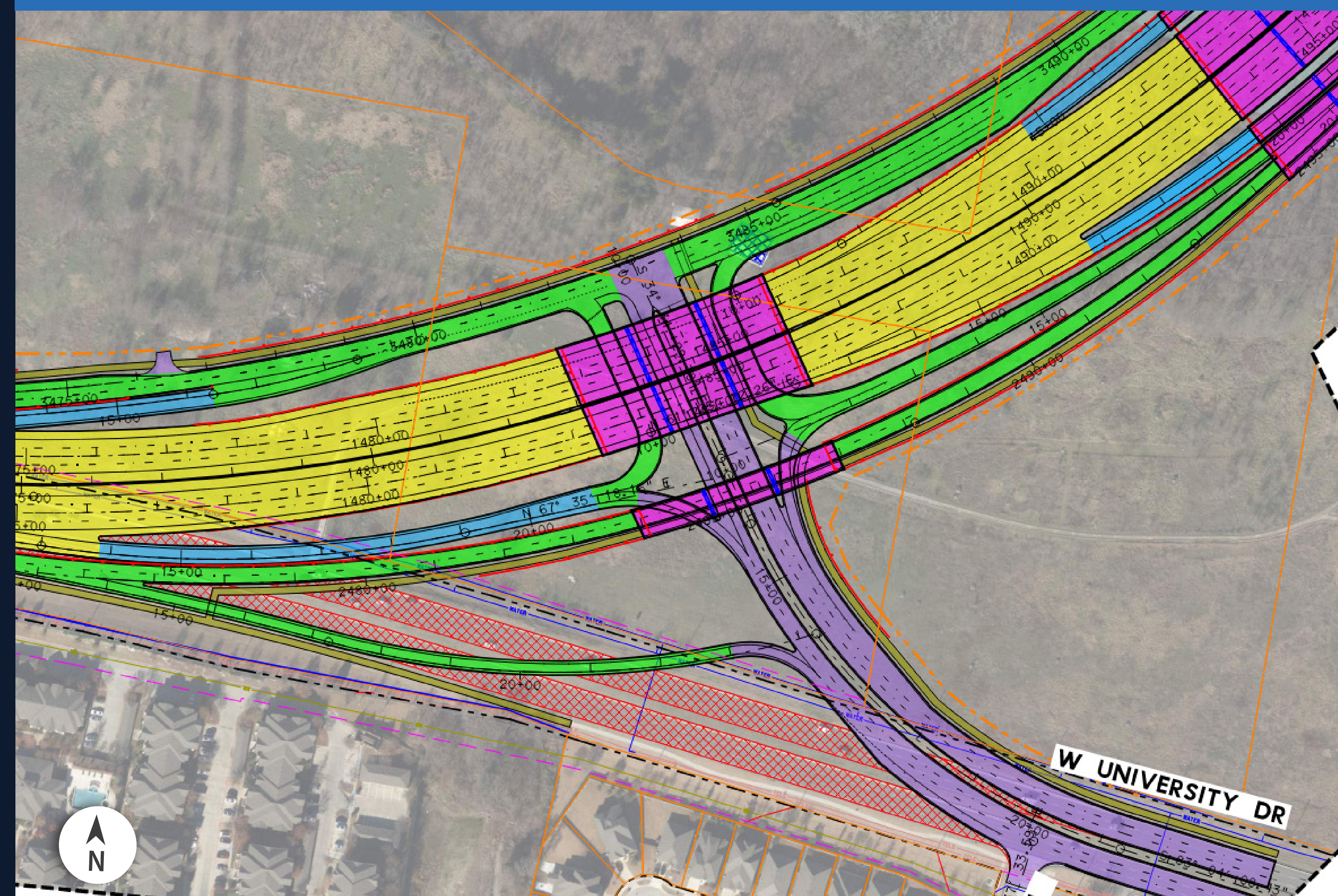
MINOR DESIGN UPDATES UNDER CONSIDERATION FOR FINAL DESIGN

TxDOT is considering design updates to the plans you see on the schematic roll plots. Design updates will be made after this Public Hearing in consideration of public comments received and included in the FEIS. The information below details a change under consideration for the project's final design.

PUBLIC HEARING SCHEMATIC



PROPOSED DESIGN CHANGE



UNIVERSITY DRIVE & FUTURE US 380 INTERCHANGE

The interchange was moved southwest to minimize impacts to future developments.

A westbound entrance ramp from Wilmeth Road was also added.