



# LOOP 9, SEGMENT A PROJECT PARTICIPATING/COOPERATING AGENCY SCOPING MEETING

From: United States 67 (US 67)

To: Interstate 35 East (IH 35E)

Dallas and Ellis Counties, Texas

---

Texas Dept. of Transportation – Dallas District

The Bill Hale Conference Room

4777 E. Highway 80 Mesquite, Texas 75150



# Loop 9 Project Team

## *TXDOT TEAM:*

### **TxDOT Project Delivery Manager:**

**Michelle Lueck**

TxDOT Environmental Affairs Division

118 E Riverside Dr,

Austin, TX 78704

[Michelle.Lueck@TxDOT.gov](mailto:Michelle.Lueck@TxDOT.gov)

### **TxDOT Engineering Project Manager:**

**Matthew Atkinson, PE**

TxDOT Dallas District

4777 E. Highway 80

Mesquite, Texas 75150

[Matthew.Atkinson@TxDOT.gov](mailto:Matthew.Atkinson@TxDOT.gov)

### **TxDOT Environmental Program Manager:**

**Sandra Williams**

TxDOT Dallas District

4777 E. Highway 80

Mesquite, Texas 75150

[Sandra.Williams2@TxDOT.gov](mailto:Sandra.Williams2@TxDOT.gov)

## *CONSULTANT TEAM:*

### **Engineering Consultant: Project Manager**

**Hossein Hosseiny, PE**

BGE, Inc.

2595 Dallas Parkway, Suite 101

Frisco, Texas 75034

[HHosseiny@bgeinc.com](mailto:HHosseiny@bgeinc.com)

### **Environmental Consultant: Project Manager:**

**Sonny Kaiser**

Ecosystem Planning and Restoration (EPR)

17575 North Eldridge Parkway, Building C

Tomball, TX 77377

[SKaiser@eprusa.net](mailto:SKaiser@eprusa.net)

### **Environmental Consultant: Deputy Project Manager:**

**Heather Durden**

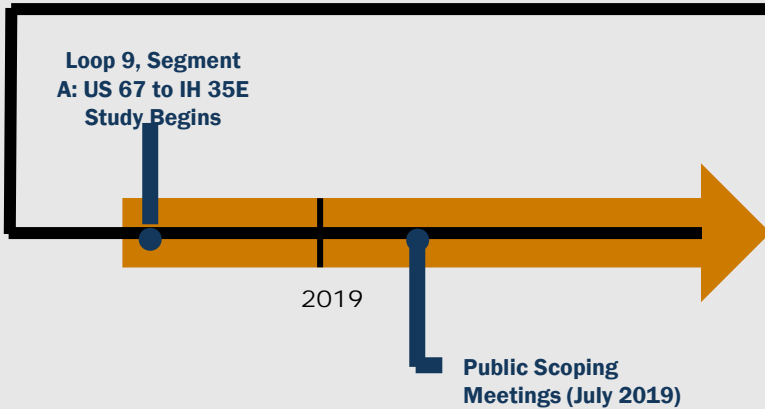
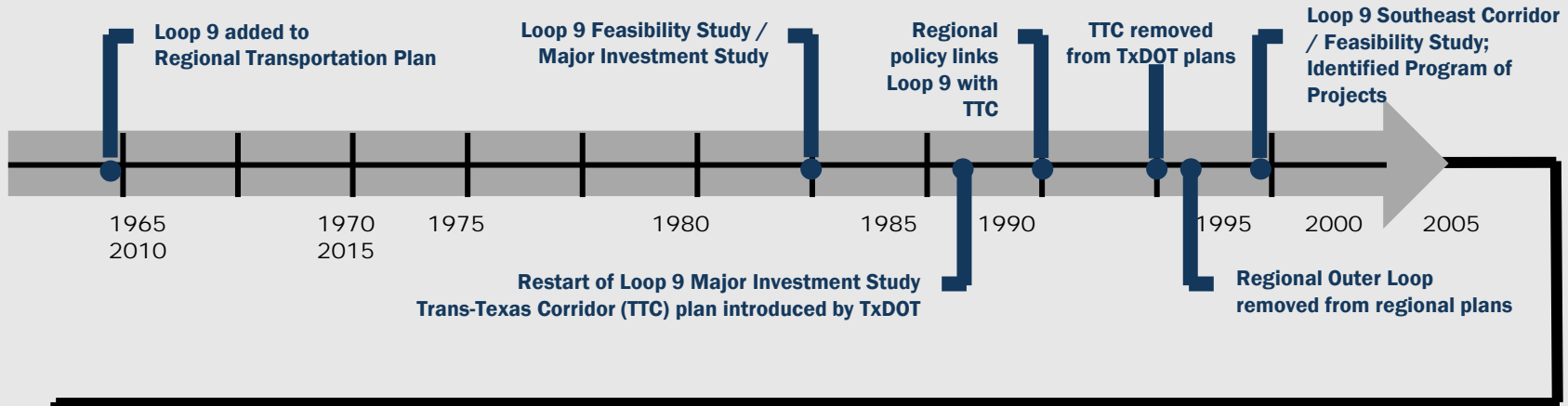
Ecosystem Planning and Restoration (EPR)

17575 North Eldridge Parkway, Building C

Tomball, TX 77377

[HDurden@eprusa.net](mailto:HDurden@eprusa.net)

# Project History Timeline



**Initiating the National Environmental Policy Act Process for the Environmental Impact Statement:**

- ✓ Review and Consider Comments
- ✓ Finalize Purpose and Need Statement
- ✓ Finalize Project Coordination Plan
- ✓ Evaluate Project Alternatives

# Background / Project History

2014 Feasibility Study identified three Loop 9 Segments

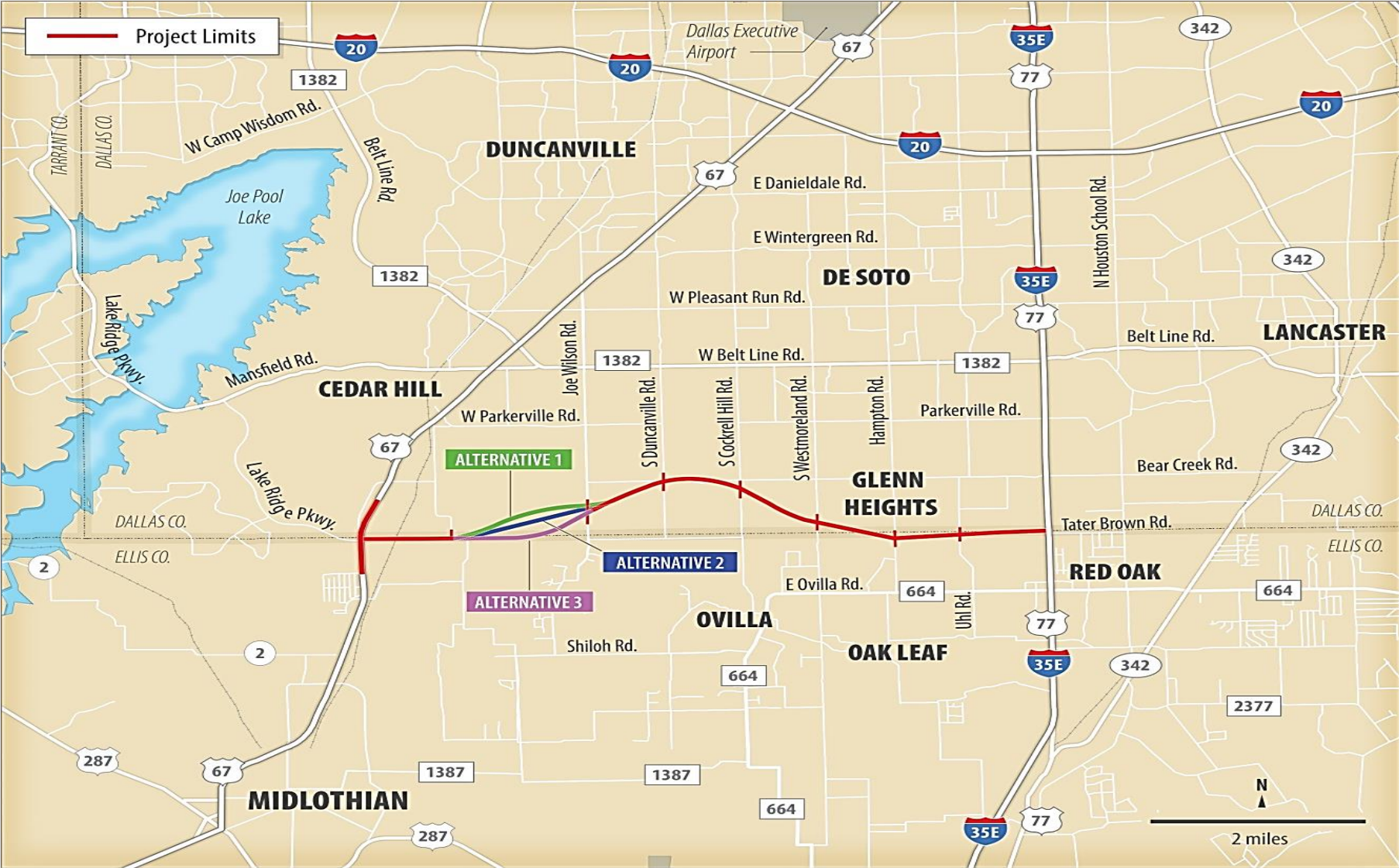


**Segment A:**  
Currently under Schematic /  
Environmental Study

**Segment B:**  
Based on transportation needs, this corridor  
was studied first and has been completed.  
Estimated Construction Start: **TBD**

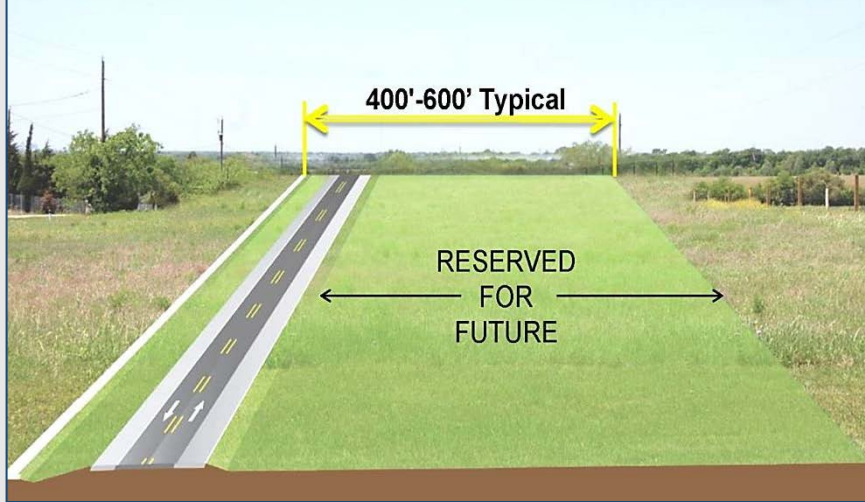
**Segment C:**  
Future Study

# Proposed Project

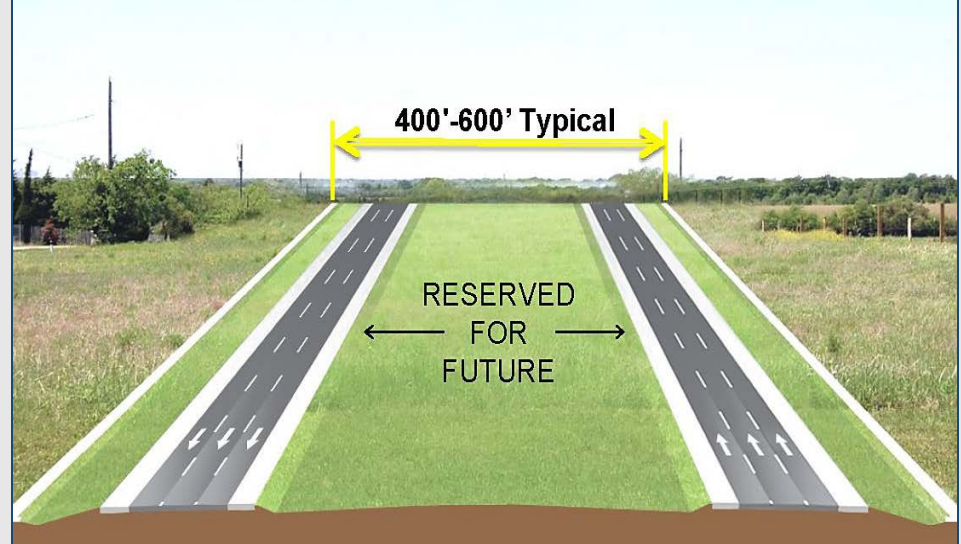


# Proposed Phased Construction of the Frontage Roads

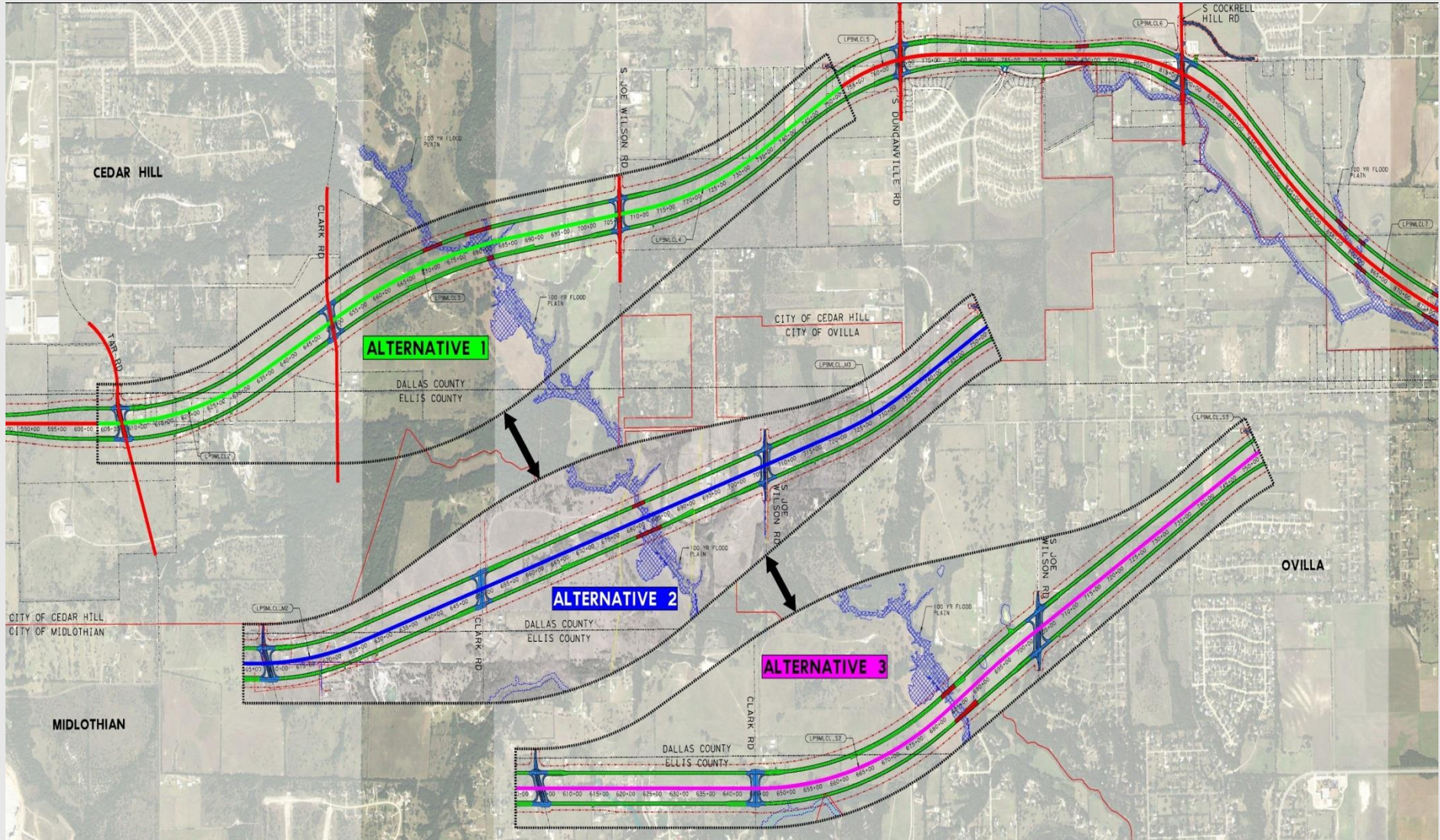
## Phase 1 Construction: Two-Way Access Road



## Potential Phased Construction Option: One-Way Access Roads



# Conceptual Alternatives Developed to Date



# Where are We in the EIS Process?

Basic steps in the ENVIRONMENTAL IMPACT STATEMENT (EIS) process:

**WE ARE HERE**

## Notice of Intent to Prepare EIS



TxDOT begins the scoping process for an EIS by publishing a Notice of Intent (NOI) in the Federal Register to let the public know that it is considering an action and will prepare an EIS.

## Scoping Process



**Scoping:** A public process to help define the purpose and need for the proposed action or project and to identify environmental issues that need to be studied.

## Draft EIS

- Data Collection
- Development of Alternatives
- Analysis of Alternatives
- Preparation of a Draft DEIS



- **Data Collection:** Collecting transportation, environmental and land use data. This step will also include developing a tool for predicting future (year 2045) travel.
- **Development of Alternatives:** Identifying a variable range of highway alternatives, and then narrowing these to the reasonable range of alternatives for detailed study. This will include a "No-Action" Alternative.
- **Analysis of Alternatives:** Transportation, social, economic and environmental impacts of a reasonable range of alternatives is studied in detail and comparisons are made.
- **Preparation of a Draft Environmental Impact Statement (DEIS):** A printed report for public review and comment is prepared documenting the need for the project, describing alternative courses of action, analyzing likely impacts from each alternative, and describing any steps to be taken to avoid impacts or minimize harm to the environment.

## Public Comments on Draft EIS

(Opportunities for Public Participation)



Public and Agency Review of the DEIS.

## Notice of Availability of Final EIS And Record of Decision/Combined



Preparation of a Final Environmental Impact Statement (FEIS) and Record of Decision (ROD) combined:


- **Preparation of a FEIS -** Documents preferred alternative and provides response to comments that were made on the DEIS.
- **ROD -** Documents the decision and commits to mitigation of impacts by the lead federal agency.



# Purpose of the Participating/Coordinating Agency Scoping Meeting

The purpose of this meeting is to provide you (the Participating/Coordinating Agencies) an opportunity to review and comment on:


- the Draft Project Coordination Plan;
- the Draft Project Purpose and Need Statement; and,
- the range of alternatives developed to date to be considered and evaluated during the Environmental Impact Statement (EIS) Process.



**Purpose and Need Statement**  
Loop 9, Segment A

From United States 67 (US 67) to Interstate 35 East (IH 35E)  
Control-Section Job (CSJ) Number(s): 2964-10-006; 0261-01-041  
Dallas and Ellis Counties, Texas  
April 2019

The environmental review, consultation, and other actions required by applicable Federal environmental laws for this project are being, or have been, carried out by TxDOT pursuant to 23 U.S.C. 327 and a Memorandum of Understanding dated December 16, 2014, and executed by FHWA and TxDOT.



**Draft**  
**Project Coordination Plan**  
Loop 9 – Segment A,  
Dallas District

From US 67 to IH 35E  
CSJs: 2964-10-006 & 0261-01-041  
Dallas and Ellis Counties, Texas  
June 2019

The environmental review, consultation, and other actions required by applicable Federal environmental laws for this project are being, or have been, carried out by TxDOT pursuant to 23 U.S.C. 327 and a Memorandum of Understanding dated December 16, 2014, and executed by FHWA and TxDOT.

TABLE  
SUMMARY OF IMPACTS BY ALTERNATIVE ALIGNMENT AND REACH FOR LOOP 9, SEGMENT A

Alternative Alignment	Length (mile)	Land Use		Visual and Potential Access Impacts	Separation of Farmland from Nonuse	Changes in Community Cohesion	Environmental Justice (EJ) Issues	Air Quality Impacts	Traffic, Noise Impacts	Residence Displacements	Commercial Displacements	School Properties	Churches	Cemeteries	Parks	Threatened and Endangered Species	Species of Concern	Natural Resource							Cultural Resource				Water							
		Special Resource Areas	Aquatic Resource															Flood Zones	Recorded Archeology Sites	Historic Properties	Century Farm Sites	High Probability Areas (acre)	Replanning Crossings	Potential Hazardous Materials Sites	Public <sup>1</sup>	Private <sup>2</sup>										
1	9.60	Yes/N <sup>o</sup>	Yes/N <sup>o</sup>	Yes/N <sup>o</sup>	Yes/N <sup>o</sup>	Yes/N <sup>o</sup>	Under Evaluation	64	5	-	-	-	-	-	-	No	Yes	0.0	14.7	1.93	0.31	2.23	24	28.5	7.91	183.8	203.5	0	0	0	0	4	4	1	1	
2	9.58	Yes/N <sup>o</sup>	Yes/N <sup>o</sup>	Yes/N <sup>o</sup>	Yes/N <sup>o</sup>	Yes/N <sup>o</sup>	Under Evaluation	64	5	-	-	-	-	-	-	No	Yes	0.0	21.7	2.0	0.31	2.31	23	25.12	5.41	264.4	201.4	0	0	0	0	4	4	1	1	
3	9.66	Yes/N <sup>o</sup>	Yes/N <sup>o</sup>	Yes/N <sup>o</sup>	Yes/N <sup>o</sup>	Yes/N <sup>o</sup>	Under Evaluation	71	4	-	-	-	-	-	-	No	Yes	0.0	15.0	1.93	1.42	3.35	21	31.27	5.41	187.3	201.2	0	0	0	0	4	4	1	1	
Preferred																																				
Selected																																				

<sup>1</sup> data derived from hazards.fema.gov GIS online server <sup>2</sup> data derived from hazards.fema.gov GIS online server <sup>3</sup> Yes/No-these categories are under evaluation

# Next Steps and Timeline


- **Finalize Purpose and Need** (Summer 2019)
- **Prepare Draft EIS** (Winter 2019 – Summer 2020)
- **Circulate Draft EIS** (Agency / Public Review) (Summer 2020)
- **Conduct Public Hearings** on DEIS (Summer 2020)
- **Select Preferred Alternative** (Summer 2020)
- **Prepare and Circulate a Combined Final EIS / Record of Decision** (Fall 2020 – Summer 2021)
- **Final Environmental Clearance** (anticipated late 2021 – early 2022)

# 30-Day Comment Period

The materials listed above were emailed to you for review and comments on August 1, 2019, beginning the 30-day comment period. August 30, 2019 will be the last date to receive comments.

Comments will be accepted in writing and may be submitted by mail to: **Sandra Williams, TxDOT Dallas District Office, 4777 E. Highway 80, Mesquite, Texas, 75150**, or by email addressed to [sandra.williams2@txdot.gov](mailto:sandra.williams2@txdot.gov).


**ALL MAILED WRITTEN COMMENTS TO BE CONSIDERED MUST BE SUBMITTED OR POSTMARKED BY FRIDAY, AUGUST 30, 2019.**



**Purpose and Need Statement**  
Loop 9, Segment A

From United States 67 (US 67) to Interstate 35 East (IH 35E)  
Control-Section Job (CSJ) Number(s): 2964-10-006; 0261-01-041  
Dallas and Ellis Counties, Texas  
April 2019

The environmental review, consultation, and other actions required by applicable Federal environmental laws for this project are being, or have been, carried out by TxDOT pursuant to 23 U.S.C. 327 and a Memorandum of Understanding dated December 16, 2014, and executed by FHWA and TxDOT.



**Draft**  
**Project Coordination Plan**  
Loop 9 – Segment A,  
Dallas District

From US 67 to IH 35E  
CSJs: 2964-10-006 & 0261-01-041  
Dallas and Ellis Counties, Texas  
June 2019

The environmental review, consultation, and other actions required by applicable Federal environmental laws for this project are being, or have been, carried out by TxDOT pursuant to 23 U.S.C. 327 and a Memorandum of Understanding dated December 16, 2014, and executed by FHWA and TxDOT.

TABLE  
SUMMARY OF IMPACTS BY ALTERNATIVE ALIGNMENT AND REACH FOR LOOP 9, SEGMENT A

Alternative Alignment	Length (miles)	Land Use										Natural Resource										Cultural Resource				Water						
		Visual and Potential Access Impacts	Separation of Farmland from Homesite	Changes in Community Cohesion	Environmental Justice (EJ) Issues	All Quality Impacts	Traffic, Noise Impacts	Residence Displacements	Commercial Displacements	School Properties	Churches	Cemeteries	Parks	Threatened and Endangered Species	Species of Concern	Saturated Hardwood (acres)	Riparian Forest (acres)	Adjacent Wetlands (acres)	Isolated Wetlands (acres)	Full Wetlands (acres)	Stream Crossings	100-Year Floodplain (acres) <sup>1</sup>	Floodway (acres) <sup>1</sup>	Prime Farmland (acres)	Statewide Important Farmland Soils	Recorded Archeology Sites	Historic Properties	Century Farm Sites	High Probability Areas (acres)	Riparian Crossings	Potential Hazardous Materials Sites	Public <sup>2</sup>
1	9.60	Yes/N o	Yes/N o	Yes/N o	Yes/N o	Under Evalu- ation	64	5	-	-	-	-	No	Yes	0.0	14.7	1.93	0.31	2.23	24	28.5	7.91	183.8	203.5	0	0	0	0	4	4	1	1
2	9.58	Yes/N o	Yes/N o	Yes/N o	Yes/N o	Under Evalu- ation	64	5	-	-	-	-	No	Yes	0.0	21.7	2.0	0.31	2.31	23	25.12	5.41	264.4	201.4	0	0	0	0	4	4	1	1
3	9.66	Yes/N o	Yes/N o	Yes/N o	Yes/N o	Under Evalu- ation	71	4	-	-	-	-	No	Yes	0.0	15.0	1.93	1.42	3.35	21	31.27	5.41	187.3	201.2	0	0	0	0	4	4	1	1
Preferred																																
Selected																																

<sup>1</sup> data derived from hazards.fema.gov GIS online server <sup>2</sup> data derived from hazards.fema.gov GIS online server <sup>3</sup> Yes/No-these categories are under evaluation