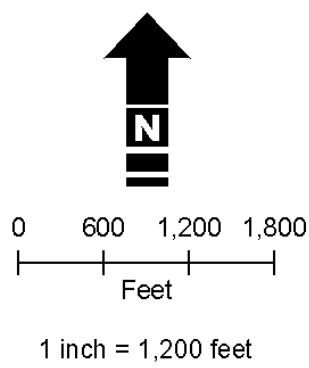
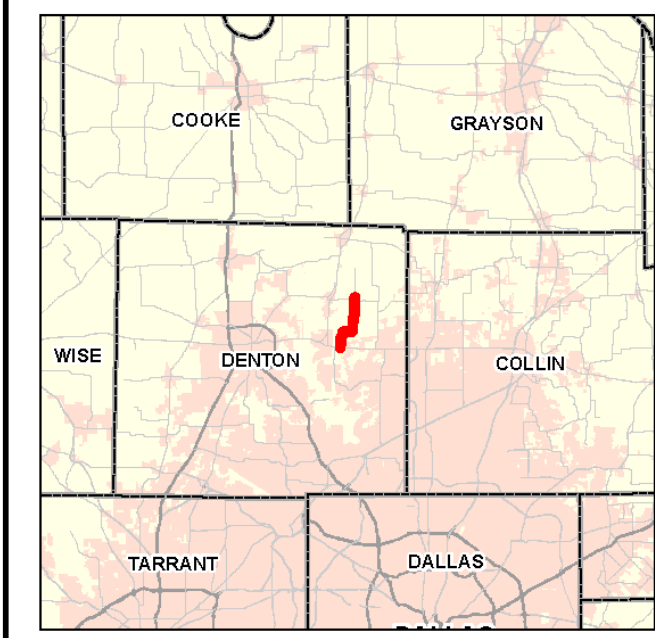
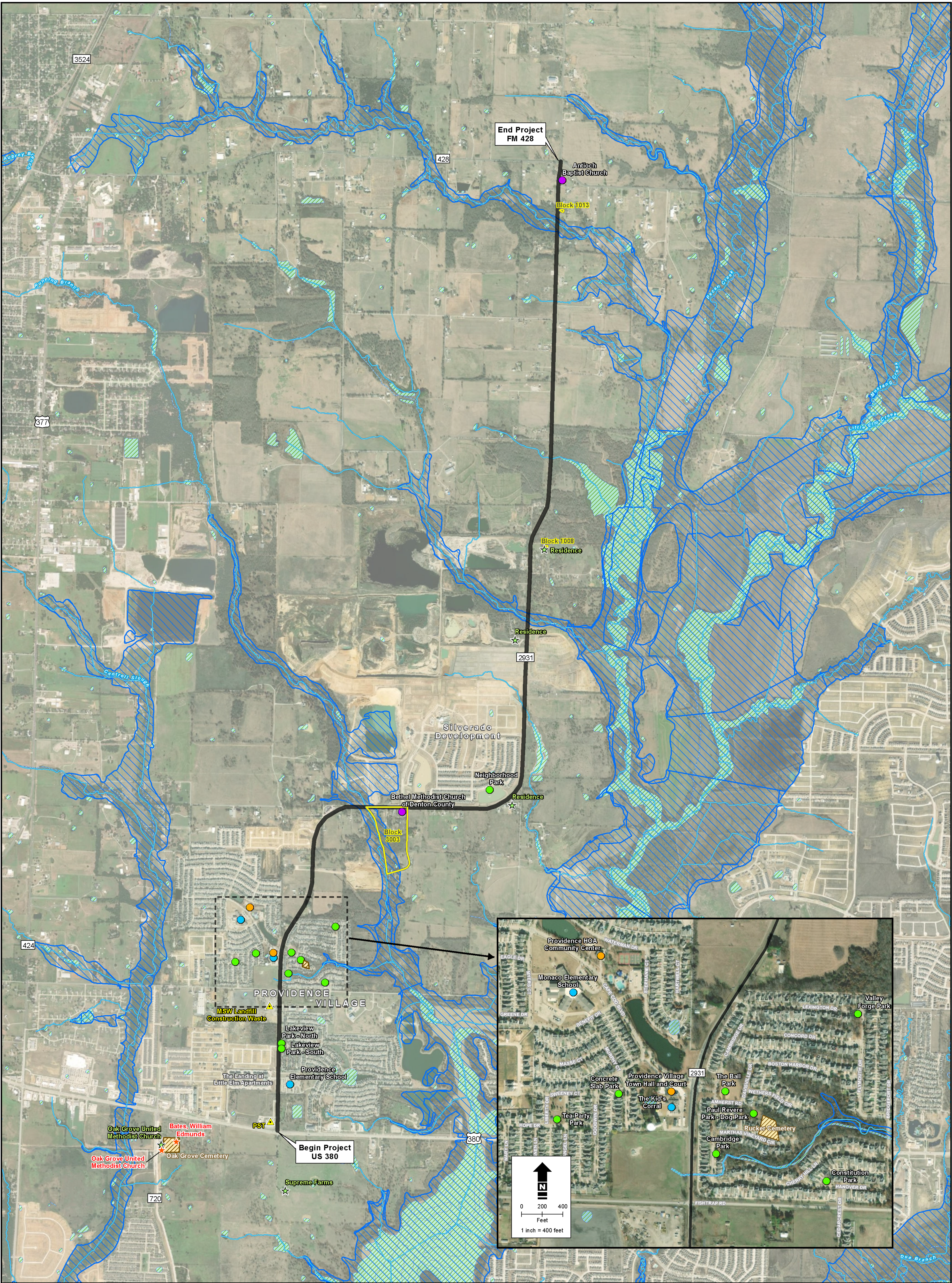


Environmental Constraints Map



Environmental Constraints

FM 2931 from US 380 to FM 428
Denton County, Texas
CSJ: 2979-01-011

Key to Features

- Project Limits
- Streams (NHD)
- Floodplains (FEMA)
- Wetlands (NWI)
- Census Blocks with 50% or more Minority Population
- Cemeteries
- Potential Historic Properties
- Official Texas Historical Marker
- Hazardous Materials Sites
- Land Use Types
 - Community Facilities
 - Parks
 - Place of Worship
 - Schools