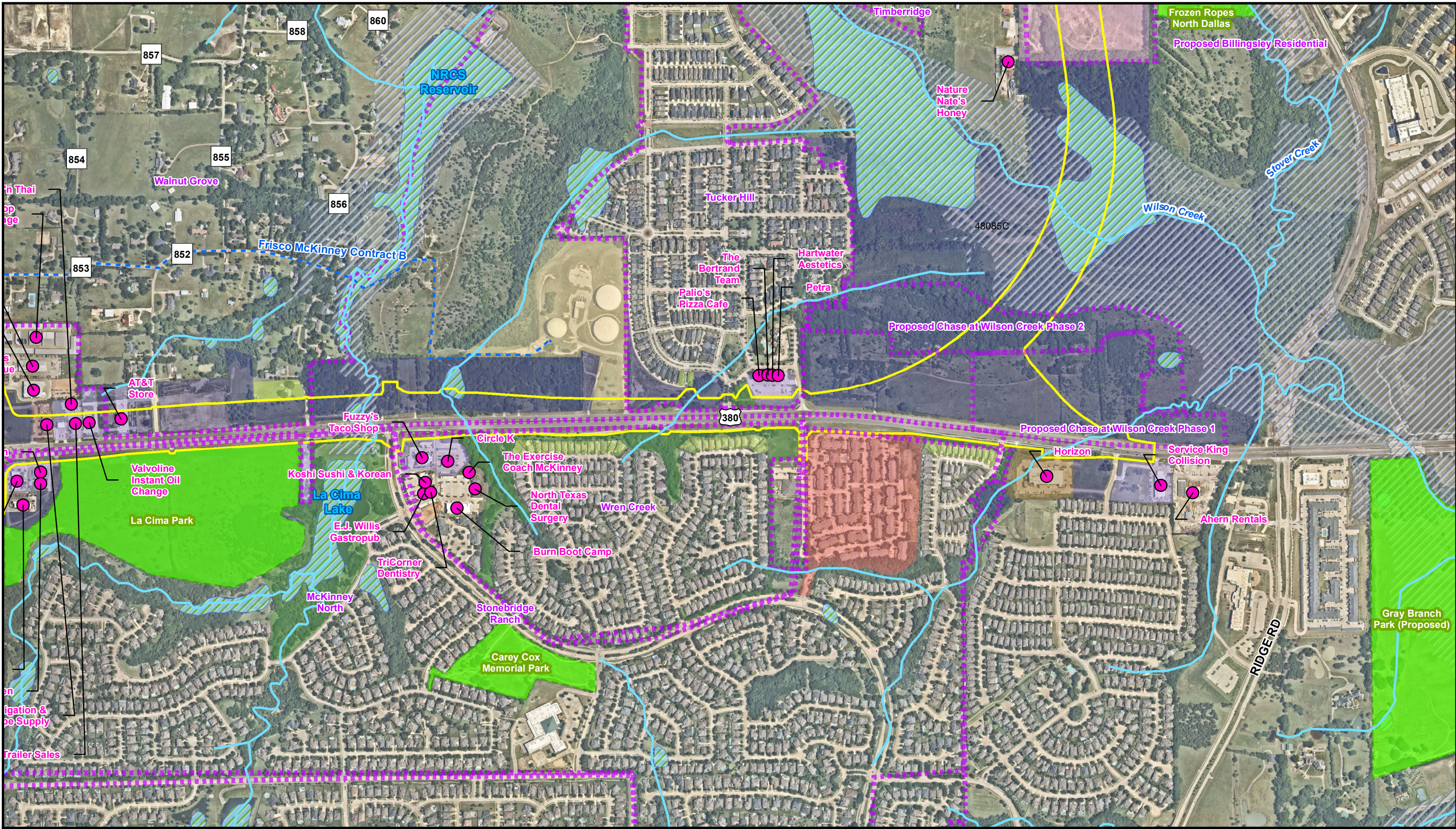


APPENDIX D: Resource-Specific Maps and Displacement Maps By Segment

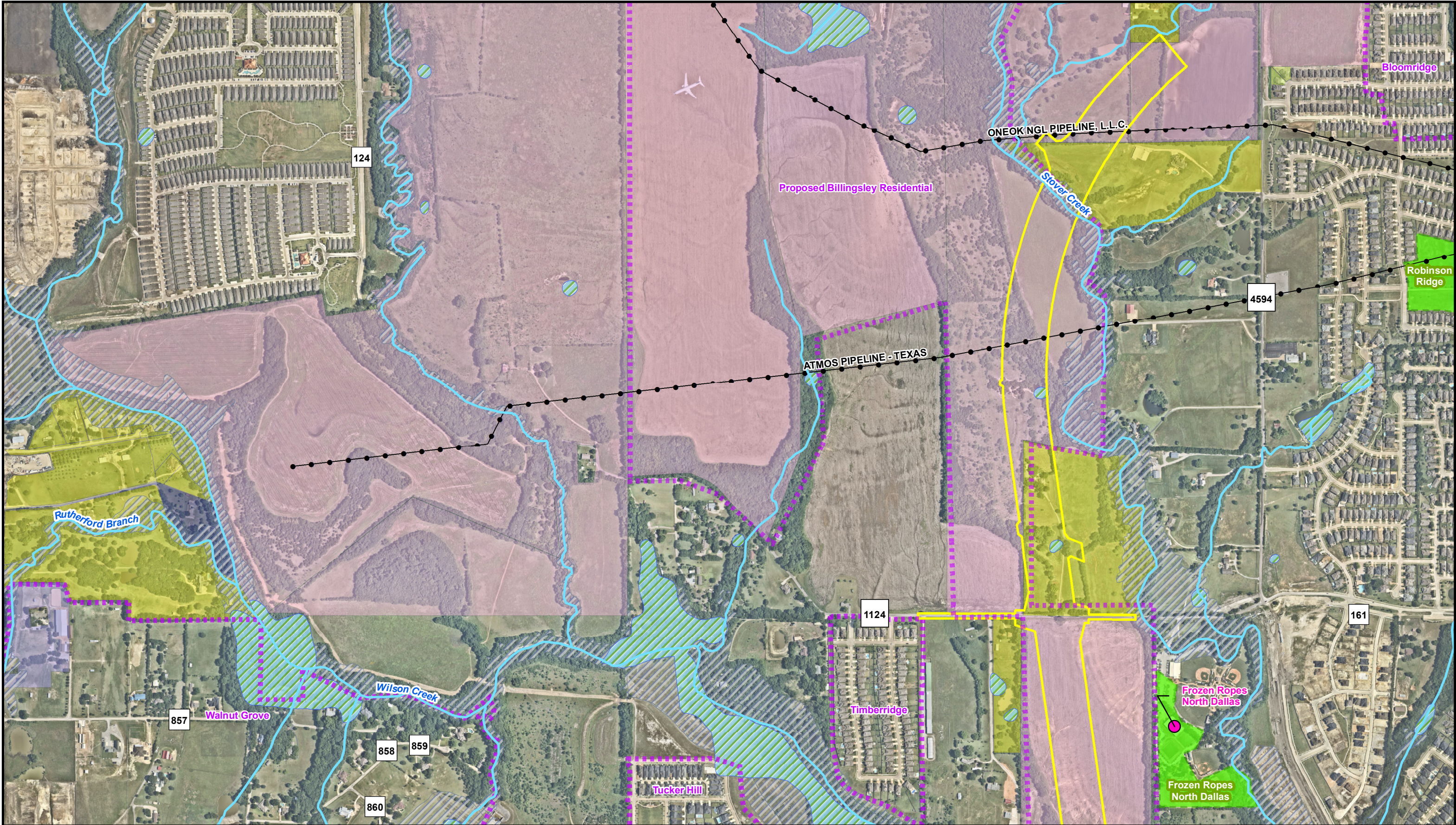


Path: C:\Users\sspurgeon\OneDrive - Burns & McDonnell\Desktop\Projects\US 380\MapDocs\US 380 DEIS\Resource_Specific_SegA.mxd
Service Layer Credits: Esri, HERE, Garmin, (c) OpenStreetMap contributors, and the GIS user community



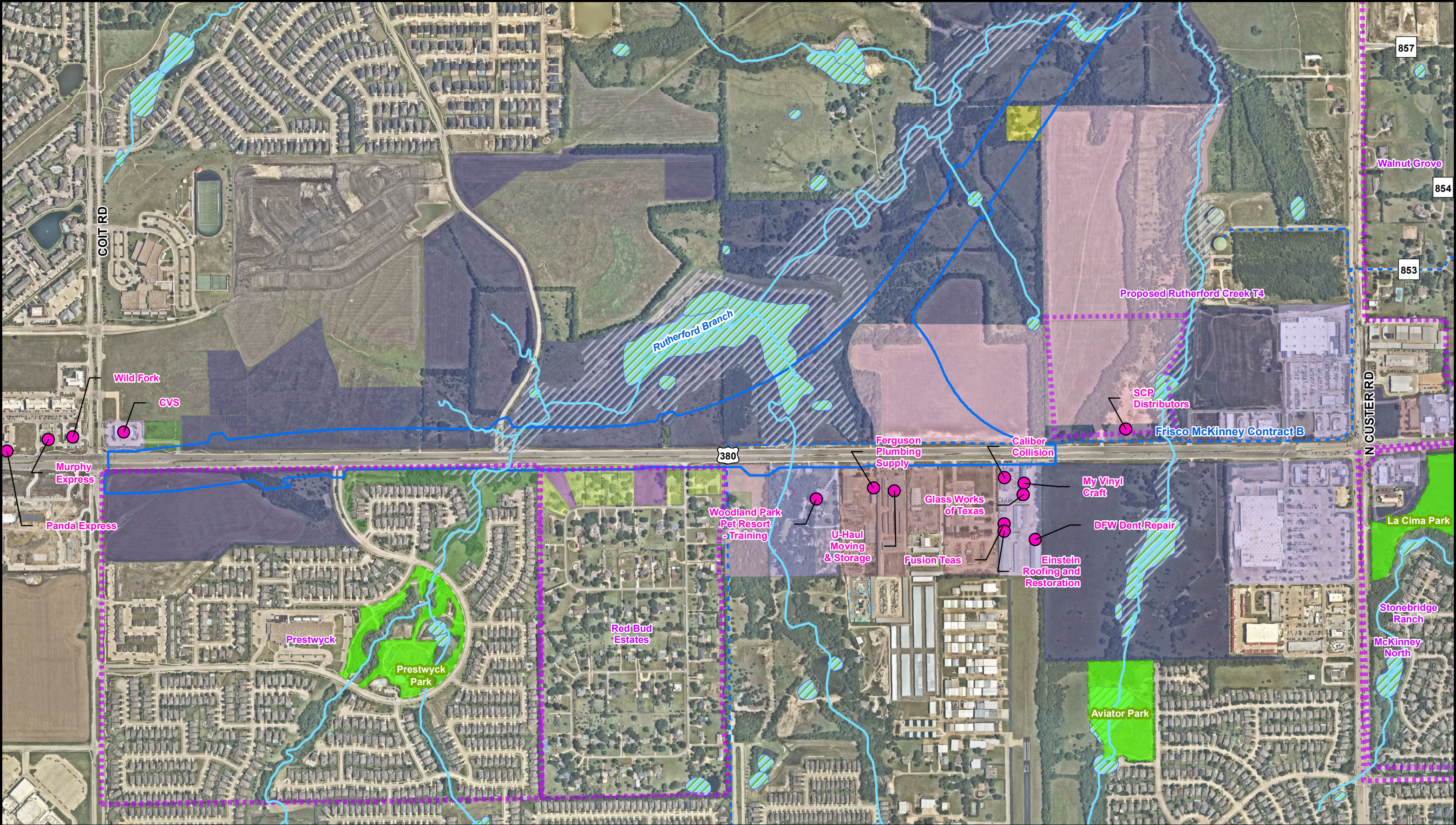
<ul style="list-style-type: none">Segment A Proposed ROW (Purple/Blue Alternatives)AgricultureCommercialIndustrialInstitutional	<ul style="list-style-type: none">Private Open SpaceResidential - MultifamilyResidential - Single-FamilyUndeveloped/VacantUtility/InfrastructureDevelopmentsParkland	<ul style="list-style-type: none">Wetlands (NWI)FEMA Floodway and FloodplainsMajor WaterlinesBusinesses				<p>Resource Specific Map Segment A (Purple/Blue Alternatives) US 380 McKinney Coit Road to FM 1827 Collin County, TX Map 2 of 3</p>
---	--	--	--	--	--	---

Path: C:\Users\sspurgeon\OneDrive - Burns & McDonnell\Desktop\Projects\US 380\DataFiles\ArcDocs\US 380 DEIS\Resource_Specific_SegA.mxd spurgeon 10/20/2022
Service Layer Credits: Esri, HERE, Garmin, (c) OpenStreetMap contributors, and the GIS user community



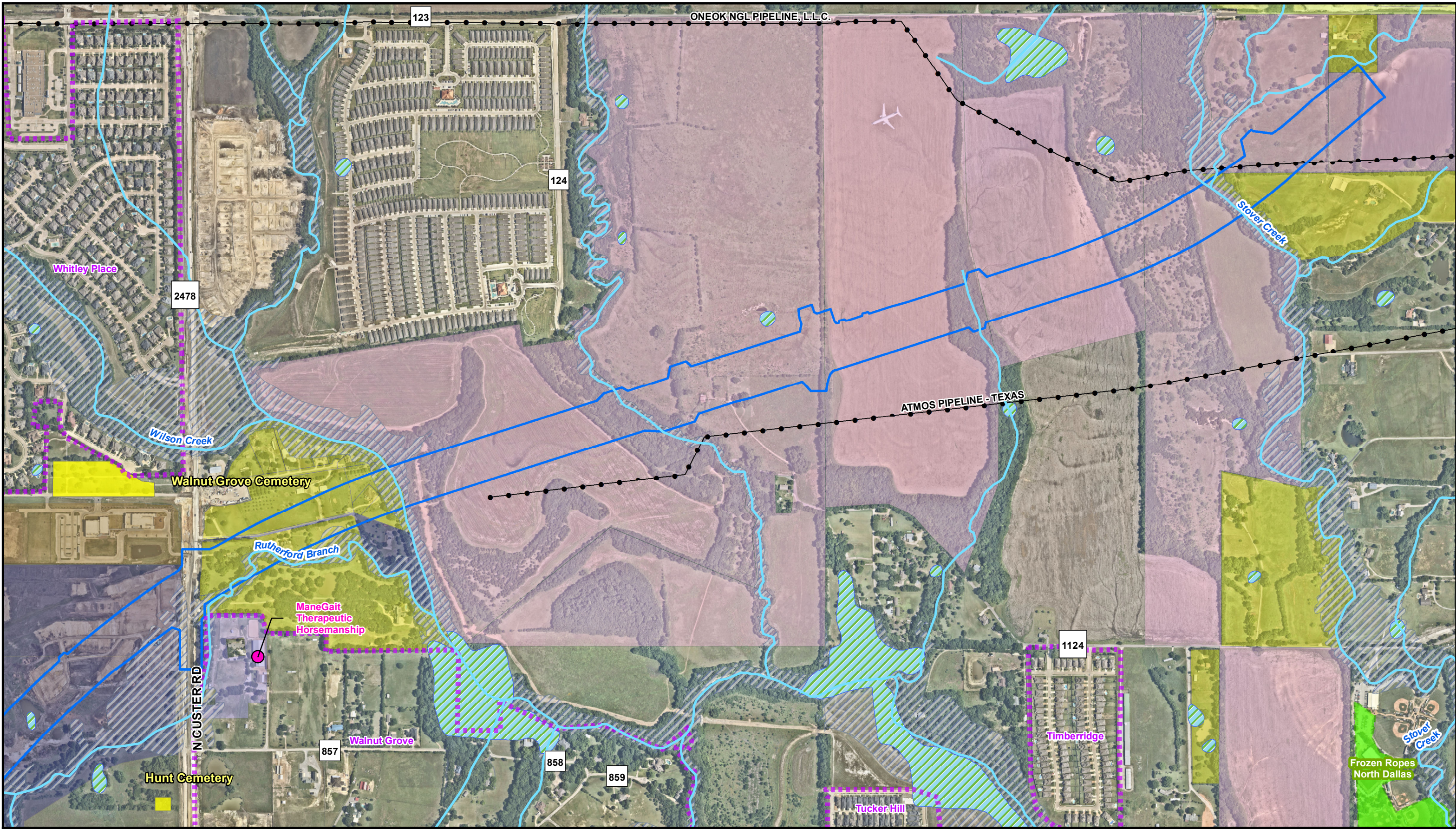
<ul style="list-style-type: none">Segment A Proposed ROW (Purple/Blue Alternatives)AgricultureCommercialPrivate Open Space	<ul style="list-style-type: none">Residential - Rural Single-FamilyResidential - Single-FamilyUndeveloped/VacantDevelopmentsParkland	<ul style="list-style-type: none">Wetlands (NWI)FEMA Floodway and FloodplainsPipelinesBusinesses				<p>Resource Specific Map Segment A (Purple/Blue Alternatives) US 380 McKinney Coit Road to FM 1827 Collin County, TX Map 3 of 3</p>
---	--	---	--	--	--	---

Path: C:\Users\sspurgeon\OneDrive - Burns & McDonnell\Desktop\Projects\US 380\MapDocs\US 380 DEIS\Resource_Specific_SegB.mxd sspurgeon 10/20/2022
Service Layer Credits: Esri, HERE, Garmin, (c) OpenStreetMap contributors, and the GIS user community



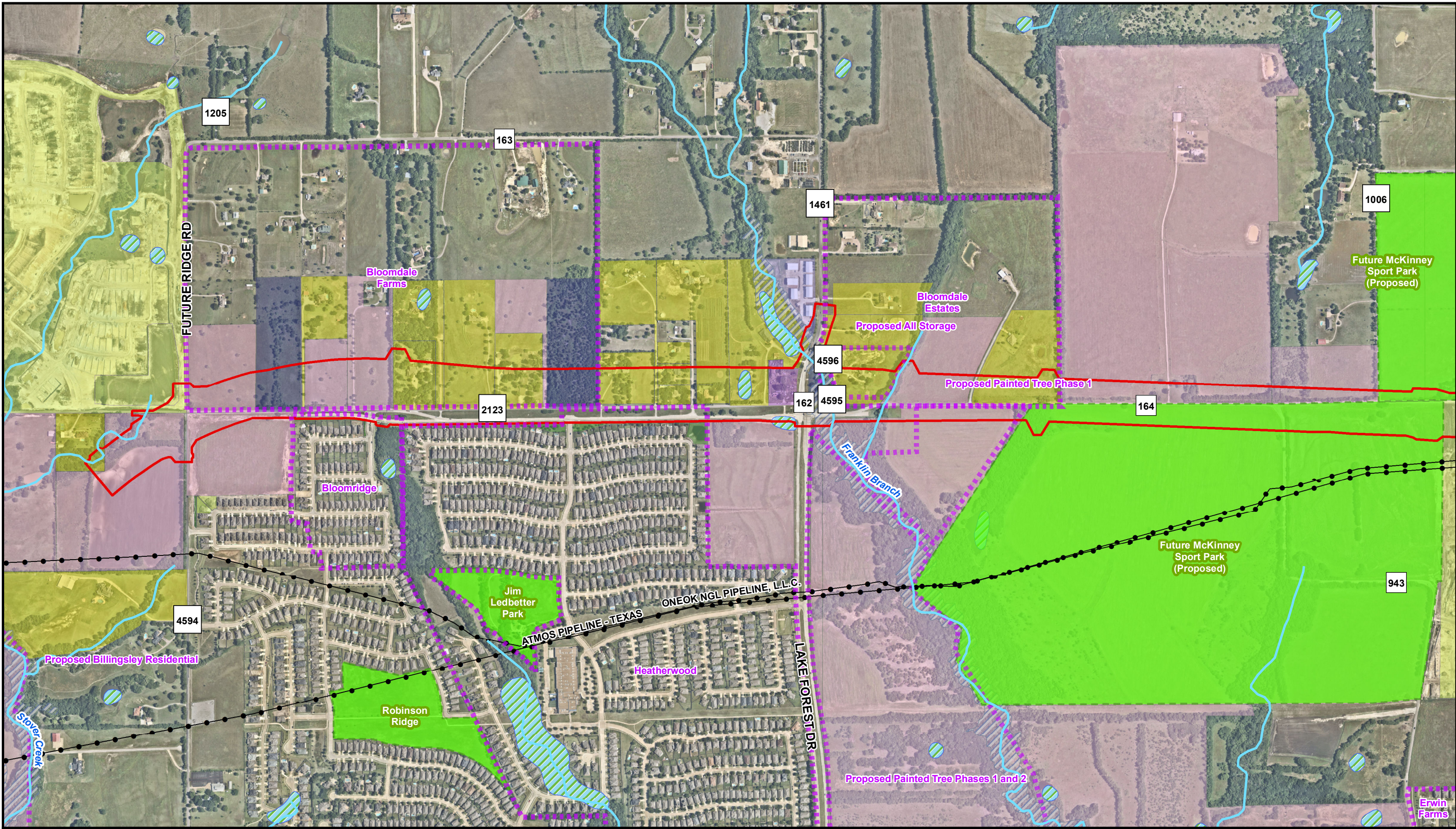
<ul style="list-style-type: none">Proposed ROW (Brown/Gold Alternatives)DevelopmentsAgricultureCommercialIndustrial	<ul style="list-style-type: none">Private Open SpaceResidential - Rural Single-FamilyResidential - Single-FamilyResidential - VacantUndeveloped/VacantParkland	<ul style="list-style-type: none">Wetlands (NWI)FEMA Floodway and FloodplainsMajor WaterlinesBusinesses				<p>Resource Specific Map Segment B (Brown/Gold Alternatives) US 380 McKinney Coit Road to FM 1827 Collin County, TX Map 1 of 2</p>
---	---	--	--	--	--	--

Path: C:\Users\sspurgeon\OneDrive - Burns & McDonnell\Desktop\Projects\US 380\DataFiles\ArcDocs\US 380 DEIS\Resource_Specific_SegB.mxd sspurgeon 10/20/2022
Service Layer Credits: Esri, HERE, Garmin, (c) OpenStreetMap contributors, and the GIS user community



<ul style="list-style-type: none">Proposed ROW (Brown/Gold Alternatives)DevelopmentsAgricultureCommercial	<ul style="list-style-type: none">InstitutionalResidential - Rural Single-FamilyResidential - Single-FamilyUndeveloped/VacantCemeteriesParkland	<ul style="list-style-type: none">Wetlands (NWI)FEMA Floodway and FloodplainsPipelinesBusinesses				<p>Resource Specific Map Segment B (Brown/Gold Alternatives) US 380 McKinney Coit Road to FM 1827 Collin County, TX Map 2 of 2</p>
--	--	---	--	--	--	--

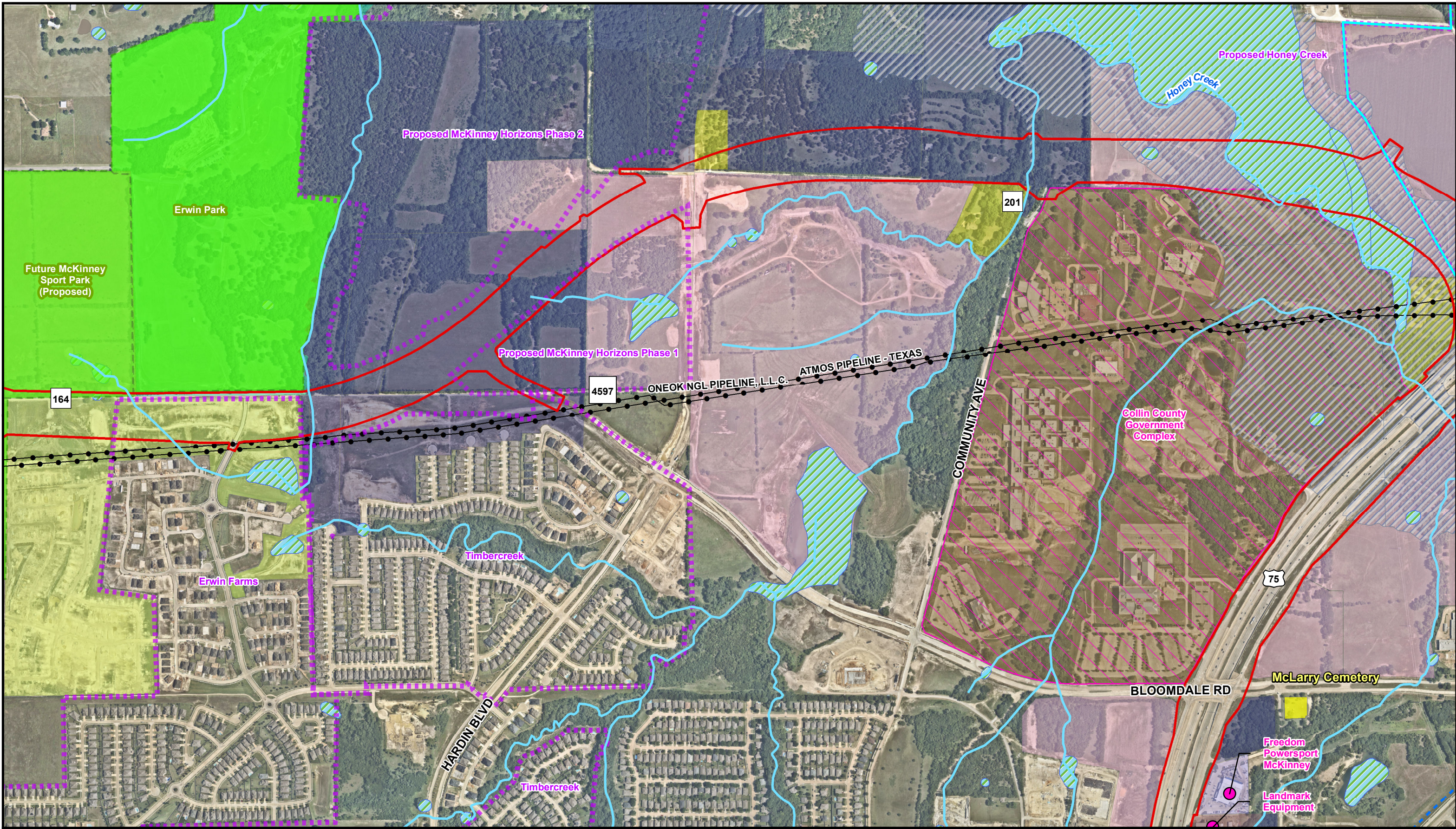
Path: C:\Users\sspurgeon\OneDrive - Burns & McDonnell\Desktop\Projects\US 380\MapDocs\US 380 DEIS\Resource_Specific_SegE.mxd sspurgeon 10/20/2022
Service Layer Credits: Esri, HERE, Garmin, (c) OpenStreetMap contributors, and the GIS user community



<ul style="list-style-type: none">Segment E Proposed ROW (All Alternatives)DevelopmentsAgricultureCommercialPrivate Open Space	<ul style="list-style-type: none">Residential - Rural Single-FamilyResidential - Single-FamilyResidential - VacantUndeveloped/Vacant	<ul style="list-style-type: none">Wetlands (NWI)FEMA Floodway and FloodplainsParklandPipelines
--	---	---

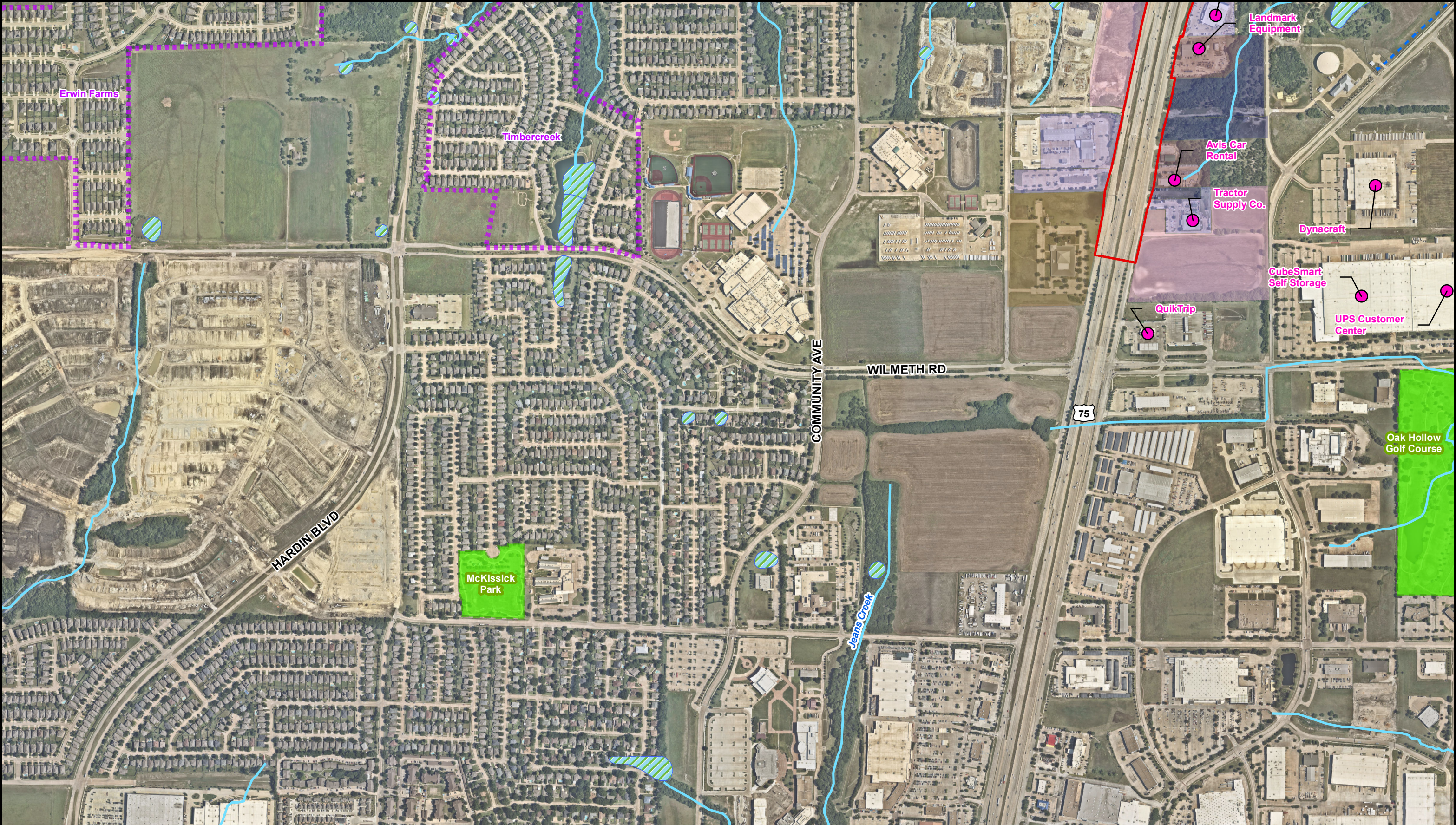
Resource Specific Map
Segment E (All Alternatives)
US 380 McKinney
Coit Road to FM 1827
Collin County, TX
Map 1 of 5

Path: C:\Users\sspurgeon\OneDrive - Burns & McDonnell\Desktop\Projects\US 380\MapDocs\US 380 DEIS\Resource_Specific_SegE.mxd sspurgeon 10/20/2022
Service Layer Credits: Esri, HERE, Garmin, (c) OpenStreetMap contributors, and the GIS user community



<ul style="list-style-type: none">Segment E Proposed ROW (All Alternatives)DevelopmentsCollin County Government ComplexAgricultureCommercialIndustrial	<ul style="list-style-type: none">InstitutionalOther Park Lands and Open SpaceResidential - Rural Single-FamilyResidential - Single-FamilyUndeveloped/VacantCemeteries	<ul style="list-style-type: none">Wetlands (NWI)FEMA Floodway and FloodplainsParklandPipelinesMajor WaterlinesBusinesses				<p>Resource Specific Map Segment E (All Alternatives) US 380 McKinney Coit Road to FM 1827 Collin County, TX Map 2 of 5</p>
---	---	---	--	--	--	---

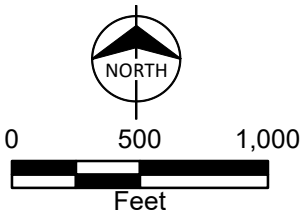
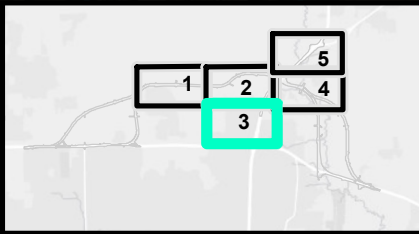
Path: C:\Users\sspurgeon\OneDrive - Burns & McDonnell\Desktop\Projects\US 380\DataFiles\ArcDocs\US 380 DEIS\Resource_Specific_SegE.mxd sspurgeon 10/20/2022
Service Layer Credits: Esri, HERE, Garmin, (c) OpenStreetMap contributors, and the GIS user community



- Segment E Proposed ROW (All Alternatives)
- Developments
- Agriculture
- Commercial

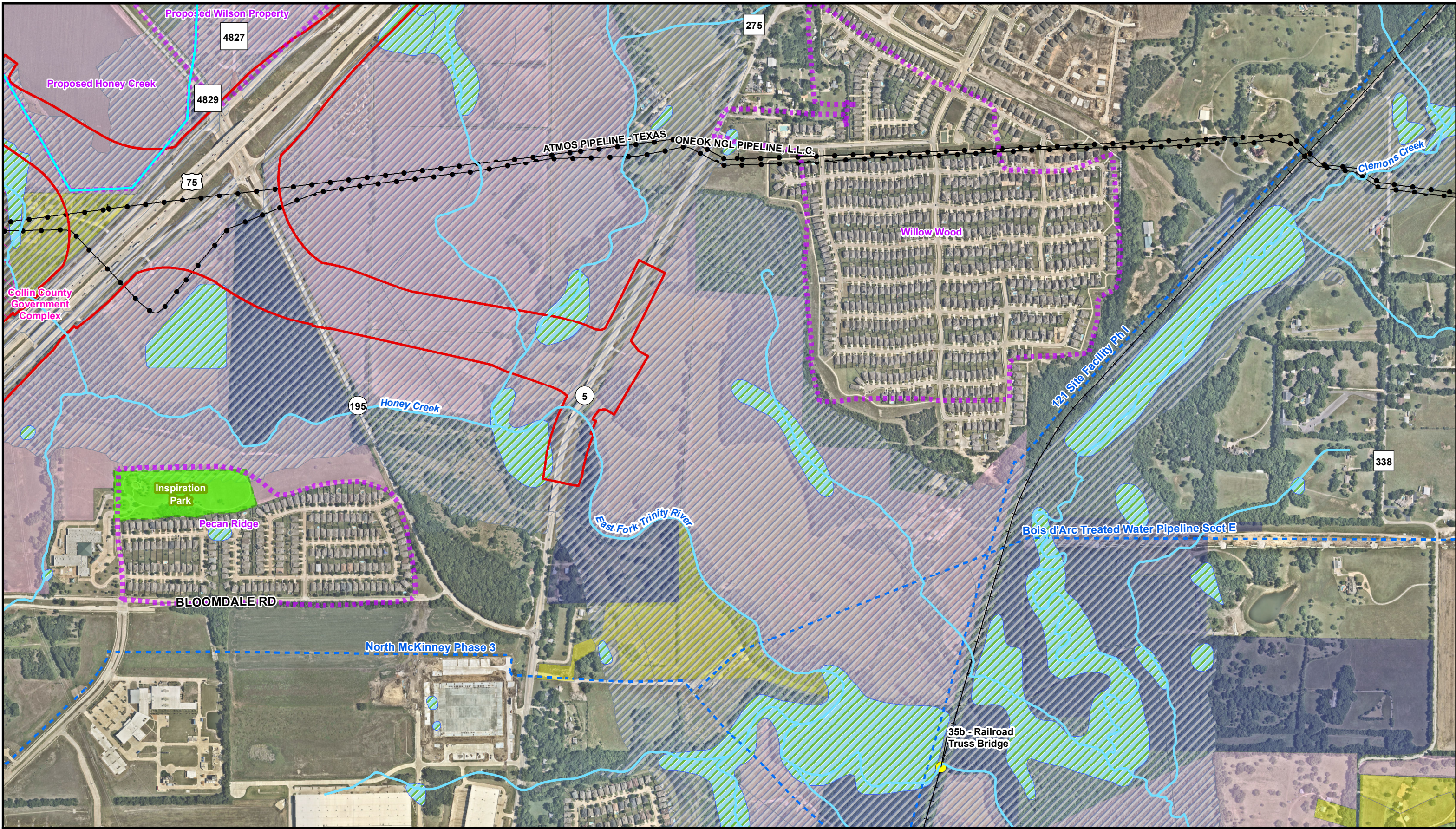
- Industrial
- Institutional
- Undeveloped/Vacant

- Wetlands (NWI)
- FEMA Floodway and Floodplains
- Parkland
- Major Waterlines
- Businesses

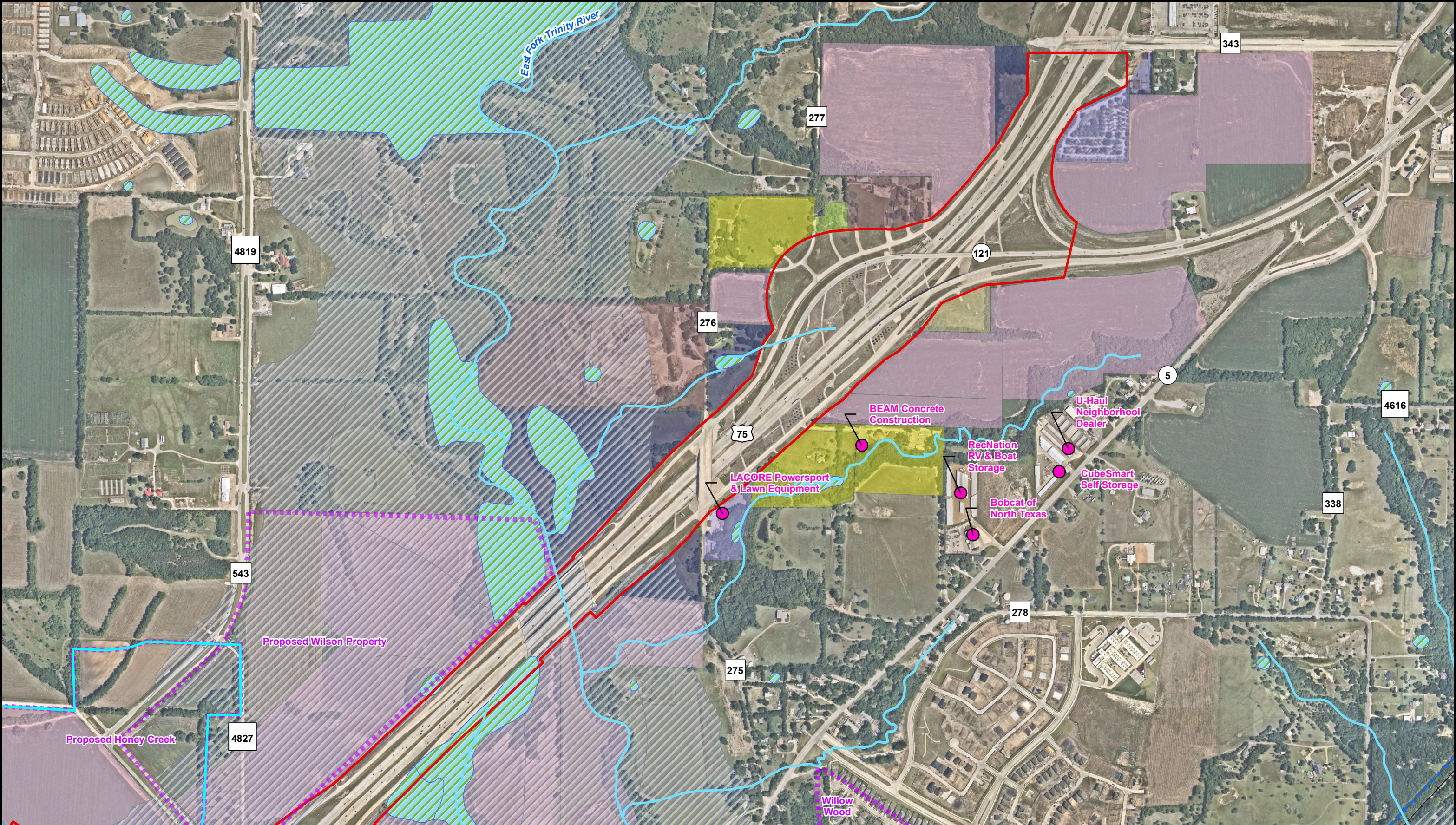


Resource Specific Map
Segment E (All Alternatives)
US 380 McKinney
Coit Road to FM 1827
Collin County, TX
Map 3 of 5

Path: C:\Users\sspurgeon\OneDrive - Burns & McDonnell\Desktop\Projects\US 380\DataFiles\ArcDocs\US 380 DEIS\Resource_Specific_SegE.mxd sspurgeon 10/20/2022
Service Layer Credits: Esri, HERE, Garmin, (c) OpenStreetMap contributors, and the GIS user community

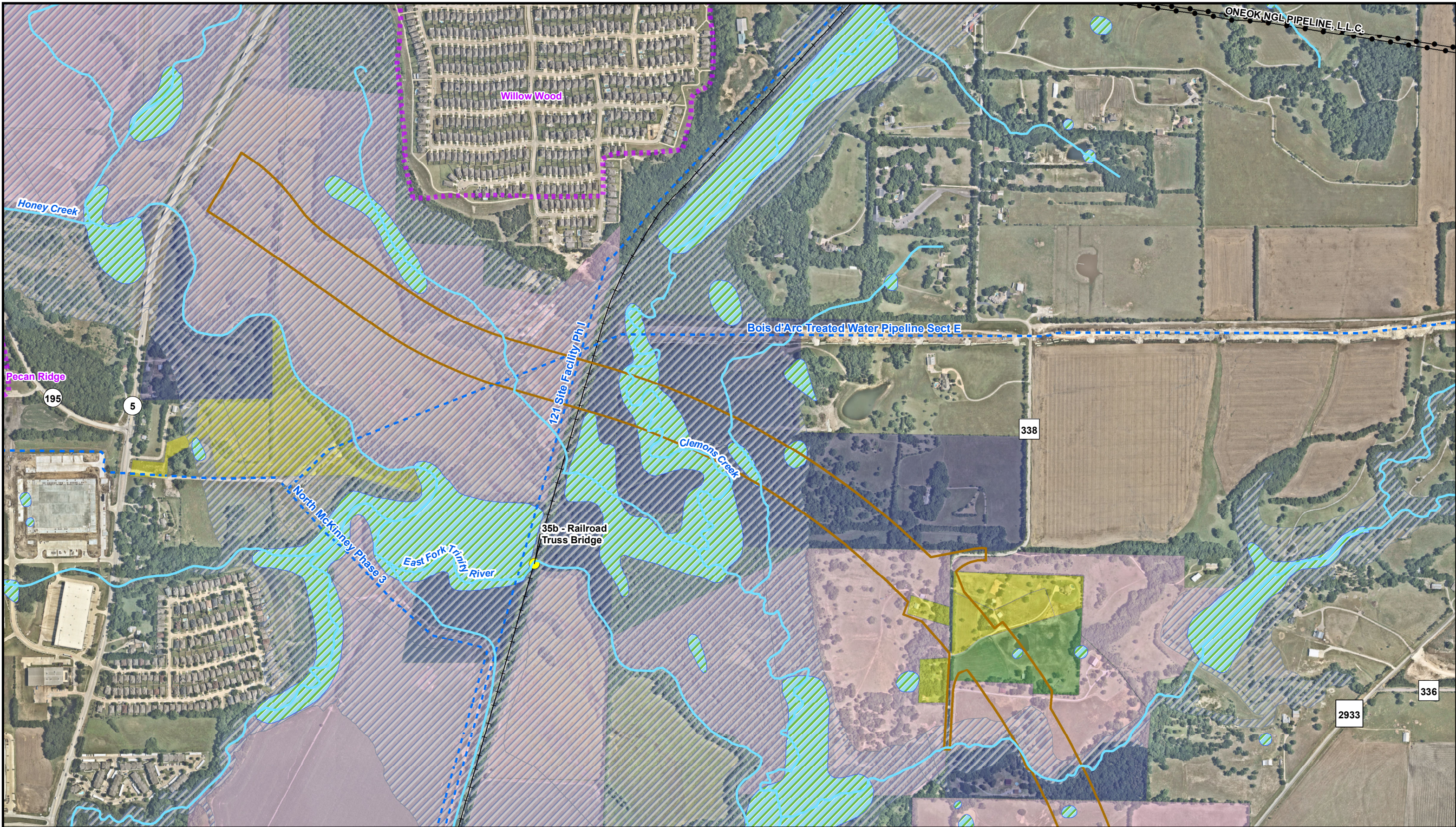


<ul style="list-style-type: none">Segment E Proposed ROW (All Alternatives)DevelopmentsCollin County Government ComplexAgriculture	<ul style="list-style-type: none">InstitutionalPrivate Open SpaceResidential - Rural Single-FamilyUndeveloped/Vacant	<ul style="list-style-type: none">Wetlands (NWI)FEMA Floodway and FloodplainsParklandPipelinesRailroadsMajor WaterlinesDetermined NHRP Eligible Resource				<p>Resource Specific Map Segment E (All Alternatives) US 380 McKinney Coit Road to FM 1827 Collin County, TX Map 4 of 5</p>
---	---	--	--	--	--	---

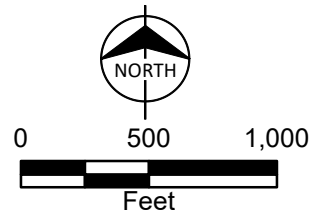


<ul style="list-style-type: none">Segment E Proposed ROW (All Alternatives)DevelopmentsAgricultureCommercialIndustrial	<ul style="list-style-type: none">Residential - Rural Single-FamilyResidential - Single-FamilyUndeveloped/VacantUtility/Infrastructure	<ul style="list-style-type: none">Wetlands (NWI)FEMA Floodway and FloodplainsRailroadsMajor WaterlinesBusinesses				<p>Resource Specific Map Segment E (All Alternatives) US 380 McKinney Coit Road to FM 1827 Collin County, TX Map 5 of 5</p>
--	---	--	--	--	--	---

Path: C:\Users\sspurgeon\OneDrive - Burns & McDonnell\Desktop\Projects\US 380\MapDocs\US 380 DEIS\Resource_Specific_SegC.mxd ssurgeon 10/20/2022
Service Layer Credits: Esri, HERE, Garmin, (c) OpenStreetMap contributors, and the GIS user community

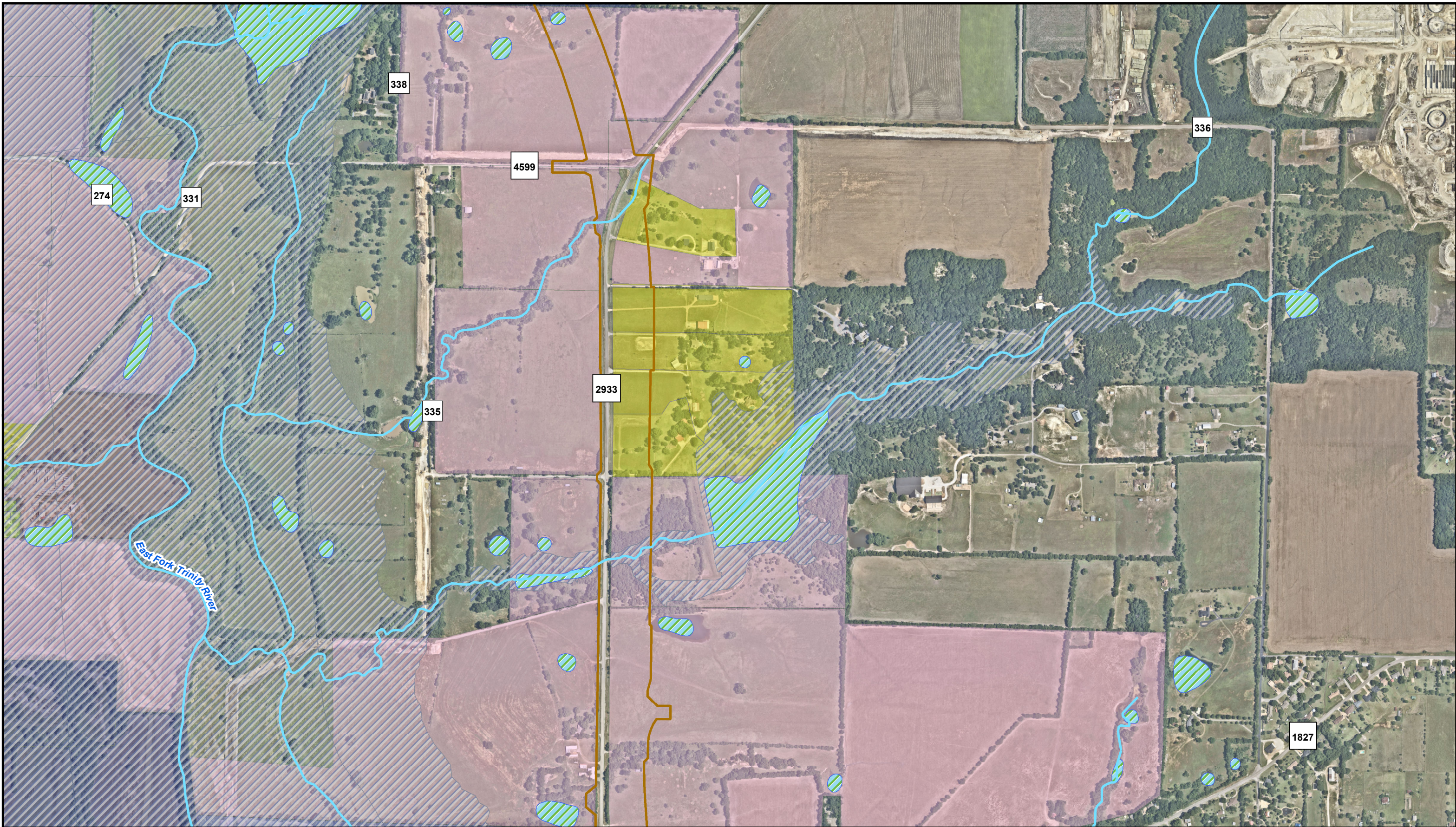


- | | | |
|---|-----------------------------------|-----------------------------------|
| Segment C Proposed ROW W/Spur (Blue/Brown Alternatives) | Private Open Space | Pipelines |
| Developments | Residential - Rural Single-Family | Major Waterlines |
| Agriculture | Undeveloped/Vacant | Determined NRHP Eligible Resource |
| | Railroads | |
| | Wetlands (NWI) | |
| | FEMA Floodway and Floodplains | |

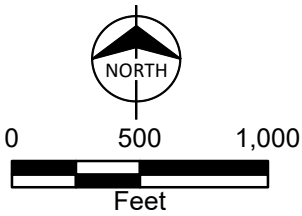
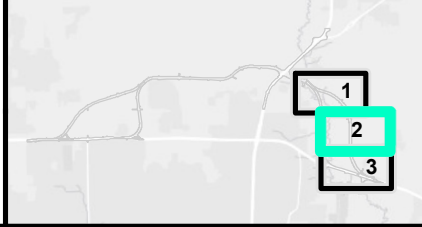


Resource Specific Map
Segment C (Blue/Brown Alternatives)
US 380 McKinney
Coit Road to FM 1827
Collin County, TX
Map 1 of 3

Path: C:\Users\sspurgeon\OneDrive - Burns & McDonnell\Desktop\Projects\US 380\DataFiles\ArcDocs\US 380 DEIS\Resource_Specific_SegC.mxd ssurgeon 10/20/2022
Service Layer Credits: Esri, HERE, Garmin, (c) OpenStreetMap contributors, and the GIS user community

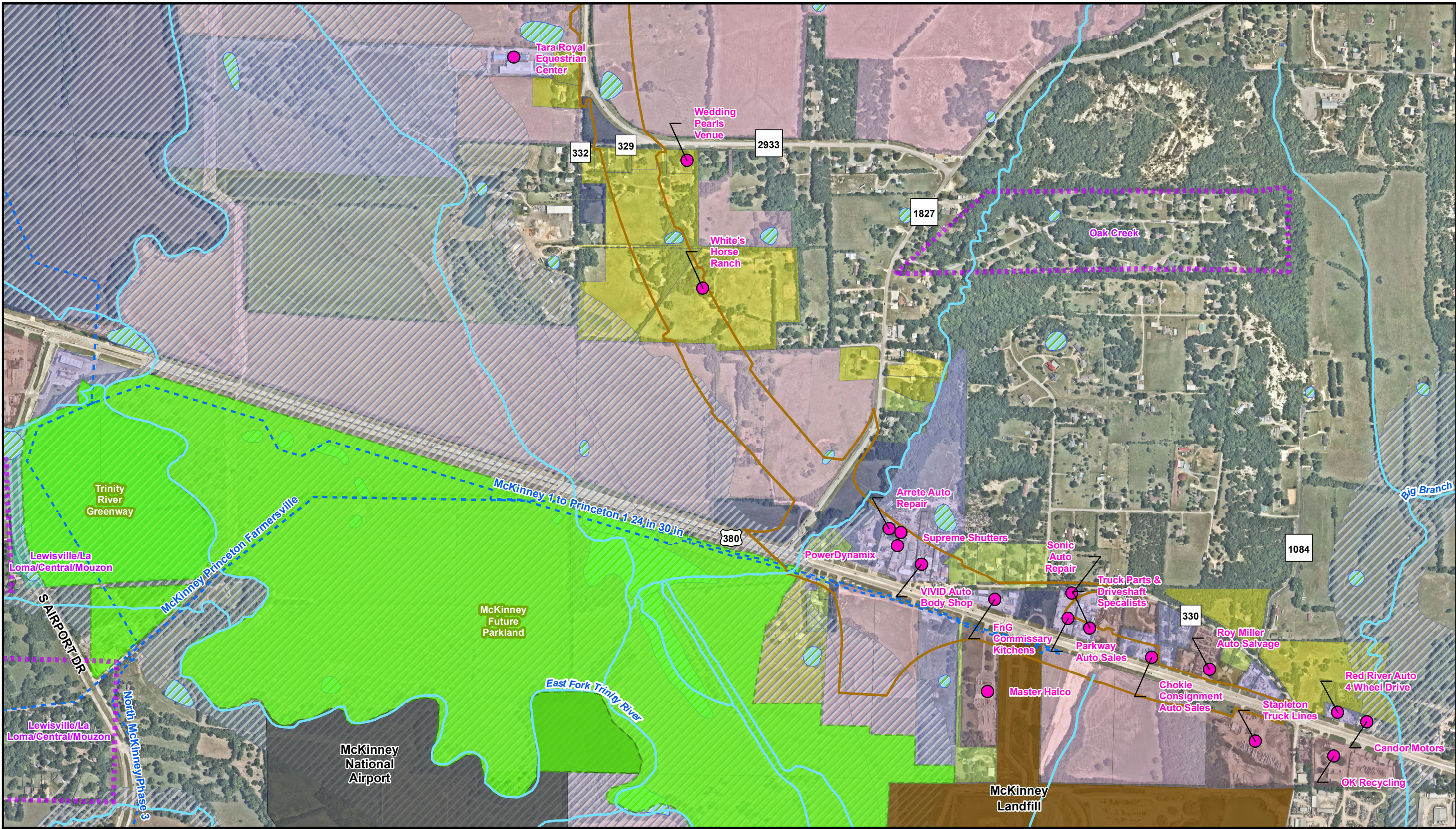


- | | |
|---|-----------------------------------|
| Segment C Proposed ROW W/Spur (Blue/Brown Alternatives) | Residential - Rural Single-Family |
| Agriculture | Residential - Single-Family |
| Commercial | Undeveloped/Vacant |
| Industrial | Wetlands (NWI) |
| | FEMA Floodway and Floodplains |



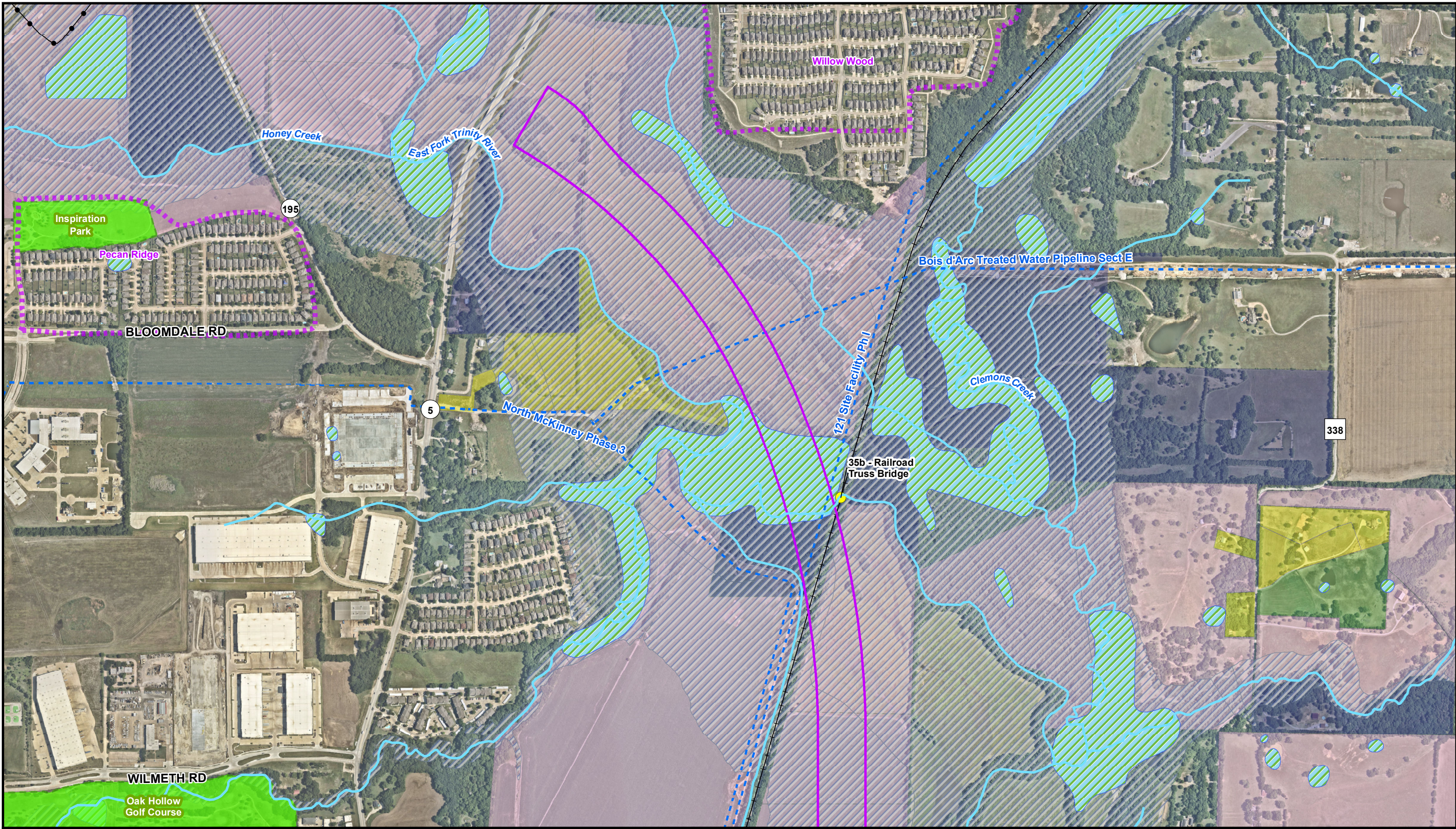
Resource Specific Map
Segment C (Blue/Brown Alternatives)
US 380 McKinney
Coit Road to FM 1827
Collin County, TX
Map 2 of 3

Path: C:\Users\spurgeon\OneDrive - Burns & McDonnell\Desktop\Projects\US 380\DataFiles\ArcDocs\US 380 DEIS\Resource_Specific_SegC.mxd spurgeon 10/20/2022
Service Layer Credits: Esri, HERE, Garmin, (c) OpenStreetMap contributors, and the GIS user community



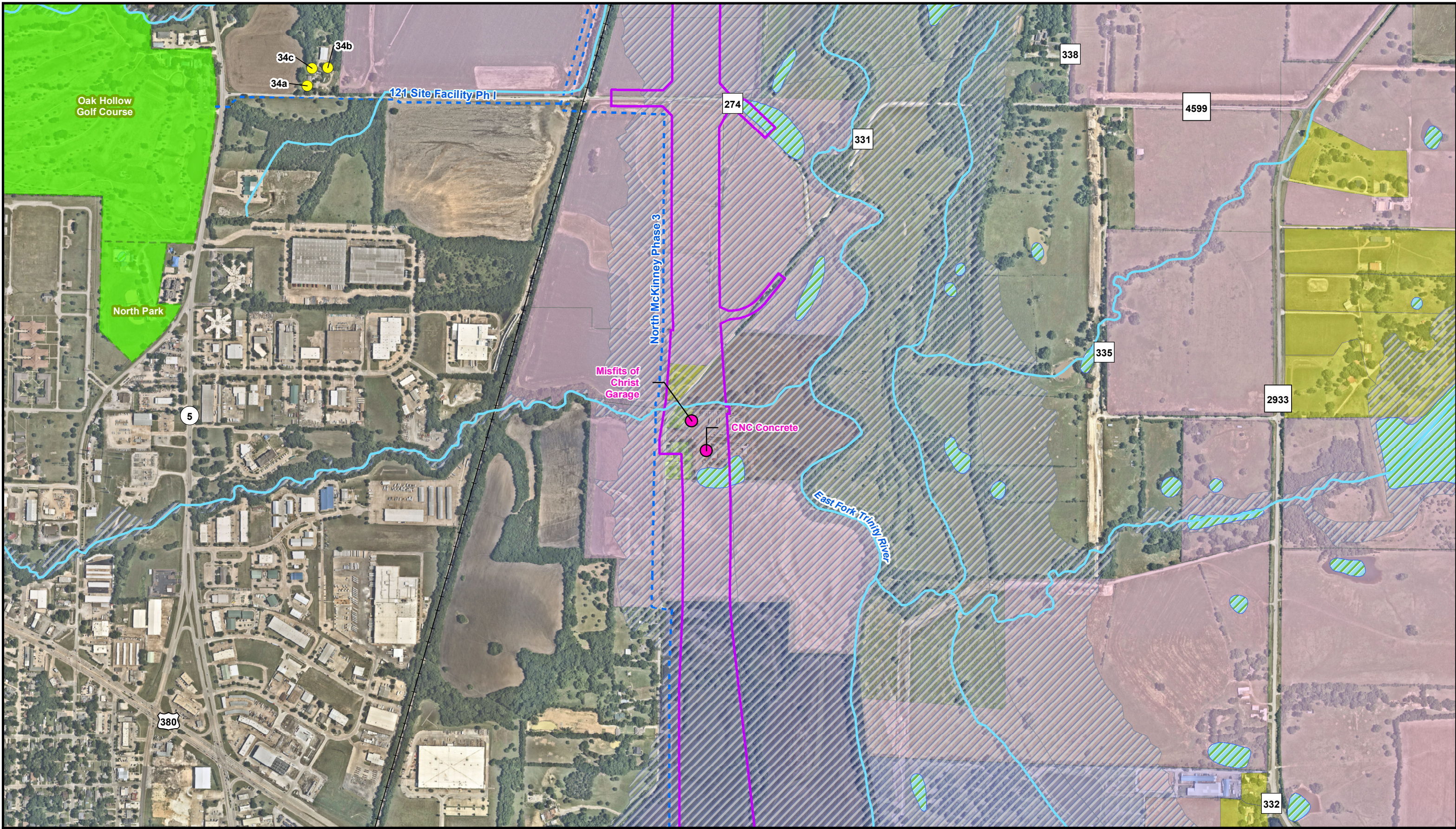
<ul style="list-style-type: none">Segment C Proposed ROW W/Spur (Blue/Brown Alternatives)DevelopmentsAgricultureCommercialIndustrialInstitutional	<ul style="list-style-type: none">Other Park Lands and Open SpaceResidential - Rural Single-FamilyResidential - Single-FamilyResidential - VacantUndeveloped/VacantParklandLandfill	<ul style="list-style-type: none">McKinney National Airport PropertyWetlands (NWI)FEMA Floodway and FloodplainsMajor WaterlinesBusinesses				<p>Resource Specific Map Segment C (Blue/Brown Alternatives) US 380 McKinney Coit Road to FM 1827 Collin County, TX Map 3 of 3</p>
--	---	---	--	--	--	--

Path: C:\Users\spurgeon\OneDrive - Burns & McDonnell\Desktop\Projects\US 380\MapDocs\US 380 DEIS\Resource_Specific_SegD.mxd
Service Layer Credits: Esri, HERE, Garmin, (c) OpenStreetMap contributors, and the GIS user community



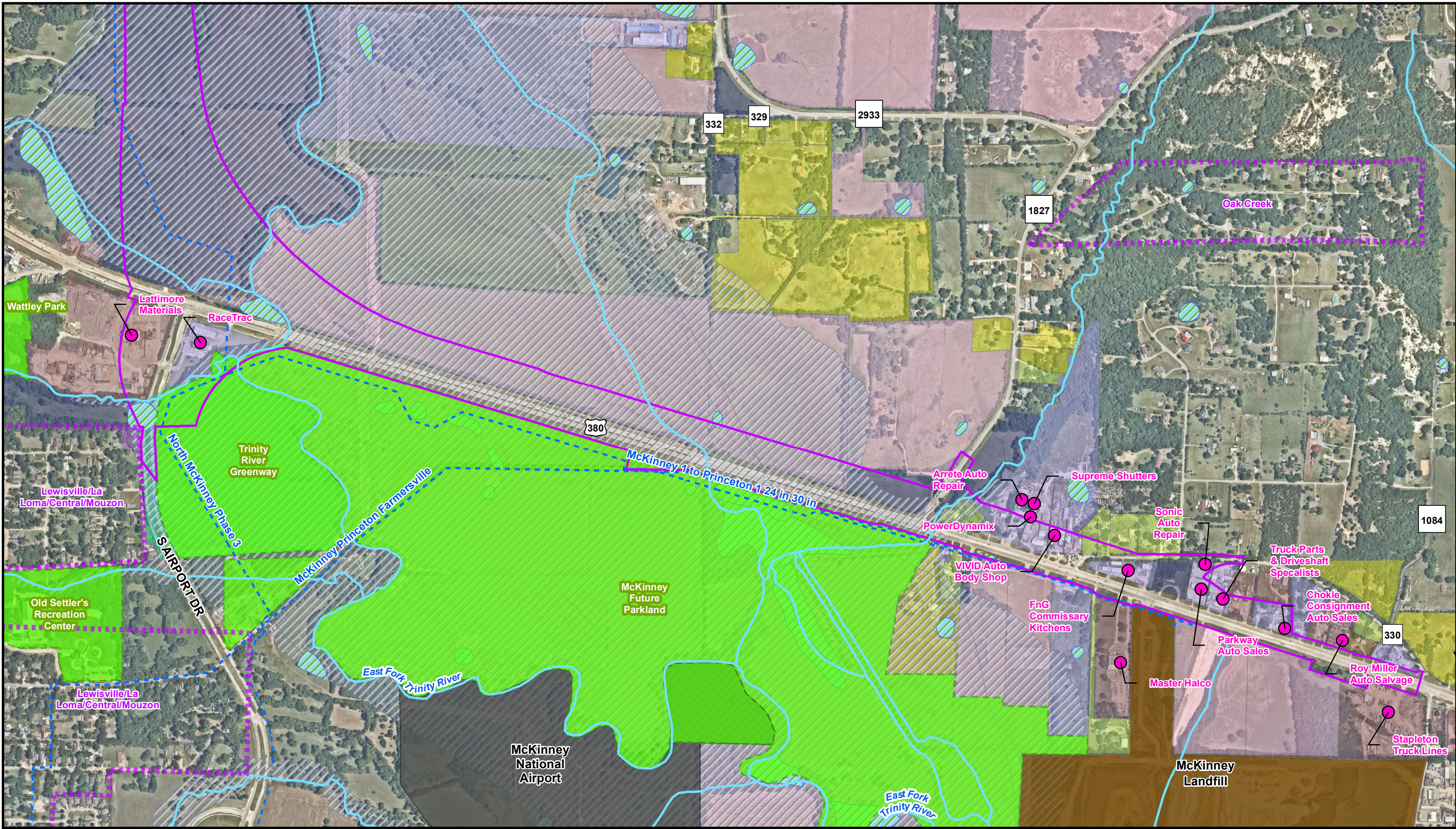
<ul style="list-style-type: none">Segment D Proposed ROW W/Spur (Purple/Gold Alternatives)DevelopmentsAgriculture	<ul style="list-style-type: none">Private Open SpaceResidential - Rural Single-FamilyUndeveloped/VacantParkland	<ul style="list-style-type: none">Wetlands (NWI)FEMA Floodway and FloodplainsRailroadsPipelinesMajor WaterlinesDetermined NRHP Eligible Resource				<p>Resource Specific Map Segment D (Purple/Gold Alternatives) US 380 McKinney Coit Road to FM 1827 Collin County, TX Map 1 of 3</p>
---	--	---	--	--	--	---

Path: C:\Users\sspurgeon\OneDrive - Burns & McDonnell\Desktop\Projects\US 380\DataFiles\ArcDocs\US 380 DEIS\Resource_Specific_SegD.mxd ssurgeon 10/20/2022
Service Layer Credits: Esri, HERE, Garmin, (c) OpenStreetMap contributors, and the GIS user community



<ul style="list-style-type: none">Segment D Proposed ROW W/Spur (Purple/Gold Alternatives)Residential - Rural Single-FamilyAgricultureCommercialIndustrialUndeveloped/VacantParkland	<ul style="list-style-type: none">Wetlands (NWI)FEMA Floodway and FloodplainsRailroadsMajor WaterlinesDetermined NRHP Eligible ResourceBusinesses				<p>Resource Specific Map Segment D (Purple/Gold Alternatives) US 380 McKinney Coit Road to FM 1827 Collin County, TX Map 2 of 3</p>
--	--	--	--	--	---

Path: C:\Users\sspurgeon\OneDrive - Burns & McDonnell\Desktop\Projects\US 380\MapDocs\US 380 DEIS\Resource_Specific_SegD.mxd ssurgeon 10/20/2022
Service Layer Credits: Esri, HERE, Garmin, (c) OpenStreetMap contributors, and the GIS user community



<ul style="list-style-type: none">Segment D Proposed ROW W/Spur (Purple/Gold Alternatives)DevelopmentsAgricultureCommercialIndustrialInstitutional	<ul style="list-style-type: none">Other Park Lands and Open SpaceResidential - Rural Single-FamilyResidential - Single-FamilyResidential - VacantUndeveloped/VacantParklandLandfillMcKinney National Airport Property	<ul style="list-style-type: none">Wetlands (NWI)FEMA Floodway and FloodplainsMajor WaterlinesBusinesses				<p>Resource Specific Map Segment D (Purple/Gold Alternatives) US 380 McKinney Coit Road to FM 1827 Collin County, TX Map 3 of 3</p>
---	--	--	--	--	--	---