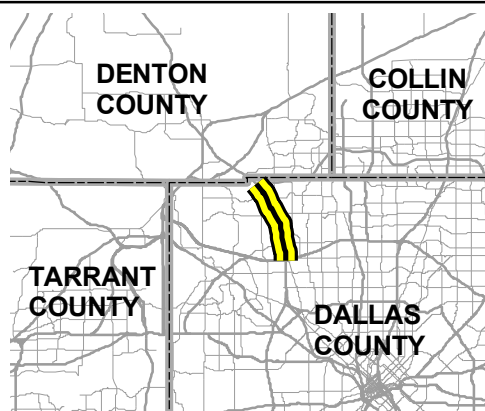
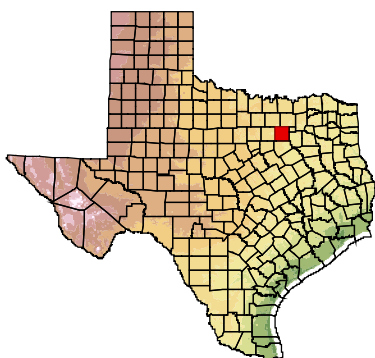


0 200 400 Feet



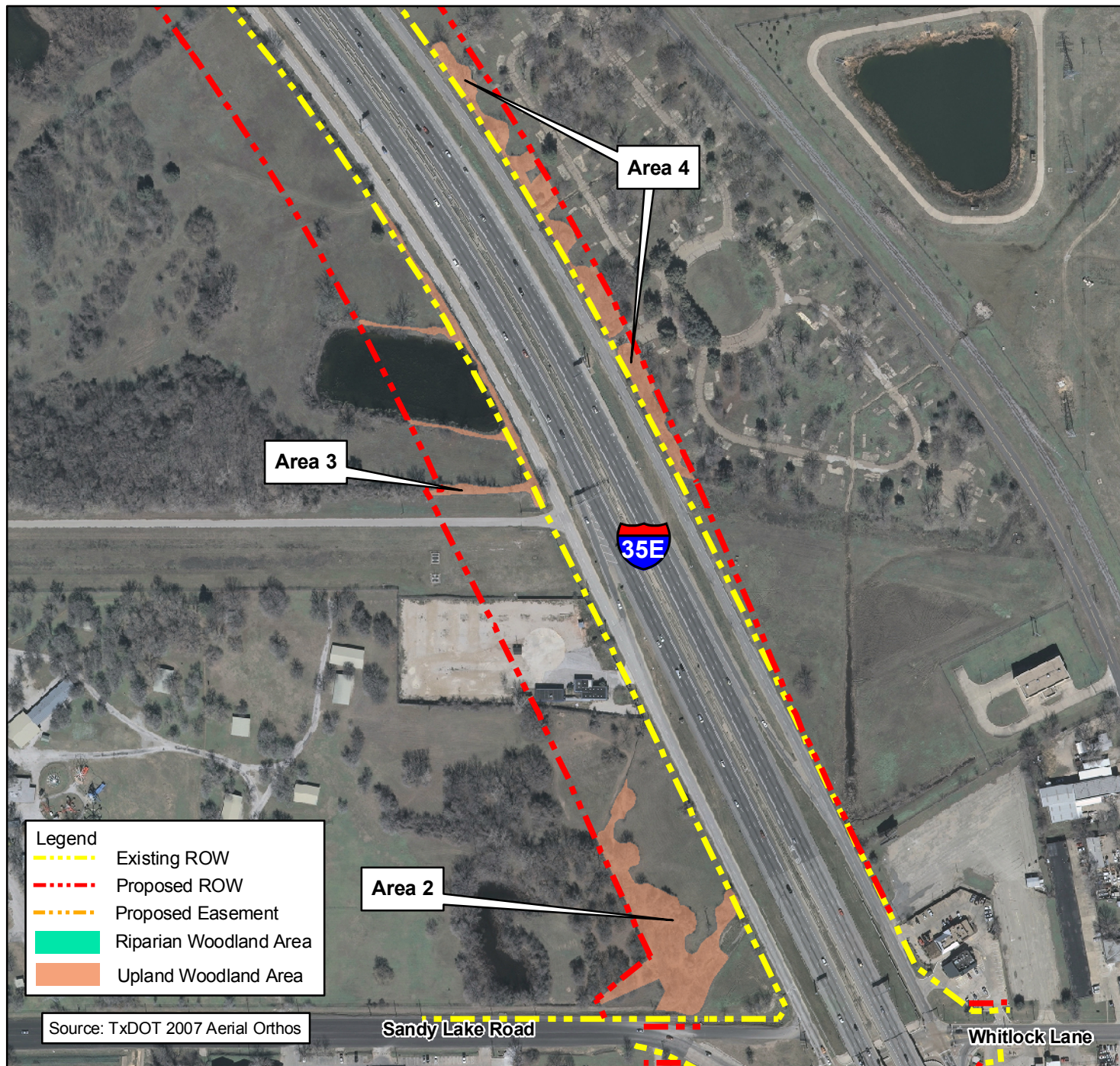
## FIGURE 4 TREE REMOVAL MAPS SHEET 1 OF 3

IH 35E  
FROM IH 635 TO PGBT

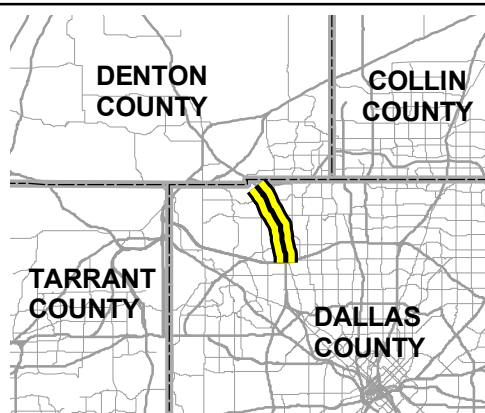
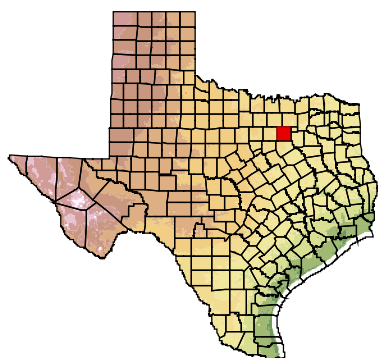
CSJs: 0196-03-138, 0196-03-180,  
0196-03-240

ENVIRONMENTAL ASSESSMENT  
DALLAS COUNTY, TEXAS





0 200 400 Feet



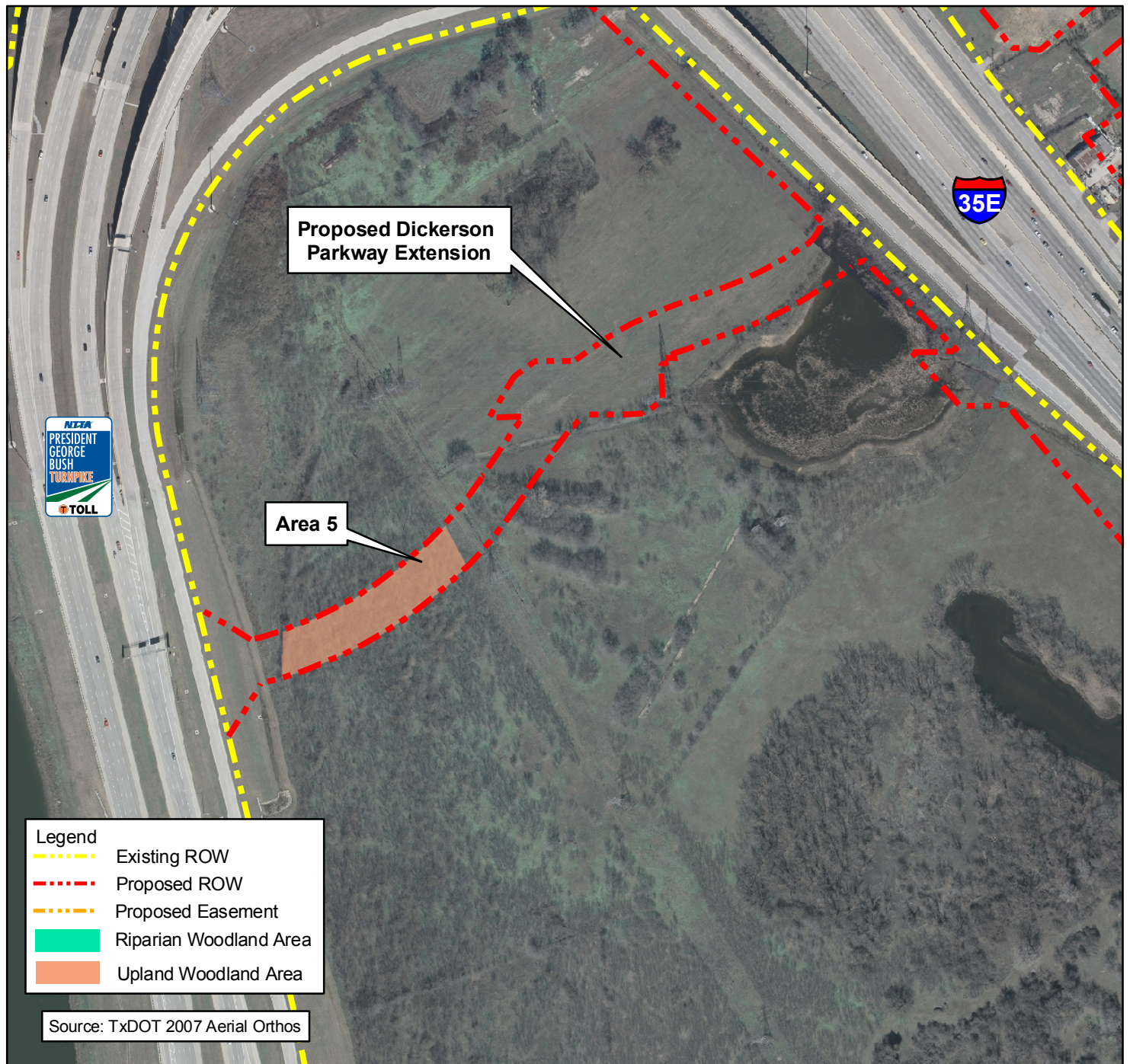
## FIGURE 4 TREE REMOVAL MAPS SHEET 2 OF 3

IH 35E  
FROM IH 635 TO PGBT

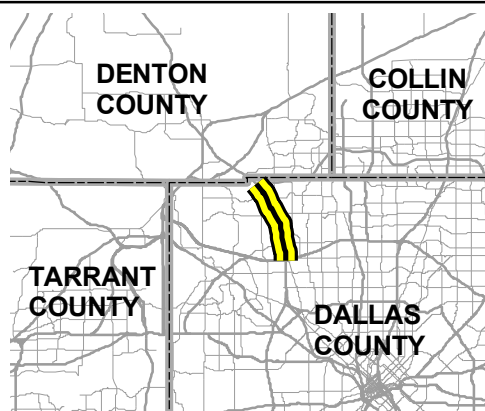
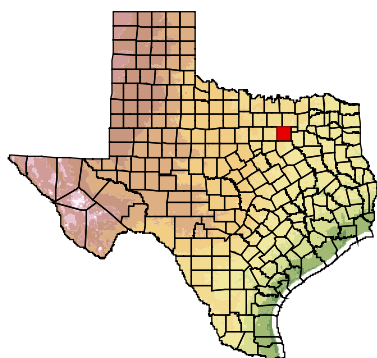
CSJs: 0196-03-138, 0196-03-180,  
0196-03-240

ENVIRONMENTAL ASSESSMENT  
DALLAS COUNTY, TEXAS





0 200 400 Feet



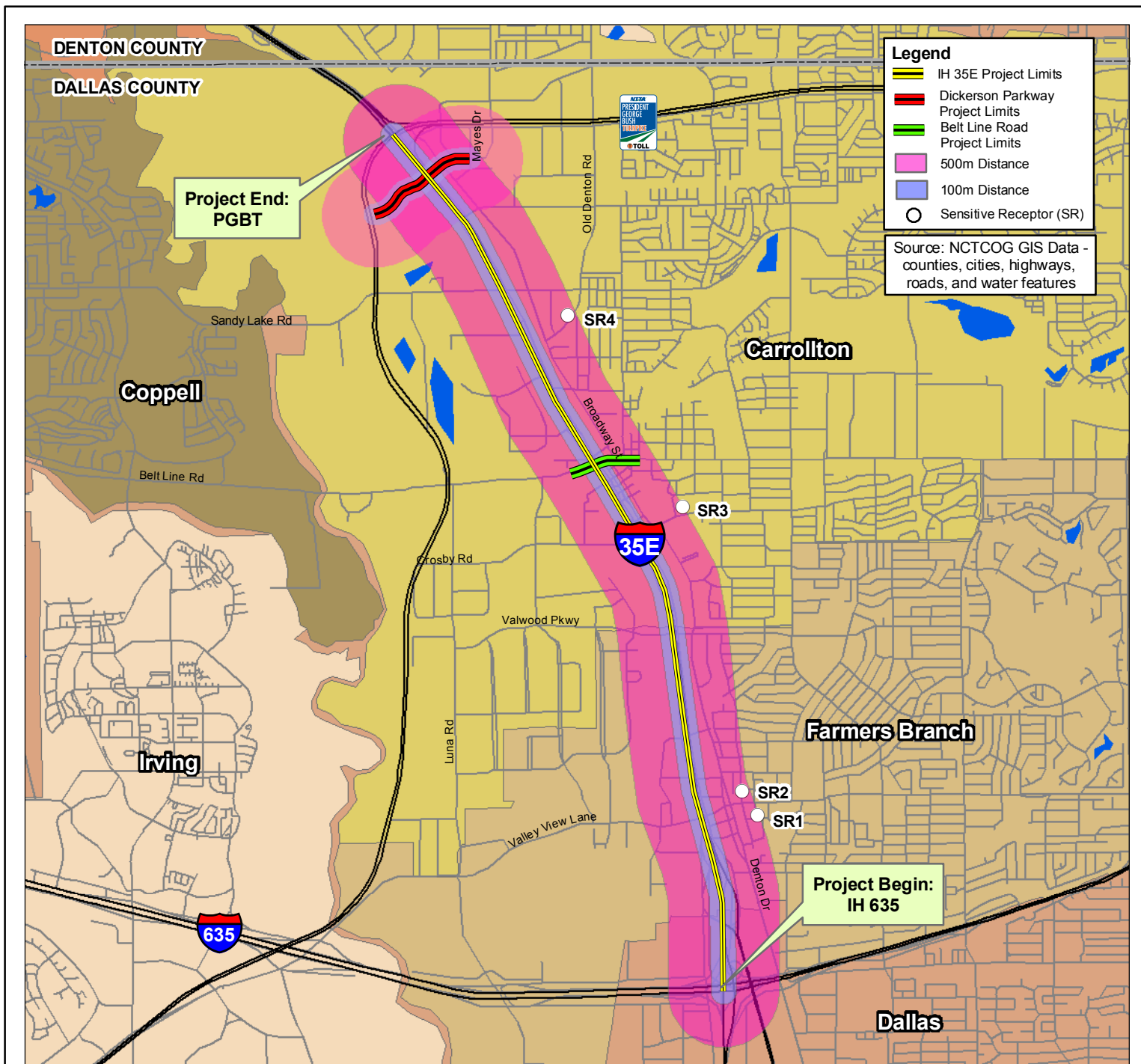
## FIGURE 4 TREE REMOVAL MAPS SHEET 3 OF 3

IH 35E  
FROM IH 635 TO PG&T

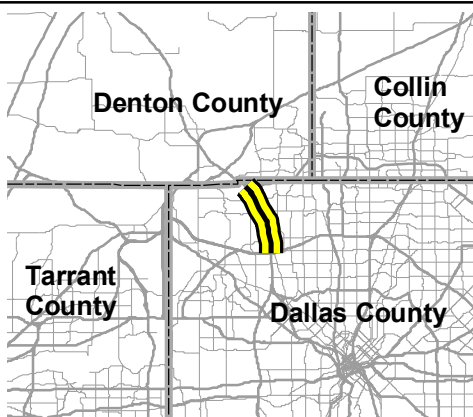
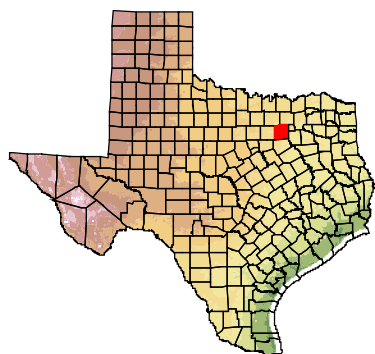
CSJs: 0196-03-138, 0196-03-180,  
0196-03-240

ENVIRONMENTAL ASSESSMENT  
DALLAS COUNTY, TEXAS





0 0.5 1 Miles



# **FIGURE 5** **MOBILE SOURCE AIR** **TOXICS (MSAT)** **SENSITIVE RECEPTORS**

IH 35E  
FROM IH 635 TO PGBT

CSJs: 0196-03-138, 0196-03-180,  
0196-03-240

ENVIRONMENTAL ASSESSMENT  
DALLAS COUNTY, TEXAS