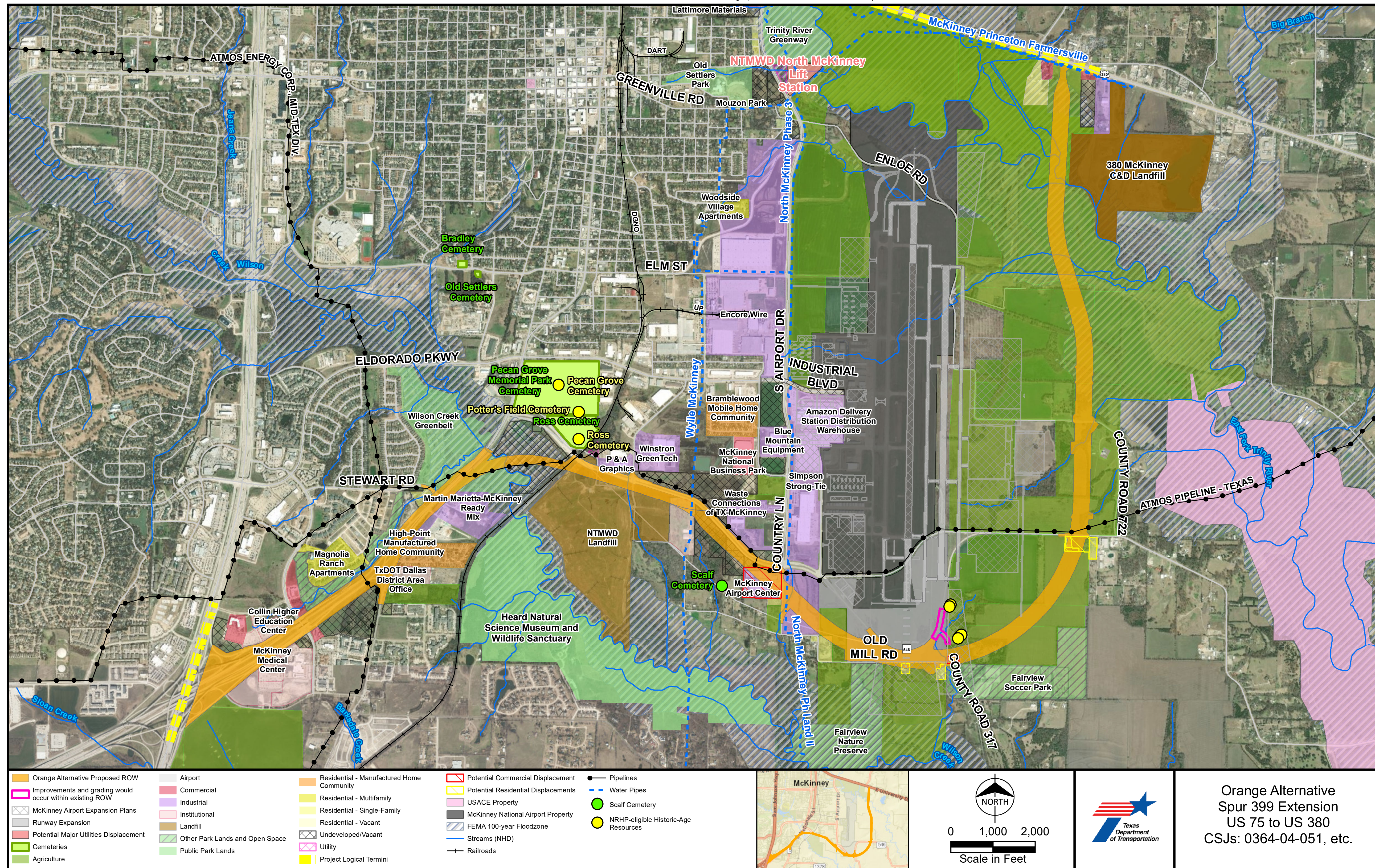




TEXAS DEPARTMENT OF TRANSPORTATION

ENVIRONMENTAL CONSTRAINTS

Service Layer Credits: Sources: Esri, HERE, Garmin, USGS, Intermap, INCREMENT P, NRCan, Esri Japan, METI, Esri China (Hong Kong), Esri Korea, Esri (Thailand), NGCC, (c) OpenStreetMap contributors, and the GIS User Community



Source: ESRI, TxDOT, Burns & McDonnell Engineering Company, Inc.

Issued: 10/14/2022

Orange Alternative
Spur 399 Extension
US 75 to US 380
CSJs: 0364-04-051, etc.