

Welcome to the TxDOT Dallas District’s virtual public meeting for the 2027-2030 Rural Transportation Improvement Program or RTIP! My name is Tamelia Curley and I’m the District Advanced Transportation Planning Director. There are some additional TxDOT personnel with me this afternoon that I would like to introduce:

**From the Navarro County Area Office, we have**

Juan Paredes, the Area Engineer

**From our District Planning Office**


Griselda Clark-El

Cinthia Rodriguez

Priya Chinnappa and


Shantrise Harris

We are here today to go over the projects to be included in the upcoming 2027-2030 Rural TIP.

 Connecting you with Texas.

## Agenda

<p><b>01</b>   Safety Minute</p> <p><b>02</b>   Dallas District and its boundaries</p> <p><b>03</b>   The Rural Transportation Improvement Program (TIP)</p> <p><b>04</b>   How the Rural TIP Impacts You</p>	<p><b>05</b>   How Projects are Selected for the Rural TIP</p> <p><b>06</b>   Projects by County</p> <p><b>07</b>   Funding</p> <p><b>08</b>   Next Steps</p>
---------------------------------------------------------------------------------------------------------------------------------------------------------------------------------------------------------------	---------------------------------------------------------------------------------------------------------------------------------------------------------------



**2027 – 2030 Rural TIP**

**Script:**

Today we will have a brief Safety Minute, followed by a discussion of the counties in the Dallas district and all the roads under the district’s care. We will also review the basics of what is the Rural TIP and why is it important for you to be here with us today. We will explain how the projects included in the program are selected and classified in order to make the most of the program.

Once you understand all of this, you will have the opportunity to review all the projects the Dallas District has included in the 2027-2030 program, both the big projects and the small supporting projects.

We will also go over funding, answering questions on “where does the money to pay for these projects come from? and how it gets distributed?”.

Lastly, we will outline all the options you have to comment on these projects and their priority.



*Drive like a Texan* is all about saving lives. It's a reminder for everyone in Texas to treat each other with a little bit of the kindness, respect, and neighborly spirit we're famous for, especially on the road. By showing courtesy and care behind the wheel the same way we would in person, we can make our roads safer for all.

### **Kind**

It's that simple. Treat others the way you want to be treated. Say thanks by giving a small wave, or just a friendly nod.

### **Courteous**

Courtesy isn't just about being polite in person. Show respect by letting others merge, giving plenty of space, and practicing patience on the road. Small actions save lives.

### **Safe**

The most important part of any journey is arriving safely. Not only do you keep yourself safe, but you also help

protect every driver, passenger, biker, and pedestrian sharing the road.

## District Boundaries

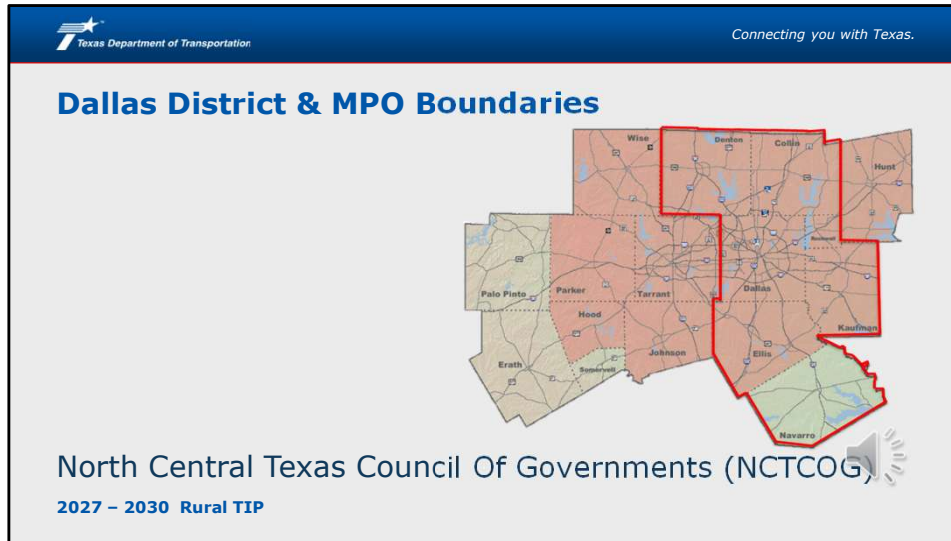
TxDOT Dallas District



2027 – 2030 Rural TIP

### Script:

Now for a little background on the TxDOT Dallas District. The Dallas District includes all of the 7 counties shown in this map: Denton, Collin, Dallas, Rockwall, Kaufman, Ellis and Navarro counties.



**Script:**

This map shows the boundary of the North Central Texas Council of Governments or NCT-COG, the metropolitan planning organization or MPO for the Dallas/Fort Worth metroplex. We will discuss the role that the MPO plays in the TIP process later in this presentation.

The NCT-COG planning area boundary is shaded in pink. Projects identified within this area are included in the NCT-COG’s Metropolitan Transportation Improvement Program or Metro TIP. Projects outside of the NCT-COGs planning area are included in the districts rural TIP. Of the 7 Dallas District counties outlined in red, only projects in Navarro County are included in the Dallas District’s 2027-2030 Rural TIP.

**Rural Transportation Improvement Program (TIP)**

**THE RURAL TIP**  
 includes both grouped projects and individually listed projects that include added-capacity projects and regionally significant projects to be funded outside of MPO boundary, and within a TxDOT district during the next four years, including those eligible for federal funding.

It can include projects for :

Car, Pedestrian, Bus, Bicycle, Truck

**A Rural TIP project is anticipated to be funded within the next four years.**

**It shows regional agreement (community-region-state) on the need of a project.**

2027 - 2030 Rural TIP


**Script:**

What is the Rural Transportation Improvement Program or Rural TIP? The Rural Transportation Improvement Program is a list of local projects to be funded in a TxDOT District over the next 4 years. This means that all projects included in the list are expected to be underway within 4 years following its approval. So, these are the changes you can expect to go to contract in the near future!

The Rural TIP is multimodal; meaning it includes projects relating to highways, bicycle and pedestrian facilities, transit services, and freight projects as well as the preliminary studies used to define those projects.

Rural TIP is meant to show regional agreement on the need and priority of a transportation project, so all parties involved can be sure they are making the best investment for the community. It is also expected to be consistent with the projects and objectives included in the regional Long Range Transportation Plans, to ensure that all agencies are working towards the same goal.

The Rural TIP is a part of the Statewide Transportation Improvement Program or STIP. By Federal law, no project can receive federal funding unless it is listed in the Rural TIP!

 *Connecting you with Texas.*

## How the Rural TIP Impacts You

The Rural TIP process includes opportunities to provide input on the priority of major projects that are listed on it.

Local and small projects around your community dealing with safety and access also get funding through the Rural TIP, for example:


- **Road expansions**
- **Pavement repair or maintenance**
- **Sidewalks**
- **New or improved signals**
- **Bike lanes**
- **Turning lanes**

**By participating today, you are providing input in a number projects!**

**2027 – 2030 Rural TIP**

**You know your community best!**

Tell us what project should come first and why



### Script:

Now that we've overviewed the basis of the Rural TIP you might ask "why is this program important to me?". Your participation in the development of the Rural TIP is important because funding secured by this process is intended to address your communities' most immediate needs. By providing comments on the priority of the projects included, you are helping us identify regional priorities. Through your attendance this afternoon, you are having a regional impact. You are helping us be more effective with your money and you are also ensuring that we are investing where we should.

## How Projects are Selected for the Rural TIP

Projects are identified and selected by evaluating existing and future needs based on:

current conditions and projections, statewide and regional plans, public input regarding transportation priorities

^ This would be you, right now!



2027 - 2030 Rural TIP

### Script:

Metropolitan Planning Organizations or MPOs and local governments are responsible for selecting projects within their boundaries

TxDOT, through the District office, is responsible for selecting of all projects relating to the state transportation system and other national roadways. This includes Interstates, State and US Highways but most importantly this can also include the Farm-to-Market and Ranch-to-Market roads you use every day. The projects you will review today should respond to local needs!

It is our responsibility to provide you with the opportunity to provide input on which projects should be advanced.

## How Projects are Selected for the Rural TIP

Selected projects are separated into  
**2**  
main categories

### 1. Regionally Significant Projects

Those with the appropriate scale or reach to be considered as stand-alone projects in a given program year have their own category.

### 2. Grouped Projects

Those without the scale to stand on their own are grouped into one of 11 subcategories and considered as a single line item in the list.



2027 – 2030 Rural TIP

### Script:

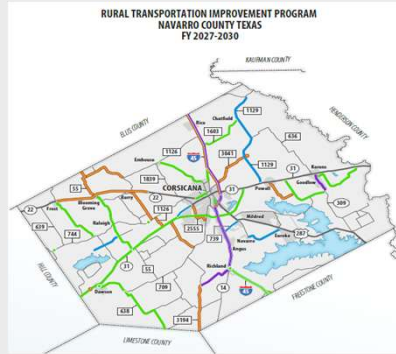
Once projects have been defined, they are evaluated according to their scale and classified according to the funding they require, as well as their potential impact.

Large projects are categorized as Regionally Significant Projects and are included as stand-alone items. An example of a large project would be adding lanes along an existing road or building a new road.

To simplify this budgeting and planning process, smaller projects are lumped together into 11 separate subcategories, which are referred to as Grouped Projects. Grouped projects include things like landscaping, safety lighting, traffic signals, bridge replacements, new bicycle and pedestrian facilities and minor preventative maintenance projects such as seal coats and overlays. This grouping practice facilitates the federal funding of smaller projects. An example of a smaller project that would be grouped is resurfacing the pavement along an FM road.

## Rural TIP Navarro County Projects

FISCAL YEAR
2027
2028
2029
2030



2027 - 2030 Rural TIP

### Script:

This map shows all Projects included in the 2027-2030 Rural TIP for Navarro County. This map, as well as the project details list on the next slide, are also available on the meeting website for review.

### Rural TIP Navarro County Projects FY 2027

CSJ	Highway	County	Limits from	Limits to	Project Description	Total Project Cost
0166-01-060	IH 45	Navarro	Freestone County Line	SH 14	Full depth concrete repair	\$ 2,960,775.84
0093-01-108	IH 45	Navarro	SH 14	E OF US 287	Full depth concrete repair	\$ 3,245,497.20
0092-06-111	IH 45	Navarro	E of US 287	Ellis County Line	Full depth concrete repair	\$ 3,568,976.88
0574-01-035	SH 309	Navarro	SH 31	FM 1393	Flexible pavement repair, mill, and overlay	\$ 4,005,386.56
0999-01-048	FM 1394	Navarro	SH 14	FM 3194	Restore existing pavement and add shoulders	\$11,769,678.90



2027 – 2030 Rural TIP

**Script:**

The tables on the following slides show the details of projects included in the 2027-2030 Rural TIP for Navarro County.

In FY 2027, we will be constructing concrete repairs on IH 45 across multiple segments, including from the Freestone County Line to SH 14, from SH 14 to east of US 287, and from east of US 287 to the Ellis County Line. On SH 309, from SH 31 to FM 1393, we will be performing flexible pavement repair, milling, and overlaying the road to improve pavement conditions. Lastly, on FM 1394 from SH 14 to FM 3194, we will be restoring the existing pavement and adding shoulders to enhance safety and functionality.

### Rural TIP Navarro County Projects FY 2028

CSJ	Highway	County	Limits from	Limits to	Project Description	Total Project Cost
0162-04-064	SH 31	Navarro	FM 55 (S Kerr St)	SH0031/BS031D Split	Seal Coat and Pavement Markings	\$1,323,519
0162-03-045	SH 31	Navarro	Hill County Line	FM 55	Seal Coat and Pavement Markings	\$447,525
0092-13-034	BI 45F	Navarro	IH 45N	Hardy Ave	Seal Coat	\$222,203
0092-13-035	BI 45F	Navarro	IH 45	SH 287	Seal Coat	\$165,358
0996-01-018	FM 638	Navarro	FM 709	Limestone Countyline	Seal Coat	\$402,255
0162-09-044	FM 709	Navarro	FM 1838	FM 638	Seal coat	\$189,990
1288-01-020	FM 1393	Navarro	SH 31	SH 309	Seal Coat	\$327,780
3147-01-015	FM 3096	Navarro	FM 309	SH 31	Seal Coat	\$352,260
3401-01-010	FM 3383	Navarro	FM 1126	EOM (Beaton St)	Seal Coat	\$293,580
0166-01-058	IH 45	Navarro	0.2 Mi S of FM 246	FM 1394	Seal Coat	\$439,560
0166-01-059	IH 45	Navarro	FM 1394	SH 14	Seal Coat	\$84,822

2027 – 2030 Rural TIP

#### Script:

In FY 2028, We will Seal Coat various roadways and add pavement markings.

These Roadways include:

On SH 31 from FM 55 (S Kerr St) to the SH 31/BS 31D Split and from the Hill County Line to FM 55

On BI 45F from IH 45N to Hardy Ave and from IH 45 to SH 287

On FM 638 from FM 709 to Limestone County Line

On FM 709 from FM 1838 to FM 638

On FM 1393 from SH 31 to SH 309

On FM 3096 from FM 309 to SH 31

On FM 3383 from FM 1126 to end of maintenance, or EOM, which is Beaton St

On IH 45 from South of FM 246 to FM 1394

And On IH 45 from FM 1394 to SH 14

### Rural TIP Navarro County Projects FY 2028 (continue)

CSJ	Highway	County	Limits from	Limits to	Project Description	Total Project Cost
0093-01-107	IH 45	Navarro	SH 14	Richland Creek	Seal Coat	\$88,643
0166-10-005	SH 75	Navarro	0.58 Mi N of FM 246	Freestone Countyline	Seal coat	\$53,370
0162-05-007	FM 709	Navarro	SH 31	FM 1839	Seal Coat	\$24,750
1663-03-021	FM 744	Navarro	At Rush Creek	.	Replace Bridge and the approaches	\$3,587,489
1663-02-013	FM 744	Navarro	Richland Creek Bridge	.	Replace Bridge and Approaches	\$2,309,392
1522-01-013	FM 1603	Navarro	IH 45 NB Frontage Road	FM 1129	Rehabilitate existing roadway and add shoulders	\$14,870,511
0162-11-003	SH 31	Navarro	West BS 31D	East BS 31D	Full Depth ACP repair	\$8,805,885
0121-05-053	SH 22	Navarro	37th Street	BS SH 31D	Flexible pavement repair, mill and overlay	\$1,892,169
0121-08-022	FM 55	Navarro	SH 22	SH 31	Install Preformed Thermoplastic Centerline and Edgeline Rumble Strips	\$847,822
0747-02-021	FM 667	Navarro	SH 22	FM 744	Install Preformed Thermoplastic Centerline and Edgeline Rumble Strips	\$679,401

2027 – 2030 Rural TIP

#### Script:

Continuing in FY 2028, we have additional sealcoats

On IH 45 from SH 14 to Richland Creek

On SH 75 from N of FM 246 to the Freestone County line

On FM 709 from SH 31 to FM 1839

On FM 744 at Rush Creek and at Richland Creek, we will be replacing the bridges and the approaches

On FM 1603 from IH 45 NB Frontage Road to FM 1129 we will Rehabilitate the existing roadway and add shoulders

On SH 31 from West BS 31D to East BS 31D we will be doing a Full Depth ACP repair

On SH 22 from 37th Street to BS SH 31D we will be constructing a flexible pavement repair, mill and overlay the surface of the road

And lastly, we will install preformed thermoplastic centerline and edgeline rumble strips on FM 55 from SH 22 to SH 31 and on FM 667 from SH 22 to FM 744

### Rural TIP Navarro County Projects FY 2029

CSJ	Highway	County	Limits from	Limits to	Project Description	Total Project Cost
3090-01-015	FM 3041	Navarro	CO 4722	FM 1129	Seal Coat and Pavement Markings	\$302,388
1451-03-018	FM 55	Navarro	Ellis County Line	SH 22	Seal Coat and Pavement Markings	\$485,730
1724-01-021	FM 1126	Navarro	SH 22	FM 744	Sealcoat mainlanes	\$449,407
1724-01-022	FM 1126	Navarro	FM 744	SH 31	Sealcoat mainlanes	\$152,883
0999-01-051	FM 1394	Navarro	FM 3194	FM 641	Sealcoat mainlanes	\$346,006
2462-01-012	FM 1394	Navarro	FM 641	Freestone CL	Sealcoat mainlanes	\$285,786
1724-02-016	FM 2452	Navarro	SH 31	FM 709	Sealcoat mainlanes	\$458,648
1724-03-011	FM 2930	Navarro	FM 55	FM 1126	Sealcoat mainlanes	\$550,096
3090-01-018	FM 3041	Navarro	IH 45	Chambers Crk	Sealcoat mainlanes	\$247,763
0719-03-005	FM 3041	Navarro	FM 1129	CO 4714	Sealcoat mainlanes	\$37,847
0093-01-109	IH 45	Navarro	BI 45F	BNSF RR	Sealcoat mainlanes	\$10,386

2027 - 2030 Rural TIP

#### Script:

In FY 2029, we begin with additional sealcoats and pavements markings on all the roadways noted on this slide. These roadways include

On FM 3041 from County Road 4722 to FM 1129

On FM 55 from the Ellis County Line to SH 22

We have two segments of FM 1126 from SH 22 to FM 744 and from FM 744 to SH 31

Two segments of FM 1394 from FM 3194 to FM 641 and from FM 641 to the Freestone County Line

On FM 2452 from SH 31 to FM 709

On FM 2930 from FM 55 to FM 1126

Two segments of FM 3041 from IH 45 to Chambers Creek and from FM 1129 to County Road 4714

And on IH 45 from BI 45F to the BNSF Railroad crossing

### Rural TIP Navarro County Projects FY 2029 (continued)

CSJ	Highway	County	Limits from	Limits to	Project Description	Total Project Cost
0092-06-113	IH 45	Navarro	Chambers Crk	Ellis CL	Sealcoat mainlanes	\$1,378,673
0121-04-030	SH 22	Navarro	FM 667	NW CR 1190	Sealcoat mainlanes	\$1,994,541
0162-10-003	SS 263	Navarro	SH 31	.	Sealcoat mainlanes	\$7,041
0719-01-020	FM 633	Navarro	SH 31	FM 1393	Seal Coat ML	\$418,865
2682-01-021	FM 2555	Navarro	FM 709	West Park Row In Corsicana	Rehabilitate Existing Roadway and add Shoulders	\$7,567,741



2027 – 2030 Rural TIP

#### Script:

Continuing in FY 29 we have sealcoats on IH 45 from Chambers Creek to the Ellis County Line

On SH 22 from FM 667 to Northwest county road 1190

On State Spur 263 at SH 31

On FM 633 from SH 31 to FM 1393

And lastly, we will rehabilitate FM 2555 and add shoulders from FM 709 to West Park Row in Corsicana.

### Rural TIP Navarro County Projects 2030

CSJ	Highway	County	Limits from	Limits to	Project Description	Total Project Cost
0719-02-034	FM 1129	Navarro	FM 85	FM 636	Rehabilitate existing roadway and add shoulders	\$18,350,297
0719-02-035	FM 1129	Navarro	FM 636	SH 31	Rehabilitate existing roadway and add shoulders	\$19,340,969
3325-01-016	FM 3243	Navarro	Navarro Road	US 287	Seal coat and Pavement Markings	\$155,293
3227-01-013	FM 639	Navarro	FM 55	End of Maintenance	Seal Coat and Pavement Markings	\$166,112
0162-04-065	BS 31D	Navarro	SH0031/BS031D Split	0.477 MI W of FM 2555	Full depth repair and Overlay	\$328,431
0995-02-010	FM 739	Navarro	IH 45 Frontage Road	US 287	Restore existing pavement and add shoulders	\$7,005,963



2027 – 2030 Rural TIP

#### Script:

In FY 2030

We will rehabilitate FM 1129 and add shoulders from FM 85 to FM 636 and from FM 636 to State Highway 31. On FM 3243 from Navarro Road to US 287 we will be doing a Seal coat and adding Pavement Markings On FM 639 From FM 55 to the End of Maintenance we will be doing a Seal Coat and adding Pavement Markings On BS 31D from the SH 31/BS 31D Split to West of FM 2555 we will be doing a Full depth repair and Overlay And lastly, On FM 739 from IH 45 Frontage Road to US 287 we will be restoring the existing pavement and adding shoulders

## Rural TIP Navarro County Future Projects

LEGEND  
— FUTURE PROJECTS



2027 - 2030 Rural TIP

### Script:

This map identifies additional planning projects for Navarro County. These projects are not included in the 2027-2030 Rural TIP at this time. When funding is identified and the project design plans have been completed, these projects will be included in a future program. This map, as well as the project details list on the next slide, are also available on the meeting website for review.

### Rural TIP Navarro County Future Projects


CSJ	Highway	County	Limits from	Limits to	Project Description	Total Project Cost
0162-11-005	SH 31	Navarro	BS 31D West	BS 31D East	Seal Coat	\$ 1,885,635.00
1522-01-014	FM 1603	Navarro	IH 45	FM 1129	Sealcoat mainlanes	\$ 579,845.35
0999-01-050	FM 641	Navarro	FM 1394	SH 14	Sealcoat	\$ 100,000.00
3090-01-016	FM 3041	Navarro	At Chambers Creek	-	Bridge Replacement	\$ 4,751,795.88
0122-01-045	US 287	Navarro	IH 45	SE CR 3010	Widen and Reconstruct 2 Lane Rural to 4 Lane Urban	\$73,649,066.40
0122-01-049	US 287	Navarro	At Lake Halbert Bridge	.	Replace the existing 2 lane rural bridge to a 4 lane divided bridge	\$12,093,231.85



2027 – 2030 Rural TIP

**Script:**

Again, We'd like to reiterate that these projects are provided for informational purpose only and they are not included in the 2027-2030 program at this time.


 Connecting you with Texas.

## Funding

**The Rural TIP is a fiscally constrained list of projects that functions as a budgeting tool for our district.**

Funds can come from:

- **Federal Government**
  - **Majority through** the Federal Highway and Transit Administrations
- **State**
  - **Majority through** TxDOT's Unified Transportation Program funding categories
- **Region**
- **Local**



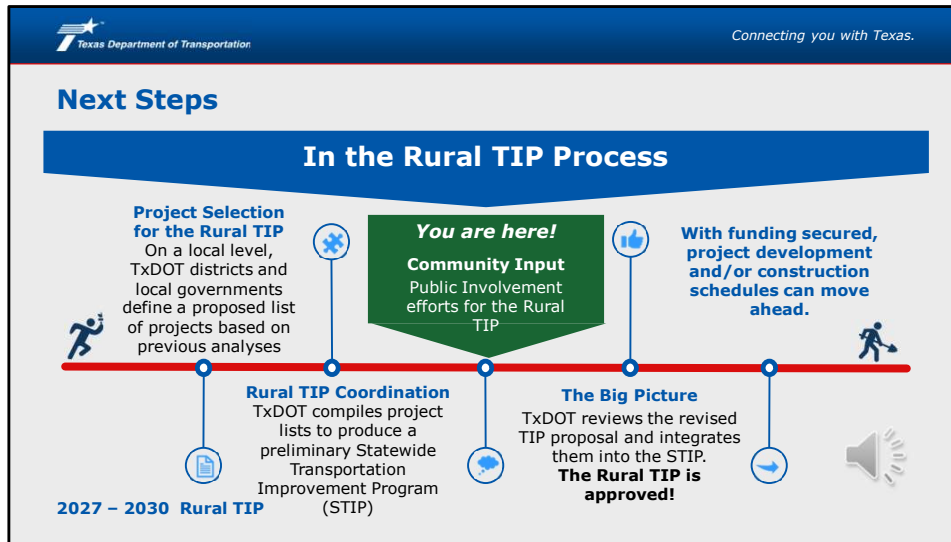
[2027 – 2030 Rural TIP](#)

**Script:**

The Rural TIP functions as a budget list for the District. Therefore, it is fiscally constrained. Like the budget of a household, the Rural TIP has to be realistic about the amount of money available to covers all the needs. Frequently, we identify more improvements than we have money to implement. This means prioritizing according to those items that are most necessary.

We've discussed the list of projects but, where is the money coming from? Funds for these improvements can come from multiple sources:

The Federal Government can be a source of funding. Through the establishment of the Infrastructure Investment and Jobs Act (IIJA), the federal government allocates these funds through the processes established by the Federal Highway and Transit Administrations. The state or TxDOT can be a source of funding. Like the Federal Government, TxDOT also allocates a section of our budget for these projects through the Unified Transportation Program's 12 funding categories. In addition to the federal and state government, the Region can be a source of funding through regional entities that allocate funding to certain transportation projects. And local governments can also be a source of funding. Once the need has been identified and the number of federal monies has been defined, the Rural TIP helps local governments assess the funding requirements to match those of the federal and state government and their capacity to meet them.




**Script**

After reviewing the projects in the Rural TIP, you might ask, “What’s Next”?

The timeline above illustrates the Rural TIP process and where we are right now. Once your comments have been collected and considered, the District will provide TxDOT with a revised Rural TIP for approval and integration into the Statewide document.


The Statewide Transportation Improvement Program consists of the Rural TIP’s of all of the 25 TxDOT districts in the state, as well as, the Metro TIP’s from all the MPOs. The timeline shows where the Rural TIP process fits into this larger effort. Once the STIP is approved by the Federal government, everyone’s projects are funded and become one step closer to getting constructed.

 Connecting you with Texas.

## Next Steps (Continued)

### How to provide comments:

1. Go to [www.KeepItMovingDallas/RTIP](http://www.KeepItMovingDallas/RTIP) and click the **Comment link**
2. **Mail a comment to:**  
Texas Department of Transportation  
Dallas District, Attn: Rural TIP  
4777 E. Highway 80 Mesquite, TX 75150-6643
3. **Or email a comment to:**  
Tamelia.Spillman@txdot.gov, Attention: Rural TIP

Remember to submit your comments by May 4, 2026, to be included in the official summary of this meeting. 

**2027 – 2030 Rural TIP**

### Script:

Now that you are familiar with the Program, we want to hear what you think. You can submit your comments three different ways:

- You can access the link on the meeting website at [www.KeepItMovingDallas/RTIP](http://www.KeepItMovingDallas/RTIP).
- You can make a comment through traditional mail sent to our district office at 4777 East Highway 80, Mesquite, TX 75150 addressed it to the Texas Department of Transportation Dallas District Attention Rural TIP
- Or you can email your comments to: [Tamelia.Spillman@txdot.gov](mailto:Tamelia.Spillman@txdot.gov), using a subject line of Attention: Rural TIP

Comments must be postmarked or otherwise received by May 4th, 2026. So please make sure to send your comments before that date.

This presentation and additional meeting materials are available online and will remain available until 11:59

pm, May 4th, 2026. Thank you for your time today!