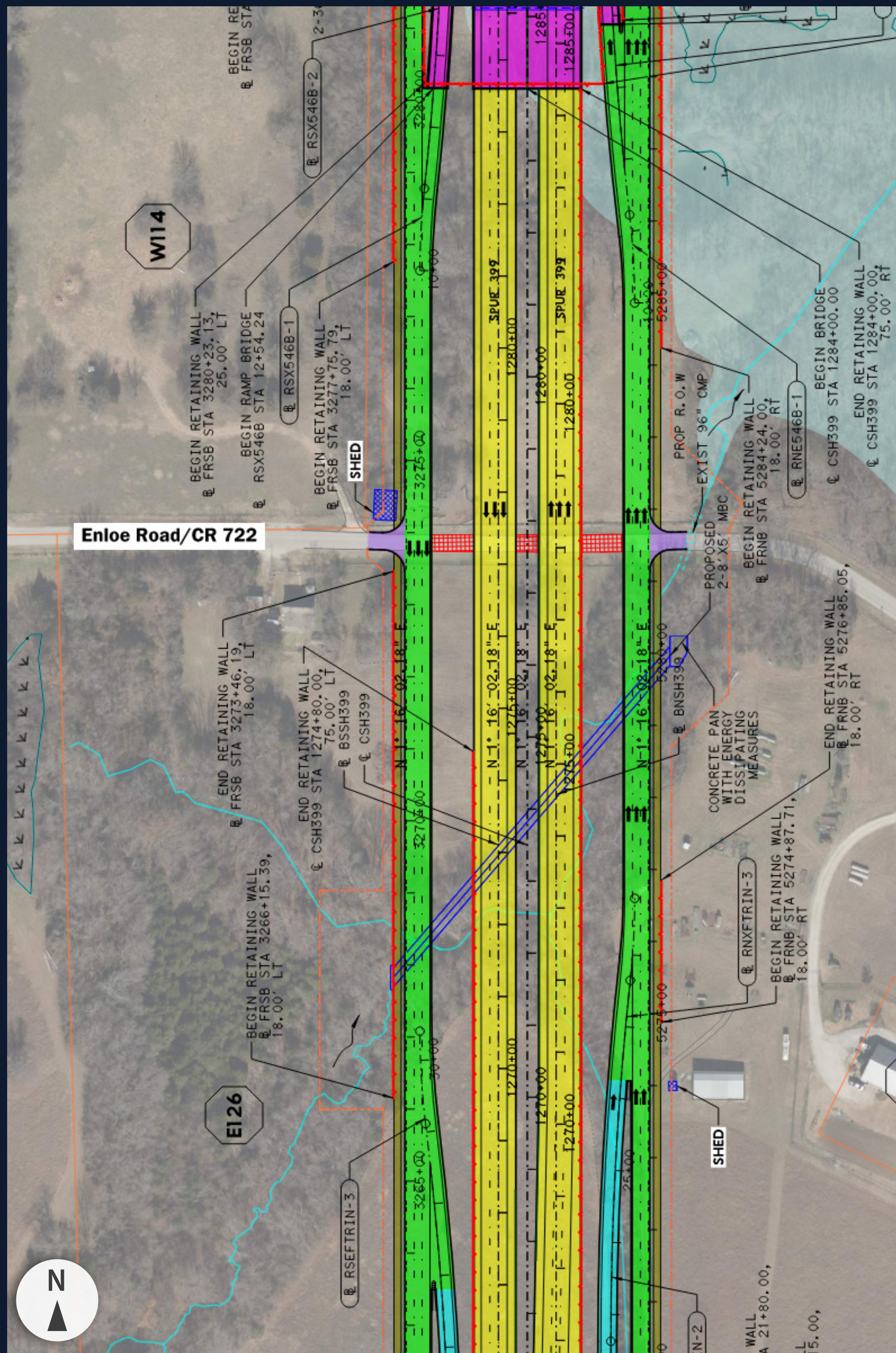


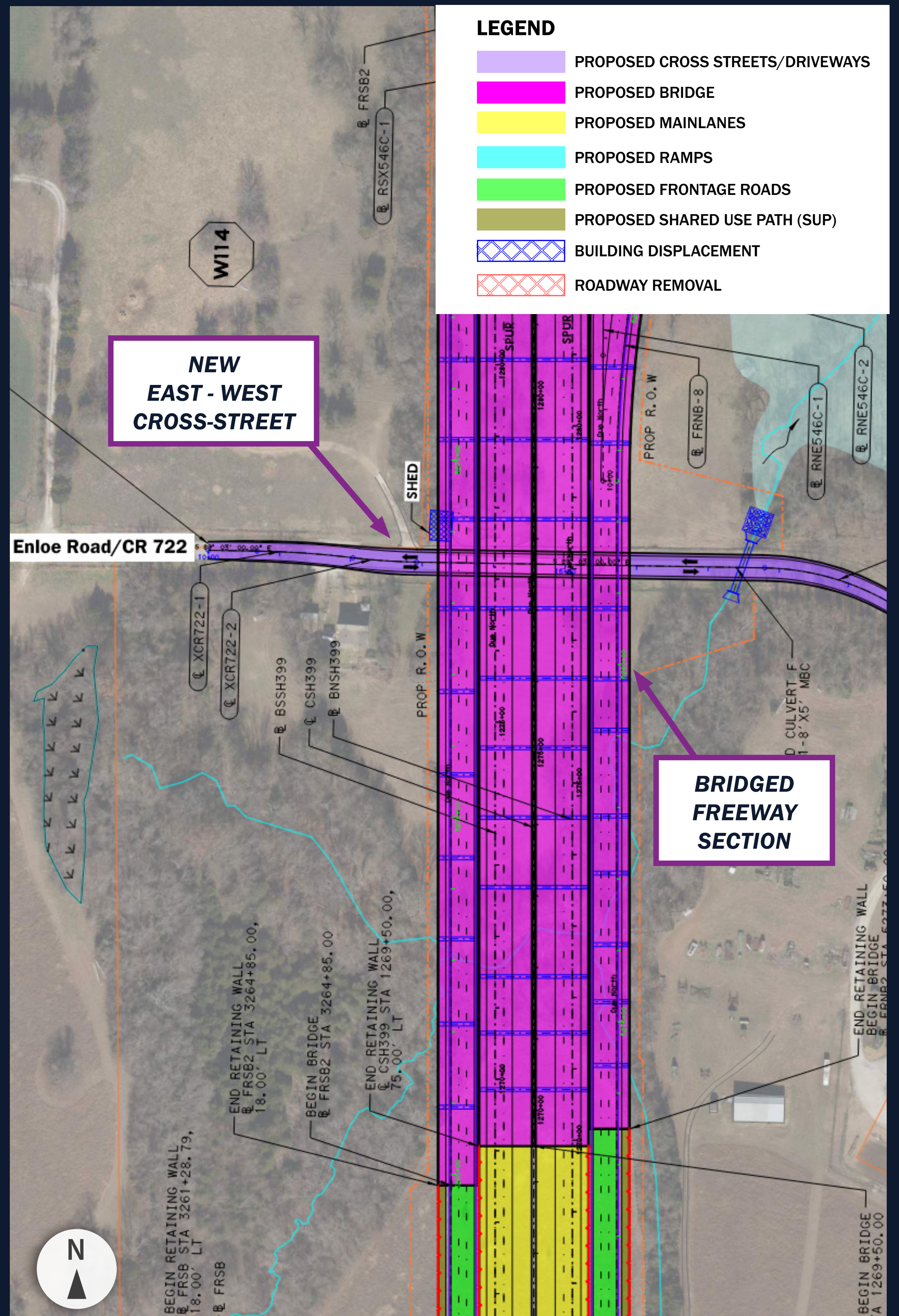


MINOR DESIGN UPDATES UNDER CONSIDERATION FOR FINAL DESIGN

TxDOT is considering design updates to the plans you see on the schematic roll plots. Design updates will be made after this Public Hearing in consideration of public comments received and included in the FEIS. The information below details a change under consideration for the project's final design.



PUBLIC HEARING SCHEMATIC



PROPOSED DESIGN FOR FEIS

NEW EAST-WEST CONNECTION

In response to public comments expressing concern over potential impacts to the Enloe family farm property (shown left), TxDOT performed intensive surveys and archaeological shovel tests as an added measure of due diligence. Findings indicated that the Enloe Property did not meet the requirements for inclusion in the National Register of Historic Places.

To accommodate requests from the Enloe family for improved east-west connectivity, TxDOT extended the elevated section of freeway to provide a crossing below the freeway.