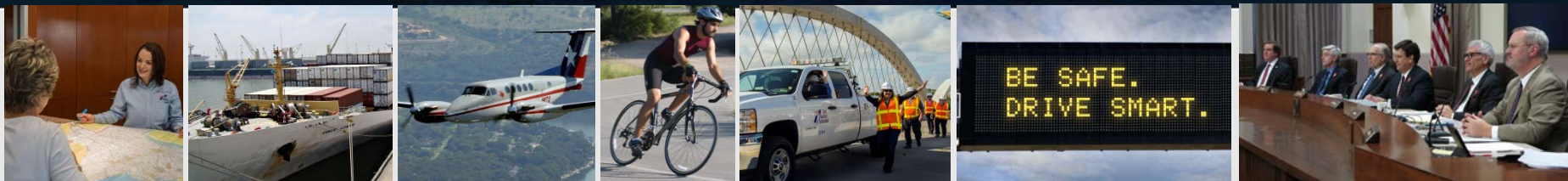




TEXAS DEPARTMENT OF TRANSPORTATION



DISTRICT BICYCLE PROGRAM

TxDOT Dallas-District Public Hearing
Bicycle Use on the State Highway System



June 21st, 2016

Public Hearing Agenda

1

▪ **Introduction**

- Sandra J. Williams
Environmental Specialist
Dallas District Bicycle and Pedestrian Coordinator

2

▪ **State Bicycle Program**

- Teri Kaplan
Statewide Bicycle and Pedestrian Coordinator
TxDOT Transportation Alternatives Program (TAP) Program Manager

3

▪ **Regional Bicycle Programs and Projects**

- Kevin Kokes, AICP, LEED AP BD+C
Principal Transportation Planner

4

▪ **District Bicycle Program**

- Sandra J. Williams

5

▪ **10-minute Recess**

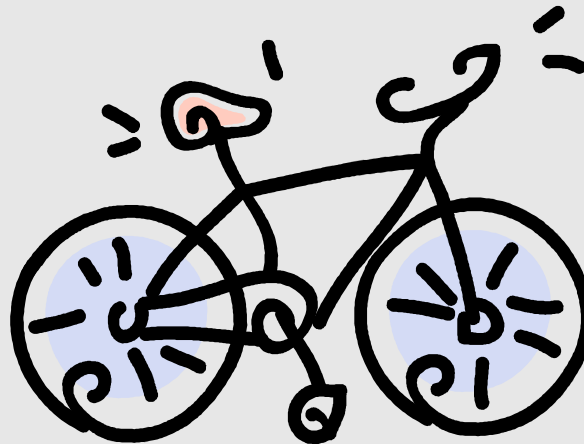
6

▪ **Opportunity for Public Comment**

- Sandra J. Williams

Purpose of the Public Hearing

The purpose of the public hearing is to provide information on bicycle TxDOT Dallas District plans and programs & to receive public comments.



Planning and Designing Bicycle Facilities

■ Connectivity

– Bicycle Master Plan

- Adopted by City Council, Regional MPO, local commission, and/or Texas Transportation Commission
- Generally identifies preferred bicycle route(s), potential deficiencies, and future planned bicycle facilities

■ Standards and Guidelines

– State Law – Texas Transportation Code

– AASHTO

- Guide for the Development of Bicycle Facilities (2012)

– TxMUTCD (2011)

- Pavement Markings and Signage



Texas Transportation Code, Title 7, Subtitle C

SUBCHAPTER B. REGULATION OF OPERATION

Sec. 551.101. RIGHTS AND DUTIES.

(a) A person operating a bicycle has the rights and duties applicable to a driver operating a vehicle under this subtitle, unless:

- (1) a provision of this chapter alters a right or duty; or
- (2) a right or duty applicable to a driver operating a vehicle cannot by its nature apply to a person operating a bicycle.

(b) A parent of a child or a guardian of a ward may not knowingly permit the child or ward to violate this subtitle.

Texas Transportation Code, Title 7, Subtitle C - continued

Sec. 551.103. OPERATION ON ROADWAY.

(a) Except as provided by Subsection (b), a person operating a bicycle on a roadway who is moving slower than the other traffic on the roadway shall ride as near as practicable to the right curb or edge of the roadway, unless:

(1) the person is passing another vehicle moving in the same direction;

(2) the person is preparing to turn left at an intersection or onto a private road or driveway;

(3) a condition on or of the roadway, including a fixed or moving object, parked or moving vehicle, pedestrian, animal, or surface hazard prevents the person from safely riding next to the right curb or edge of the roadway; or

(4) the person is operating a bicycle in an outside lane that is:

(A) less than 14 feet in width and does not have a designated bicycle lane adjacent to that lane; or

(B) too narrow for a bicycle and a motor vehicle to safely travel side by side.

Guidelines Emphasizing Bicycle & Ped. Accommodations

- Construction projects within existing right-of-way and where scope of work is limited to existing typical cross section:
 - Remove barriers to better accommodate bicyclist and pedestrians.
 - As part of resurfacing, restripe a roadway project to provide a 14 foot outside lane wherever practical.
- Construction projects within existing right-of-way and where scope of work involves pavement widening:
 - Provide 14-foot-wide outside lane or 5-foot-wide designated bicycle lane.
 - Provide ADA compliant sidewalks and curb ramps.



TxDOT's Policy - continued

■ Full Reconstruction / New Projects

- New ROW acquired
- Follow TxDOT Roadway Design Manual and AASHTO Bicycle Guide:
 - *14-foot-wide outside lane or 5-foot-wide designated bicycle lane.*
 - *Pedestrian accommodations designed to meet TAS / ADAAG requirements.*
 - *6 foot median width for pedestrian refuge (PROWAG), wherever possible.*



AASHTO Bicycle Guide (2012)

- Consider bicycle accommodations in the planning phase

- **Off-Street Bicycle Accommodations**

- Shared use path (10 foot minimum, 12'ft preferred)
 - Often referred to as **sidepath** when adjacent to roadway

- **On-Street Bicycle Accommodations**

- Shared lane/ Wide outside lane
- Paved Shoulders (Width varies – 4'ft minimum, 6'ft to 12' ft. minimum)
 - Shoulders may be striped as a designated bike lane
- Bike lanes
 - Buffered bike lane
- Cycle Tracks
 - Barrier separated
 - Exclusive use by bicyclist
 - Sidewalk use by pedestrian



NACTO Urban Bikeway Design Guide

■ Cycle Tracks (“Barrier Separated Bikeway”)

- Exclusive Bicycle Facility :
 - One-way protected cycle tracks
 - Raised Cycle Tracks (“Separated Bikeway”)
 - *May be adjacent to sidewalk*
 - Two-way cycle tracks (“Separated Bikeway”)
 - *Consider operational issues at intersections and driveways*



■ Buffered Bike Lanes

- Provide separation from adjacent travel lane and/or parking lane



Bicycle and Pedestrian Accommodation Toolkit

The screenshot shows the Texas Department of Transportation (TxDOT) website. At the top, there's a navigation bar with links like 'A-Z Site Index', 'Contact Us', and 'Español'. Below this is a search bar and a 'Search TxDOT' button. The main header area includes 'Inside TxDOT' and a list of links: 'Get Involved', 'Media Center', 'Projects', 'Forms & Publications', 'Administration', 'Districts', and 'Divisions'. The 'Divisions' link is highlighted, leading to a sidebar menu with various departmental categories like 'Aesthetics', 'Bridges', 'Civil Rights', etc. The main content area is titled 'Bicycle and Pedestrian Accommodation Toolkit'. It contains introductory text about the toolkit's purpose, a list of questions to contact the statewide coordinator, and a table of resources. The table lists various documents and their descriptions, such as 'Bicycle and Pedestrian Accommodation Environmental Handbook' and 'Guidelines Emphasizing Bicycle and Pedestrian Accommodations'. At the bottom, there's a 'Page Options' dropdown and a footer with contact information and social media links.

TEXAS DEPARTMENT OF TRANSPORTATION

Search TxDOT

Driver | Government | Business | Inside TxDOT | Jobs

Inside TxDOT

Get Involved | Media Center | Projects | Forms & Publications | Administration | Districts | Divisions

Divisions

Home > Inside TxDOT > Divisions > Environmental Affairs > Environmental Compliance Toolkits

Legislation and regulations require the inclusion of bicycle and pedestrian policies and projects in transportation plans and project development, and federal policy is increasingly committed to develop and invest in bicycle and walking infrastructure.

Environmental practitioners use these tools to address bicycle and pedestrian accommodation as required by U.S. Department of Transportation (USDOT) and TxDOT policy.

Questions? Contact the statewide coordinator at (512) 374-5235.

You may download the software (Tools and Plug-Ins) needed to access forms or view frequently asked questions (Online Forms FAQs).

Subscribe to updates

Title	Description	Format
Bicycle and Pedestrian Accommodation Environmental Handbook	Outlines the process to comply with both the U.S. Department of Transportation Policy Statement on Bicycle and Pedestrian Accommodation and TxDOT's policy for bicycle and pedestrian accommodation	PDF
Guidelines Emphasizing Bicycle and Pedestrian Accommodations	Explains TxDOT policy to proactively plan, design and construct facilities to safely accommodate bicycles and pedestrians	PDF

Additional Resources

Title	Description	Format
U.S. Department of Transportation Policy Statement on Bicycle and Pedestrian Accommodation Regulations and Recommendations	Details U.S. DOT's support for the development of fully integrated transportation networks with walking and bicycling components, and incorporating these elements into highway designs as part of federal-aid project development	PDF
Public Rights-of-Way Accessibility Guidelines (PROWAG)	Provides guidance to ensure that sidewalks, pedestrian street crossings, pedestrian signal, and other facilities are readily accessible to and usable by pedestrians with disabilities	PDF
Architectural Barriers Texas Accessibility Standards (TAS)	Contains scoping and technical requirements from the Texas Department of Licensing and Regulation's Architectural Barriers Division for accessibility to sites, facilities, buildings and elements by individuals with disabilities	PDF
Texas Administrative Code 16 TAC 68.102	Outlines applicability of pedestrian elements, and explains the sidewalk and curb ramp compliance requirements for transportation projects	PDF
2010 Americans with Disabilities Act (ADA) Standards for Accessible Design	U.S. Department of Justice revised accessibility standards under the ADA, which set minimum requirements for government facilities, public accommodations and commercial facilities to be accessible to individuals with disabilities	PDF
American Association of State Highway and Transportation Officials (AASHTO) Guide for the Development of Bicycle Facilities*	Addresses bicycle-related issues and clarifies the elements needed to make bicycling a viable transportation alternative in all phases of transportation planning, design and construction	PDF
AASHTO Guide for the Planning, Design, and Operation of Pedestrian Facilities*	Provides guidance on the planning, design and operation of pedestrian facilities along streets and highways, and focuses on identifying effective measures for accommodating pedestrians on public rights of way	PDF
TxDOT's Roadway Design Manual (TDM)	Provides guidance in the geometric design of roadway facilities and represents a synthesis of current information and operating practices	PDF
FHWA's Pedestrian Safety Guide for Transit Agencies	Provides a 35-year plan for pedestrian safety research and technology transfer that addresses pedestrian safety concerns and identifies problems and solutions related to the roadway environment	PDF

* Available for purchase from AASHTO

Inside TxDOT

Connect With Us

What We Do

Contact Us

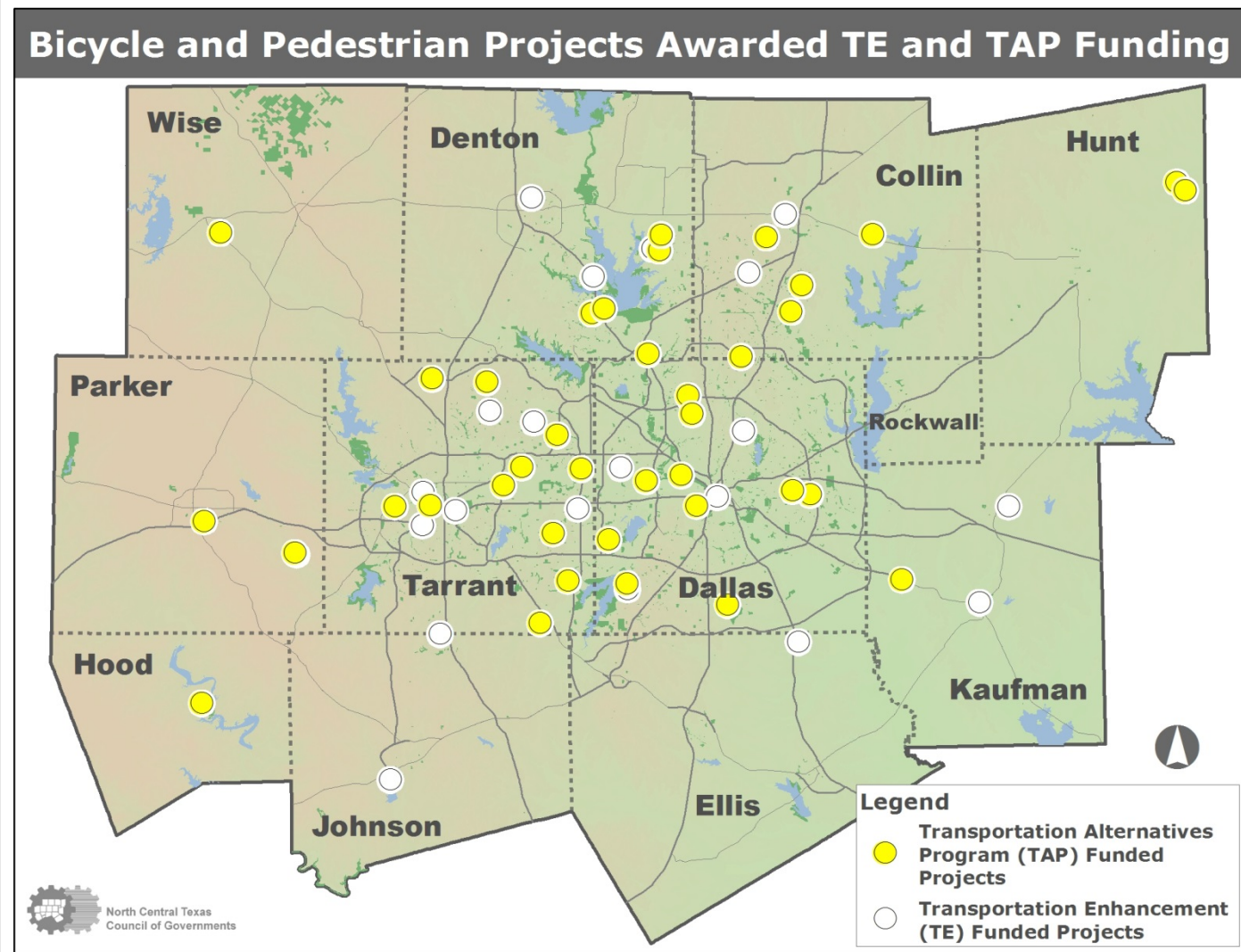
Copyright 2016 • Texas Department of Transportation • All Rights Reserved • Disclaimer • Privacy & Security Policy • Accessibility

You can access the Bicycle and Pedestrian Accommodation Toolkit at:
<http://www.txdot.gov/inside-txdot/division/environmental/compliance-toolkits/bicycle-pedestrian.html>

OR

Type in “*Environmental Compliance Toolkit*” in Google and click on “*Bicycle and Pedestrian Accommodation*”

Bicycle and Pedestrian Projects Awarded TE / TAP Funding



Current Status of Dallas District Transportation Alternatives Program (TAP) Projects – June 1st, 2016

<u>Cty/CSJ #:</u>	<u>Agency</u>	<u>Project Name</u>	<u>Construction</u>	<u>Federal Funding</u>
<u>Collin Co:</u>				
0918-24-212	NCTCOG	Pedestrian Improvements - City of Allen	May-17	\$141,680.00
0918-24-213	NCTCOG	School Ped Safety Enh - McKinney	May-17	\$490,699.00
0918-24-214	NCTCOG	Cottonwood Creek Trail Ext. - City of Plano		\$1,692,407.00
0918-24-215	NCTCOG	Safe Routes to School - City of Princeton		\$440,000.00
0918-24-216	NCTCOG	University Trail Phase II - City of Richardson	May-17	\$588,378.00
<u>Dallas Co: East/West</u>				
0918-47-136	NCTCOG	FM 1382 Hike and Bike Trail-Phase II – City of Cedar Hill	May-17	\$2,999,966.00
0918-47-137	NCTCOG	Northaven Trail - Dallas County May-17		\$2,519,928.00
0918-47-138	NCTCOG	Rosemont Safe Rt. to School-City of Dallas		\$80,000.00
0918-47-139	NCTCOG	TrinitySkyline Trail - City of Dallas	May-17	\$2,989,994.00
0918-47-140	NCTCOG	Brookhaven College Campus intercity Connections - City of Farmers Branch	May-17	\$510,750.00
0918-47-141	NCTCOG	Safe Routes to School - Grand Prairie	May-17	\$390,683.00
0918-47-142	NCTCOG	Delaware Creek Trail Con. - City of Irving	Jun-19	\$1,900,000.00
0918-47-143	NCTCOG	Military Parkway Trail - City of Mesquite	May-17	\$1,950,351.00
0918-47-144	NCTCOG	Skyline Trail - City of Mesquite May-17		\$400,000.00
0918-47-165	TxDOT	Pleasant Run Road Trail - Dallas County	Aug-17	\$2,364,904.00
<u>Denton Co.:</u>				
0918-46-282	NCTCOG	Dudley Branch Trail - City of Carrollton	May-17	\$3,000,008.00
0918-46-283	NCTCOG	Garden Ridge Trail - City of Lewisville	May-17	\$1,518,355.00
0918-46-284	NCTCOG	Brent Elem School Trail - Town of Little Elm	May-17	\$195,000.00
0918-46-285	NCTCOG	Harts Branch Trail - Town of Little Elm	May-17	\$1,720,000.00
0918-46-292	TxDOT	A-Train Bike & Ped Trail Eagle Point -DCTA	Aug-17	\$2,396,699.00
<u>Ellis/Navarro Co:</u>				
0918-18-132	TxDOT	Safe Route Sidewalks-Humphrey - City of Kerens	Aug-18	\$601,242
<u>Kaufman/Rockwall Co:</u>				
0918-11-094	TxDOT	Crandall Safe Routes to School 2015 - City of Crandall	Aug-18	\$489,878

TAP Funded Projects: Dallas District

Location	Project Name	Project Description
Allen	Pedestrian Improvements to Olsen and Beverly Elementary Schools	Sidewalk improvements to complete gaps and provide improved access to Olsen and Beverly Elementary Schools.
Carrollton	Dudley Branch Trail	Approximately 2.1 miles of shared-use path from North Carrollton/Frankford DART Station to West Rosemeade Parkway.
Cedar Hill	FM 1382 Hike and Bike Trail (Phase 2)	Approximately 2 miles of shared-use path along FM 1382 from Cedar Hill State Park entrance north to Joe Pool Lake Overlook entrance.
Crandall	Crandall Safe Routes to School 2015	Sidewalks along Trinity Rd from Angelina Dr to Martin Elementary; along Meadowcreek Dr from Creekside Dr, to 1St St for Wilson Elementary; and Along Lewis St (FM 3039) from 1St St to Crandall Middle School.
Dallas County	Northaven Trail - Phases 2B and 2C	Approximately 4 miles of shared-use path from Midway Road to Denton Drive.
Dallas County	Pleasant Run Road Trail	Construct 3.1 mile long shared-use path on the south side of Pleasant Run Road
Dallas	Rosemont Safe Routes to School Pilot	Preliminary engineering for various safe street pedestrian and bikeway improvements including traffic calming measures in the Rosemont neighborhood generally bounded by Kessler Parkway on the north, Cedar Hill Avenue on the east, West 12th Street on the south, and Mary Cliff Road on the west.

TAP Funded Projects: Dallas District - continued

Location	Project Name	Project Description
Dallas	Trinity Skyline Trail Extension	Approximately 4.7 miles of shared-use path along the Trinity River from Sylvan Avenue west to the Campion Trail in Irving on the north side of SH 356.
Denton County Transportation Authority (DCTA)	A-Train Bike and Pedestrian Trail – Eagle Point Section	Construction of approx. 2.5 mile section of A-Train Rail Trail (Eagle Point Section)
Farmers Branch	Brookhaven College Campus - Intercity Connections	Pedestrian bridge and sidewalk along Marsh Lane and approximately 0.25 mile of on-street bikeway improvements on Rosser Road from IH 635 to Valley View Lane, including signal improvements at the Rosser Road/Valley View Lane intersection.
Grand Prairie	Citywide Safe Routes to Schools Improvements	Sidewalk improvements in various locations in proximity to Lorenzo de Zavala Environmental Science Academy, Jackson Middle School, South Grand Prairie 9th Grade Center, Johnson DAEP, Safe Side City (Child Safety Instruction "Town"), South Grand Prairie High School, Florence Hill Elementary, Moseley Elementary, and Truman Middle Schools.
Irving	Delaware Creek Trail Connector	Approximately 2.25 miles of shared-use path extension from the existing Delaware Creek Trail near the intersection of Senter Road/Senter Valley Road to the Campion Trail in Mountain Creek Preserve.

TAP Funded Projects: Dallas District - continued

Location	Project Name	Project Description
Lewisville	Garden Ridge Trail	Approximately 4.2 miles of shared-use paths, sidewalk, and on-street bike lanes from the North Garden Ridge Boulevard interchange at IH 35E southward to North Valley Parkway and West Main Street.
Little Elm	Brent Elementary School Trail Connection	Approximately 0.5 mile of sidewalk from Witt Road westward around Brent Elementary School to the future Lakefront Trail.
Little Elm	Harts Branch Trail	Approximately 1.51 miles of shared-use path from East Eldorado Parkway to Walker Lane.
McKinney	School Pedestrian Safety Enhancement	Sidewalk improvements in various locations in proximity to Burks Elementary, Caldwell Elementary, Eddins Elementary, Glen Oaks Elementary, Johnson Elementary, McNeil Elementary, Cockrill Middle, Comstock Elementary, Ogle Elementary, Scott Elementary, Sonntag Elementary, and Scoggins Middle Schools.
Mesquite	Military Parkway Trail	Approximately 1.57 miles of shared-use path along Military Parkway from Sam Houston Road to Rodeo Center Boulevard.
Mesquite	Skyline Trail	Shared-use path along South Town East Boulevard from Military Parkway to Skyline Boulevard.
Plano	Cottonwood Creek Trail Extension	Approximately 1.9 miles of shared-use path extension along Cottonwood Creek from the north side of Chaparral Road to Oak Point Park near East Parker Road.

TAP Funded Projects: Dallas District - continued

Location	Project Name	Project Description
Princeton	Safe Routes to Schools	Approximately 0.7 mile of sidewalk along the north side of College Avenue from Community Park to North Second Street, along the north side of McKinney Avenue from North Fourth Street to North Sixth Street, and along the west side of North Sixth Street (FM 1377) to East Willow Lane.
Richardson	University Trail Phase II	Approximately 1 mile of shared-use path along the east side of Waterview Parkway from Drive A to Synergy Park Drive, and portions of the south side of Synergy Park Drive from Waterview Parkway to North Floyd Road.

Current Status of Dallas District State Transportation Enhancement Program (STEP) Projects

June 1st, 2016

<u>Cty/CSJ#</u>	<u>TE#</u>	<u>Project Name</u>	<u>Env Clearance Date</u>	<u>Construction</u>	<u>Federal Funding</u>
Collin Co:					
0918-24-203	STP 2014 (149) TE	On Street Bicycle Treats - McKinney	Pending	Aug-16	\$200,000.00
0918-24-204	STP 2014 (157) TE	Three Cities Trail - Frisco	10/2/2015	Aug-16	\$516,852.00
Dallas Co. East/West:					
0918-45-897	STP 2011 (219) TE	Lake Ridge Pkwy Sidewalks - Cedar Hill	6/29/2012	Aug-12	\$2,058,462.00
0918-47-097	STP 2014 (156) TE	FM 1382 Hike and Bike Trail - Cedar Hill	4/15/2016	Aug-16	\$2,768,137.00
0918-47-098	STP 2014 (150) TE	Velo/So Pac Phase 4A - Dallas County	7/9/2015	Aug-16	\$3,009,217.00
0918-47-099	STP 2014 (094) TE	Rock Island Bike & Ped Facility - Irving	3/29/2016	Aug-16	\$2,070,000.00
1068-04-161	STP 2014 (155) TE	Coombs Creek - City of Dallas	3/28/2014	Mar-13	\$2,000,000.00
0918-45-861	STP 94 (187) TE	McKinney Trolley Phase 2 Extension		Jul-10	\$1,700,000.00
0918-45-898	STP 2011 (220) TE	Traffic Contr Treatments - City of Dallas	1/27/2014	Jun-14	\$709,773.00
Denton Co.:					
0918-46-258	STP 2011 (221) TE	Denton-A-Train Enhancements - Denton	7/9/2013	Mar-14	\$501,422.00
0918-46-259	STP 2011 (222) TE	Lewisville Bicycle Facility - DCTA	3/31/2014	Jul-14	\$2,791,516.00
0918-46-271	STP 2014 (124) TE	Town Center/Beard - Little Elm	Pending	Aug-16	\$1,166,882.00
0918-46-272	STP 2014 (158) TE	Phase Three A-Train Rail Trail - DCTA	Pending	Aug-16	\$1,984,900.00
0918-46-273	STP 2014 (105) TE	Evers Park Bridge & Trail - Denton	Pending	Aug-16	\$1,341,617.00
Ellis/Navarro Co:					
0918-22-152	STP 2014 (088) TE	Yellowjacket Multi-Use Trail - Ferris		Aug-16	\$408,425.00
Kaufman/Rockwall Co.:					
0918-11-085	STP 2014 (087) TE	Terrell Pedestrian Imprvts - Terrell	3/29/2016	Aug-16	\$373,858.00
0173-10-001	STP 2014 (087) TE	SH 34- Continuous illumination - Terrell	7/10/2015	Nov-15	\$450,660.00
0918-11-086	STP 2014 (110) TE	Kaufman DowntownTransp Imprvts	Pending	Aug-16	\$390,900.00

TE Funded Projects: Dallas District

Location	Project Name	Project Description
Cedar Hill	FM 1382 Hike and Bike Trail	Approximate 1.3-mile shared use path along FM 1382 from New Clark Road to the Cedar Hill State Park entrance. Improvements include a 12-foot-wide path, landscaping, and pedestrian amenities.
Dallas	Coombs Creek Trail Extension	Transportation Enhancement funds will assist with project costs for the IH-30 bicycle and pedestrian facilities to be constructed with the Dallas Horseshoe project.
Denton	Evers Park Bridge and Trail Project	Approximate 3-mile trail loop from Evers Park northward to Hercules Lane westward to Nicosia Street and the UNT Discovery campus with connections to the athletic complex and the existing Wildflower/Bird Trail near Riney Road. Improvements include a 12-foot-wide shared use path, pedestrian bridge, and signalized crossing on SH 77.
Ferris	Yellowjacket Multi-Use Trail	Approximate 1/2-mile trail from the IH 45 northbound frontage road eastward along the south side of FM 660 to Ferris Junior High School. Improvements include 10-foot-wide shared use path, crosswalks, and signage.
Frisco	Three Cities Trail	Approximate 1/2-mile extension of the Three Cities Trail from Limestone Quarry Park southward under Sam Rayburn Tollway (SH 121) to Custer Road. Improvements include a 12-foot wide shared use path, landscaping, signage, and pedestrian amenities.

TE Funded Projects: Dallas District - continued

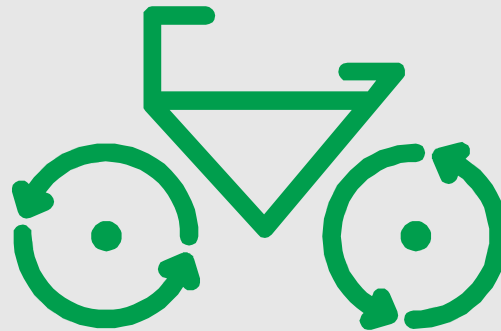
Location	Project Name	Project Description
Irving	Rock Island Bike and Pedestrian Facility	Approximate 2.25-mile bicycle and pedestrian facility along the Trinity Railway Express (TRE) railroad right-of-way from West Irving TRE Station to Irby Lane. Improvements include a 12-foot-wide shared use path, lighting, and landscaping.
Kaufman	Downtown Transportation Improvement Project	Sidewalk improvements around the Kaufman downtown square and along SH 243. Improvements include replacement of sidewalks, curb ramps, railings, and installation of pedestrian signals, and landscape amenities.
Little Elm	Town Center/Beard Park to Witt Road Trail Project	Approximate 4.5-mile extension of an existing trail around the north side of Lake Lewisville from Beard Park (FM 720 and Main Street) east to Witt Road. Improvements include a 12-foot-wide shared use path, pedestrian bridges, and signage.
McKinney	On-Street Bicycle Treatments	Installation of on-street bicycle route signage and markings on various boulevards throughout the city.
Terrell	Pedestrian Improvements along SH 34 and West Grove Street	Installation of pedestrian facilities along SH 34 from College Street to Rose Street; and along West Grove Street from Bowser Street to Rockwall Street. Improvements include lighting along SH 34 and sidewalks and curbs along W. Grove St.

TE Funded Projects: Dallas District - continued

Location	Project Name	Project Description
Dallas County	VeloWay/SoPac Phase 4 A	Approximate 2.5-mile trail extension from the north end of the Katy Trail (Phase IV) at Northwest Highway northward along DART right-of-way to Greenville Avenue. Improvements include a 14-foot-wide shared use path, landscaping, signage, trailheads, and pedestrian amenities.
Denton County Transportation Authority (DCTA)	Phase Three A-train Rail Trail	Approximate 1.5-mile extension of the A-train Rail Trail along railroad right-of-way from Swisher Road in Lake Dallas south to Kelton Road in Hickory Creek. Improvements include a 10-foot-wide shared use path, landscaping and signage.

TxDOT - Dallas District Staff

- **Sandra Williams, Environmental Specialist, Advanced Project Development (DAL)**
 - TxDOT Dallas District Bicycle and Pedestrian Coordinator
 - sandra.williams2@txdot.gov
- **Godfrey Sendawula, Transportation Specialist, Advanced Project Development (DAL)**
 - TxDOT Dallas District – Transportation Enhancement Coordinator
 - TxDOT Dallas District – Transportation Alternatives Program Coordinator
 - Godfrey.sendawula@txdot.gov
- **Maher Ghanayem, P.E., Project Manager - Project Delivery (DAL)**
 - TxDOT Dallas District – Transportation Alternatives Program Project Engineering Manager
 - Maher.ghanayem@txdot.gov



10 minute recess

Comment period following recess

Recess

10 Minutes

Public Hearing Comment Period

Please understand that we are not able to respond to your comments at this time.

All comments will be fully considered and addressed in the public hearing summary report.

Mailing Address

TxDOT - Dallas District / APD

Attn: Sandra J Williams

4777 E. Highway 80

Mesquite, Texas 75150-6643

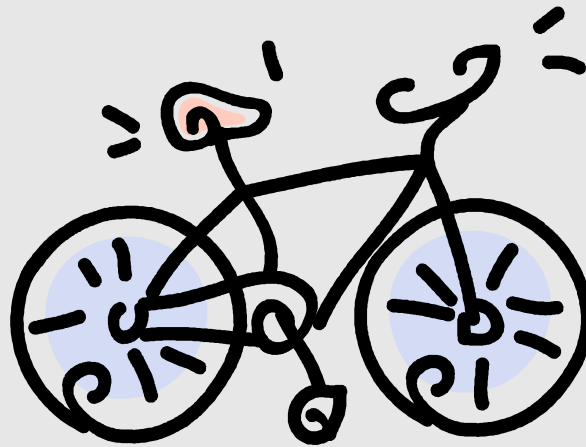
- Written Comments must be post-marked by **Friday, July 1st, 2016**
- <http://www.keepitmovingdallas.com> under **“Upcoming Public Hearing/Meeting”**; and,
- <http://www.txdot.gov/inside-txdot/get-involved/about/hearings-meetings.html> under **“Inside TxDOT Hearings and Meetings Schedule”**.

**So that everyone may speak,
your comments will be
limited to three (3) minutes**

- So that everyone may speak, please limit your comments to three (3) minutes



Thank you for your interest and input!



Texas Department of Transportation