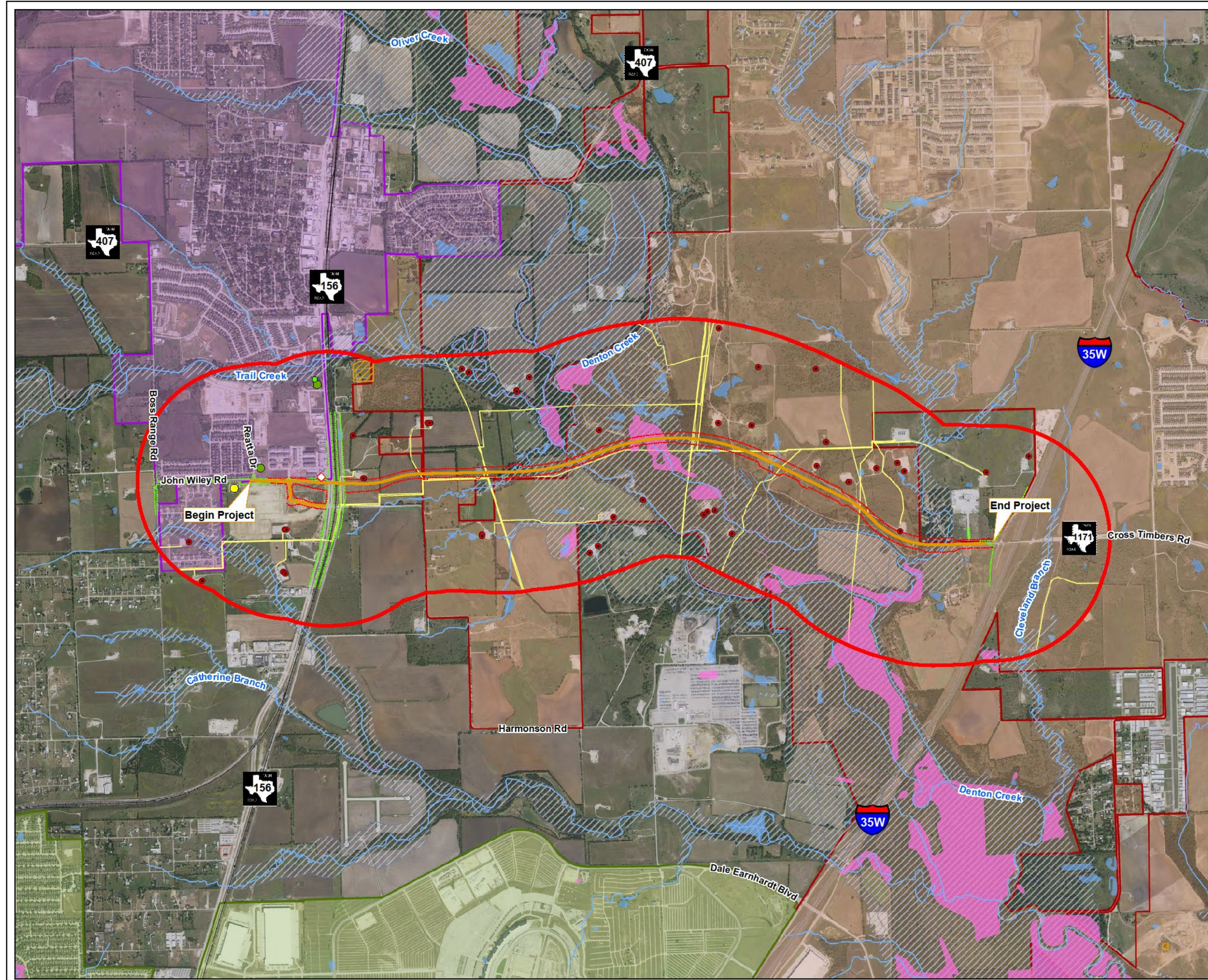


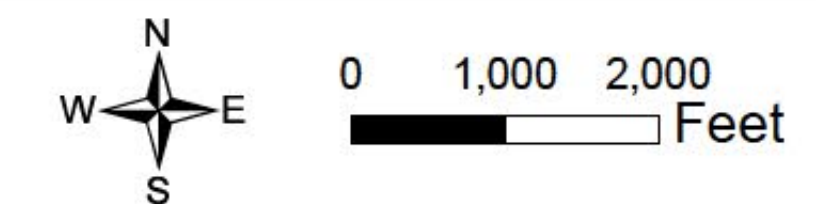
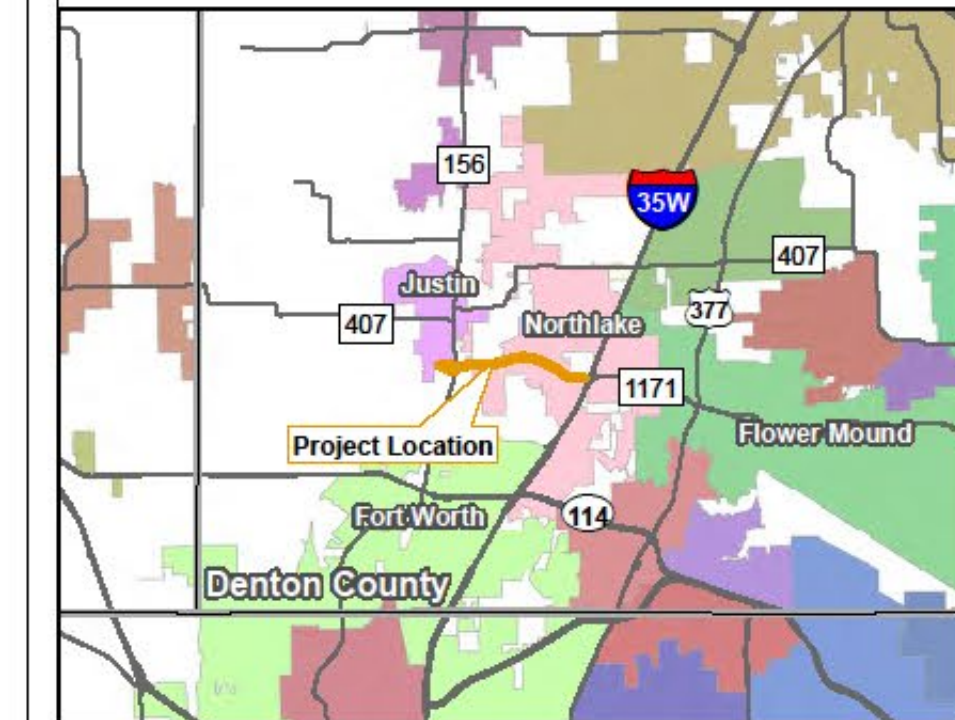
# Environmental Constraints Map



## Constraints Map

### FM 1171

From West of FM 156  
To I-35W  
Denton County, Texas  
CSJ: 1311-01-055



### Legend

- Project Location
- Existing Right of Way
- Proposed Right of Way
- Half-Mile Study Area
- Place of Worship
- Park
- Historical Marker (THC)
- Cemetery (THC)
- City of Justin (TxDOT)
- Town of Northlake (TxDOT)
- City of Fort Worth (TxDOT)
- ◇ Petroleum Storage Tank (TCEQ)
- Active Well (TRRC)
- Pipeline (TRRC)
- +—+—+— Railroad (TxDOT)
- Stream (USGS)
- Pond/Lake (USGS)
- Potential Wetland (USFWS)
- 100-Year Floodplain (FEMA)

Sources: FEMA (2011); TCEQ (2023); THC (2023); TNRIS (2020); TRRC (2022); TxDOT (2023); USFWS (2022); USGS (2023)