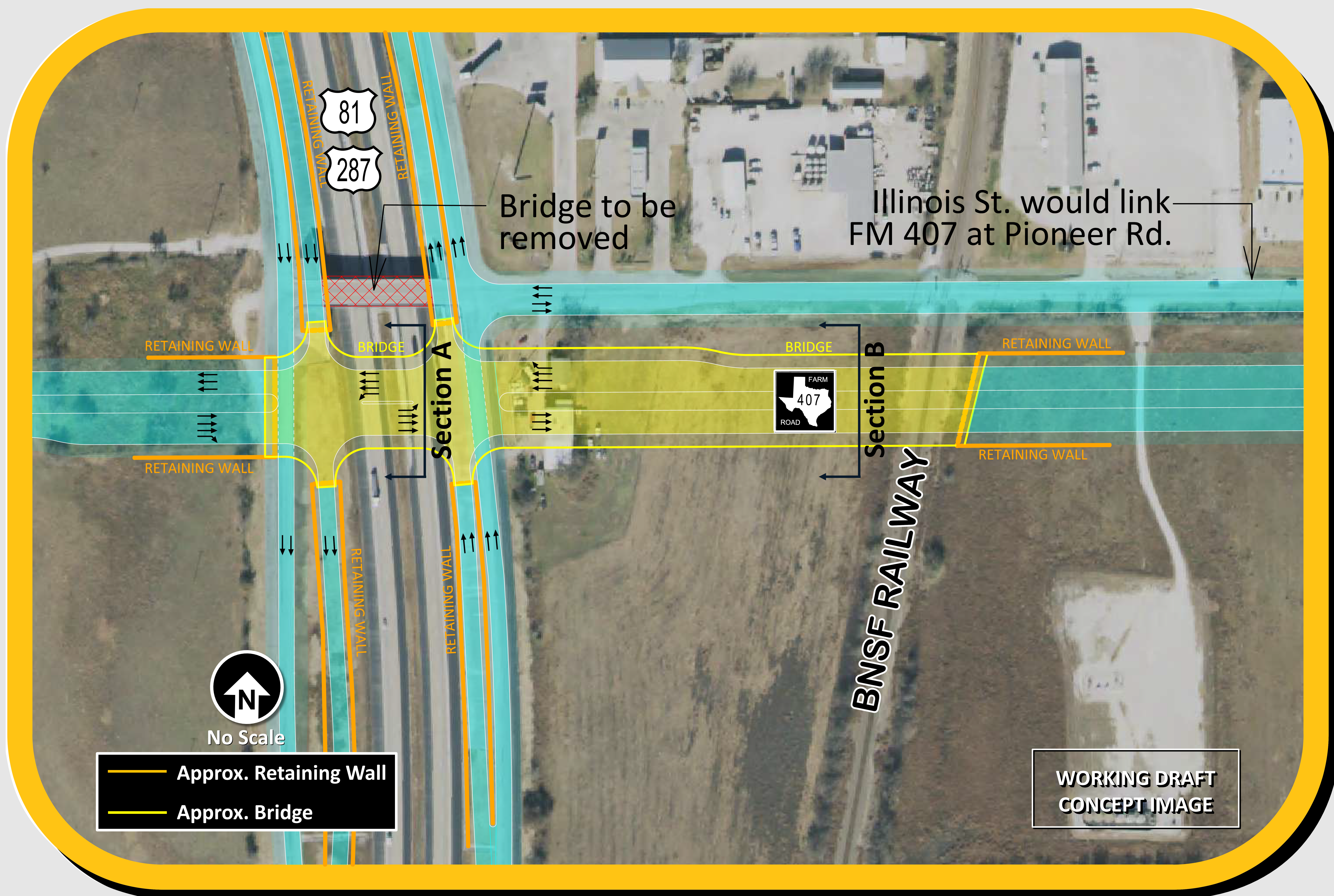


# “Elevated Intersections” Interchange



## LONG-RANGE OPTION | FM 407 / US 287 / BNSF Railway Interchange Concept



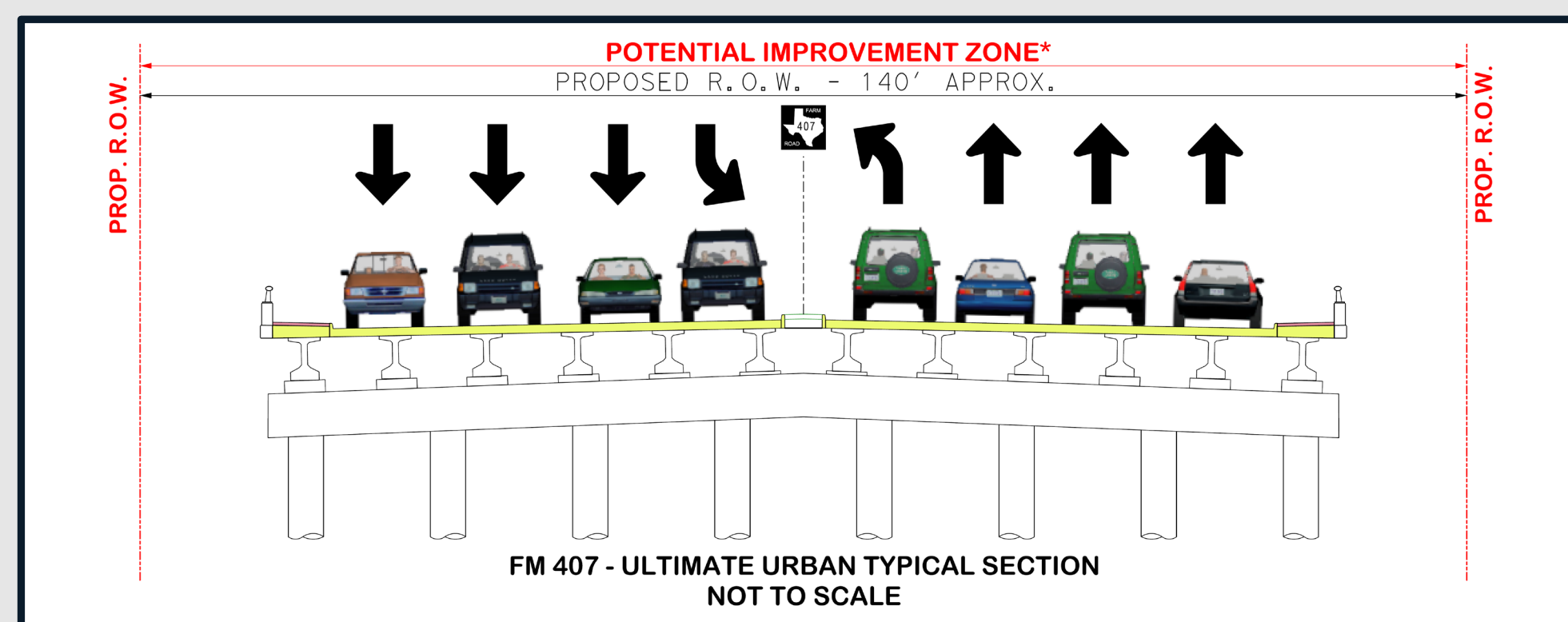
### --- PROS ---

- FM 407 overpasses the Railway; free-flow travel for Commuters & Emergency Vehicles
- Smaller Land Impact Footprint, as compared to other Bridge options
- Maintains existing US 287 Frontage Road access via Illinois Street

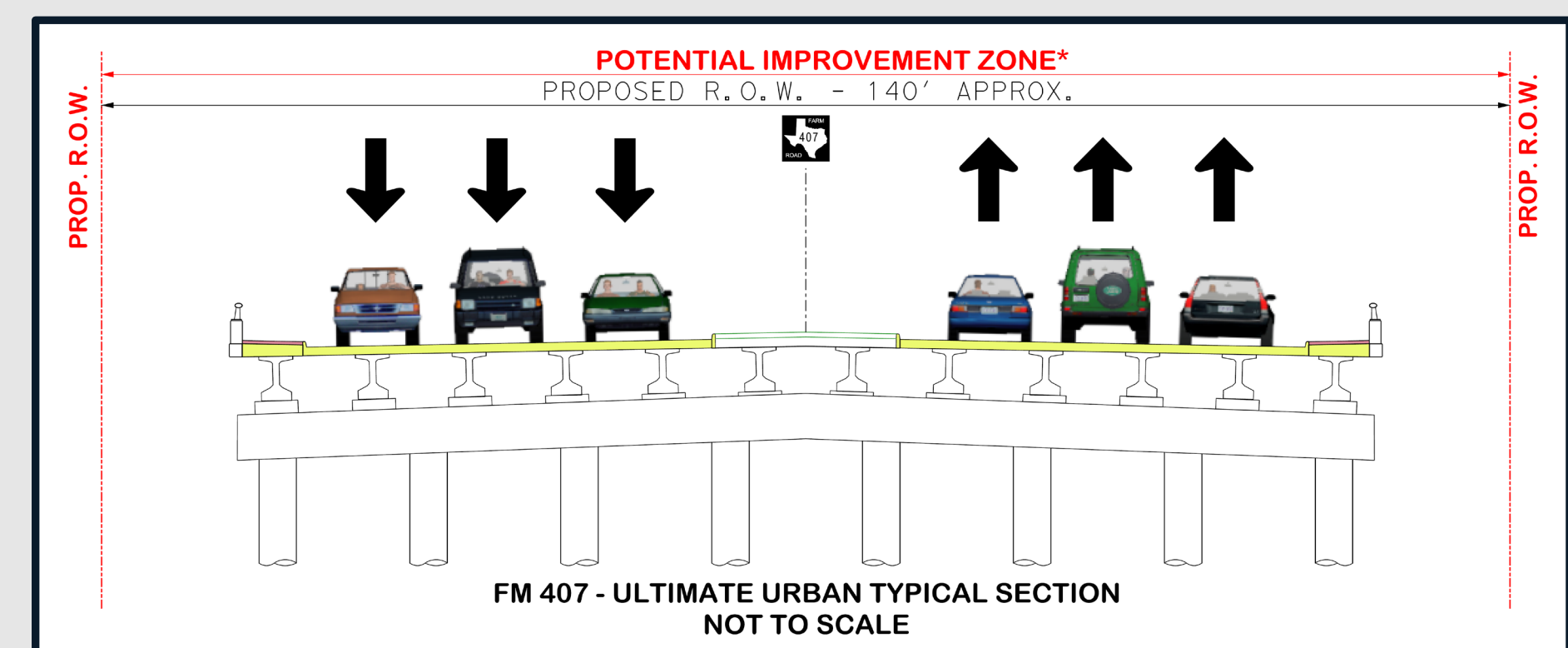
### --- CONS ---

- Land Impacts / Land Acquisition
- Elevated Structures (Bridges)
- Potential US 287 Ramp Adjustments
- Illinois Street remains at-grade with the Railway; Railway Signals & Crossing upgrades required
- Increased Cost

Typical Section A Concept



Typical Section B Concept



\* Potential Roadway Land Acquisition and Construction Zone; specific / final dimensions would be determined during TxDOT's future FM 407 Roadway Schematic Design, Environmental Analyses, and Public Involvement Phase