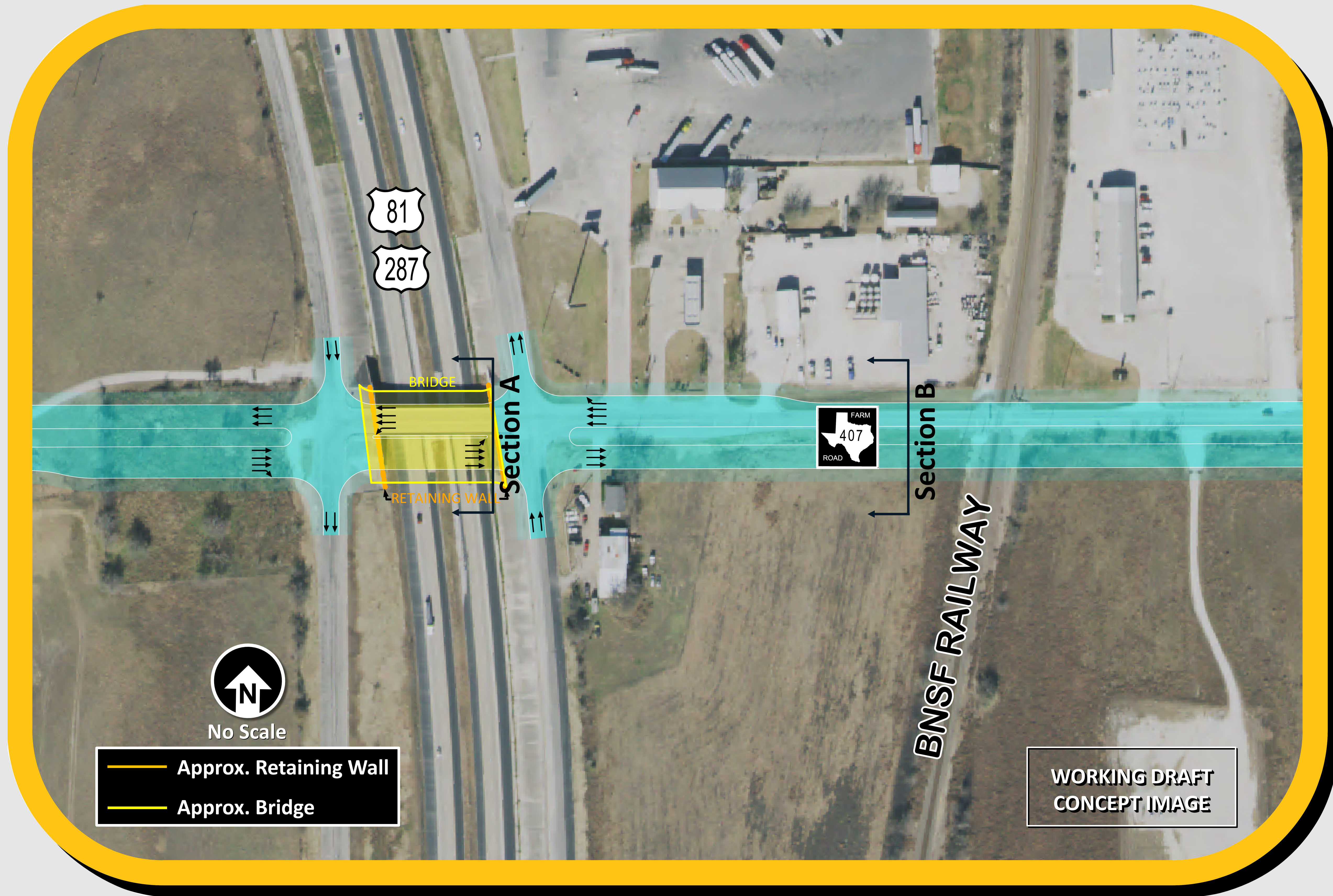


Surface Street Intersection



LONG-RANGE OPTION | FM 407 / US 287 / BNSF Railway Interchange Concept



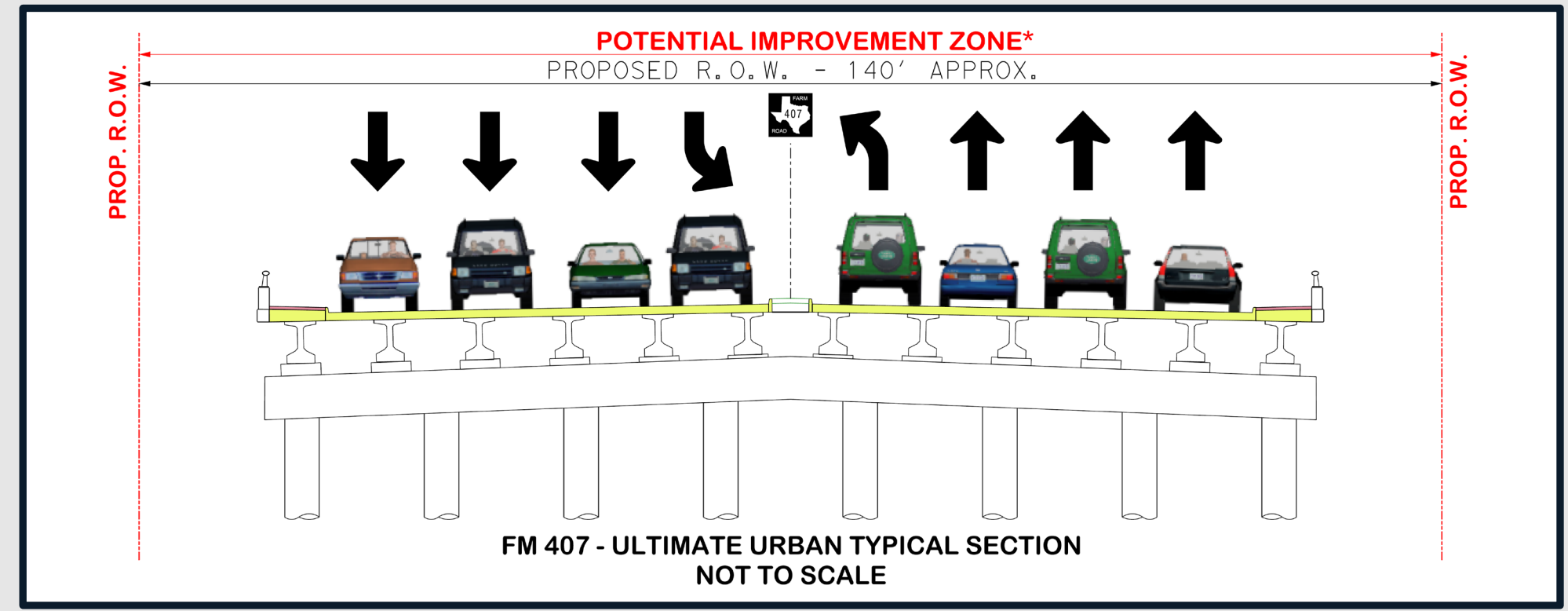
--- PROS ---

- Limited Structure (Bridge) and smaller Land Impact Footprint, as compared to interchange options
- Maintains existing US 287 Frontage Road access via Illinois Street
- Least Cost Option

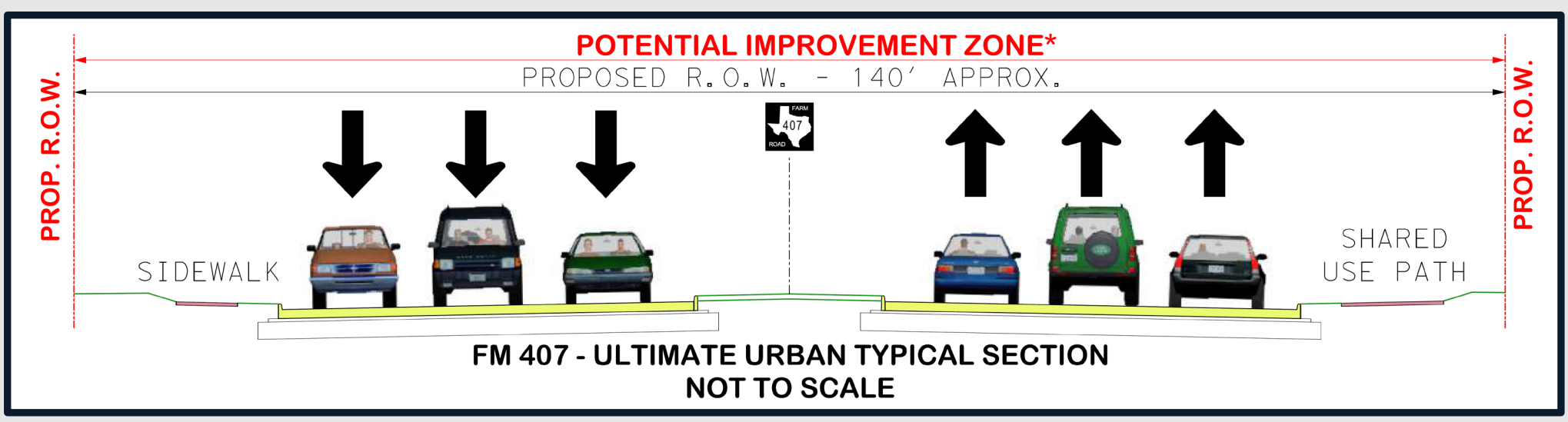
--- CONS ---

- Land Impacts / Land Acquisition
- FM 407 crosses the Railway at-grade; Commuters & Emergency Vehicles are blocked / delayed by BNSF Railway Trains
- Truck Traffic continues to utilize Illinois Street
- Illinois Street remains at-grade with the Railway; Railway Signals & Crossing upgrades required
- Oil / Gas Well impact if FM 407 is extended west of US 81 / 287

Typical Section A Concept



Typical Section B Concept



* Potential Roadway Land Acquisition and Construction Zone; specific / final dimensions would be determined during TxDOT's future FM 407 Roadway Schematic Design, Environmental Analyses, and Public Involvement Phase