

TEXAS DEPARTMENT OF
TRANSPORTATION

DALLAS DISTRICT
WILLIAM HALE, P.E.
DISTRICT ENGINEER

DESIGN SCHEMATIC

FM 720

CSJ: 1567-01-025
URBAN COLLECTOR
FROM: EL DORADO PKWY
TO: US 380

DESIGN SPEED = 40 MI/HR
PROJECT LENGTH: 4.686 MI

OCTOBER 2010
DENTON COUNTY

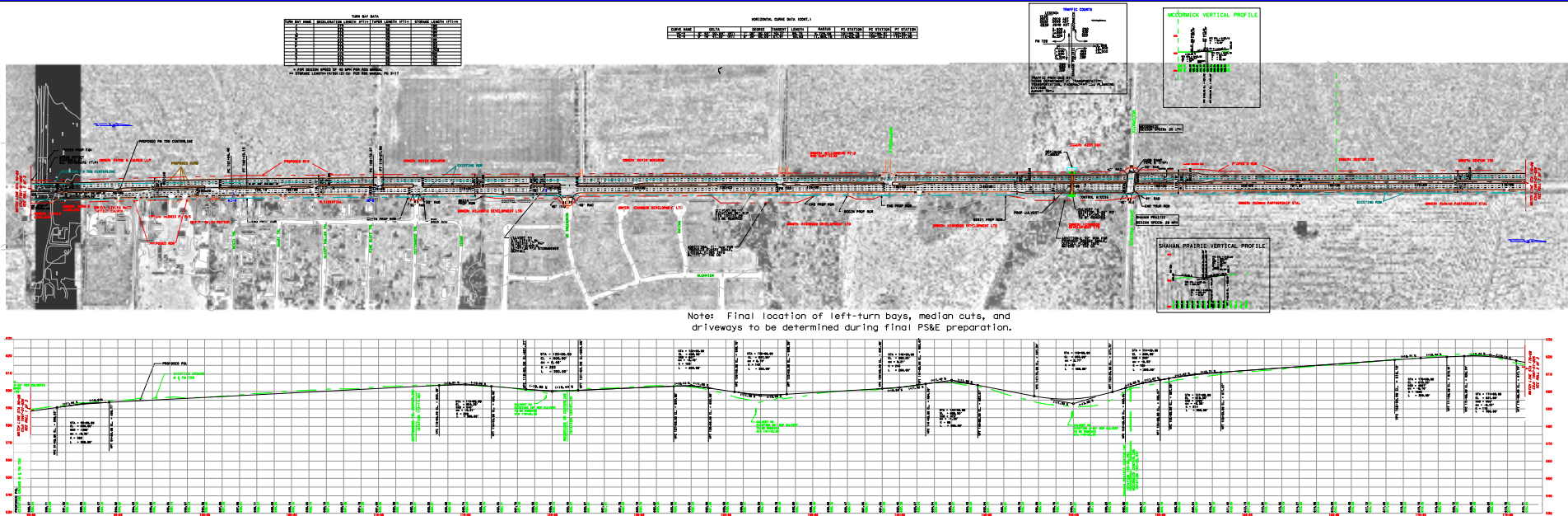
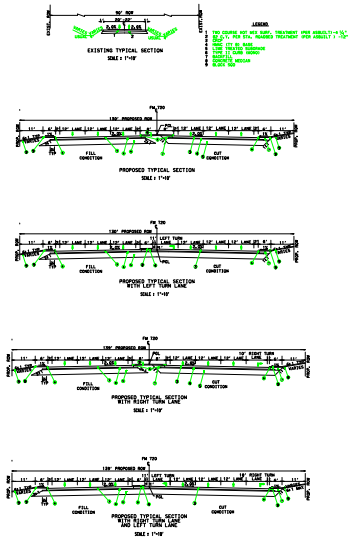
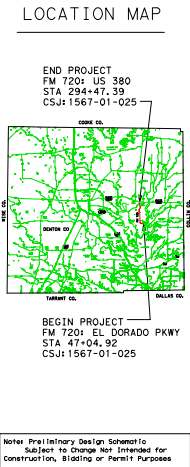
SCALE: HORIZONTAL 1"=100'
VERTICAL 1"=10'

ROLL 2 OF 3

NOT A
BIDDING
DOCUMENT

ENGINEER JAVIER G. CANTU
P.E. NUMBER 101989
DATE 10/25/2010

SIGNATURE



TEXAS DEPARTMENT OF
TRANSPORTATION

DALLAS DISTRICT
WILLIAM HALE, P.E.
DISTRICT ENGINEER

DESIGN SCHEMATIC

FM 720

CSJ: 1567-01-025
URBAN COLLECTOR
FROM: EL DORADO PKWY
TO: US 380

DESIGN SPEED = 40 MI/HR
PROJECT LENGTH: 4.686 MI

OCTOBER 2010
DENTON COUNTY

SCALE: HORIZONTAL 1"=100'
VERTICAL 1"=10'

ROLL 2 OF 3

NOT A
BIDDING
DOCUMENT

ENGINEER JAVIER G. CANTU
P.E. NUMBER 101989
DATE 10/25/2010

SIGNATURE

© 2011 by Texas Department of Transportation all rights reserved