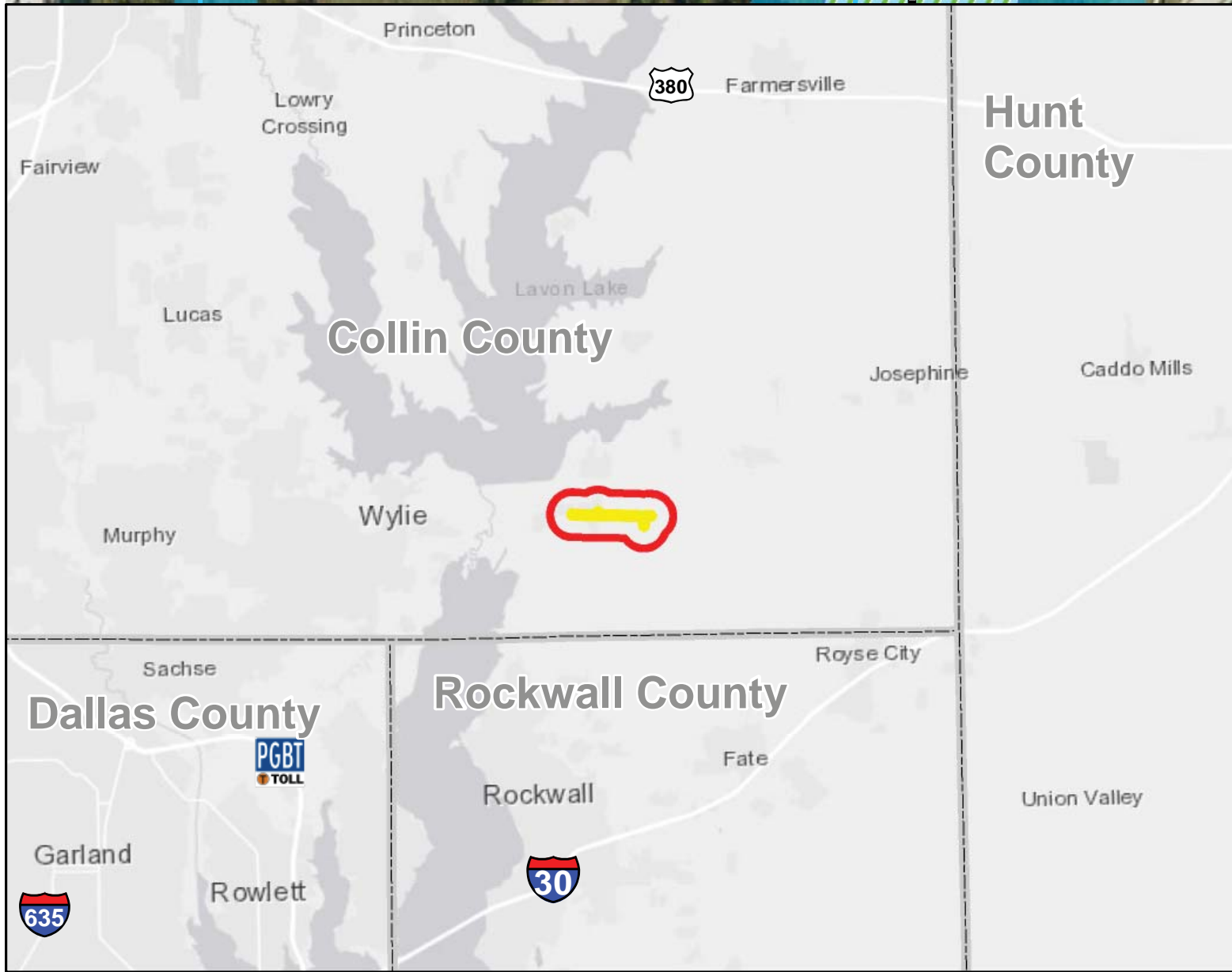
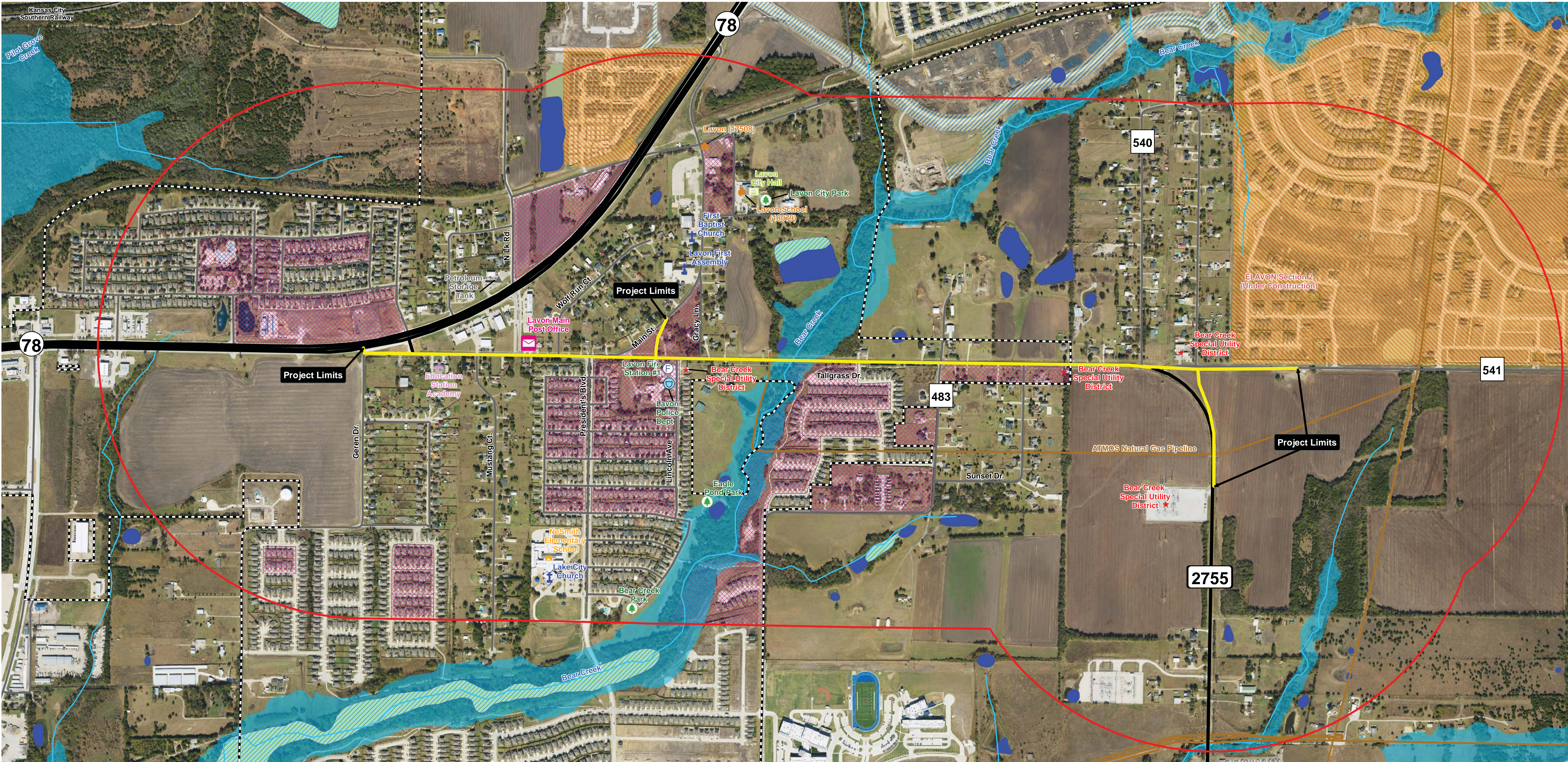


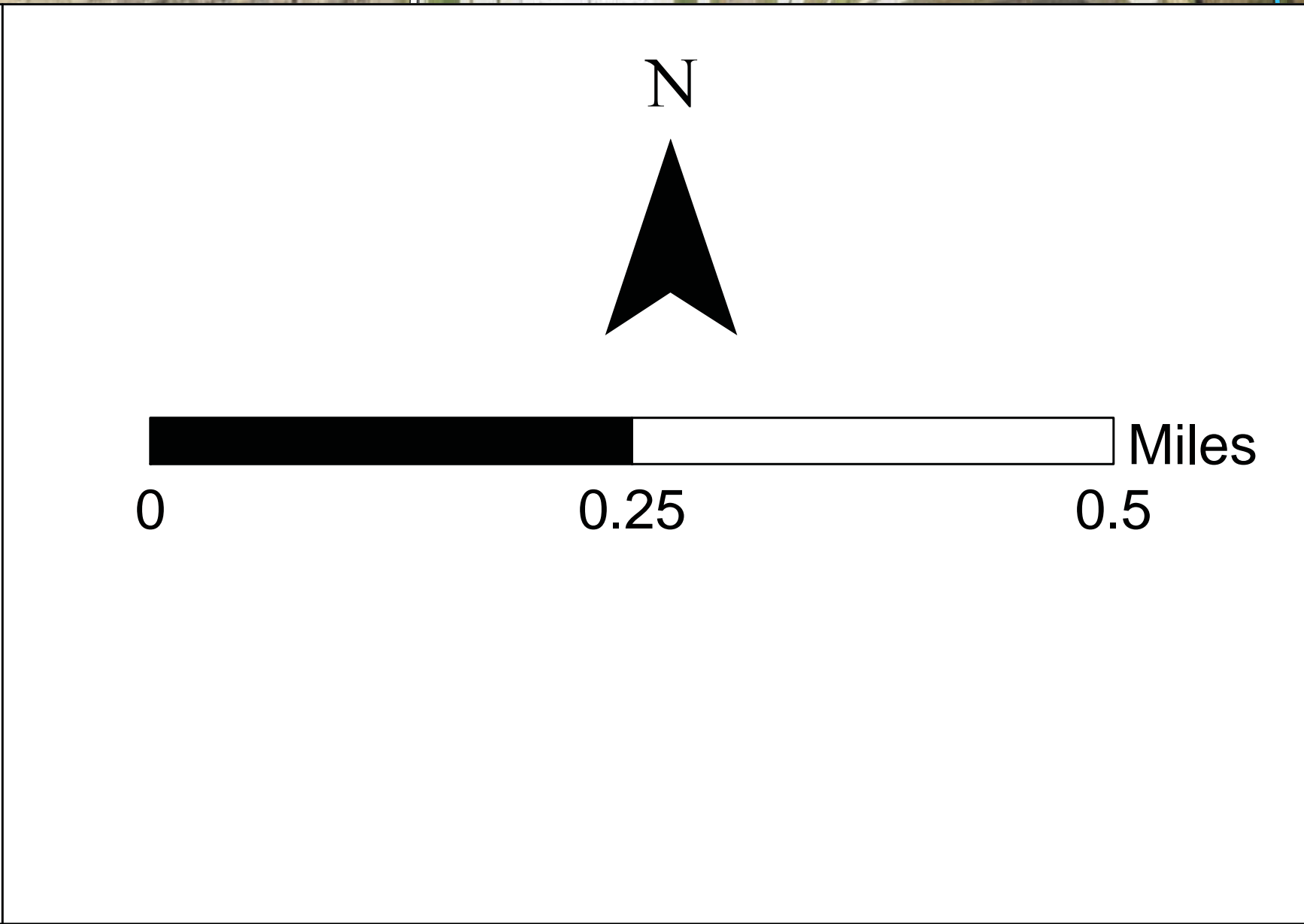
Environmental Constraints Map



**ENVIRONMENTAL
CONSTRAINTS MAP**

**FM 2755
From SH 78 to CR 541**

Collin County, Texas



Legend

- Project Limits
- Project Study Area
- Laven City Limits
- Major Roadway
- Local Roadway
- Railroad
- Pipeline
- Stream
- Historic Marker

- Park
- City Hall
- Daycare
- Fire
- Place of Worship
- Police
- Post Office
- Utility
- School

- Petroleum Storage Tank
- Subdivision
- NWI Wetland
- NWI Water Feature
- Housing Under Construction
- Roadway Under Construction
- FEMA Mapped Floodplain
- High Minority Census Block

Sources: Facilities from NCTCOG and Google (20223); PSTs from TCEQ (2020); Wetlands and Water from NWI (2022); Roads, Cities and Rail from TxDOT (2022); Streams from NCTCOG (2022); Subdivisions from NCTCOG (2023); Floodplains from FEMA (2014); Basemap from ESRI (2023).

Disclaimer: This map was generated by HNTB Corporation using GIS (Geographic Information Systems) software. No claims are made to the accuracy or completeness of the information shown herein nor to its suitability for a particular use. The scale and location of all mapped data are approximate.

*The Project Study Area is defined as a half-mile buffer on either side of FM 2755.

July 2025