

TEXAS DEPARTMENT OF TRANSPORTATION  
DALLAS DISTRICT

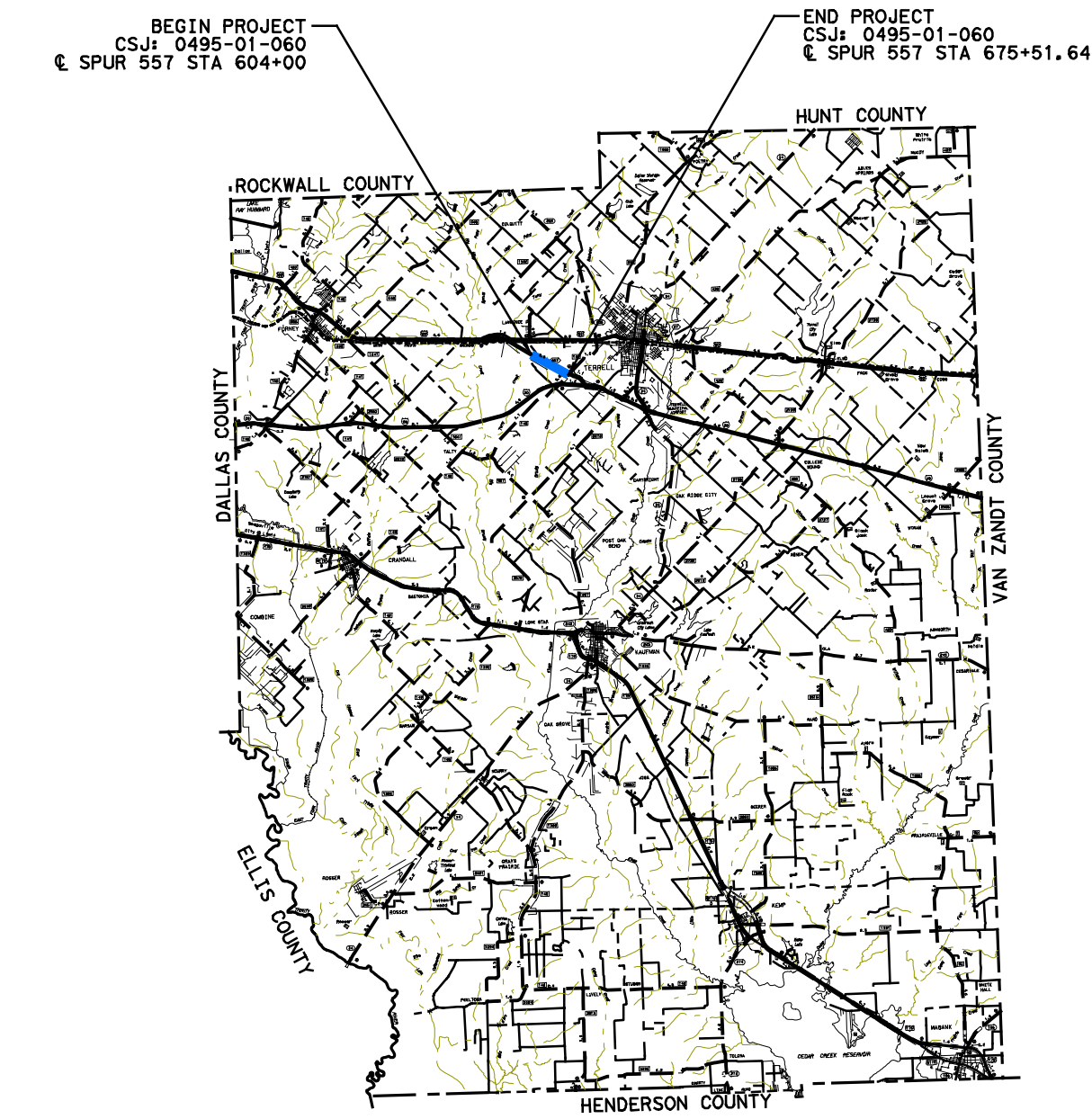
WILLIAM L. HALE, P.E., DISTRICT ENGINEER

DESIGN SCHEMATIC FOR  
SPUR 557  
FROM LAS LOMAS PARKWAY TO FM 148  
TERRELL, TEXAS  
KAUFMAN COUNTY

CSJ: 0495-01-060, 0495-01-064, 0495-01-065

OCTOBER 2013

ROLL 2 OF 2  
LAS LOMAS PARKWAY



FUNCTIONAL CLASSIFICATION

SPUR 557: URBAN FREEWAY  
FRONTAGE ROAD: URBAN COLLECTOR  
LAS LOMAS PARKWAY: URBAN LOCAL

PROJECT LENGTH

1.5 MILES

DESIGN SPEED

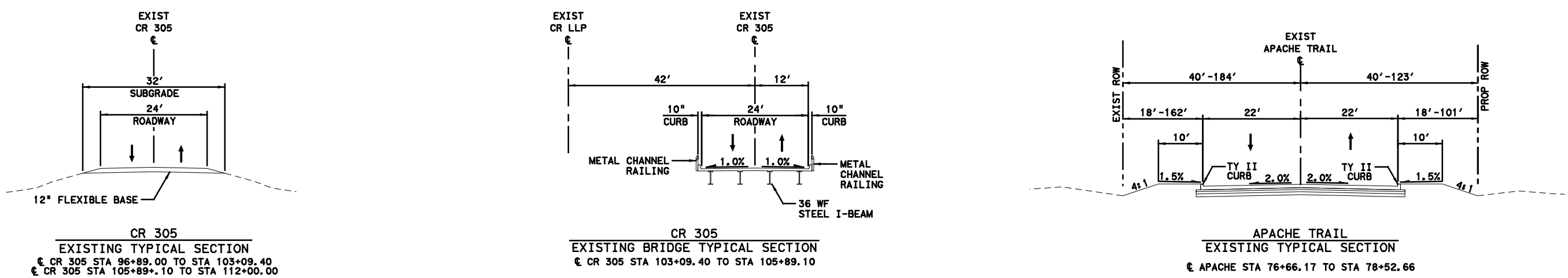
SPUR 557: 70 MPH  
FRONTAGE ROAD: 50 MPH  
RAMP: 50 MPH  
LAS LOMAS PKWY: 55 MPH

SCHEMATIC SCALE (18" PLOT)  
HORIZONTAL: 1"=200'  
VERTICAL: 1"=20'

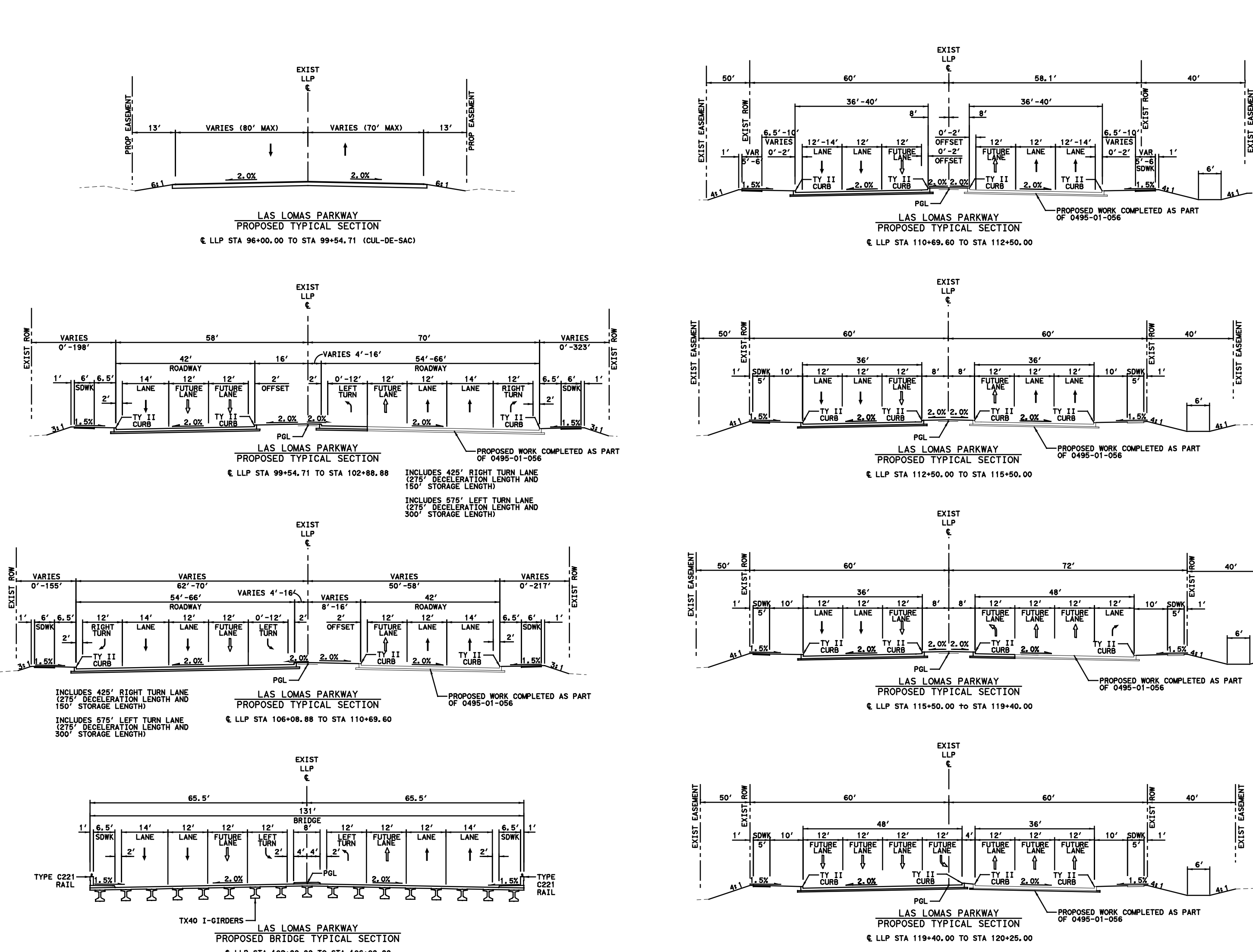
SCHEMATIC SCALE (36" PLOT)  
HORIZONTAL: 1"=100'  
VERTICAL: 1"=10'

SCHEMATIC PREPARED BY:  
KIRLEY-HUNT  
AND ASSOCIATES, INC.  
PROJECT NUMBER:  
102189  
DATE:  
10/21/13  
NOT A BIDDING DOCUMENT

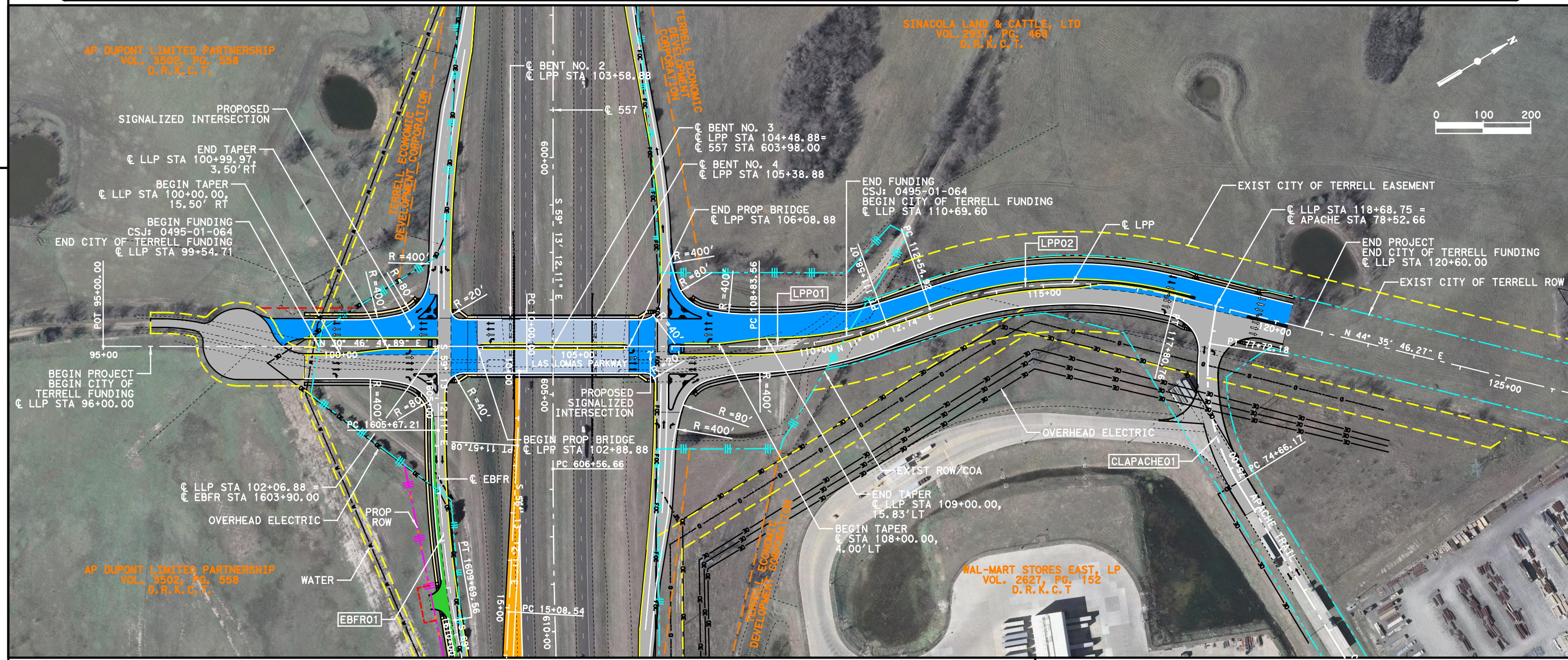
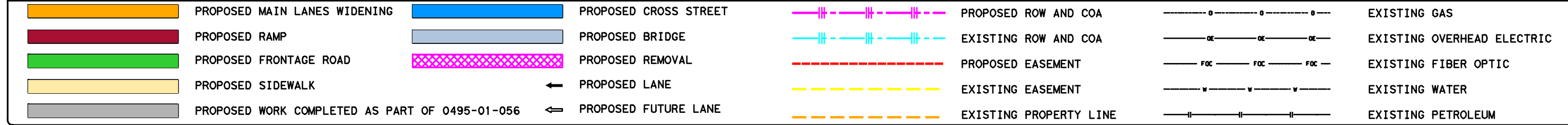
\*\*\* LAS LOMAS PKWY EXISTING TYPICAL SECTIONS \*\*\*



\*\*\* LAS LOMAS PKWY PROPOSED TYPICAL SECTIONS \*\*\*



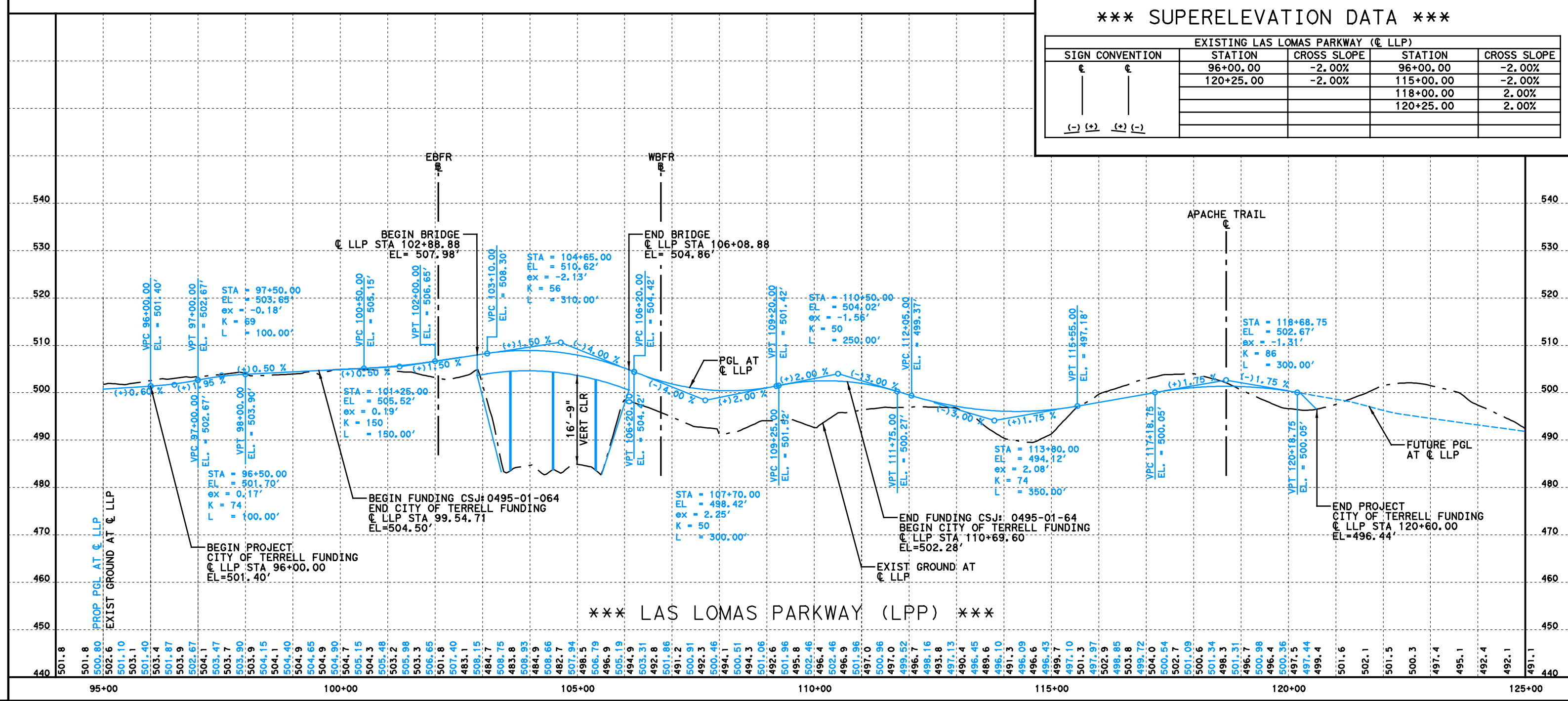
\*\*\* LEGEND \*\*\*



\*\*\* SUPERELEVATION DATA \*\*\*

SIGN CONVENTION	EXISTING LAS LOMAS PARKWAY (E LPP)	CROSS SLOPE
96+00.00	-2.00%	-2.00%
120+25.00	-2.00%	-2.00%
120+25.00	-2.00%	2.00%

\*\*\* LAS LOMAS PARKWAY (LPP) \*\*\*



\*\*\* HORIZONTAL GEOMETRIC DATA \*\*\*

EXISTING LAS LOMAS PARKWAY (E LPP)				
BEGIN CHAIN		N 6,955,316.02 E 2,632,391.44 Sta		95-00.00
Course from BEGIN CHAIN to P		[LPP2] N 30° 46' 47.893" E		Diet 1,383.56
[LPP1]				
P.I. Station	110+22.18	N 9,956,625.78	E 2,633,170.40	
Delta	19° 35' 55.18"	(LT)		
Length	138.61			
Station	110+22.18			
Station	111+60.79			
Station	112+99.40			
Station	114+38.01			
Station	115+76.62			
Station	117+15.23			
Station	118+53.84			
Station	120+00.00			
Station	121+38.61			
Station	122+77.22			
Station	124+15.83			
Station	125+54.44			
Station	127+00.00			
Station	128+38.61			
Station	129+77.22			
Station	131+15.83			
Station	132+54.44			
Station	134+00.00			
Station	135+38.61			
Station	136+77.22			
Station	138+15.83			
Station	139+54.44			
Station	141+00.00			
Station	142+38.61			
Station	143+77.22			
Station	145+15.83			
Station	146+54.44			
Station	148+00.00			
Station	149+38.61			
Station	150+77.22			
Station	152+15.83			
Station	153+54.44			
Station	155+00.00			
Station	156+38.61			
Station	157+77.22			
Station	159+15.83			
Station	160+54.44			
Station	162+00.00			
Station	163+38.61			
Station	164+77.22			
Station	166+15.83			
Station	167+54.44			
Station	169+00.00			
Station	170+38.61			
Station	171+77.22			
Station	173+15.83			
Station	174+54.44			
Station	176+00.00			
Station	177+38.61			
Station	178+77.22			
Station	180+15.83			
Station	181+54.44			
Station	183+00.00			
Station	184+38.61			
Station	185+77.22			
Station	187+15.83			
Station	188+54.44			
Station	190+00.00			
Station	191+38.61			
Station	192+77.22			
Station	194+15.83			
Station	195+54.44			
Station	197+00.00			
Station	198+38.61			
Station	199+77.22			
Station	201+15.83			
Station	202+54.44			
Station	204+00.00			
Station	205+38.61			
Station	206+77.22			
Station	208+15.83			
Station	209+54.44			
Station	211+00.00			
Station	212+38.61			
Station	213+77.22			
Station	215+15.83			
Station	216+54.44			
Station	218+00.00			
Station	219+38.61			
Station	220+77.22			
Station	222+15.83			
Station	223+54.44			
Station	225+00.00			
Station	226+38.61			
Station	227+77.22			
Station	229+15.83			
Station	230+54.44			
Station	232+00.00			
Station	233+38.61			
Station	234+77.22			
Station	236+15.83			
Station	237+54.44			
Station	239+00.00			
Station	240+38.61			
Station	241+77.22			
Station	243+15.83			
Station	244+54.44			
Station	246+00.00			
Station	247+38.61			
Station	248+77.22			
Station	250+15.83			
Station	251+54.44			
Station	253+00.00			
Station	254+38.61			
Station	255+77.22			
Station	257+15.83			
Station	258+54.44			
Station	260+00.00			
Station	261+38.61			
Station	262+77.22			
Station	264+15.83			
Station	265+54.44			
Station	267+00.00			
Station	268+38.61			
Station	269+77.22			
Station	271+15.83			
Station	272+54.44			
Station	274+00.00			
Station	275+38.61			
Station	276+77.22			
Station	278+15.83			
Station	279+54.44			
Station	281+00.00			
Station	282+38.61			
Station	283+77.22			
Station	285+15.83			
Station	286+54.44			
Station	288+00.00			
Station	289+38.61			
Station	290+77.22			
Station	292+15.83			
Station	293+54.44			
Station	295+00.00			
Station	296+38.61			
Station	297+77.22			
Station	299+15.83			
Station	300+54.44			
Station	302+00.00			
Station	303+38.61			
Station	304+77.22			
Station	306+15.83			
Station	307+54.44			
Station	309+00.00			
Station	310+38.61			
Station	311+77.22			
Station	313+15.83			
Station	314+54.44			
Station	316+00.00			
Station	317+38.61			
Station	318+77.22			
Station	320+15.83			
Station	321+54.44			
Station	323+00.00			
Station	324+38.61			
Station	325+77.22			
Station	327+15.83			
Station	328+54.44			
Station	330+00.00			
Station	331+38.61			
Station	332+77.22			
Station	334+15.83			
Station	335+54.44			
Station	337+00.00			
Station	338+38.61			
Station	339+77.22			
Station	341+15.83			
Station	342+54.44			
Station	344+00.00			
Station	345+38.61			
Station	346+77.22			
Station	348+15.83			
Station	349+54.44			
Station	351+00.00			
Station	352+38.61			
Station	353+77.22			
Station	355+15.83			
Station	356+54.44			
Station	358+00.00			
Station	359+38.61			
Station	360+77.22			
Station	362+15.83			
Station	363+54.44			
Station	365+00.00			
Station	366+38.61			
Station	367+77.22			
Station	369+15.83			
Station	370+54.44			
Station	372+00.00			
Station	373+38.61			
Station	374+77.22			
Station	376+15.83			
Station	377+54.44			
Station	379+00.00			
Station	380+38.61			
Station	381+77.22			
Station	383+15.83			
Station	384+54.44			
Station	386+00.00			
Station	387+38.61			
Station	388+77.22			
Station	390+15.83			
Station	391+54.44			
Station	393+00.00			
Station	394+38.61			
Station	395+77.22			
Station	397+15.83			
Station	398+54.44			
Station	400+00.00			
Station	401+38.61			
Station	402+77.22			
Station	404+15.83			
Station	405+54.44			
Station	407+00.00			
Station	408+38.61			
Station	409+77.22			
Station	411+15.83			
Station	412+54.44			
Station	414+00.00			
Station	415+38.61			
Station	416+77.22			
Station	418+15.83			
Station	419+54.44			
Station	421+00.00			
Station	422+38.61			
Station	423+77.22			
Station	425+15.83			
Station	426+54.44			
Station	428+00.00			
Station	429+38.61			
Station	430+77.22			
Station	432+15.83			
Station	433+54.44			
Station	435+00.00			
Station	436+38.61			
Station	437+77.22			
Station	439+15.83			
Station	440+54.44			
Station	442+00.00			
Station	443+38.61			
Station	444+77.22			
Station	446+15.83			
Station	447+54.44			
Station	449+00.00			
Station	450+38.61			
Station	451+77.22			
Station	453+15.83			
Station	454+54.44			
Station	456+00.00			
Station	457+38.61			
Station	458+77.22			
Station	460+15.83			
Station	461+54.44			
Station	463+00.00			
Station	464+38.61			
Station	465+77.22			
Station	467+15.83			
Station	468+54.44			
Station	470+00.00			
Station	471+38.61			
Station	472+77.22			
Station	474+15.83			
Station	475+54.44			
Station	477+00.00			
Station	478+38.61			
Station	479+77.22			
Station	481+15.83			
Station	482+54.44			
Station	484+00.00			
Station	485+38.61			
Station	486+77.22			
Station	488+15.83			
Station	489+54.44			
Station	491+00.00			
Station	492+38.61			
Station	493+77.22			
Station	495+15.83			
Station	496+54.44			
Station	498+00.00			
Station	499+38.61			
Station	500+77.22			
Station	502+15.83			
Station	503+54.44			
Station	505+00.00			
Station	506+38.61			
Station	507+77.22			
Station	509+15.83			
Station	510+54.44			
Station	512+00.00			
Station	513+38.61			
Station	514+77.22			
Station	516+15.83			
Station	517+54.44			
Station	519+00.00			
Station	520+38.61			
Station	521+77.22			
Station	523+15.83			
Station	524+54.44			
Station	526+00.00			
Station	527+38.61			
Station	528+77.22			
Station	530+15.83			
Station	531+54.44			
Station	533+00.00			
Station	534+38.61			
Station	535+77.22			
Station	537+15.83			
Station	538+54.44			
Station	540+00.00			
Station	541+38.61			
Station	542+77.22			
Station	544+15.83			
Station	545+54.44			
Station	547+00.00			
Station	548+38.61			
Station	549+77.22			
Station	551+15.83			
Station	552+54.44			
Station	554+00.00			
Station	555+38.61			
Station	556+77.22			
Station	558+15.83			
Station	559+54.44			
Station	561+00.00			
Station	562+38.61			
Station	563+77.22			
Station	565+15.83			
Station	566+54.44			
Station	568+00.00			
Station	569+38.61			
Station	570+77.22			
Station	572+15.83			
Station	573+54.44			
Station	575+00.00			
Station	576+38.61			
Station	577+77.22			
Station	579+15.83			
Station	580+54.44			
Station	582+00.00			
Station	583+38.61			
Station	584+77.22			
Station	586+15.83			
Station	587+54.44			
Station	589+00.00			
Station	590+38.61			
Station	591+77.22			