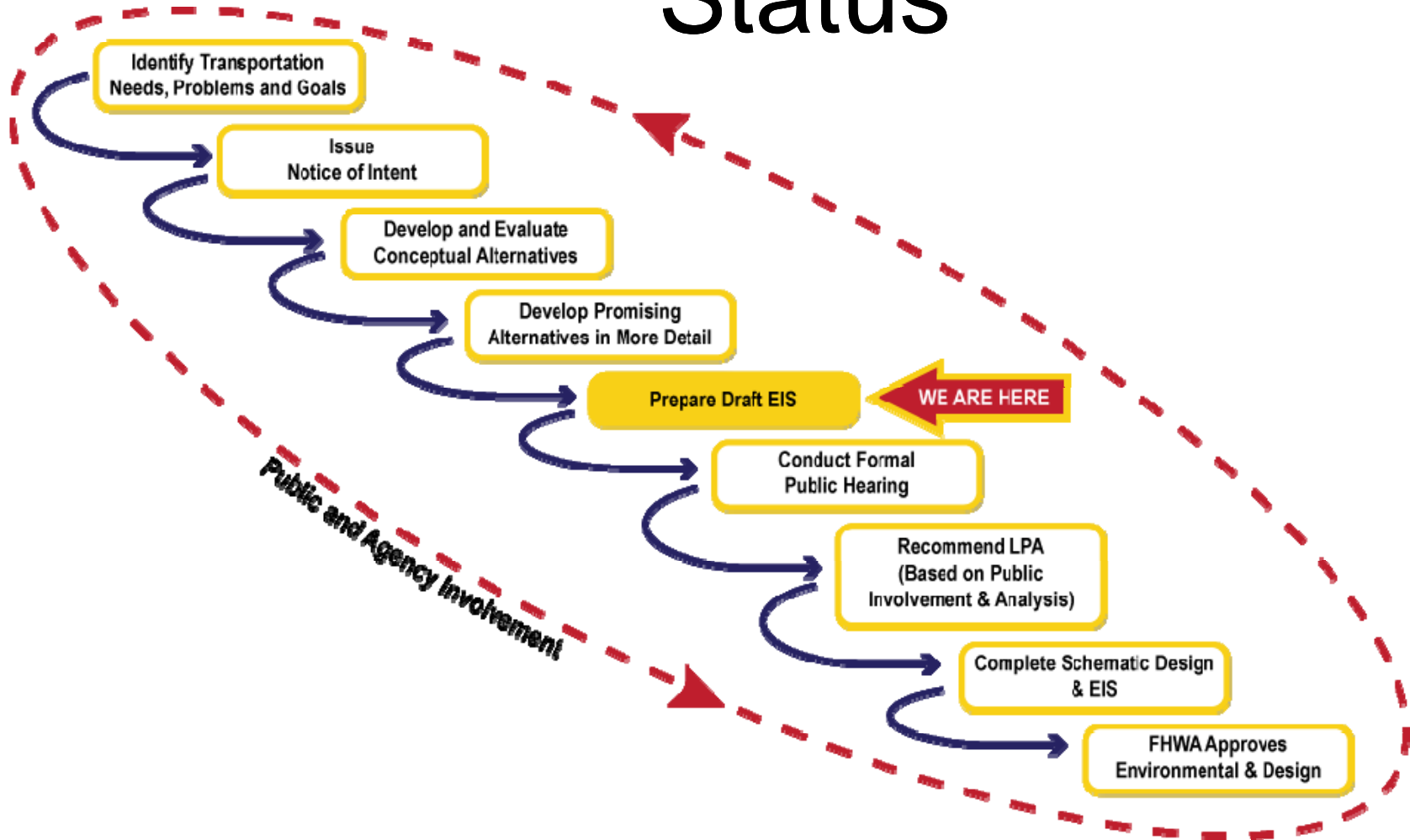


SH 190

The East Branch

November 2, 2011

Project Process/Current Status



Draft Environmental Impact Statement (DEIS)

The primary purpose of the DEIS is to assess the potential environmental effects of the implementation of the No Build and Build Alternatives for the East Branch State Highway (SH) 190 Transportation Project. The DEIS would also serve as the primary document to facilitate review of the project by federal, state, regional, and local agencies, decision-makers, and the public. The following items are addressed in the DEIS.

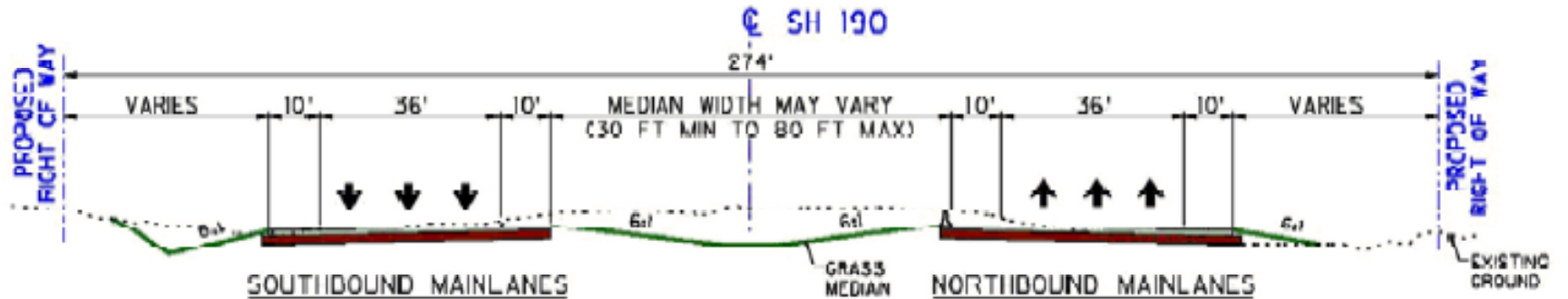
- **Need and Purpose for Action:** Specific transportation problems are presented along with a discussion of the need and purpose for transportation improvements in the eastern portion of Dallas County. The chapter also discusses local and regional transportation goals.
- **Alternatives Considered:** Provides an overview of the screening process and a description of the alternatives that have been considered during previous studies that have led to the alternatives examined in this DEIS. This discussion includes a description of the No Build and three Build alternatives examined in the document.

- **Environmental Resources, Impacts, and Mitigation:** Describes the existing social, economic, and natural environmental conditions in the study area. This section also discusses potential impacts of the alternatives being evaluated on these resources and where appropriate, potential mitigation measures to address impacts are defined.
- **Indirect Impacts:** Discusses the indirect impacts associated with the project alternatives. The chapter includes identification of anticipated development under the No Build and Build Alternatives and the effects on socioeconomic, biological, and cultural resources.
- **Cumulative Impacts:** Discusses the cumulative impacts associated with the project alternatives on land use, socioeconomic, air quality, waters of the U.S., floodplains, water quality, biological, and cultural resources.
- **Public and Agency Involvement:** This section of the DEIS summarizes the public and agency involvement efforts.

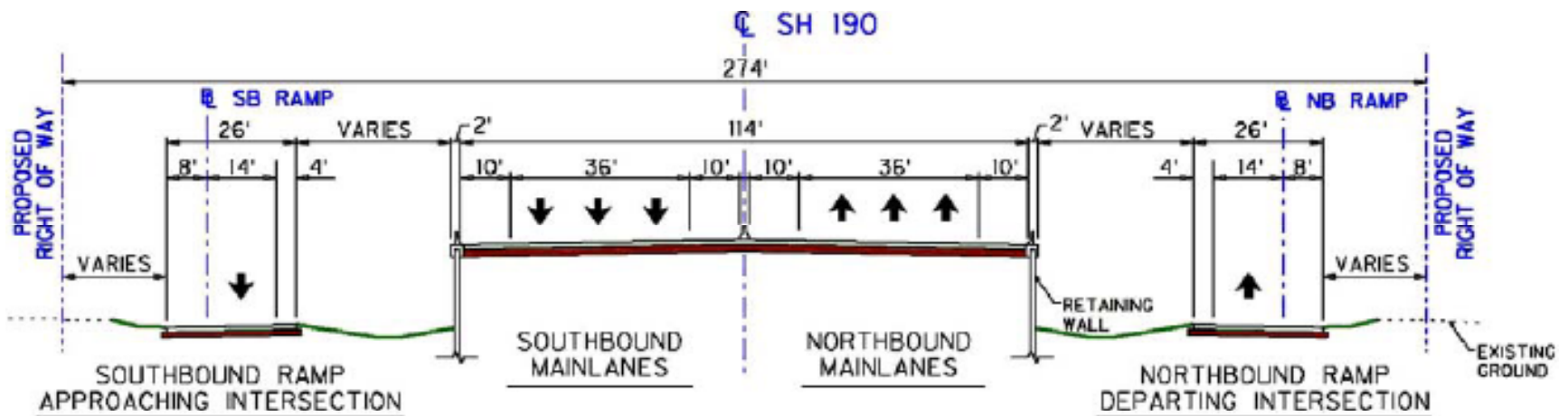
Alignments Considered



Proposed SH 190 Typical Section



TYPICAL SECTION WITH DIVIDED MAINLANES AND CENTER MEDIAN



TYPICAL SECTION WITH RAMP APPROACHING GRADE SEPARATION

SH 190 Access

- Locations of proposed access points
 - IH 30 (Directional Interchange)
 - Town East Rd (East Fork Rd for Alternative 2)
 - US 80 (Directional Interchange)
 - Scyene Road
 - Lawson Road
 - IH 20 (Directional Interchange)
 - Frontage Roads?

Project Schedule

The Mobility 2035 Plan requires update to the current DEIS (includes traffic, demographics, MSAT, Noise, ICI, and Historical)

- December 2011 - State Review of Conceptual Schematic
- April 2012 – State Review of Draft EIS
- June 2012 – Federal Review of Draft EIS
- September 2012 – Federal Legal Review of Draft EIS
- April 2013 – Public Hearing
- August 2013 – Final EIS Review Begins
- October 2014 – Federal Approval of Final EIS (ROD)
- Secure Project Funding for ROW acquisition and construction

Thank You