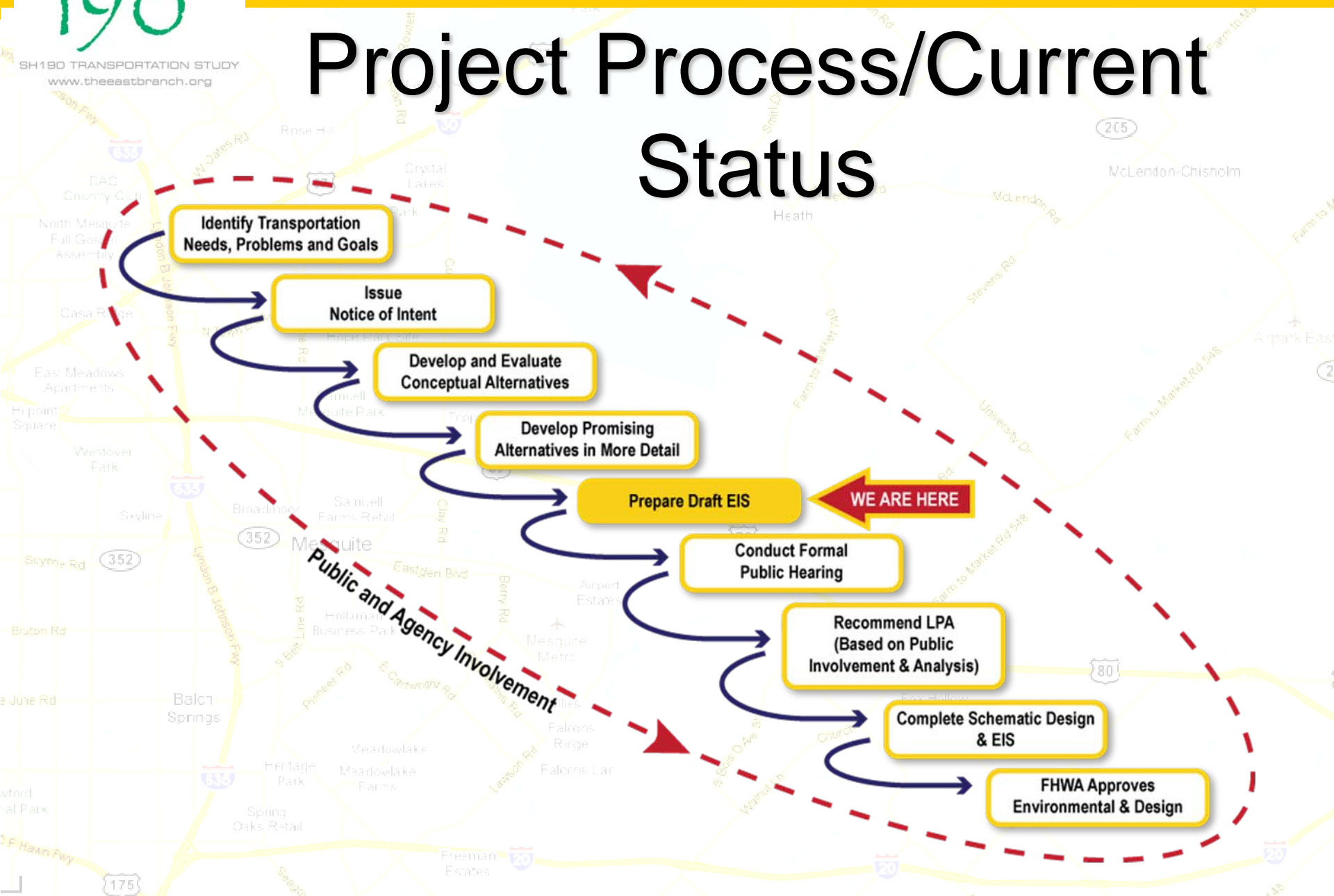


SH 190 The East Branch

March 22, 2011

Project Process/Current Status



Draft Environmental Impact Statement (DEIS)

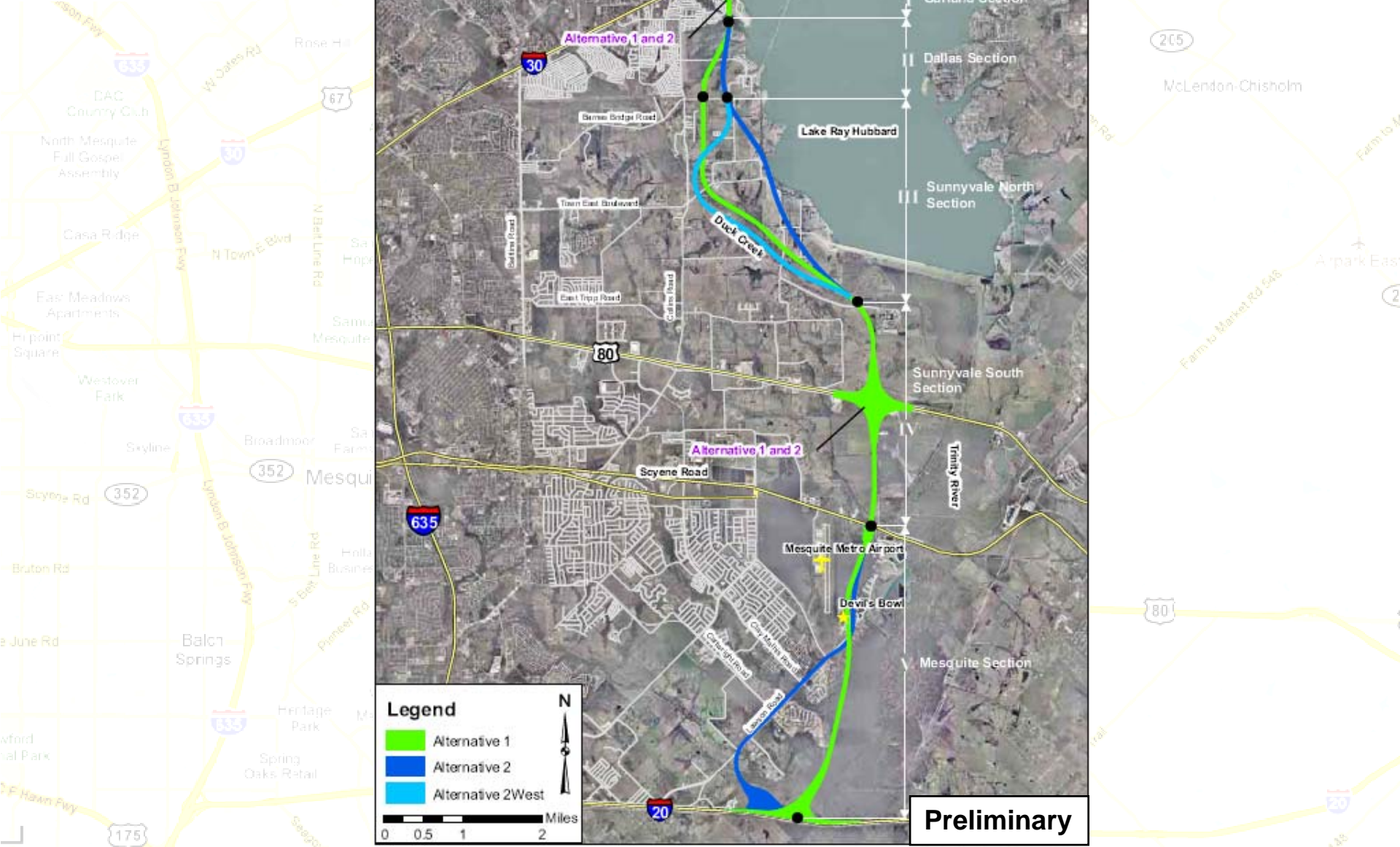
The primary purpose of the DEIS is to assess the potential environmental effects of the implementation of the No Build and Build Alternatives for the East Branch State Highway (SH) 190 Transportation Project. The DEIS would also serve as the primary document to facilitate review of the project by federal, state, regional, and local agencies, decision-makers, and the public. The following items are addressed in the DEIS.

- **Need and Purpose for Action:** Specific transportation problems are presented along with a discussion of the need and purpose for transportation improvements in the eastern portion of Dallas County. The chapter also discusses local and regional transportation goals.
- **Alternatives Considered:** Provides an overview of the screening process and a description of the alternatives that have been considered during previous studies that have led to the alternatives examined in this DEIS. This discussion includes a description of the No Build and three Build alternatives examined in the document.

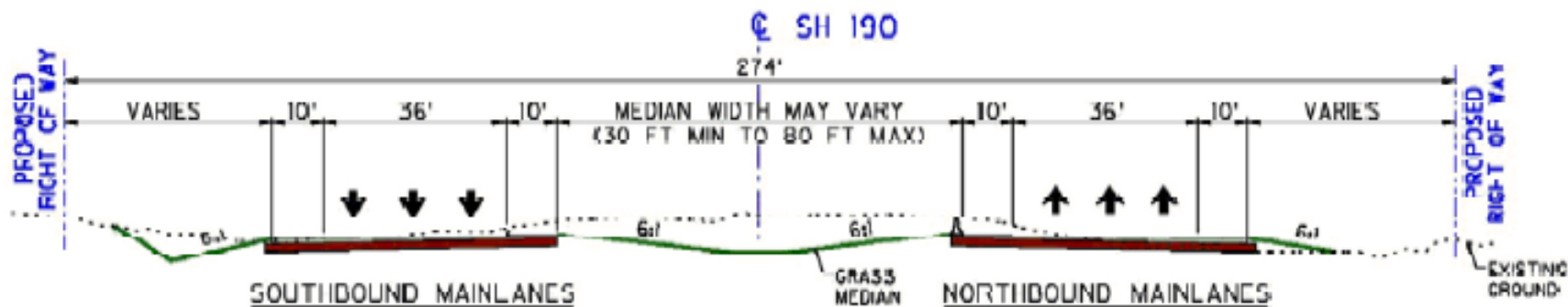
- **Environmental Resources, Impacts, and Mitigation:** Describes the existing social, economic, and natural environmental conditions in the study area. This section also discusses potential impacts of the alternatives being evaluated on these resources and where appropriate, potential mitigation measures to address impacts are defined.
- **Indirect Impacts:** Discusses the indirect impacts associated with the project alternatives. The chapter includes identification of anticipated development under the No Build and Build Alternatives and the effects on socioeconomic, biological, and cultural resources.
- **Cumulative Impacts:** Discusses the cumulative impacts associated with the project alternatives on land use, socioeconomic, air quality, waters of the U.S., floodplains, water quality, biological, and cultural resources.
- **Public and Agency Involvement:** This section of the DEIS summarizes the public and agency involvement efforts.

Alignments Considered

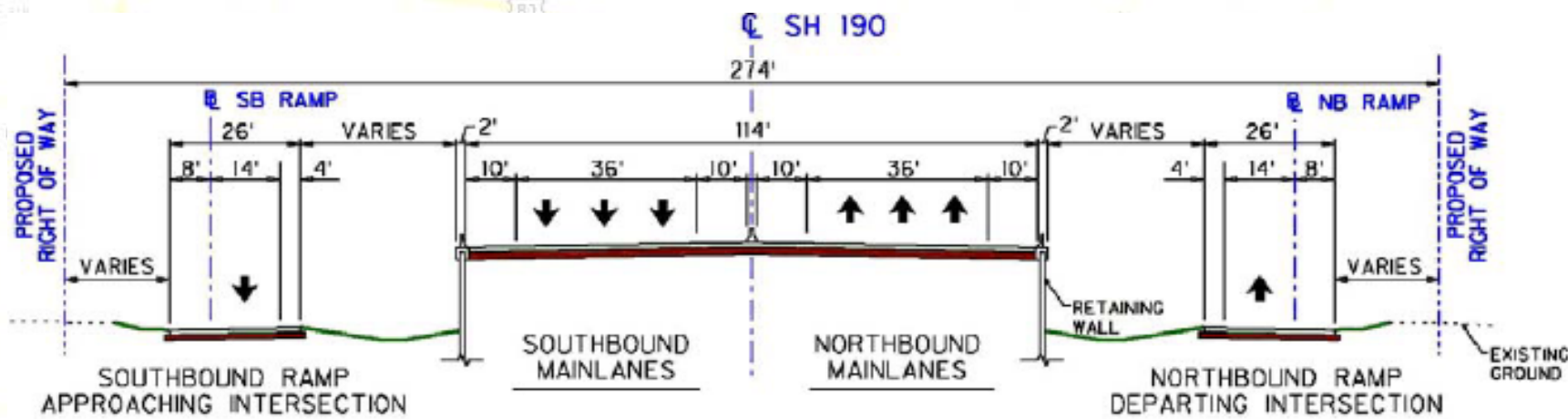
SH190 TRANSPORTATION STUDY
www.theeastbranch.org



Proposed SH 190 Typical Section

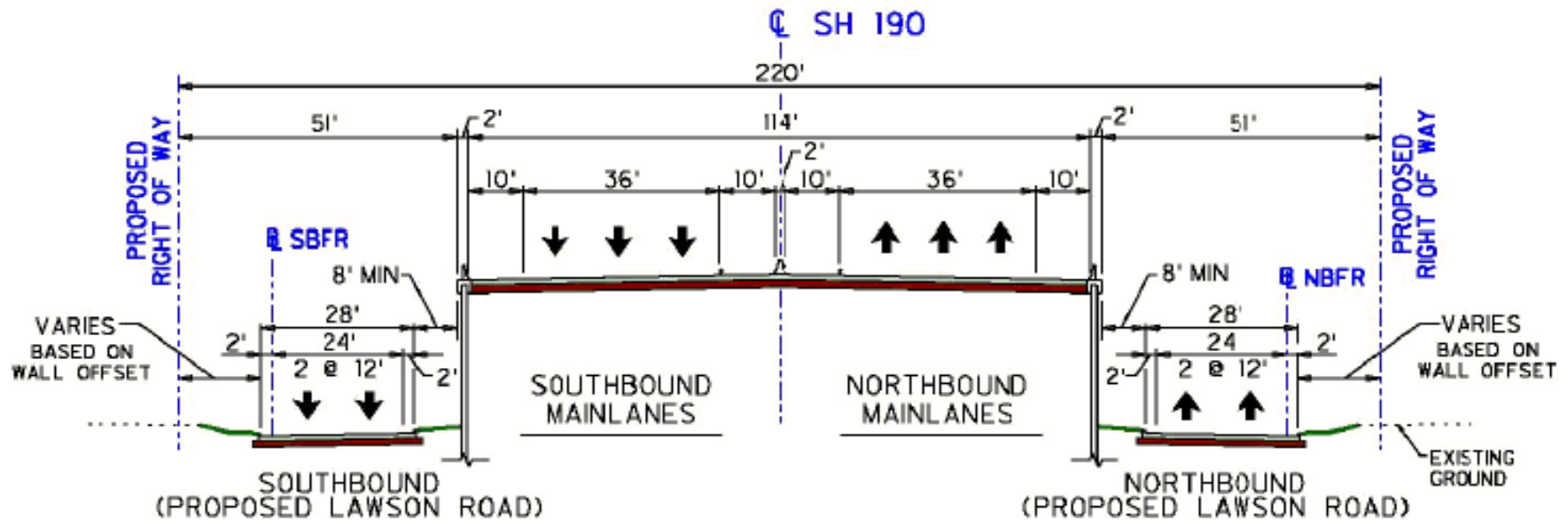


TYPICAL SECTION WITH DIVIDED MAINLANES AND CENTER MEDIAN



TYPICAL SECTION WITH RAMPs APPROACHING GRADE SEPARATION

Proposed SH 190 Typical Section (Cont'd)



TYPICAL SECTION ALONG LAWSON ROAD (MESQUITE)

Project Schedule

- March 2011 – State Review of Draft EIS
- May 2011 – Federal Review of Draft EIS
- June 2011 - State Review of Conceptual Schematic
- August 2011 – Federal Legal Review of Draft EIS
- March 2012 – Public Hearing
- July 2012 – Final EIS Review Begins
- May 2013 – Federal Approval of Final EIS (ROD)
- Secure Project Funding for ROW acquisition and construction

A map of the Mesquite, Texas area, showing major highways like I-35, I-80, and I-20, as well as local roads and landmarks. The text "Thank You" is overlaid in the center.

Thank You