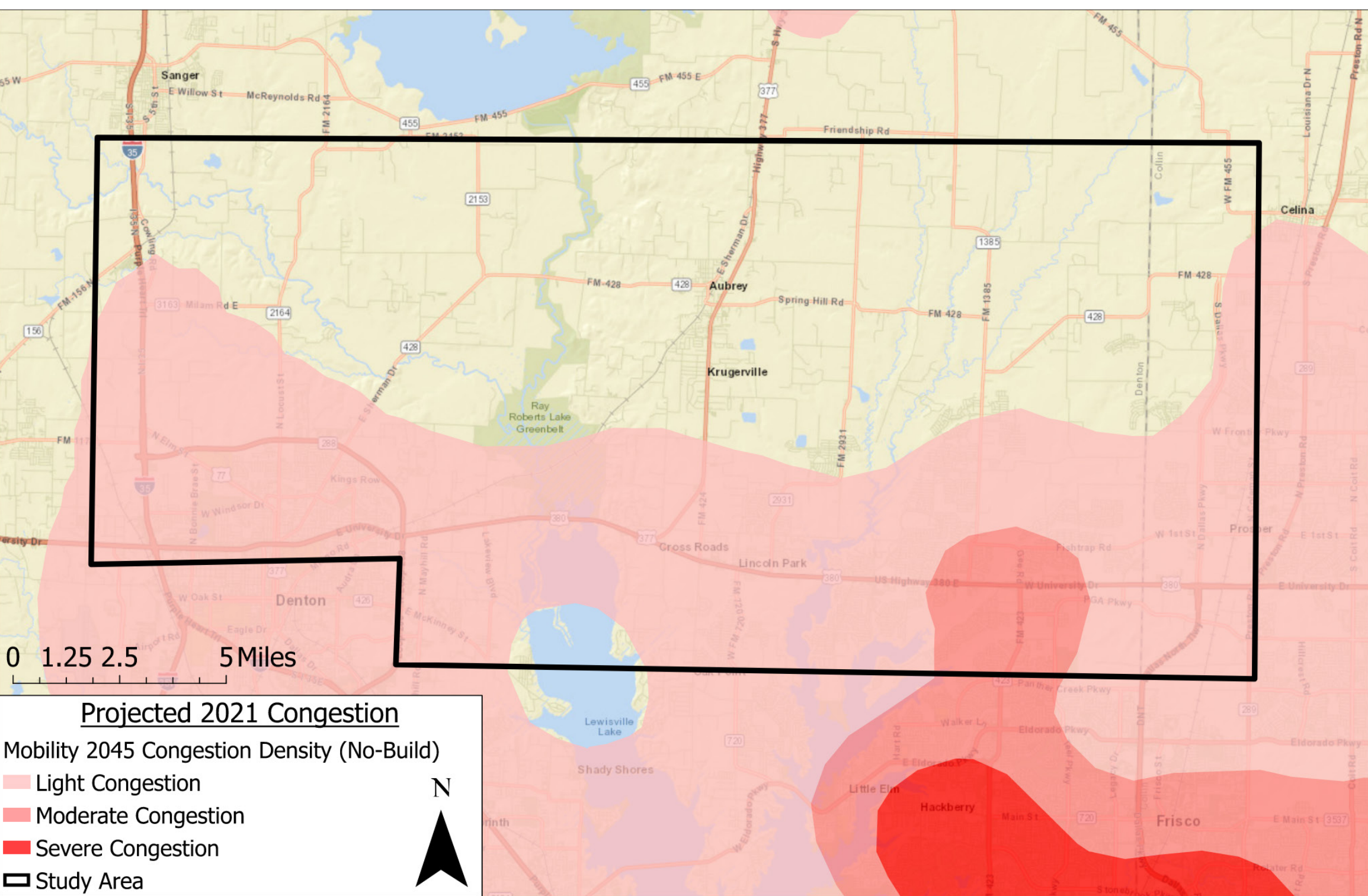
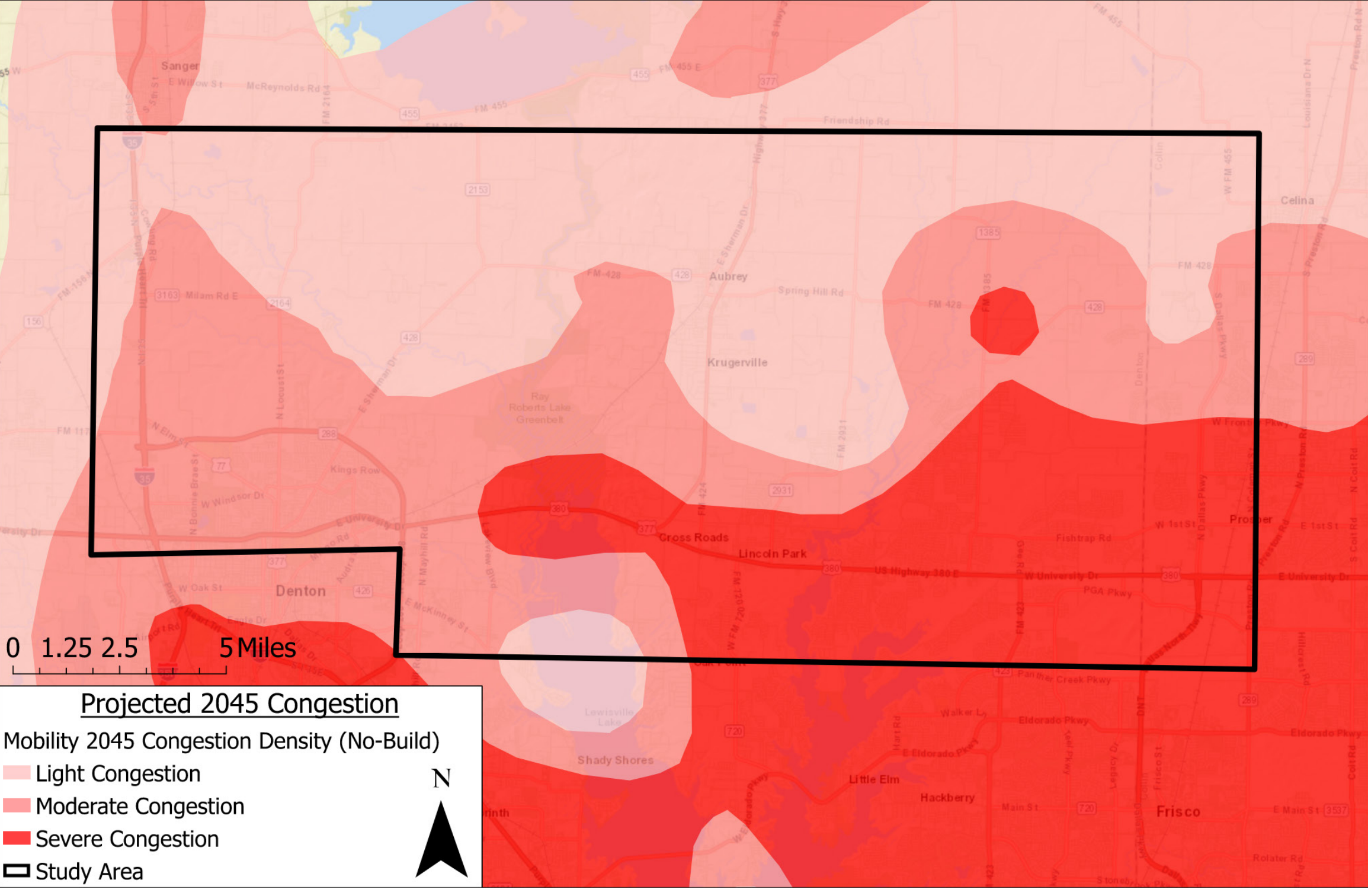


*Capacity is defined as the maximum number of vehicles a facility can handle before reaching failing Level of Service
**Demand is defined as the number of users that want to travel from one point to another
1 and 2 Source: NCTCOG 2045 Mobility Report

Projected 2021 Congestion¹



Projected 2045 Congestion²



US 380 Grade Separation In-Progress Project



Project Begin: January 2022 | Duration: 36 months