



# Public Meeting

**United States Highway (US) 380  
From Farm-to-Market (FM) 1827 to County Road (CR) 560**

**Collin County, Texas**

**CSJs: 0135-04-036, 0135-03-056, 0135-16-002**



August 2, 2022



## Help End the Streak



**HELP**  
**#EndTheStreakTX**  
End the streak of daily deaths on Texas roadways.

**TxDOT.gov** (Keyword: #EndTheStreakTX)



#EndTheStreakTX Toolkit





## Public Meeting Purpose



**Inform the public of project status and present recommendations.**



**Describe the project so the public can determine how they may be affected.**



**Provide the public the opportunity to provide input.**



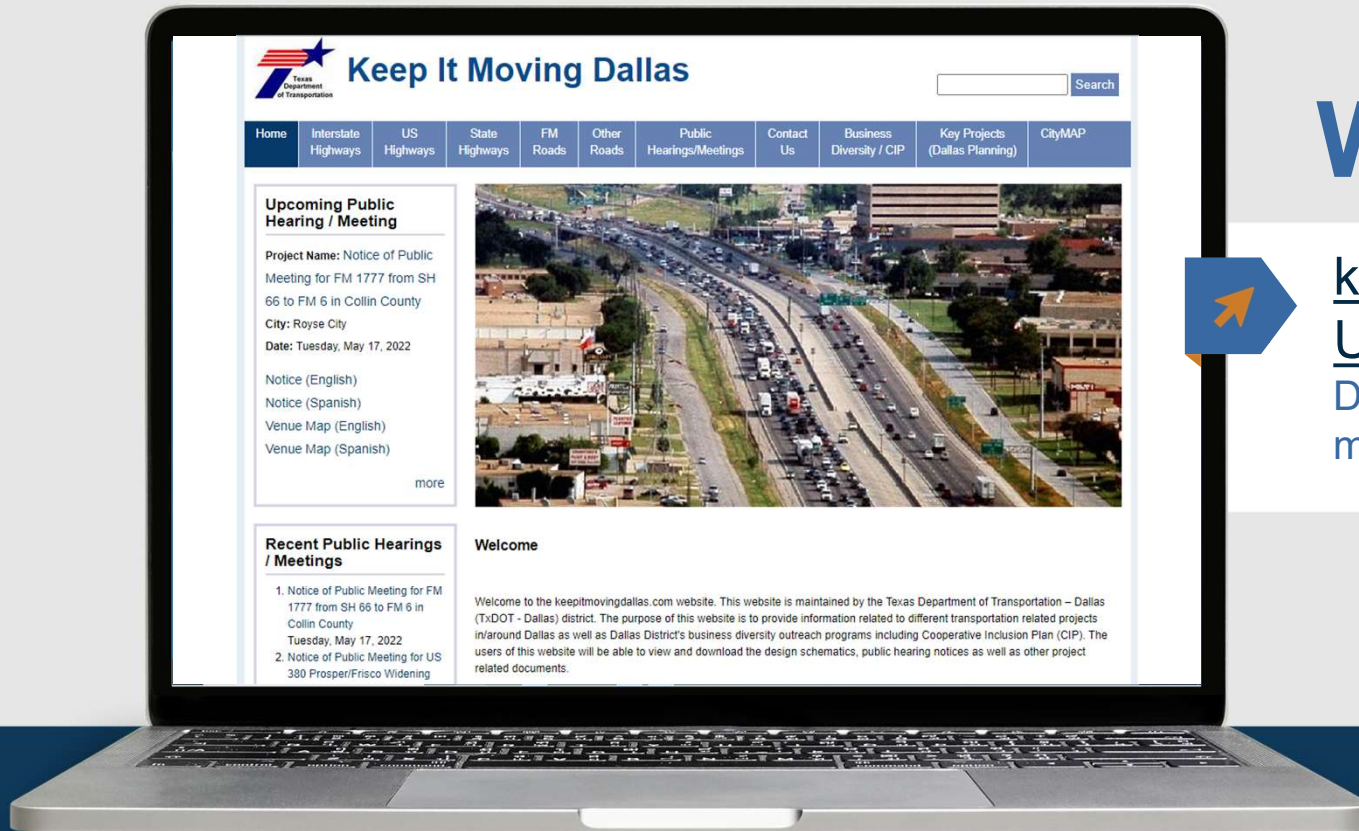
**Develop a record of public participation.**







## Viewing Design Schematic and Project Information



## WEBSITE

[keepitmovingdallas.com/  
US380Princeton](https://keepitmovingdallas.com/US380Princeton)

Direct site link to the posted materials





## Project Location

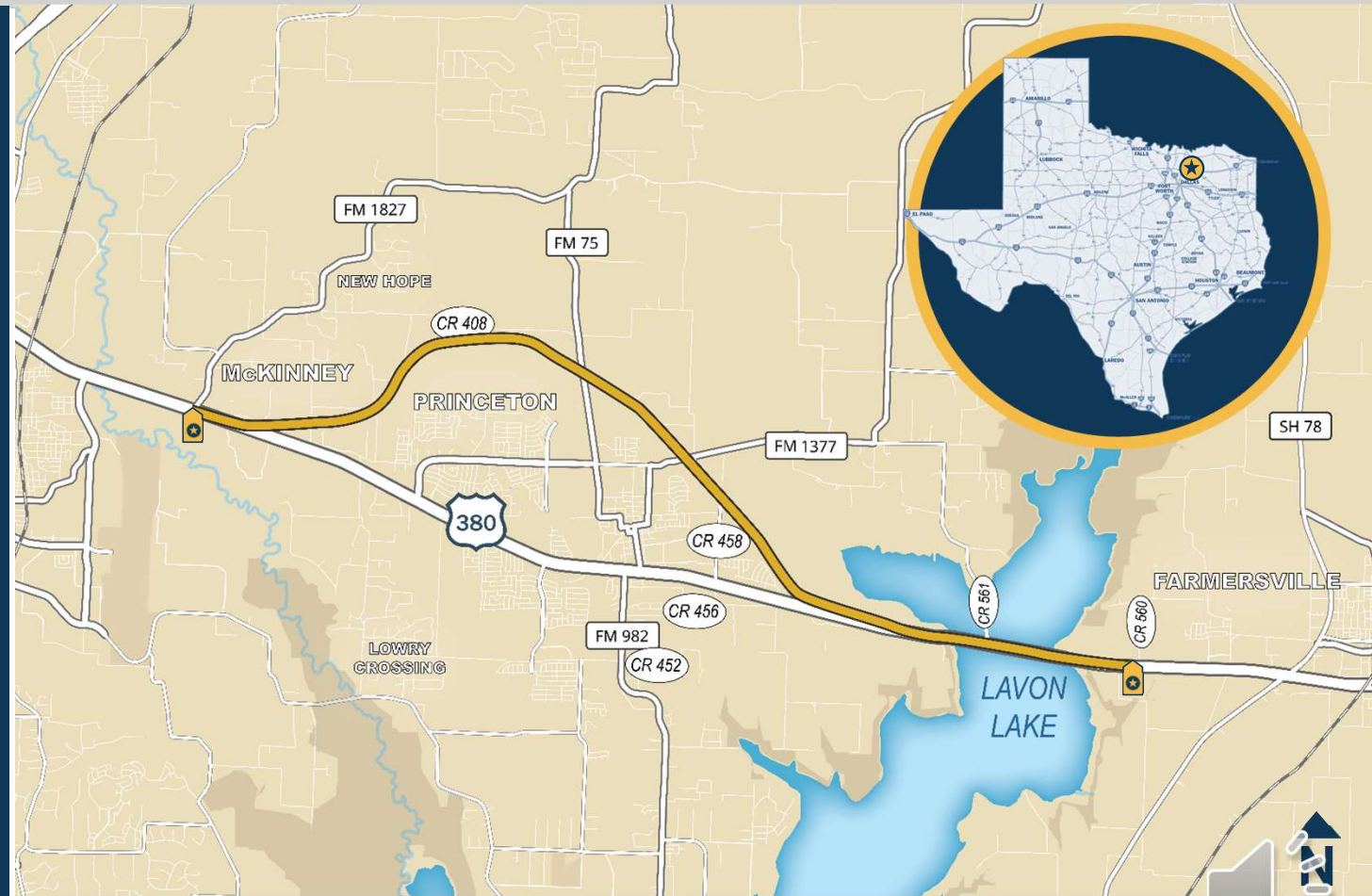


### US 380 Princeton PROJECT LIMITS:

From FM 1827 to CR 560

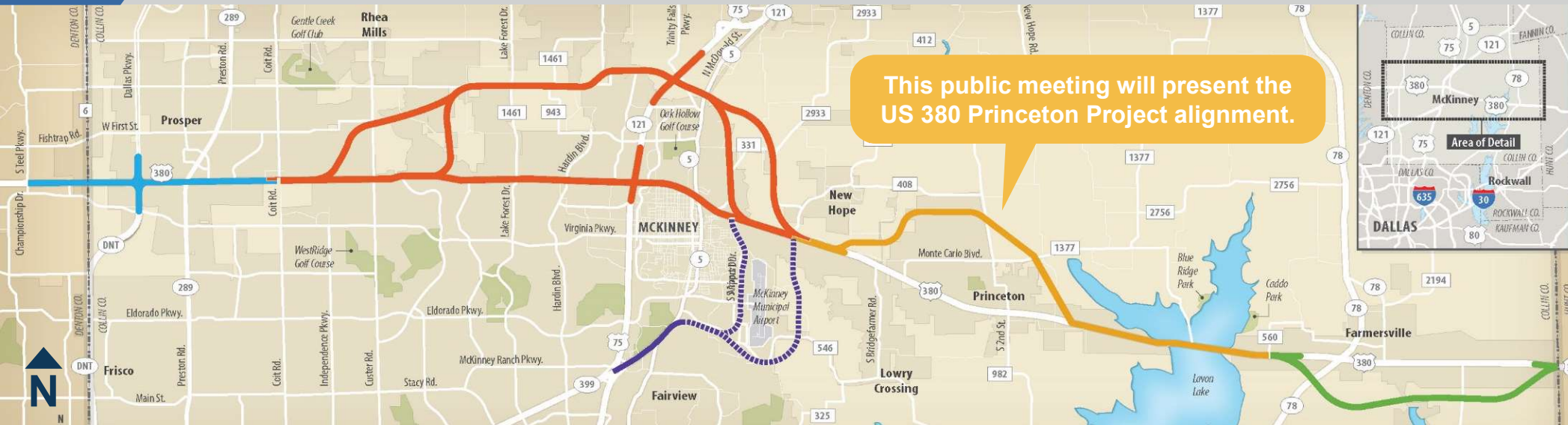
### PROJECT LENGTH:

Approx. 11.8 miles





## Project History



A feasibility study for US 380 in Collin County was completed in Spring 2020 that identified a recommended alignment.

The US 380 project was divided into five separate sections:

US 380 Prosper / Frisco

US 380 Environmental Impact Statement

Spur 399 Extension

US 380 Princeton

US 380 Farmersville





## Project Purpose and Need



### PROJECT PURPOSE



### CORRIDOR NEED

- ✓ Improve US 380 to current freeway design standards
- ✓ Increase capacity to reduce congestion
- ✓ Increase mobility and connectivity
- ✓ Improve safety through a multimodal corridor

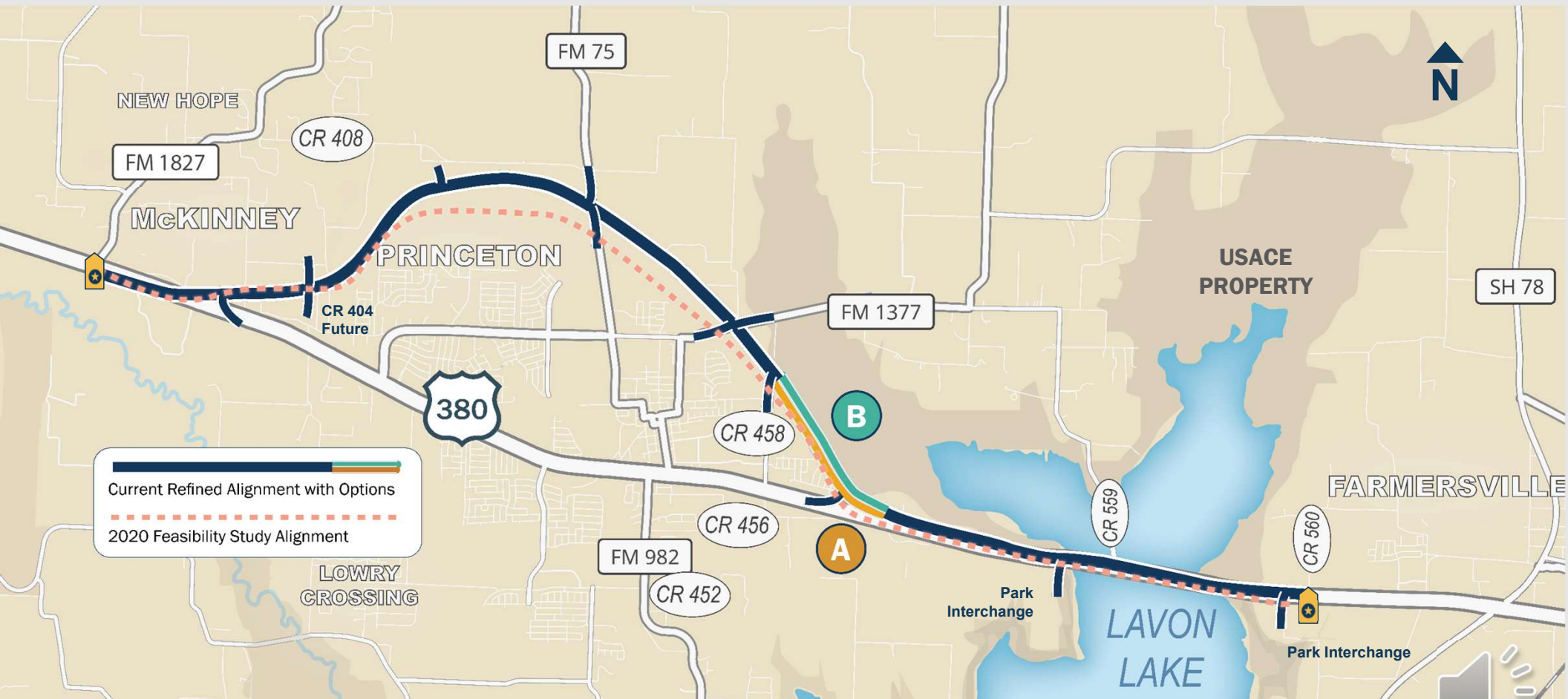
- ✗ US 380 does not meet current freeway design standards
- ✗ Does not meet current and future traffic volumes
- ✗ Does not have continuous bike and pedestrian connectivity
- ✗ Is congested with reduced mobility







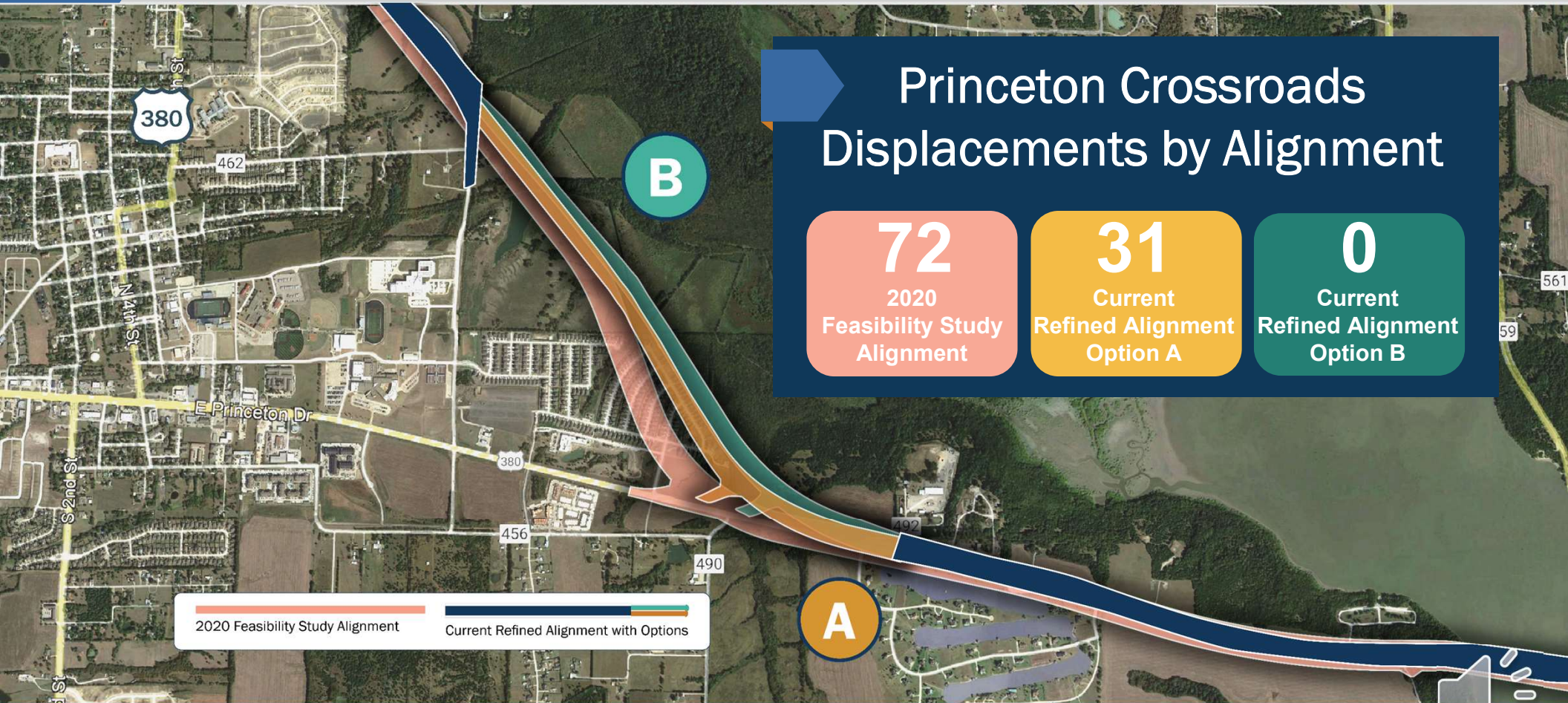
## 2020 Feasibility Study Alignment vs. Current Refined Alignment







## Current Refined Alignment with Options A and B





# Evaluation of Alignments Matrix



	No Build	2020 Feasibility Study Alignment	Current Refined Alignment Option A	Current Refined Alignment Option B
<b>Engineering</b>				
Total Length (approximately)	-	11.8 Miles	11.9 Miles	11.8 Miles
Total Construction Cost (approximately)	-	-	\$1.12 Billion	\$1.15 Billion
Level of Service	LOS F	LOS B-C	LOS B-C	LOS B-C
ROW Need	0 Acres	370 Acres	370 Acres	375 Acres
<b>Land Use</b>				
Residential Displacements (Number)	0	102	53	22
Commercial Displacements (Number)	0	34	34	34
Community Facility Displacements (Number)	0	1	1	1
Developed Land	0 Acres	245 Acres	183 Acres	171 Acres
Undeveloped Land	0 Acres	185 Acres	225 Acres	239 Acres
Future Developments	0 Acres	17 Acres	23 Acres	22 Acres
USACE Wildlife Management Area	0 Acres	0 Acres	6 Acres	18 Acres
<b>Environmental</b>				
Stream Crossings (Number)	0	21	21	21
100-Year Floodplain	0 Acres	75 Acres	75 Acres	77 Acres
Protected Species Potential Habitat	No Impact	Minimal Impacts	Minimal Impacts	Minimal Impacts
Section 4(f) Protected Lands / Parks (Number)	0	2	2	2
Air Quality	Decrease	Improve	Improve	Improve
Traffic Noise	Increase	-	TBD	TBD
Community Cohesion	No Impact	Neighborhood Bisected	Neighborhood Bisected	Minimal Impacts
Cultural Resources	No Impact	-	TBD	TBD

Information is accurate as of 7.22.2022

A larger version of this matrix can be found online at [www.keepitmovingdallas.com/US380Princeton](http://www.keepitmovingdallas.com/US380Princeton)



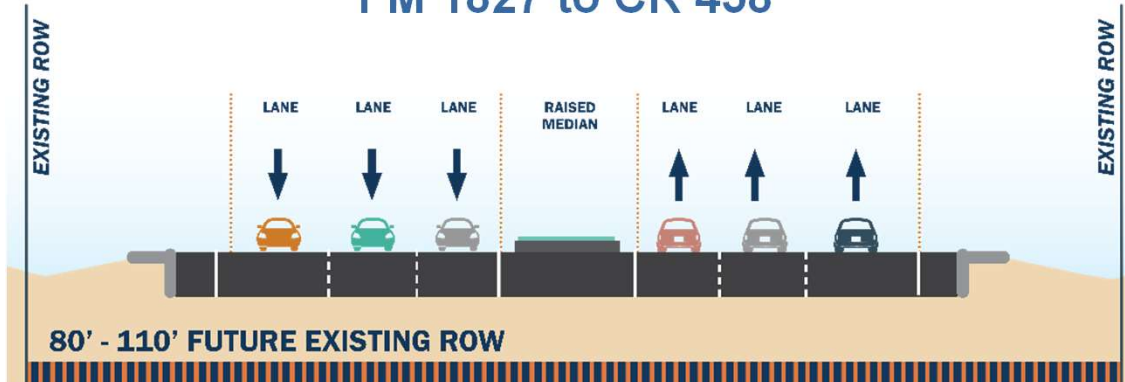




## Existing US 380 Typical Section



### FM 1827 to CR 458\*



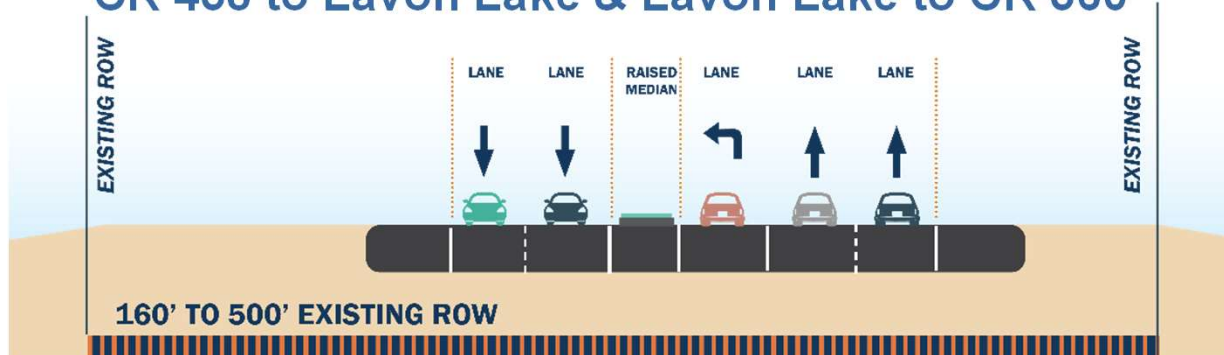
\* IN 2024, TxDOT IS PLANNING A ROAD WIDENING ON THE EXISTING ALIGNMENT:

- Six Lanes
- This typical section uses the future widening as existing conditions.

Current existing roadway conditions:

- Four lanes
- Raised median
- Discontinuous pedestrian accommodations

### CR 458 to Lavon Lake & Lavon Lake to CR 560



Current existing roadway conditions:

- Four lanes
- Raised median (CR 458 to Lavon Lake)
- Continuous flush left turn lane (Lavon Lake to CR 560)
- Discontinuous pedestrian accommodations



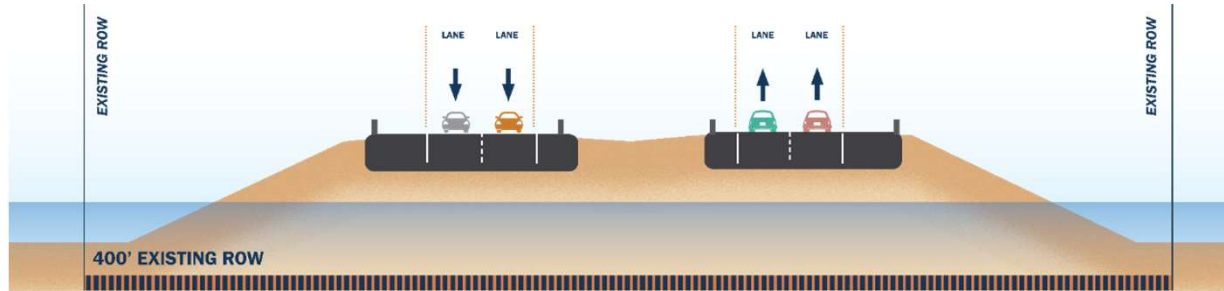




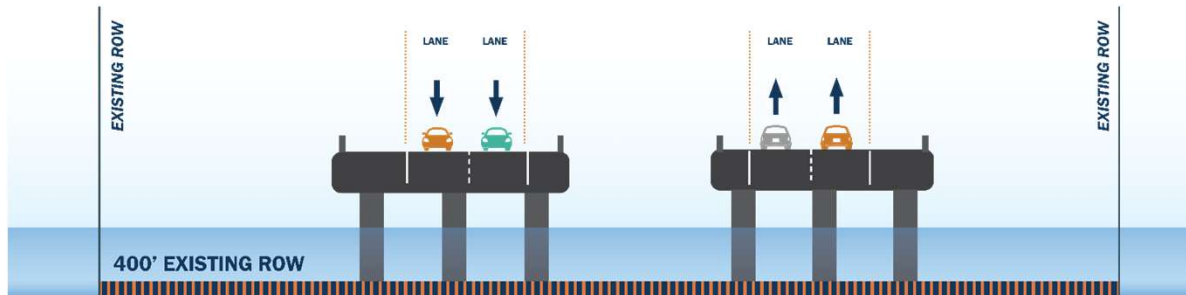
## Existing US 380 Typical Section



### Lavon Lake – Filled Sections

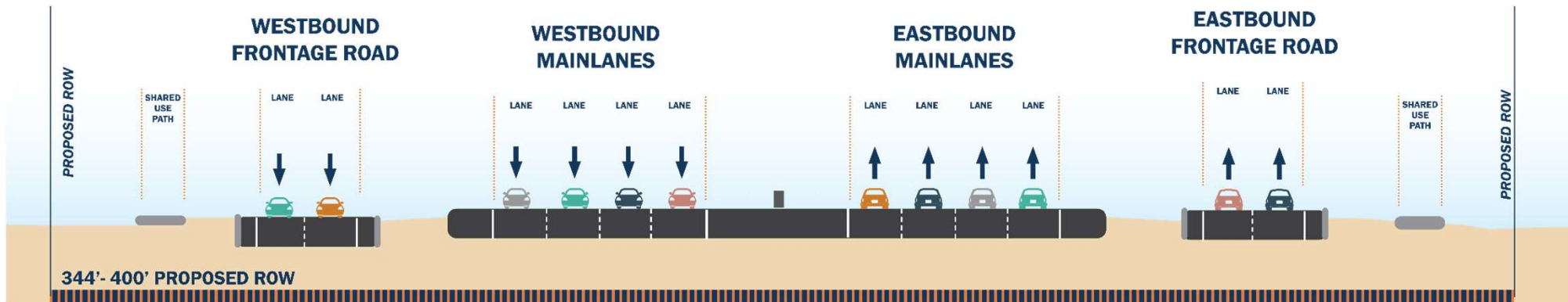


### Lavon Lake – Bridges





## Proposed US 380 Typical Section



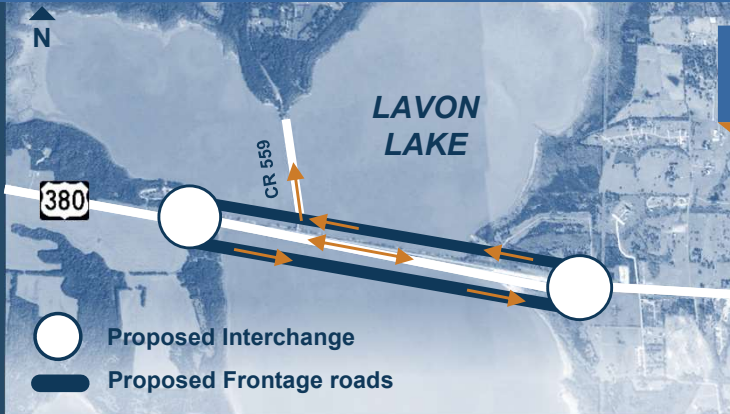
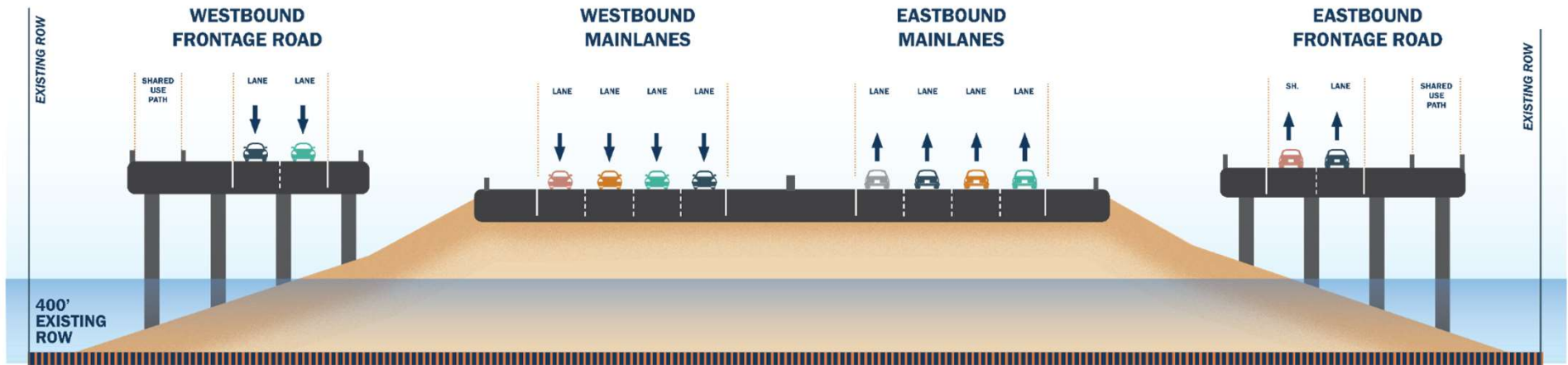
## FM 1827 TO LAVON LAKE and LAVON LAKE TO CR 560 IMPROVEMENTS

- ✓ More Lanes
- ✓ Frontage Roads
- ✓ Shared Use Paths





## Proposed US 380 Typical Section



## LAVON LAKE IMPROVEMENTS

- ✓ More Lanes
- ✓ Frontage Roads
- ✓ Shared Use Paths







## Construction Cost and Ready to Let Date



**\$1.2B**



**Estimated  
Construction Cost**



**2027**



**Anticipated  
Ready to Let Date**





### National Environmental Policy Act (NEPA) Assignment to the Texas Department of Transportation



The environmental review, consultation, and other actions required by applicable Federal environmental laws for this project are being, or have been, carried-out by TxDOT pursuant to 23 U.S.C. 327 and a Memorandum of Understanding dated December 9, 2019, and executed by FHWA and TxDOT.

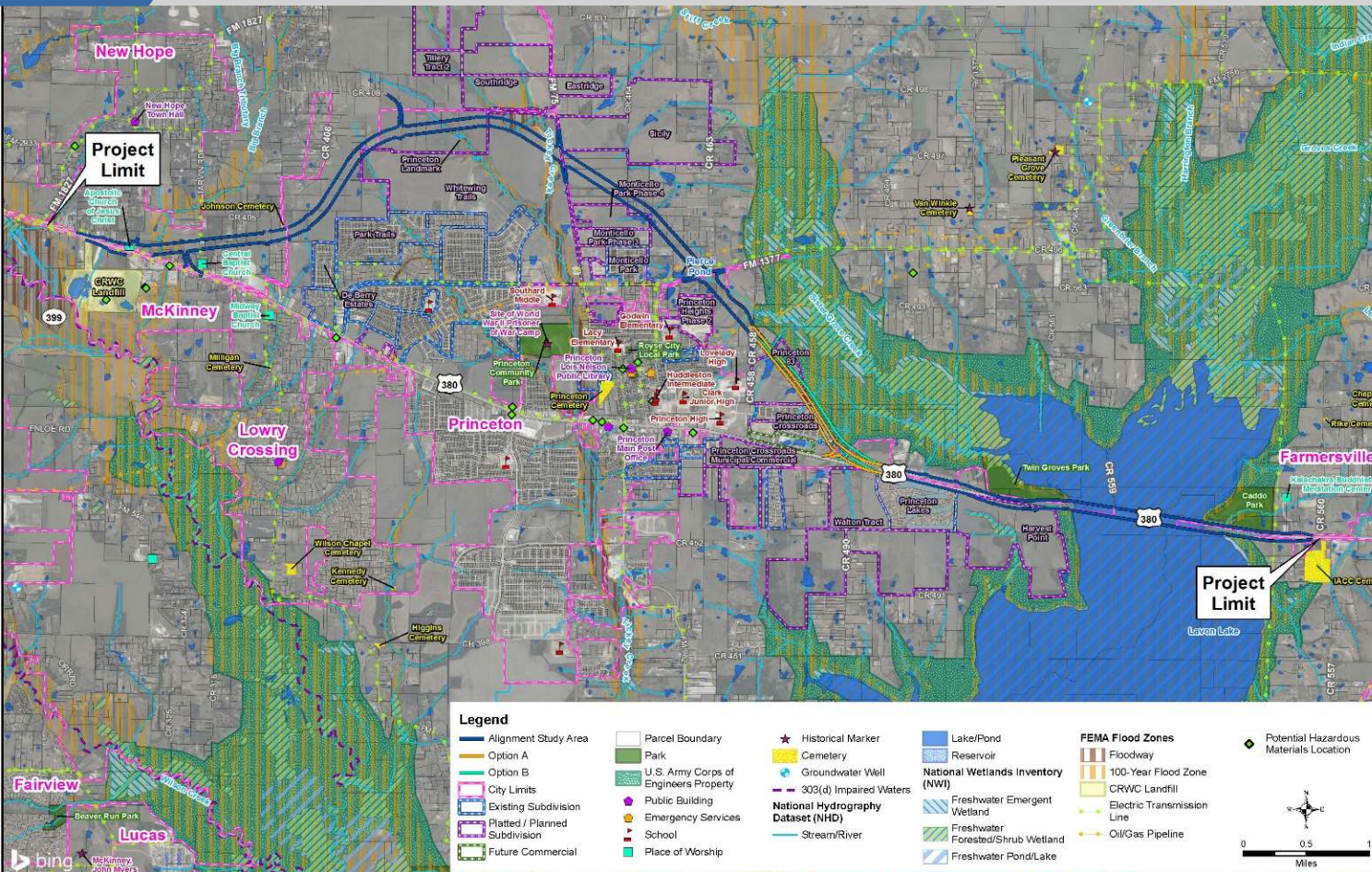
---

La revisión ambiental, consultas y otras acciones requeridas por las leyes ambientales federales aplicables para este proyecto están siendo o han sido, llevado a cabo por TxDOT -en virtud de 23 U.S.C. 327 y un Memorando de Entendimiento fechado el 9 de diciembre del 2019, y ejecutado por la FHWA y TxDOT.





# Environmental Constraints Map



- ✓ Collected Existing GIS Environmental and Land Use Data
- ✓ Field Reconnaissance
- ✓ Input from Stakeholders
- ✓ Used Constraints Data to Develop Alternatives

A larger version of this constraints map can be found online at [www.keepitmovingdallas.com/US380Princeton](http://www.keepitmovingdallas.com/US380Princeton).







## Proposed Right of Way (ROW)



Approximately  
370-375 acres  
of new ROW would be  
required



Potential commercial  
and/or residential  
displacements



All ROW acquisition would  
be completed in  
accordance with the  
Uniform Relocation  
Assistance and Real  
Property Acquisition  
Policies Act of 1970, as  
amended





## Project Timeline



*We are here!*





## We Request Your Feedback



# PLEASE SUBMIT YOUR COMMENTS BY AUGUST 17, 2022

Use any of the methods below:



### E-MAIL

Stephen.Endres  
@txdot.gov



### ONLINE COMMENT FORM



[keepitmoving  
dallas.com/  
US380  
Princeton](https://keepitmovingdallas.com/US380Princeton)



### MAIL

TxDOT  
Dallas District Office  
4777 East Highway 80  
Mesquite, Texas  
75150



### VOICE MAIL

800-588-8017

For general questions about the presentation or the project, please contact:

TxDOT Project Manager Stephen Endres, PE  
[Stephen.Endres@txdot.gov](mailto:Stephen.Endres@txdot.gov) | 214.320.4469.







# Thank you!

**US 380 PRINCETON**

**FROM FM 1827 TO CR 560  
COLLIN COUNTY, TEXAS**

US 380 | CSJs: 0135-04-036, 0135-03-056, 0135-16-002

August 2, 2022

