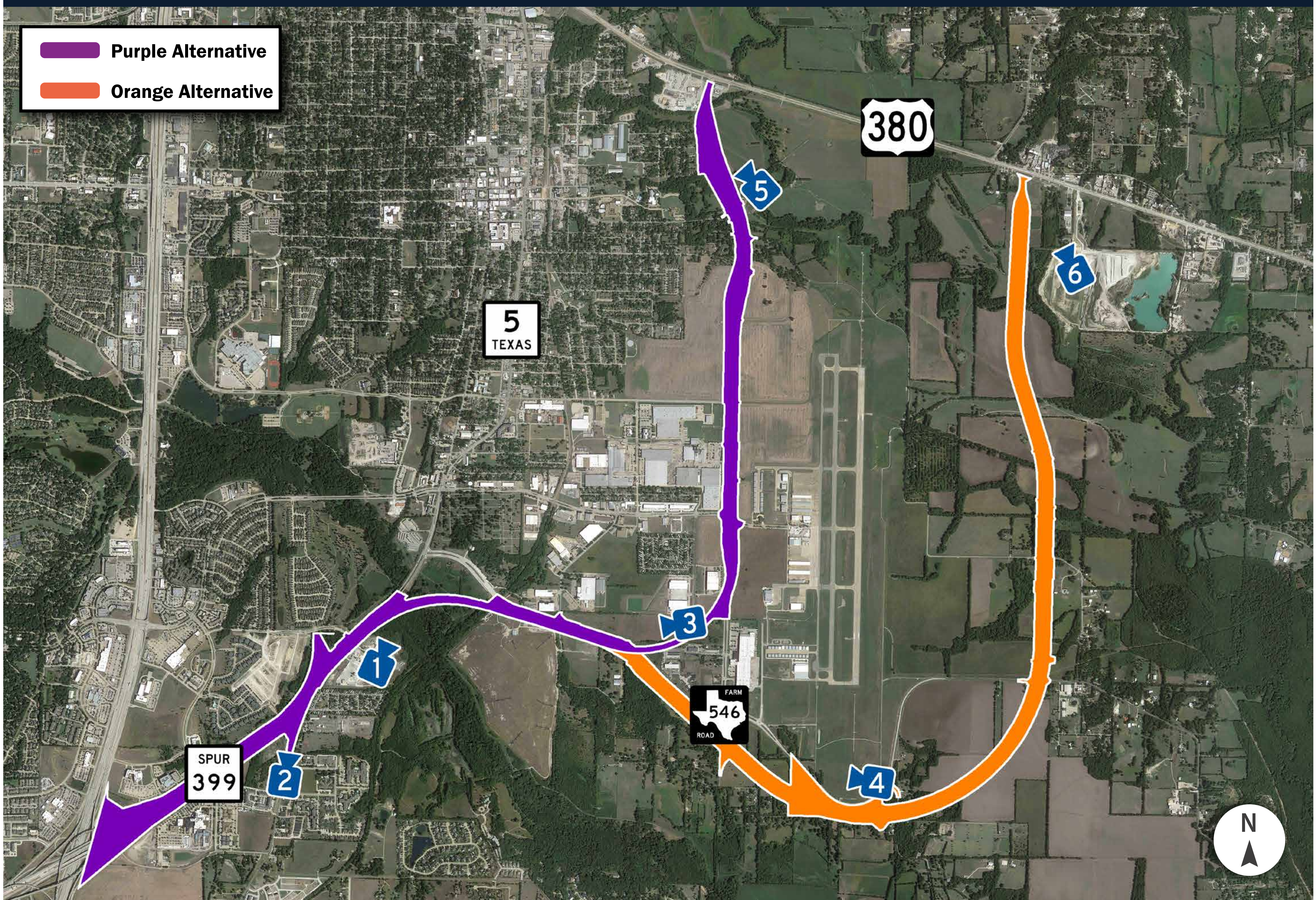




TEXAS DEPARTMENT OF TRANSPORTATION

WHAT A FUTURE FREEWAY COULD LOOK LIKE





TEXAS DEPARTMENT OF TRANSPORTATION

PURPLE & ORANGE ALTERNATIVE LOOKING NORTH FROM STEWART ROAD



PURPLE & ORANGE ALTERNATIVE LOOKING NORTH FROM SH 5



THESE ILLUSTRATIVE RENDERINGS ARE CONCEPTUAL AND SUBJECT TO CHANGE.

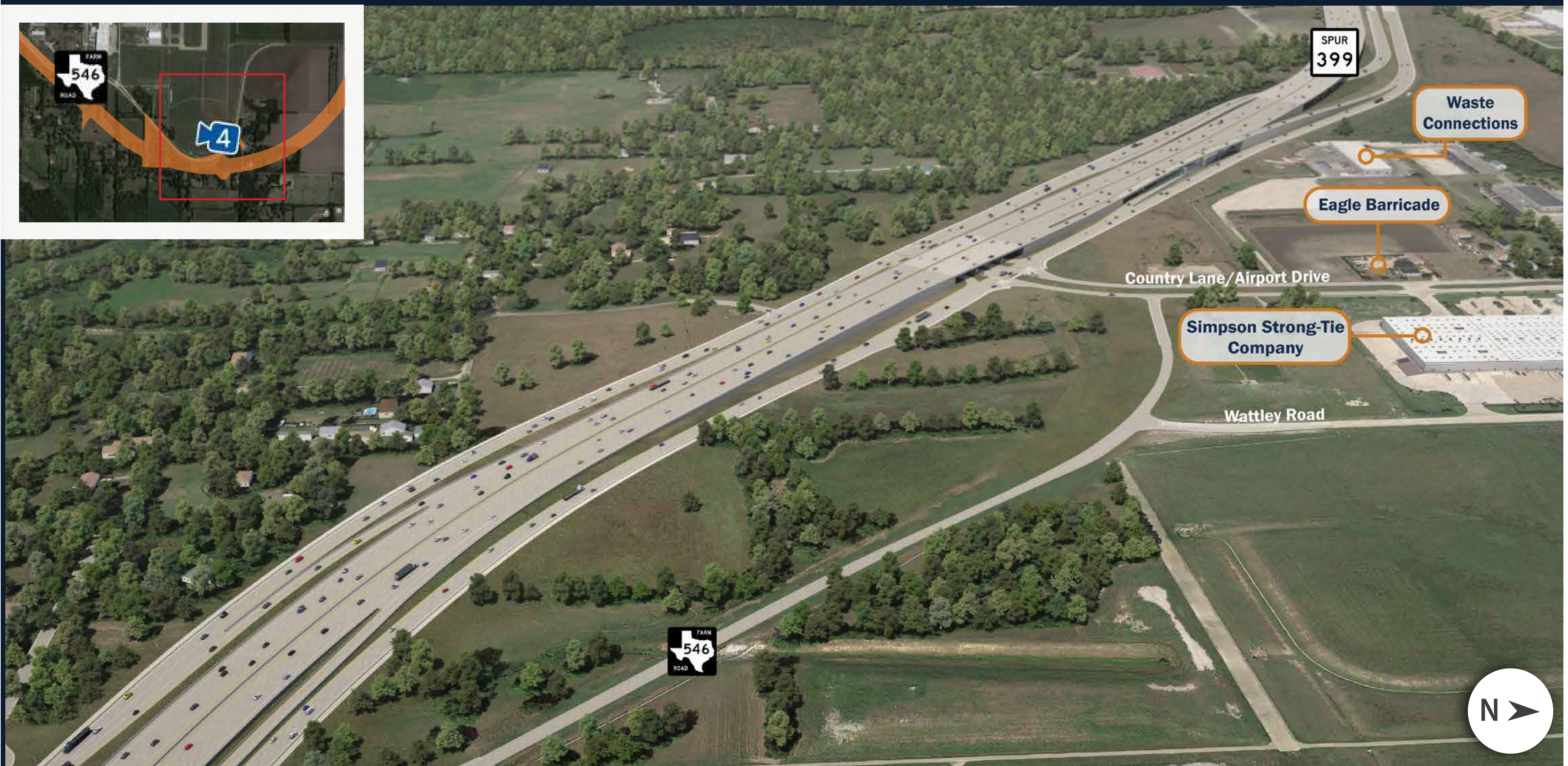


TEXAS DEPARTMENT OF TRANSPORTATION

PURPLE ALTERNATIVE LOOKING WEST TOWARDS FM 546



ORANGE ALTERNATIVE LOOKING WEST AT AIRPORT DRIVE



THESE ILLUSTRATIVE RENDERINGS ARE CONCEPTUAL AND SUBJECT TO CHANGE.



TEXAS DEPARTMENT OF TRANSPORTATION

PURPLE ALTERNATIVE LOOKING WEST AT US 380/SPUR 399 INTERSECTION



ORANGE ALTERNATIVE LOOKING WEST AT US 380/SPUR 399 INTERSECTION



THESE ILLUSTRATIVE RENDERINGS ARE CONCEPTUAL AND SUBJECT TO CHANGE.