



# Public Meeting #2

Farm to Market Road (FM) 455  
Feasibility Study

From Dallas Parkway to Shady Brook Lane  
in Collin County, Texas

---







HELP

# #EndTheStreakTX

End the streak of daily deaths on Texas roadways.

[TxDOT.gov](https://www.txdot.gov) (Keyword: #EndTheStreakTX)



#EndTheStreakTX Toolkit





**Inform the public of study status and present recommendations.**

**Describe the study so that the public can determine how they may be affected.**

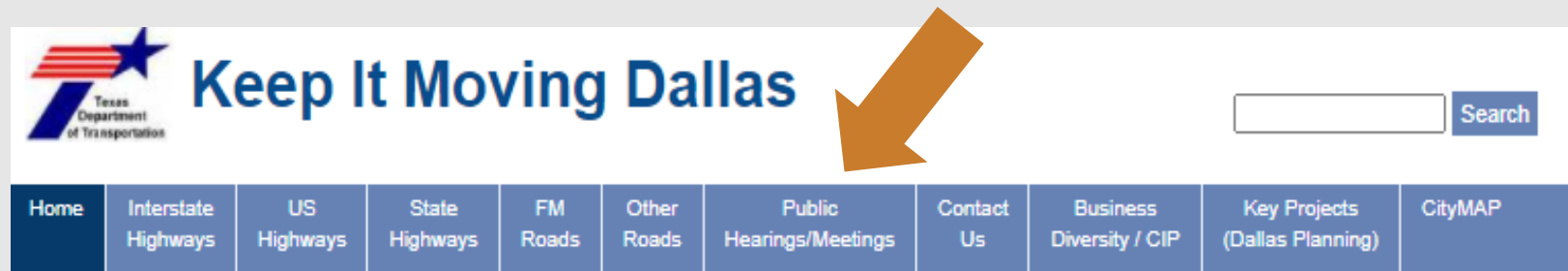
**Offer the public an opportunity to ask questions and provide input.**

**Develop a record of public participation.**



## WEBSITE:

- [www.keepitmovingdallas.com/projects/fm-roads/fm455FS](http://www.keepitmovingdallas.com/projects/fm-roads/fm455FS)
- [www.keepitmovingdallas.com](http://www.keepitmovingdallas.com)  
Under “Public Hearings/Meetings”





# Study Area



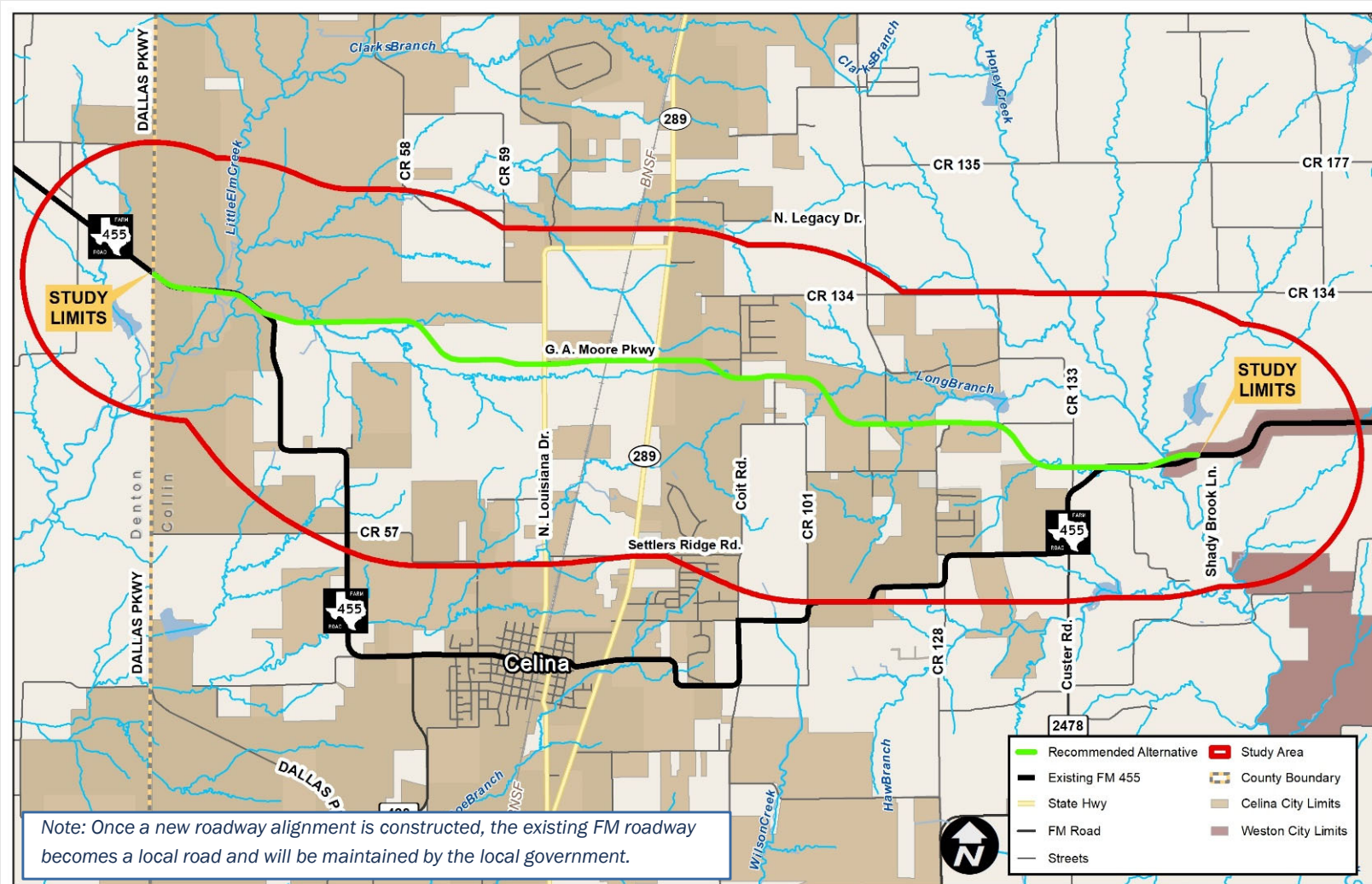
## STUDY LIMITS:

FM 455 from Dallas Parkway to Shady Brook Lane

## STUDY LENGTH:

Approximately 9 miles

The feasibility study analyzes potential roadway alignment options for the FM 455 corridor, including improving existing alignments and constructing possible new corridor alignment locations.

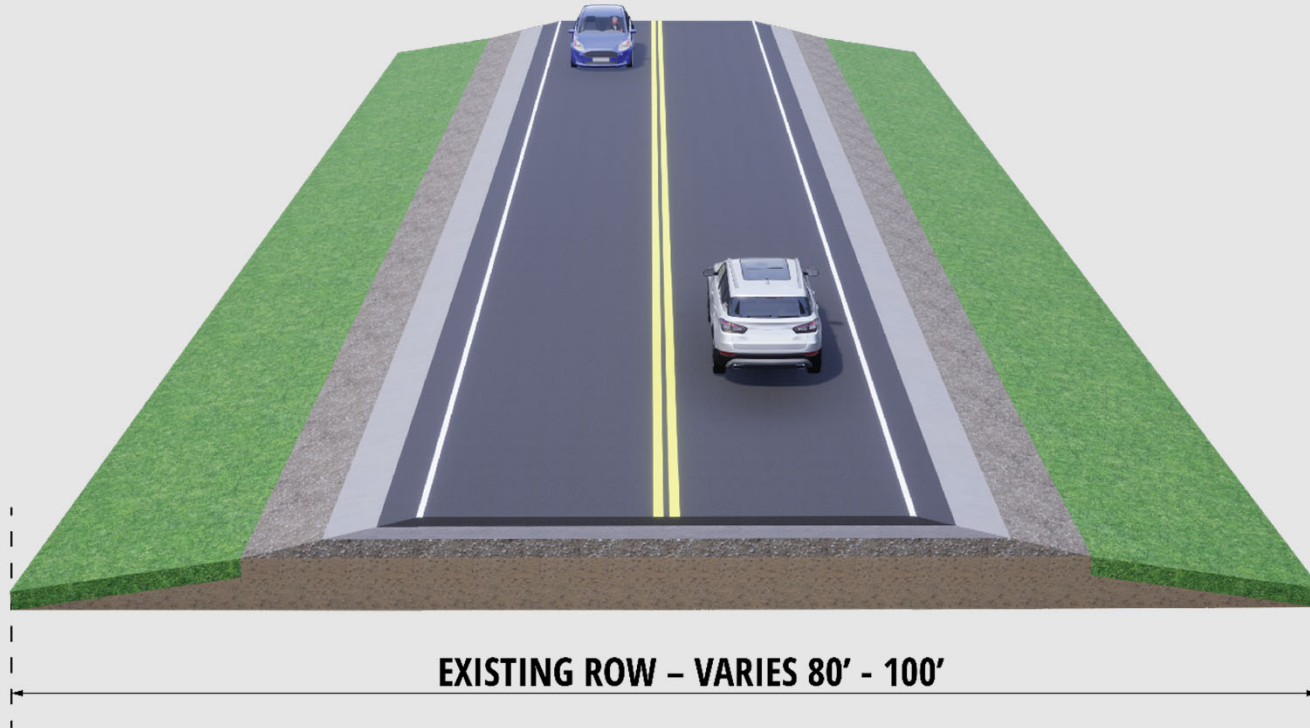




The study **purpose** is to identify and evaluate FM 455 roadway options to:

- ▶ Improve traffic operations
- ▶ Increase mobility and safety
- ▶ Enhance local and regional connectivity

The study is **needed** because local development and population growth continue to increase, resulting in higher traffic volumes, reduced mobility and safety conditions, and inefficient roadway connections.



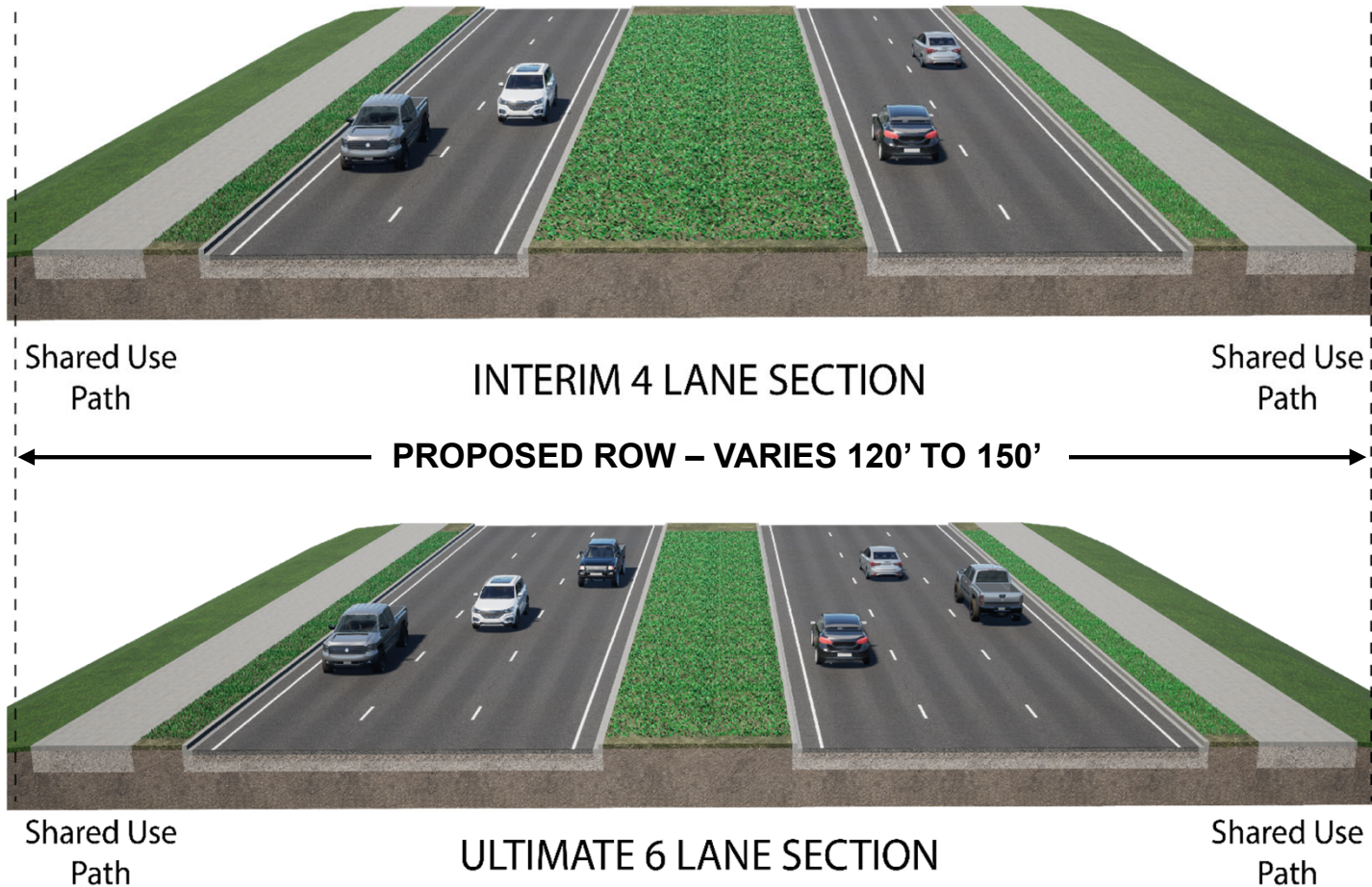
- Mainly consists of two 12-foot-wide rural lanes
- Two-foot-wide shoulders
- No center raised median
- No sidewalks and shared-use paths
- No grade separated intersections
- At-grade railroad crossings



# Proposed Typical Section

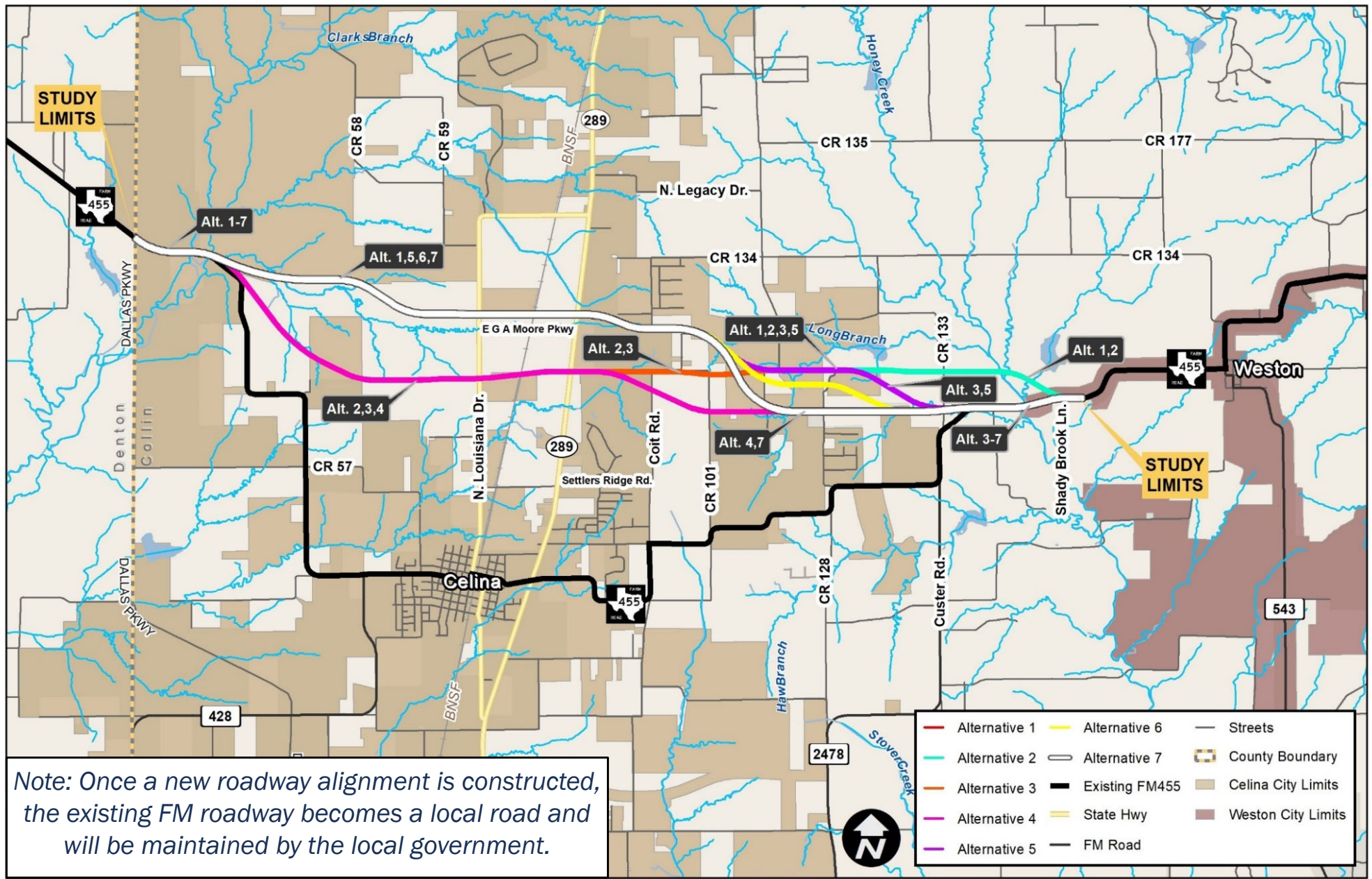


- Construct an urban interim four-lane (ultimate six-lane) roadway
- Lane widths vary from 11-foot to 12-foot-wide lanes depending on ROW restrictions
- Proposed 10-foot shared use paths and a variable-width raised median
- Turn lanes, where applicable, at side streets and intersections
- New location roadway at portions of proposed alignments





# Preliminary Alternatives



**This map can be viewed full size on the study website.**



## Preliminary Alternatives



Purpose and Need



Engineering Requirements



Potential Property Impacts and  
Right-of-Way Requirements



Environmental and Natural  
Resource Constraints



Public, Stakeholder, and  
Agency Input



Community Development



## Recommended Alternative

# How was the Recommended Alternative Determined?



Closely follows Celina's Thoroughfare Plan.



Minimizes required ROW by following future planned corridor alignments.



Reduces potential for future displacements.



Lower construction cost by utilizing existing pavement to be built by others.



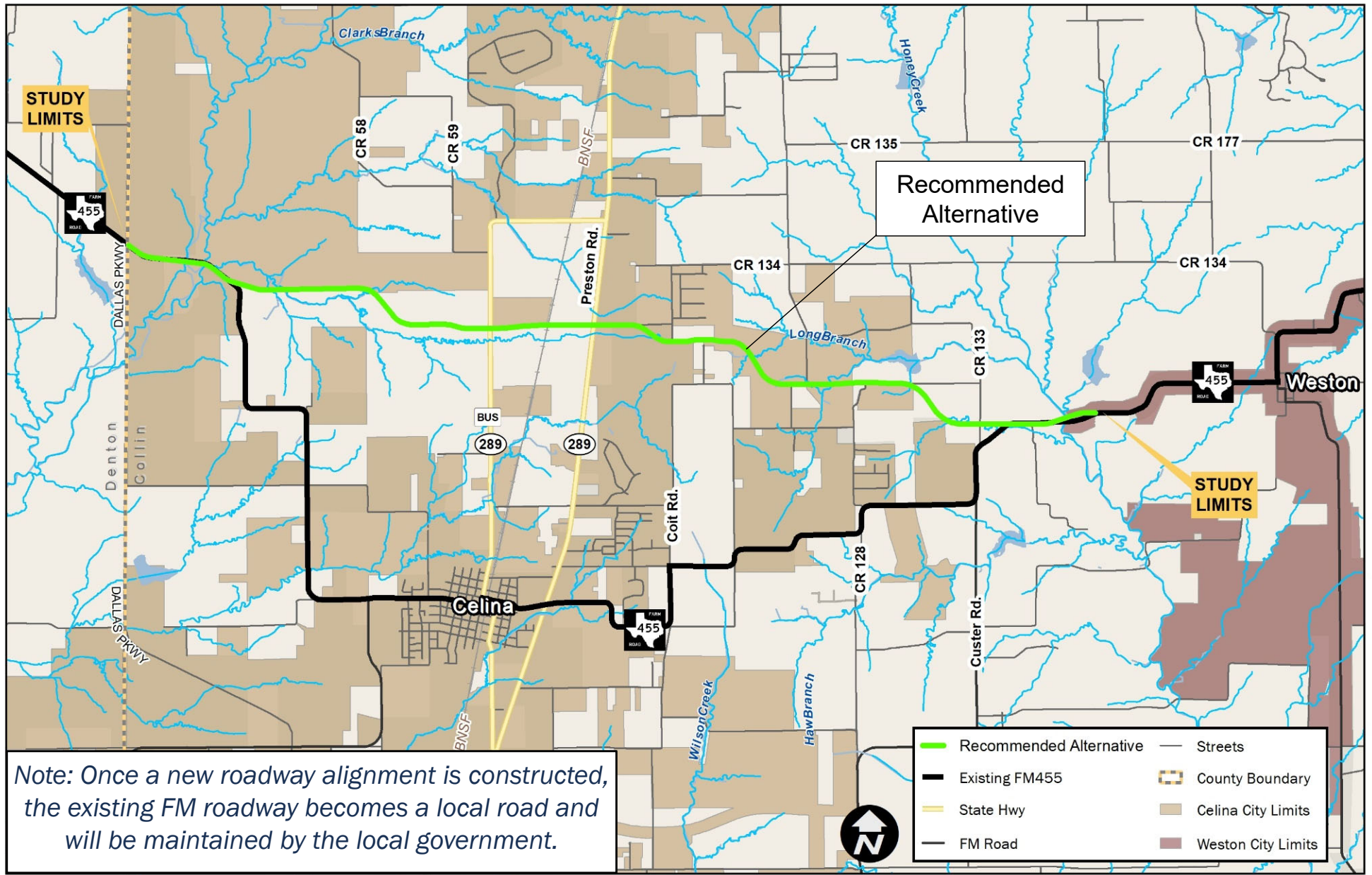
Fewer environmental impacts to water features.



**For more detailed information, see the evaluation matrix posted on the study website.**



# Recommended Alternative



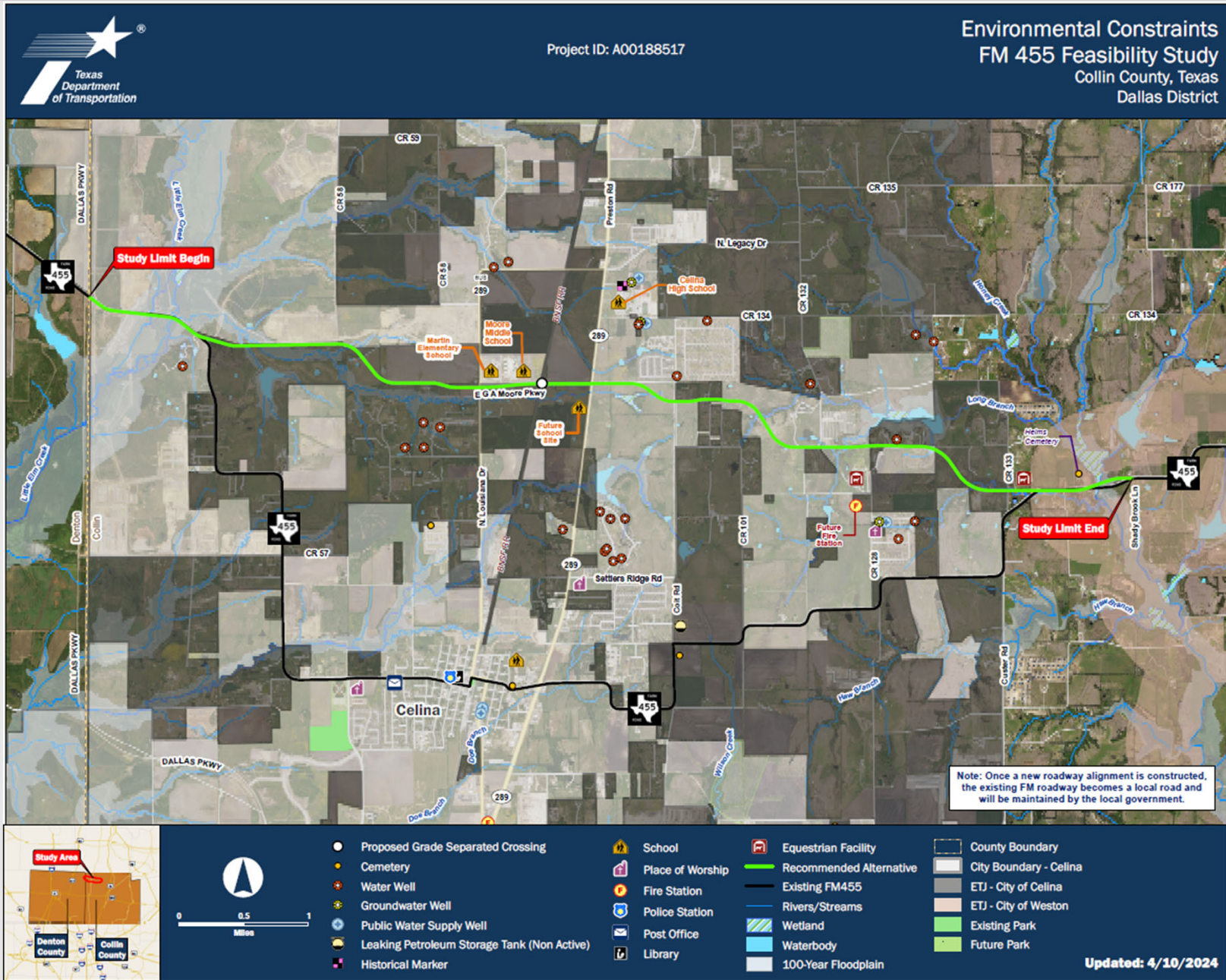
The full concept schematic of the recommended alternative can be viewed on the study website.



***The environmental review, consultation, and other actions required by applicable Federal environmental laws for this project are being, or have been, carried-out by TxDOT pursuant to 23 U.S.C. 327 and a Memorandum of Understanding dated Dec. 9, 2019, and executed by FHWA and TxDOT.***

***La revisión ambiental, consultas y otras acciones requeridas por las leyes ambientales federales aplicables para este proyecto están siendo o han sido, llevado a cabo por TxDOT - en virtud de 23 U.S.C. 327 y un Memorando de Entendimiento fechado el 9 de dic. del 2019, y ejecutado por la FHWA y TxDOT.***





**This map can be viewed full size on the study website.**





## Feasibility Study Timeline\*

2022-2023

Preliminary  
Engineering &  
Environmental  
Data Collection

Spring 2023

Explore &  
Analyze  
Alternative  
Solutions

June 20, 2023

Public Meeting #1

Fall 2023

Determine the  
Recommended  
Alternative

April 30, 2024

Public Meeting #2

Present the  
Recommended  
Alternative

Summer 2024

Complete  
Feasibility Study



**WE ARE HERE**

## Next Steps after this Feasibility Study



\* Subject To Change



Please submit your comments regarding the design modifications presented in this public meeting by using any of the four methods below by our deadline,  
**Wednesday, May 15, 2024.**



### Comment Online

[www.keepitmovingdallas.com/  
projects/fm-roads/fm455FS](http://www.keepitmovingdallas.com/projects/fm-roads/fm455FS)



### Email Us

[Stephen.Endres@txdot.gov](mailto:Stephen.Endres@txdot.gov)



### Mail-in Comments

TxDOT Dallas District Office  
Attn: Stephen Endres, P.E.  
4777 E. Highway 80  
Mesquite, TX 75150



### Leave a Voicemail

(469) 920-2505

For general questions about the presentation or the project, please contact TxDOT Project Manager, Stephen Endres, P.E. at [Stephen.Endres@txdot.gov](mailto:Stephen.Endres@txdot.gov).



# Thank you for your interest in the FM 455 Feasibility Study

