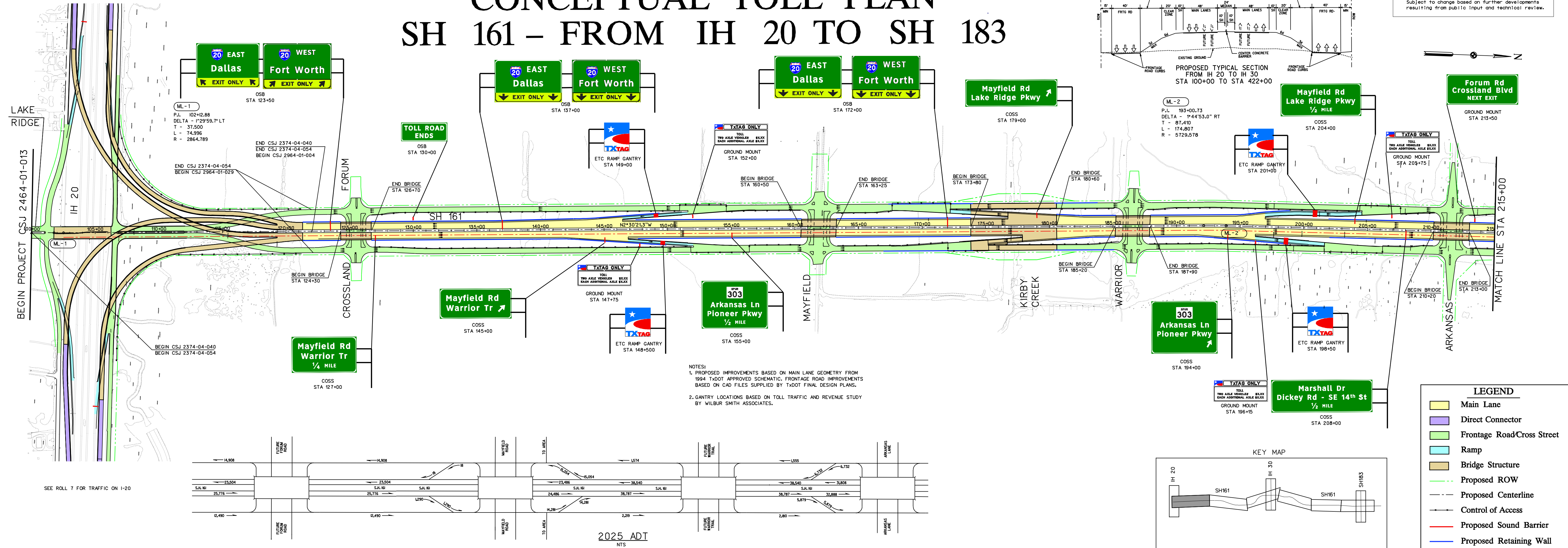


NAME SERIAL NO. XXXXX DATE: REVIEWED BY HNTB: ELIZABETH METTING, P.E. SERIAL NO. 72425 DATE: DATE APPROVED NOT INTENDED FOR CONSTRUCTION, BIDDING OR PERMIT PURPOSES. DATE SUBMITTED DATE REVISED

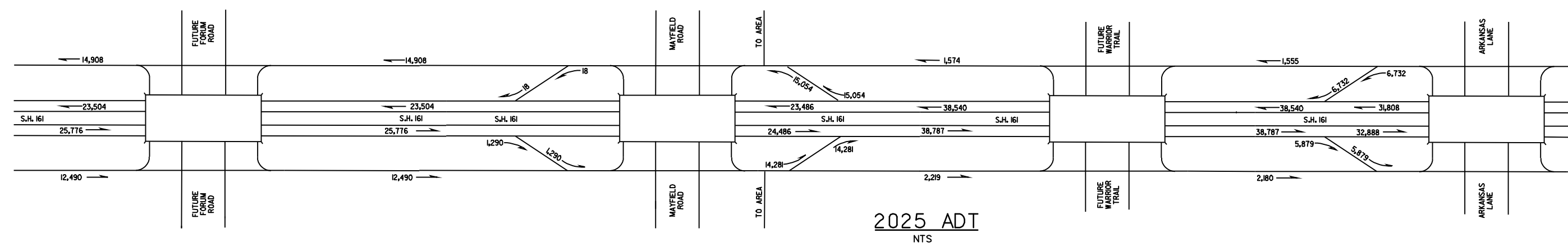
TABLE OF CONTENTS: ROLL PLANPROFILE 1-7

DECEMBER 2005 ROLL 1 OF 7

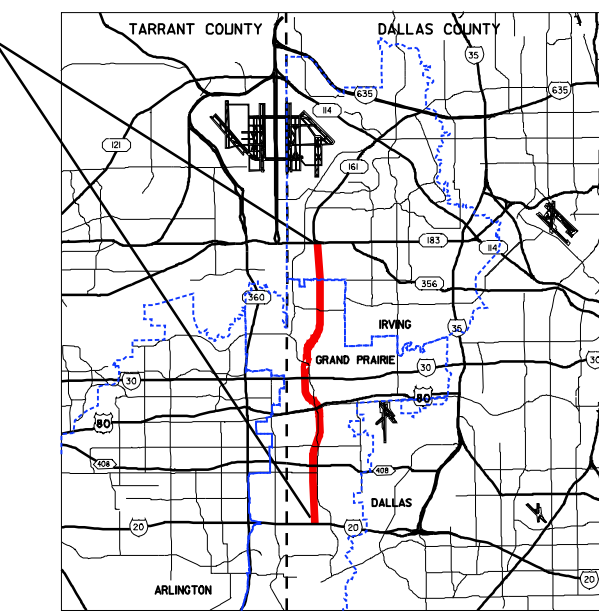
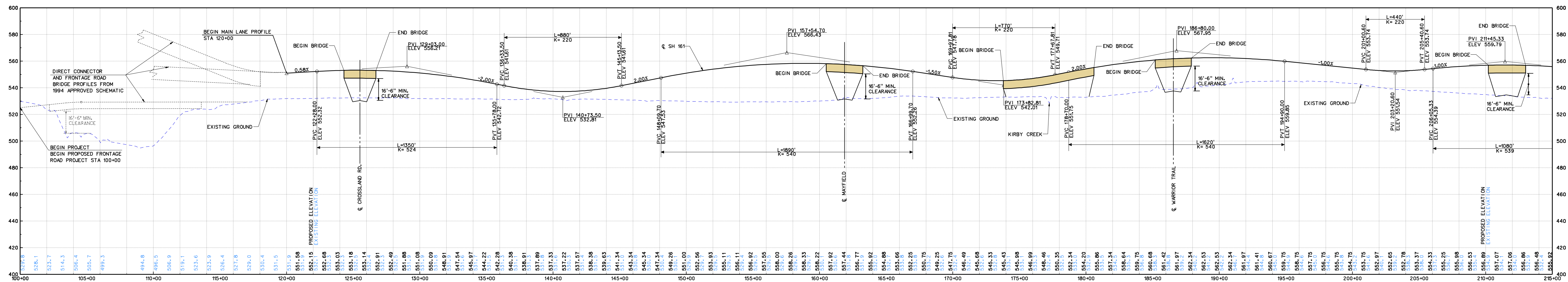
CONCEPTUAL TOLL PLAN SH 161 - FROM IH 20 TO SH 183



NOTES: 1. PROPOSED IMPROVEMENTS BASED ON MAIN LANE GEOMETRY FROM 1994 TxDOT APPROVED SCHEMATIC... 2. GANTRY LOCATIONS BASED ON TOLL TRAFFIC AND REVENUE STUDY BY WILBUR SMITH ASSOCIATES.



TRAFFIC PROJECTIONS SUPPLIED BY NORTH CENTRAL TEXAS COUNCIL OF GOVERNMENTS MOBILITY 2025, 2004 UPDATE, TRAFFIC MODEL USING TOLL SCENARIO.



NAME SERIAL NO. XXXXX DATE: REVIEWED BY HNTB: ELIZABETH METTING, P.E. SERIAL NO. 72425 DATE: DATE APPROVED NOT INTENDED FOR CONSTRUCTION, BIDDING OR PERMIT PURPOSES. DATE SUBMITTED DATE REVISED

TABLE OF CONTENTS: ROLL PLANPROFILE 1-7

DECEMBER 2005 ROLL 1 OF 7