

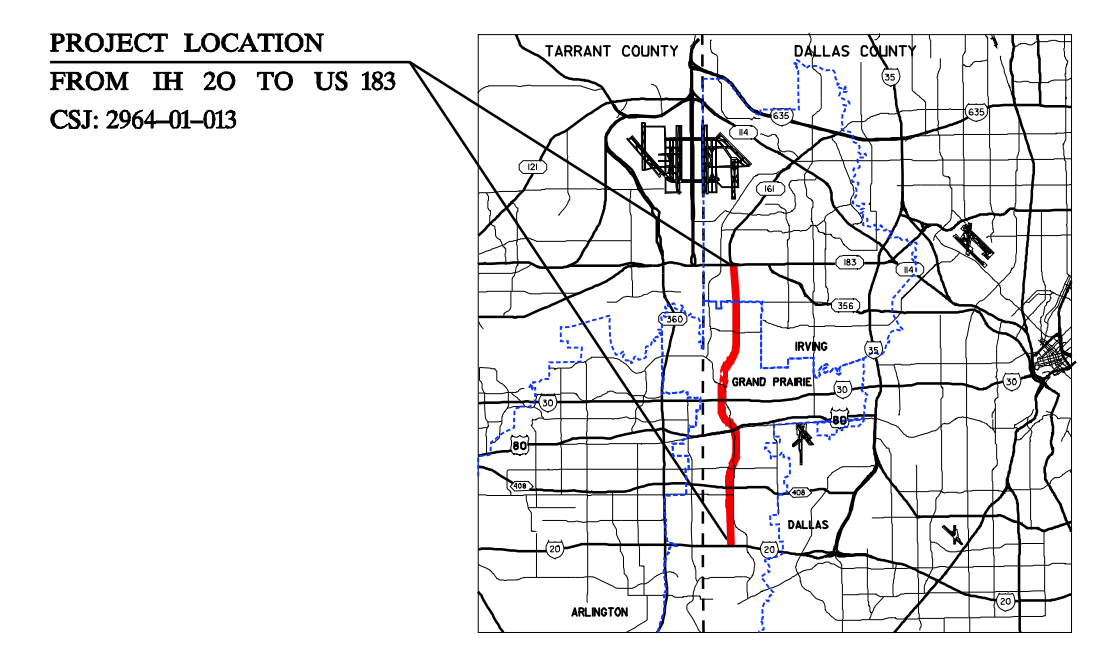
SH 161  
 DALLAS COUNTY

SH 161: FROM IH 20 TO US 183  
 CSJs:  
 2964-01-013 (ENVIRONMENTAL)  
 2964-01-004  
 2964-01-009  
 2964-01-029  
 2964-01-030

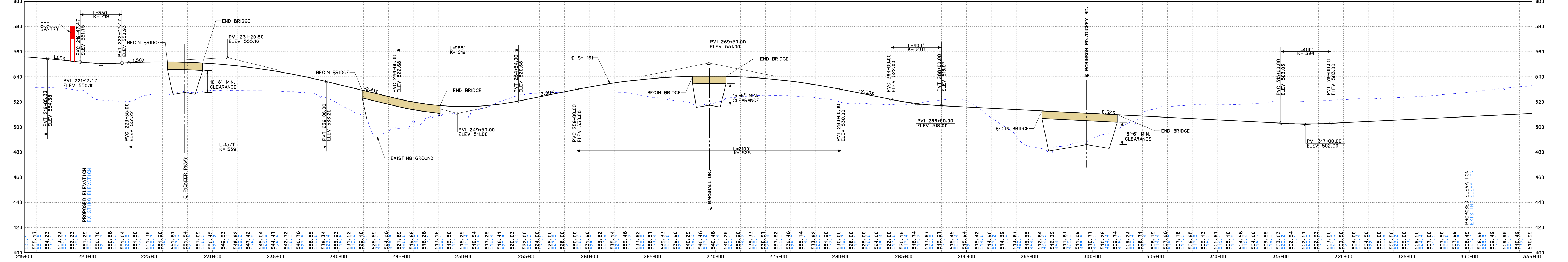
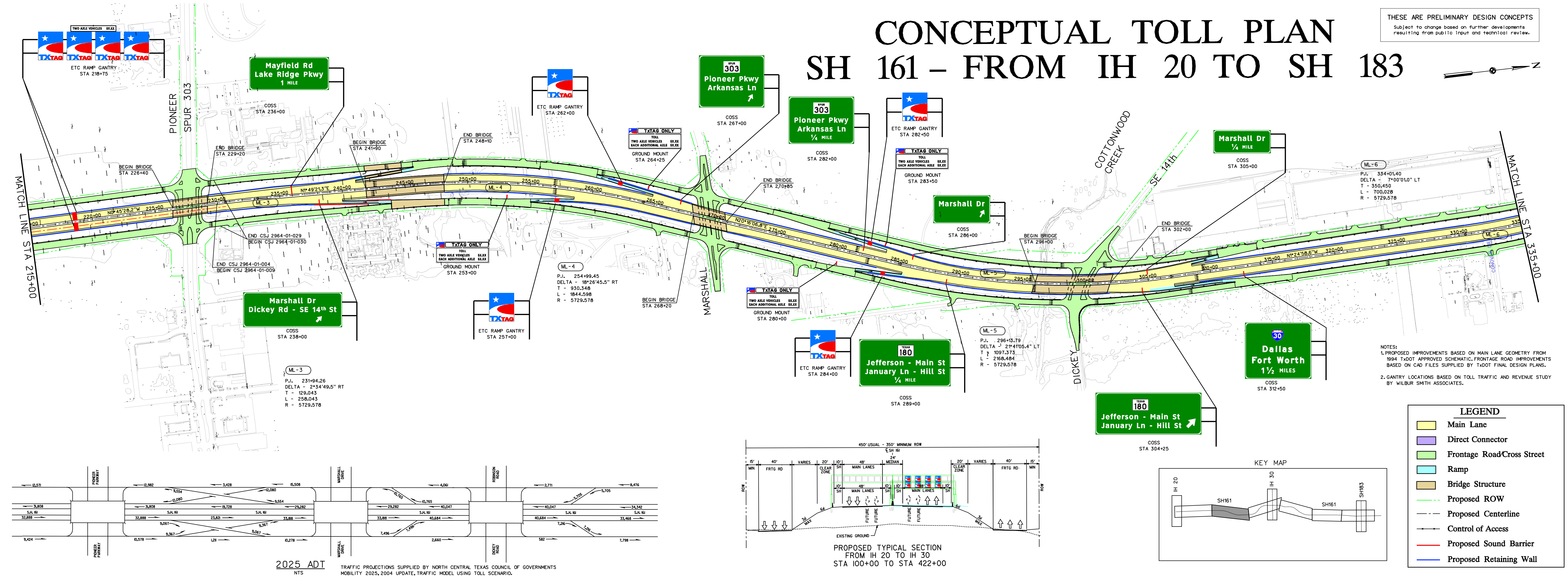
PROJECT LENGTH= 10.8 MILES

**DESIGN SPEED**  
 MAIN LANES - 70 MPH - BASED ON URBAN INTERSTATE FREEWAY  
 RAMPS - 50 MPH - BASED ON MID RANGE  
 DIRECT CONNECTORS - 50 MPH - BASED ON MID RANGE  
 FRONTAGE ROADS - 45 MPH  
 CROSS STREETS - 45 MPH (30 MPH WHERE NOTED)

**HIGHWAY CLASSIFICATION**  
 URBAN FREEWAY



NAME	NAME
SERIAL NO. XXXXX DATE:	SERIAL NO. XXXXX DATE:
REVIEWED BY HNTB: ELIZABETH METTING, P.E.	REVIEWED BY HNTB: ELIZABETH METTING, P.E.
SERIAL NO. 72425 DATE:	SERIAL NO. 72425 DATE:
DATE APPROVED	DATE SUBMITTED
NOT INTENDED FOR CONSTRUCTION, BIDDING OR PERMIT PURPOSES.	DATE REVISED
TABLE OF CONTENTS: PLANPROFILE	ROLL 1-7
DECEMBER 2005	ROLL 2 OF 7



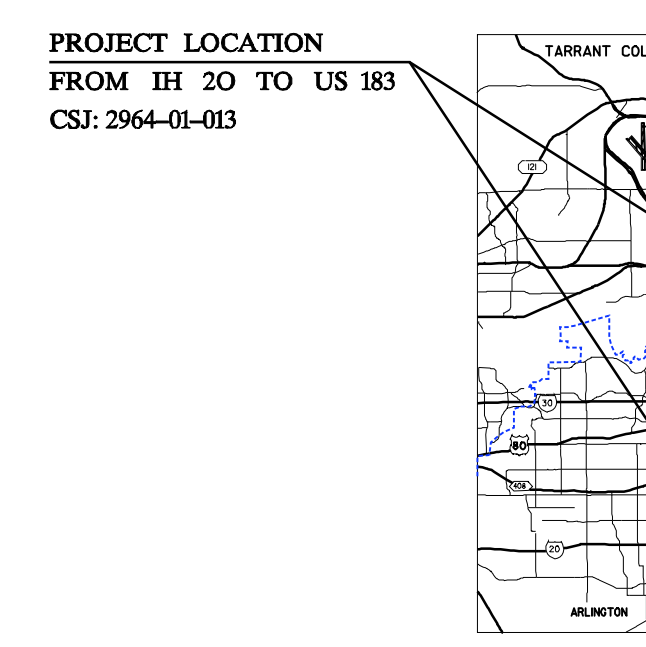
SH 161  
 DALLAS COUNTY

SH 161: FROM IH 20 TO US 183  
 CSJs:  
 2964-01-013 (ENVIRONMENTAL)  
 2964-01-004  
 2964-01-009  
 2964-01-029  
 2964-01-030

PROJECT LENGTH= 10.8 MILES

**DESIGN SPEED**  
 MAIN LANES - 70 MPH - BASED ON URBAN INTERSTATE FREEWAY  
 RAMPS - 50 MPH - BASED ON MID RANGE  
 DIRECT CONNECTORS - 50 MPH - BASED ON MID RANGE  
 FRONTAGE ROADS - 45 MPH  
 CROSS STREETS - 45 MPH (30 MPH WHERE NOTED)

**HIGHWAY CLASSIFICATION**  
 URBAN FREEWAY



NAME	NAME
SERIAL NO. XXXXX DATE:	SERIAL NO. XXXXX DATE:
REVIEWED BY HNTB: ELIZABETH METTING, P.E.	REVIEWED BY HNTB: ELIZABETH METTING, P.E.
SERIAL NO. 72425 DATE:	SERIAL NO. 72425 DATE:
DATE APPROVED	DATE SUBMITTED
NOT INTENDED FOR CONSTRUCTION, BIDDING OR PERMIT PURPOSES.	DATE REVISED
TABLE OF CONTENTS: PLANPROFILE	ROLL 1-7
DECEMBER 2005	ROLL 2 OF 7