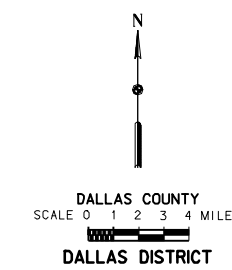
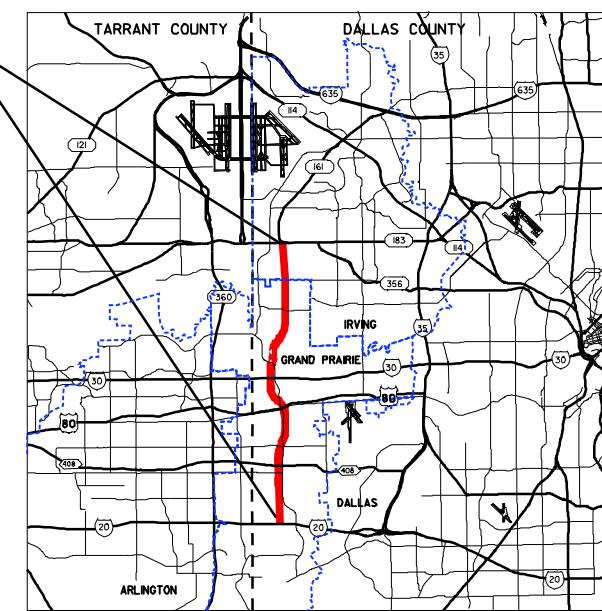


PROJECT LOCATION
FROM IH 20 TO US 183
CSJ: 2964-01-013



NAME SERIAL NO. XXXXX DATE: _____

REVIEWED BY HNTB:
ELIZABETH METTING, P.E.

SERIAL NO. 72425
DATE: _____

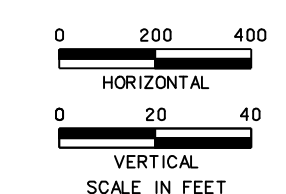
DATE APPROVED

NOT INTENDED FOR
CONSTRUCTION, BIDDING
OR PERMIT PURPOSES.

DATE SUBMITTED

DATE REVISED

TABLE OF CONTENTS:
PLANPROFILE ROLL
1-7



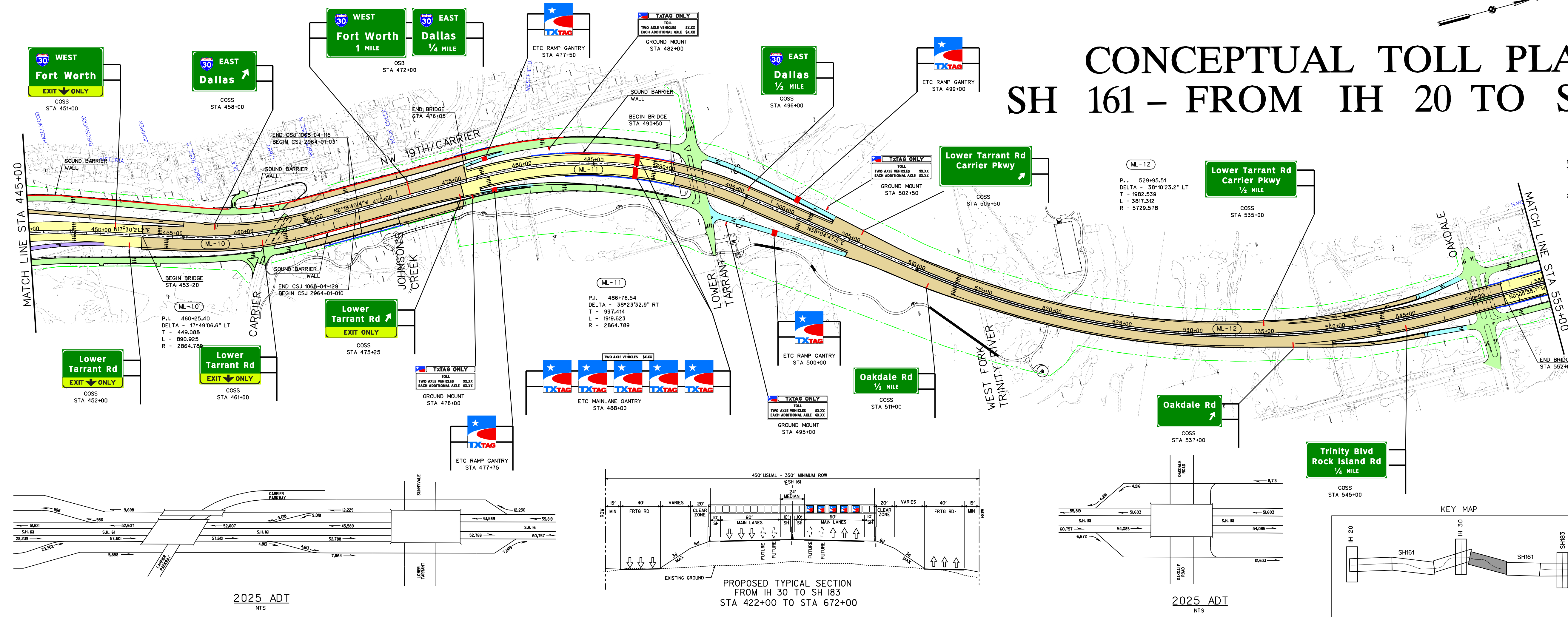
DECEMBER 2005

ROLL 4 OF 7

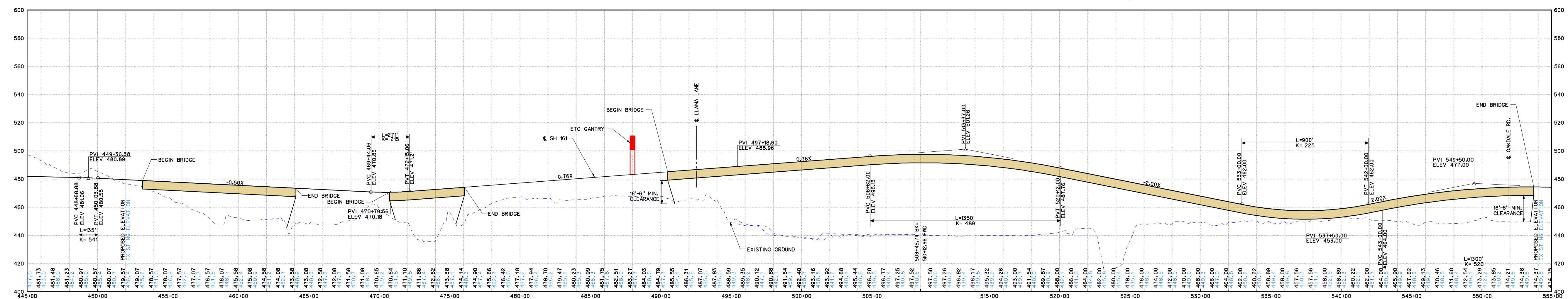
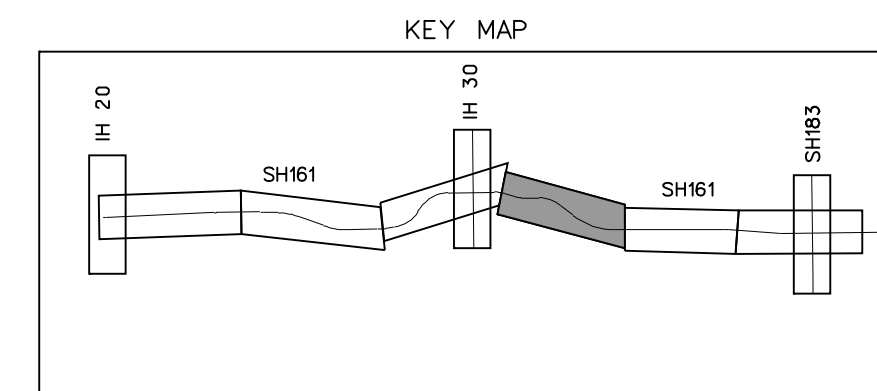
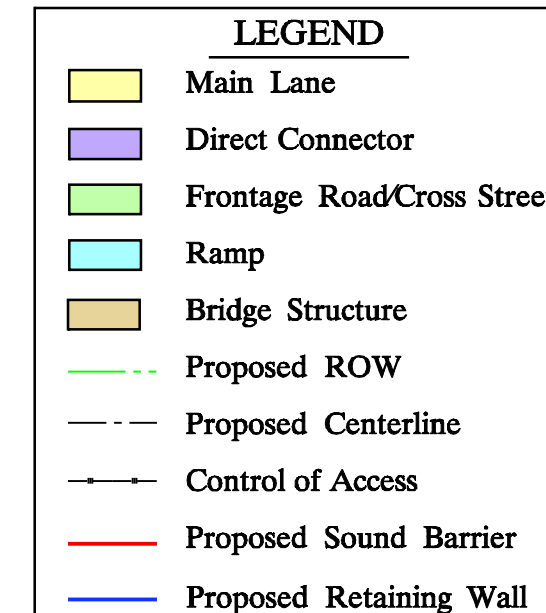
CONCEPTUAL TOLL PLAN

SH 161 - FROM IH 20 TO SH 183

THESE ARE PRELIMINARY DESIGN CONCEPTS
Subject to change based on further developments
resulting from public input and technical review.

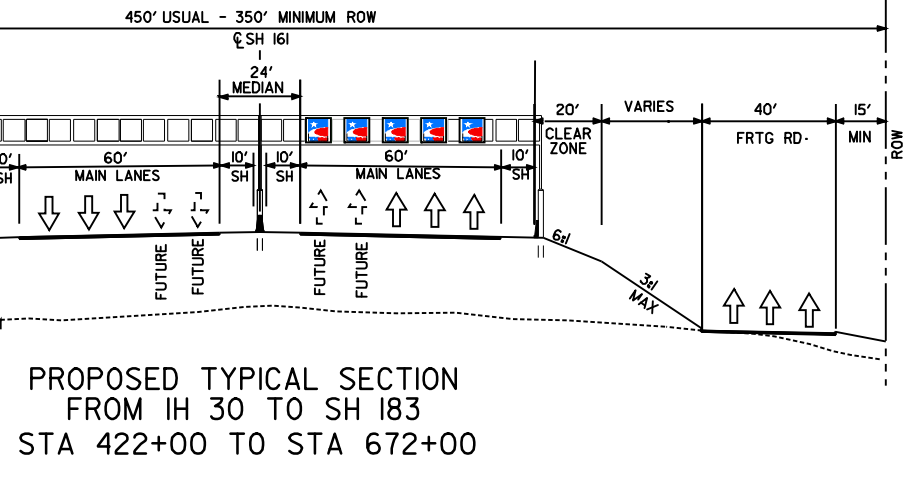


NOTES:
1. PROPOSED IMPROVEMENTS BASED ON MAIN LANE GEOMETRY FROM 1994 TxDOT APPROVED SCHEMATIC. FRONTAGE ROAD IMPROVEMENTS BASED ON CAD FILES SUPPLIED BY TxDOT FINAL DESIGN PLANS.
2. GANTRY LOCATIONS BASED ON TOLL TRAFFIC AND REVENUE STUDY BY WILBUR SMITH ASSOCIATES.

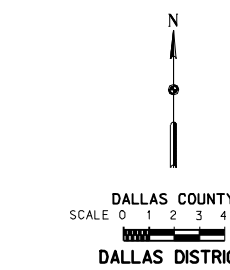
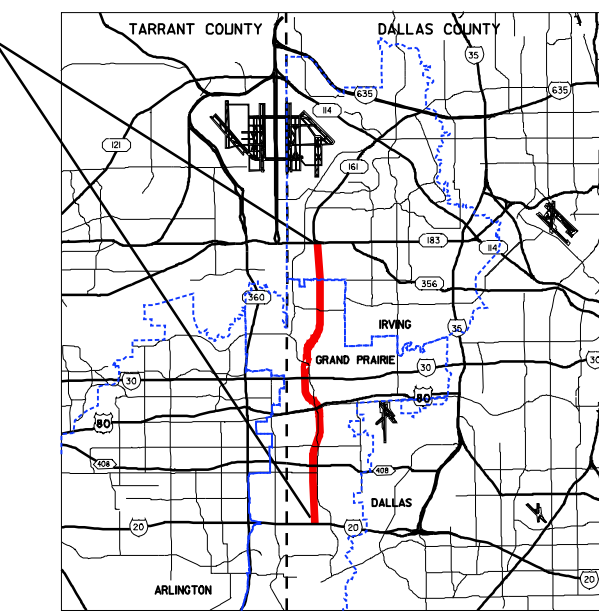


2025 ADT
TRAFFIC PROJECTIONS SUPPLIED BY NORTH CENTRAL TEXAS COUNCIL OF GOVERNMENTS
MOBILITY 2025, 2004 UPDATE, TRAFFIC MODEL USING TOLL SCENARIO.

2025 ADT
TRAFFIC PROJECTIONS SUPPLIED BY NORTH CENTRAL TEXAS COUNCIL OF GOVERNMENTS
MOBILITY 2025, 2004 UPDATE, TRAFFIC MODEL USING TOLL SCENARIO.



PROJECT LOCATION
FROM IH 20 TO US 183
CSJ: 2964-01-013



NAME SERIAL NO. XXXXX DATE: _____

REVIEWED BY HNTB:
ELIZABETH METTING, P.E.

SERIAL NO. 72425
DATE: _____

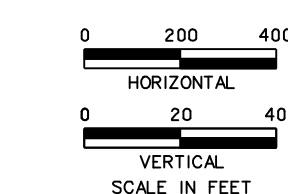
DATE APPROVED

NOT INTENDED FOR
CONSTRUCTION, BIDDING
OR PERMIT PURPOSES.

DATE SUBMITTED

DATE REVISED

TABLE OF CONTENTS:
PLANPROFILE ROLL
1-7



DECEMBER 2005

ROLL 4 OF 7