

DALLAS DISTRICT
Design Schematic

William L. Hale, P.E.

District Engineer

IH 35E

From IH 635

To US 190

Sta. 625+00 to Sta. 913+00

Dallas County

CSJ: 0196-03-138

Functional Class.1: Interstate

Project Length = 5.45 miles

Design Speed:

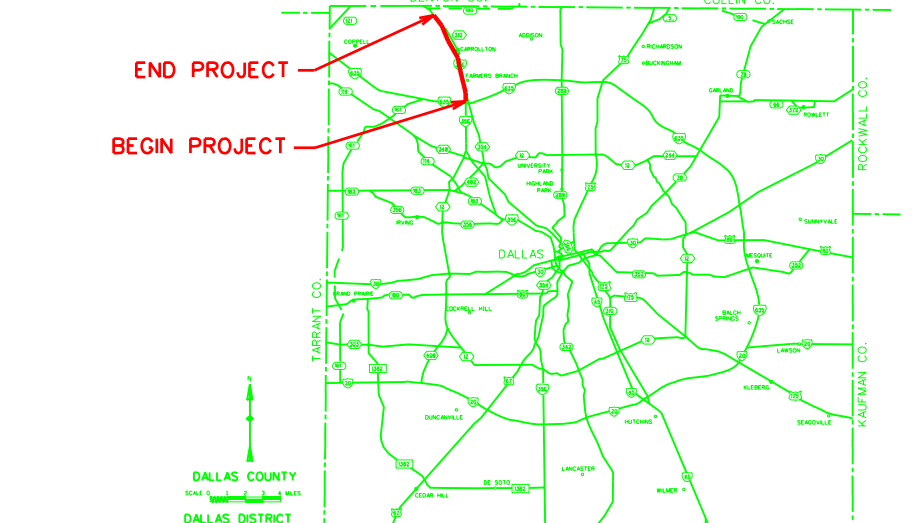
Mainlanes 70 mph

Ramps/Direct Connectors 40 mph

Frontage Rds 40 mph

HOV Connectors 40 mph

Intersecting Sts/Frankford Connectors 30 mph



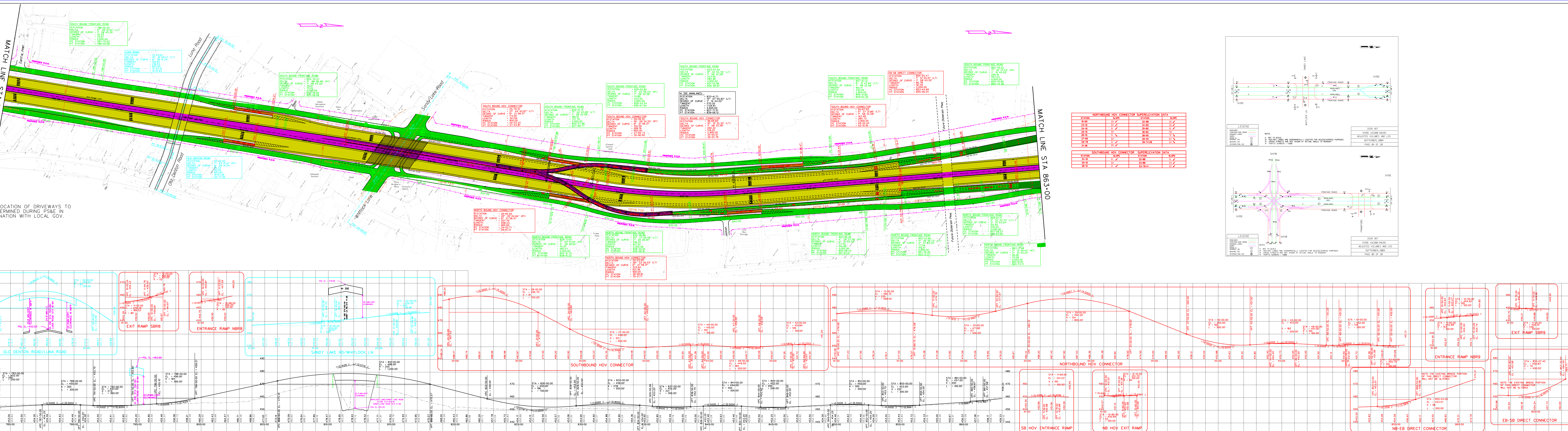
Scale:
Horizontal 1: 200
Vertical 1:20

© 2005 by Texas Department of Transportation
all rights reserved

June 2005

SCHEMATIC PREPARED BY:
Michael R. Ransom
75050 06-01-05

Roll 3 of 6



DALLAS DISTRICT
Design Schematic

William L. Hale, P.E.

District Engineer

IH 35E

From IH 635

To US 190

Sta. 625+00 to Sta. 913+00

Dallas County

CSJ: 0196-03-138

Functional Class.1: Interstate

Project Length = 5.45 miles

Design Speed:

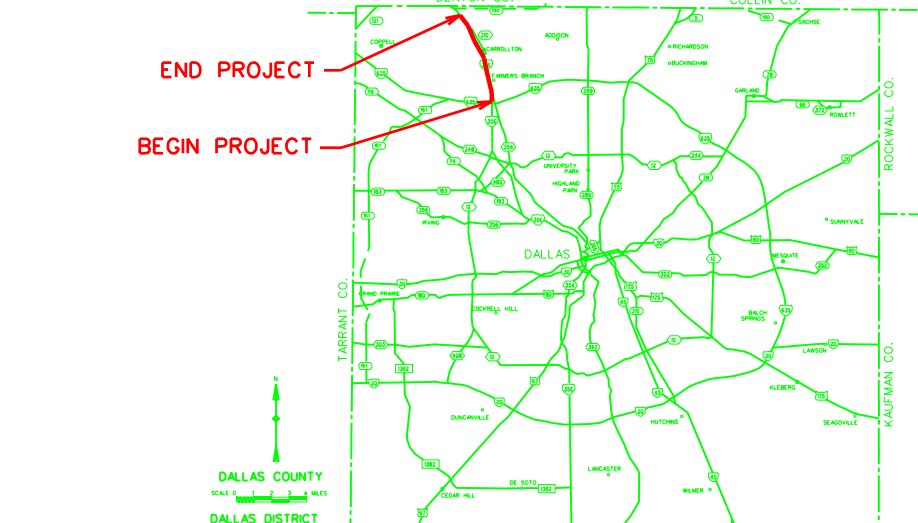
Mainlanes 70 mph

Ramps/Direct Connectors 40 mph

Frontage Rds 40 mph

HOV Connectors 40 mph

Intersecting Sts/Frankford Connectors 30 mph



Scale:
Horizontal 1: 200
Vertical 1:20

© 2005 by Texas Department of Transportation
all rights reserved

June 2005

SCHEMATIC PREPARED BY:
Michael R. Ransom
75050 06-01-05

Roll 3 of 6